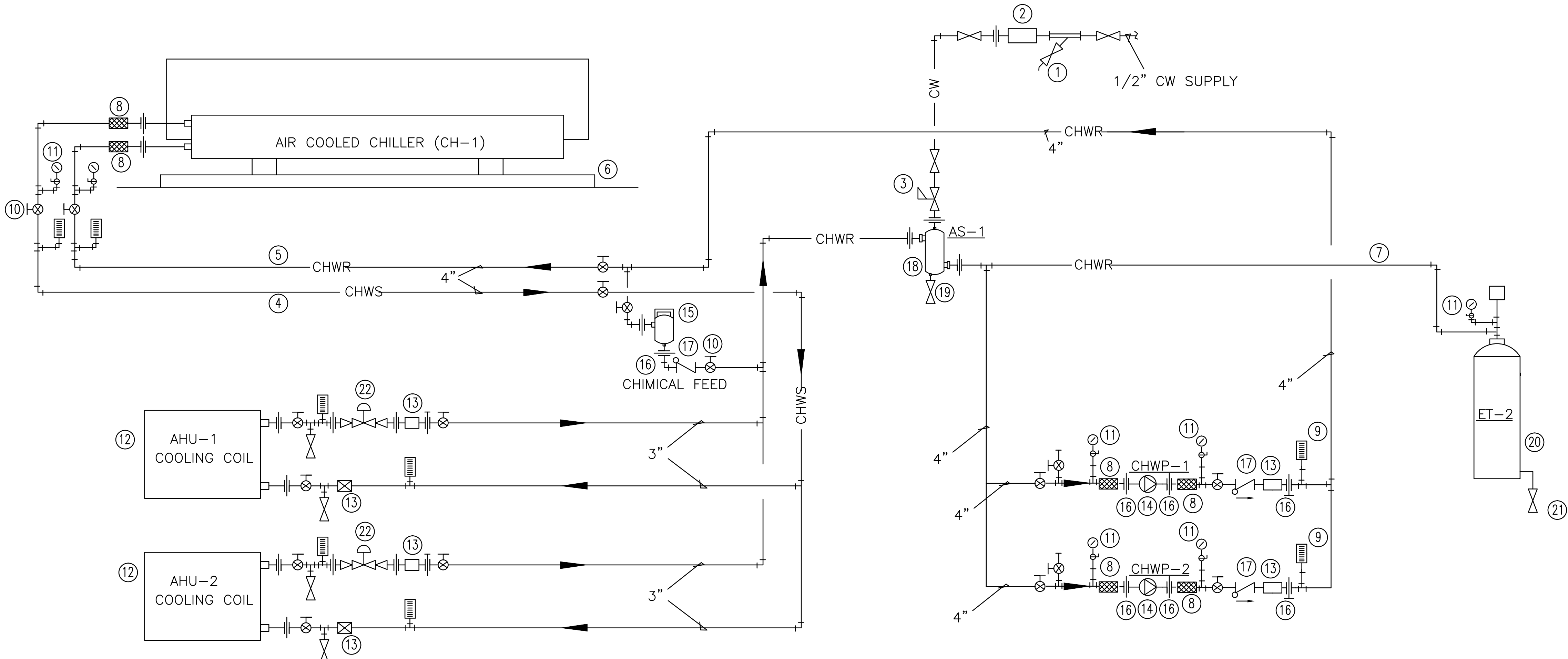


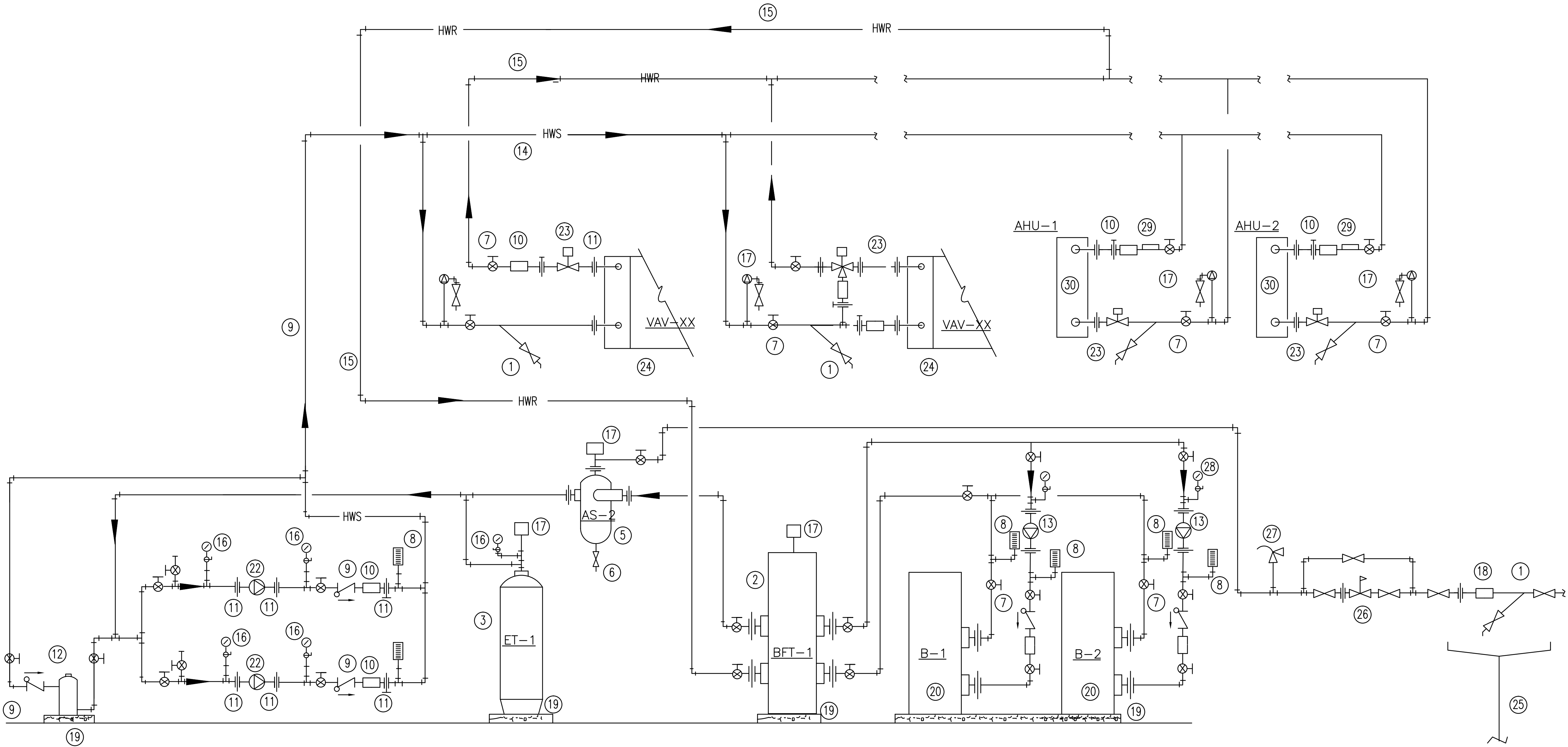
three inches = one foot  
one and one half inches = one foot  
one inch = one foot  
three quarters inch = one foot  
one half inch = one foot  
three eighths inch = one foot  
one quarter inch = one foot  
one eighth inch = one foot



CHILLED WATER PIPING SCHEMATIC DIAGRAM  
NO SCALE

KEY NOTES FOR CHILLED WATER PIPING

- ① STRAINER WITH BLOW DOWN VALVE (TYPICAL).
- ② REDUCED PRESSURE BACKFLOW PREVENTER WITH 3/4" DRAIN LINE TO FLOOR DRAIN.
- ③ PRV SELF FILL VALVE SET AT 12 PSIG.
- ④ CHILLED WATER SUPPLY PIPING.
- ⑤ CHILLED WATER RETURN PIPING.
- ⑥ 4" HIGH CONCRETE BASE (TYPICAL).
- ⑦ EXPANSION WATER PIPING.
- ⑧ FLEXIBLE PIPE CONNECTOR (TYPICAL).
- ⑨ STEM THERMOMETER 9" SCALE 0-100° F. (TERICE INDUSTRIAL TYPE).
- ⑩ BALL VALVE (TYPICAL).
- ⑪ PRESSURE GAUGE WITH GAUGE COCK 4" 0-100 PSIG (MARSH TYPE).
- ⑫ CHILLED WATER COIL.
- ⑬ FLOW METER WITH BALANCE COCK.
- ⑭ INLINE PUMP
- ⑮ WATER TREATMENT TANK WITH HANDHOLE IN TOP FOR CHEMICALS.
- ⑯ UNION (TYPICAL).
- ⑰ SPRING LOADED CHECK VALVE (TYPICAL).
- ⑱ AIR SEPARATOR (FULL LINE SIZE).
- ⑲ 3/4" GATE VALVE, TYPICAL PROVIDE THREADED HOSE CONNECTION WHEN USED AS A DRAIN VALVE.
- ⑳ EXPANSION TANK WITH AIR VENT TANK FITTING SET 45 LBS.
- ㉑ TYPICAL DRAIN. ALL DRAIN TO BE 3/4" UNLESS OTHERWISE NOTED. EXTEND TO NEAREST FLOOR DRAIN.
- ㉒ TWO-WAY ATC CONTROL VALVE (TYPICAL).



HOT WATER PIPING SCHEMATIC DIAGRAM  
NO SCALE

KEY NOTES FOR HOT WATER PIPING

- ① STRAINER WITH BLOW DOWN VALVE, (TYPICAL).
- ② BUFFER TANK, USED AS A COMMON PIPE.
- ③ EXPANSION TANK DIAPHRAM TYPE VERTICAL FLOOR MOUNTED.
- ④ TYPICAL DRAIN. ALL DRAINS TO BE 3" UNLESS NOTED OTHERWISE. EXTEND TO NEAREST FLOOR DRAIN.
- ⑤ AIR SEPARATOR, FULL LINE SIZE.
- ⑥ 1" GATE VALVE. PROVIDE THREADED HOSE CONNECTION WHEN USED AS A DRAIN VALVE, (TYPICAL).
- ⑦ BALL VALVE, (TYPICAL).
- ⑧ STEM THERMOMETER 9" SCALE, 30°-240° F, (TYPICAL).
- ⑨ SPRING LOADED CHECK VALVE, (TYPICAL).
- ⑩ FLOW METER WITH BALANCE COCK, CIRCUIT SETTER, (TYPICAL).
- ⑪ UNION OF FLANGE, (TYPICAL).
- ⑫ WATER TREATMENT TANK WITH CHEMICALS.
- ⑬ BOILER PRIMARY PUMP, FURNISHED BY THE BOILER MANUFACTURER.
- ⑭ HOT WATER SUPPLY PIPING, (TYPICAL).
- ⑮ HOT WATER RETURN PIPING, (TYPICAL).
- ⑯ PRESSURE GAUGE WITH GAUGE COCK 0-100 PSIG, (TYPICAL).
- ⑰ AIR VENT, (TYPICAL). INSTALL AT ALL RISES, DROPS, AND HIGH POINTS OF SYSTEM.
- ⑱ REDUCED PRESSURE BACKFLOW PREVENTER.
- ⑲ 3" HIGH CONCRETE BASE.
- ⑳ HIGH EFFICIENCY CONDENSING BOILER.
- ㉑ FLEXIBLE PIPE CONNECTOR, (TYPICAL).
- ㉒ INLINE PUMP
- ㉓ TWO-WAY OR THREE-WAY ATC CONTROL VALVE SUPPLIED BY CONTROL CONTRACTOR. INSTALLED BY MECHANICAL CONTRACTOR (TYPICAL). INSTALL 3-WAY VALVE AT END OF LOOP UNITS AND WHERE SHOWN.
- ㉔ TYPICAL VAV BOX WITH HOT WATER REHEAT COIL.
- ㉕ PROVIDE DRIP PAN BELOW PRESSURE BACKFLOW PREVENTER. CONTINUE 3" DRAIN LINE TO FLOOR DRAIN.
- ㉖ PRV, SELF FILL VALVE, SET AT 12 PSIG.
- ㉗ PRESSURE RELIEF VALVE.
- ㉘ 1/2" COLD WATER MAKE-UP LINE.
- STRAP ON AQUASTAT BY TEMP. CONTROL CONTRACTOR.
- ⑳ AHU COIL

FINAL SUBMISSION / FULLY SPRINKLERED

<b>CONSULTANTS:</b> CIVIL: KENNETH HORNE & ASSOCIATES 7201 NORTH 9TH AVENUE, STE. 6 PENSACOLA, FLORIDA 32504 PH: (850) 471-9005 FX: (850) 471-0093 LANDSCAPE ARCHITECT: CSA GROUP, INC. 6300 PICCADILLY SQUARE DRIVE MOBILE, ALABAMA 36609 PH: (251) 344-4023 FX: (251) 344-4052 COMM/DS: SCHMIDT CONSULTING GROUP, INC. 40 S. PALAFOX PLACE, STE. 300 PENSACOLA, FLORIDA 32502 PH: (850) 438-0050 FX: (850) 432-8631 SURVEYORS: KCI TECHNOLOGIES, INC. 10401 HIGHLAND MANOR DRIVE, SUITE 120 TAMPA, FLORIDA 33610 PH: (813) 740-2300				<b>ARCHITECT/ENGINEERS:</b>  BES DESIGN/BUILD, LLC 766 Middle St, Fairhope, AL 36532 Phone: 251.990.5778 Fax: 251.990.3716		<b>Drawing Title</b> HVAC RISER DIAGRAM AND DETAILS <b>Approved Project Director</b>		<b>Project Title</b> CONSTRUCT VA OUTPATIENT CLINIC, PANAMA CITY <b>Location</b> PANAMA CITY, FLORIDA <b>Date</b> APRIL 2013		<b>Project Number</b> 520-326 <b>Building Number</b> - <b>Drawing Number</b> MH006 Dwg 7 of 11		<b>Office of Construction and Facilities Management</b> 	
--	--	--	--	--	--	---	--	--	--	--	--	---	--