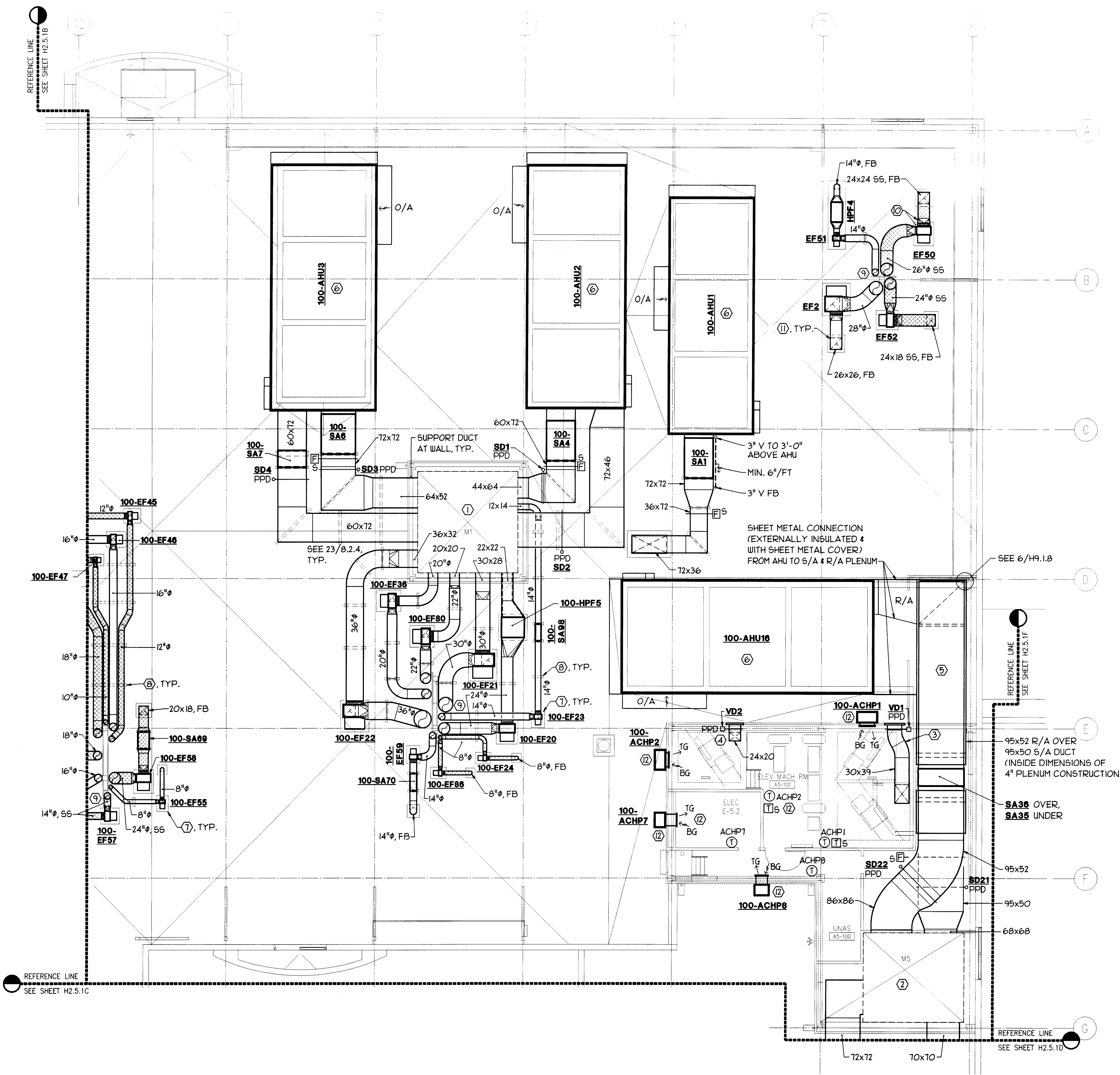
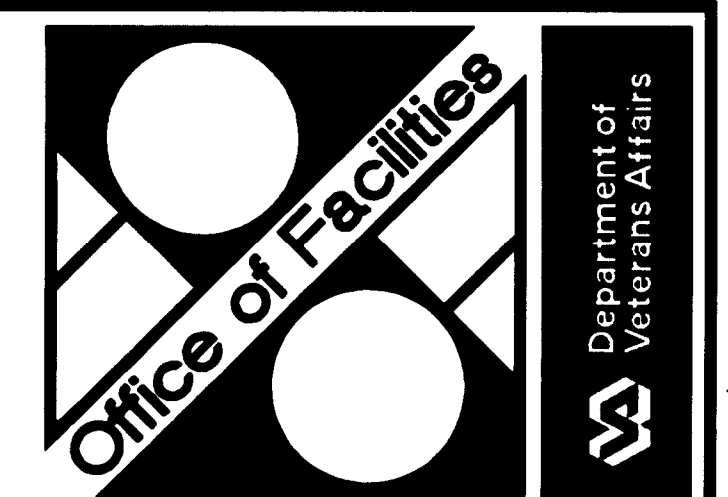


three inches = one foot  
one and one-half inches = one foot  
one inch = one foot  
three-quarters inch = one foot  
one-half inch = one foot  
three-eighths inch = one foot  
one-quarter inch = one foot  
one-eighth inch = one foot



- GENERAL NOTE:**
- SEE DETAIL 1/8.2.6 FOR HOUSEKEEPING PAD UNDER MECHANICAL EQUIPMENT.
- SHEET NOTES:**
- FOR DUCT CONTINUATION IN SHAFT M1 SEE 6/H3.3.1.
  - FOR DUCT CONTINUATION IN SHAFT M5 SEE 5/H3.3.5.
  - CONNECT DUCT TO HOISTWAY VENT OPENING (2'-6"x3'-3"), RUN & CONNECT TO LOUVER L4.
  - CONNECT DUCT TO HOISTWAY VENT OPENING (2'-0"x1'-8"), RUN & CONNECT TO LOUVER L3.
  - FOR SECTIONS OF PLENUM SEE SHEET H2.5.1C, FOR DETAILS SEE SHEET H9.1.8.
  - FOR AHU SUPPORT CURB DETAIL SEE 12/8.2.5 & 1/55.1.0.
  - FOR PIPE SUPPORT CURB DETAIL, SEE 25/8.2.5 (EQUIPMENT SUPPORT DETAIL SIMILAR).
  - FOR DUCT SUPPORT CURB DETAIL SEE 20/8.2.5.
  - PROVIDE FULL SIZE DUCT (OR EQUAL ROUND DUCT) FROM FAN DISCHARGE TO WITHIN 4'-0" OF THE DUCT DISCHARGE (AT 15'-0" ABOVE ROOF), THEN REDUCE DUCT SIZE TO ABOUT 3000 FPM OUTLET VELOCITY TO DISCHARGE, SEE 9/H9.1.8. PROVIDE DUCT SUPPORT, SEE 8/56.3.15.
  - SUPPORT DUCT AT FAN INLET & OUTLET FROM EF SUPPORT CURB, TYP.
  - FOR DUCT PENETRATION OF ROOF SEE 12/8.2.5.
  - TG, BG, GRILLE CONNECTIONS TO UNIT & THERMOSTAT FURNISHED WITH ACHP. SENSOR T5-1, SEE CONTROL DRAWINGS.

\*FOR BASIC FIRE PROTECTION DIAGRAMS, SEE FIRE PROTECTION PLANS, FP PREFIX DRAWINGS. FOR SPECIFIC PARTITION TYPES SEE ARCHITECTURAL DIMENSION PLANS.\*



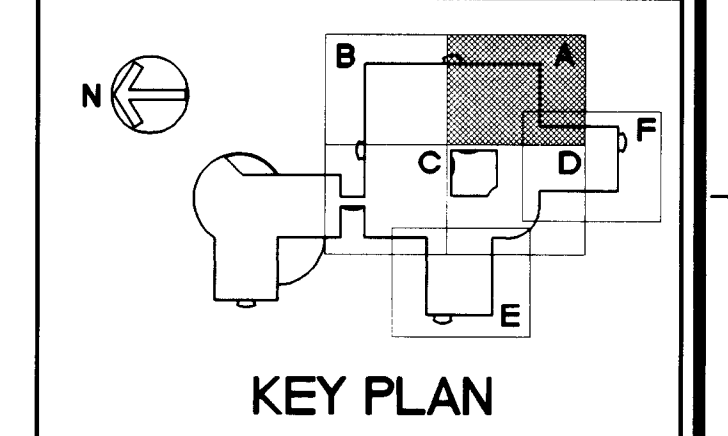
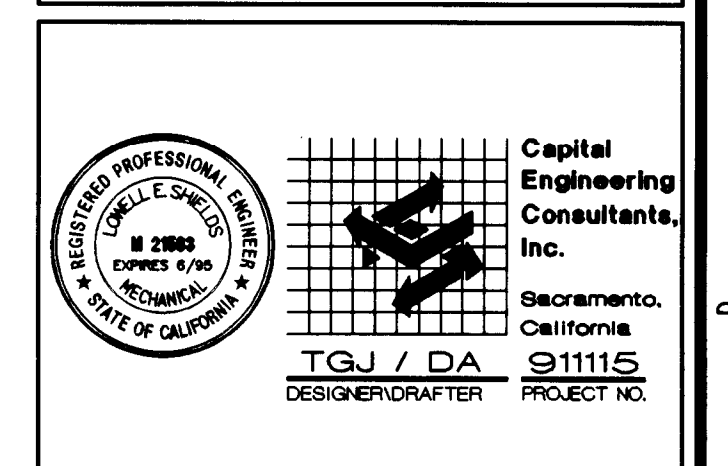
*Yvonne C. Aglin*  
Western Team Director

Approved Project Director

**ARCHITECT**  
**The Ratcliff Architects**  
5556 Doyle Street  
Emeryville, CA 94608  
P.O. Box 1022  
Berkeley, CA 94701  
(510) 552-1972

**ASSOCIATE ARCHITECT**  
**Stone, Marracini and Patterson**  
One Market Plaza  
Spear Street Tower, Suite 400  
San Francisco, CA 94105  
(415) 227-0100

**CONSULTANTS**  
**Structural Engineers**  
H.J. Degenkolb Associates  
**Mechanical Engineers**  
Capital Engineering Consultants, Inc.  
**Electrical Engineers**  
The Engineering Enterprise  
**Cost Estimator**  
Adamson Associates  
**Landscape Design/**  
**Land Planning**  
Omni Lang Associates, Inc.  
**Civil Engineer**  
Sandia and Associates, Inc.  
**Elevator Consultant**  
Sykes and Hennessy  
**Fire Protection**  
Rolf Jensen and Associates  
**Food Service Consultant**  
Cini-Little International, Inc.



RECORD DRAWINGS		8-14-98