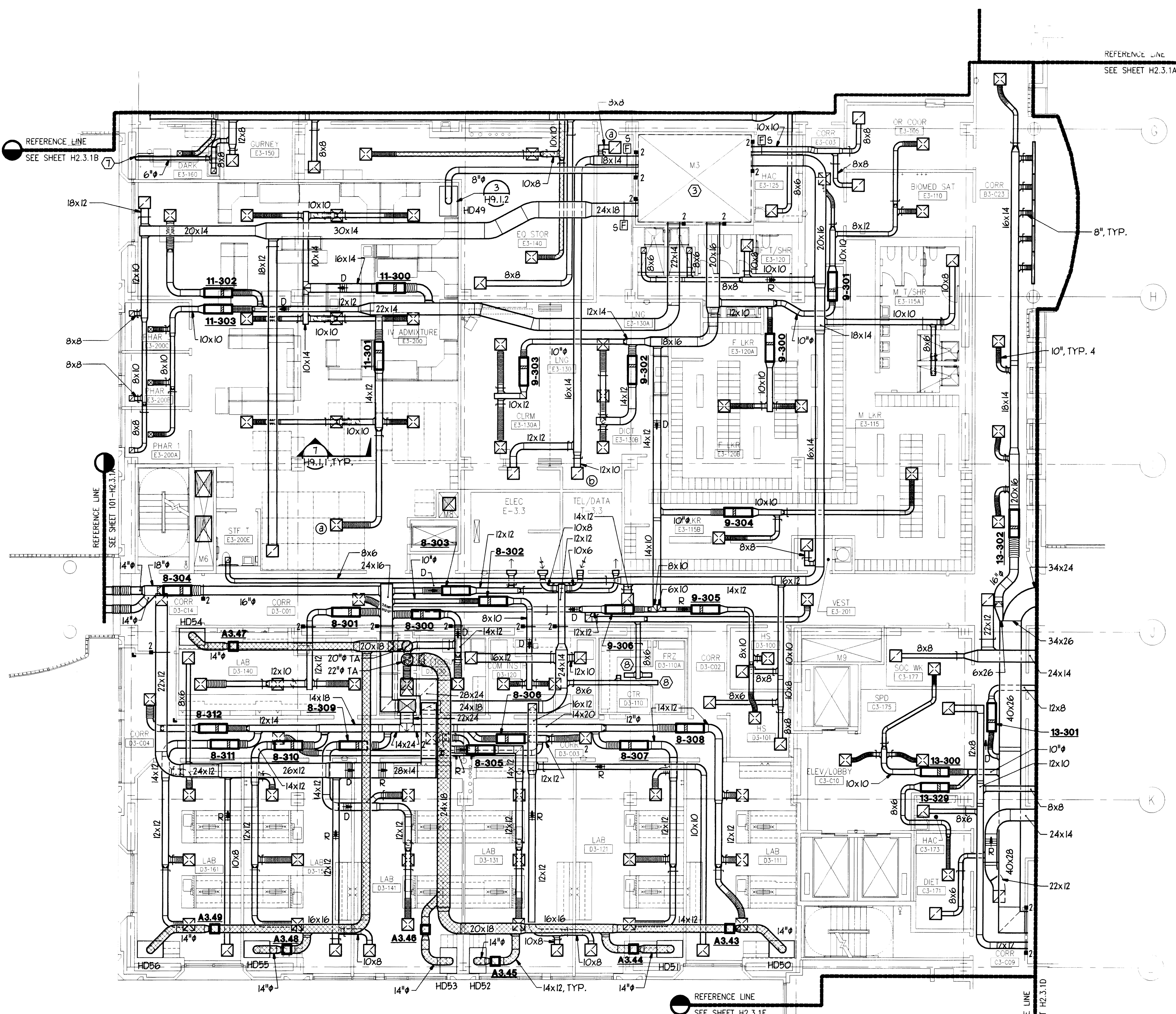


three inches = one foot
one and one-half inches = one foot
one inch = one foot
three-quarters inch = one foot
one-half inch = one foot
three-eighths inch = one foot
one-quarter inch = one foot
one-eighth inch = one foot



- SHEET NOTES:**
- 1 SEE SHEET H2.3.2C FOR THERMOSTAT LOCATIONS.
 - 2 AIR TERMINAL UNITS SHOWN ON THIS SHEET ARE A-3XX, WHERE '3XX' IS NUMBER OF UNIT, 'A' IS NUMBER OF AHU SUPPLYING UNIT.
 - 3 FOR DUCT CONTINUATION IN SHAFT M3 SEE 4/H3.3.3.
 - 4 FOR DUCT CONNECTION SIZE TO S/A DIFFUSERS & REGISTERS REFER TO TABLE ON SHEET H0.1.3 U.O.N.
 - 5 DUCT CONNECTION TO ATU SHALL BE SIZED PER SCHEDULE ON SHEETS H0.3.1 - H0.3.8 U.O.N.
 - 6 AIR FLOW CONTROL VALVES (AFCV) ARE SHOWN AS AYZ, WHERE 'Y' IS THE FLOOR NUMBER, AND 'Z' IS THE CONSECUTIVE NUMBER FOR EACH AFCV.
 - 7 4" DUCT DN & CONNECT TO XP034, SEE 5/H9.1.2.
 - 8 8x6 (2) 15f S/A, (2) 15f R/A, CONNECT TO REF/FRZ EQUIPMENT DUCT WORK.

AIR DISTRIBUTION TABLE													
ROOM NUMBER	ROOM NAME	ATU NO.	CFM (EACH)				SIZE & TYPE			QUANTITY			REMARKS
			S/A	R/A	E/A	M/A	S/A	R/A	E/A	S/A	R/A	E/A	
B3-C23	CORR	13-302	200	2160	0	-200	LSD1	PR1	-	5	1	0	C3-C09
B3-C23	CORR	13-302	340	-	-	-	12x12 PDI	-	-	4	-	-	
C3-171	DIET	13-329	90	90	0	0	6x6 PDI	PR1	-	1	1	0	
C3-173	HAC	-	0	0	100	+100	-	-	PE2	0	0	1	B3-C23
C3-175	SPD	-	0	0	320	+320	-	-	PE1	0	0	1	C3-C10
C3-177	SOC WK	13-300	130	130	0	0	6x6 PDI	PR1	-	1	1	0	
C3-C09	CORR	-	0	2150	0	+2150	-	PR1	-	0	1	0	⑩
C3-C10	ELEV/LOBBY	13-300	160	0	0	-320	8x8 PDI	-	-	2	0	0	C3-175
D3-100	H5	9-305	150	0	150	0	6x6 PDI	-	PE1	1	0	1	
D3-101	H5	9-305	150	0	150	0	6x6 PDI	-	PE1	1	0	1	
D3-110	CTR	-	0	0	0	0	-	-	-	0	0	0	
D3-110A	FRZ	-	0	0	0	0	-	-	-	0	0	0	
D3-111	LAB	8-308	360	0	355	+150	10"φ CD1	-	PE1	3	0	1	⑩
D3-120	COM INSTR	8-302	180	0	410	+50	8"φ CD1	-	PE1	2	0	1	⑩
D3-121	LAB	8-301	350	0	320	+145	8"φ CD1	-	PE1	3	0	1	⑩
D3-130	LAB (TISSUE)	8-300	480	0	1100	+140	10"φ CD1	-	PE1	2	0	1	⑩
D3-131	LAB	8-305	360	0	355	+150	10"φ CD1	-	PE1	3	0	1	⑩
D3-140	LAB	8-301	270	0	65	+130	8"φ CD1	-	PE1	3	0	1	⑩
D3-141	LAB	8-309	360	0	355	+150	10"φ CD1	-	PE1	3	0	1	⑩
D3-151	LAB	8-310	350	0	320	+145	8"φ CD1	-	PE1	3	0	1	⑩
D3-161	LAB	8-311	330	0	265	+150	8"φ CD1	-	PE1	3	0	1	⑩
D3-C01	CORR	9-306	340	0	530	-150	12x12 PDI	-	PE1	2	0	1	⑩
D3-C02	CORR	-	0	0	100	+100	-	-	PE1	0	0	1	⑩
D3-C03	CORR	8-306	300	0	0	-900	12x12 PDI	-	-	3	0	0	⑩
D3-C04	CORR	8-312	310	0	0	-310	12x12 PDI	-	-	1	0	0	⑩
D3-C14	CORR	8-304	0	0	1880	+1880	-	-	PE1	0	0	1	⑩
E-3.3	ELEC	8-303	510	0	510	0	16x12 T9R	-	16x10 TER	1	0	1	
E3-105	OR COOR	9-301	200	200	0	0	8x8 PDI	PR1	-	1	1	0	
E3-110	BIOMED SAT	9-301	160	180	0	+20	8x8 PDI	PR1	-	1	1	0	E3-C03
E3-115	M LKR	9-904	250	0	0	-250	10x10 PD2	-	-	1	0	0	E3-115A
E3-115A	M T/SHR	-	0	0	260	+460	-	-	PE2	0	0	1	⑩
E3-115A	M T/SHR	-	-	-	100	-	-	-	PE9	-	-	2	-
E3-115B	M LKR	9-904	170	0	0	-170	8x8 PD2	-	-	1	0	0	E3-115A
E3-120	F T/SHR	-	0	0	260	+460	-	-	PE2	0	0	1	⑩
E3-120	F T/SHR	-	-	-	100	-	-	-	PE9	-	-	2	-
E3-120A	F LKR	9-300	210	0	0	-420	8x8 PD2	-	-	2	0	0	E3-120
E3-120B	F LKR	-	-	-	-	-	-	-	-	-	-	-	-
E3-125	HAC	-	0	0	150	+150	-	-	PE2	0	0	1	E3-C04
E3-130	LNG	9-302	310	③300	0	0	12x12 PDI	PR1	-	3	1	0	
E3-130	LNG	-	-	⑤630	-	-	-	PR1	-	-	-	-	-
E3-130A	CLRM	9-303	290	580	0	0	12x12 PDI	PR1	-	2	1	0	
E3-140	EQ STOR	1-322	160	0	240	0	8"φ D1	-	PE1	3	0	2	
E3-150	GURNEY	-	0	0	150	+150	-	-	PE1	0	0	1	⑩
E3-160	DARK	1-325	270	0	235	+40	6"φ D3	-	PE1	1	0	1	⑩
E3-200	IV ADMIXTURE	11-300	240	1400	0	-200	8"φ CD1	PR1	-	6	2	0	⑩
E3-200	IV ADMIXTURE	11-301	240	-	-	-	8"φ CD1	-	-	3	-	-	-
E3-200	IV ADMIXTURE	11-301	③340	-	-	-	8"φ CD1	-	-	1	-	-	-
E3-200	IV ADMIXTURE	11-302	160	-	-	-	14"φ CD1	-	-	1	-	-	-
E3-200A	PHAR 1	11-303	150	150	0	0	6"φ D3	PR4	-	1	1	0	
E3-200B	PHAR 2	11-303	150	150	0	0	6"φ D3	PR4	-	1	1	0	
E3-200C	PHAR 3	11-303	150	150	0	0	6"φ D3	PR4	-	1	1	0	
E3-200E	STF T	-	0	0	100	+100	-	-	PE6	0	0	1	E3-200
E3-201	VEST	-	0	0	150	+150	-	-	PE2	0	0	1	⑩
E3-C03	CORR	9-301	100	0	0	-100	6x6 PDI	-	-	1	0	0	⑩
ST-5	STAIR	-	0	0	0	0	-	-	-	0	0	0	
T-3.3	TEL/DATA	8-303	210	0	210	0	12x6 T9R	-	10x6 TER	1	0	1	

- REMARKS**
- 1 ROOM NUMBER(S) PROVIDING (-) / RECEIVING (+) MAKE-UP AIR (M/A).
 - 2 SYMBOL 6 ON PLAN & TABLE INDICATES WHICH DIFFUSER(S)/REGISTER(S) AT CFM NOTED.
 - 3 D3-C02, E3-200, E3-201
 - 4 HD49, 260 CFM E/A, SEE DETAIL 3/H9.1.2, B3-C30, E3-200E
 - 5 E3-120A, E3-C03
 - 6 E3-115, E3-115B, E3-C03
 - 7 E3-110, E3-115, E3-120
 - 8 HD50, 875 CFM E/A; D3-C01, D3-C04
 - 9 D3-111, D3-120, D3-121, D3-130, D3-131, D3-140, D3-141, D3-151, D3-161
 - 10 D3-C01, D3-C04
 - 11 FOR SUPPLY AIR DISTRIBUTION SEE BUILDING 101, ROOM B3-C40, SHEET 101-H2.3.1A.
 - 12 B3-C23, B3-C24, C3-C01, C3-C08
 - 13 NOT USED
 - 14 XP034, 75 CFM E/A, E3-140, E3-303, E3-305, E3-315, E3-319, E3-325, E3-329, E3-344, E3-346, E3-350, E3-C08, F3-170
 - 15 HD51, 875 CFM E/A; D3-C01, D3-C04
 - 16 HD52, 875 CFM E/A; D3-C01, D3-C04
 - 17 HD53, 875 CFM E/A; D3-C01, D3-C04
 - 18 HD54, 875 CFM E/A; D3-C01, D3-C04
 - 19 HD55, 875 CFM E/A; D3-C01, D3-C04
 - 20 HD56, 875 CFM E/A; D3-C01, D3-C04
 - 21 B3-C30, E3-200

Office of Facilities
Department of Veterans Affairs

Approved Project Director
Western Team Director

ARCHITECT
The Ratcliff Architects
5856 Doyle Street
Emeryville, CA 94608
P.O. Box 1022
Berkeley, CA 94701
(510) 652-1972

ASSOCIATE ARCHITECT
Stone, Marracini and Patterson
One Market Plaza
Spear Street Tower, Suite 400
San Francisco, CA 94105
(415) 227-0100

CONSULTANTS
Structural Engineers
H.J. Degenkolb Associates
Mechanical Engineers
Capital Engineering Consultants, Inc.
Electrical Engineers
The Engineering Enterprise
Cost Estimator
Adamson Associates
Landscape Design/
Land Planning
Omni Lang Associates, Inc.
Civil Engineer
Sandis and Associates, Inc.
Elevator Consultant
Sykes and Hennessy
Fire Protection
Rolf Jensen and Associates
Food Service Consultant
Cini-Little International, Inc.

Capital Engineering Consultants, Inc.
Sacramento, California
TJG / DA
DESIGNER/DRAWER
PROJECT NO. 211115

RECORD DRAWINGS
6-14-98

AMENDMENT 3
6-28-94

Location
VA Medical Center
Palo Alto, CA

Project Title
REPLACE CLINICAL/
BED TOWER FOR
SEISMIC CORRECTIONS

FULLY SPRINKLERED

TRA Project No.
93007
Checked
TGJ
Drawn
DA

Drawing Title
THIRD FLOOR
PLAN, AREA C -
DUCTWORK

Scale 1/8" = 1'-0"

VA Project No.
640-042G
Building Number
100
Date
2 MAY 1998
Drawing No.
H2.3.1C
Dwg of