

SHEET NOTES:

- SEE SHEET H2.4.2A FOR THERMOSTAT LOCATIONS.
- AIR TERMINAL UNITS SHOWN ON THIS SHEET ARE A-4XX, WHERE '4XX' IS NUMBER OF UNIT. 'A' IS NUMBER OF AHU SUPPLYING UNIT.
- FOR DUCTS IN SHAFT M1 SEE 5/H3.3.1.
- FOR DUCT CONNECTION SIZE TO S/A DIFFUSERS & REGISTERS REFER TO TABLE ON SHEET HO.1.3 U.O.N.
- DUCT CONNECTION TO ATU SHALL BE SIZED PER SCHEDULE ON SHEETS HO.3.1 - HO.3.8 U.O.N.
- AIR FLOW CONTROL VALVES (AFCV) ARE SHOWN AS A.Y.Z, WHERE 'Y' IS THE FLOOR NUMBER, AND 'Z' IS THE CONSECUTIVE NUMBER FOR EACH AFCV.
- 4" DUCT DOWN AND CONNECT TO HD14.

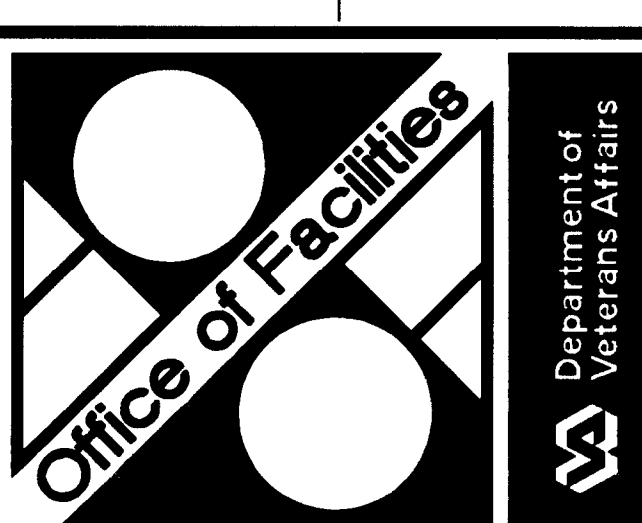
- 4" DUCT DOWN AND CONNECT TO XPO3T. PROVIDE 2" AIR GAP AT CONNECTION TO EXHAUST DUCT SIMILAR TO 5/H9.1.2.
- 4" DUCT DOWN AND CONNECT TO LB107. PROVIDE 2" AIR GAP AT CONNECTION TO EXHAUST DUCT SIMILAR TO 5/H9.1.2.
- DUCT DOWN ON FACE OF WALL.
- 8x6 (2) 15f S/A, (2) 15f R/A, CONNECT TO REF/CTR EQUIPMENT DUCT WORK.
- 6" 15f S/A, 15f R/A, CONNECT TO REF EQUIPMENT DUCT WORK.
- SA2 IN E/A RISE TO AHU1 SEE 1/H4.1.1.
- 5" DOWN, CONNECT TO HD69.

AIR DISTRIBUTION TABLE

ROOM NUMBER	ROOM NAME	ATU NO.	CFM (EACH)				SIZE & TYPE			QUANTITY		REMARKS
			S/A	R/A	E/A	M/A	S/A	R/A	E/A	S/AR/AE/A	Q	
A4-171	BMS STOR	16-401	70	0	80	+10	8" DI	-	PE1	1	0	B4-C22
A4-175	SPD	-	0	0	320	+320	-	-	PE1	0	0	A4-C10
A4-C09	CORR	-	0	1180	0	+1180	-	PR1	-	0	1	B4-C22
A4-C10	ELEV LOBBY	16-401	160	0	0	-320	8x8 PD1	-	-	0	0	A4-175
B4-C22	CORR	16-402	220	0	0	-2660	15D1	-	-	5	0	0
B4-C22	CORR	16-402	390	0	0	-	12x12 PD1	-	-	4	0	-
E-4.1	ELEC	1-423	640	0	640	0	18x12 T5R	-	16x12 TER	1	0	1
E4-C17	CORR	4-400	260	0	480	-300	10x10 PD1	-	PE1	2	0	1
E4-C17	CORR	4-403	260	0	0	-	10x10 PD1	-	-	1	0	-
F4-100	FLAM/TOXIC	4-400	120	0	70	+20	8x6 HSG	-	8x6 HEG2	1	0	1
F4-101	STF T	-	0	0	100	+100	-	-	PE6	0	0	1
F4-102	STF T	-	0	0	100	+100	-	-	PE6	0	0	1
F4-110	HEMA	1-430	300	0	650	-60	12x12 PD1	-	PE1	4	0	1
F4-110	HEMA	1-431	3250	0	0	-	10x10 PD1	-	-	2	0	-
F4-110	HEMA	1-431	3380	0	0	-	12x12 PD1	-	-	2	0	-
F4-120	BULK STOR	1-431	70	0	70	0	8" DI	-	PE1	1	0	1
F4-120A	REFR	-	0	0	0	0	-	-	-	0	0	-
F4-122	ADP CRT6	1-421	260	0	230	-30	10x10 PD1	-	PE8	1	0	1
F4-130	SPEC ACCS PROC	1-429	200	0	1160	+160	8x8 PD1	-	PE1	2	0	1
F4-130A	ADP CONTROL	1-428	190	0	110	-20	8x8 PD1	-	PE1	1	0	1
F4-130B	PRE-PROC	1-429	210	0	0	-420	8x8 PD1	-	-	2	0	0
F4-131	M PUB T	-	0	0	100	+100	-	-	PE6	0	0	1
F4-133	F PUB T	-	0	0	100	+100	-	-	PE6	0	0	1
F4-140	BB TRANS SERV	1-404	460	0	1590	+210	10" CD1	-	PE1	3	0	1
F4-150	BB PROD PREP	1-425	450	0	160	+135	10" CD1	-	PE1	2	0	1
F4-160	STAT LAB	1-426	210	0	0	-690	10x10 PD1	-	-	2	0	0
F4-160	STAT LAB	1-426	150	0	0	-	6x6 PD1	-	-	1	0	-
F4-164	CLIN CHEM	1-424	380	0	0	-1190	12x12 PD1	-	-	4	0	0
F4-164	CLIN CHEM	1-424	210	0	0	-	10x10 PD1	-	-	1	0	-
F4-168	URIN	1-424	420	0	2135	+1190	14" PD1	-	PE1	1	0	1
F4-170	CLIN CHEM	1-416	110	0	2115	-115	8x8 PD1	-	PE1	4	0	1
F4-170	CLIN CHEM	1-416	340	0	0	-	12x12 PD1	-	-	2	0	-
F4-170	CLIN CHEM	1-422	340	0	0	-	12x12 PD1	-	-	1	0	-
F4-170	CLIN CHEM	1-422	150	0	0	-	6x6 PD1	-	-	1	0	-
F4-170	CLIN CHEM	1-422	380	0	0	-	12x12 PD1	-	-	1	0	-
F4-170A	REFR	-	0	0	0	0	-	-	-	0	0	0
F4-173	CLIN CHEM	1-420	260	0	1805	+245	10x10 PD1	-	PE1	6	0	1
F4-175	SPEC CHEM	1-419	240	0	1100	+140	10x10 PD1	-	PE1	4	0	1
F4-177	RIA	1-421	405	0	815	+115	12x12 PD1	-	PE1	2	0	1
F4-180	SPEC CHEM	1-417	220	0	0	+235	8x8 PD1	-	-	6	0	0
F4-198	VEST	-	0	0	0	0	-	-	-	0	0	0
F4-199	VEST	-	0	0	100	+100	-	-	PE5	0	0	1
F4-200	LAB	1-402	210	0	100	+135	8x8 PD1	-	PE1	4	0	1
F4-208	DARK	1-409	220	0	250	+30	8" D3	-	PE1	1	0	1
F4-210	LAB	1-403	350	0	325	+150	12x12 PD1	-	PE1	3	0	1
F4-211	LAB	1-405	220	0	140	+135	8x8 PD1	-	PE1	4	0	1
F4-215	LAB	1-407	290	0	460	+175	12x12 PD1	-	PE1	4	0	1
F4-220	GEN STOR	1-406	370	0	370	0	10" DI	-	PE1	1	0	1
F4-221	LAB	1-408	270	0	370	+165	10x10 PD1	-	PE1	4	0	1
F4-222	DARK	1-409	140	0	110	+20	8" D3	-	PE1	1	0	1
F4-224	CTR	-	0	0	0	0	-	-	-	0	0	0
F4-225	LAB	1-410	290	0	460	+175	12x12 PD1	-	PE1	4	0	1
F4-230	LAB (TISSEUE)	1-411	640	0	1470	+190	14" CD1	-	PE1	2	0	1
F4-231	LAB	1-412	260	0	315	+150	10x10 PD1	-	PE1	4	0	1
F4-234	COM INSTR	1-401	190	0	440	+60	8x8 PD1	-	PE1	2	0	1
F4-235	LAB	1-413	350	0	325	+150	12x12 PD1	-	PE1	3	0	1
F4-241	LAB	1-415	380	0	440	+175	12x12 PD1	-	PE1	3	0	1
F4-C01	CORR	-	0	1180	0	+1180	-	PR1	-	0	1	B4-C22
F4-C02	CORR	1-406	340	0	0	-680	12x12 PD1	-	-	1	0	0
F4-C02	CORR	1-414	340	0	0	-	12x12 PD1	-	-	1	0	-
F4-C03	CORR	1-414	350	0	0	-350	12x12 PD1	-	-	1	0	0
F4-C04	CORR	1-406	340	0	0	-680	12x12 PD1	-	-	1	0	0
F4-C04	CORR	1-414	340	0	0	-	12x12 PD1	-	-	1	0	-
F4-C05	CORR	-	0	0	0	0	-	-	-	0	0	0
F4-C20	CORR	1-429	210	0	715	+115	8x8 PD1	-	PE1	2	0	1
F4-C20	CORR	1-431	240	0	0	-	10x10 PD1	-	-	1	0	-
F4-C21	CORR	1-418	310	0	0	-620	12x12 PD1	-	-	2	0	0
ST-2	STAIR	-	0	0	0	0	-	-	-	0	0	0
T-4.1	TEL	1-400	110	0	110	-	8x6 T5R	-	8x6 TER	1	0	1

REMARKS

- ROOM NUMBER(S) PROVIDING (-)/RECEIVING (+) MAKE-UP AIR (M/A).
- SYMBOL @ ON PLAN & TABLE INDICATES WHICH DIFFUSERS/REGISTER(S) AT CFM NOTED.
  - E4-370, E4-C17
  - HD14, 75 CFM E/A; F4-164
  - F4-130A, F4-130B, F4-140; @
  - HD15, 1125 CFM E/A; HD16, 625 CFM E/A; @
  - F4-140, F4-150, F4-C20
  - F4-110, F4-122, F4-160
  - F4-130; @
  - HD13, 875 CFM E/A; @
  - HD11, 1375 CFM E/A; E/A; HD69, 180 CFM E/A; F4-170, F4-C21
  - HD8, 875 CFM E/A; LB107, 50 CFM E/A; F4-C21
  - F4-173, F4-175, F4-177, F4-180
  - F4-200, F4-208, F4-210, F4-211, F4-215, F4-221, F4-222, F4-225, F4-230, F4-231, F4-234, F4-235, F4-241
  - F4-C02, F4-C03, F4-C04
  - HD9, 875 CFM E/A; @
  - HD10, 875 CFM E/A; @
  - HD6, 875 CFM E/A; @
  - HD5, 875 CFM E/A; @
  - HD4, 875 CFM E/A; @
  - HD3, 875 CFM E/A; @
  - XPO3T, 50 CFM E/A; @
  - HD2, 875 CFM E/A; @
  - HD1, 875 CFM E/A; @
  - HD7, 875 CFM E/A; @
  - E4-384, E4-388, F4-100, F4-101, F4-102
  - A4-171, A4-C09, F4-131, F4-133, F4-199, F4-C01

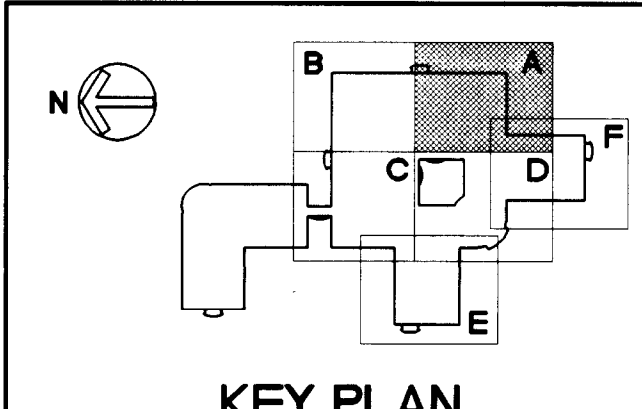
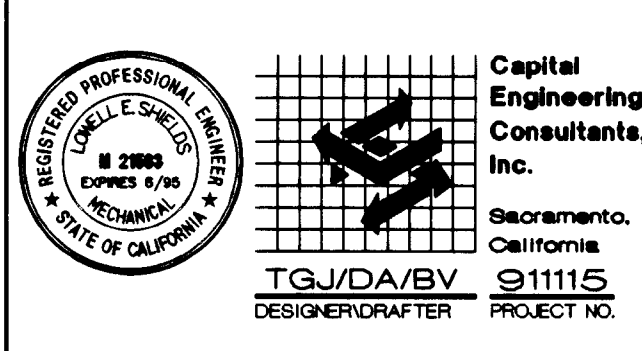


Approved Project Director  
Warren C. Aglin  
Western Team Director

ARCHITECT  
The Ratcliff Architects  
5856 Doyle Street  
Emeryville, CA 94608  
P.O. Box 1022  
Berkeley, CA 94701  
(510) 652-1972

ASSOCIATE ARCHITECT  
Stone, Marracini and Patterson  
One Market Plaza  
Spear Street Tower, Suite 400  
San Francisco, CA 94105  
(415) 227-0100

CONSULTANTS  
Structural Engineers  
H.J. Degenkolb Associates  
Mechanical Engineers  
Capital Engineering Consultants, Inc.  
Electrical Engineers  
The Engineering Enterprise  
Cost Estimator  
Adamson Associates  
Landscape Design/  
Land Planning  
Omni Lang Associates, Inc.  
Civil Engineer  
Sundis and Associates, Inc.  
Elevator Consultant  
Sykes and Hennessy  
Fire Protection  
Rolf Jensen and Associates  
Food Service Consultant  
Cini-Little International, Inc.



RECORD DRAWINGS 8-14-98

Revisions  
Location VA Medical Center  
Palo Alto, CA  
Project Title  
REPLACE CLINICAL/  
BED TOWER FOR  
SEISMIC CORRECTIONS  
FULLY SPRINKLERED  
TRA Project No. 93007  
Checked TGJ  
Drawn DA

Drawing Title  
FOURTH FLOOR  
PLAN, AREA A -  
DUCTWORK  
Scale 1/8" = 1'-0"  
VA Project No. 640-042G  
Building Number 100  
Date 2 MAY 1998  
DRAWING NO. H2.4.1A  
Dwg of

"FOR BASIC FIRE PROTECTION DIAGRAMS, SEE FIRE PROTECTION PLANS, FP PREFIX DRAWINGS; FOR SPECIFIC PARTITION TYPES SEE ARCHITECTURAL DIMENSION PLANS."