

Thomas C. Aglin
Western Team Director

Approved Project Director

ARCHITECT
The Ratcliff Architects
5556 Doyle Street
Emeryville, CA 94608

P.O. Box 1022
Berkeley, CA 94701
(510) 652-1972

ASSOCIATE ARCHITECT
Stone, Marracini and Patterson
One Market Plaza
Spear Street Tower, Suite 400
San Francisco, CA 94105
(415) 227-0100

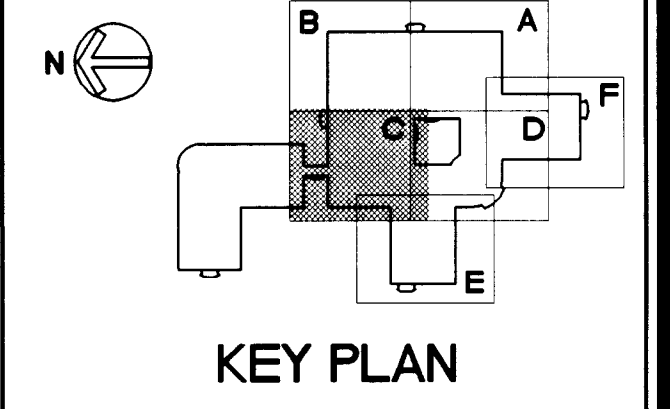
CONSULTANTS
Structural Engineers
H.J. Degenkolb Associates
Mechanical Engineers
Capital Engineering Consultants, Inc.
Electrical Engineers
The Engineering Enterprise

Cost Estimator
Adamson Associates
Landscape Design/
Land Planning
Omi Lang Associates, Inc.

Civil Engineer
Sandis and Associates, Inc.
Elevator Consultant
Syka and Hennessy

Fire Protection
Rolf Jensen and Associates
Food Service Consultant
Cini-little International, Inc.

Capital Engineering Consultants, Inc.
91115
Sacramento, California
TGJ/DA
DESIGNER/DRAWN



RECORD DRAWINGS 8-14-98

AMENDMENT 3 6-28-94
Revisions Date

Location VA Medical Center
Palo Alto, CA

Project Title
**REPLACE CLINICAL/
BED TOWER FOR
SEISMIC CORRECTIONS**

FULLY SPRINKLERED

TRA Project No. 93007 Checked TGJ Drawn DA

Drawing Title
**FOURTH FLOOR
PLAN, AREA C -
PIPING**

Scale 1/8" = 1'-0"

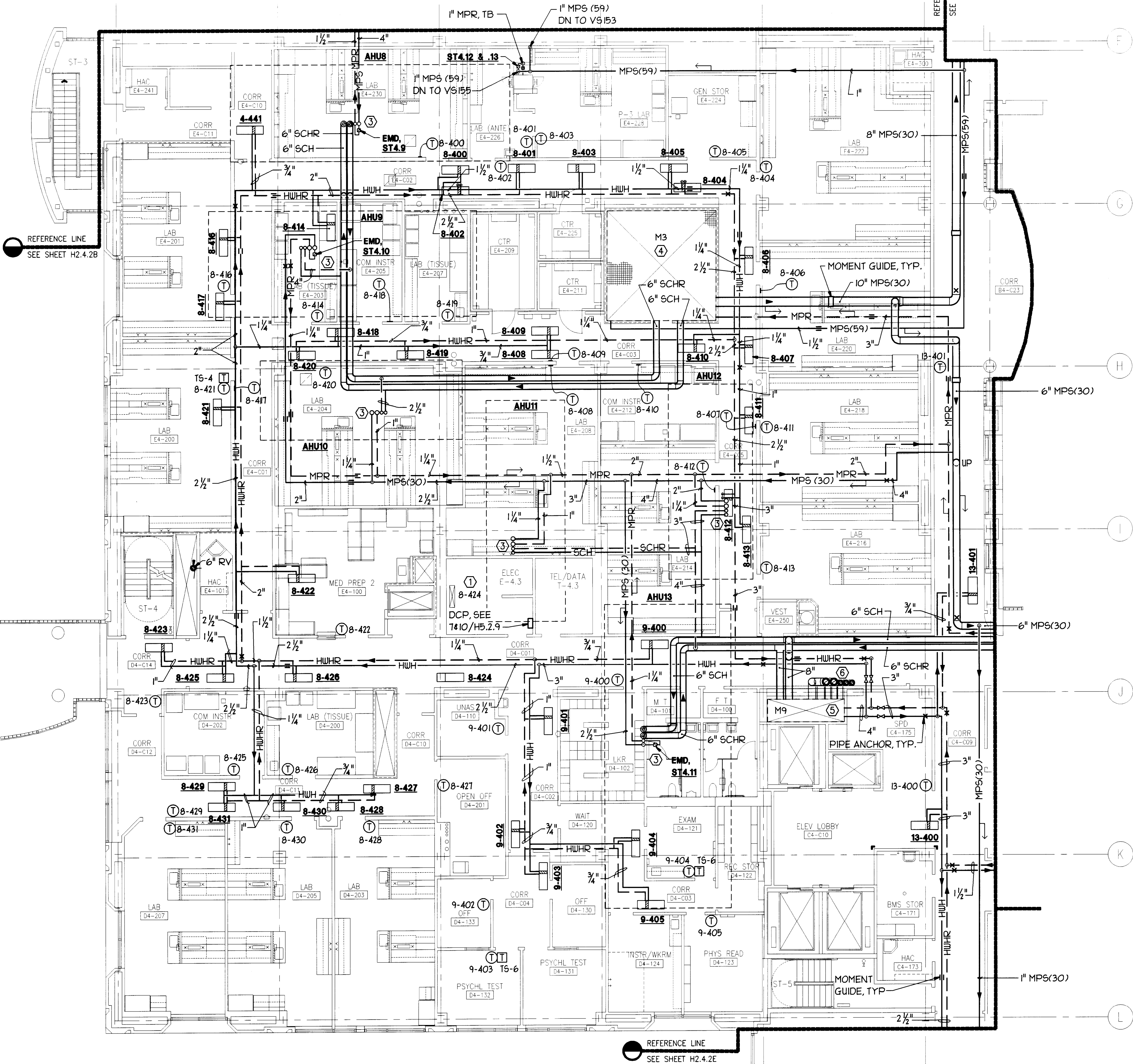
VA Project No. 640-042G Building Number 100

Date 2 MAY 1998 DRAWING NO. H2.4.2C

Dwg of

SHEET NOTE:

1. INSTALL A TEMPERATURE SENSOR (DDC) IN THE RETURN AIR DUCT, USE TO CONTROL THE ATU'S 4/OR REHEAT COILS.
2. FOR CHILLED WATER SYSTEM SCHEMATIC SEE H6.1.1. FOR HEATING WATER RISER DIAGRAM SEE HT.2.1. FOR STEAM & STEAM CONDENSATE RETURN RISER DIAGRAM SEE HT.4.1.
3. MPS (30), MPR, SCH, SCHR UP TO AHU ON ROOF.
4. SEE 5/H3.3.3 FOR SHAFT M3 PLAN.
5. SEE 11/H3.3.3 FOR SHAFT M9 PLAN.
6. (2) 10" & (3) 6" VENTS FROM SHAFT, OFFSET UP THRU ROOF.
7. [T] DESIGNATES SENSOR TS-6, REFER TO CONTROL DIAGRAM SHEET H5.2.3.
8. [T] DESIGNATES SENSOR TS-4, REFER TO CONTROL DIAGRAM SHEET H5.2.1.



"FOR BASIC FIRE PROTECTION DIAGRAMS, SEE FIRE PROTECTION PLANS, FP PREFIX DRAWINGS. FOR SPECIFIC PARTITION TYPES SEE ARCHITECTURAL DIMENSION PLANS."