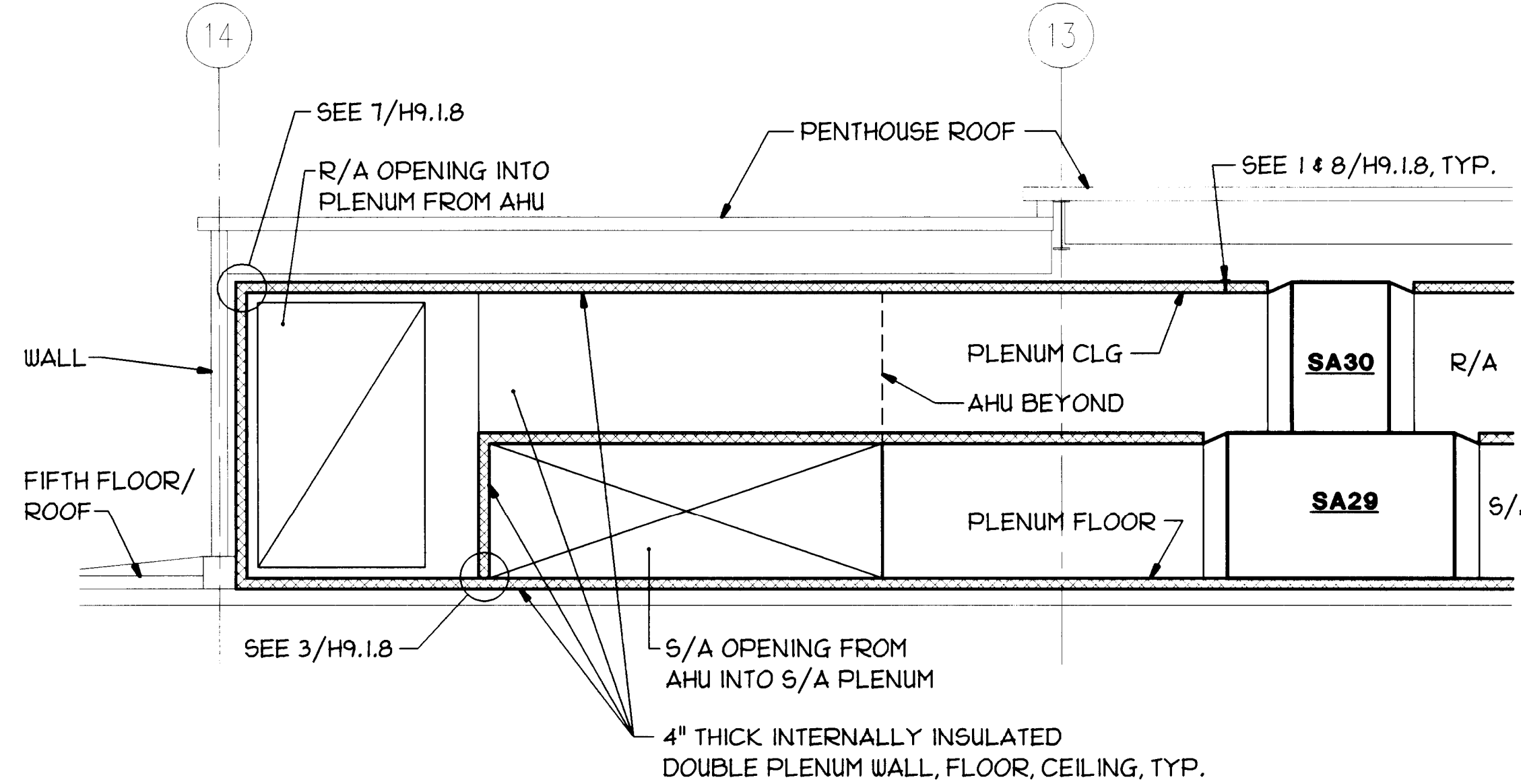


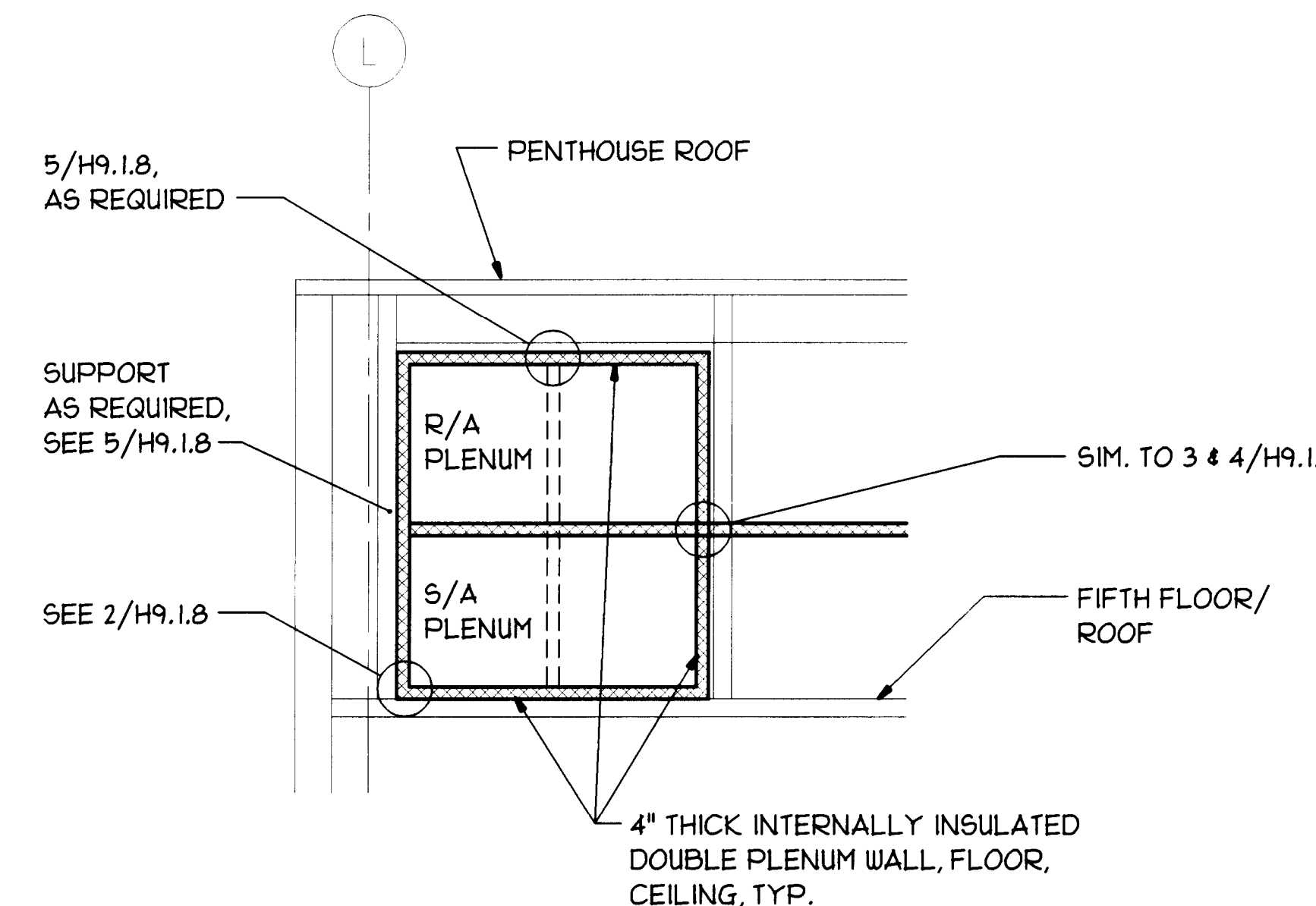
1 FIFTH FLO
H2.5.1C SCALE : 1/8" = 1'-0"

1. SEE DETAIL 1/8.2.6 FOR HOUSEKEEPING PAD UNDER MECHANICAL EQUIPMENT.

- ② FOR DUCT CONTINUATION IN SHAFT M3 SEE 6/H3.3.3.
- ② FOR DUCT CONTINUATION IN SHAFT M4 SEE 5/H3.3.4.
- ③ (2) 10" STEAM VENTS, (2) 6" RELIEF VENTS & (1) 6" FLASH TANK VENT, FB TO "1'-0" ABOVE FINISHED ROOF.
- ④ CONNECT DUCT TO HOISTWAY VENT OPENING (2'-0"x1'-8"), RUN & CONNECT TO LOUVER L4.
- ⑤ CONNECT DUCT TO HOISTWAY VENT OPENING (2'-0"x3'-3"), RUN & CONNECT TO LOUVER L3.
- ⑥ PROVIDE VENT DAMPER (OPEN TO 57 EQUIPMENT ROOM) IN DUCTED CONNECTION TO LOUVER L10.
- ⑦ FOR AHU SUPPORT CURB DETAIL SEE 12/8.2.5 & 7/55.7.0.
- ⑧ FOR PIPE SUPPORT CURB DETAIL, SEE 25/8.2.5 (EQUIPMENT SUPPORT DETAIL SIMILAR).
- ⑨ FOR DUCT SUPPORT CURB DETAIL SEE 20/8.2.5.
- ⑩ PROVIDE FULL SIZE DUCT (OR EQUAL ROUND DUCT) FROM FAN DISCHARGE TO WITHIN 4'-0" OF THE DUCT DISCHARGE (AT 15'-0" ABOVE ROOF), THEN REDUCE DUCT SIZE TO ABOUT 3000 FPM OUTLET VELOCITY TO DISCHARGE, SEE 9/H9.1.8. PROVIDE DUCT SUPPORT, SEE 8/56.3.15.
- ⑪ OUTSIDE AIR TEMPERATURE (TS -1) & HUMIDITY (H -1) SENSORS, SEE SHEET H5.3.1 FOR DCP DESIGNATIONS.
- ⑫ SUPPORT DUCT AT FAN INLET & OUTLET FROM EF SUPPORT CURB
- ⑬ FOR DUCT PENETRATION OF ROOF SEE 12/8.2.5.
- ⑭ TG, BG, GRILLE CONNECTIONS TO UNIT, THERMOSTAT FURNISHED WITH ACHP, SENSOR TS-1, SEE CONTROL DRAWINGS.



H2.5.1C **SCALE : 1/4" = 1'-0"**



H2.5.1C **SCALE : 1/4" = 1'-0"**

"FOR BASIC FIRE PROTECTION DIAGRAMS, SEE FIRE PROTECTION PLANS, FP PREFIX DRAWINGS. FOR SPECIFIC PARTITION TYPES SEE ARCHITECTURAL DIMENSION PLANS."

