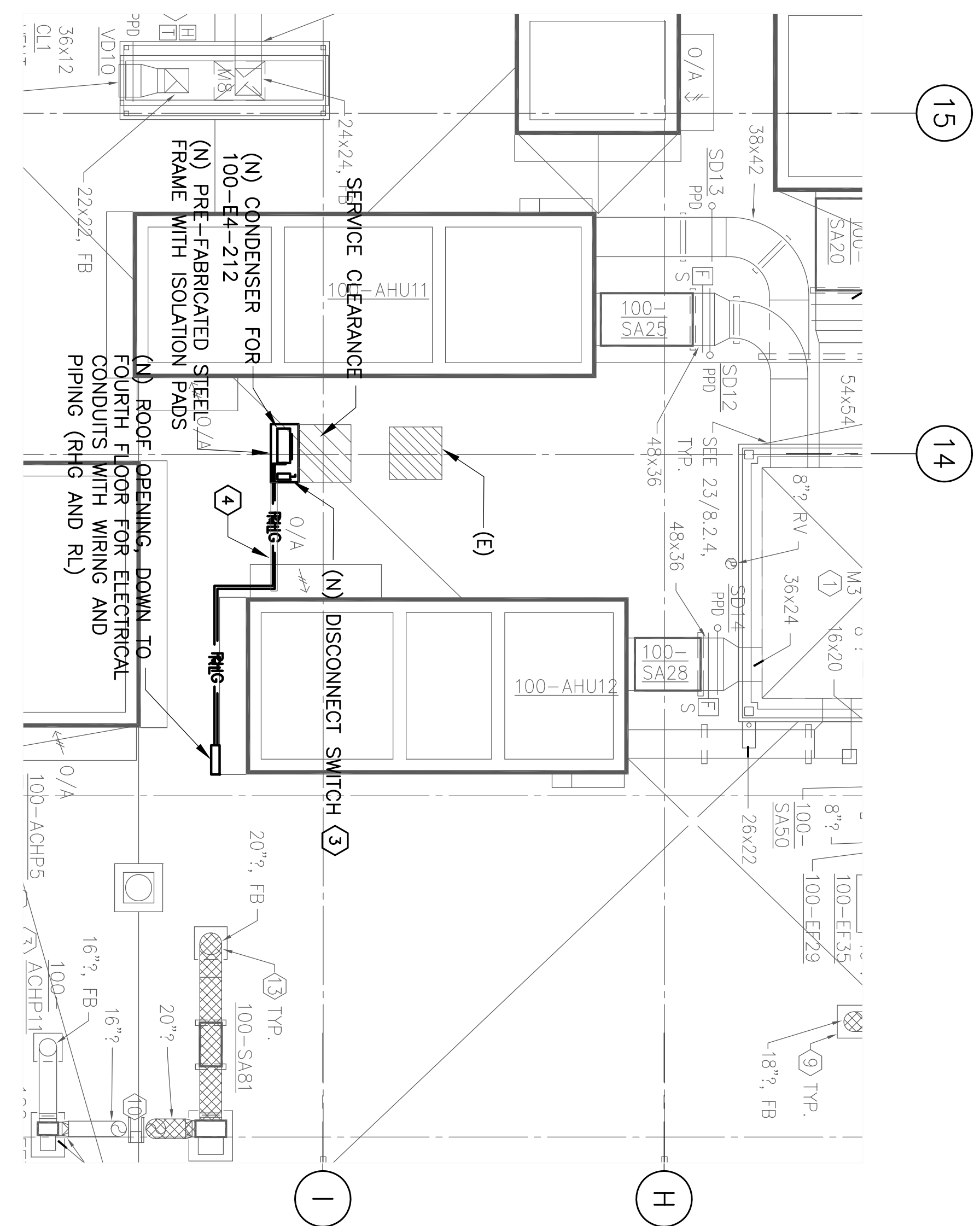
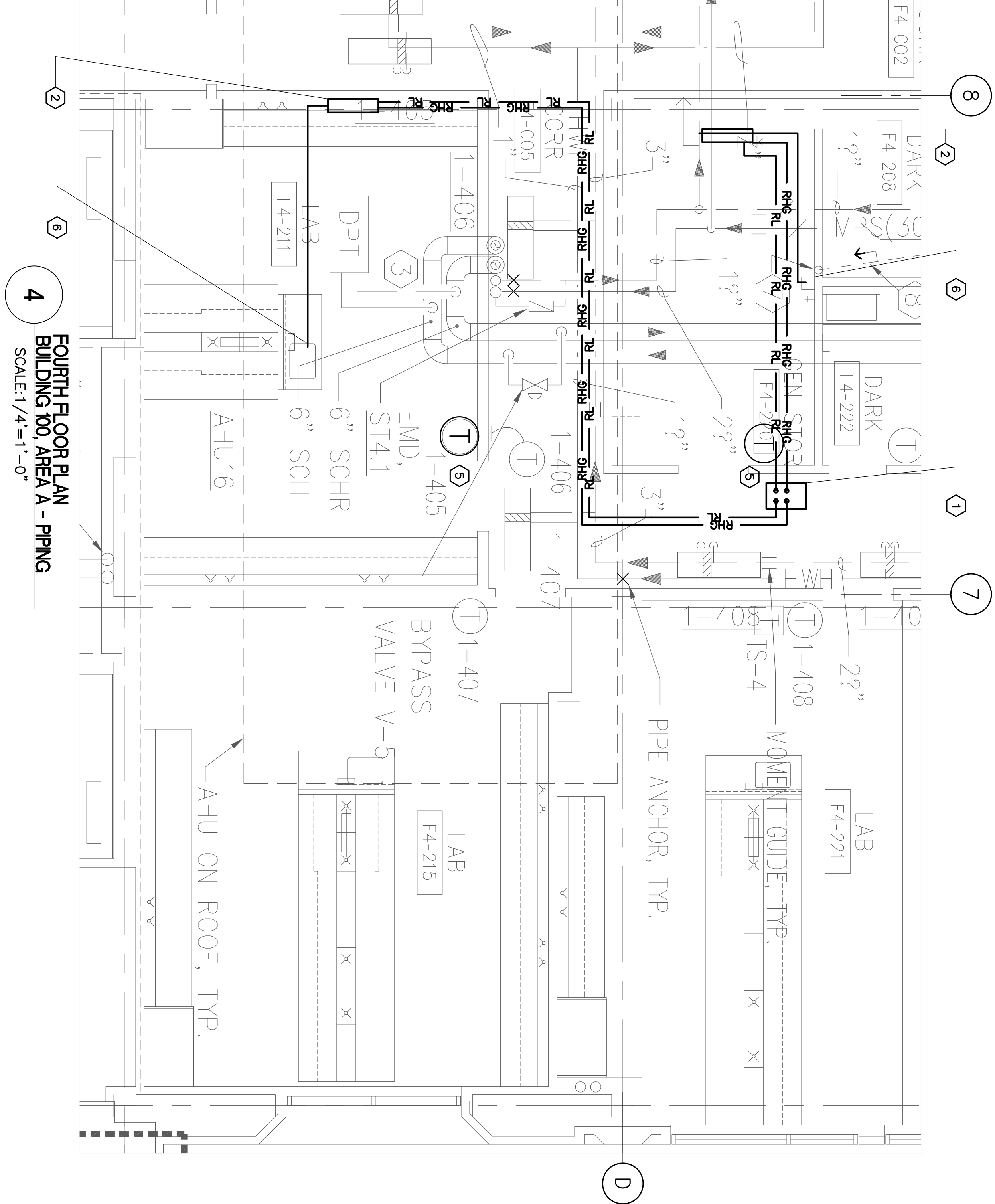


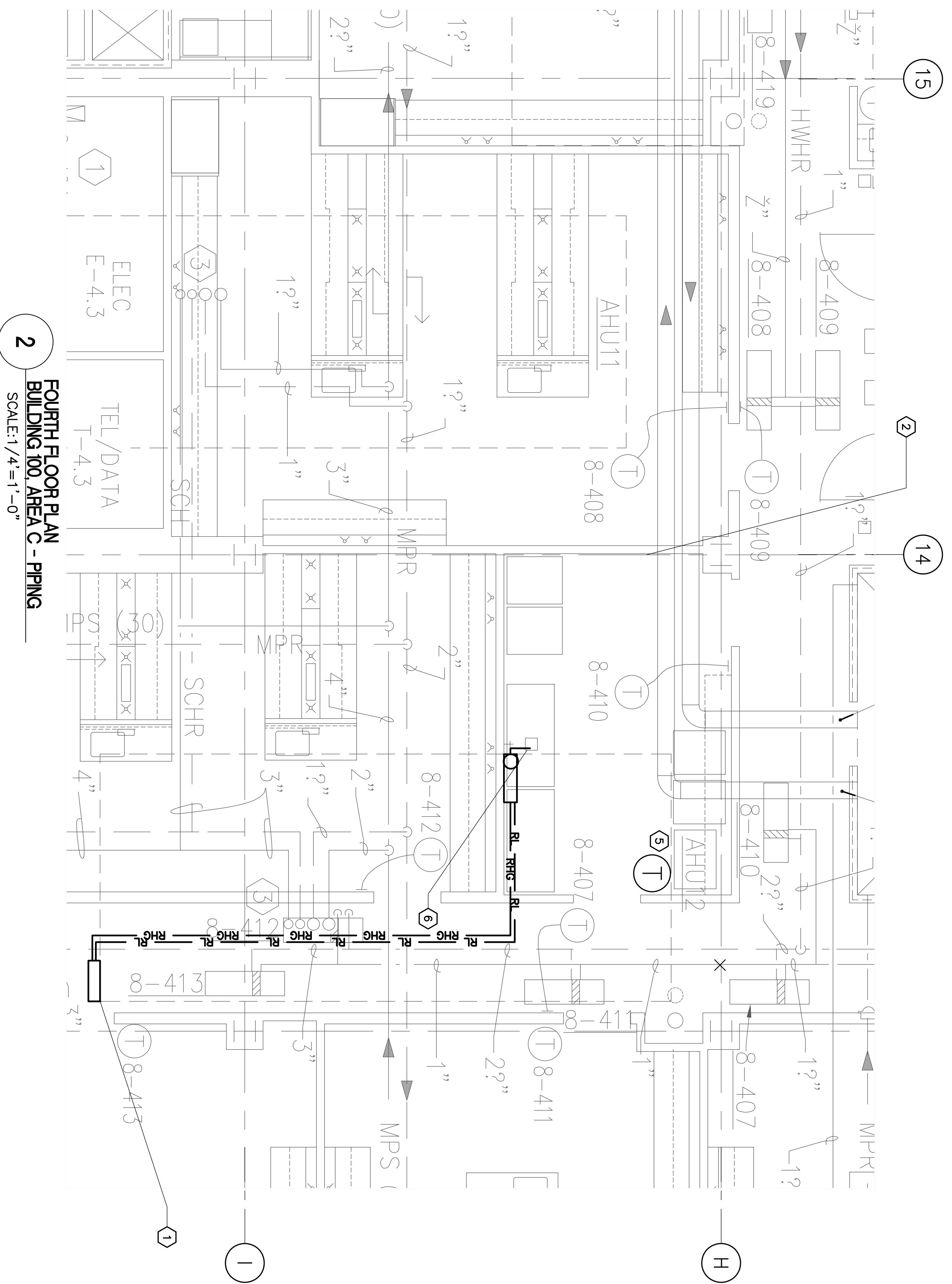
3 ROOF PLAN
BUILDING 100, AREA A - PIPING
SCALE: 1/8" = 1'-0"



1
ROOF PLAN
BUILDING 100, AREA C - PIPING
SCALE: 1/8" = 1' - 0"



4
FOURTH FLOOR PLAN
BUILDING 100, AREA A - PIPING
SCALE: 1/4" = 1'-0"



2
FOURTH FLOOR PLAN
BUILDING 100, AREA C - PIPING
SCALE: 1/4" = 1'-0"

- 1 UP TO ROOF WITH ELECTRICAL CONDUITS, WIRING, AND PIPING (RIG AND R.I.).
- 2 PROVIDE NEW WALL-MOUNTED INDOOR EVAPORATOR, MOUNT THE EXHAUSTOR, PER MANUFACTURER'S INSTALLATION RECOMMENDATIONS. INTERMEDIATE AND INSTANT CONDENSATE PUMP KIT TO THE EXHAUSTOR MANUFACTURER'S INSTALLATION INSTRUCTIONS.
- 3 HOME RUN ELECTRICAL POWER FROM NEW NEPA 3% RATED OUTDOOR TRANSFORMER AND SUBMIT SHOP DRAWINGS TO VA FOR REVIEW AND APPROVAL. FIELD VERIFY THE LOCATIONS FOR THE NEW PANEL, AND THE LOCATION OF WORK AND SPECIFICATIONS FOR DETAIL REQUIREMENTS.
- 4 PROVIDE RUSTIC COVER MATERIAL FOR PROTECTING ABOVE GRADE PIPING AND CONDUITS.
- 5 PROVIDE 6" DIA. SHALL LOCKDOWN, WITH EXTERIOR CONTRACTORS WHO SHALL PROVIDE 6" DIA. TO ROOF WITH ELECTRICAL CONDUITS, WIRING, SOFTWARE, ASSOCIATED CONTROL COMPONENTS, AND PROGRAMMING TO THE EXHAUSTOR MANUFACTURER'S INSTALLATION INSTRUCTIONS. PROVIDE STATEMENT OF WORK AND SPECIFICATIONS FOR DETAIL REQUIREMENTS.
- 6 CONTRACTORS SHALL PERFORM FIELD VERIFICATION OF EXISTING FLOOR DRAINS AND PIPE CONDENSATE TO THE EXISTING NEARBY FLOOR DRAINS THAT ARE TIED TO EXISTING SANITARY SEWER SYSTEM.

SHEET NOTES