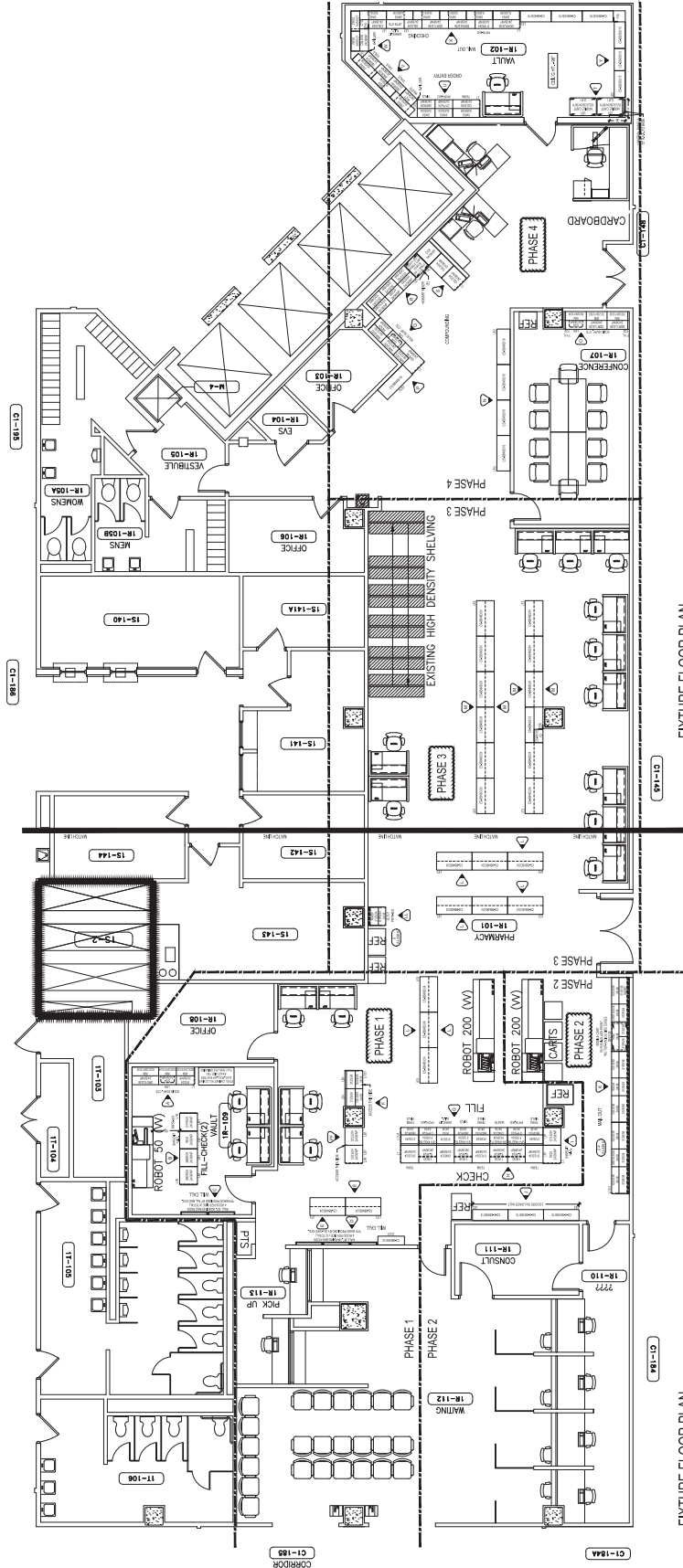


TOE KICK HEIGHT: 4"

MONACO HANGUP BAGS (BY ALL-MED S'YS.)
ELEV.C
(300) #103 BAGS (9"H)
(1) IDGP GREEN ID TAGS (25 PKG)
(2) PSR 4-36-72 ASSEMBLY: WS / RODS / BRKTS
ELEV.D
(700) #103 BAGS (9"H)
(2) IDGP GREEN ID TAGS (25 PKG)
(4) PSR 4-36-72 ASSEMBLY: WS / RODS / BRKTS




FIXTURE FLOOR PLAN

SCALE: 1/4" = 1'-0"

FIXTURE FLOOR PLAN

SCALE: 1/4" = 1'-0"

MATERIALS		
PLASTIC LAMINATE:		
GROUP 1:	CABINET EXTERIOR: TUSCAN WALNUT (7/01)	
	CABINET INTERIOR: TUSCAN WALNUT (7/01)	
	DOORS DRAWERS: TUSCAN WALNUT (7/01)	
	SHELVING: TUSCAN WALNUT (7/01)	
GROUP 2:	COUNTERTOPS: BRONZE LEGACY (4/06)	
	SOLID SURFACE COUNTERTOPS: CATALINA (01/03)	
	BINS: STAINLESS STEEL (03/04)	
GROUP 3:	BACK PANELS: NATURAL ALMOND (2/06)	
	BACK PANELS (BRANDS): TUSCAN WALNUT (7/01)	
COLOR SELECT INC:	BRANDS: ALMOND	
HARDWARE / COUNTERTOP EDGING		
CTOP EDGE:	T-ROCKING: CL TAUPPE	
HARDWARE:	POSTERGRACETS: ALMOND	
MISC. MATERIALS:		
FABRIC:	GALAXY: NA	
CARPET:	METROWALL: NA	
SEATING:	CHURCH: NA	
FLOORING TYPE		
	NA	
CLEANROOM:	COMMON EX	
NOTES:		
- FACTORY INSTALLATION DOES NOT INCLUDE REMOVAL OF ANY EXISTING CASEWORK OR FLOORING. CONTRACTOR TO REMOVE EXISTING CASEWORK AND FLOORING AND RE-INSTALL NEW CASEWORK AND FLOORING. CONTRACTOR TO PROVIDE FINAL CONNECTION THERE OF.		
- CEILING HEIGHT IS 11'-0" A.F.F.		
- ALL DIMENSIONS & FINISHES BY CONTRACTOR.		
<div></div> <div>R.C. Smith Company 14200 Southcross Drive West Burnsville, MN 55306 (952) 891-1111 (952) 891-1112 FAX: (952) 891-1113 TOLL FREE: (800) 891-1111</div> <div>© 2006 R.C. Smith Company. All Rights Reserved. The Content is the intellectual property of R.C. Smith Company. No part of this document may be reproduced without written permission from R.C. Smith Company. All Rights Reserved. The Content is the intellectual property of R.C. Smith Company. No part of this document may be reproduced without written permission from R.C. Smith Company.</div>		
REVISIONS:		
REVISION	REVISION DATE	REVISION BY
A	7/1/13	C.D.
PROJECT NAME:		
VA MEDICAL CENTER OUTPATIENT PHARMACY 1 VETERANS DRIVE MINNEAPOLIS, MN 55417		
PROJECT CONTACT:		
MATTHEW HEIMAN DESIGNER: C.D. DATE: 7/10/13 PROJECT / PLOT NAME: MN-10224 SCALE: 1 OF 5 DATE: A1		



FIXTURE FLOOR PLAN

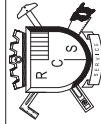
SCALE: 1/4" = 1'-0"

FIXTURE FLOOR

SCALE: 1/4" = 1'-0"

NOTES:

- FACTORY INSTALLATION DOES NOT INCLUDE REMOVAL OF ANY EXISTING CASEWORK/ EQUIPMENT. INSTALLATION OF PLUMBING, ELECTRICAL, COMPUTER, PHONE LINES OR FINAL CONNECTION THERE OF.
- CEILING HEIGHTS: _____ A.F.F.
- ALL SINK BOWLS & FAUCETS BY CONTRACTOR.



R.C. Smith Company
14200 Southcross Drive West
Burnsville, MN 55306

©2008 R.C. Smith Company. All rights in the text and any graphic content contained herein (the "Content") are owned by R.C. Smith Company under the United States and international copyright laws. **ALL RIGHTS RESERVED.** The Content is the confidential information of R.C. Smith Company and its use is authorized exclusively for the promotion of the R.C. Smith Company.

REVISIONS:		
REVISION	REVISION DATE	REVISION BY:
A	7.17.13	C.D.

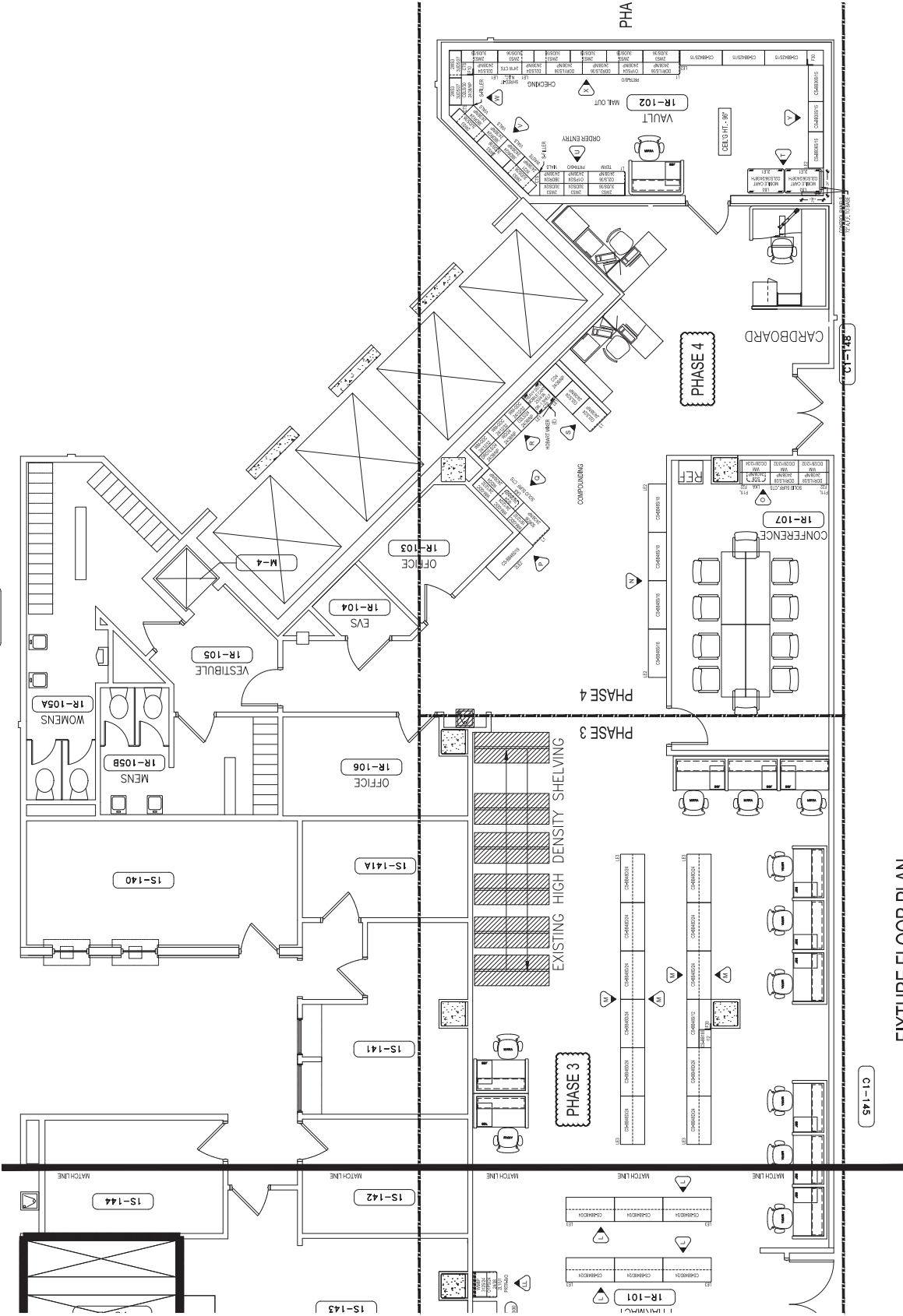
CT NAME: VA MEDICAL CENTER
OUTPATIENT PHARMACY
1 VETERANS DRIVE
MINNEAPOLIS, MN 55417

FACILITY CONTACT		SALES REPR:	
MATTHEW HEIMAN		DUANE OTNESS	
DRAWING	SCALE:	DATE	
C.D.	AS NOTED		TBD
PROJECT #/FILE NAME			
MN-10324			

TOE KICK HEIGHT: 4"

981-13

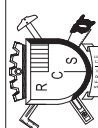
561-13



FIXTURE FLOOR PLAN

SCALE: 1/4" = 1'-0"

CI-145



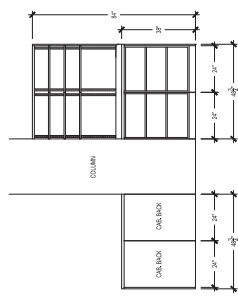
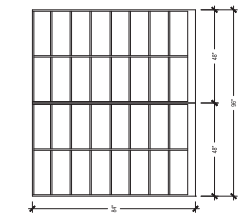
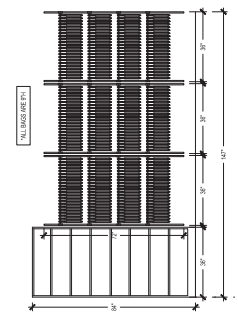
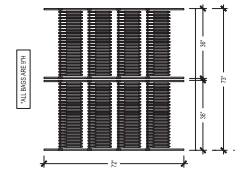
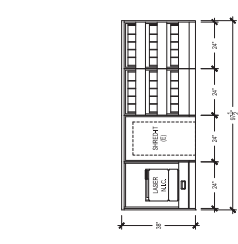
R.C. Smith Company
14200 Southcross Drive West
Burnsville, MN 55306

REVISIONS:
REVISION NO. REVISION DATE
A 7/1/13

VA MEDICAL CENTER
OUTPATIENT PHARMACY
1 VETERANS DRIVE
MINNEAPOLIS, MN 55417

PROJECT NO. 145
PROJECT NAME
PROJECT DATE
PROJECT LOCATION

3 OF 5 A3



Technical drawing of a modular shelving unit, labeled "PASE 120x240". The drawing shows a side view of the unit with dimensions and labels. The unit is composed of several modules: a top shelf (120x240 cm), a middle shelf (120x240 cm), and a bottom shelf (120x240 cm). The total height is 240 cm. The unit is labeled "PASE 120x240" and "PASE 120x240".

[illegible]

A diagram of a rectangular grid. The grid is 3 units wide and 4 units high. The width is labeled $3x$ and the height is labeled $4y$. The grid is divided into 12 smaller rectangles, each with dimensions x by y .

1000

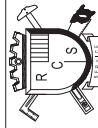
1000

1

PLASTIC LAMINATE

[illegible]

- FACTORY INSTALLATION DOES NOT INCLUDE REMOVAL OF ANY EXISTING CASEWORK/EQUIPMENT. INSTALLATION OF PLUMBING, ELECTRICAL/COMPUTER, PHONE LINES OR FINAL CONNECTION THERE OF.
- CEILING HEIGHT IS ____ A.F.F.
- ALL SINK BOWLS & FAUCETS BY CONTRACTOR.



R.C. Smith Company
14200 Southcross Drive West
Burnsville, MN 55306

©2008 R.C. Smith Company. All copyrights in the text and any graphic content contained herein (the "Content") are owned by R.C. Smith Company under the United States and international copyright laws. **ALL RIGHTS RESERVED.** The Content is the confidential information of R.C. Smith Company and its use is authorized exclusively for the promotion of the R.C. Smith Company.

HTTP://WWW.RCSMTH.COM
 (952) 854-0711 / (952) 854-8160 FAX: (800) 747-7648 TOLL FREE

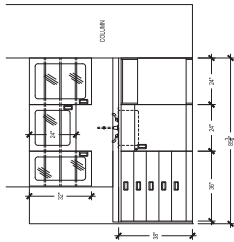
REVISION	REVISION DATE	REVISION BY:
A	7/17/13	C.D.

CT NAME: VA MEDICAL CENTER
OUTPATIENT PHARMACY
1 VETERANS DRIVE
MINNEAPOLIS, MN 55417

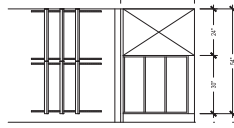
FACILITY CONTACT: MATTHEW HEIMAN	SALES REPRESENTATIVE: DUANE OTNESS	
DRAWING NO. C.D.	SCALE: AS NOTED	DATE: TBD
PROJECT # & E. NAME: MN-10324		

4 OF 5

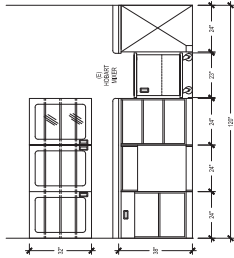
TOE KICK HEIGHT: 4"



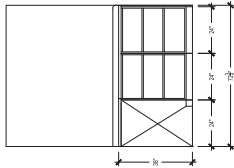
9 ELEVATION
SCALE 3/4" = 1'-0"



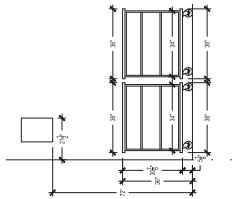
8 ELEVATION
SCALE 3/4" = 1'-0"



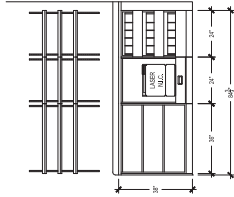
6 ELEVATION
SCALE 3/4" = 1'-0"



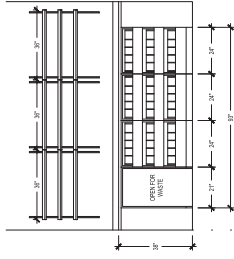
5 ELEVATION
SCALE 3/4" = 1'-0"



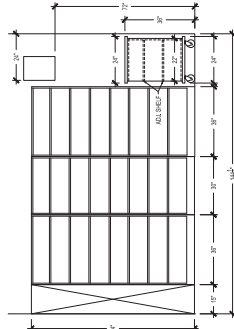
4 ELEVATION
SCALE 3/4" = 1'-0"



3 ELEVATION
SCALE 3/4" = 1'-0"



2 ELEVATION
SCALE 3/4" = 1'-0"



1 ELEVATION
SCALE 3/4" = 1'-0"



7 ELEVATION
SCALE 3/4" = 1'-0"

MATERIALS

PLASTIC LAMINATE

GROUP 1: CABINET EXTERIOR: TUSCAN WALNUT (7001)

DOORS: DAWGWOOD: TUSCAN WALNUT (7001)

SINKS: DAWGWOOD: TUSCAN WALNUT (7001)

COUNTERTOPS: BRONZE LEADGLASS (4006)

COLD SURFACE COUNTERTOPS: CATALINA (0103)

GROUP 2: SINKS: BRONZE LEADGLASS (4006)

BACK PANELS: BRONZE LEADGLASS (4006)

GROUP 3: BACK PANELS: TUSCAN WALNUT (7001)

BACK PANELS: BRONZE LEADGLASS (4006)

COLOR SELECT INC. BRONZE LEADGLASS (4006)

COLOR SELECT INC. BRONZE LEADGLASS (4006)

COLOR SELECT INC. BRONZE LEADGLASS (4006)

COLOR SELECT INC. BRONZE LEADGLASS (4006)

COLOR SELECT INC. BRONZE LEADGLASS (4006)

COLOR SELECT INC. BRONZE LEADGLASS (4006)

COLOR SELECT INC. BRONZE LEADGLASS (4006)

COLOR SELECT INC. BRONZE LEADGLASS (4006)

COLOR SELECT INC. BRONZE LEADGLASS (4006)

COLOR SELECT INC. BRONZE LEADGLASS (4006)

COLOR SELECT INC. BRONZE LEADGLASS (4006)

COLOR SELECT INC. BRONZE LEADGLASS (4006)

COLOR SELECT INC. BRONZE LEADGLASS (4006)

COLOR SELECT INC. BRONZE LEADGLASS (4006)

COLOR SELECT INC. BRONZE LEADGLASS (4006)

COLOR SELECT INC. BRONZE LEADGLASS (4006)

COLOR SELECT INC. BRONZE LEADGLASS (4006)

COLOR SELECT INC. BRONZE LEADGLASS (4006)

COLOR SELECT INC. BRONZE LEADGLASS (4006)

COLOR SELECT INC. BRONZE LEADGLASS (4006)

COLOR SELECT INC. BRONZE LEADGLASS (4006)

COLOR SELECT INC. BRONZE LEADGLASS (4006)

COLOR SELECT INC. BRONZE LEADGLASS (4006)

COLOR SELECT INC. BRONZE LEADGLASS (4006)

COLOR SELECT INC. BRONZE LEADGLASS (4006)

COLOR SELECT INC. BRONZE LEADGLASS (4006)

COLOR SELECT INC. BRONZE LEADGLASS (4006)

COLOR SELECT INC. BRONZE LEADGLASS (4006)

COLOR SELECT INC. BRONZE LEADGLASS (4006)

COLOR SELECT INC. BRONZE LEADGLASS (4006)

COLOR SELECT INC. BRONZE LEADGLASS (4006)

COLOR SELECT INC. BRONZE LEADGLASS (4006)

COLOR SELECT INC. BRONZE LEADGLASS (4006)

COLOR SELECT INC. BRONZE LEADGLASS (4006)

COLOR SELECT INC. BRONZE LEADGLASS (4006)

COLOR SELECT INC. BRONZE LEADGLASS (4006)

COLOR SELECT INC. BRONZE LEADGLASS (4006)

COLOR SELECT INC. BRONZE LEADGLASS (4006)

COLOR SELECT INC. BRONZE LEADGLASS (4006)

COLOR SELECT INC. BRONZE LEADGLASS (4006)

COLOR SELECT INC. BRONZE LEADGLASS (4006)

COLOR SELECT INC. BRONZE LEADGLASS (4006)

COLOR SELECT INC. BRONZE LEADGLASS (4006)

COLOR SELECT INC. BRONZE LEADGLASS (4006)

COLOR SELECT INC. BRONZE LEADGLASS (4006)

COLOR SELECT INC. BRONZE LEADGLASS (4006)

COLOR SELECT INC. BRONZE LEADGLASS (4006)

COLOR SELECT INC. BRONZE LEADGLASS (4006)

COLOR SELECT INC. BRONZE LEADGLASS (4006)

COLOR SELECT INC. BRONZE LEADGLASS (4006)

COLOR SELECT INC. BRONZE LEADGLASS (4006)

COLOR SELECT INC. BRONZE LEADGLASS (4006)

COLOR SELECT INC. BRONZE LEADGLASS (4006)

NOTES:

1. FACTORY INSTALLATION DOES NOT INCLUDE REMOVAL OF ANY EXISTING CABS/STOVE/FRIDGE. CONTRACTOR TO REMOVE EXISTING CABS/STOVE/FRIDGE AND MAKE FINAL CONNECTION THERE OF.

2. ALL DIMENSIONS & FINISHES BY CONTRACTOR.



R.C. Smith Company
14200 Southcross Drive West
Burnsville, MN 55306

HTTP://WWW.RCSMITH.COM

862.554.0711 / 862.554.0712 FAX: 862.554.0713 TOLL FREE

©2015 R.C. Smith Company. All rights reserved. No part of this publication may be reproduced, stored in a retrieval system, or transmitted, in any form or by any means, electronic, mechanical, photocopying, recording, or by any information storage and retrieval system, without the prior written permission of R.C. Smith Company. All rights reserved. The content is the confidential information of R.C. Smith Company and is not to be distributed outside of the R.C. Smith Company.

REVISIONS:

REVISION	REVISION DATE	REVISION BY
1	7/1/15	C.D.
2		
3		
4		
5		
6		
7		
8		
9		
10		

PROJECT NAME:
VA MEDICAL CENTER
OUTPATIENT PHARMACY
1 VETERANS DRIVE
MINNEAPOLIS, MN 55417

PROJECT CONTACT:	PROJECT SITE:
MATTHEW HEIMAN	DUANE OTNESS
DESIGNER:	DATE:
C.D.	AS NOTED
PROJECT #/REV NAME:	TBD
MIN-10224	
PROJECT NUMBER:	

5 OF 5 A5

VA Medical Center
 Outpatient Pharmacy
 Minneapolis, MN
 MN10324A

Area	Qty	RCS/VA Code	Description
A	1	DRO1LS/36/24/38	DWR/OPEN UNIT W/1 LOW. SHELF 36" W 24"D 38"H
	1	S/24/24/38	SINK UNIT W/FAUCET/HANDLES 24"W 24"D 38"H
	1	WD/24/24/38	WASTE/DOOR UNIT W/O BASKET 24"W 24"D 38"H
	14	S/SURFACE/5	SOLID SURFACE COUNTERTOP UPCHARGE PER SF
	2	DC/24	2' WIDE UPPER DOOR CABINET
	1	DC/36	3' WIDE UPPER DOOR CABINET
	4	GDP	GLASS DOOR UPCHARGE
	1	L1	LOWER END PANEL FOR 38" HIGH MODULES
	1	BD50S/24/M/SH	TALL STORAGE W/MOTORIZED SHUTTER 50"W
	2	LE3	LAMINATED END STYLE #3
B	1	O1PS/24/24/38	OPEN UNIT W/1 HEAVY DUTY PULL OUT SHELF
	1	W/24/24/38	WASTE MODULE W/O BASKET 24"W 24"D 38"H
	2	3BDR/24/24/38	3 BOTTLE DRAWER UNIT 24"W 24"D 38"H
	2	L1R	LOWER END PANEL W/RADIUS FOR 38"H
	4	LB1	LAMINATED BACK STYLE #1
C/D	1000	HB104	HANG BAG STYLE 104
	3	IDGP	ID TAG PACKAGE
	6	PSR4	WALL MOUNT RACK ASSEMBLY
	1	BB36S/12	SINGLE BULK STORAGE 36"W X 12"D X 84"H
	2	LE2	LAMINATED END STYLE #2
E	2	BB48D/24	DOUBLE BULK STORAGE 48"W X 24"D X 84"H
	2	LE3	LAMINATED END STYLE #3
F/FF	4	O2LS/24/24/38	OPEN UNIT W/2 LOWER SHELVES 24"W 24"D 38"H
	2	LBP/24	LAMINATED BACK PANEL/ 24" WIDE
	6	12S/24	12" DEEP UPPER SHELF 24" WIDE
	1	L1	LOWER END PANEL FOR 38" HIGH MODULES
	1	L1R	LOWER END PANEL W/RADIUS FOR 38"H
	1	U1	UPPER END PANEL FOR 38" HIGH MODULES
	4	LB1	LAMINATED BACK STYLE #1
G-I	4	3BDR/24/24/38	3 BOTTLE DRAWER UNIT 24"W 24"D 38"H
	2	WD/24/24/38	WASTE/DOOR UNIT W/O BASKET 24"W 24"D 38"H
	2	O1PS/24/24/38	OPEN UNIT W/1 HEAVY DUTY PULL OUT SHELF
	6	W/24/24/38	WASTE MODULE W/O BASKET 24"W 24"D 38"H
	4	HB/INSERT	HANG BAG ROD/CLETE PACKAGE / PER
	4	O1LS/24/24/38	OPEN UNIT W/1 LOWER SHELF 24"W 24"D 38"H
	8	LBP/24	LAMINATED BACK PANEL/ 24" WIDE
	24	12S/24	12" DEEP UPPER SHELF 24" WIDE
	3	L1	LOWER END PANEL FOR 38" HIGH MODULES
	2	U1	UPPER END PANEL FOR 38" HIGH MODULES

VA Medical Center
 Outpatient Pharmacy
 Minneapolis, MN
 MN10324A

Area	Qty	RCS/VA Code	Description
	2	LB1	LAMINATED BACK STYLE #1
J	3	BB48S/15	SINGLE BULK STORAGE 48" W X 15" D X 84" H
	6	1DP	ONE DOOR PACKAGE
	2	LE2	LAMINATED END STYLE #2
K	5	O2LS/36/24/38	OPEN UNIT W/2 LOWER SHELVES 36"W 24"D 38"H
	2	DRO1LS/24/24/38	DWR/OPEN UNIT W/1 LOW. SHELF 24" W 24"D 38"H
	1	SD/42/24/38	STRAIGHT DESK 42"W 24"D 38"H
	1	WD/24/24/38	WASTE/DOOR UNIT W/O BASKET 24"W 24"D 38"H
	1	MC/36/21/35	MOBILE CART 36"W 21"D 35"H
	5	LBP/24	LAMINATED BACK PANEL/ 24" WIDE
	5	LBP/36	LAMINATED BACK PANEL 36"W
	15	12S/24	12" DEEP UPPER SHELF 24" WIDE
	15	12S/36	12" DEEP UPPER SHELF 36" WIDE
	1	L1	LOWER END PANEL FOR 38" HIGH MODULES
	1	U1	UPPER END PANEL FOR 38" HIGH MODULES
	24	WM	AL3300 SERIES WIREMOLD PER LIN. FT.
	12	WM/DUP	RACEWAY OFFSET DUPLEX COVER KIT
LL	1	O1PS/24/24/38	OPEN UNIT W/1 HEAVY DUTY PULL OUT SHELF
	1	LBP/24	LAMINATED BACK PANEL/ 24" WIDE
	3	12S/24	12" DEEP UPPER SHELF 24" WIDE
	2	L1	LOWER END PANEL FOR 38" HIGH MODULES
	2	U1	UPPER END PANEL FOR 38" HIGH MODULES
	2	WM	AL3300 SERIES WIREMOLD PER LIN. FT.
	2	WM/DUP	RACEWAY OFFSET DUPLEX COVER KIT
L	3	BB48D/24	DOUBLE BULK STORAGE 48"W X 24"D X 84"H
PH1	2	LE3	LAMINATED END STYLE #3
L/M	17	BB48D/24	DOUBLE BULK STORAGE 48"W X 24"D X 84"H
	1	BB48S/12	SINGLE BULK STORAGE 48"W X 12"D X 84"H
	1	BB18S/12	SINGLE BULK STORAGE 18"W X 12"D X 84"H
	1	F30	BOTTLE BAY FILLER
	8	LE3	LAMINATED END STYLE #3
N/P	5	BB48S/18	SINGLE BULK STORAGE 48" W X 18" D X 84" H
	4	LE2	LAMINATED END STYLE #2
O	1	S/30/24/38	SINK UNIT W/FAUCET/HANDLES 30"W 24"D 38"H
	2	DDR1LS/30/24/38	DOOR/DRAWER UNIT W/1 LS 30"W 24"D 38"H
	14	S/SURFACE/5	SOLID SURFACE COUNTERTOP UPCHARGE PER SF
	3	DC/30	30" WIDE UPPER DOOR CABINET

VA Medical Center
 Outpatient Pharmacy
 Minneapolis, MN
 MN10324A

Area	Qty	RCS/VA Code	Description
	2	F11	LOWER FILLER WITH KICK
	2	F22	UPPER CABINET CORNER FILLER
Q-S	1	5DR/36/24/38	5 DRAWER UNIT 36"W 24"D 38"H
	1	S/24/24/38	SINK UNIT W/FAUCET/HANDLES 24"W 24"D 38"H
	2	WD/24/24/38	WASTE/DOOR UNIT W/O BASKET 24"W 24"D 38"H
	2	DRO1LS/24/24/38	DWR/OPEN UNIT W/1 LOW. SHELF 24" W 24"D 38"H
	3	O2LS/24/24/38	OPEN UNIT W/2 LOWER SHELVES 24"W 24"D 38"H
	1	C/24/24/38	CORNER UNIT 24"W 24"D 38"H
	14	S/SURFACE/5	SOLID SURFACE COUNTERTOP UPCHARGE PER SF
	4	CTS	SF OF STANDARD COUNTERTOP W / SPLASH
	4	CASTER	CASTER
	6	DC/24	2' WIDE UPPER DOOR CABINET
	6	GDP	GLASS DOOR UPCHARGE
	2	L1	LOWER END PANEL FOR 38" HIGH MODULES
	4	LE1	LAMINATED END STYLE #1
	1	LB1	LAMINATED BACK STYLE #1
T	2	MC/36/24/36	MOBILE CART 36"W 24"D 36"H
U-X	1	O2LS/36/24/38	OPEN UNIT W/2 LOWER SHELVES 36"W 24"D 38"H
	2	O1PS/24/24/38	OPEN UNIT W/1 HEAVY DUTY PULL OUT SHELF
	2	D2LS/24/24/38	DOOR UNIT W/2 LOWER SHELVES 24"W 24"D 38"H
	4	3BDR/24/24/38	3 BOTTLE DRAWER UNIT 24"W 24"D 38"H
	16	CTS	SF OF STANDARD COUNTERTOP W / SPLASH
	1	O2LS/30/24/38	OPEN UNIT W/2 LOWER SHELVES 30"W 24"D 38"H
	1	W/24/24/38	WASTE MODULE W/O BASKET 24"W 24"D 38"H
	3	DDR1LS/36/24/38	DOOR/DRAWER UNIT W/1 LS 36"W 24"D 38"H
	1	LS/36/24	ADJUSTABLE LOWER SHELF 36"W
	3	F10	LOWER CORNER FILLER WITH KICK
	28	WS3	WALL STANDARD 36" LONG
	6	UDS/24	GRAVITY FEED UPPER SHELF / 24" WIDE
	6	UDS/30	GRAVITY FEED UPPER SHELF / 30" WIDE
	30	UDS/36	GRAVITY FEED UPPER SHELF / 36" WIDE
	2	L1	LOWER END PANEL FOR 38" HIGH MODULES
	2	LE1	LAMINATED END STYLE #1
X/Y	3	BB48S/15	SINGLE BULK STORAGE 48" W X 15" D X 84" H
	2	BB36S/15	SINGLE BULK STORAGE 36" W X 15" D X 84" H
	1	BB30S/15	SINGLE BULK STORAGE 30" W X 15" D X 84" H
	1	F30	BOTTLE BAY FILLER
	2	LE2	LAMINATED END STYLE #2