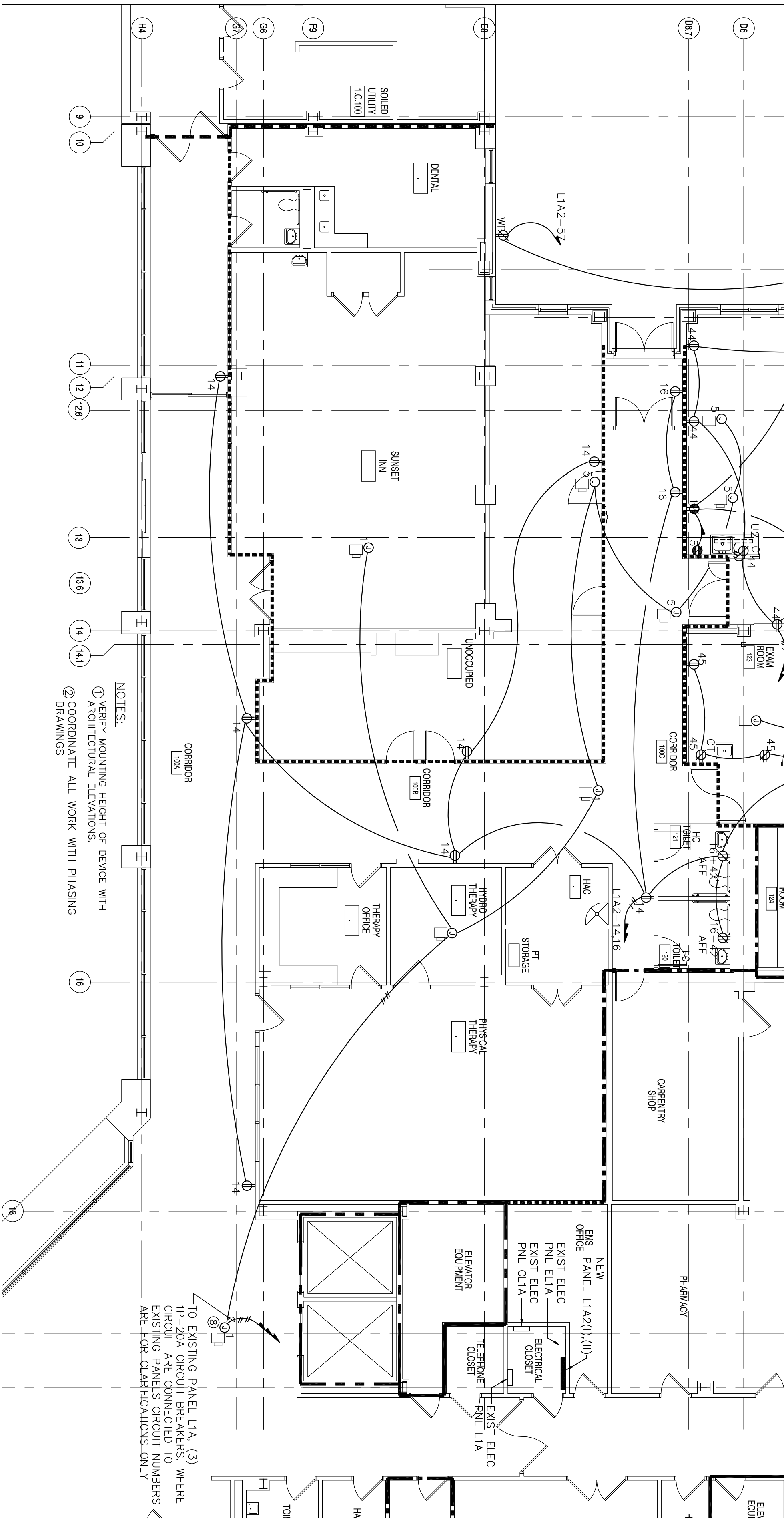


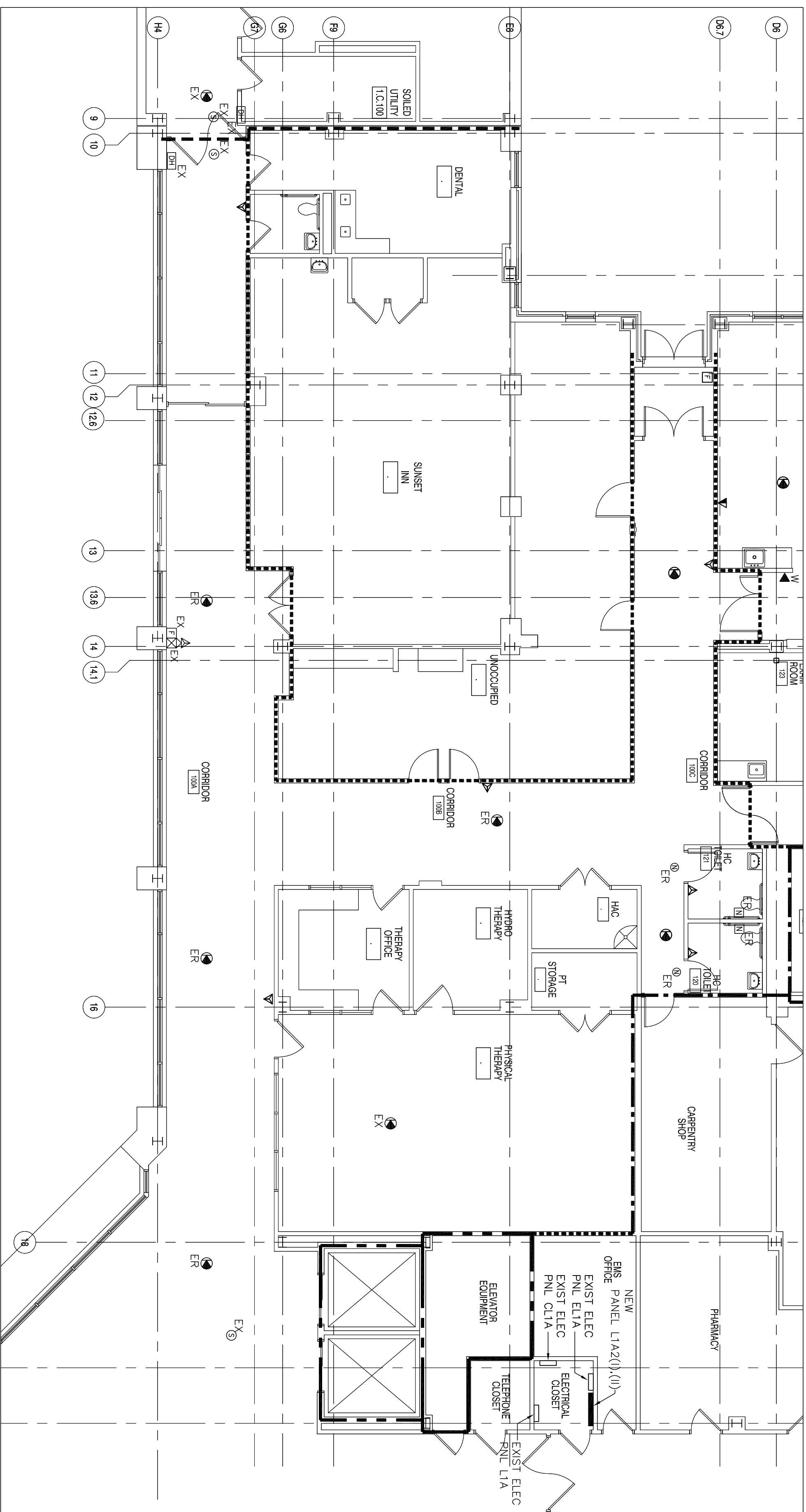
1ST FLOOR LIGHTING – ALTERNATE NO.9

1/8" = 1'-0"



1ST FLOOR POWER – ALTERNATE NO.9

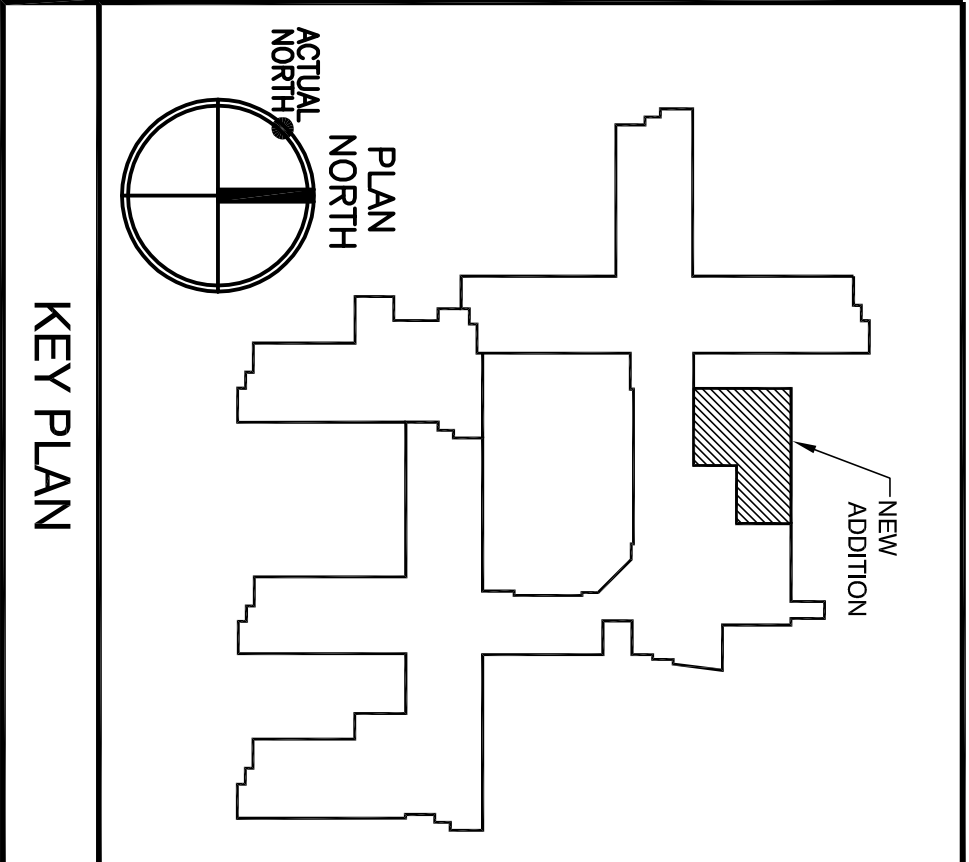
1/8" = 1'-0"



1ST FLOOR SIGNAL – ALTERNATE NO.9

1/8" = 1'-0"

PARTITION LEGEND	
.....	SMOKE PARTITION - PREVENT THE PASSAGE OF SMOKE
-----	SMOKE BARRIER - 1 HR RATING
-----	2 HR RATED PARTITION
-----	1 HR RATED PARTITION



Revisions		Date	
<div><div><div></div><div></div><div></div></div><div><div></div><div></div><div></div></div></div>			
<div><div><div>Department of Veterans Affairs New Jersey Health Care System 151 Knollcroft Road Lyons, New Jersey 07939</div><div><div></div><div></div><div></div></div></div></div>			
A Professional Corporation		Architecture Planning Interiors 924 Cherry Street Phila., PA 19107 (215) 625-2500	
Piller & Piller Associates, LLC 4220 Main Street Philadelphia, PA 19127 T: (215) 508-3000 F: (215) 508-3000		The Karpis Group 1218 Chestnut Street Philadelphia, PA 19107 T: (215) 288-1984 F: (215) 288-8980	
CHROPER INC. CONSULTING ENGINEERS 241 WOODRIDGE DRIVE BIRMINGHAM, AL 35243 Mobile: (205) 975-1210 Fax: (205) 975-1210 Engineer NJ NO 28943		Drawing Title ELECTRICAL: FIRST FLOOR – ALTERNATE NO. 9	
Approved Chief Facilities Engineering Serv.		Drawn SMR	
Approved Chief Executive Officer		Checked JA	
Project Title CLC SUPPORT SPACES VAMC - LYONS		Building Number 135	
Date 2/05/13		Contact Number 561-OSI-136	
Project No. 1009		Date 2/05/13	
VETERANS ADMINISTRATION		E-18 1009 OF	