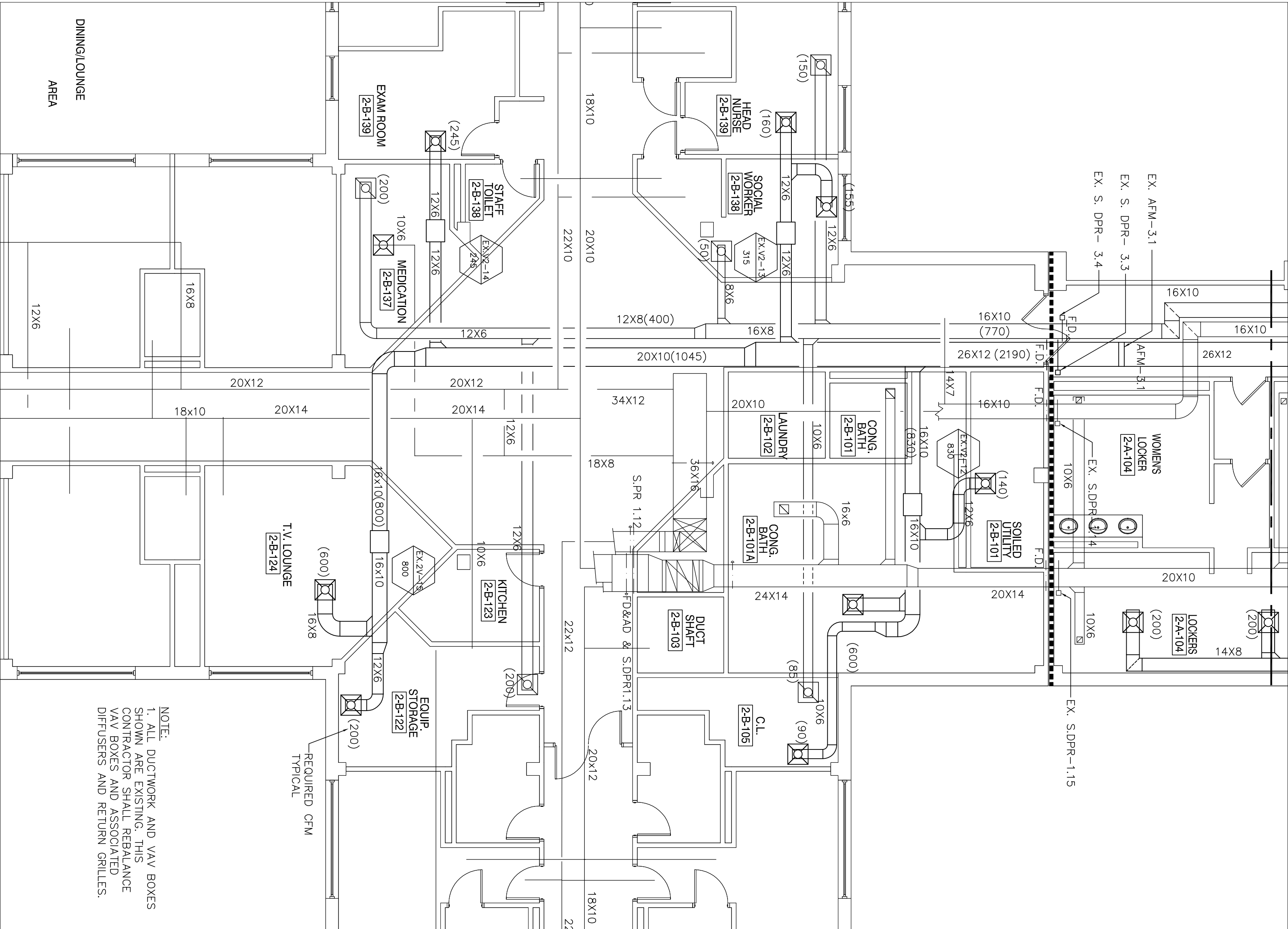


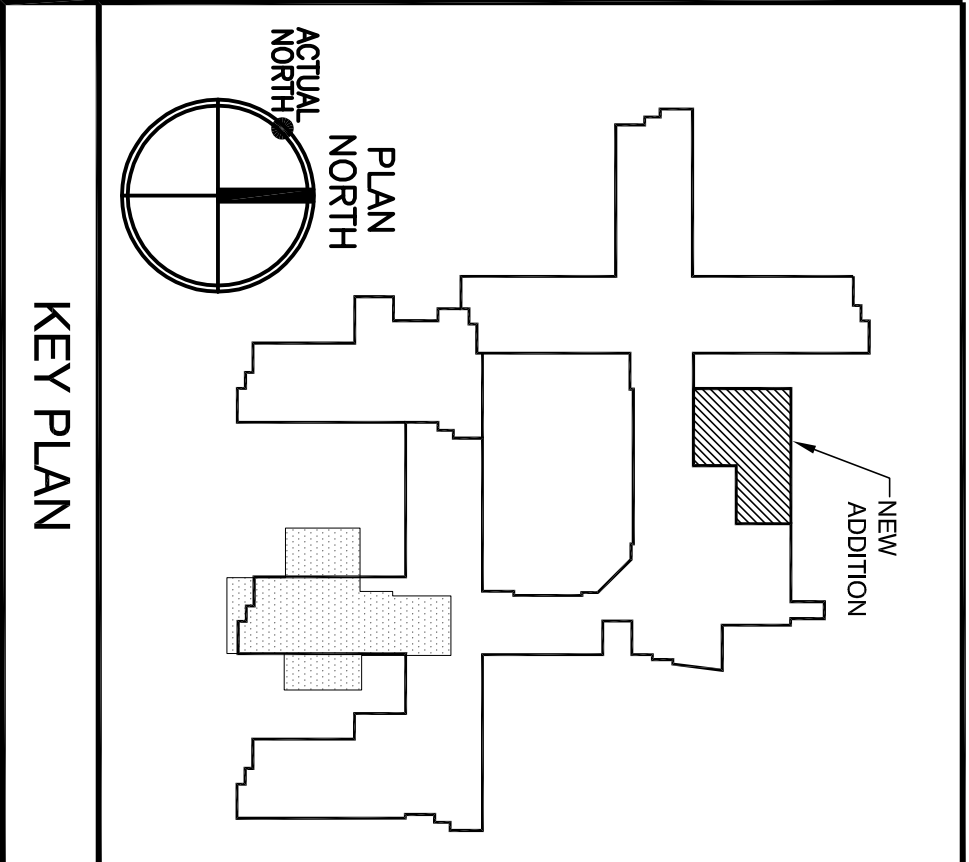
1ST EAST WING
FLOOR PLAN

1/8" = 1'-0"

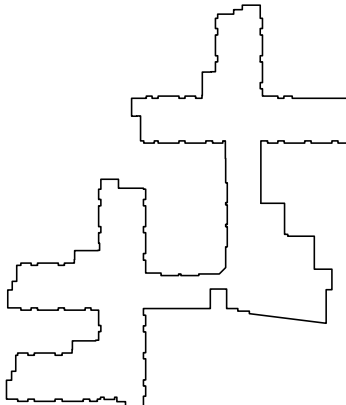
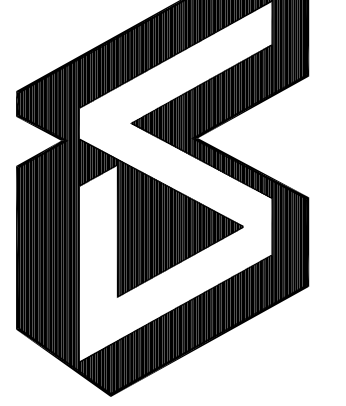


2ND EAST WING
FLOOR PLAN

1/8" = 1'-0"



4/19/13

Revisions	Date	  <p>Department of Veterans Affairs New Jersey Health Care System 151 Knollcroft Road Lyons, New Jersey 07939</p>	 <p>BLM Architects</p>	<p>Blitz & Bantz Associates, LLC 4220 Main Street Philadelphia, PA 19127 T: (215) 506-5900 F: (215) 506-5900</p>	<p>The Karpale Group 1218 Chestnut Street Philadelphia, PA 19107 T: (215) 288-1994 F: (215) 288-8950</p>	<p>CONSULTING ENGINEERS CHRODE INC. 241 Walnut Drive Brimwood Park, NJ 07007 Main: (201) 751-1210 Fax: (201) 751-1210 Engineer NJ NO 28943</p>	<p>Drawing Title MECHANICAL: FIRST AND SECOND FLOOR-PARTIAL PLANS</p>	<p>Project Title CLC SUPPORT SPACES VAMC - LYONS</p>	<p>Date 2/05/13</p>	<p>Project No. 1009</p>
Approved Chief, Facilities Engineering Serv.	Drawn JAA	Building Number 135	Contract Number 561-CS1-136	<p>Approved Chief Executive Officer</p>	Checked JA	Location LYONS, NJ	<p>Dwg. OF M-5</p>	<p>VETERANS ADMINISTRATION</p>		