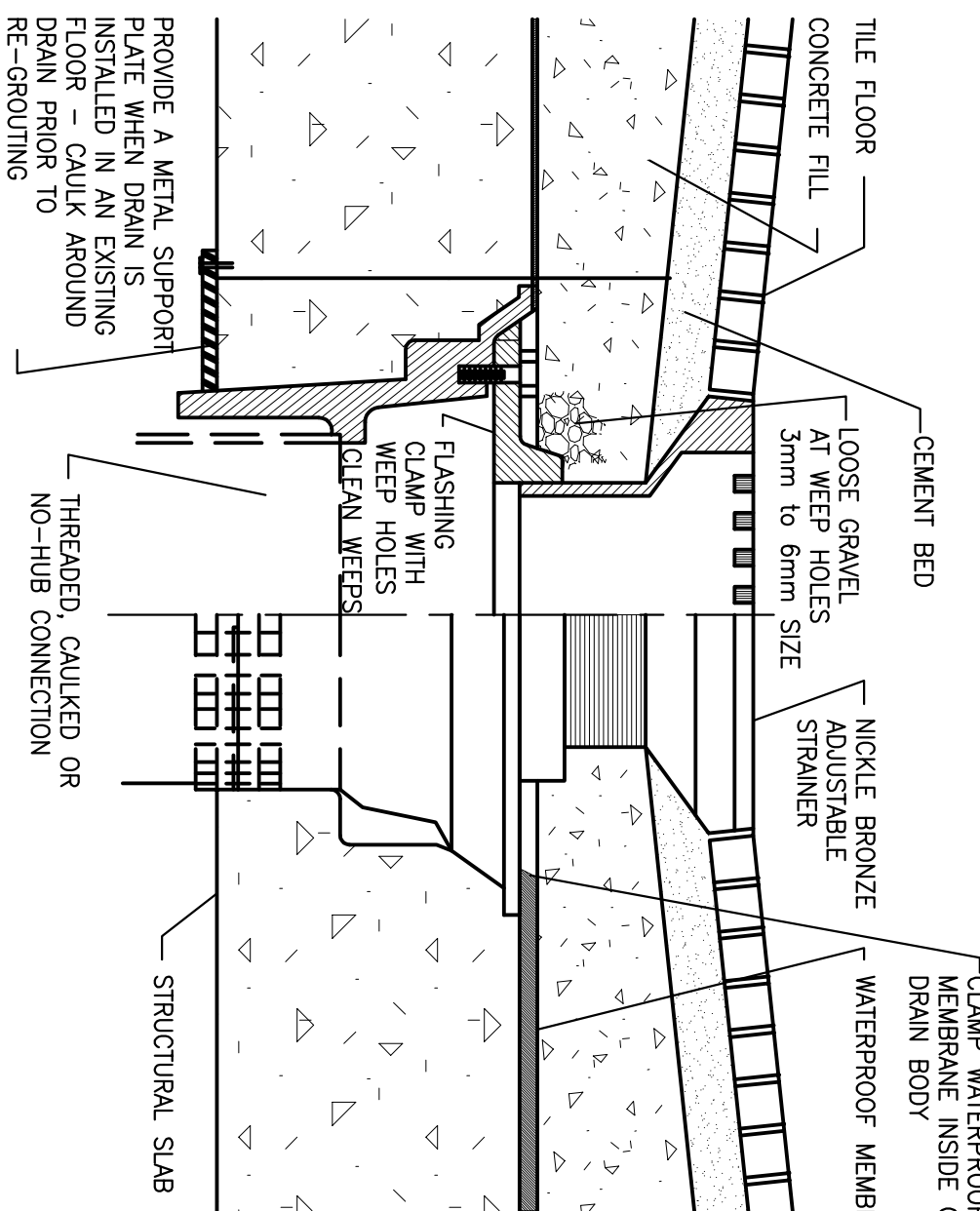


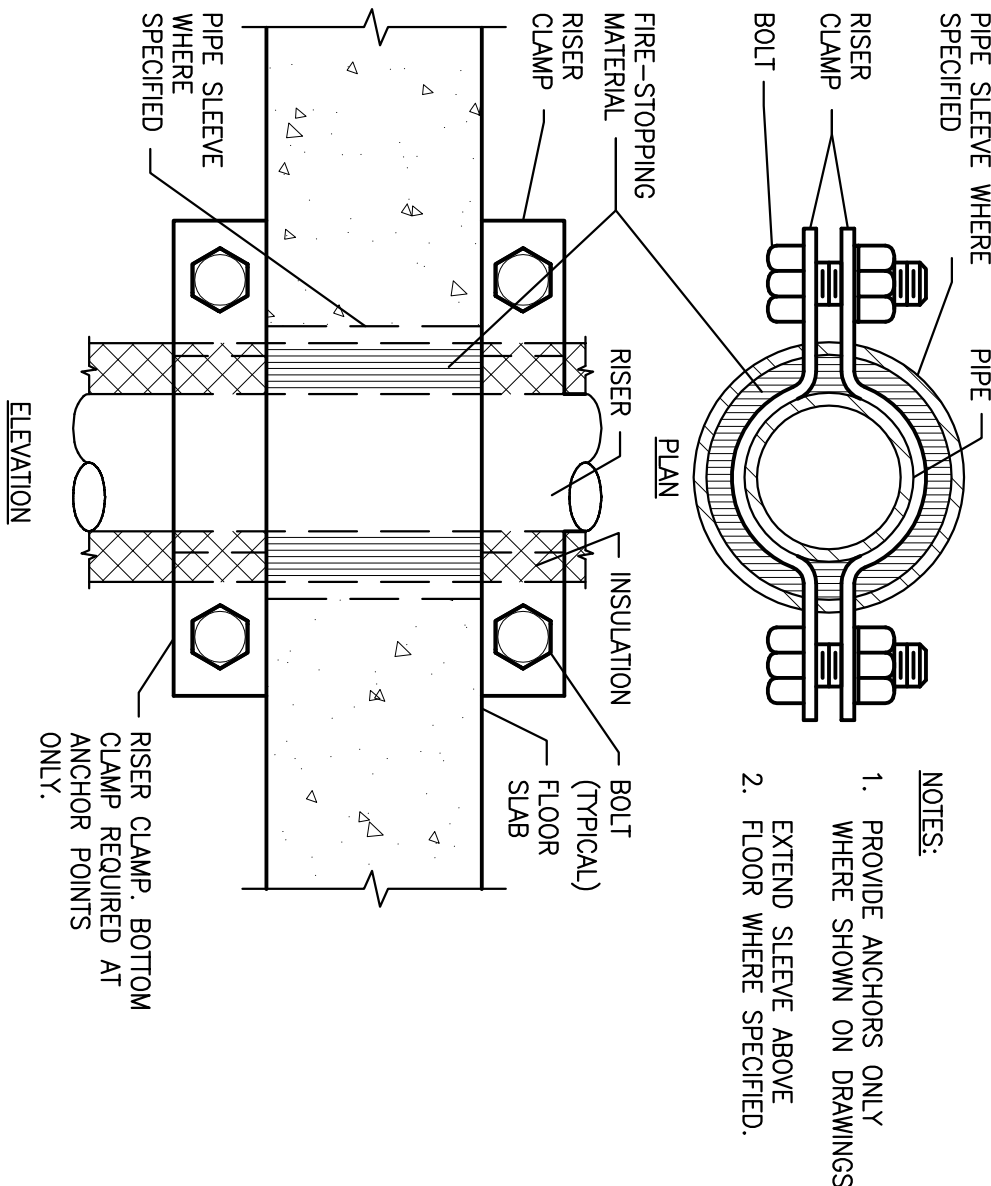
ROOF DRAIN AND OVERFLOW DRAIN DETAIL

N.T.S.



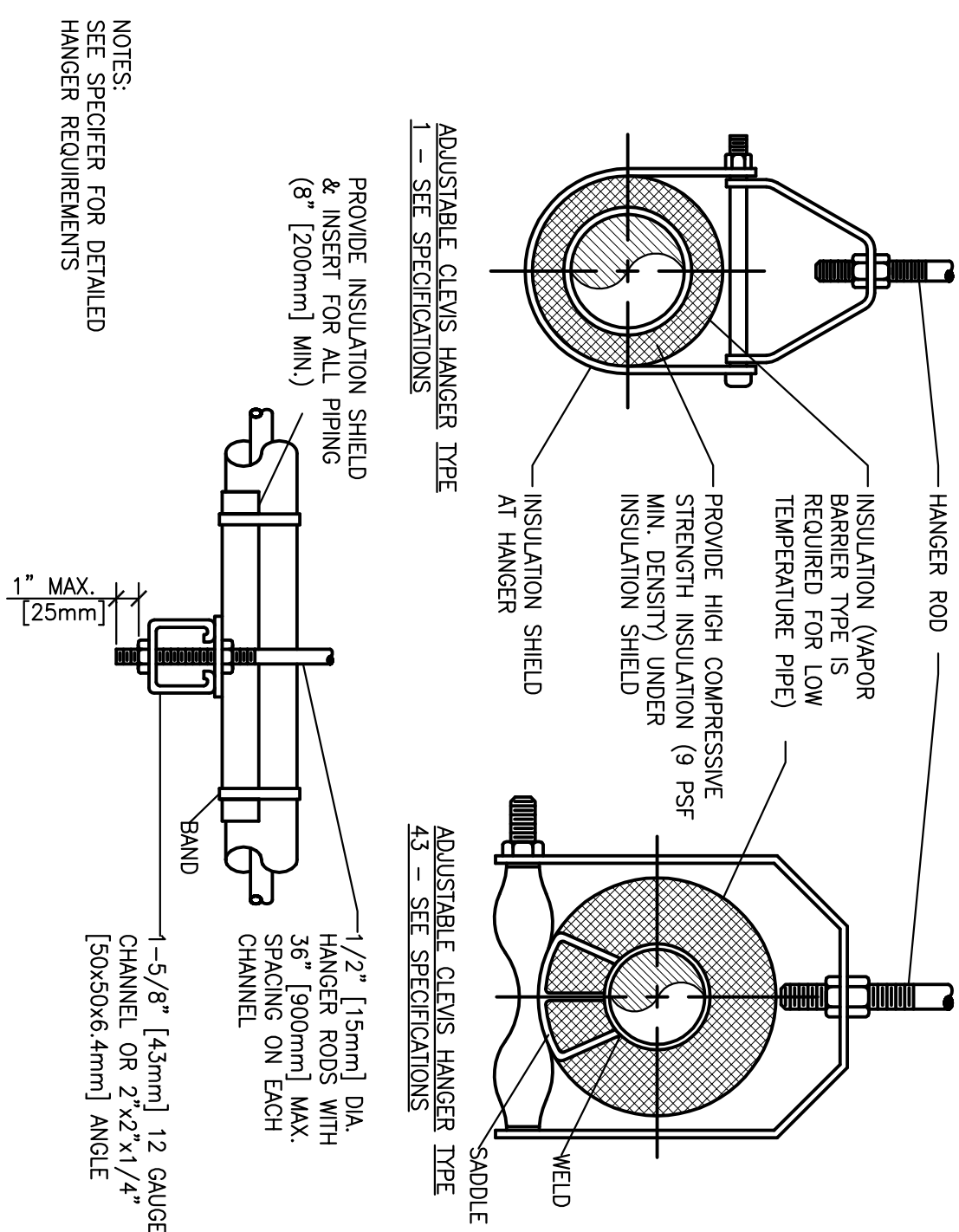
TYPE "C" FLOOR DRAIN DETAIL

N.T.S.



SUPPORT/ANCHOR FOR PIPE RISERS

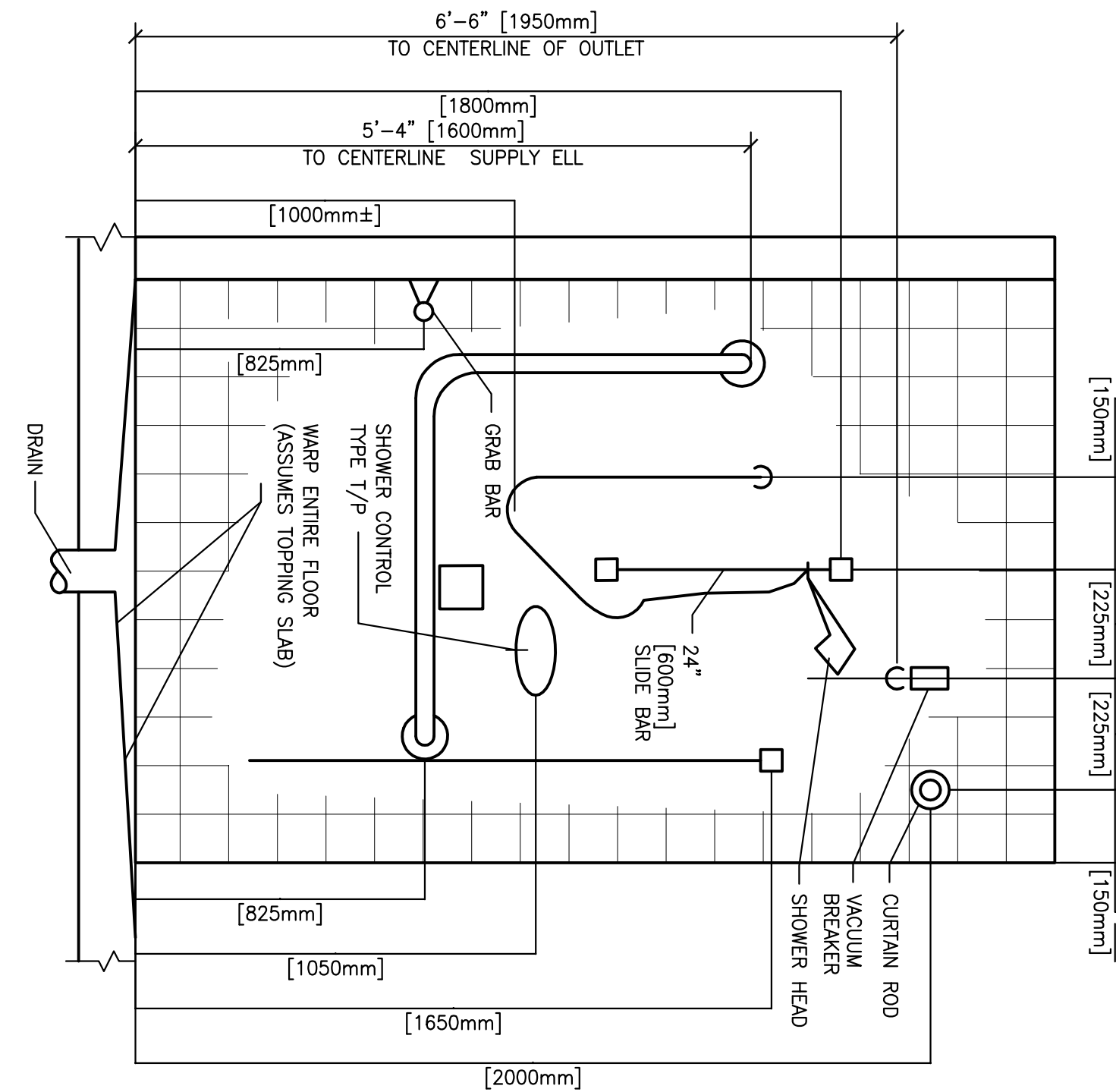
N.T.S.



PIPE HANGERS

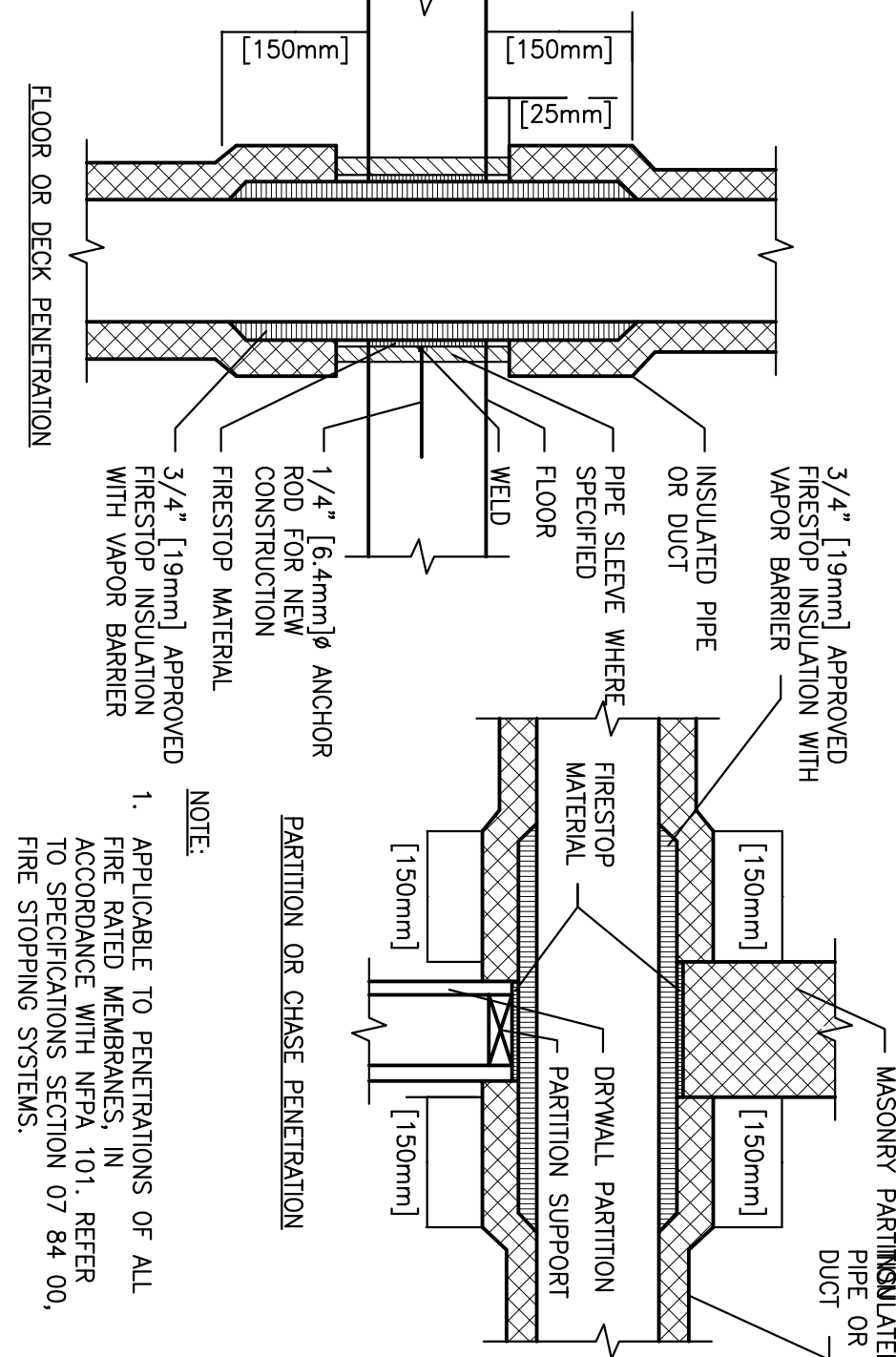
N.T.S.

| NOM. SIZE | IN. | MAXIMUM PIPE/TUBING SUPPORT SPACING | | | | | | | | | | | |
|-----------|--------|-------------------------------------|------|------|-----|--------|--------|-----|--------|-----|-----|-----|-----|
| | | 1/4" | 1/2" | 3/4" | 1" | 1 1/4" | 1 1/2" | 2" | 2 1/2" | 3" | 4" | 5" | 6" |
| 1/4" | 1/4" | 120 | 120 | 120 | 120 | 120 | 120 | 120 | 120 | 120 | 120 | 120 | 120 |
| 1/2" | 1/2" | 120 | 120 | 120 | 120 | 120 | 120 | 120 | 120 | 120 | 120 | 120 | 120 |
| 3/4" | 3/4" | 120 | 120 | 120 | 120 | 120 | 120 | 120 | 120 | 120 | 120 | 120 | 120 |
| 1" | 1" | 120 | 120 | 120 | 120 | 120 | 120 | 120 | 120 | 120 | 120 | 120 | 120 |
| 1 1/4" | 1 1/4" | 120 | 120 | 120 | 120 | 120 | 120 | 120 | 120 | 120 | 120 | 120 | 120 |
| 1 1/2" | 1 1/2" | 120 | 120 | 120 | 120 | 120 | 120 | 120 | 120 | 120 | 120 | 120 | 120 |
| 2" | 2" | 120 | 120 | 120 | 120 | 120 | 120 | 120 | 120 | 120 | 120 | 120 | 120 |
| 2 1/2" | 2 1/2" | 120 | 120 | 120 | 120 | 120 | 120 | 120 | 120 | 120 | 120 | 120 | 120 |
| 3" | 3" | 120 | 120 | 120 | 120 | 120 | 120 | 120 | 120 | 120 | 120 | 120 | 120 |
| 4" | 4" | 120 | 120 | 120 | 120 | 120 | 120 | 120 | 120 | 120 | 120 | 120 | 120 |
| 5" | 5" | 120 | 120 | 120 | 120 | 120 | 120 | 120 | 120 | 120 | 120 | 120 | 120 |
| 6" | 6" | 120 | 120 | 120 | 120 | 120 | 120 | 120 | 120 | 120 | 120 | 120 | 120 |
| 8" | 8" | 120 | 120 | 120 | 120 | 120 | 120 | 120 | 120 | 120 | 120 | 120 | 120 |
| 10" | 10" | 120 | 120 | 120 | 120 | 120 | 120 | 120 | 120 | 120 | 120 | 120 | 120 |
| 12" | 12" | 120 | 120 | 120 | 120 | 120 | 120 | 120 | 120 | 120 | 120 | 120 | 120 |
| 14" | 14" | 120 | 120 | 120 | 120 | 120 | 120 | 120 | 120 | 120 | 120 | 120 | 120 |
| 16" | 16" | 120 | 120 | 120 | 120 | 120 | 120 | 120 | 120 | 120 | 120 | 120 | 120 |
| 18" | 18" | 120 | 120 | 120 | 120 | 120 | 120 | 120 | 120 | 120 | 120 | 120 | 120 |
| 20" | 20" | 120 | 120 | 120 | 120 | 120 | 120 | 120 | 120 | 120 | 120 | 120 | 120 |
| 24" | 24" | 120 | 120 | 120 | 120 | 120 | 120 | 120 | 120 | 120 | 120 | 120 | 120 |



P-701 PATIENT SHOWER

N.T.S.



PIPE/DUCT PENETRATION OF SMOKE/FIRE BARRIERS

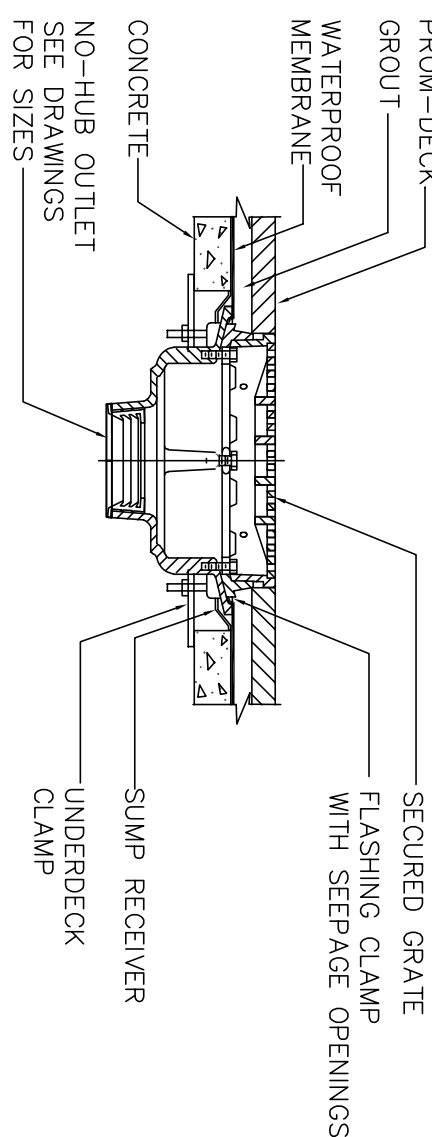
N.T.S.

- PLUMBING PIPING SYMBOLS
- DOMESTIC COLD WATER, COLD WATER
 - DOMESTIC HOT WATER, HOT WATER
 - DOMESTIC HOT WATER RETURN, HOT WATER RETURN
 - SANITARY OR WASTE PIPING ABOVE GRADE
 - SANITARY SEWER (OPTIONAL)
 - SANITARY SEWER, BELOW GRADE
 - VENT PIPING
 - STORM WATER ABOVE GRADE
 - STORM WATER, BELOW GRADE

PLUMBING VALVE SYMBOLS

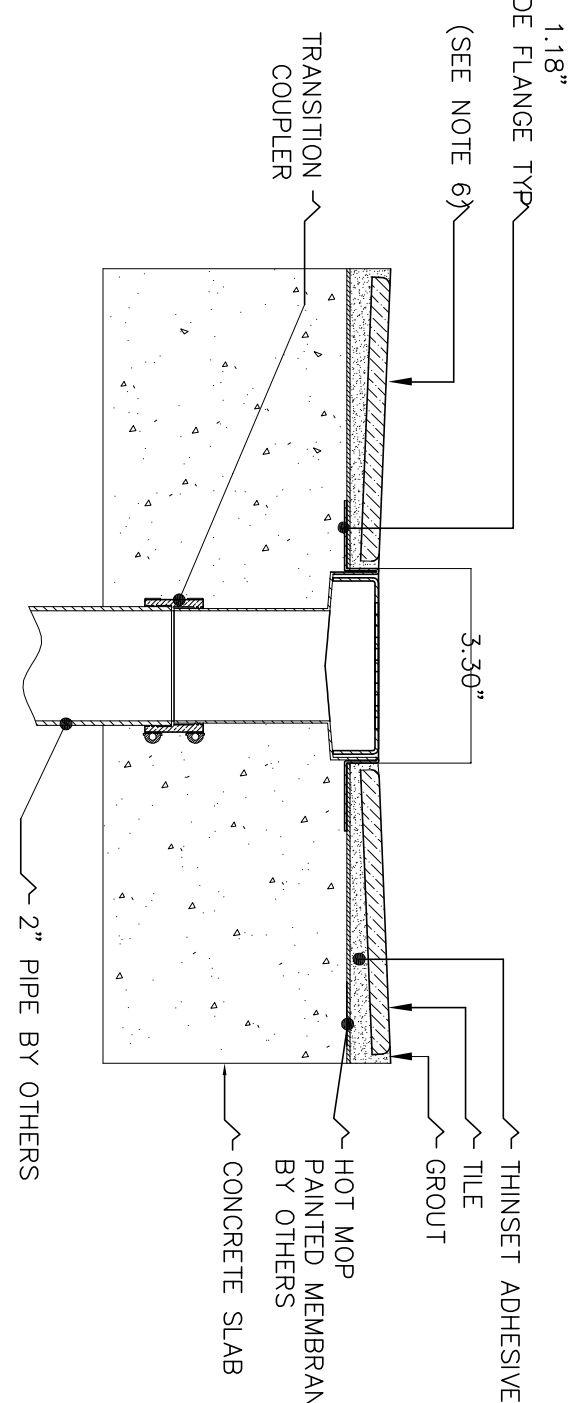
- GATE VALVE
- GLOBE VALVE
- GATE VALVE WITH 3/4" * HOSE ADAPTER
- CHECK VALVE
- ANGLE GLOBE VALVE
- BUTTERFLY VALVE
- BALL VALVE
- MODULATING CONTROL VALVE
- TWO POSITION CONTROL VALVE
- THREE-WAY MODULATING CONTROL VALVE
- THREE-WAY TWO POSITION CONTROL VALVE
- PRESSURE REGULATING VALVE
- AUTOMATIC FLOW CONTROL VALVE
- PRESSURE RELIEF VALVE
- MANUAL AIR VENT
- TEST PLUG (PRESSURE/TEMPERATURE)
- AUTOMATIC AIR VENT

- GENERAL PLUMBING SYMBOLS
- DIRECTION OF PIPE FLOW (DOWN)
 - DIRECTION OF FLOW
 - ANCHOR
 - REDUCER OR INCREASER
 - ECCENTRIC REDUCER
 - TOP CONNECTION, 45° OR 90°
 - BOTTOM CONNECTION, 45° OR 90°
 - SIDE CONNECTION
 - CAPPED OUTLET
 - RISE OR DROP IN PIPE
 - UNION
 - PIPE UP
 - PIPE DOWN
 - POINT OF CONNECTION BETWEEN NEW AND EXISTING WORK
 - STRAINER
 - THERMOMETER
 - PRESSURE GAGE



PROMENADE DRAIN DETAIL

N.T.S.



SHOWER TRENCH DRAIN DETAIL

N.T.S.