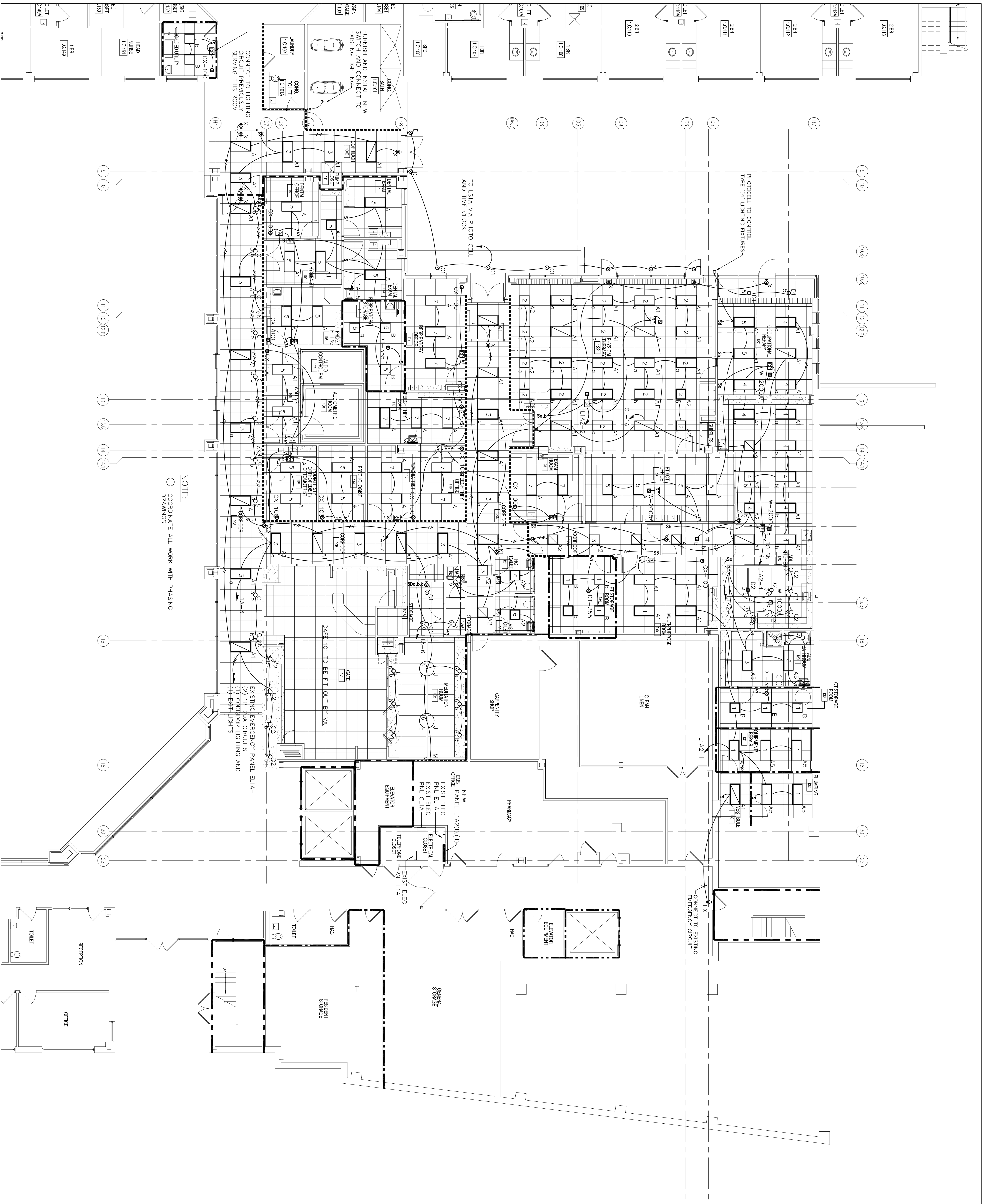
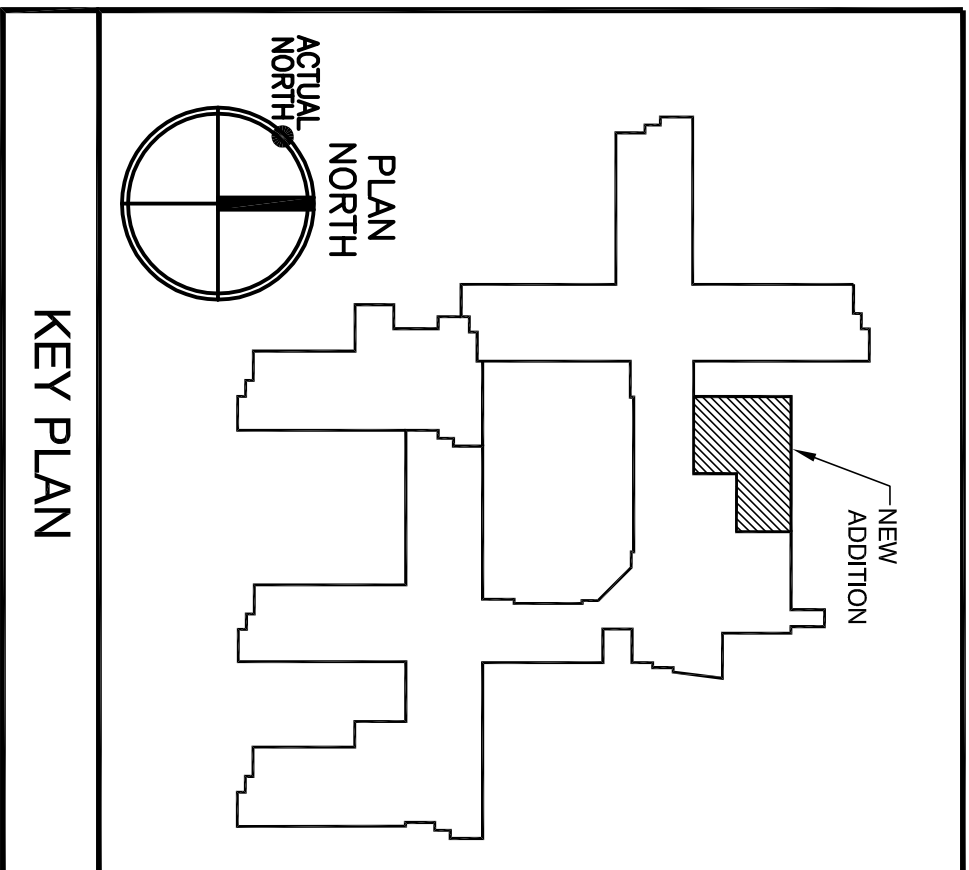


PARTITION LEGEND	
.....	SMOKE PARTITION - PREVENT THE PASSAGE OF SMOKE
-----	SMOKE BARRIER - 1 HR RATING
-----	2 HR RATED PARTITION
-----	1 HR RATED PARTITION



1ST FLOOR PLAN  
1/8" = 1'-0"



Revisions		Date	
<div><div><div><div></div><div></div><div></div></div><div><div></div><div></div><div></div></div></div><div><div>Department of Veterans Affairs</div><div>New Jersey Health Care System</div><div>151 Knollcroft Road</div><div>Lyons, New Jersey 07939</div></div></div>			
<div><div><div></div><div></div><div></div></div><div><div></div><div></div><div></div></div></div> <div><div>Department of Veterans Affairs</div><div>New Jersey Health Care System</div><div>151 Knollcroft Road</div><div>Lyons, New Jersey 07939</div></div>		<div><div><div></div><div></div><div></div></div><div><div></div><div></div><div></div></div></div> <div><div>Architecture</div><div>Planning</div><div>Interiors</div></div> <div>982 Cherry Street</div> <div>Phila., PA 19107</div> <div>(215) 625-2900</div>	
<div><div><div></div><div></div><div></div></div><div><div></div><div></div><div></div></div></div> <div><div>Philis &amp; Bange Associates, LLC</div><div>4220 Main Street</div><div>Philadelphia, PA 19127</div><div>T: (215) 908-9000</div><div>F: (215) 908-9000</div></div>		<div><div><div></div><div></div><div></div></div><div><div></div><div></div><div></div></div></div> <div><div>The Karpale Group</div><div>1218 Chestnut Street</div><div>Philadelphia, PA 19107</div><div>T: (215) 288-1994</div><div>F: (215) 288-8950</div></div>	
<div><div><div></div><div></div><div></div></div><div><div></div><div></div><div></div></div></div> <div><div>CONSULTING ENGINEERS</div><div>241 WINDSOR DRIVE</div><div>BRIMWOOD PARK, NJ 07007</div><div>MAILING: 1201 JPS CENTER</div><div>Engineer NJ NO 28943</div></div>		<div><div><div></div><div></div><div></div></div><div><div></div><div></div><div></div></div></div> <div><div>Approved Chief Executive Officer</div><div>Checked</div><div>JA</div><div>Location</div><div>LYONS, NJ</div><div>Dwg</div><div>OF</div></div>	
Drawing Title		Project Title	
ELECTRICAL: FIRST FLOOR - LIGHTING		CLC SUPPORT SPACES VAMC - LYONS	
Approved Chief Facilities Engineering Serv.		Drawn SMR	
Approved Chief Executive Officer		Building Number 135	
		Contact Number 561-OSI-136	
Date 2/05/13		Project No. 1009	
Date 4/19/13		Date E-4	
VETERANS ADMINISTRATION			