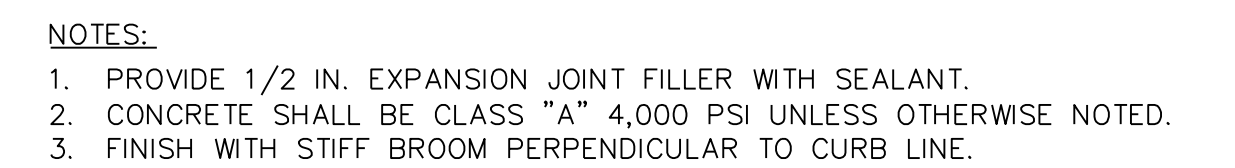
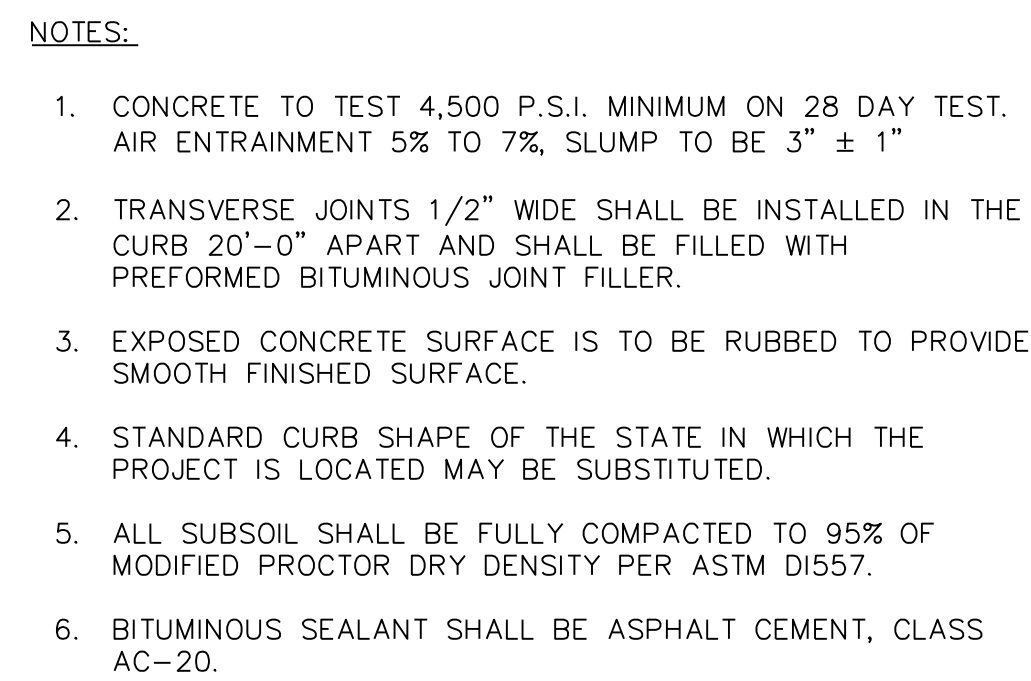
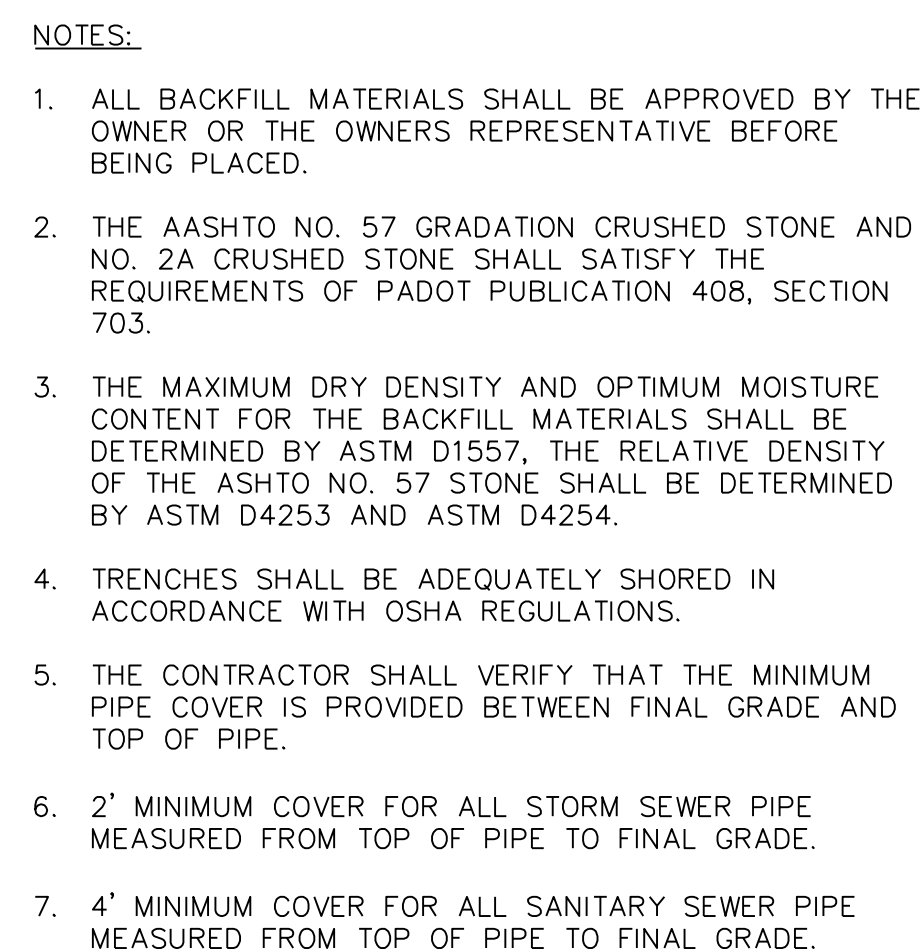


## 2. CLEANOUT

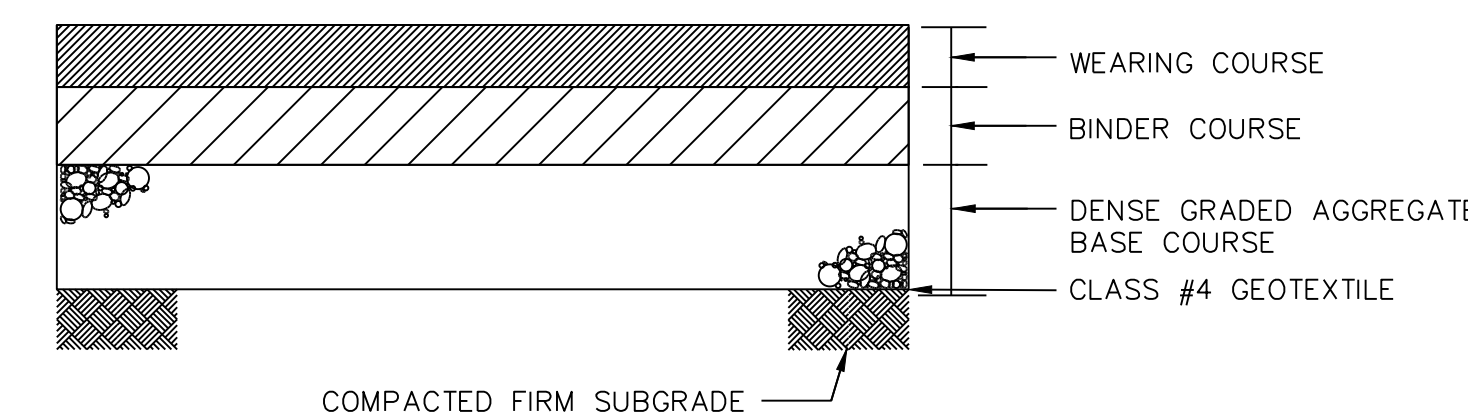
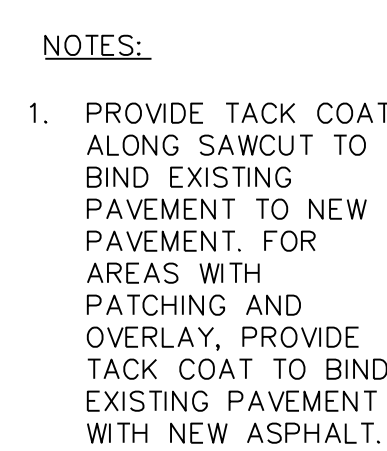
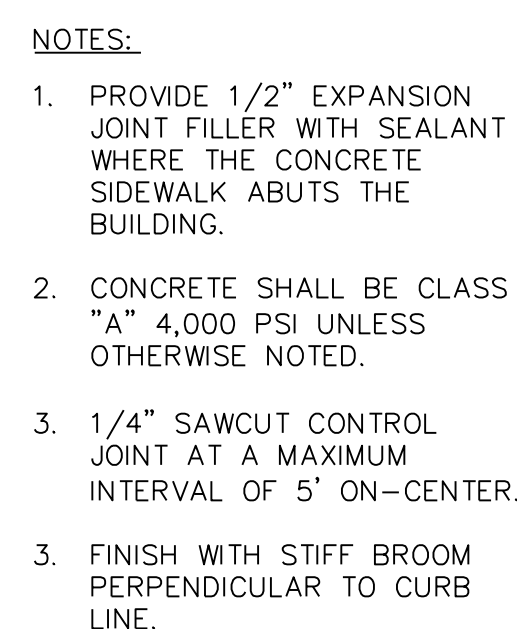
### 3. WATERLINE TRENCH AND BEDDING



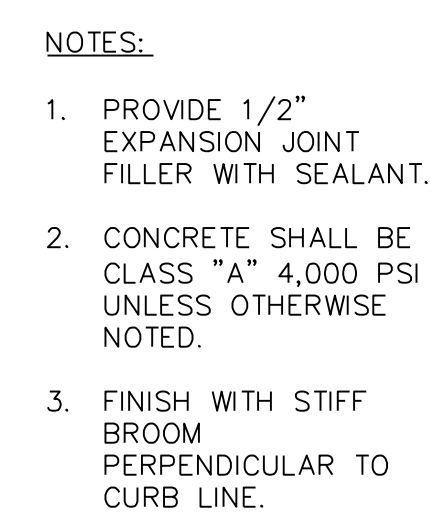
## 5. CONCRETE CURB AND GUTTER

## 6. CONCRETE ENCASEMENT

## 7. HEAVY DUTY CONCRETE PAVEMENT



## 9. PAVEMENT SAWCUT



PENNDOT FORM 408 SPECIFICATION	ITEM	LIGHT DUTY PAVEMENT SECTION
SECTION 409, TYPE: 1.5 mm SUPERPAVE MIX	BITUMINOUS CONCRETE WEARING COURSE	1.5 IN.
SECTION 409, TYPE: 25 mm SUPERPAVE MIX	BITUMINOUS CONCRETE BINDER COURSE	4.5 IN.
SECTION 703, 2A COARSE AGGREGATE	AGGREGATE BASE COURSE	8.0 IN.

## 11. ASPHALT PAVEMENT SECTION

BID DOCUMENTS - NOT FOR CONSTRUCTION  
FULLY SPRINKLERED

[illegible]

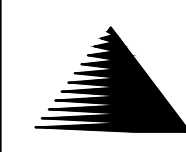
CONSULTANTS:

SITE/CML:

SCOTT ROWLAND, P.E.  
LANGAN ENGINEERING AND  
ENVIRONMENTAL SERVICES  
PROFESSIONAL ENGINEER  
PA LICENCE NO. PE-080563

SIGNATURE: \_\_\_\_\_

ARCHITECT/ENGINEERS:



**Miller-Remick LLC**  
M.E.P. & Structural Engineering  
A Veteran Owned Small Business  
1010 KINGS HIGHWAY SOUTH  
BUILDING ONE - 1st FLOOR  
CHERRY HILL, NEW JERSEY 08034  
PHONE: (856)429-4000  
FAX: (856)429-5002



601 Technology Drive, Suite 200  
Canonsburg, PA 15317-9540  
P: 724.514.5100 F: 724.514.5101  
[www.langan.com](http://www.langan.com)

NEW JERSEY PENNSYLVANIA NEW YORK CONNECTICUT FLORIDA  
NEVADA VIRGINIA CALIFORNIA

	Drawing Title
--	---------------

## DETAILS

Approved: Project Director

	Project Title
--	---------------

AE - UNIVERSITY DRIVE  
RESEARCH BUILDING ADDITION

	Location

VA HEA

Date	05/03/2013
------	------------

Project Number

VA244-P-1749

Building Number

Revised	
Drawing Number	

01 501

GI-501  
Page 11 of 166

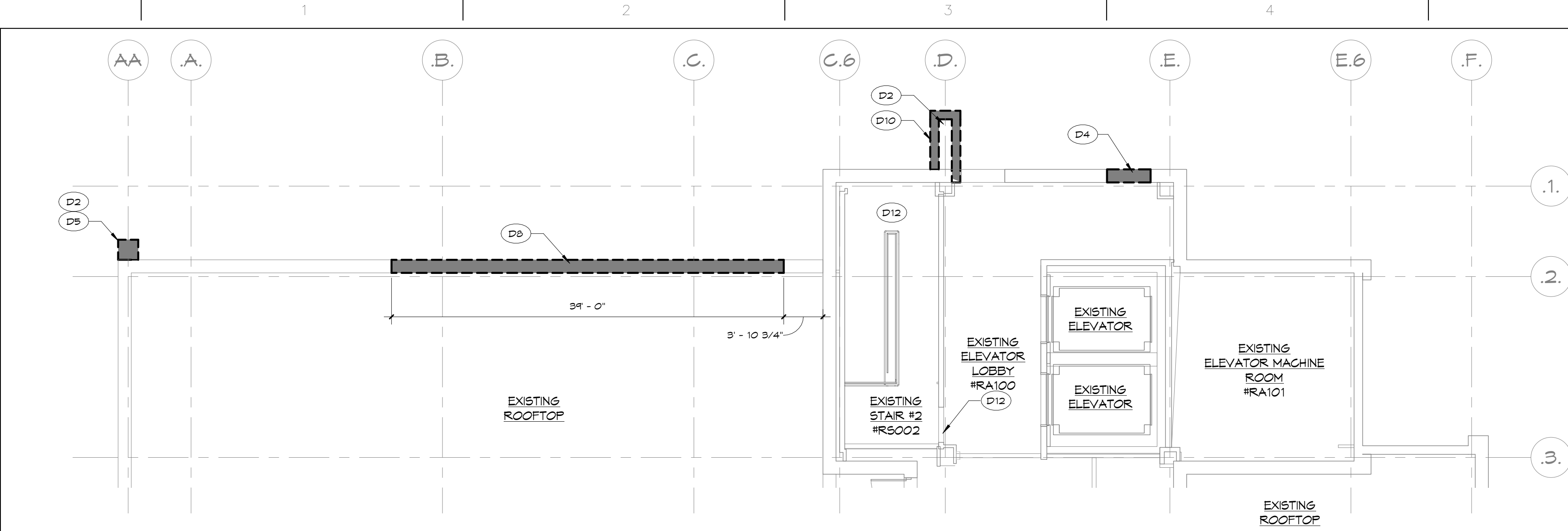
Office of  
Construction  
and Facilities  
Management



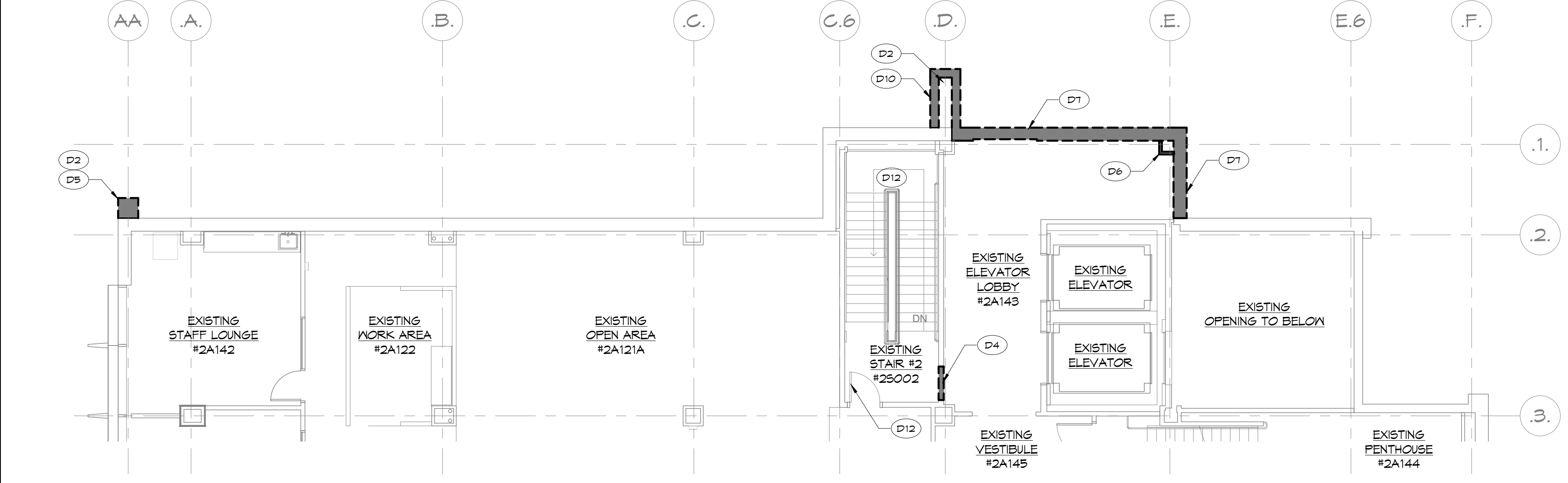




one eighth inch = one foot  
one quarter inch = one foot  
three eighths inch = one foot  
one half inch = one foot  
three quarters inch = one foot  
one inch = one foot  
one and one half inches = one foot  
two inches = one foot  
three inches = one foot  
four inches = one foot  
five inches = one foot  
six inches = one foot  
seven inches = one foot  
eight inches = one foot  
nine inches = one foot  
ten inches = one foot  
eleven inches = one foot  
twelve inches = one foot  
thirteen inches = one foot  
fourteen inches = one foot  
fifteen inches = one foot  
sixteen inches = one foot  
seventeen inches = one foot  
eighteen inches = one foot  
nineteen inches = one foot  
twenty inches = one foot  
twenty one inches = one foot  
twenty two inches = one foot  
twenty three inches = one foot  
twenty four inches = one foot  
twenty five inches = one foot  
twenty six inches = one foot  
twenty seven inches = one foot  
twenty eight inches = one foot  
twenty nine inches = one foot  
thirty inches = one foot  
thirty one inches = one foot  
thirty two inches = one foot  
thirty three inches = one foot  
thirty four inches = one foot  
thirty five inches = one foot  
thirty six inches = one foot  
thirty seven inches = one foot  
thirty eight inches = one foot  
thirty nine inches = one foot  
forty inches = one foot  
forty one inches = one foot  
forty two inches = one foot  
forty three inches = one foot  
forty four inches = one foot  
forty five inches = one foot  
forty six inches = one foot  
forty seven inches = one foot  
forty eight inches = one foot  
forty nine inches = one foot  
fifty inches = one foot  
fifty one inches = one foot  
fifty two inches = one foot  
fifty three inches = one foot  
fifty four inches = one foot  
fifty five inches = one foot  
fifty six inches = one foot  
fifty seven inches = one foot  
fifty eight inches = one foot  
fifty nine inches = one foot  
sixty inches = one foot  
sixty one inches = one foot  
sixty two inches = one foot  
sixty three inches = one foot  
sixty four inches = one foot  
sixty five inches = one foot  
sixty six inches = one foot  
sixty seven inches = one foot  
sixty eight inches = one foot  
sixty nine inches = one foot  
seventy inches = one foot  
seventy one inches = one foot  
seventy two inches = one foot  
seventy three inches = one foot  
seventy four inches = one foot  
seventy five inches = one foot  
seventy six inches = one foot  
seventy seven inches = one foot  
seventy eight inches = one foot  
seventy nine inches = one foot  
eighty inches = one foot  
eighty one inches = one foot  
eighty two inches = one foot  
eighty three inches = one foot  
eighty four inches = one foot  
eighty five inches = one foot  
eighty six inches = one foot  
eighty seven inches = one foot  
eighty eight inches = one foot  
eighty nine inches = one foot  
ninety inches = one foot  
ninety one inches = one foot  
ninety two inches = one foot  
ninety three inches = one foot  
ninety four inches = one foot  
ninety five inches = one foot  
ninety six inches = one foot  
ninety seven inches = one foot  
ninety eight inches = one foot  
ninety nine inches = one foot  
one hundred inches = one foot



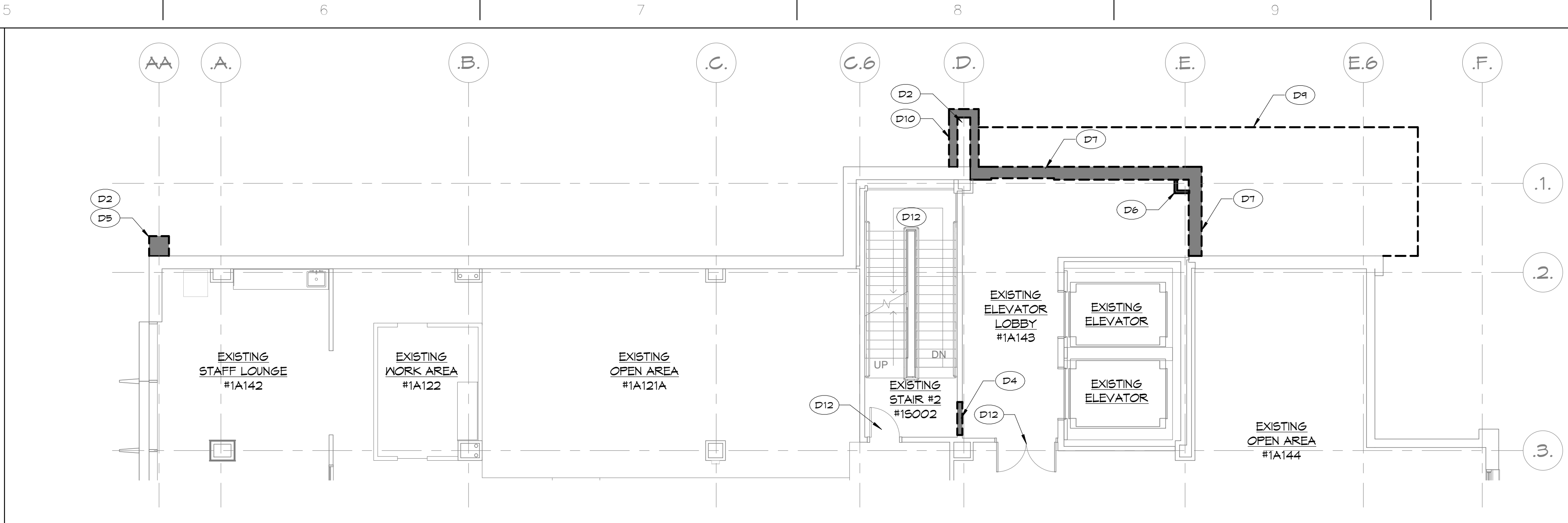
1/8" = 1'-0"  
4 ROOF LEVEL DEMOLITION PLAN



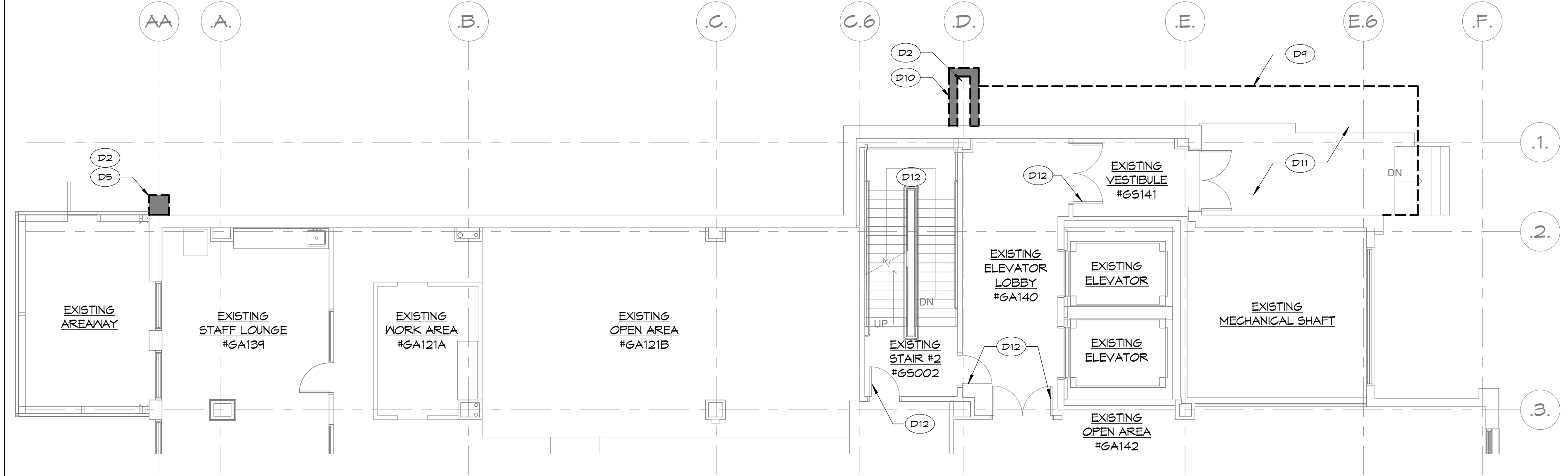
1/8" = 1'-0"  
5 2ND LEVEL DEMOLITION PLAN

- ### DEMOLITION NOTES
- DO NOT CONSIDER DEMOLITION AND ALTERATION NOTES TO BE ALL-INCLUSIVE. IT IS THE CONTRACTOR'S RESPONSIBILITY TO INSPECT AND ASSESS EACH SPACE AND TO FULFILL THE INTENT OF THE WORK INDICATED BY THE CONTRACT DOCUMENTS. VERIFY EXTENT OF ALL DEMOLITION WITHIN THE CONTRACT LIMITS. BRING DEVIATIONS FROM THE CONTRACT DOCUMENTS NECESSITATED BY FIELD CONDITIONS TO THE ATTENTION OF THE ARCHITECT. THE EXTENT OF DEMOLITION AND REMOVAL WORK IS SHOWN ON THE DRAWINGS AND INCLUDES, BUT IS NOT NECESSARILY LIMITED TO, THE FOLLOWING ITEMS LISTED BELOW.
  - REMOVE EXISTING PARTITIONS, CEILING, DOORS, WINDOWS, PLUMBING FIXTURES, MECHANICAL SYSTEMS, LIGHTING FIXTURES, AND RELATED WORK AS INDICATED ON DRAWINGS AND AS REQUIRED FOR NEW WORK.
  - IN ALL AREAS SCHEDULED TO RECEIVE NEW FLOOR FINISHES, REMOVE ALL FLOORING MATERIALS DOWN TO EXISTING SLAB WHERE REQUIRED. ANY AREA OF EXISTING FLOORING THAT IS SECURELY ATTACHED, CAN REMAIN PER NEW FLOORING MANUFACTURER'S ACCEPTANCE.
  - CAP OFF AND RELOCATE UTILITIES AS REQUIRED TO MAINTAIN EXISTING SERVICES AND SYSTEMS. COMPLY WITH APPLICABLE CODES AND REGULATIONS.
  - DISPOSAL OF MATERIALS: REMOVE ALL DEBRIS, TRASH AND NON-SALVAGEABLE ITEMS FROM SITE IN MANNER ACCEPTABLE TO OWNER; DISPOSE OF OFF-SITE IN LEGAL MANNER.
  - REMOVE EXISTING BASES WHERE THEY INTERFERE WITH CASEWORK INSTALLATION.
  - WHERE EXISTING CEILING ARE SCHEDULED TO REMAIN, REMOVE EXISTING CEILING ONLY TO EXTENT SHOWN OR REQUIRED TO ACCOMMODATE HVAC, PLUMBING, ELECTRICAL, OR OTHER WORK. REMOVE SUSPENDED ACOUSTIC TILE CEILING AS INDICATED. REPAIR ANY DAMAGE TO CEILING CAUSED BY NEW WORK.
  - CONTRACTOR SHALL OBTAIN ALL PERMITS REQUIRED BY LOCAL AUTHORITY HAVING JURISDICTION.
  - IN ALL AREAS SCHEDULED TO RECEIVE NEW FINISHES, REMOVE EXISTING APPLIED FINISHES, BUMPER GUARDS, HANDRAILS, APPLIED BASE, ETC.
  - REFER TO ELECTRICAL, MECHANICAL AND PLUMBING DRAWINGS FOR ADDITIONAL DEMOLITION WORK. WHERE SUCH WORK OCCURS, ARCHITECTURAL ITEMS AND FINISHES SHALL BE REMOVED ONLY TO THE EXTENT REQUIRED.
  - CONTRACTOR IS TO PROVIDE ALL NECESSARY SHORING AND BRACING TO SUPPORT EXISTING STRUCTURE UNTIL PERMANENT SUPPORTS ARE ERECTED. TAKE ALL NECESSARY MEASURES TO PREVENT COLLAPSE OF WALLS, SLABS, ETC.
  - CONSTRUCTION TO REMAIN SHALL BE FULLY PROTECTED FROM DAMAGE. THE CONTRACTOR SHALL ASSUME FULL RESPONSIBILITY FOR DAMAGE AND SHALL MAKE REPAIRS REQUIRED WITHOUT ADDITIONAL COST TO THE OWNER.
  - NOTIFY THE ARCHITECT IF UNDOCUMENTED STRUCTURAL MEMBERS ARE UNCOVERED DURING THE COURSE OF DEMOLITION. KEEP ARCHITECT NOTIFIED OF PROGRESS.
  - CONTRACTOR IS TO COORDINATE ALL INDICATED DEMOLITION WITH NEW CONSTRUCTION TO INSURE PROPER LOCATION AND DIMENSION OF DEMOLISHED AREAS. INFORM ARCHITECT OF ANY DISCREPANCIES.
  - INCLUDED IN SCOPE IS ANY WORK REQUIRED TO BE DONE ON FLOORS ABOVE OR BELOW DEMOLITION AREAS, INCLUDING BUT NOT LIMITED TO ACCESSING OR REROUTING UTILITIES. EXISTING CONDITIONS TO REMAIN ARE TO BE PROTECTED FROM DAMAGE.
  - CONTRACTOR IS RESPONSIBLE FOR CUTTING OPENINGS IN EXISTING WALLS. SEE PLANS AND DETAILS ON ARCHITECTURAL/STRUCTURAL DRAWINGS FOR LOCATIONS OF OPENINGS WHICH REQUIRE STRUCTURAL SUPPORT. PROVIDE PROPER SHORING WHERE NECESSARY.
  - ALL HVAC, ELECTRICAL AND PLUMBING EQUIPMENT UNCOVERED DURING THE COURSE OF DEMOLITION THAT IS NOT INDICATED TO BE TIED INTO NEW CONSTRUCTION OR TO BE RELOCATED IS TO BE CAPPED OFF, COVERED, AND LOCATION NOTED FOR FUTURE USE.
  - REMOVE EXISTING STL. COLUMN. REFER TO STRUCTURAL DRAWINGS FOR ADDITIONAL INFORMATION AND DETAILS.
  - REMOVE PORTION OF EXISTING FOUNDATION WALL CONSTRUCTION FROM T.O.S. AT BASEMENT LEVEL TO UNDERSIDE OF STRUCTURAL STEEL AT 1ST LEVEL. REFER TO STRUCTURAL DRAWINGS FOR ADDITIONAL INFORMATION & DETAILS.
  - REMOVE PORTION OF EXISTING WALL FOR NEW OPENING. REFER TO FLOOR PLANS FOR DIMENSIONS.
  - WHERE APPLICABLE, DAMAGED CEILING TILES ARE TO BE REMOVED AND REPLACED. WHERE NEW CEILING CONSTRUCTION IS INDICATED, REMOVE EXISTING FLUORESCENT LIGHTING FIXTURES WITHOUT DAMAGE THERETO, AND SAVE FOR USE AS DIRECTED BY OWNER. ANY DISPOSAL OF SAME TO BE IN COMPLIANCE WITH ALL APPLICABLE LOCAL, STATE AND FEDERAL REGULATIONS.
  - EXISTING WALL FINISHES TO REMAIN INTACT, EXCEPT AS OTHERWISE NOTED. WHERE DAMAGE IS INCURRED, OR PATCHING IS REQUIRED DUE TO DEMOLITION, PROVIDE NEW FINISH TO MATCH EXISTING SURFACE, FLUSH WITH EXISTING.
  - AT WALL SURFACES SCHEDULED FOR PARTIAL DEMOLITION, REMOVE VINYL BASE, BUMPER GUARDS, HANDRAILS, ETC. ONLY TO THE EXTENT REQUIRED TO ACCOMMODATE DEMOLITION. ALTER AS REQUIRED AND RE-INSTALL TERMINATION TRIM AND ENDCAPS AS REQUIRED.
  - ALL DEMOLITION WORK SHALL BE PERFORMED IN ACCORDANCE WITH ALL APPLICABLE LOCAL ORDINANCES AND BUILDING CODES.
  - OWNER IS RESPONSIBLE FOR INSPECTION, REMEDIATION, AND DISPOSAL OF ALL HAZARDOUS MATERIALS.
  - RENOVATION AREAS SHALL BE ISOLATED FROM OCCUPIED AREAS DURING CONSTRUCTION USING TEMPORARY WALLS, AS IN DETAIL. BELOW AND EXHAUST AIRFLOW SHALL BE SUFFICIENT TO MAINTAIN NEGATIVE PRESSURE IN THE CONSTRUCTION ZONE.
  - EXISTING AIR QUALITY REQUIREMENTS AND OTHER UTILITY REQUIREMENTS FOR OCCUPIED AREAS SHALL BE MAINTAINED.
  - MAINTAIN INTEGRITY OF ALL EXISTING FIRE PROOFING ON ALL STRUCTURAL BEAMS, COLUMNS AND PENETRATIONS. REPAIR AS REQUIRED WHEN DAMAGED IN COURSE OF WORK.

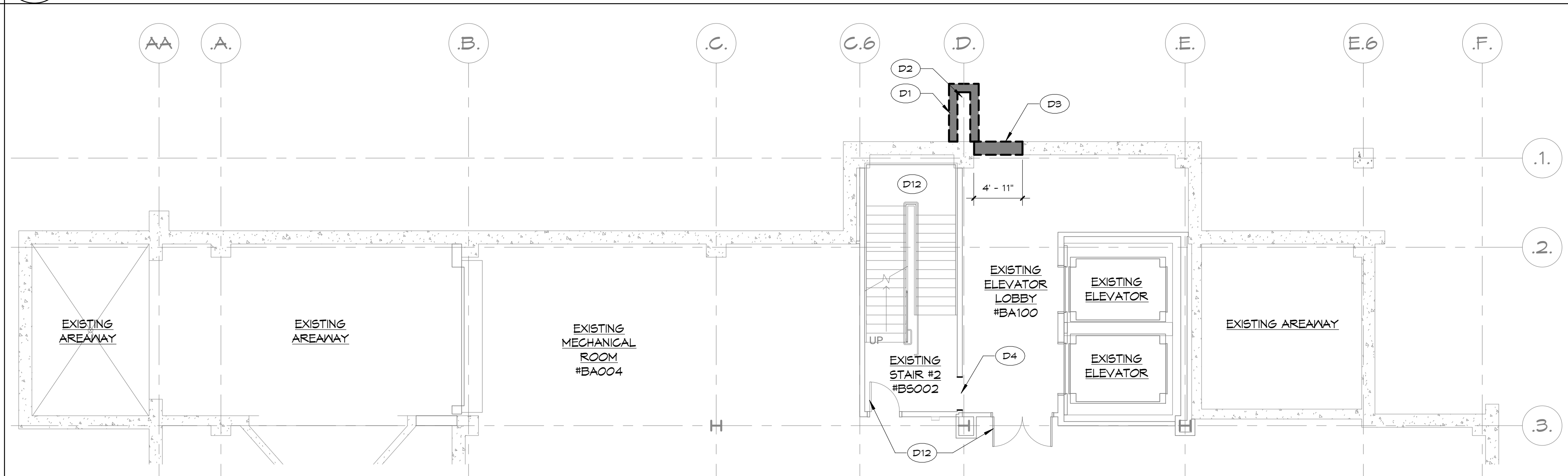
DEMOLITION KEY NOTES - D1	
KEYNOTE #	DESCRIPTION
D1	REMOVE EXISTING FOUNDATION FOR METAL PANEL WALL ABOVE. REFER TO STRUCTURAL DRAWINGS FOR ADDITIONAL INFORMATION AND DETAILS.
D2	REMOVE EXISTING STL. COLUMN. REFER TO STRUCTURAL DRAWINGS FOR ADDITIONAL INFORMATION AND DETAILS.
D3	REMOVE PORTION OF EXISTING FOUNDATION WALL CONSTRUCTION FROM T.O.S. AT BASEMENT LEVEL TO UNDERSIDE OF STRUCTURAL STEEL AT 1ST LEVEL. REFER TO STRUCTURAL DRAWINGS FOR ADDITIONAL INFORMATION & DETAILS.
D4	REMOVE PORTION OF EXISTING WALL FOR NEW OPENING. REFER TO FLOOR PLANS FOR DIMENSIONS.
D5	REMOVE EXISTING MASONRY & MTL. STUD PIER TO ALIGN WITH FINISH FACE OF EXISTING BUILDING. PATCH OPENING TO MATCH EXISTING EXTERIOR WALL. & PREPARE AREA FOR NEW WORK.
D6	REMOVE EXISTING WALLS AND PREPARE AREA FOR NEW WORK.
D7	REMOVE EXISTING MASONRY EXTERIOR WALL CONSTRUCTION FROM T.O.S. AT 1ST LEVEL TO UNDERSIDE OF STRUCTURAL STEEL AT 2ND LEVEL. REMOVE EXISTING FIRE STOPPING AT FLOOR SLABS AND PREPARE AREA FOR NEW WORK.
D8	REMOVE PORTION OF EXISTING ROOF PARAPET AND UNDERLYING STRUCTURE. REFER TO ARCHITECTURAL DETAILS FOR ADDITIONAL INFORMATION.
D9	LINE OF EXISTING CANOPY TO BE REMOVED. REMOVE CANOPY AND ASSOCIATE STRUCTURE. REFER TO STRUCTURAL DRAWINGS FOR ADDITIONAL INFORMATION AND DETAILS. PATCH OPENING TO MATCH EXISTING EXTERIOR WALL. & PREPARE AREA FOR NEW WORK.
D10	REMOVE EXISTING METAL PANEL WALL & MTL. STUD PIER. PATCH OPENING TO MATCH EXISTING EXTERIOR WALL. & PREPARE AREA FOR NEW WORK.
D11	EXISTING SITE WORK TO BE REMOVED & RECONSTRUCTED AS REQUIRED IN ORDER TO INSTALL NEW CONSTRUCTION. REFER TO CIVIL DOCUMENTS FOR ADDITIONAL INFORMATION & DETAIL.
D12	MAINTAIN EXISTING EGRESS THROUGHT THE DURATION OF THE PROJECT.



1/8" = 1'-0"  
1 1ST LEVEL DEMOLITION PLAN



1/8" = 1'-0"  
2 GROUND LEVEL DEMOLITION PLAN



1/8" = 1'-0"  
3 BASEMENT LEVEL DEMOLITION PLAN

### DEMOLITION LEGEND

- REMOVE EXISTING WALL
- REMOVE EXISTING DOOR AND FRAME
- REMOVE PLUMBING FIXTURE. SEE PLUMBING FOR MORE INFORMATION.

### BID DOCUMENTS - NOT FOR CONSTRUCTION FULLY SPRINKLERED

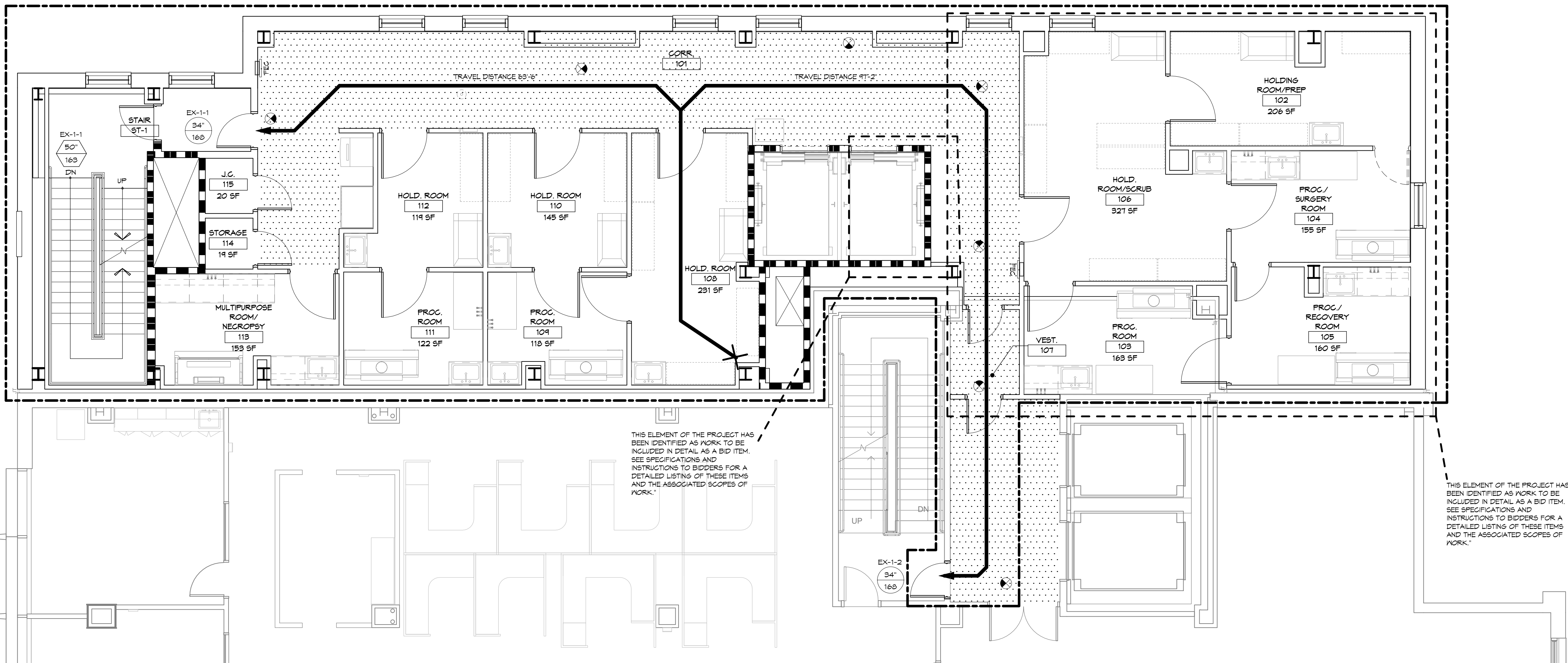
<b>CONSULTANTS:</b>			<b>ARCHITECT/ENGINEERS:</b>		<b>Drawing Title</b> DEMOLITION FLOOR PLANS		<b>Project Title</b> AE - UNIVERSITY DRIVE RESEARCH BUILDING ADDITION		<b>Project Number</b> VA244-P-1749		<b>Office of Construction and Facilities Management</b> Department of Veterans Affairs
			Miller-Remick LLC 1010 KINGS HIGHWAY SOUTH CHERRY HILL, NEW JERSEY 08034 PHONE: (856)429-4000 FAX: (856)429-5002		O'DONNELL & NACCARATO, INC. STRUCTURAL ENGINEERS 111 SOUTH INDEPENDENCE MALL EAST SUITE 900 PHILADELPHIA, PENNSYLVANIA 19106-2524 TELEPHONE: (215) 925-3788 FAX: (215) 927-1051 2028-0007-00		<b>Location</b> VA HEALTHCARE, PITTSBURGH PA		<b>Building Number</b> NO. 30		
			SIGNATURE: _____		Approved: Project Director		<b>Date</b> MAY 5, 2013		<b>Checked</b> WRN		
									<b>Drawing Number</b> DS1.01		<b>Drawing</b> 13 of 166



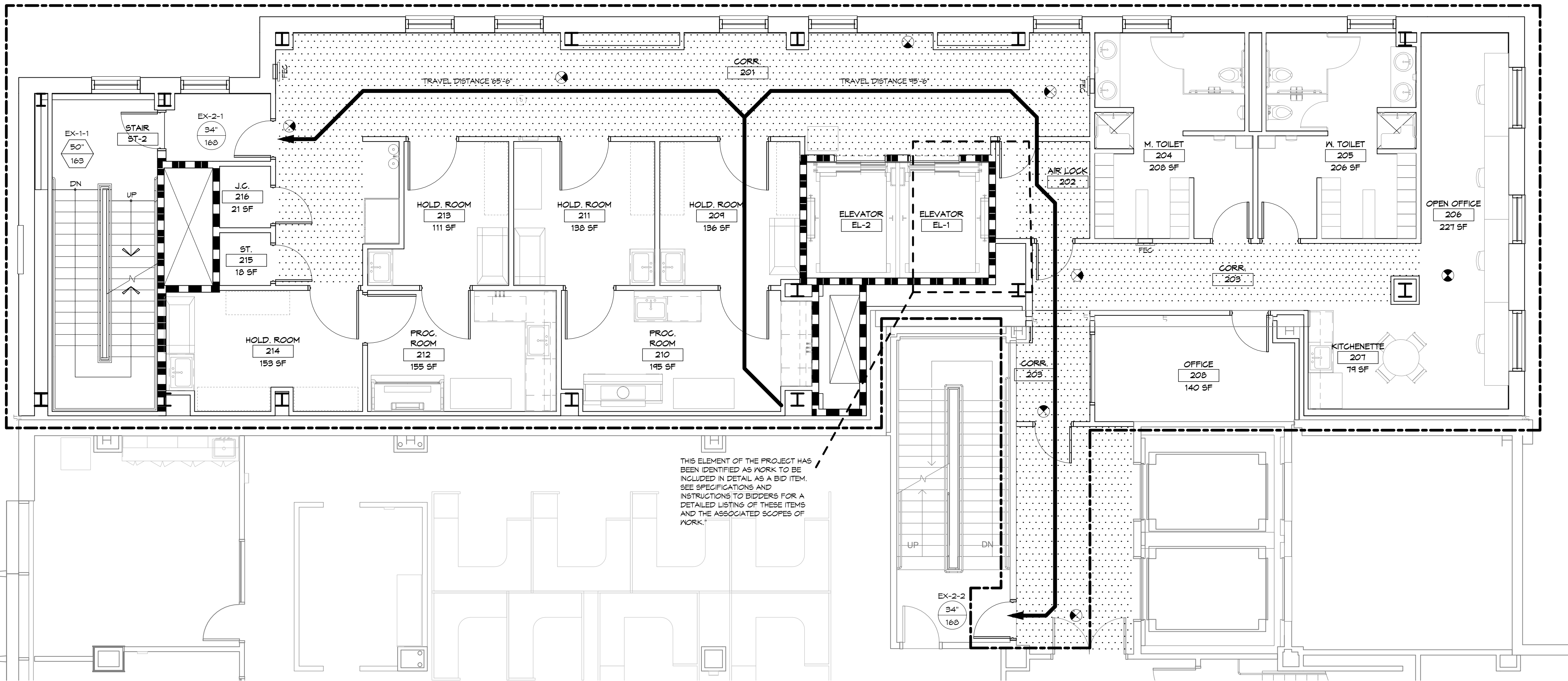




one eighth inch = one foot  
one quarter inch = one foot  
one half inch = one foot  
three eighths inch = one foot  
three quarters inch = one foot  
one inch = one foot  
one and one half inches = one foot  
two inches = one foot  
three inches = one foot  
three and one half inches = one foot  
four inches = one foot  
five inches = one foot  
six inches = one foot  
seven inches = one foot  
eight inches = one foot  
nine inches = one foot  
ten inches = one foot  
eleven inches = one foot  
twelve inches = one foot  
thirteen inches = one foot  
fourteen inches = one foot  
fifteen inches = one foot  
sixteen inches = one foot  
seventeen inches = one foot  
eighteen inches = one foot  
nineteen inches = one foot  
twenty inches = one foot  
twenty one inches = one foot  
twenty two inches = one foot  
twenty three inches = one foot  
twenty four inches = one foot  
twenty five inches = one foot  
twenty six inches = one foot  
twenty seven inches = one foot  
twenty eight inches = one foot  
twenty nine inches = one foot  
thirty inches = one foot  
thirty one inches = one foot  
thirty two inches = one foot  
thirty three inches = one foot  
thirty four inches = one foot  
thirty five inches = one foot  
thirty six inches = one foot  
thirty seven inches = one foot  
thirty eight inches = one foot  
thirty nine inches = one foot  
forty inches = one foot  
forty one inches = one foot  
forty two inches = one foot  
forty three inches = one foot  
forty four inches = one foot  
forty five inches = one foot  
forty six inches = one foot  
forty seven inches = one foot  
forty eight inches = one foot  
forty nine inches = one foot  
fifty inches = one foot  
fifty one inches = one foot  
fifty two inches = one foot  
fifty three inches = one foot  
fifty four inches = one foot  
fifty five inches = one foot  
fifty six inches = one foot  
fifty seven inches = one foot  
fifty eight inches = one foot  
fifty nine inches = one foot  
sixty inches = one foot  
sixty one inches = one foot  
sixty two inches = one foot  
sixty three inches = one foot  
sixty four inches = one foot  
sixty five inches = one foot  
sixty six inches = one foot  
sixty seven inches = one foot  
sixty eight inches = one foot  
sixty nine inches = one foot  
seventy inches = one foot  
seventy one inches = one foot  
seventy two inches = one foot  
seventy three inches = one foot  
seventy four inches = one foot  
seventy five inches = one foot  
seventy six inches = one foot  
seventy seven inches = one foot  
seventy eight inches = one foot  
seventy nine inches = one foot  
eighty inches = one foot  
eighty one inches = one foot  
eighty two inches = one foot  
eighty three inches = one foot  
eighty four inches = one foot  
eighty five inches = one foot  
eighty six inches = one foot  
eighty seven inches = one foot  
eighty eight inches = one foot  
eighty nine inches = one foot  
ninety inches = one foot  
ninety one inches = one foot  
ninety two inches = one foot  
ninety three inches = one foot  
ninety four inches = one foot  
ninety five inches = one foot  
ninety six inches = one foot  
ninety seven inches = one foot  
ninety eight inches = one foot  
ninety nine inches = one foot  
one hundred inches = one foot



1 LEVEL 1 EGRESS PLAN  
3/16" = 1'-0"



2 LEVEL 2 EGRESS PLAN  
3/16" = 1'-0"

LEGEND

- 1-HOUR FIRE PARTITION
- 2-HOUR FIRE PARTITION
- SCOPE OF WORK
- EXIT ACCESS CORRIDOR
- MAX TRAVEL DISTANCE, START POINT, DIRECTION & LENGTH
- EGRESS DIRECTION
- FIRE EXTINGUISHER CABINET
- EXIT #  
a. EGRESS WIDTH  
b. EGRESS COUNT
- STAIR EXIT NUMBER  
a. EGRESS WIDTH  
b. EGRESS COUNT

CALCULATIONS

OCCUPANT LOADS - LEVEL 1			
OCCUPANCY	GROSS SF	SF/PERSON (GROSS)	OCCUPANTS
BUSINESS	3,872	100	39
Grand total	3,872		39

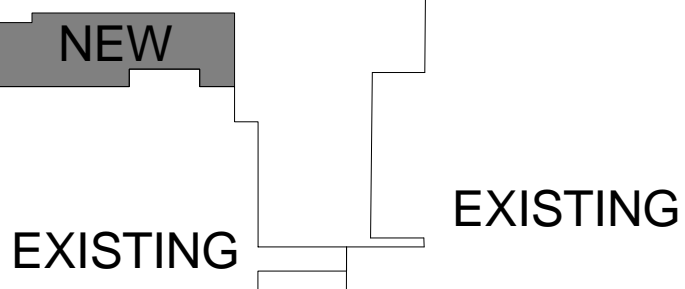
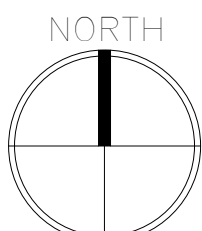
DOOR EXIT CAPACITY - LEVEL 1			
EXIT	DOOR WIDTH	IN/PERSON	OCCUPANTS
EX-1-1	34"	0.2	168
EX-1-2	34"	0.2	168
LEVEL 1	67'		336

STAIR - EXIT CAPACITY - LEVEL 1			
EXIT	STAIR WIDTH	IN/PERSON	OCCUPANTS
EX-1-1	50"	0.3	168
LEVEL 1	50'		168

OCCUPANT LOADS - LEVEL 2			
OCCUPANCY	GROSS SF	SF/PERSON (GROSS)	OCCUPANTS
BUSINESS	3,872	100	39
Grand total	3,872		39

DOOR EXIT CAPACITY - LEVEL 2			
EXIT	DOOR WIDTH	IN/PERSON	OCCUPANTS
EX-2-1	34"	0.2	168
EX-2-2	34"	0.2	168
LEVEL 2	101'		336

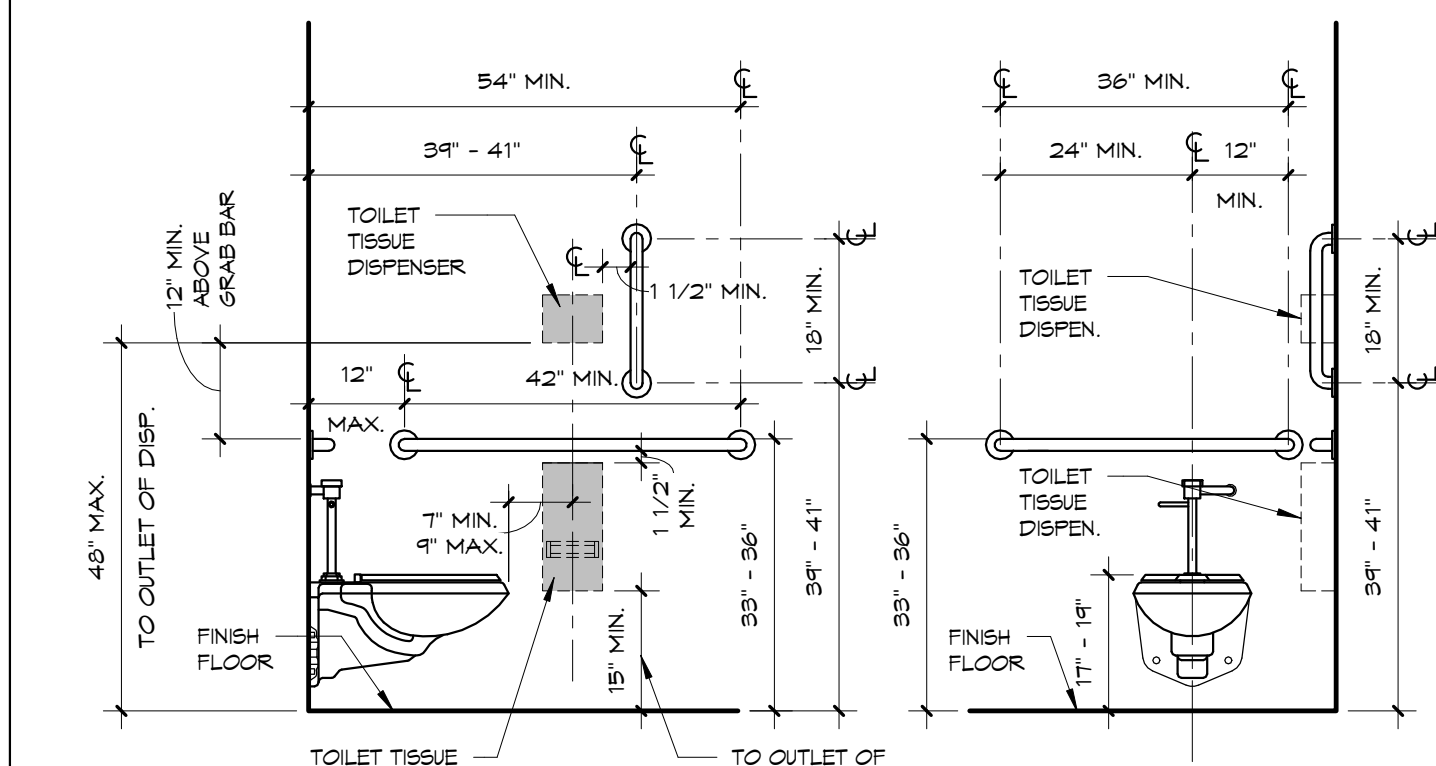
STAIR - EXIT CAPACITY - LEVEL 2			
EXIT	STAIR WIDTH	IN/PERSON	OCCUPANTS
EX-1-1	50"	0.3	168
LEVEL 1	50'		168



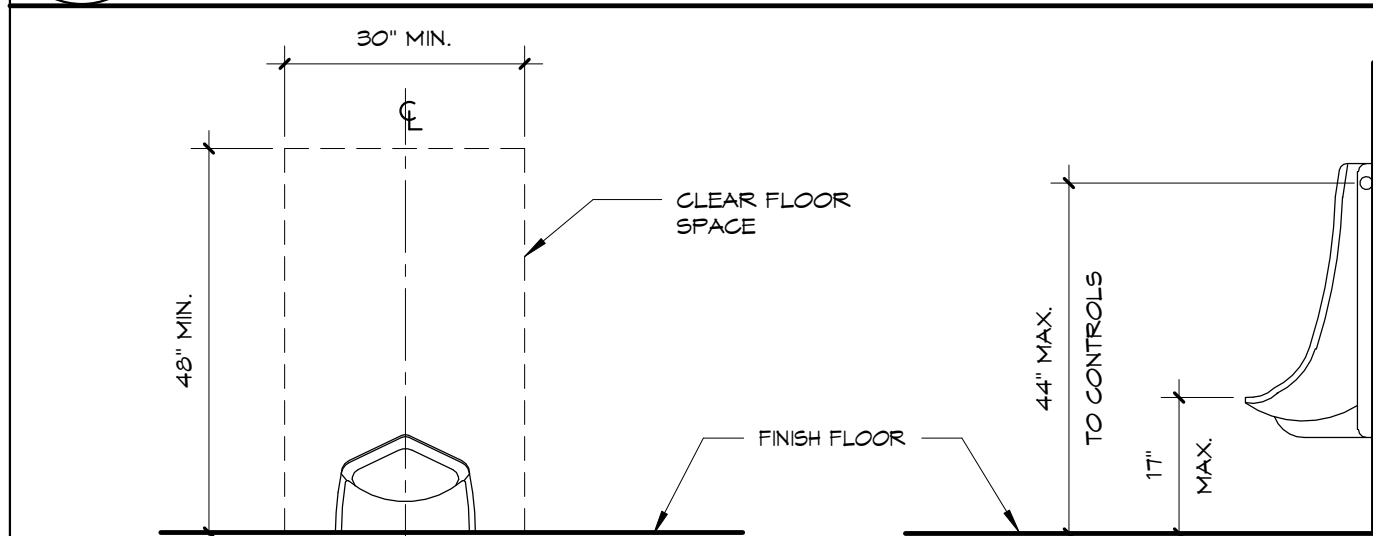
KEY PLAN

BID DOCUMENTS - NOT FOR CONSTRUCTION  
FULLY SPRINKLERED

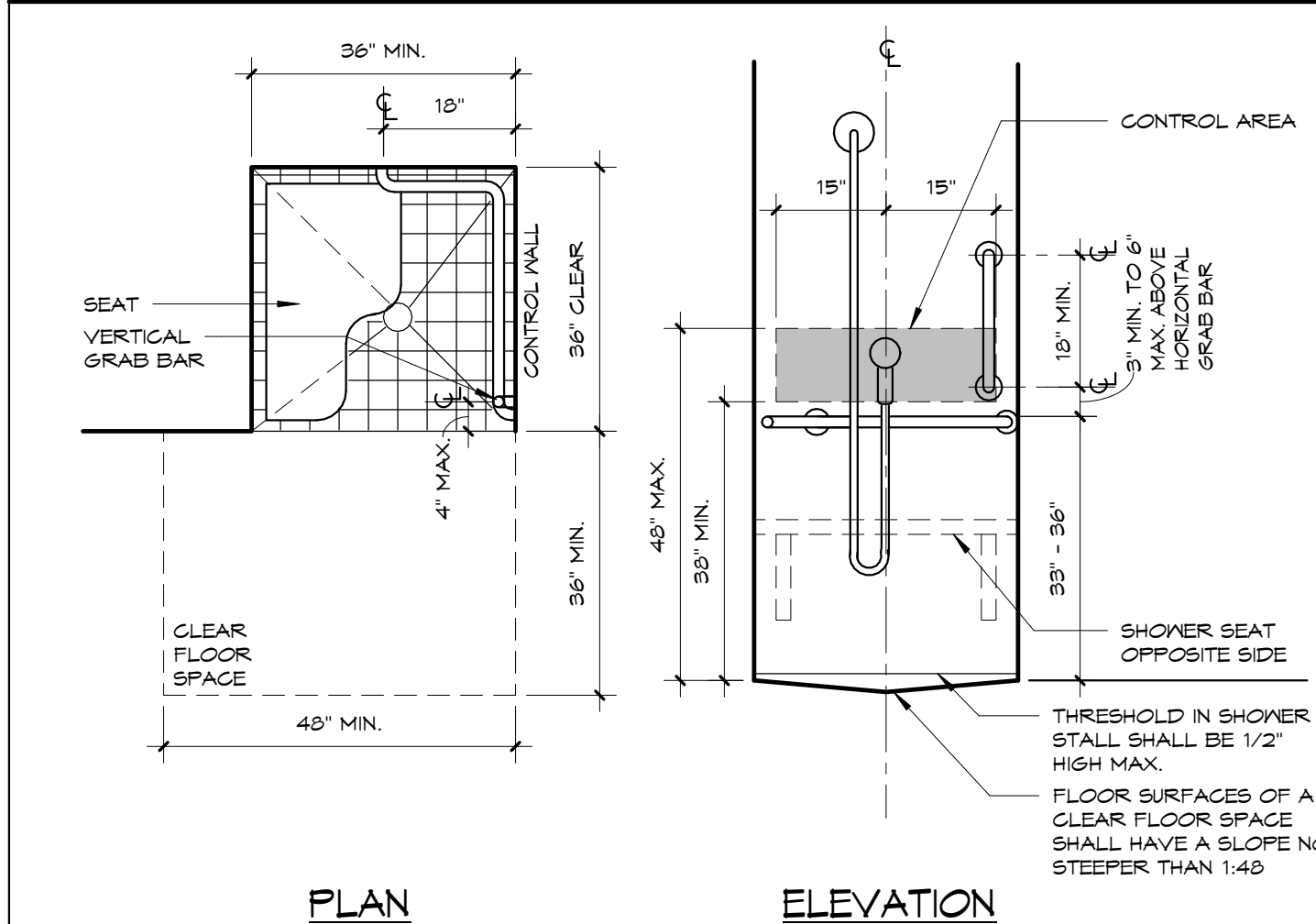
CONSULTANTS:			ARCHITECT/ENGINEERS:			Drawing Title EGRESS PLANS - 1ST & 2ND LEVELS		Project Title AE - UNIVERSITY DRIVE RESEARCH BUILDING ADDITION		Project Number VA244-P-1749		Office of Construction and Facilities Management Department of Veterans Affairs			
						Approved: Project Director		Location VA HEALTHCARE, PITTSBURGH PA		Building Number NO. 30					
								Date MAY 5, 2013		Drawing Number AS0.12					
NO. DESCRIPTION DATE			Architectural: Nadasky, Kopelson REGISTERED ARCHITECT FIRM PENNSYLVANIA LICENSE NO. A0001269			Miller-Remick LLC 1010 KINGS HIGHWAY SOUTH CHERRY HILL, NEW JERSEY 08034 PHONE: (856)429-4000 FAX: (856)429-5002			ARCHITECTS O'DONNELL & NACCARATO, INC. STRUCTURAL ENGINEERS 111 SOUTH INDEPENDENCE MALL EAST SUITE 900 PHILADELPHIA, PENNSYLVANIA 19106-2524 TELEPHONE: (215) 925-3788 FAX: (215) 927-1051 2028-0007/00			Checked WRN		Drawn KE	



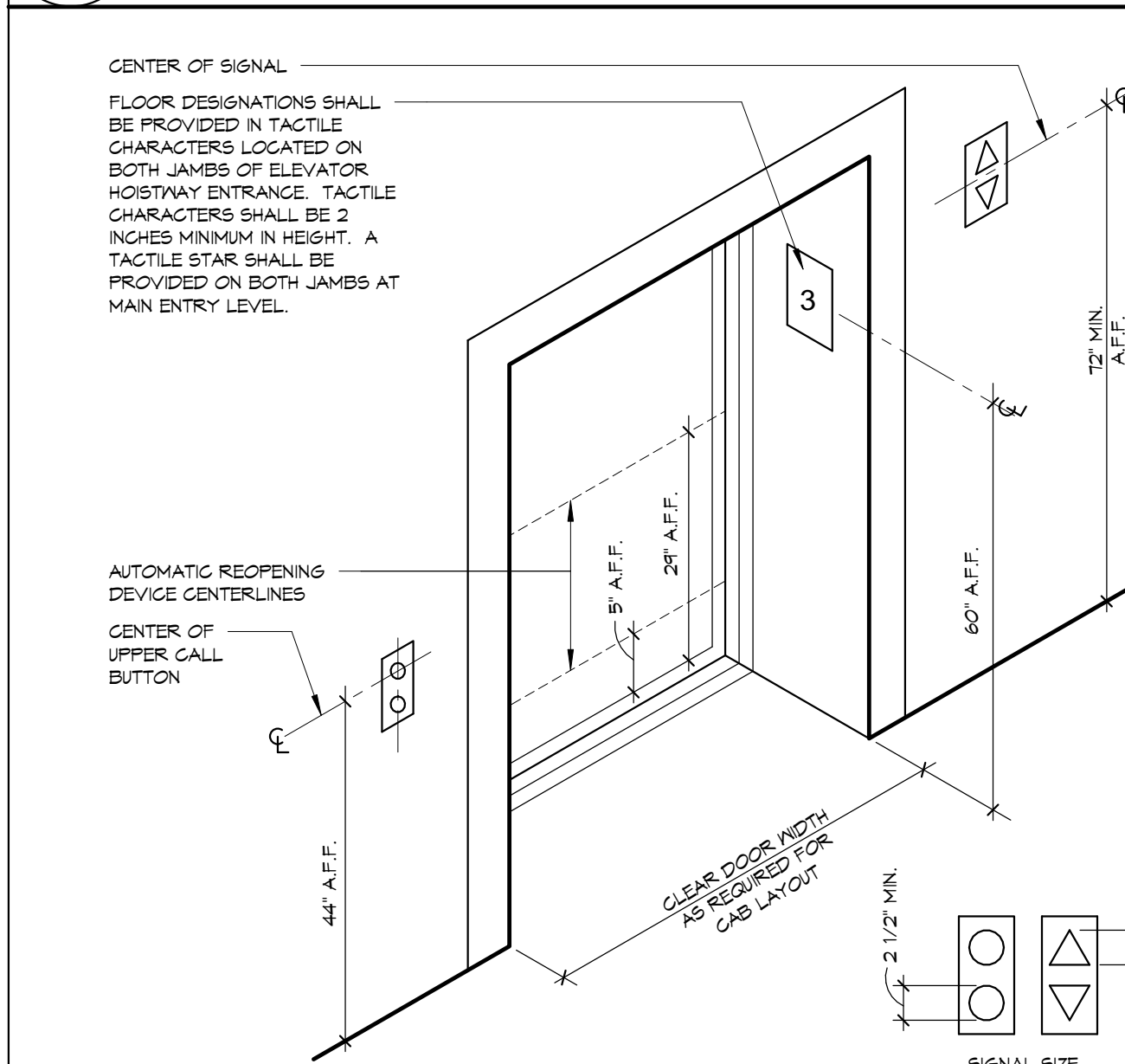
13 WATER CLOSET ELEVATIONS



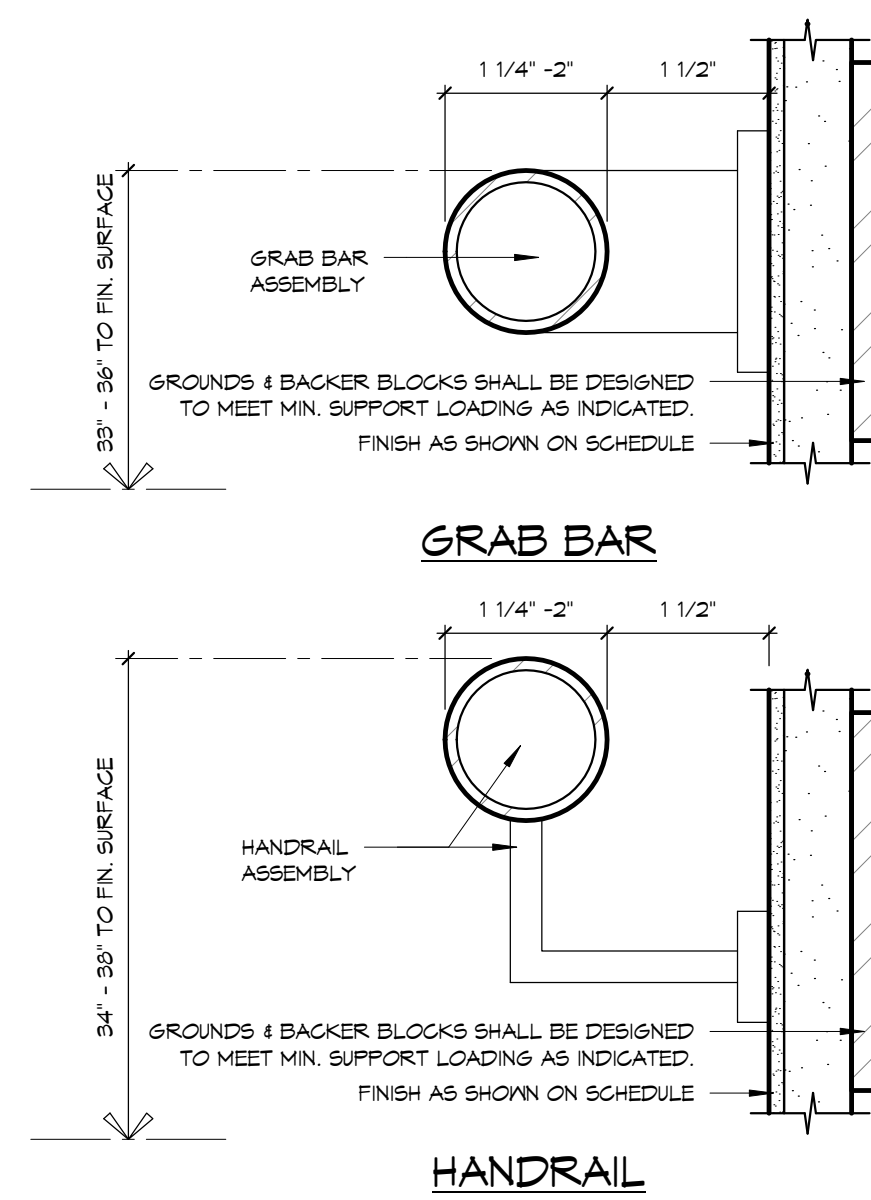
14 URINAL



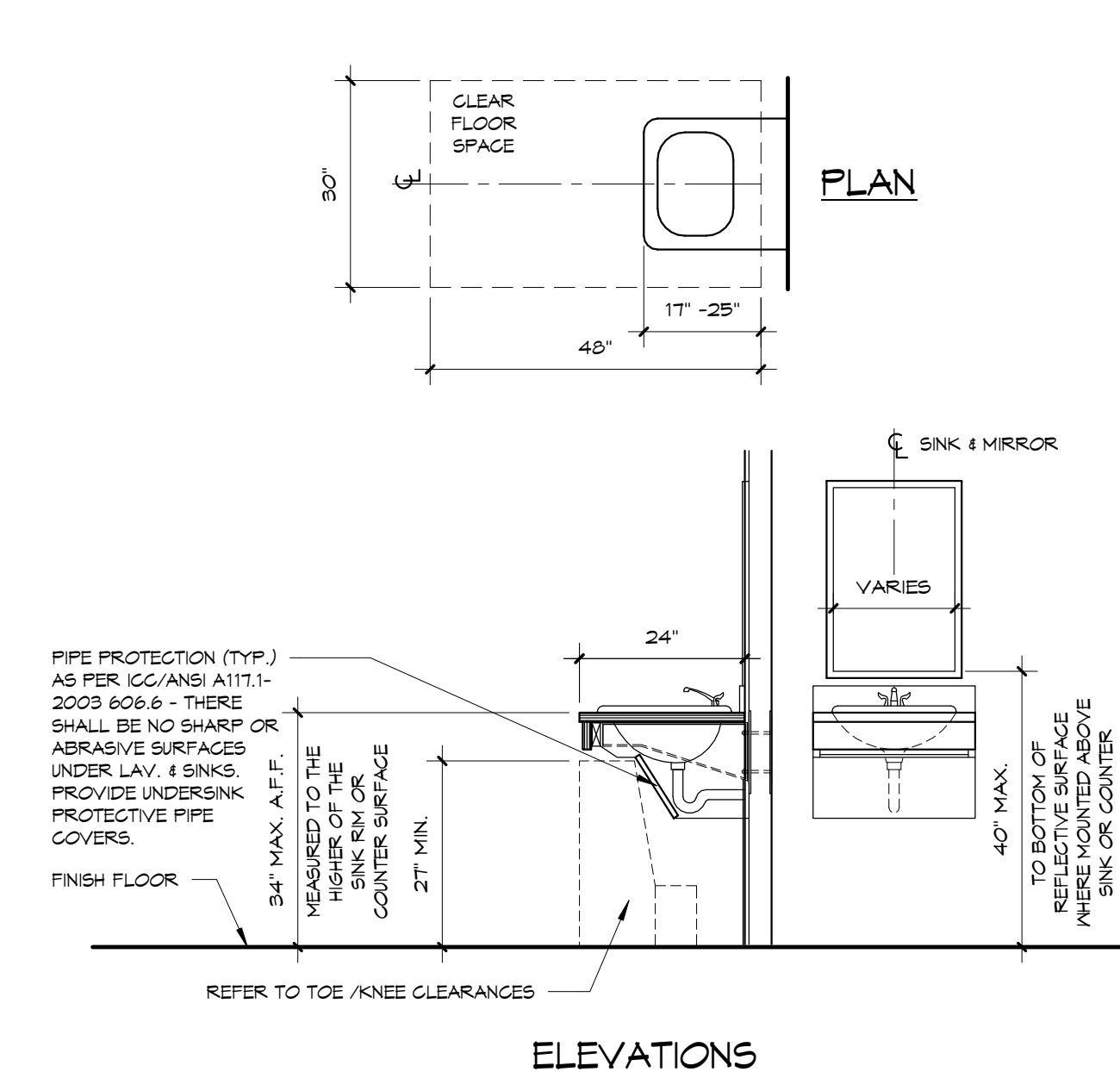
15 TRANSFER-TYPE SHOWERS



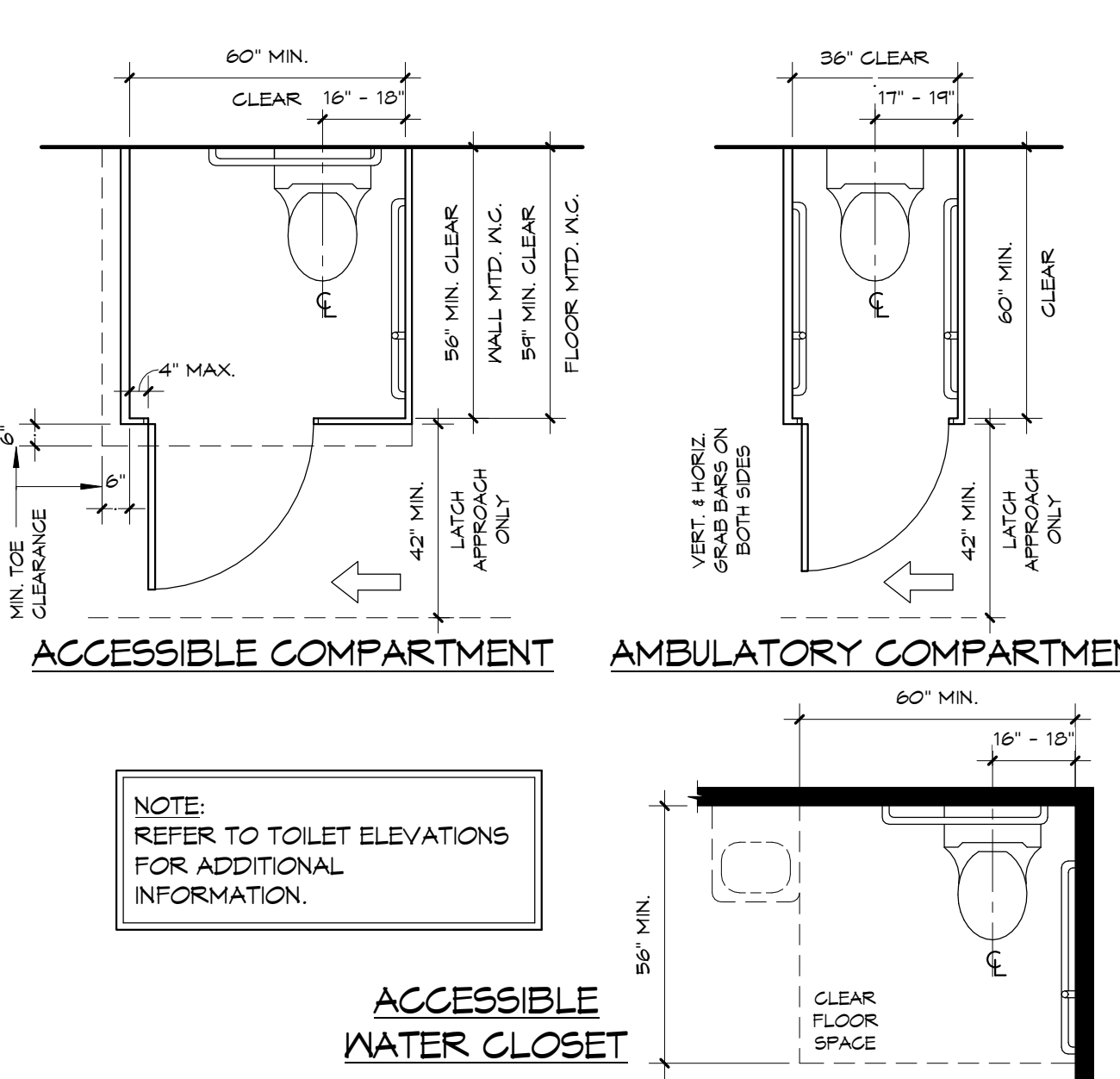
16 ELEVATOR ENTRANCE



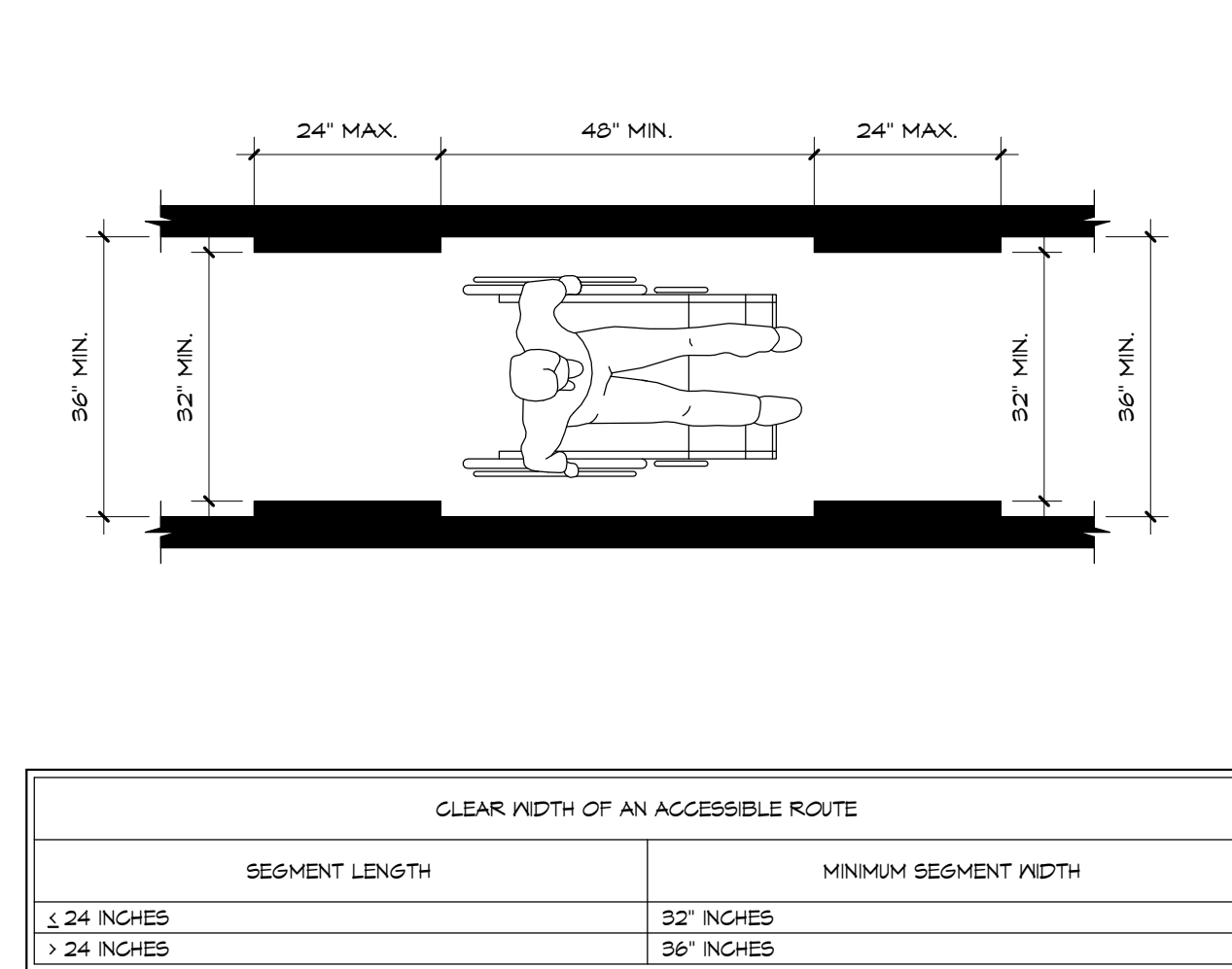
10 GRAB BARS & HANDRAILS



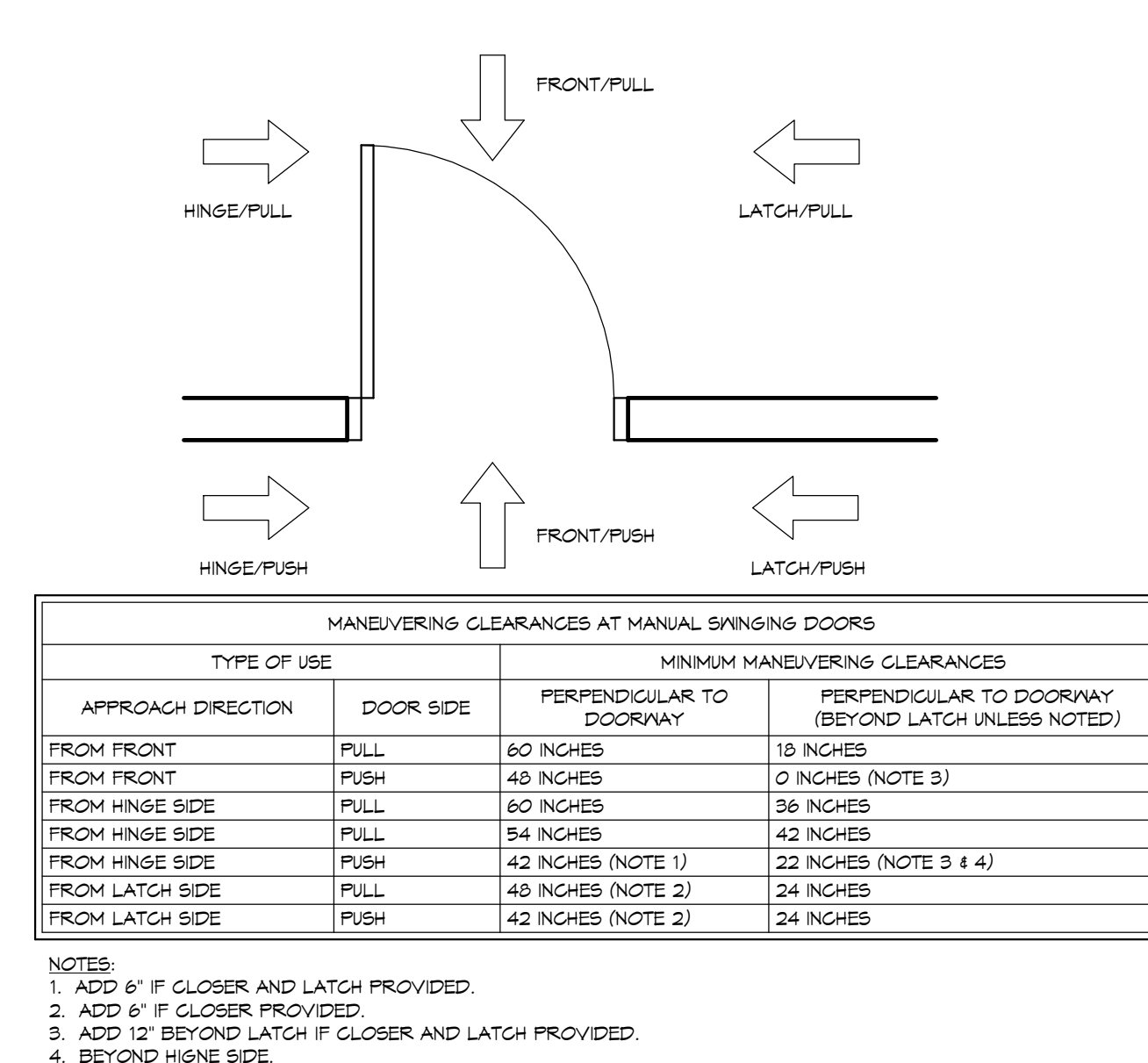
11 LAVATORIES AND SINKS



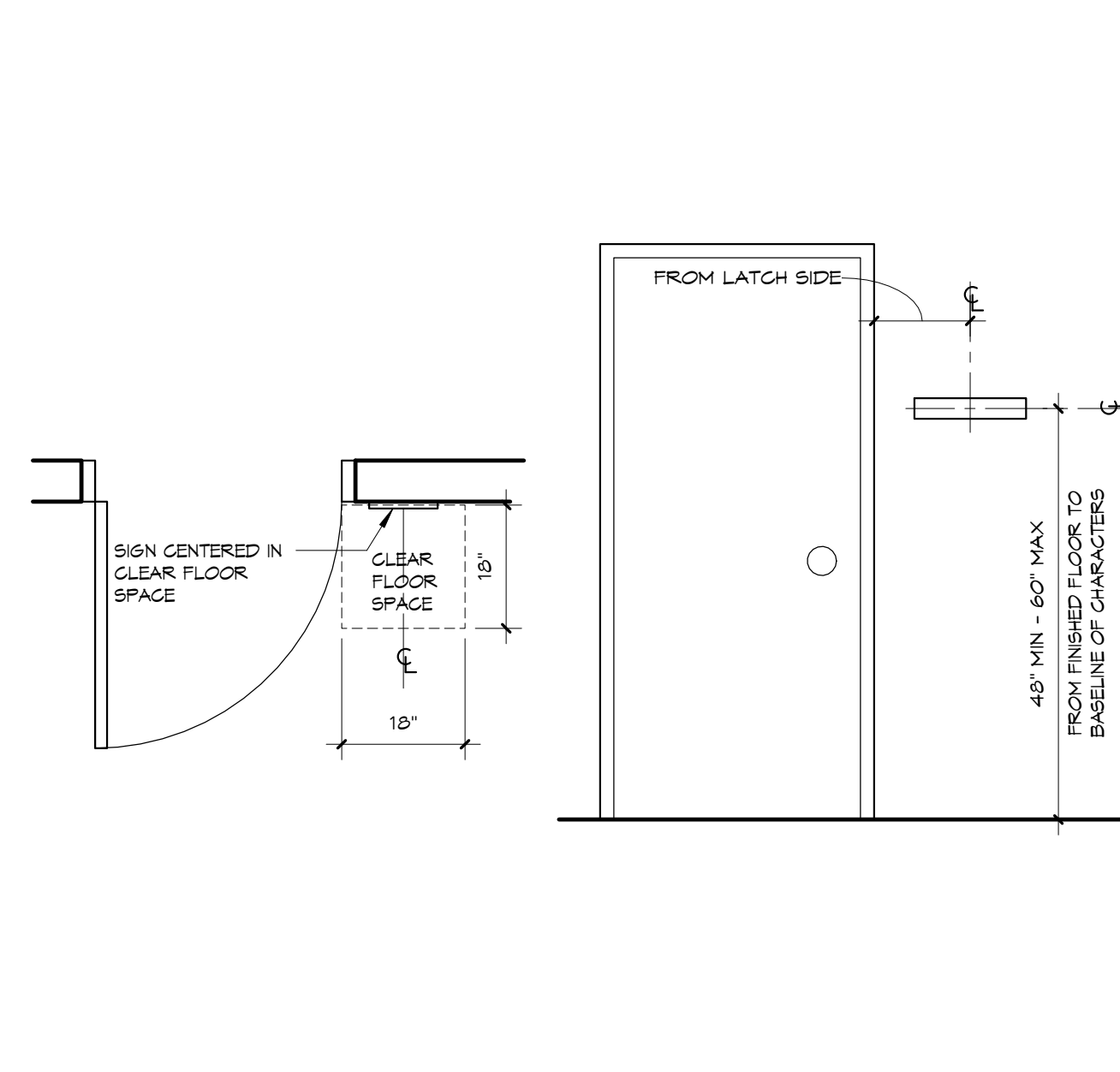
12 WATER CLOSET PLANS



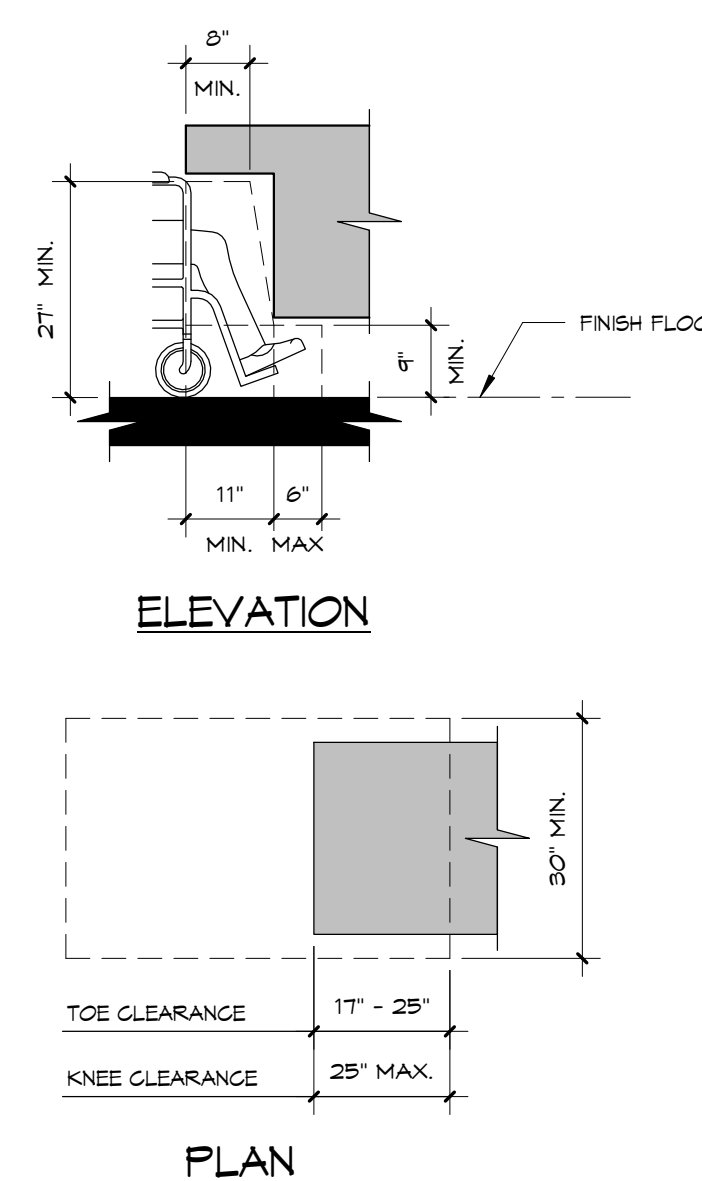
7 ACCESSIBLE ROUTE



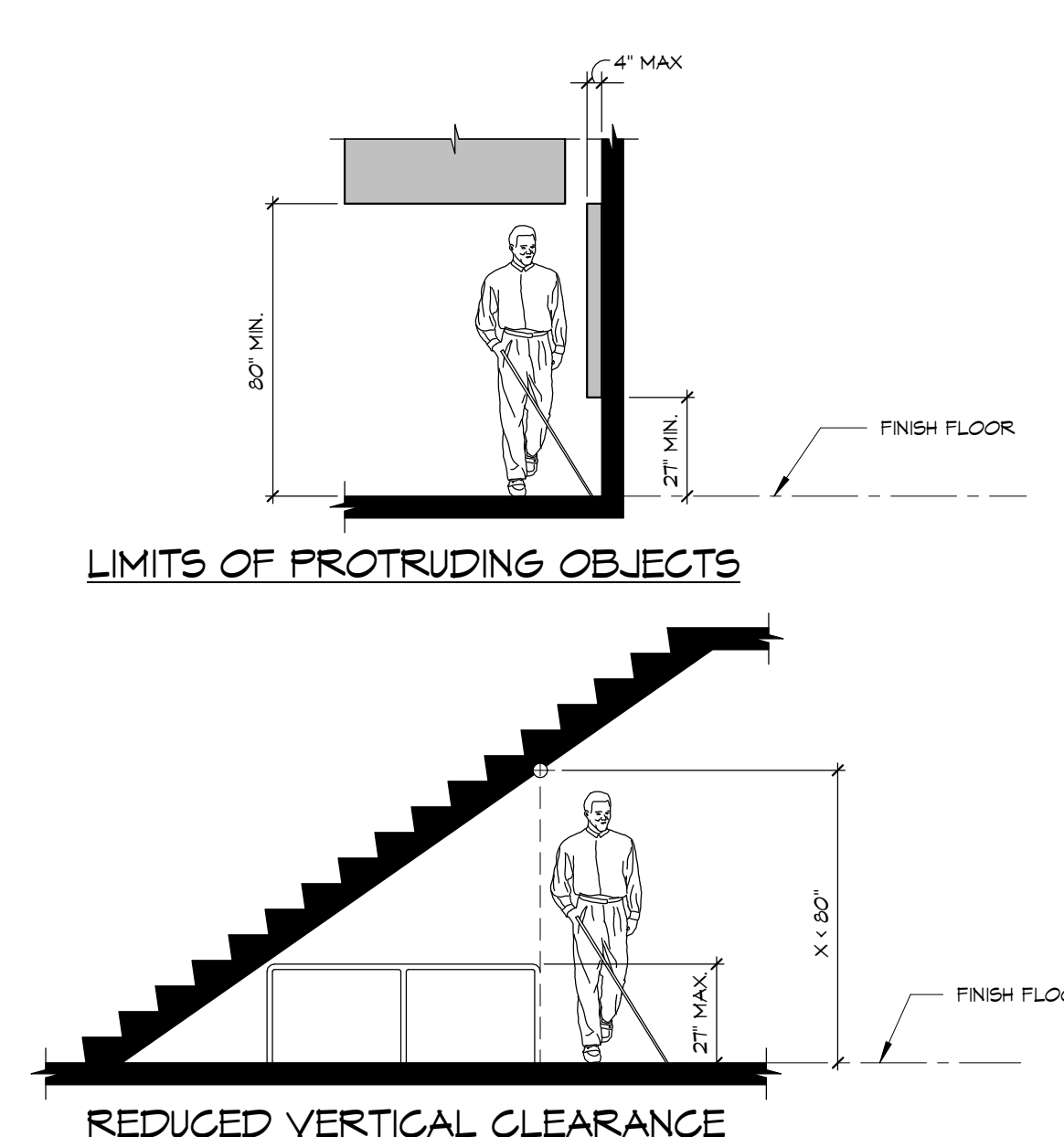
8 MANEUVERING CLEARANCES



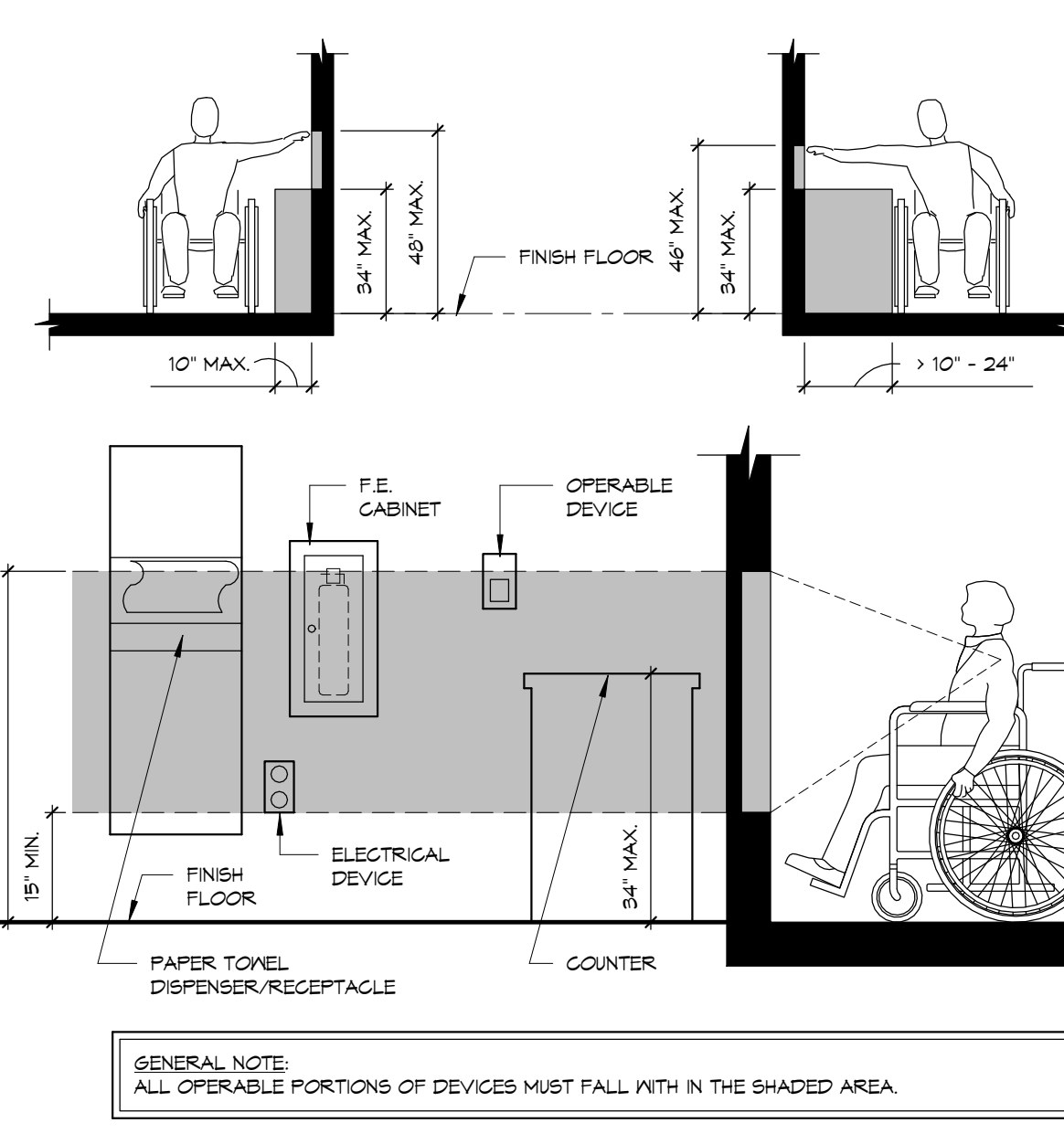
9 TACTILE INTERIOR SIGN



4 TOE / KNEE CLEARANCES



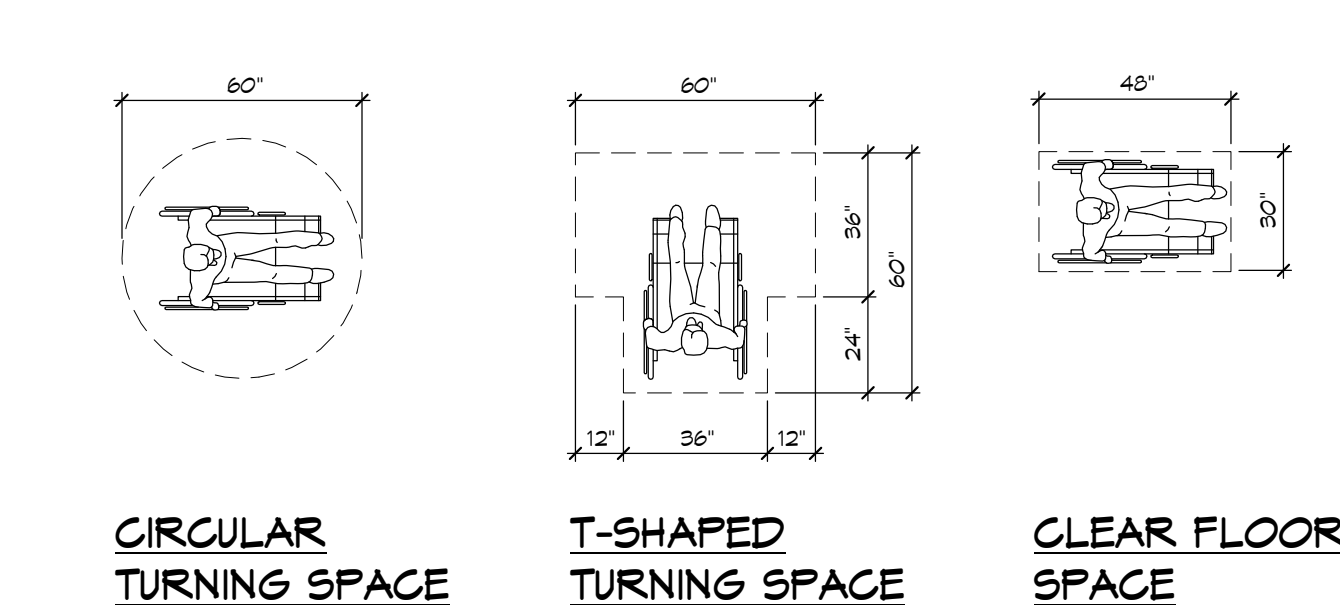
5 PROTRUDING OBJECTS



6 REACH / MOUNTING HEIGHTS

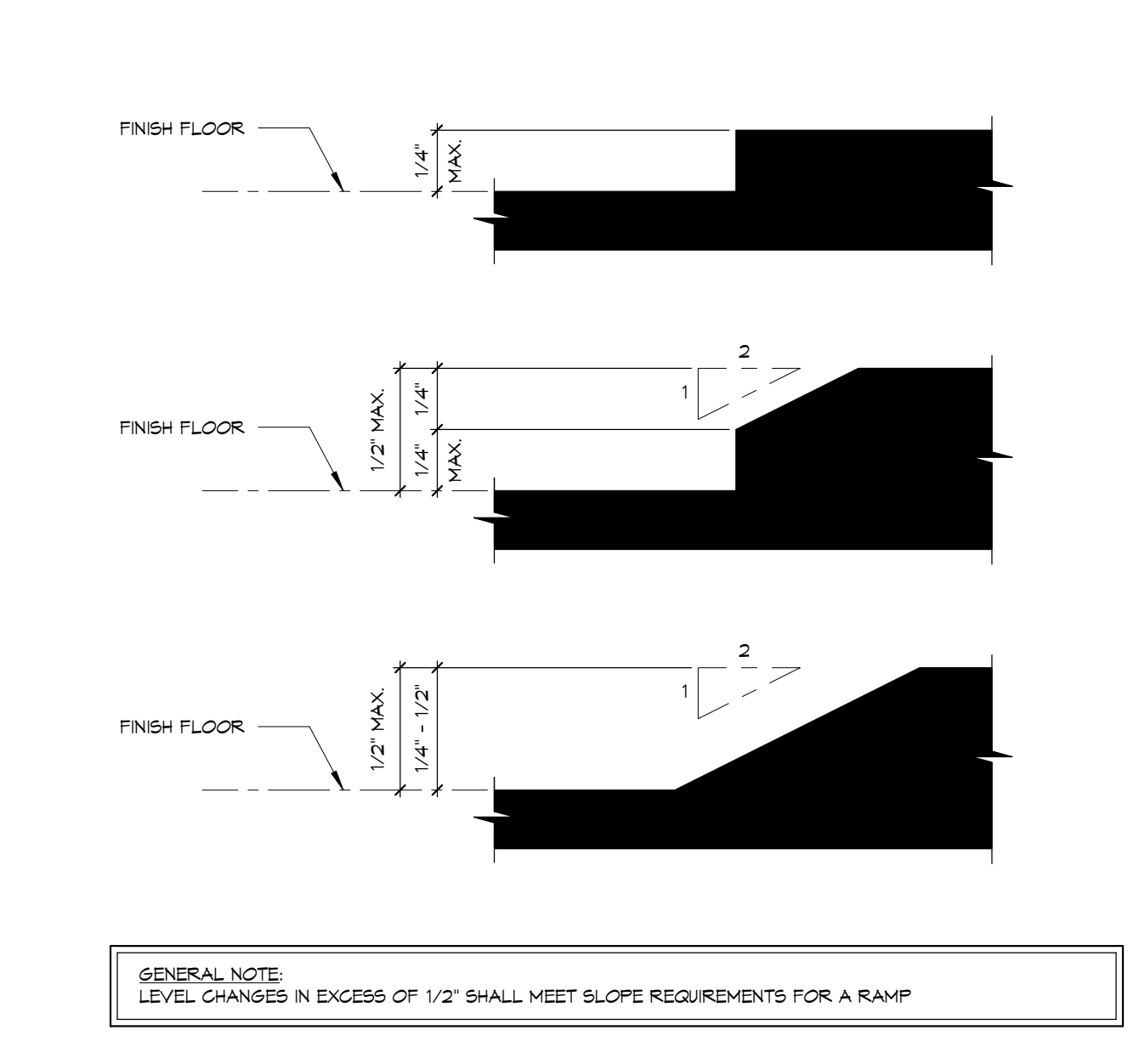
BARRIER-FREE STANDARDS INDICATED HEREIN ARE TYPICAL. DIMENSIONS SHOWN ARE TYPICAL UNLESS INDICATED OTHERWISE ELSEWHERE IN THE DRAWINGS.

- Refer to Sheet ASO-00 for applicable codes, standards, and guidelines.
- The clear width of a passageway for a single wheelchair shall be 32 inches for a passageway of 24 inches or less and 36 inches for a passageway longer than 24 inches.
- The clear floor space required for a single wheelchair shall be 30 inches by 48 inches.
- The clear width of an accessible route shall be 36 inches.
- Handrails: The top of gripping surface of handrails shall be 34 inches minimum and 38 inches maximum vertically above the stair nosing or ramp surface. Clear space between handrails and wall surface shall be 1 1/2" minimum.
- Protruding Objects: Objects with leading edges located more than 27 inches and not more than 80 inches above the floor shall protrude not more than 4 inches from the wall.
- Guardrails or other barriers shall be provided when vertical clearance of an area adjoining an accessible route is less than 80 inches high.
- Changes in Level: A change in level of 1/4 inch high maximum shall be permitted to be vertical and without edge treatment. A change in level of between 1/4 inch and 1/2 inch high maximum shall be beveled with a slope not steeper than 1:2.
- Accessible parking spaces shall be 96 inches wide and have an adjacent access aisle of not less than 60 inches minimum. Passenger loading zones shall provide an access aisle 60 inches wide and 20 feet long minimum adjacent to the vehicle pull-up space and at the same level as the roadway.
- Ramps shall have a slope not steeper than 1:12. The maximum rise for any ramp without a landing is 30 inches. The ramp shall have a clear width of 36 inches. Landing length shall be a minimum of 60 inches.
- Stair treads and risers shall be as follows: Stair treads shall be minimum of 11 inches deep, stair risers shall be a maximum of 7 inches high.
- Door closers shall be adjusted so that from an open position of 40 degrees, the time required to move the door to an open position of 12 degrees will be 5 seconds minimum.
- Door opening force where closers are used shall be 5 pounds maximum.
- The bottom 12 inches of all doors except automatic doors shall have a smooth uninterrupted surface to allow the door to be opened by a wheelchair footrest without creating a trap or hazardous condition.
- Power Assisted Doors: The time required for such doors to open to a back check position shall be 3 seconds minimum. The force required to stop door movement shall be 15 pounds maximum.
- Exposed pipes and surfaces under lavatories and sinks shall be insulated or otherwise configured to protect against contact.
- Grab Bars shall have a diameter or width of gripping surface from 1 1/4 to 2 inches. The clear space between the grab bar surface and the wall surface shall be 1-1/2 inches minimum.
- Structural strength: Allowable stresses in bending, shear and tension shall not be exceeded for materials used where a vertical or horizontal force of 250 pounds is applied at any point on the grab bar or seat, fastener mounting device or supporting structure.



CIRCULAR TURNING SPACE T-SHAPED TURNING SPACE CLEAR FLOOR SPACE

2 ACCESSIBILITY NOTES & INFO.



3 LEVEL CHANGES - (UP TO 1/2")

BID DOCUMENTS - NOT FOR CONSTRUCTION  
FULLY SPRINKLERED

CONSULTANTS:			Architectural: Madsen & Kaplan REGISTERED ARCHITECTURAL FIRM PENNSYLVANIA LICENSE NO. A001293		ARCHITECT/ENGINEERS: Miller-Remick LLC 1010 KINGS HIGHWAY SOUTH SUITE 100 CHERRY HILL, NEW JERSEY 08034 PHONE: (856) 429-4000 FAX: (856) 429-5002		ARCHITECTS O'DONNELL & NACCARATO, INC. STRUCTURAL ENGINEERS 111 SOUTH INDEPENDENCE MALL EAST SUITE 900 PHILADELPHIA, PENNSYLVANIA 19106-2524 TELEPHONE: (215) 925-3785 FAX: (215) 927-1051 2028-0007-00		Drawing Title TYPICAL BARRIER FREE STANDARDS Approved: Project Director		Project Title AE - UNIVERSITY DRIVE RESEARCH BUILDING ADDITION Location VA HEALTHCARE, PITTSBURGH PA Date MAY 5, 2013 Checked WRN Drawn KE		Project Number VA244-P-1749 Building Number NO. 30 Drawing Number ASO.20 Drawing 17 of 166		Office of Construction and Facilities Management Department of Veterans Affairs	
--------------	--	--	--	--	---	--	---	--	--	--	---	--	--	--	--	--