

SIZE	'S' +1/4, -0 [+6, -0]
26 X 37.5 X 48 [660 X 953 X 1219]	60 [1524]
26 X 37.5 X 60 [660 X 953 X 1524]	72 [1829]

ALL DIMENSIONS ARE IN INCHES (MILLIMETERS)
ALSO REFER TO GENERAL NOTES
APPLICABLE TO EQUIPMENT DRAWINGS
DWG. NO. 62941-091

STERIS
STERIS Corporation
Mentor, OH

26x37.5 AMSCO CENTURY
VACAMATIC STERILIZER
DOUBLE HINGED DOORS
REC 2/WALLS, BIOSEAL/NOE
STEAM HEAT
COMPRESSED AIR

SHT. 1 OF 3

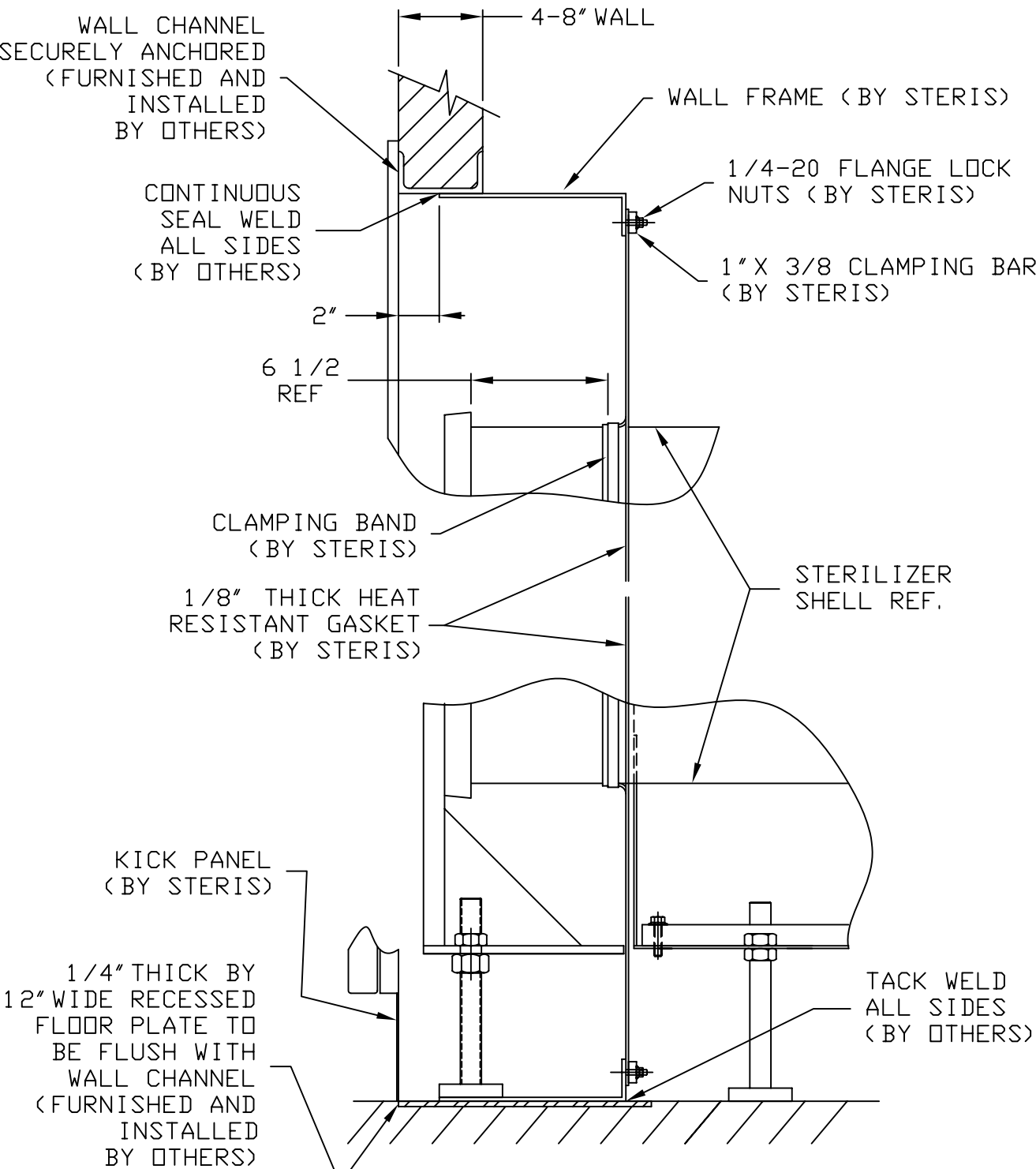
EQUIPMENT DRAWING NO.
387351-129

ITEM _____
LOCATION(S) _____

AUTOCAD. DWG.

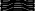
OPERATING REQUIREMENTS

- (A) COLD WATER: SUPPLY TEMPERATURE REQUIREMENT IS 70°F (21°C) MAX. VACUUM EFFICIENCY IS REDUCED AT WATER TEMPERATURES ABOVE 70°F (21°C).
1" NPT, 20-50 PSIG DYNAMIC (1.38-3.45 bar)
CONSUMPTION:
PEAK- 15 GPM (57 lpm)
AVERAGE-26 X 37.5 X 48 130 GPH (8.3 lpm)
26 X 37.5 X 60 130 GPH (8.3 lpm)
- (B) STEAM: 1" NPT, 50-80 PSIG DYNAMIC (3.45-5.52 bar)
97 TO 100% VAPOR QUALITY.
CONSUMPTION:
PEAK- 26 X 37.5 X 48 255 LB/HR (116 kg/hr)
AVERAGE-26 X 37.5 X 48 148 LB/HR (67 kg/hr)
PEAK- 26 X 37.5 X 60 335 LB/HR (152 kg/hr)
AVERAGE-26 X 37.5 X 60 185 LB/HR (84 kg/hr)
- (C) DRAIN TERMINAL: 2" ODT (FLOOR DRAIN CAPACITY MUST HANDLE PEAK WATER CONSUMPTION).
- (D) CONTROL POWER:
120V, 50/60HZ, 2A, SINGLE PHASE ELECTRIC SERVICE.
MINIMUM 3A CIRCUIT BREAKER RECOMMENDED.
- (E) VACUUM PUMP POWER:
208/240V, 50/60HZ, 6A, (3) PHASE. MINIMUM 8A CIRCUIT BREAKER RECOMMENDED.
OR
480V, 50/60HZ, 3A, (3) PHASE. MINIMUM 4A CIRCUIT BREAKER RECOMMENDED.
- (F) COMPRESSED AIR: 1/2" NPT DEHUMIDIFIED,
OIL FREE 70-120 PSIG, 2 CFM



BIOSEAL DETAIL

SHT. 2 OF 3

ALL DIMENSIONS ARE IN INCHES (MILLIMETERS) ALSO REFER TO GENERAL NOTES APPLICABLE TO EQUIPMENT DRAWINGS DWG. NO. 62941-091		26x37.5 AMSCO CENTURY VACAMATIC STERILIZER DOUBLE HINGED DOOR REC 2/WALLS, BIOSEAL/NOE STEAM HEAT COMPRESSED AIR	EQUIPMENT DRAWING NO. 387351-129
STERIS®  STERIS Corporation Mentor, OH			ITEM _____ LOCATION(S) _____ _____

AUTOCAD. DWG.

INSTALLATION SPECIFICATIONS:

THE INSTALLATION OF THE AMSCO CENTURY STERILIZER MUST MEET ALL FEDERAL, STATE AND LOCAL REGULATIONS.


INSTALLATION SPECIFICATION IS LISTED AS ENGINEERING AND INSTALLATION GUIDES. REFERENCED COMPONENTS AND SERVICE CONNECTIONS ARE NOT FURNISHED AS PART OF EQUIPMENT UNLESS UNDER WRITTEN AGREEMENT WITH STERIS.

- 1. PIPE SIZES LISTED UNDER **OPERATING REQUIREMENTS** INDICATE THE EQUIPMENT TERMINATION SIZES ONLY. SIZE PIPING TO EQUIPMENT DEPENDING ON LENGTH OF PIPE RUN FROM PRESSURE REGULATING STATION FOR STEAM LINE AND MAIN WATER HEADERS. TO SUPPLY THE SPECIFIED SERVICE PRESSURE AND FLOW RATE AT EQUIPMENT TERMINALS, INCLUDE EFFECT OF COINCIDENT DRAW OF MULTIPLE UNIT INSTALLATIONS.
- 2. PROVIDE PIPING, SHUT-OFF VALVE, PIPE PLUGGED TEE, AND UNION IN STEAM & WATER SUPPLY CONNECTION BETWEEN EQUIPMENT AND STUB OUTS. PLUGGED TEE CAN LATER BE USED FOR TEST PRESSURE GAUGE CONNECTION. ARRANGE CONNECTION PIPING TO ALLOW ACCESS TO MACHINE COMPONENTS AND ELECTRICAL CONTROL PANEL.
- 3. RECOMMEND PROVISION OF BLOW DOWN VALVE AT EACH STEAM AND WATER STRAINER TO ENABLE STRAINER CLEAN OUT.
- 4. FOR RECOMMENDED FEED WATER QUALITY FOR STERILIZERS SEE STERIS DWG. NO. 62941-091.
- 5. BLOW DOWN BUILDING STEAM & WATER SUPPLY LINES BEFORE FINAL CONNECTION TO EQUIPMENT.
- 6. PROVIDE GROUPED OR GANGED CIRCUIT PROTECTION AND DISCONNECT FOR CONTROL POWER (D) AND VACUUM PUMP POWER (E) AS REQUIRED BY NEC AND LOCAL CODES. INDIVIDUAL POWER SHUTOFFS RECOMMENDED NEAR EACH MACHINE FOR SERVICING.
- 7. PROVIDE GROUNDED METAL CONDUIT AND WIRING BETWEEN EQUIPMENT TERMINALS AND STUB OUTS OR DISCONNECTS. 14 AWG. MINIMUM SIZE RECOMMENDED.
- 8. THE STERILIZER IS NOT SUPPLIED WITH A VACUUM BREAKER OR BACKFLOW PREVENTER AND WHERE REQUIRED BY LOCAL CODES, INSTALLATION OF SUCH A DEVICE IN WATER LINE IS BY OTHERS.
- 9. STERIS ASSUMES NO RESPONSIBILITY FOR CHANGES MADE NECESSARY THROUGH FAILURE TO OBSERVE THE SPECIFICATIONS ON EQUIPMENT DRAWING AND NOTE PAGES. SPECIFICATIONS AND DESCRIPTIONS ARE SUBJECT TO CHANGE WITHOUT NOTICE.

GENERAL DOMESTIC NOTES:

- 1. WALL THICKNESS: 4" TO 8" (102-203)
- 2. UNIT WIDTH IS 37 1/2". DOOR OPENINGS IN FACILITY MUST BE 38" WIDE OR LARGER TO ACCOMMODATE STERILIZER.
- 3. DISPLAY THIS SIDE FOR LH DOOR SWING AND OPPOSITE SIDE FOR RH DOOR SWING.
- 4. FOR GENERAL INSTALLATION INFORMATION SEE STERIS DRAWING NO. 62941-091. (THIS DWG. SHOULD ALWAYS ACCOMPANY THE EQUIPMENT DWGS.) IF DWG. IS NOT ATTACHED, CONTACT STERIS SERVICE ENGINEERING AT 1-800-333-8848 TO OBTAIN A COPY.
- 5. MAX. OPERATING WEIGHT BASED ON CHAMBER FULLY LOADED WITH WATER FLASKS:
 - 26 X 37.5 X 48 - 4500LBS (2038KG)
 - 26 X 37.5 X 60 - 5000LBS (2263KG)
- 6. HEAT LOSS BTU/HR AT 70°F (21°C):
 - 26 X 37.5 X 48 - TO ROOM: 17275 BTU/HR
 - 26 X 37.5 X 60 - TO ROOM: 19425 BTU/HR
- 7. ALL DIMENSIONS IN INCHES AND [MM].
- 8. THIS SERVICE CLEARANCE MUST BE MAINTAINED TO ALLOW ACCESS TO STERILIZER FOR SERVICE ABILITY.
- 9. LEVELING FEET ARE PROVIDED FOR PROPER INSTALLATION.
- 10. IF LOADING CAR AND CARRIAGE ARE TO BE USED, FRONT CLEARANCE SHOULD EQUAL TWICE THE LENGTH OF THE STERILIZER.

SHT. 3 OF 3

ALL DIMENSIONS ARE IN INCHES (MILLIMETERS) ALSO REFER TO GENERAL NOTES APPLICABLE TO EQUIPMENT DRAWINGS DWG. NO. 62941-091		26x37.5 AMSCO CENTURY VACAMATIC STERILIZER DOUBLE HINGED DOOR REC 2/WALLS, BIOSEAL/NOE STEAM HEAT COMPRESSED AIR	EQUIPMENT DRAWING NO. 387351-129
STERIS®  STERIS Corporation Mentor, OH			ITEM _____ LOCATION(S) _____ _____

AUTOCAD. DWG.