

Statement of Work
PROXIMITY CARD READER INSTALLATION EXTERIOR DOORS LINCOLN & GRAND ISLAND

Introduction: Added security is needed for the Each Location's Main Facility Entrances. The installation of proximity readers will provide additional security for the Veteran's and Employees by giving the Police the ability to Lockdown the Facilities in case of an emergency.

Scope of Work: The contractor will provide, and install, HSPD-12/ FIPS 201 compliant HID RP40 Readers and associated panels and hardware for the various Exterior locations around each Facility. This scope of work includes the manipulation of existing data so it can be included into the Police Service Proximity System in a manner suitable to the VA. The Grand Island Installations (14 proximity readers, 7 two door panels & associated hardware (Schlage 12 VDC Electrified cylindrical lockset with rex function, Electric power transfer door hinges, ¾ inch recessed door switches)) will be programmed and integrated into that facility's Physical Access Control System (PACS) which is controlled VA Police Grand Island. The Lincoln Installations

(12 proximity readers, 6 two door panels & associated hardware (Schlage 12 VDC Electrified cylindrical lockset with rex function, Electric power transfer door hinges, ¾ inch recessed door switches)) will be programmed and Integrated into the Omaha Facility's PACS which is controlled by VA Police Omaha. This must include programming for all existing and new access levels, personnel, and time schedules the COTR (Guerrier) will assist in the programming. The COTR will meet with proposed bidders at each location at a time set by the Contracting Officer. At this time locations for the new readers will be confirmed and the locations of the closest interior IRMS or Electrical rooms for the installation of the associated Security panels will be determined. Coordination with Each Facility's IRMS Department is essential in order to obtain the proper IT drops for connectivity to the PACS system.

Proposed equipment must be as follows for system compatibility:

13 - Continental CICP1300 Two door card access panel (7 GI & 6 Lincoln)

2 - Continental CICP1300NETBD, Network adaptor for each two door panel (26 total)

26 - HID RP40 FIPS201 Compliant 75 Bit PIV/Proximity card readers (14 GI & 12 Lincoln)

And associated door hardware (Schlage 12 VDC Electrified cylindrical lockset with rex function, Electric power transfer door hinges, ¾ inch recessed door switches)

Requirements: The contractor will install proximity readers, card access panels, and associated hardware (Schlage 12 VDC Electrified cylindrical lockset with rex function, Electric power transfer door hinges, ¾ inch recessed door switches), and associated replacement door hardware as needed at the following locations:

Exterior Entrances Utilized by Employees & Veteran's as designated on plot plans. (see attch)

Prior to installation a walk-thru with the COTR and the Contractor will be conducted to identify specific locations to install proximity readers, replacement door hardware, panels, and memory boards. Proximity readers will be located on Exterior facility entrances.

Deliverables: See attached.

Constraints: Contractors must meet IRMS security clearance requirements for unescorted entry into IRMS closets and tower rooms. All contracting personnel must meet HSPD-12 security requirements and obtain a Non-Piv card in order to work at VA facilities. COTR will assist in getting personnel fingerprinted and badged prior to commencement of work. Contractor must pre-notify the COTR and Police Service if work is to be conducted during non-normal duty hours (i.e. evenings, nights, weekends, etc.). Contractor should not perform work during peak patient care times (i.e. shift change, physician rounds, medication rounds, sleep times, etc.). No deviation in the location of the Proximity readers will be made without prior approval by the Contracting Officer. All work shall be coordinated through the COTR and must be completed within 90 days of the contract being awarded.

FUNCTIONAL REQUIREMENTS:

Requirements	Description
6 Pairs of External Two Door Access Panels for NWIHCS Lincoln and 7 Pairs of External Two door Access Panels for NWIHCS Grand Island.	Two door card access panels to include: Network adaptor Memory expansion board Supervised power supply Relay module 12 GSA approved proximity/smart card readers for Lincoln and 14 for Grand Island to include: Schlage 12VDC Electrified cylindrical lockset with rex function Electric power transfer door hinges ¾ in. recessed door switch Necessary hardware and labor
Warranty	The vendor shall provide a minimum of a one (1) year warranty.
Service and Operator Manuals	The vendor shall provide the following documentation for the proposed system: 1. Copy of the Operator's Manual. 2. Copy of complete technical service manuals including troubleshooting guides, necessary diagnostic software and equipment, schematic diagrams, and parts lists.
Cleaning Instructions/Training	The vendor shall provide instruction for the basic functions of the device.

Other purchase considerations include:

- Construction Quality –
 1. The equipment should provide security.
 2. All components should be securely mounted.
 3. The equipment should be secure and provide safety and protect against electrically energized parts.
 4. The equipment should be well constructed with durable materials to withstand typical abuse and cleaning.

5. Switches, knobs, and other controls should be designed for conditions of heavy use.
6. Connections should be secure to resist accidental disconnection and should maintain sterility, when appropriate.

- Controls –

1. Device design should prevent misinterpretation of displays and control settings.
2. Switches and controls should be protected against accidental setting changes (i.e., due to false card reading or weather conditions).
3. Controls should be protected against penetration of liquids.

- Labeling –

1. Labels and markings should be clear and legible.
2. Labels and markings should be durable enough to withstand routine cleaning and normal wear.
3. Appropriate warning labels should be provided on the equipment.

Lincoln Entrances

1a – West Entrance, Bldg. #1 (1st Floor – main entrance, glass front door)

3a – Southeast Entrance, Bldg. #3 (Basement, Boiler Plant, Metal door)

3b – Northeast Entrance, Bldg. #3 (Basement, Garage Office, Metal door)

3c – Northwest Entrance, Bldg. #3 (Basement, Garage Bay, Metal door)

3b – Northeast Entrance, Bldg. #3 (Basement, Dock, Sliding glass doors)

4a – East Entrance, Bldg. #4 (Basement, Metal door)

4b – North Entrance, Bldg. #4 (Basement, Automatic metal door)

40a – East Entrance, Bldg. #40 (1st Floor, Metal door, used as exit only)

40b – North Entrance, Bldg. #40 (1st Floor, Double metal doors, Used as exit only)

45a – Southeast Entrance, Bldg. #45 (Basement, Revolving glass door)

45b – East Center Entrance, Bldg. #45 (Basement, Double glass sliding doors)

45c – Northeast Entrance, Bldg. #45 (Basement, Double glass doors)

*Used mainly as a fire exit door – Located down the stairs from the main entrance and is chained off the majority of the time.

HOSPITAL FACILITY

Main Hospital
Canteen, Mental Health Clinic
Auditorium, Chapel, Voluntary
Offices

ground floor -
Acquisition, Material Management
Fiscal
1st floor -
Network offices

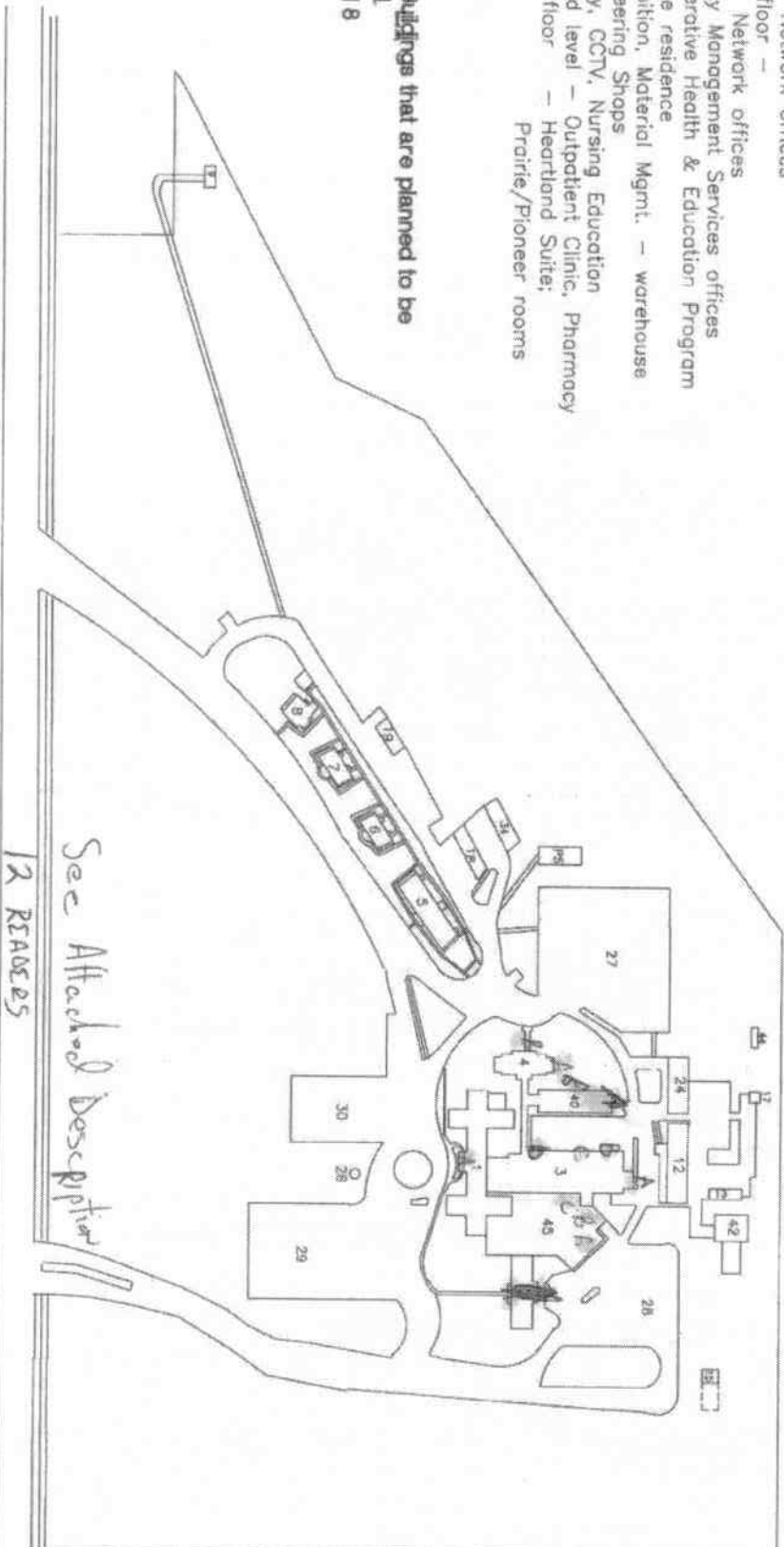
2nd floor -
Network offices
Facility Management Services offices
Cooperative Health & Education Program
Private residence
Acquisition, Material Mgmt. - warehouse
Engineering Shops
Library, CCTV, Nursing Education
Ground level - Outpatient Clinic, Pharmacy
First floor - Heartland Suite,
Prairie/Pioneer rooms

2-ARES - Buildings that are planned to be
demolished
1, 6, 7, and 8

V.A. GREATER HEALTH SYSTEM 600 SOUTH 70TH STREET LINCOLN, NEBRASKA 68510

ADDITIONAL

26 Flagpole
27 North parking lot
PS with Handicapped Parking
28 Picnic Shelter
29 Patient Parking Lot
30 General Handicapped Parking
General Parking



70TH STREET

See Attached Description
12 REARERS

A

B

C

D

E

F

1

2

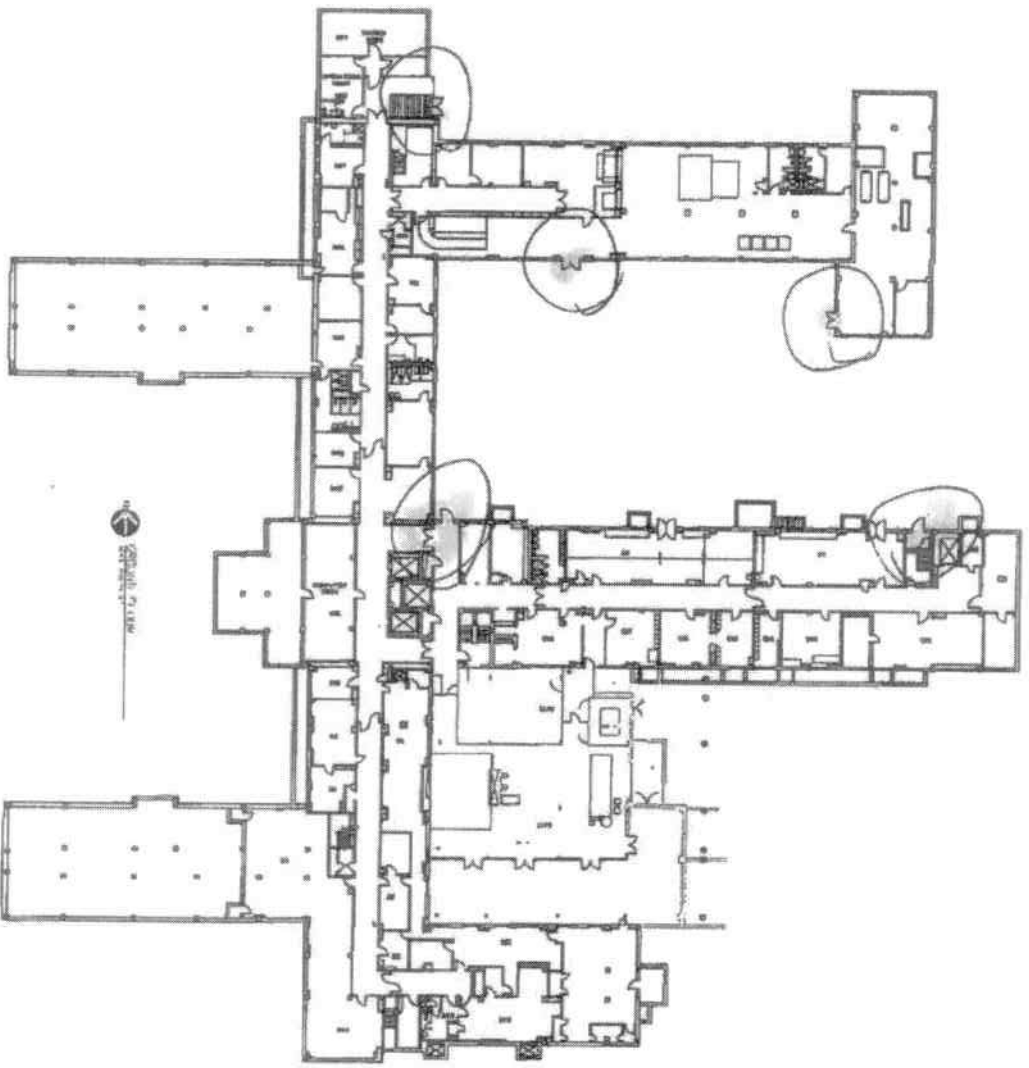
3

Grand Island

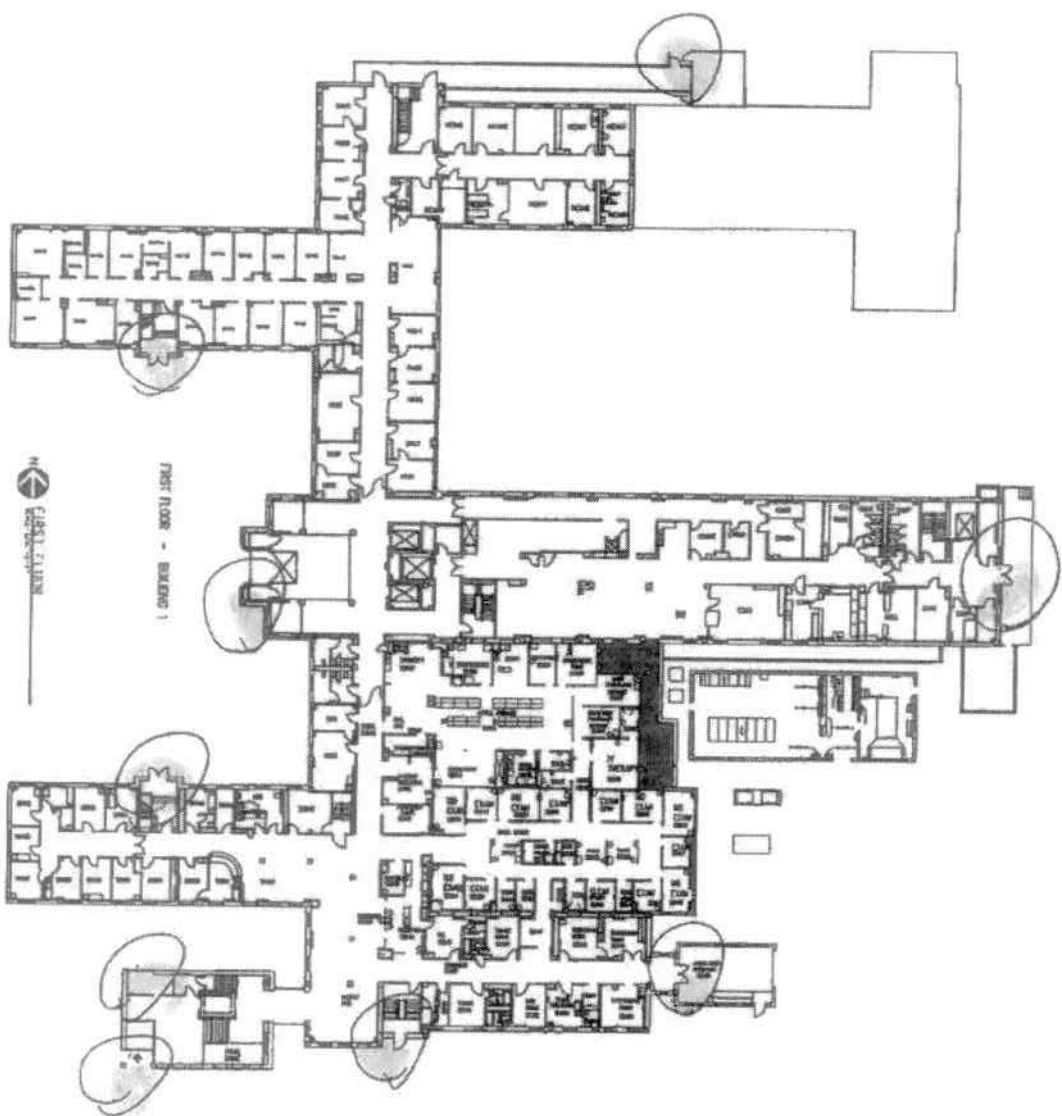
- 1.) Front entrance West side bldg.#1/Glass door
- 2.) 1st floor SW exit bldg.#1/Glass door
- 3.) South handicap exit leading into the healing garden/Motion censored glass sliding door.
- 4.) South handicap entrance bldg.#1/Motion censored sliding glass door.
- 5.) South stairwell door bldg.#1/Glass door
- 6.) Ambulance bay door bldg.#1/Double wood doors.
- 7.) Back dock door, East side of Bldg#1/Double steel/glass
- 8.) Smoke ramp door North side bldg.#1/Glass door
- 9.) 1st floor NW exit bldg.#1/Glass door
10. East ground floor courtyard door that leads into laundry/Half metal/glass
11. Courtyard door that leads into laundry/Double doors half metal/glass
12. Morgue lift door North side bldg.#1. Double metal doors
13. Ground floor door that goes into the courtyard/Half metal/glass
14. Ground floor stairwell exit that goes into the courtyard/Half metal/glass

Grand Island - Grand Floor

GI Page 2
(5)



(9)



Grand Island - 1st Floor

GI Page 1
(9)