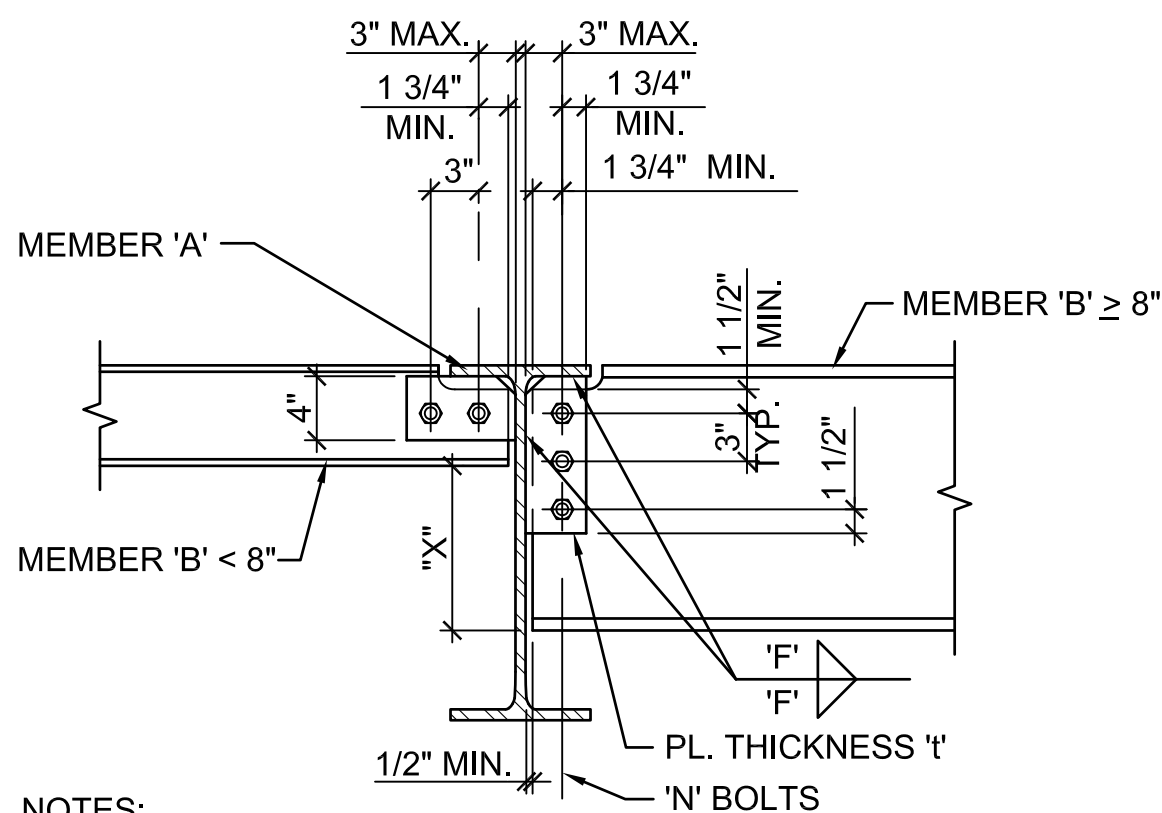
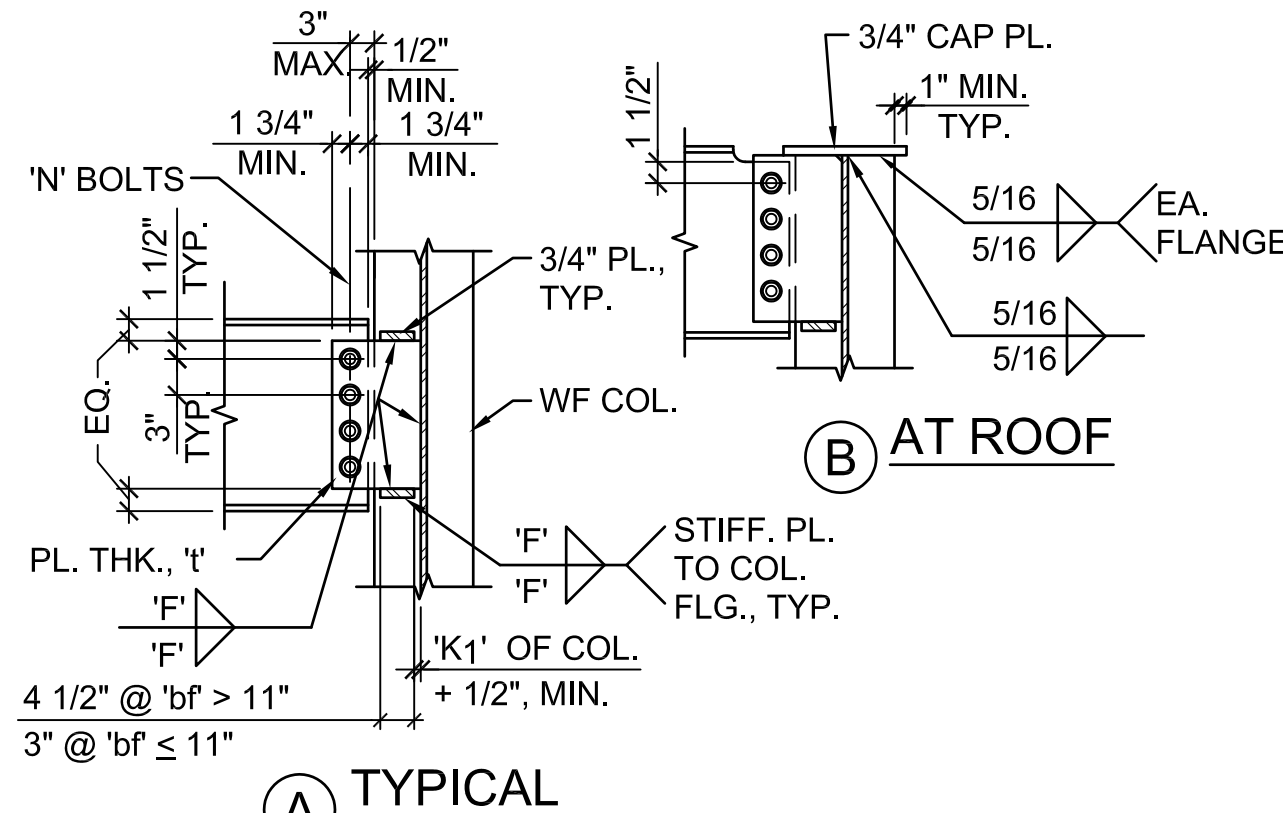


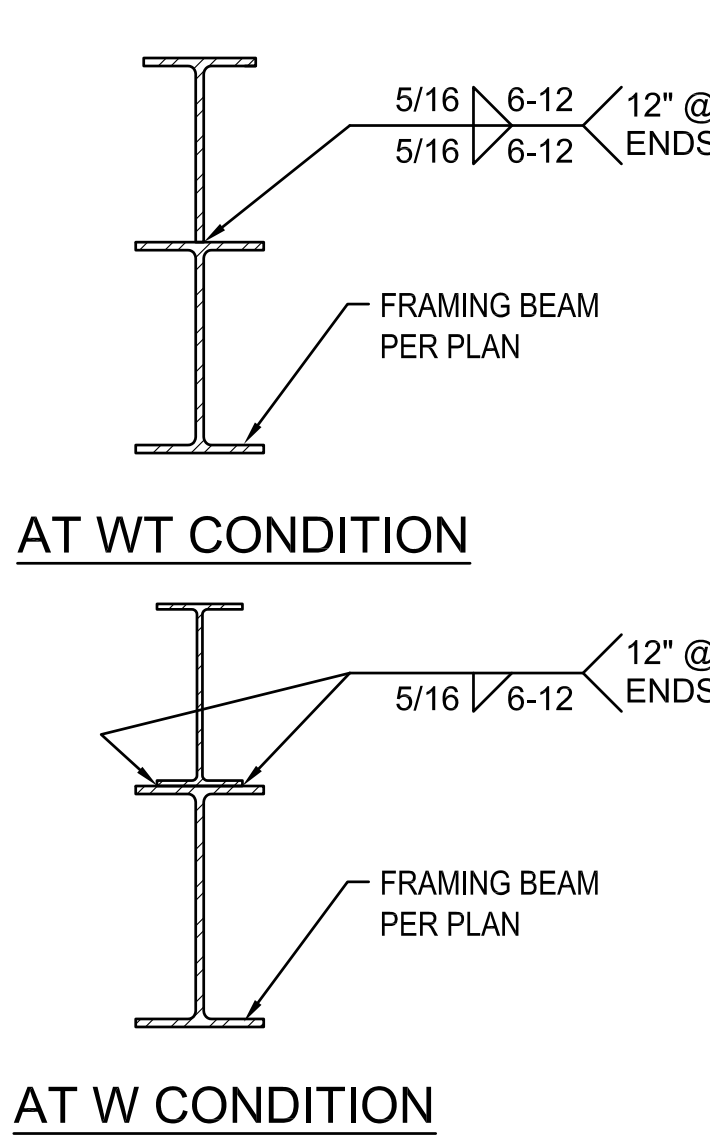
three inches = one foot  
one and one half inches = one foot  
one inch = one foot  
three quarters inch = one foot  
one half inch = one foot  
three eighths inch = one foot  
one quarter inch = one foot  
one eighth inch = one foot  
one sixteenth inch = one foot



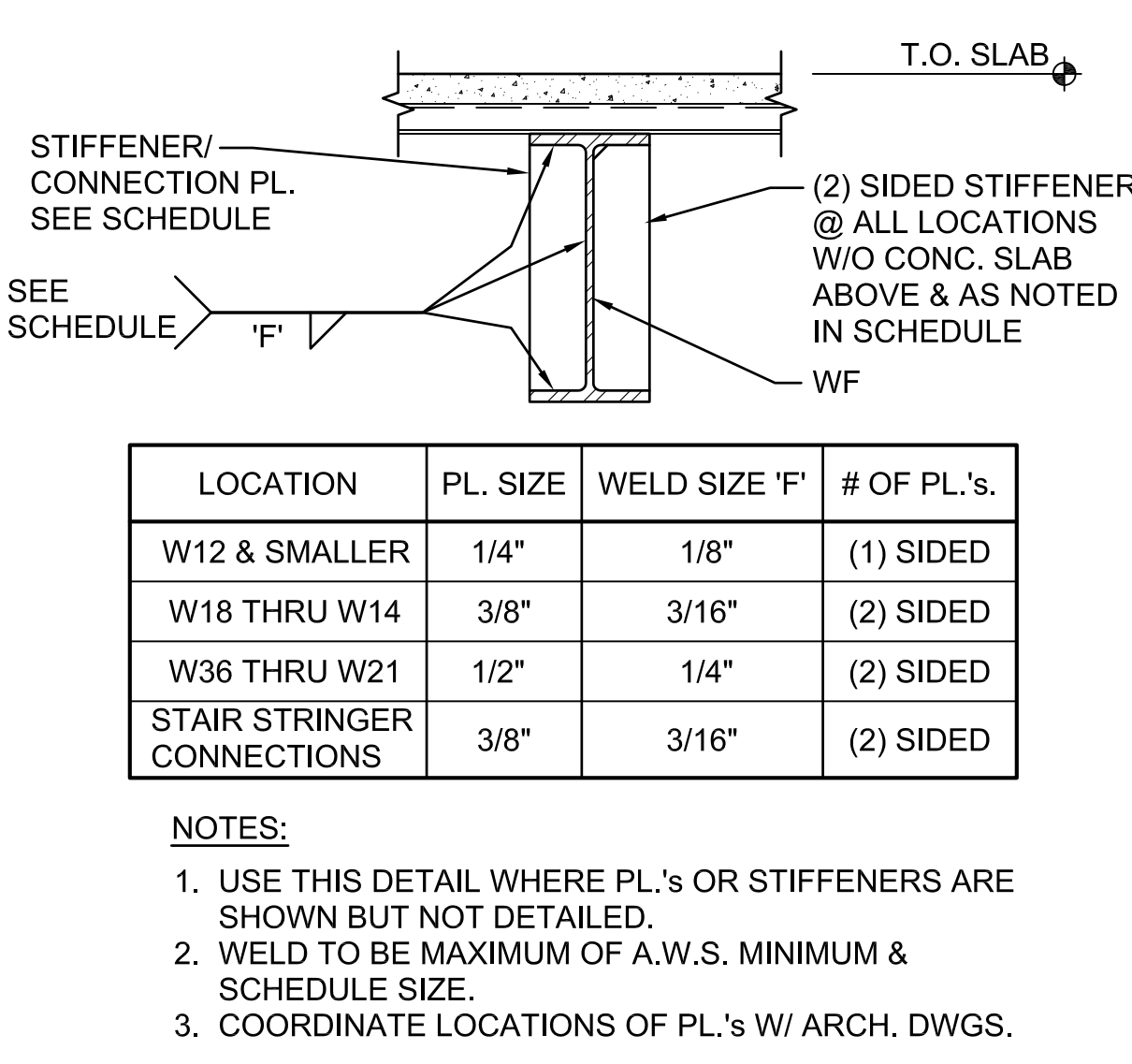
13 BM. TO BM. CONNECTION  
MEMBER 'A' > MEMBER 'B'  
N.T.S.



10 WF TO WEAK WAY WF  
COLUMN CONNECTION  
N.T.S.



7 FILLER BEAM  
ABOVE FRAMING BEAM  
N.T.S.

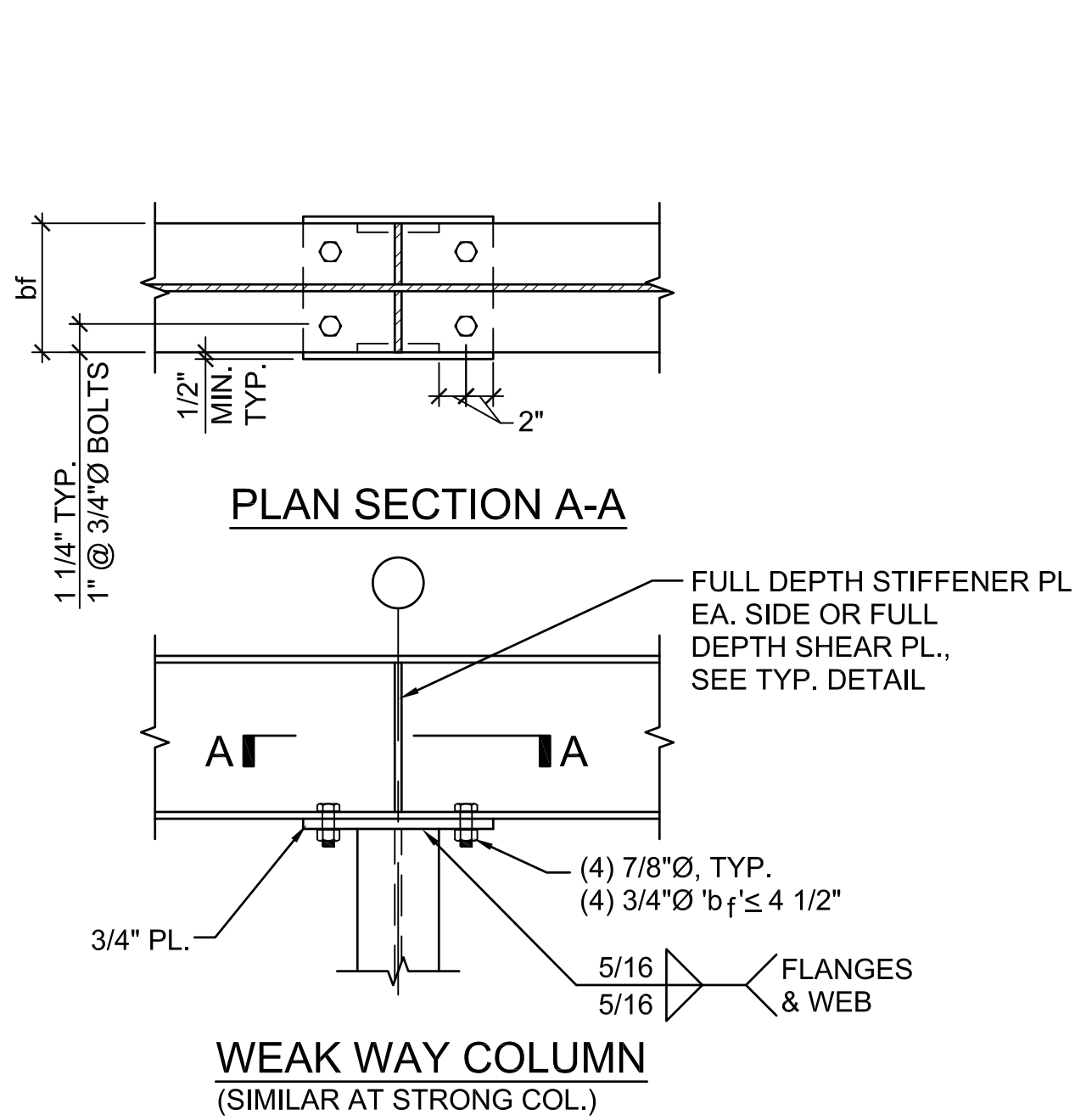


4 STIFFENER CONNECTION PLATE  
N.T.S.

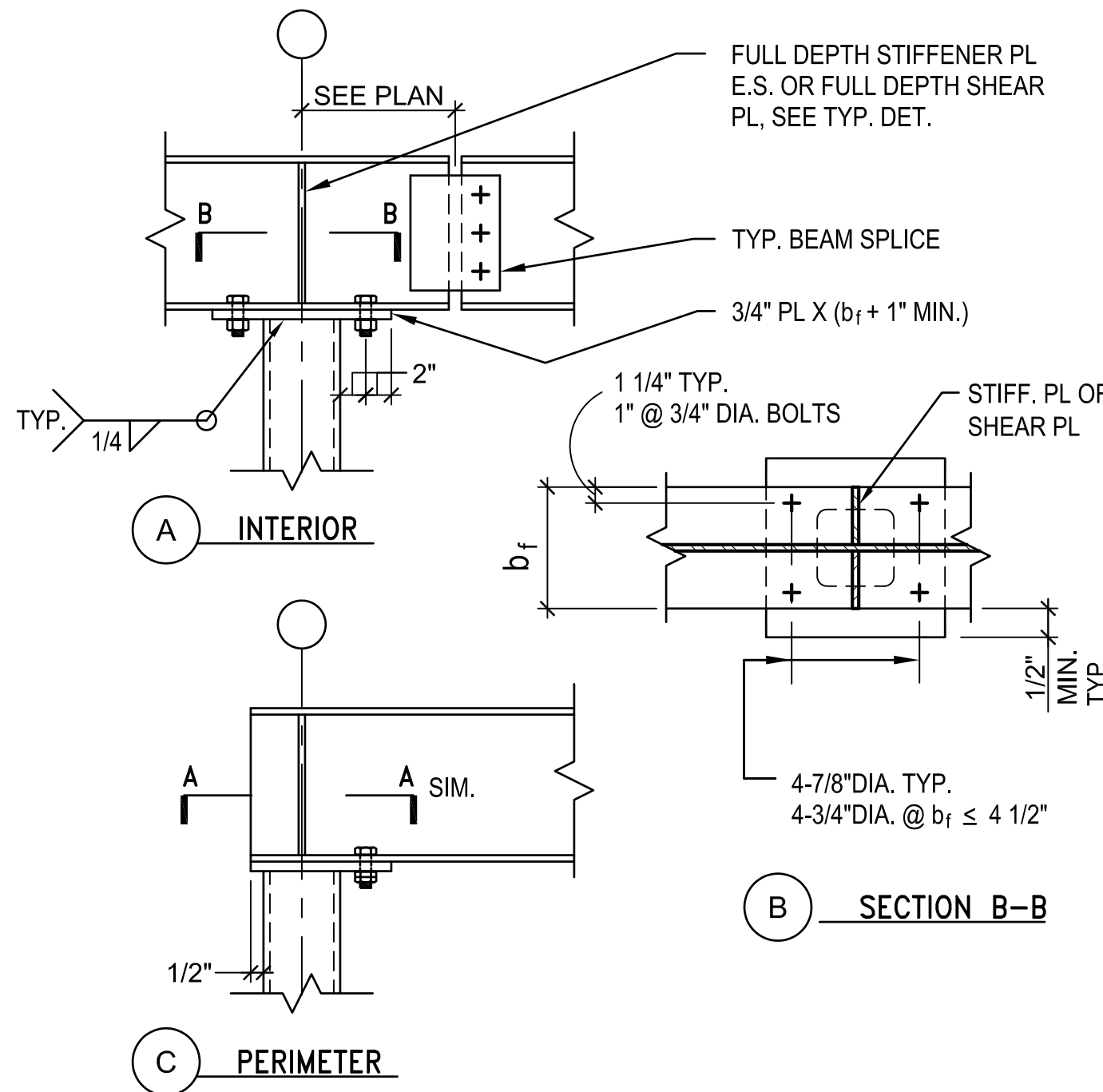
BEAM CONNECTION SCHEDULE				
NOMINAL MEMBER DEPTH	SHEAR PL. THICKNESS ('t')	FASTENERS A325-X U.O.N. ('N')	WELD SIZE ('F')	REMARKS
LESS THAN 12"	3/8"	(2) 7/8"Ø	5/16"	
12" THRU 14"	3/8"	(3) 7/8"Ø	5/16"	
16" THRU 18"	1/2"	(4) 7/8"Ø	3/8"	
21"	1/2"	(5) 7/8"Ø	3/8"	
24"	1/2"	(6) 7/8"Ø	3/8"	
27"	1/2"	(7) 7/8"Ø	3/8"	
30"	1/2"	(8) 7/8"Ø	3/8"	
33"	1/2"	(9) 7/8"Ø	3/8"	
36"	1/2"	(10) 7/8"Ø	3/8"	
40"	1/2"	(11) 7/8"Ø	3/8"	

- NOTES:
- BOLT HOLES TO BE STD. HOLES 1/16" GREATER THAN BOLT DIAMETER, SHORT SLOTTED HOLES IN SHEAR PLATE MAY BE USED ONLY WHERE NOTED.
  - BOLTS TO BE FULLY PRETENSIONED W/ HARDENED WASHERS, U.O.N. IN 2ND ROW AS SHOWN.
  - SCHEDULE BASED ON NOMINAL DEPTH OF WIDE FLANGE BEAMS, CHANNELS, TUBES, & OTHER MISCELLANEOUS SHAPES.

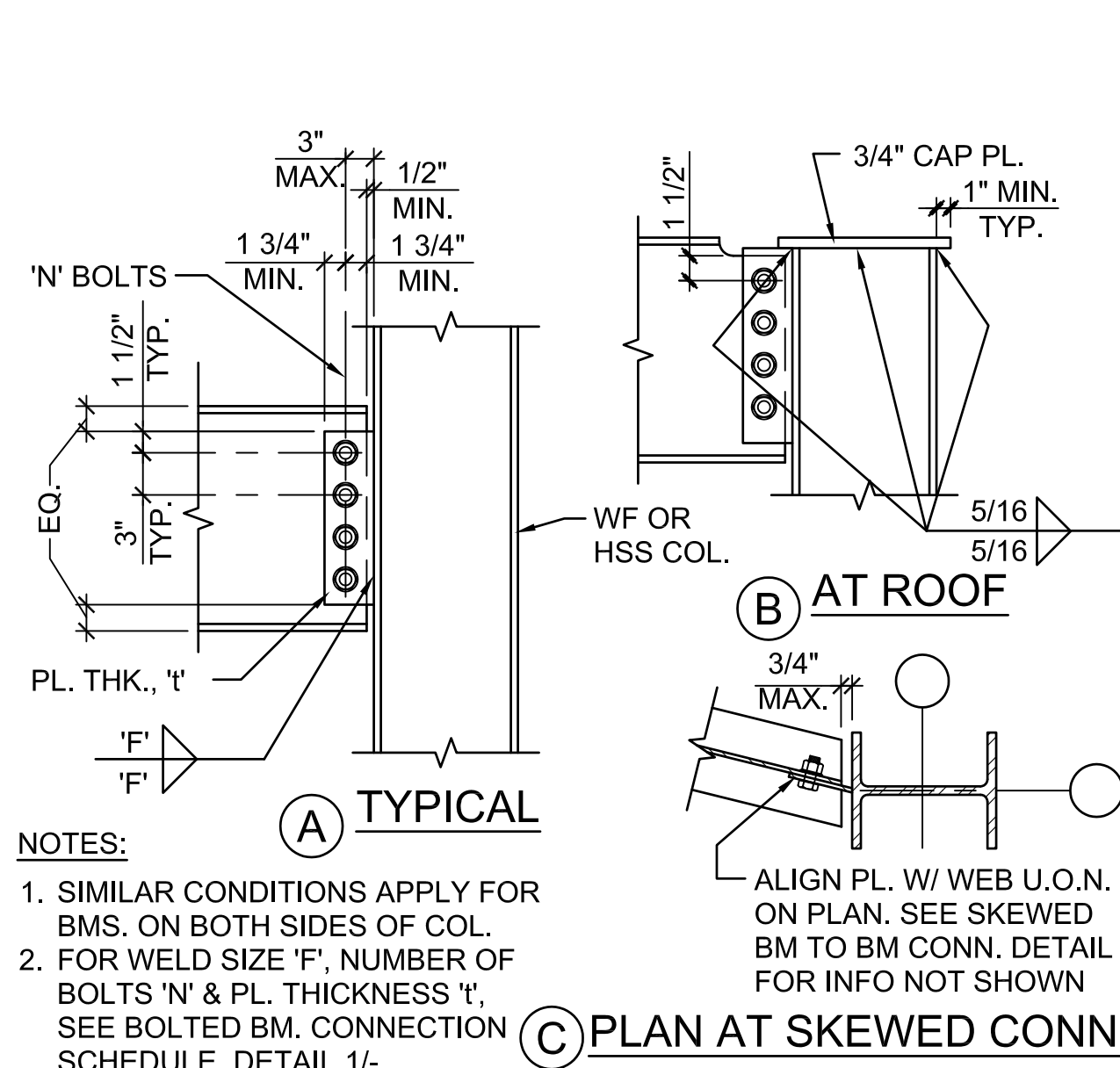
1 BOLTED BM. CONN. SCHEDULE  
N.T.S.



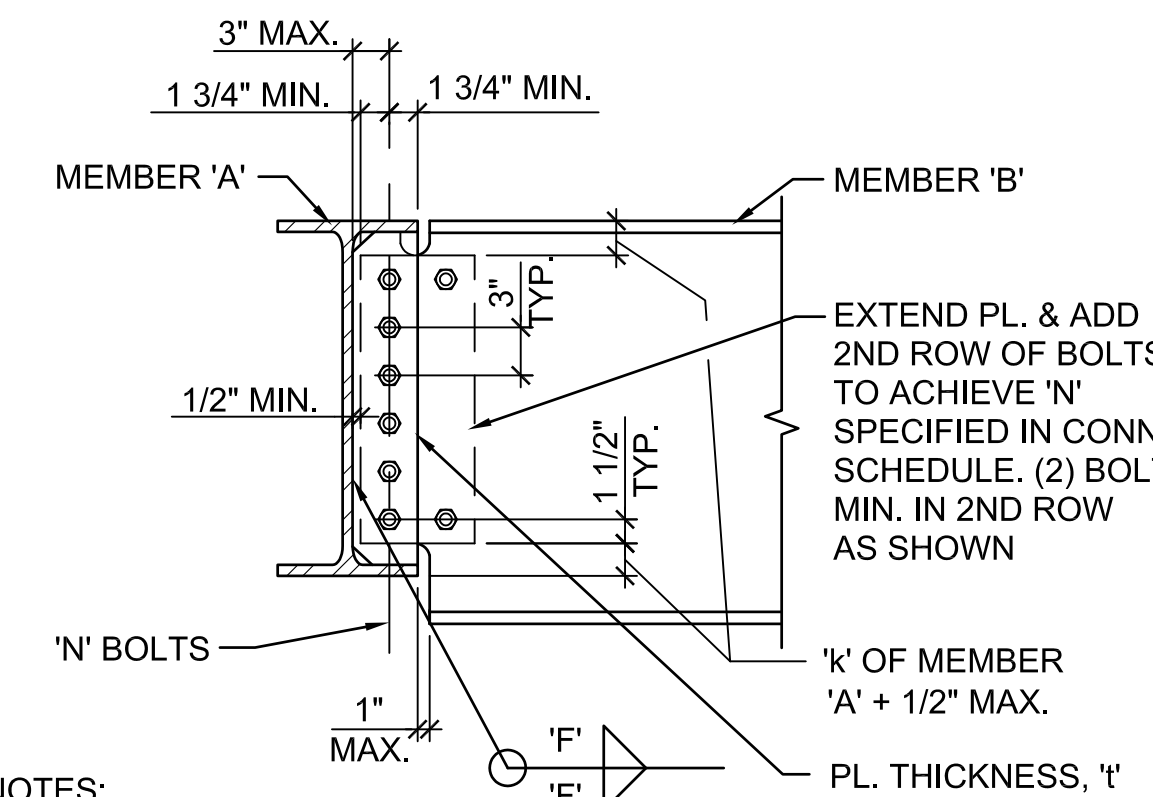
11 SEATED WF BEAM TO WF COL.  
N.T.S.



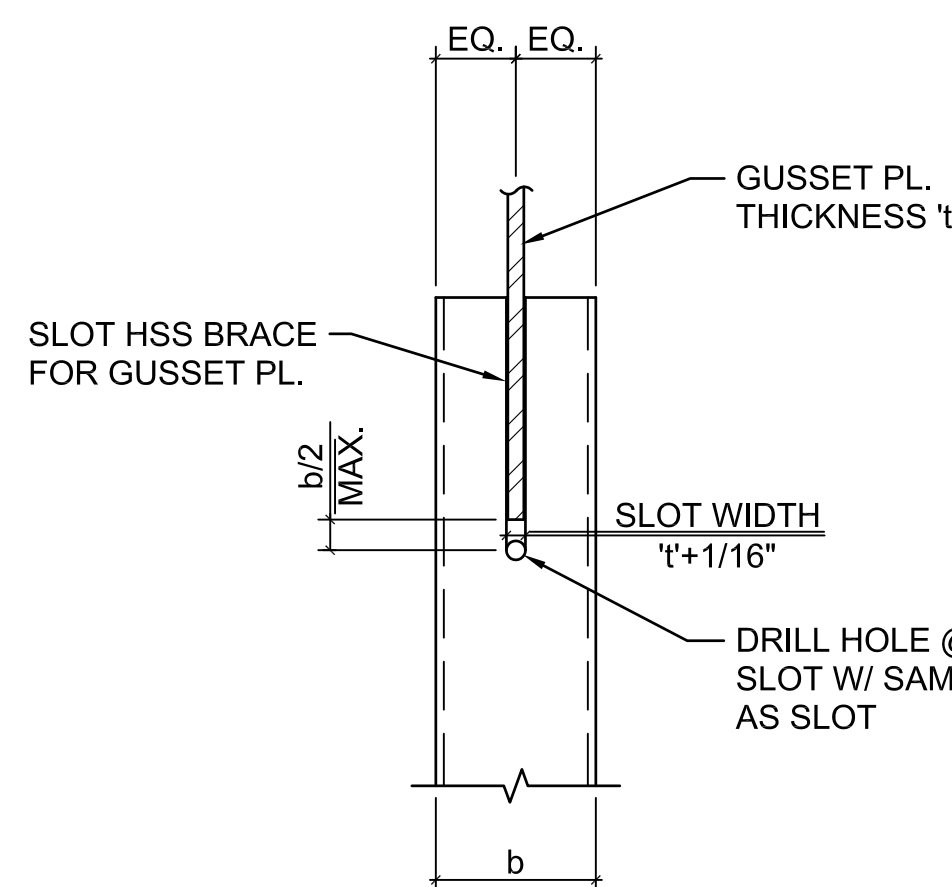
8 SEATED WF TO HSS COLUMN  
N.T.S.



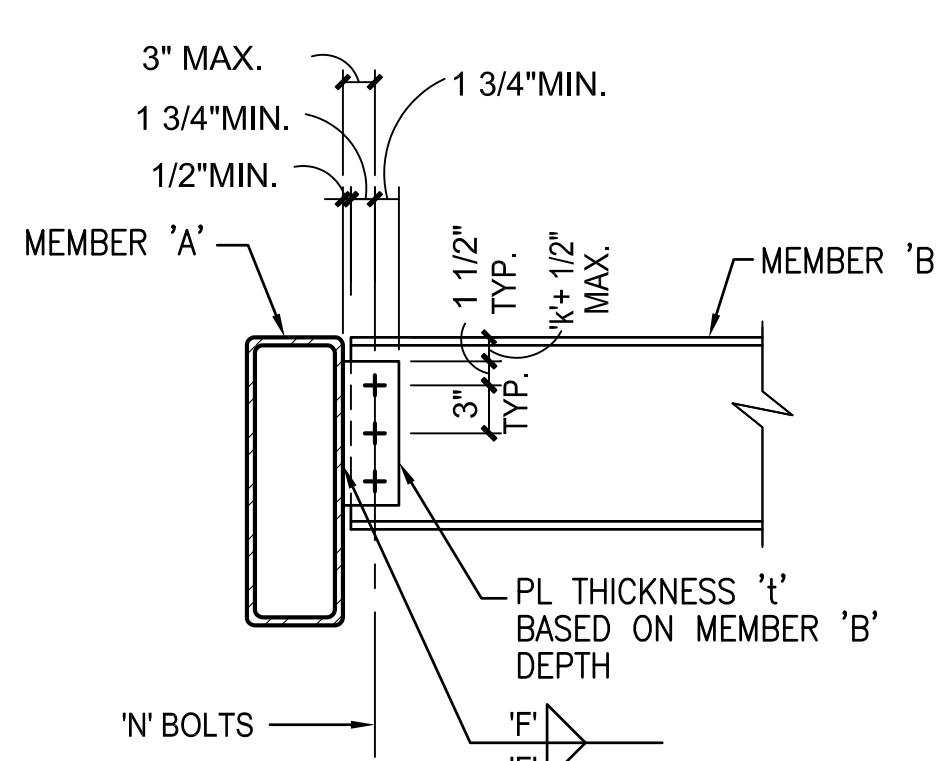
5 WF TO STRONG WAY  
WF OR HSS COLUMN  
N.T.S.



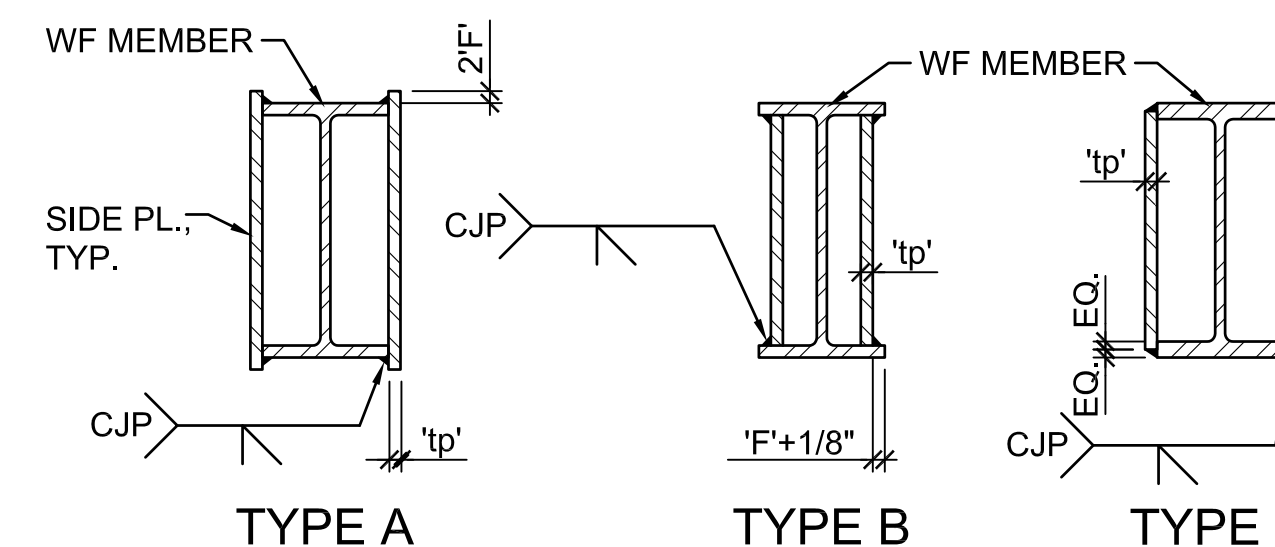
2 BM. TO BM. CONNECTION  
MEMBER 'A' ≤ MEMBER 'B'  
N.T.S.



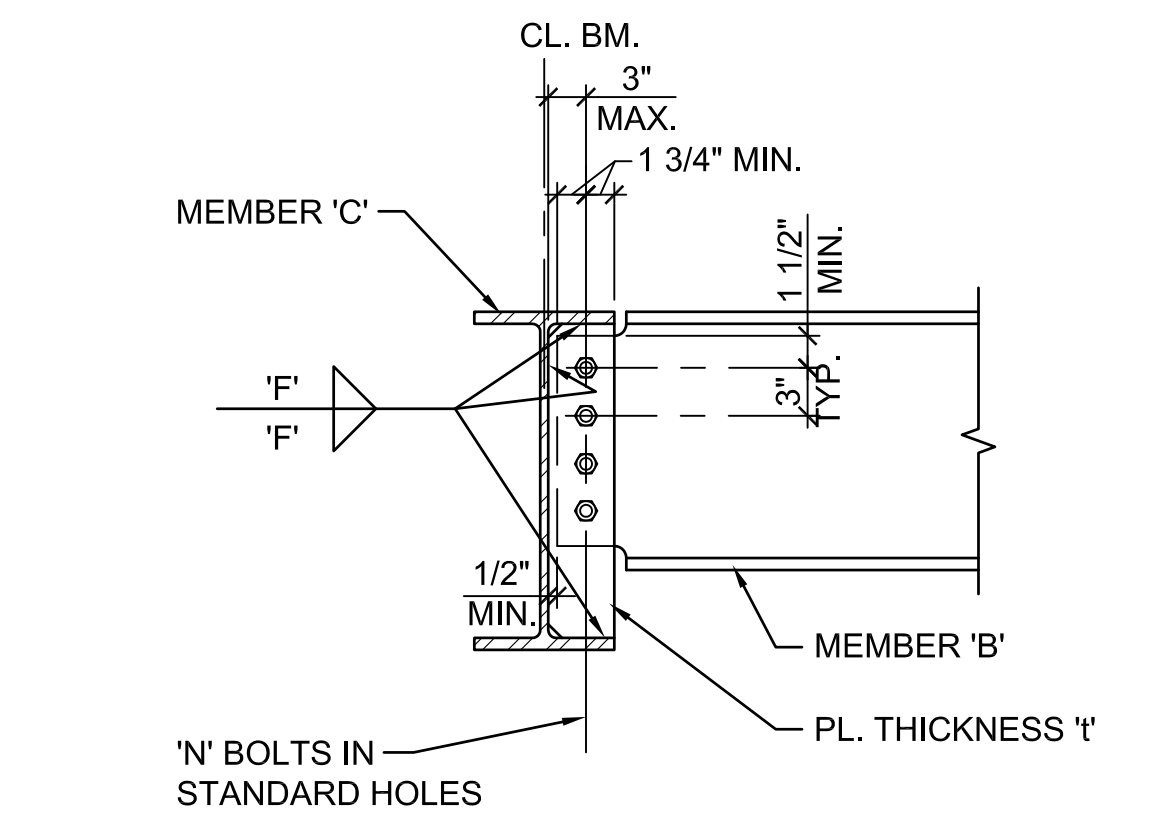
12 HSS SLOT DETAIL  
N.T.S.



9 WF TO HSS BEAM CONNECTION  
N.T.S.



6 BUILT-UP SECTIONS  
N.T.S.



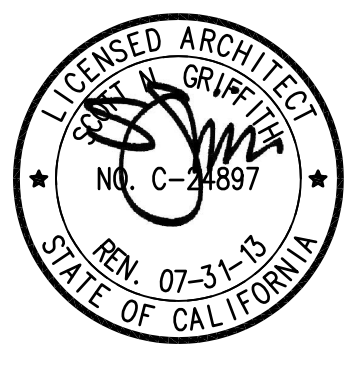
3 FULL DEPTH CONNECTION  
MEMBER 'B' > W10  
N.T.S.

Revisions	Date
2	7/25/13
1	7/22/13

CONSULTANTS:  
**Degenkolb**  
DEGENKOLB ENGINEERS  
235 Montgomery Street, Suite 500  
San Francisco, CA 94104  
415.392.6952 Phone  
415.544.0762 Fax  
www.degenkolb.com  
80584020.00



ARCHITECT/ENGINEERS:  
**HMC Architects**  
1827 E. Fir Avenue, Studio 103 / Fresno, CA 93720  
T 559.322.2444 / www.hmcarchitects.com



Drawing Title  
**TYPICAL STEEL DETAILS**  
Approved Project Director

Project Title  
**BUILDING 24  
SEISMIC CORRECTION  
AND ADDITION**  
Location  
**VAMC FRESNO, CA**  
Date  
**March 12, 2013**  
Checked  
**WG**  
Drawn  
**MAM/KM**

Project Number  
**570-215**  
Building Number  
**24**  
Drawing Number  
**SS111**  
Dwg. 7 of 176

Office of  
Construction  
and Facilities  
Management  
Department of  
Veterans Affairs