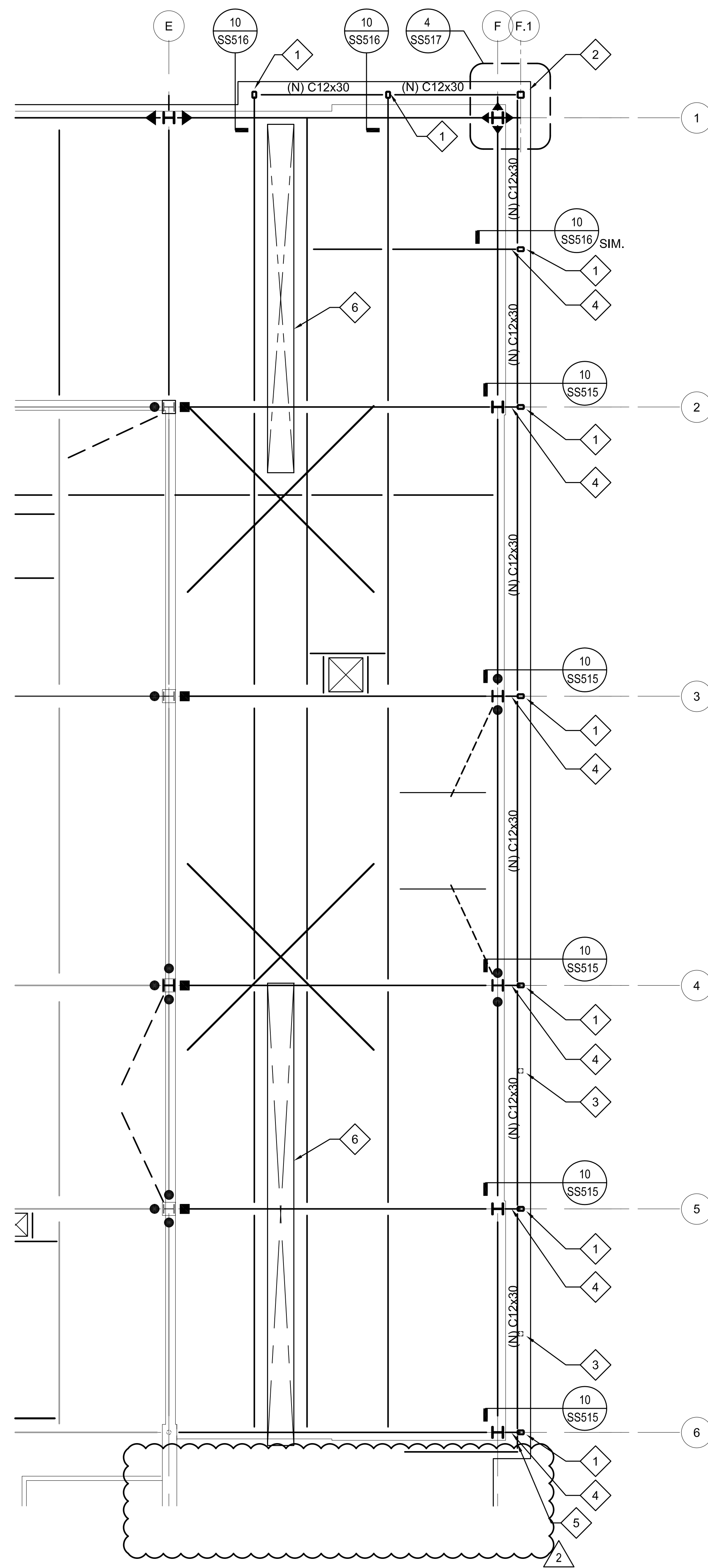


three inches = one foot  
one and one half inches = one foot  
one inch = one foot  
three quarters inch = one foot  
one half inch = one foot  
one quarter inch = one foot  
three eighths inch = one foot  
one eighth inch = one foot  
one sixteenth inch = one foot

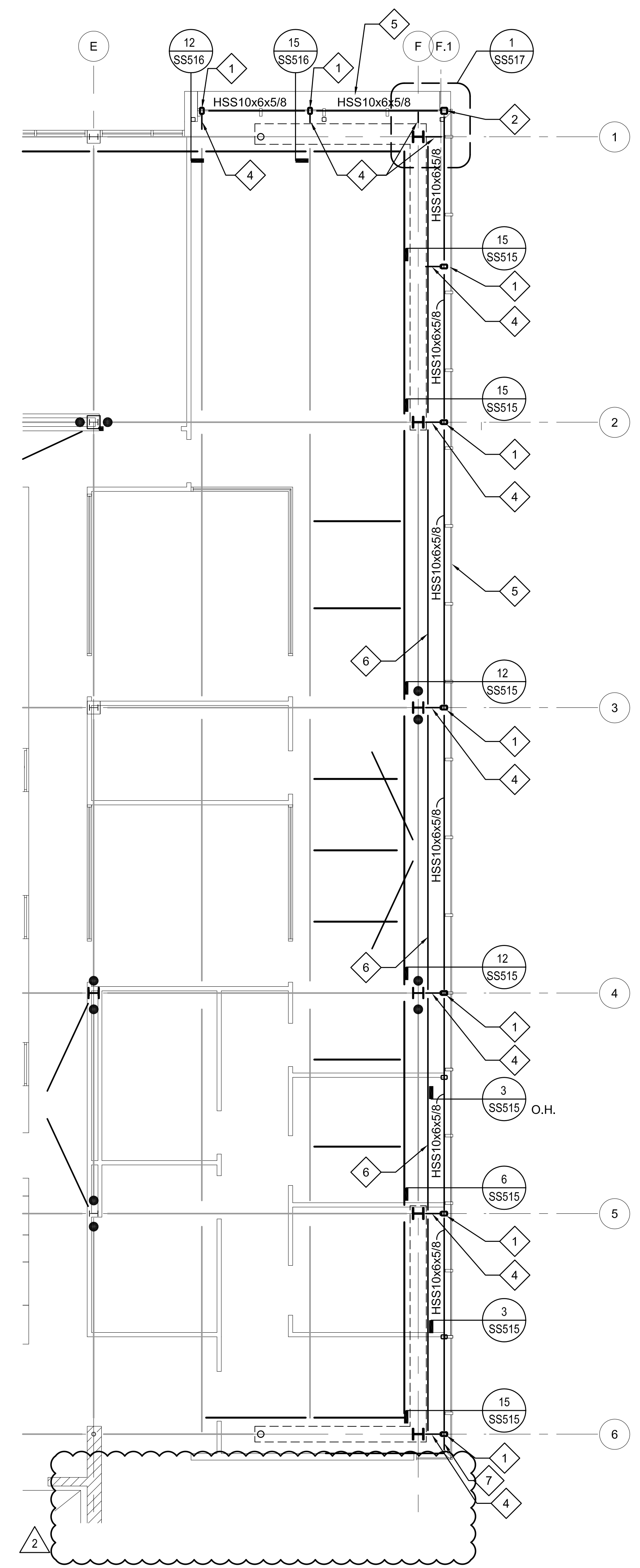


15 PARTIAL ROOF FRAMING PLAN  
3/16" = 1'-0"

KEY NOTES:

- 1 HSS6x4x1/2 VERTICAL STRUT BELOW
- 2 HSS6x6x5/8 VERTICAL STRUT BELOW
- 3 HSS 6x4x1/2 INTERMEDIATE VERTICAL STRUT BELOW
- 4 (2) MC18X45.8
- 5 (N) C12X30 W/ TYP. SHEAR CONN. EA. END, SEE TYP. DETAILS
- 6 FOR EXTENTS OF SKYLIGHTS, S.A.D.

NOTES:  
1. FOR BALANCE OF INFORMATION, SEE 1/SF204



6 PARTIAL THIRD FLOOR FRAMING PLAN  
3/16" = 1'-0"

KEY NOTES:

- 1 HSS6x4x1/2 VERTICAL STRUT
- 2 HSS6x6x5/8 VERTICAL STRUT
- 3 HSS6x4x1/2 INTERMEDIATE VERTICAL STRUT ABOVE
- 4 (2) C12x25
- 5 DESIGN/BUILD CURTAIN WALL BY OTHERS
- 6 (N) C12X30 W/ TYP. SHEAR CONN. EA. END, SEE TYP. DETAILS
- 7 (N) C10X30 W/ TYP. SHEAR CONN. EA. END, SEE TYP. DETAILS

NOTES:  
1. FOR BALANCE OF INFORMATION, SEE 1/SF204

<div>Revisions</div> <table><tr><td>2</td><td></td></tr><tr><td>1</td><td></td></tr></table>		2		1	
2					
1					