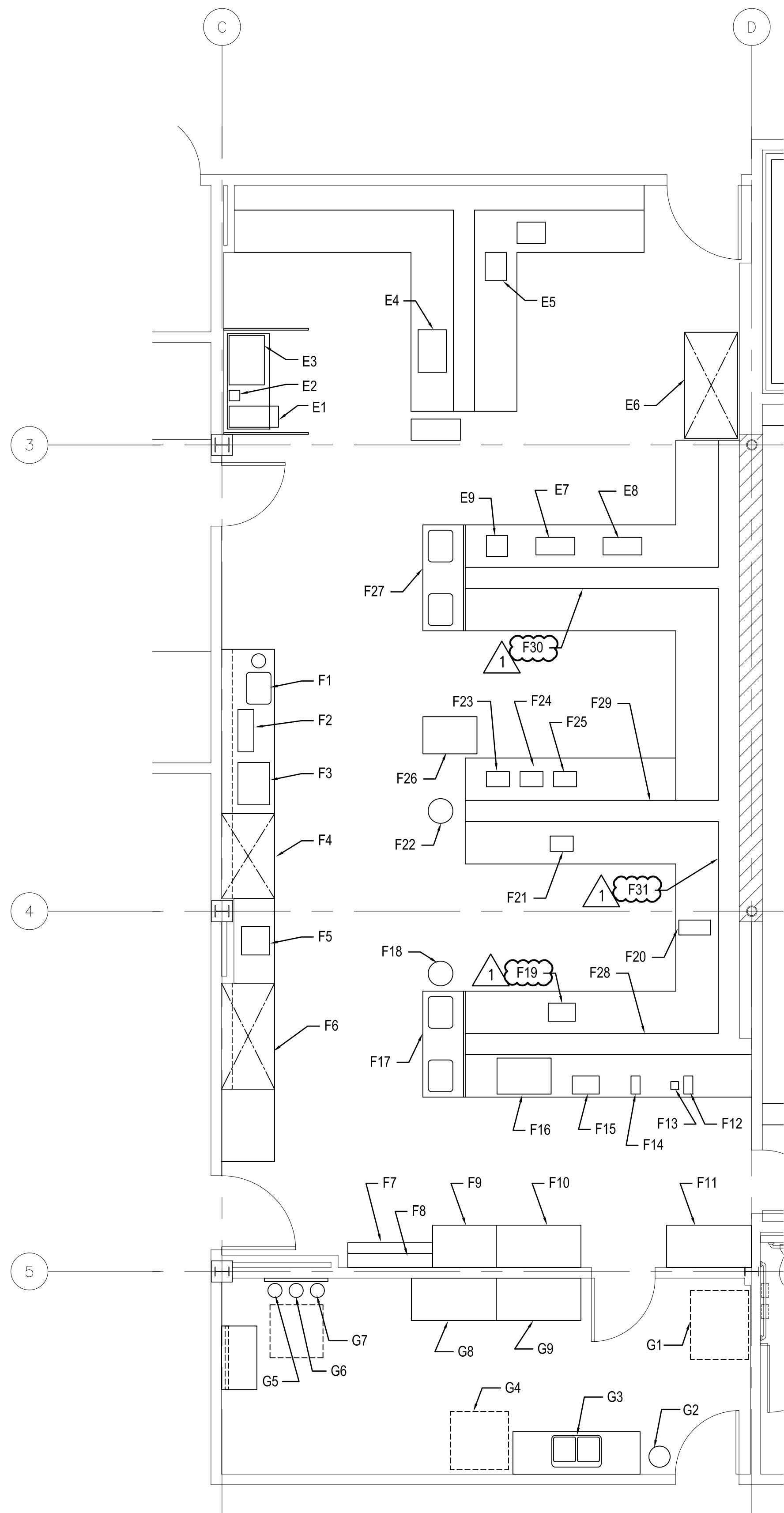
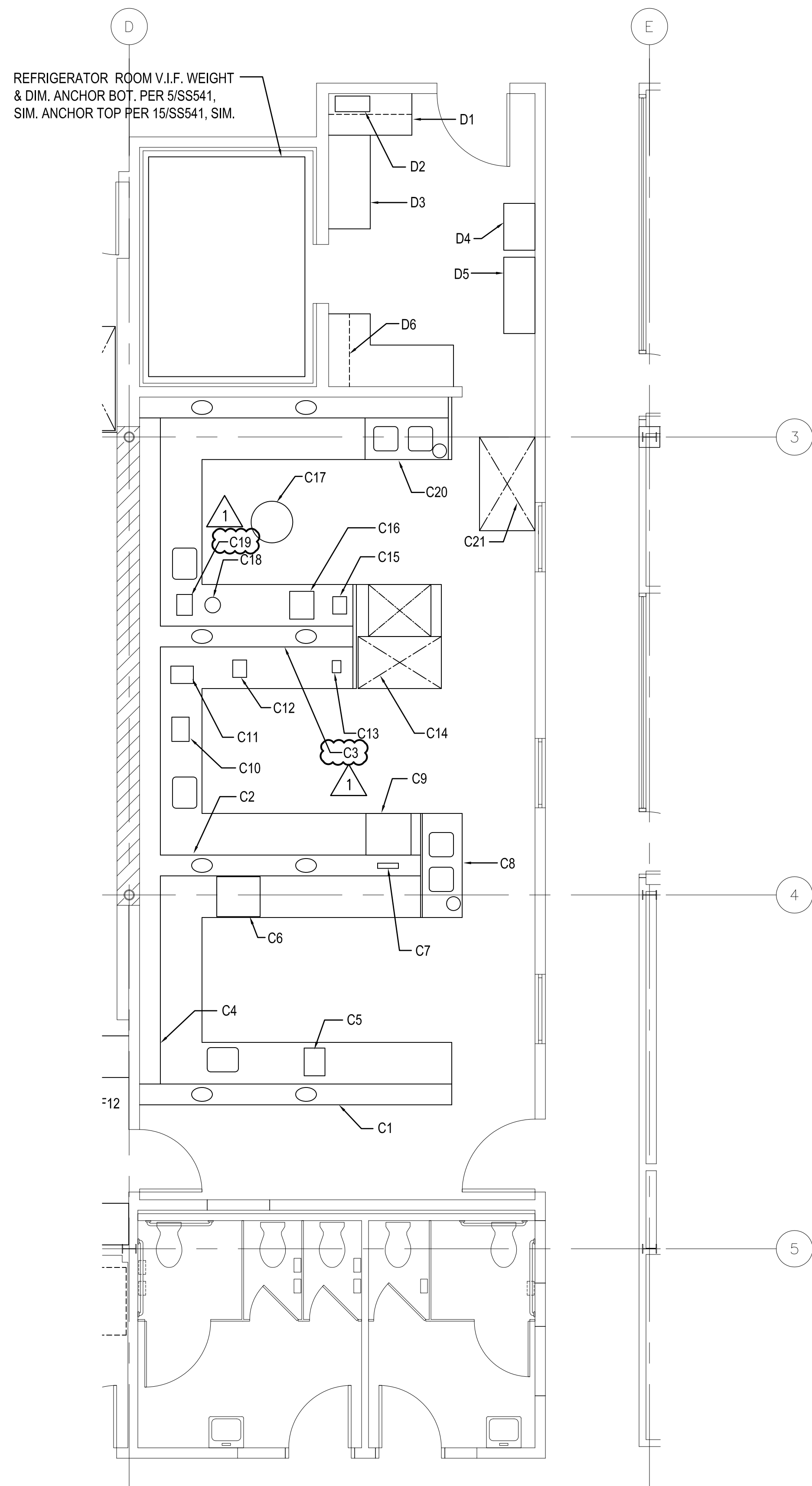


three inches = one foot
one and one half inches = one foot
one inch = one foot
three quarters inch = one foot
one half inch = one foot
one quarter inch = one foot
three eighths inch = one foot
one eighth inch = one foot
one sixteenth inch = one foot



2 PARTIAL 3RD FLOOR NON-STRUCTURAL PLAN
1/4" = 1'-0"



1 PARTIAL 3RD FLOOR NON-STRUCTURAL PLAN
1/4" = 1'-0"



SHEET NOTES:

- FOR EQUIPMENT SCHEDULE & ANCHORAGE / BRACING REQUIREMENTS, SEE SHEET SS532.
- CONTRACTOR TO REVIEW LAB SPACES. MODIFY BRACING/ANCHORAGE DETAILS AS NECESSARY BASED ON CURRENT EQUIPMENT LAYOUT.
- CONTRACTOR TO VERIFY HAZARDOUS MATERIALS CONTENT PRIOR TO STARTING BRACING/ANCHORAGE WORK. NOTE THAT BLACK COUNTER TOPS DO CONTAIN ASBESTOS. CONTRACTOR TO SUBMIT METHOD/PLAN OF ATTACHMENT FOR REVIEW/APPROVAL BY THE VA.

CONSULTANTS:



DEGENKOLB ENGINEERS
235 Montgomery Street, Suite 500
San Francisco, CA 94104
415.392.6952 Phone
415.544.0762 Fax
www.degenkolb.com
80584020.00

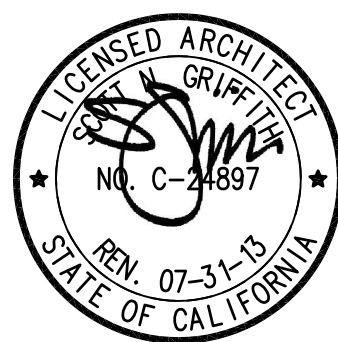
7/25/18
7/22/18
Date



ARCHITECT/ENGINEERS:



1827 E. Fir Avenue, Studio 103 / Fresno, CA 93720
T 559 322 2444 / www.hmcarchitects.com



Drawing Title
THIRD FLOOR NON-STRUCTURAL
ENLARGED PLANS

Approved Project Director

Project Title
BUILDING 24
SEISMIC CORRECTION
AND ADDITION

Location
VAMC FRESNO, CA

Date
March 12, 2018

Checked
WG

Drawn
MAM/KM

Project Number
570-215

Building Number
24

Drawing Number

SS203A
Dwg. 18 of 176

Office of
Construction
and Facilities
Management

