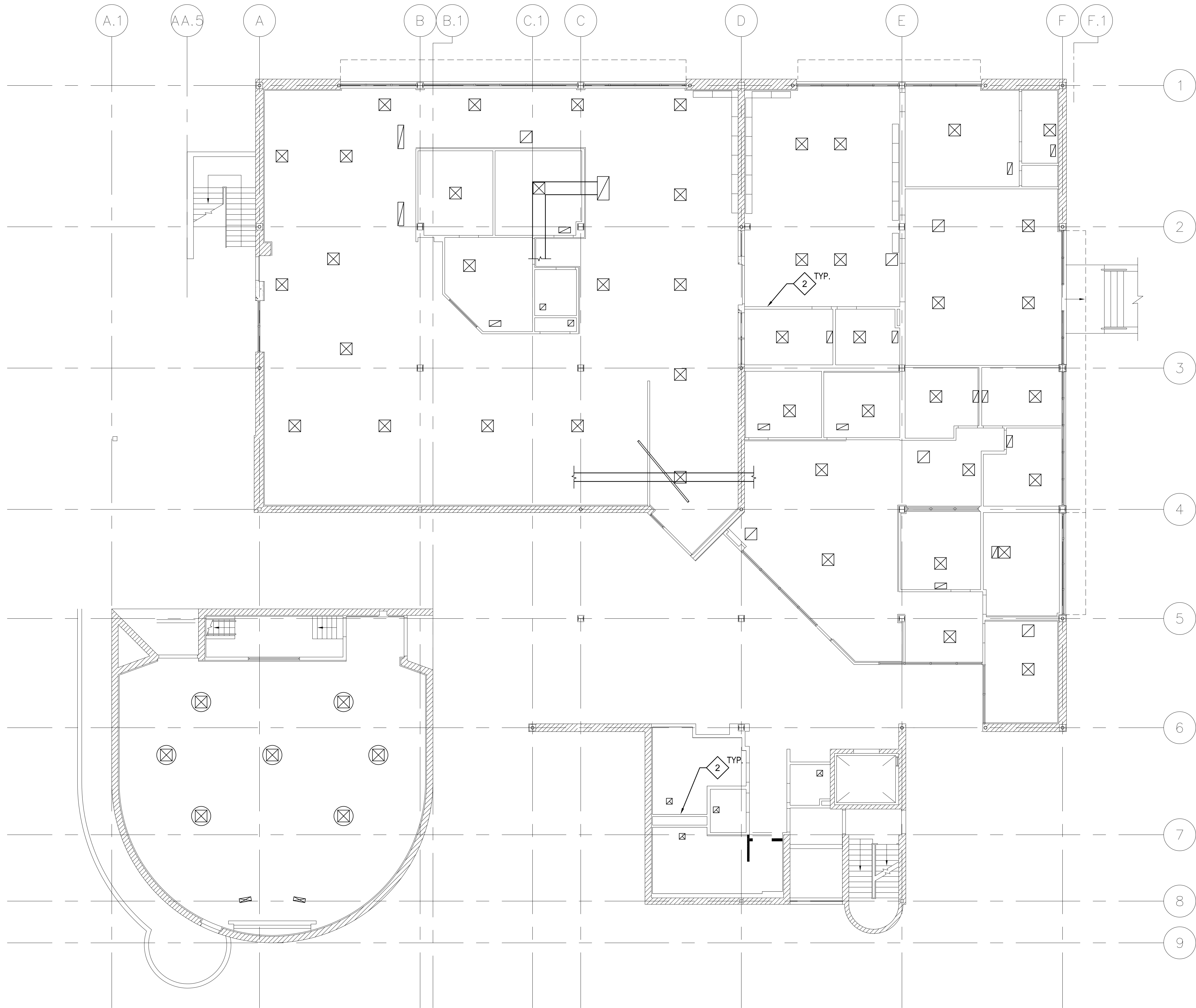


three eighths inch = one foot
one eighth inch = one foot
one quarter inch = one foot
one half inch = one foot
three quarters inch = one foot
one inch = one foot
one and one half inches = one foot
two inches = one foot
three inches = one foot



1 FIRST FLOOR CEILING SPACE PLAN
1/8" = 1'-0"

SHEET NOTES:

1. FOR EQUIPMENT SCHEDULE & ANCHORAGE / BRACING REQUIREMENTS, SEE SHEET SS532.

KEY NOTES:

- 1 FOR SCOPE OF SEISMIC ANCHORAGE / BRACING SEE PLANS & SCHEDULE SS532.
- 2 PARTITIONS THAT ARE NOT ALONG CORRIDORS ARE PARTIAL HEIGHT AND REQUIRE BRACING. CONTRACTOR TO PROVIDE BRACING PER ARCH. SHEET AS906 AND CRITERIA SET FORTH IN STRUCTURAL GENERAL NOTES.

CONSULTANTS:

Degenkolb
DEGENKOLB ENGINEERS
235 Montgomery Street, Suite 500
San Francisco, CA 94104
415.392.6952 Phone
415.544.0762 Fax
www.degenkolb.com
80584020.00

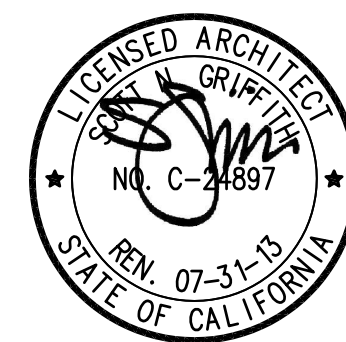
7/25/18
7/22/18
Date



ARCHITECT/ENGINEERS:

HMC Architects

1827 E. Fir Avenue, Studio 103 / Fresno, CA 93720
T 559 322 2444 / www.hmcarchitects.com



Drawing Title
**FIRST FLOOR
CEILING SPACE PLAN**

Approved Project Director

Project Title
**BUILDING 24
SEISMIC CORRECTION
AND ADDITION**

Location
VAMC FRESNO, CA

Date
March 12, 2018

Checked
WG

Drawn
MAM/KM

Project Number
570-215

Building Number
24

Drawing Number
SS301

Dwg. 19 of 176

Office of
Construction
and Facilities
Management

