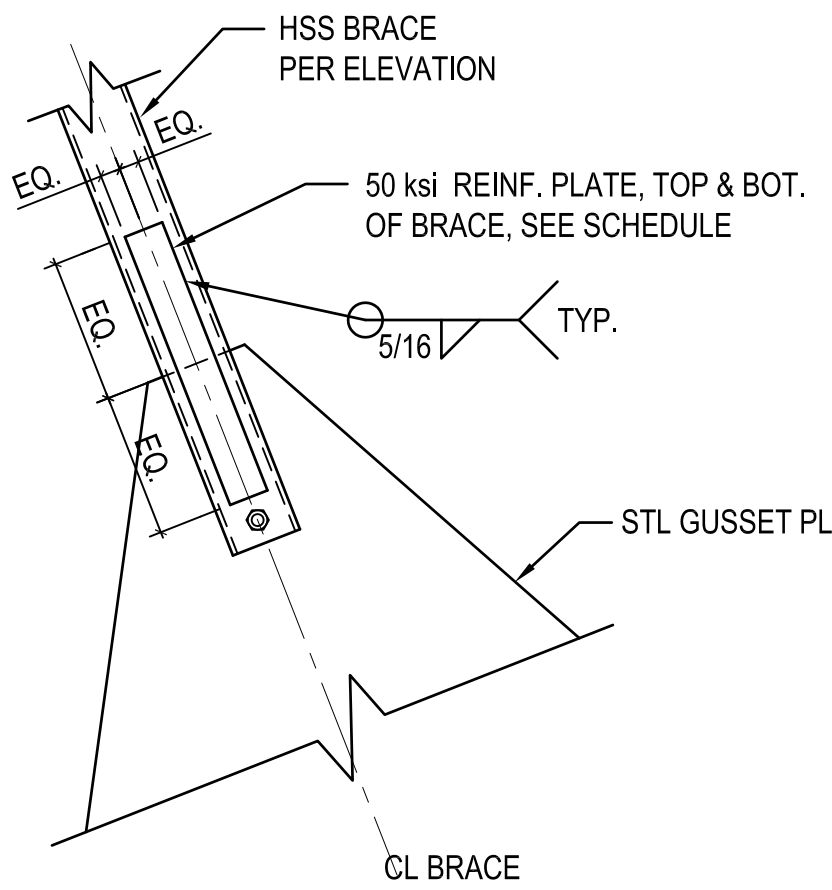


three inches = one foot  
one and one half inches = one foot  
one inch = one foot  
three quarters inch = one foot  
one half inch = one foot  
three eighths inch = one foot  
one quarter inch = one foot  
one eighth inch = one foot  
one sixteenth inch = one foot

COVER PLATE SCHEDULE	
BRACE	REINF. PLATE
HSS 4.5x4.5x5/16	3/4"x2.5"x1'-6"
HSS 10x10x5/8	1"x6"x1'-6"
PIPE 4XS	3/4"x2.5"x1'-6"
HSS 8X8X1/2 BM	1"x6"x1'-6"

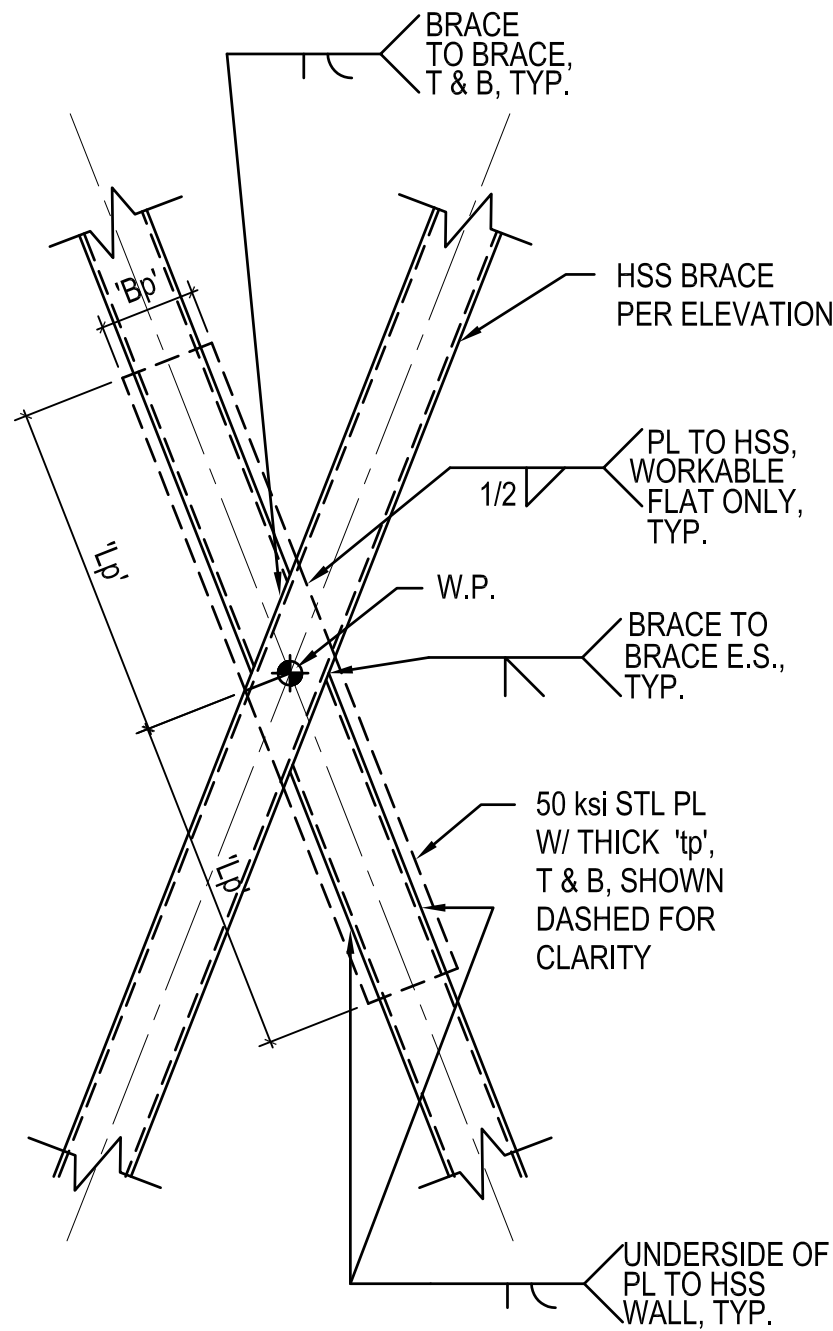


NOTES:

- SEE BRACE CONNECTION DETAILS FOR INFO NOT SHOWN.
- COVER PLATES FOR PIPE BRACE ARE TO BE BENT TO MATCH CURVATURE OF THE PIPE.
- AESS AS REQUIRED PER GENERAL NOTES.

13 BRACE COVER PLATE

N.T.S.



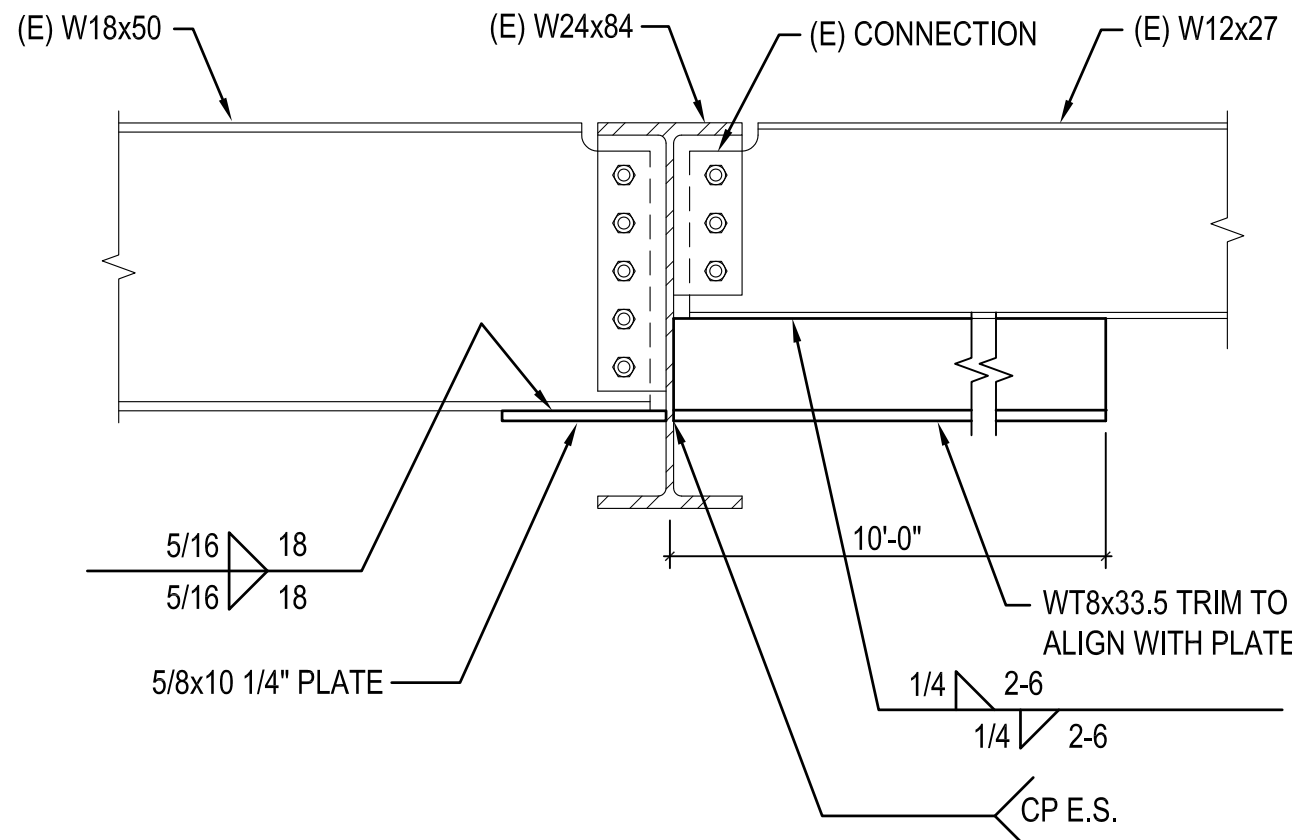
SPLICE PLATE SCHEDULE	
BRACE	SPLICE PLATE
	'Bp' 'Lp' 'tp'
HSS 4.5x4.5x5/16	6" 3'-6" 3/4"
HSS 10x10x5/8	12" 3'-6" 1"

NOTES:

- AESS AS REQUIRED PER GENERAL NOTES.

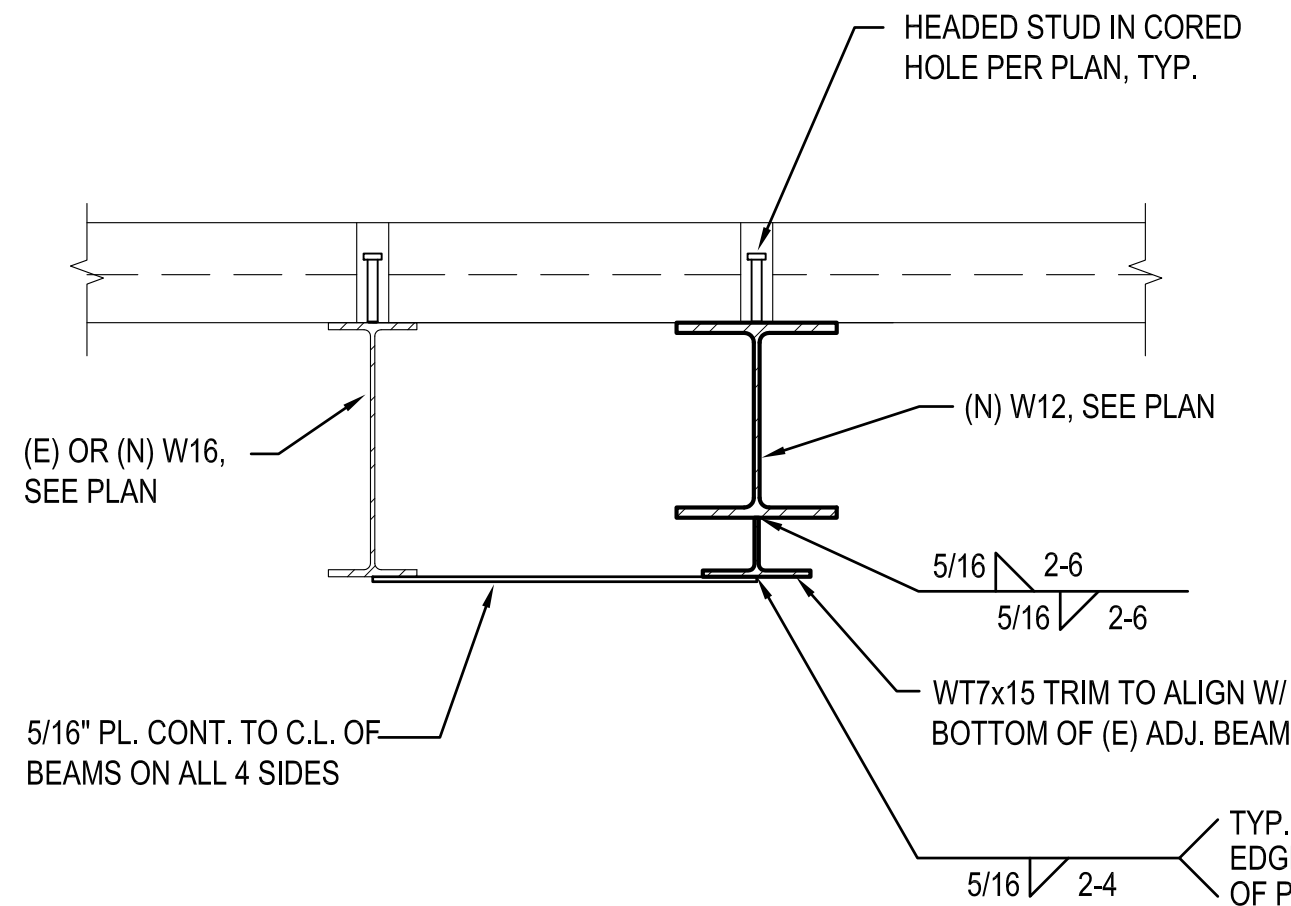
15 BRACE SPLICE PLATE

N.T.S.



1 C.1 LINE DRAG CONNECTION

1'=1'0"



2 C.1 TRANSFER PLATE

1'=1'0"

CONSULTANTS:

**Degenkolb**  
DEGENKOLB ENGINEERS  
235 Montgomery Street, Suite 500  
San Francisco, CA 94104  
415.392.6952 Phone  
415.544.0762 Fax  
www.degenkolb.com  
80584020.00

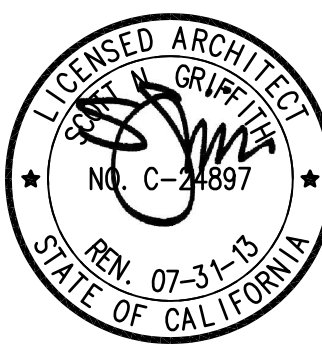
7/25/18
7/22/18
Date



ARCHITECT/ENGINEERS:

**HMC** Architects

1827 E. Fir Avenue, Studio 103 / Fresno, CA 93720  
T 559 322 2444 / www.hmcarchitects.com



Drawing Title

STEEL DETAILS

Approved Project Director

Project Title

BUILDING 24  
SEISMIC CORRECTION  
AND ADDITION

Location

VAMC FRESNO, CA

Date

March 12, 2018

Checked

WG

Drawn

MAM/KM

Project Number

570-215

Building Number

24

Drawing Number

SS511

Dwg. 24 of 176

Office of  
Construction  
and Facilities  
Management

