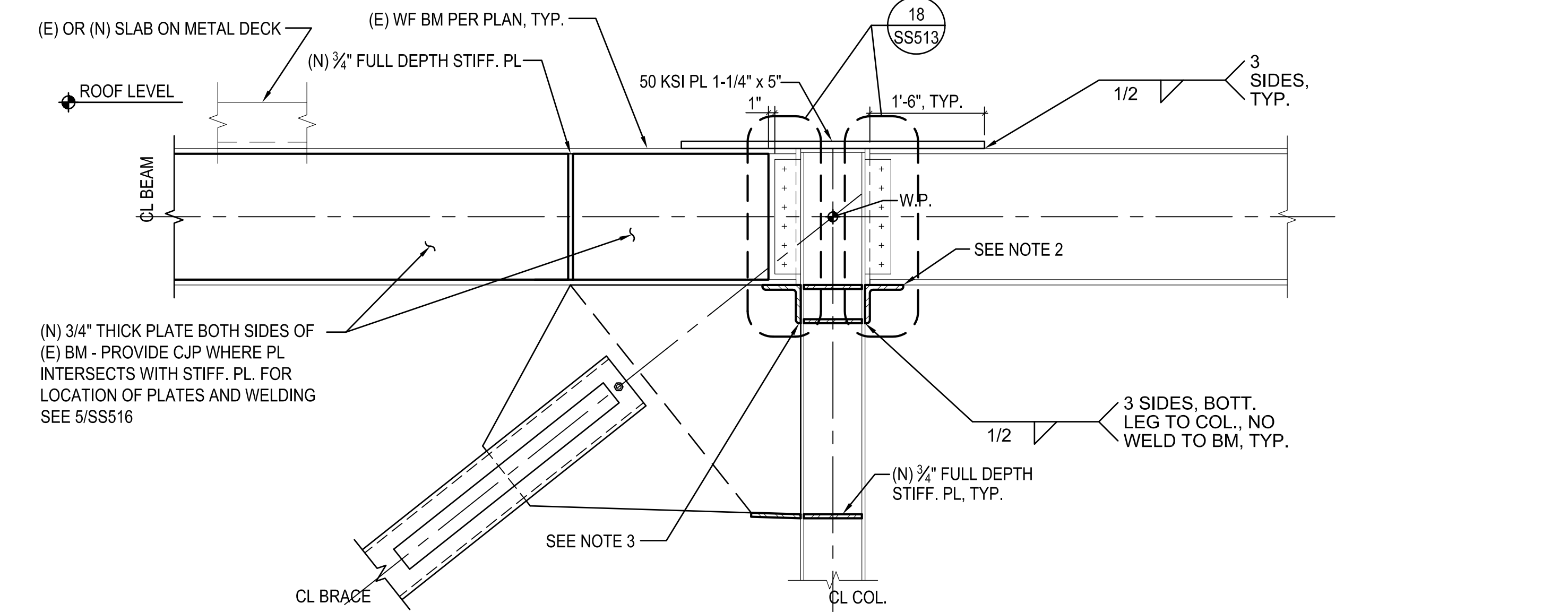
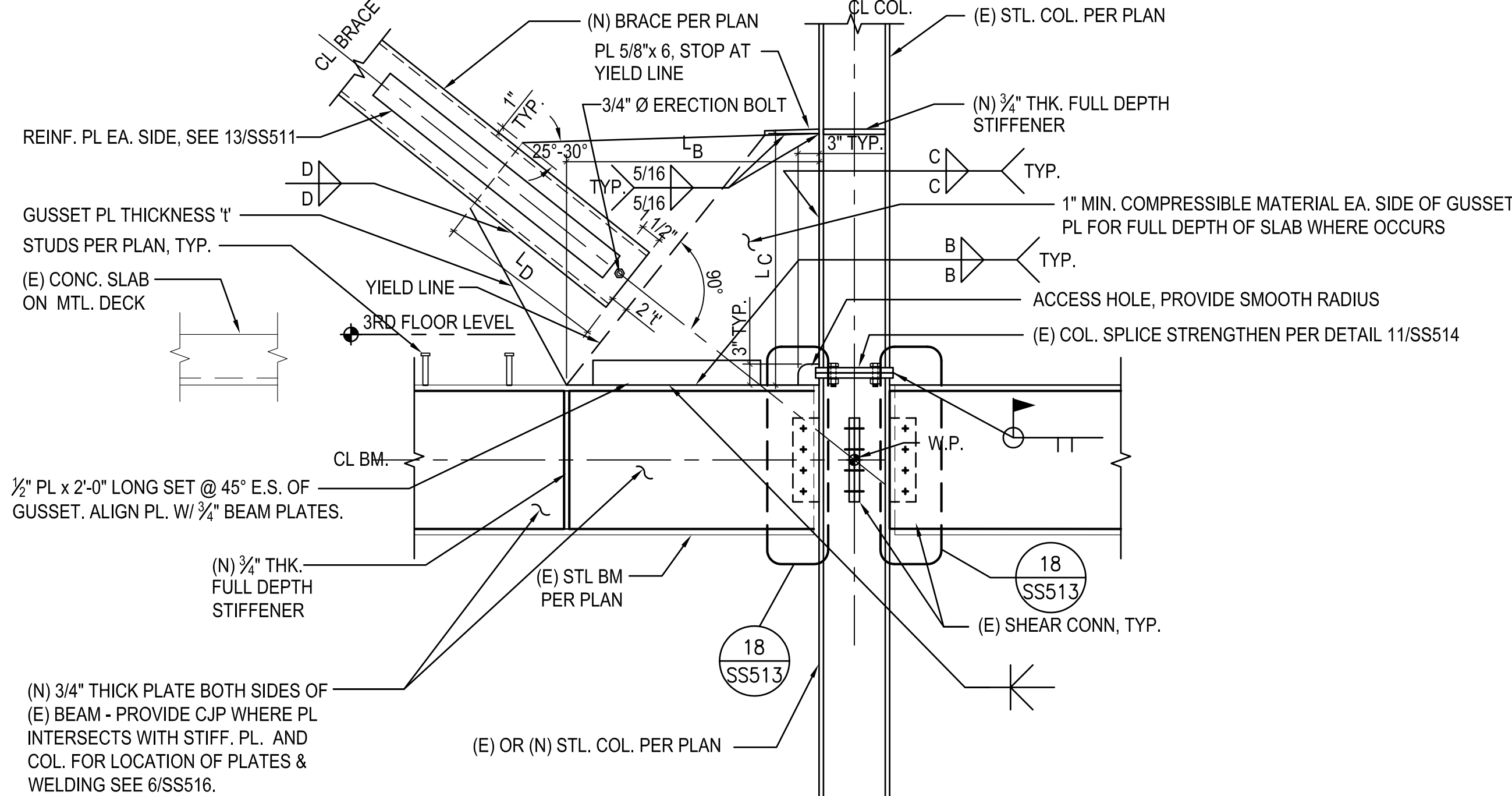


three inches = one foot
one inch = one foot
one and one half inches = one foot
three quarters inch = one foot
one half inch = one foot
one quarter inch = one foot
three eighths inch = one foot
one eighth inch = one foot
one quarter inch = one foot
one eighth inch = one foot
one sixteenth inch = one foot



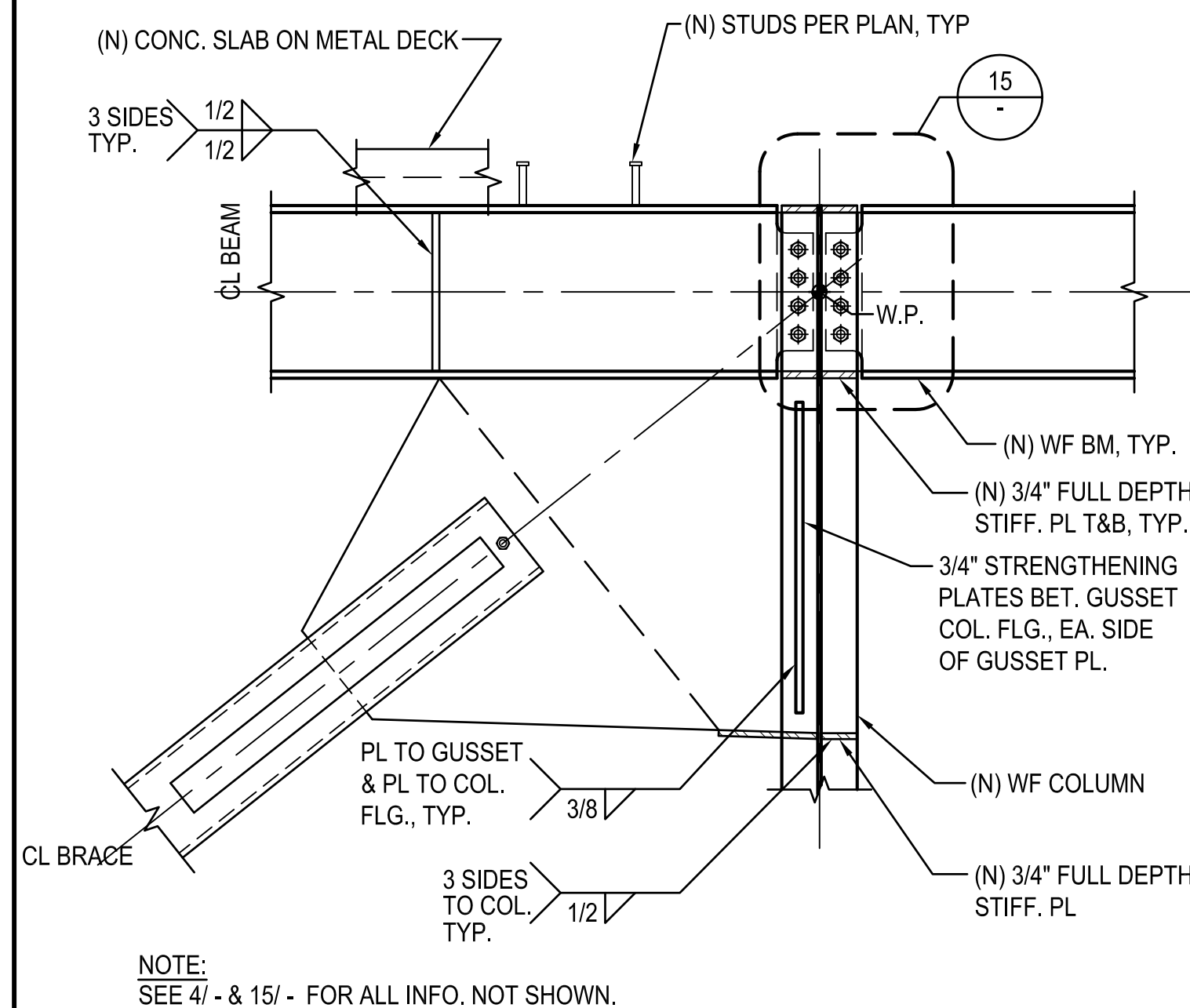
10 BRACE AT (E) WF BM TO WF COL. STRONG-WAY CONNECTION AT (E) ROOF
N.T.S.

- NOTES:
1. SEE 4/ - FOR ALL INFO. NOT SHOWN.
2. L6x6x $\frac{3}{8}$ x0'-6\"/>

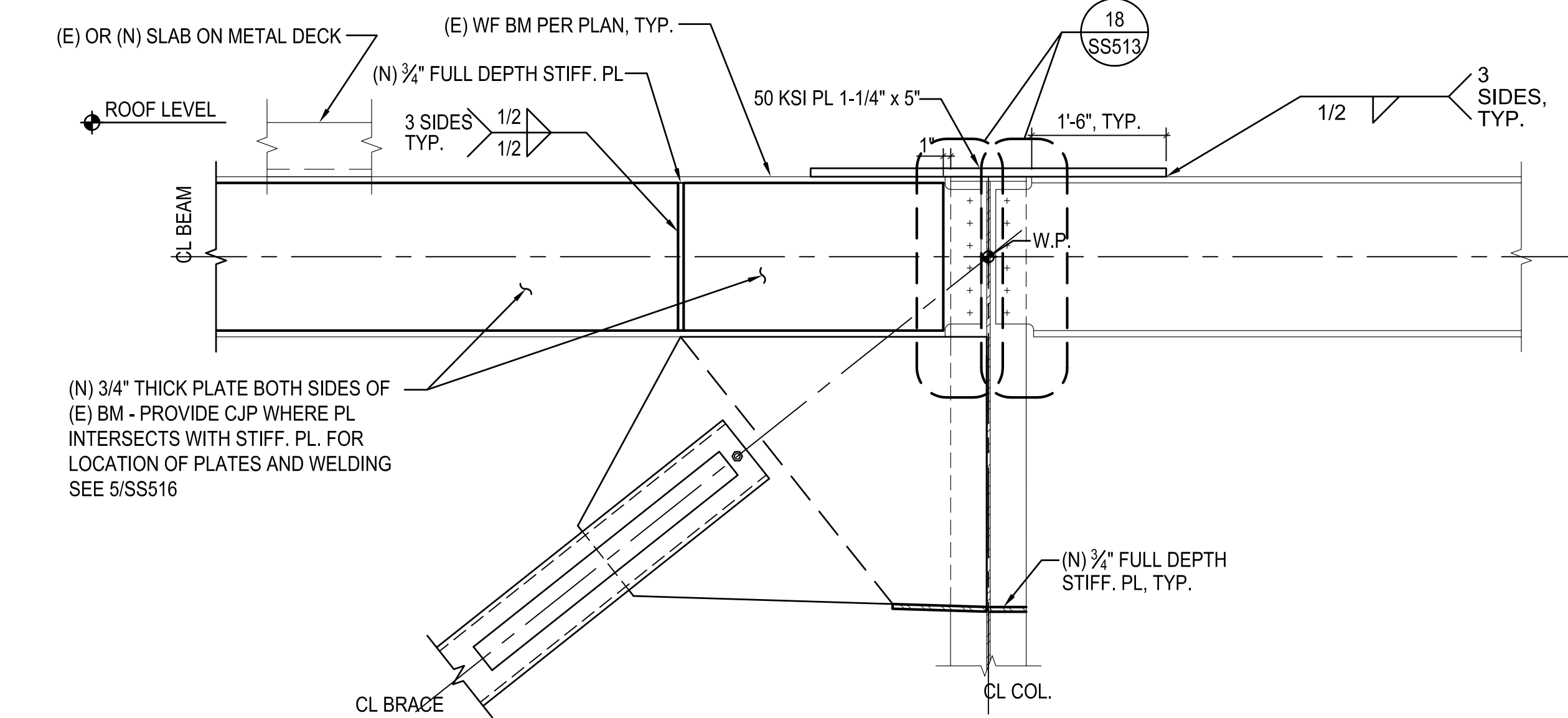


4 BRACE AT (E) WF BM TO WF COL. STRONG-WAY CONNECTION
N.T.S.

- NOTES:
1. SEE 11/SS531 FOR DIMENSIONS 'Y', 'LB', 'LC', 'LD' AND WELDS 'B', 'C', AND 'D'.

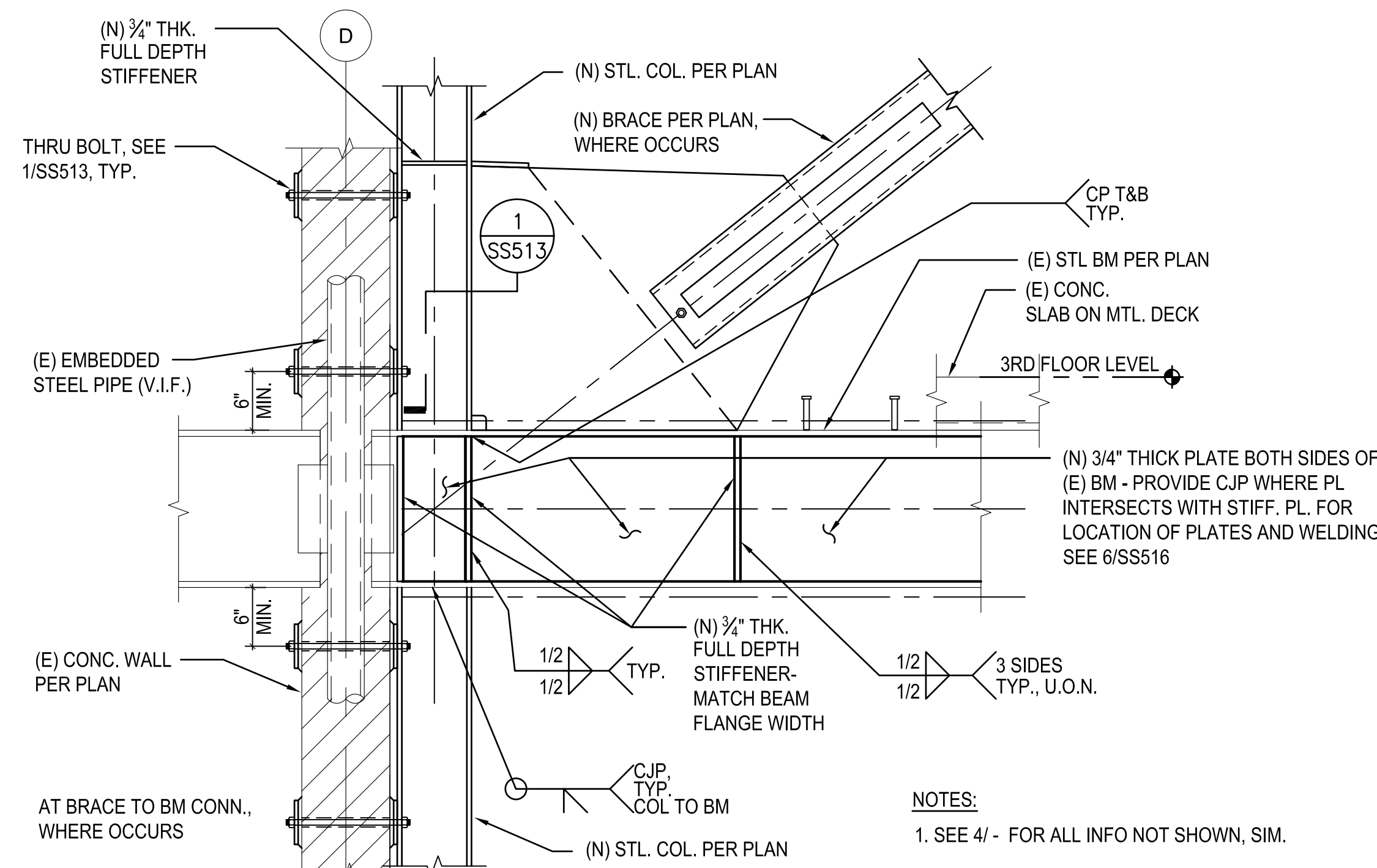


14 BRACE AT (N) WF BM TO WF COL. WEAK-WAY CONNECTION AT ROOF
N.T.S.



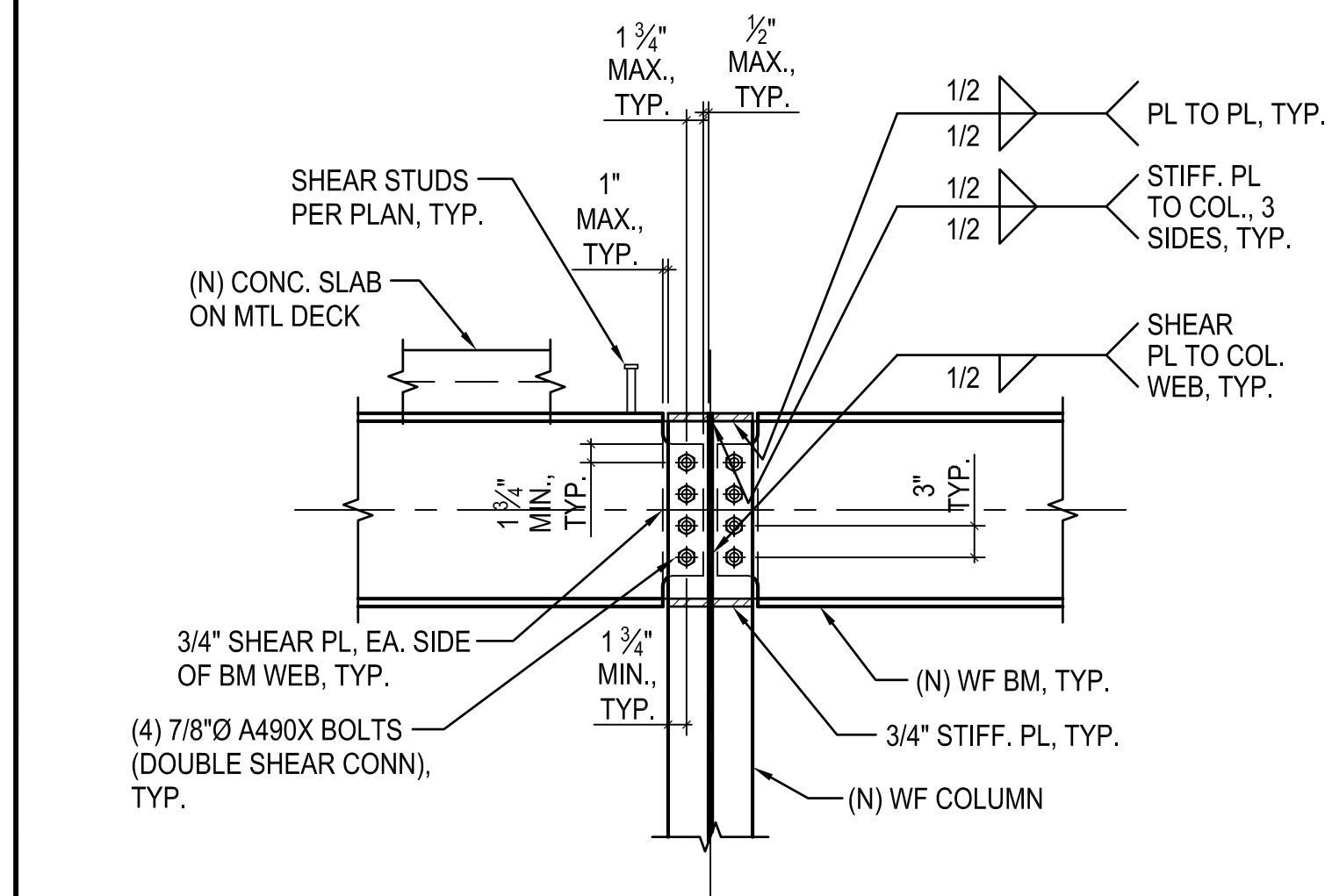
11 BRACE AT (E) WF BM TO WF COL. WEAK-WAY CONNECTION AT (E) ROOF
N.T.S.

- NOTES:
1. SEE 6/ - FOR ALL INFO NOT SHOWN.



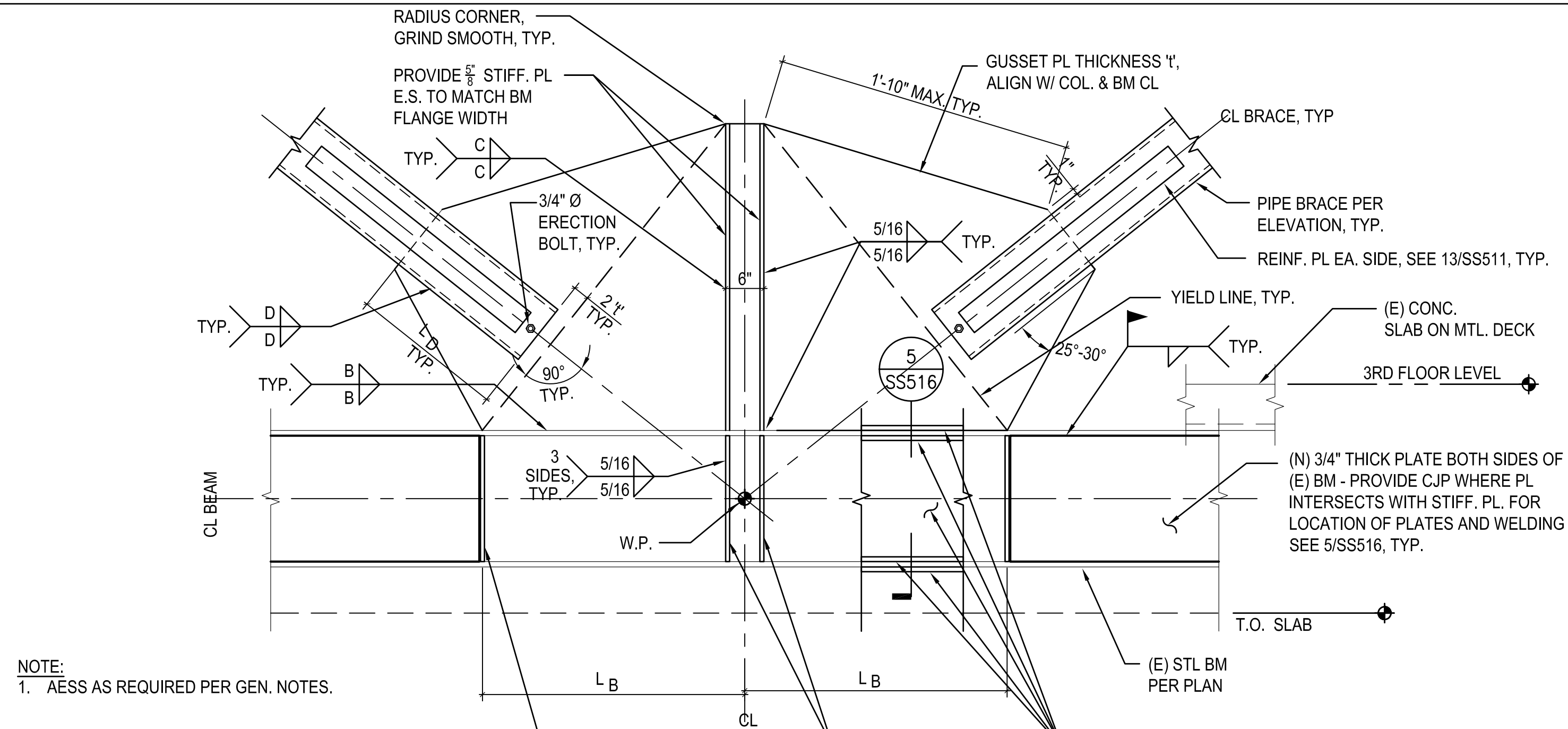
5 BRACE AT (N) COL. & (E) BEAM
N.T.S.

- NOTES:
1. SEE 4/ - FOR ALL INFO NOT SHOWN, SIM.



15 BEAM TO BEAM COL. CONNECTION AT ROOF
N.T.S.

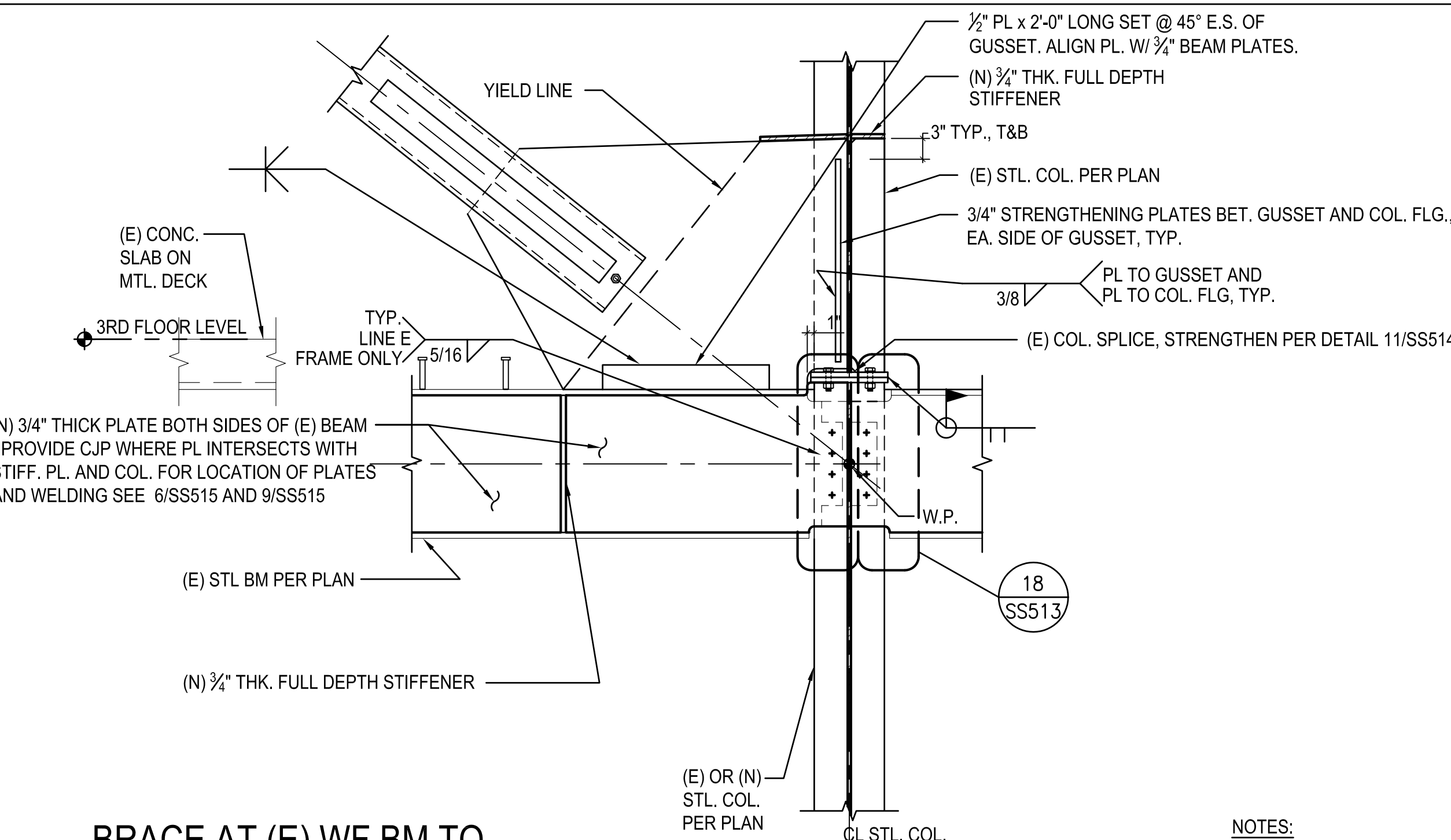
- NOTES:
1. SEE TYPICAL DETAILS FOR INFORMATION NOT SHOWN.
2. AESS AS REQUIRED PER GEN. NOTES.



12 BRACED FRAME CONNECTION AT MIDSPAN
N.T.S.

- NOTE:
1. AESS AS REQUIRED PER GEN. NOTES.

- NOTES:
1. SEE 11/SS531 FOR DIMENSIONS 'Y', 'LB', 'LC', 'LD' AND WELDS 'B', 'C', AND 'D'.



6 BRACE AT (E) WF BM TO WF COL. WEAK-WAY CONNECTION
N.T.S.

- NOTES:
1. SEE 4/ - FOR ALL INFO NOT SHOWN, SIM.
2. ADDITIONAL BEAM STRENGTHENING PLATES NOT SHOWN FOR CLARITY.

Revisions	Date
2	7/25/18
1	7/22/18

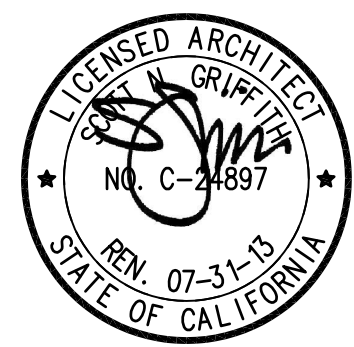
CONSULTANTS:
Degenkolb
DEGENKOLB ENGINEERS
235 Montgomery Street, Suite 500
San Francisco, CA 94104
415.392.6952 Phone
415.544.0762 Fax
www.degenkolb.com
80584020.00



ARCHITECT/ENGINEERS:

HMC Architects

1827 E. Fir Avenue, Studio 103 / Fresno, CA 93720
T 559 322 2444 / www.hmcarchitects.com



Drawing Title
STEEL DETAILS

Approved Project Director

Project Title
**BUILDING 24
SEISMIC CORRECTION
AND ADDITION**

Location
VAMC FRESNO, CA

Date
March 12, 2018

Checked
WG

Drawn
MAM/KM

Project Number
570-215

Building Number
24

Drawing Number

SS512
Dwg. 25 of 176

Office of
Construction
and Facilities
Management

