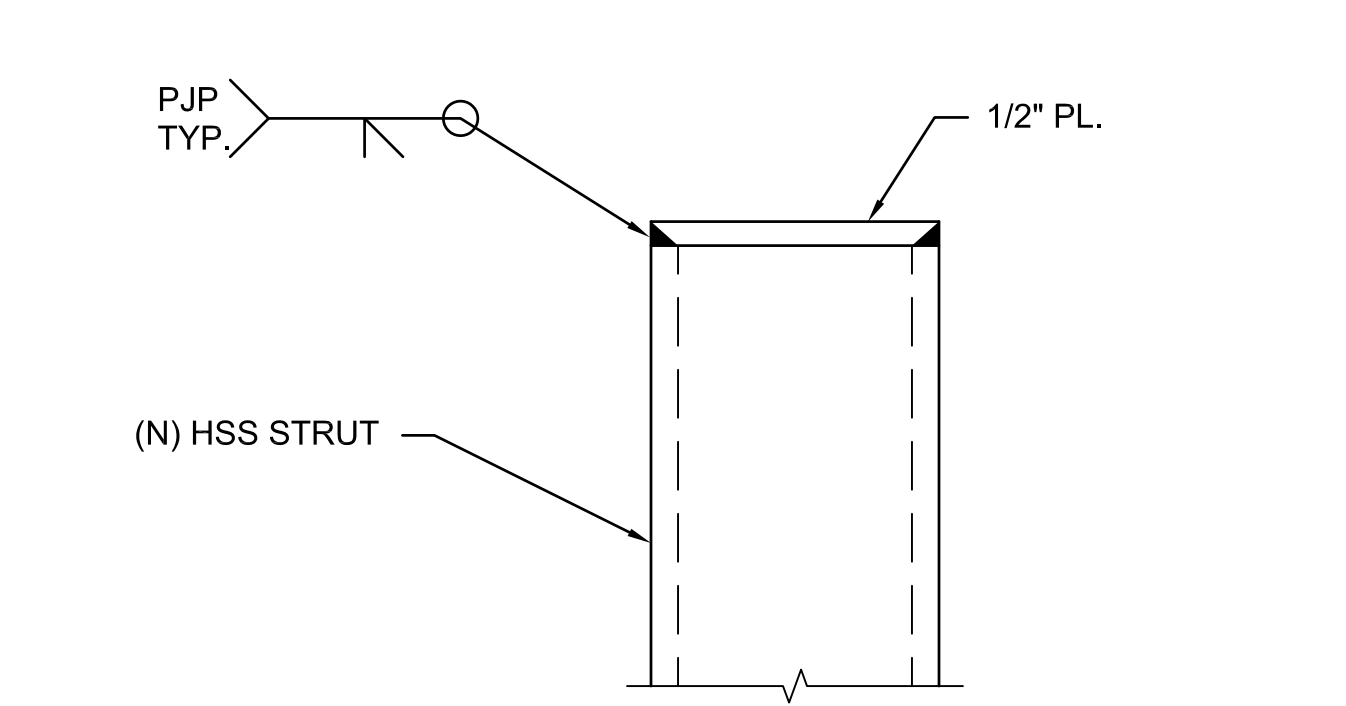
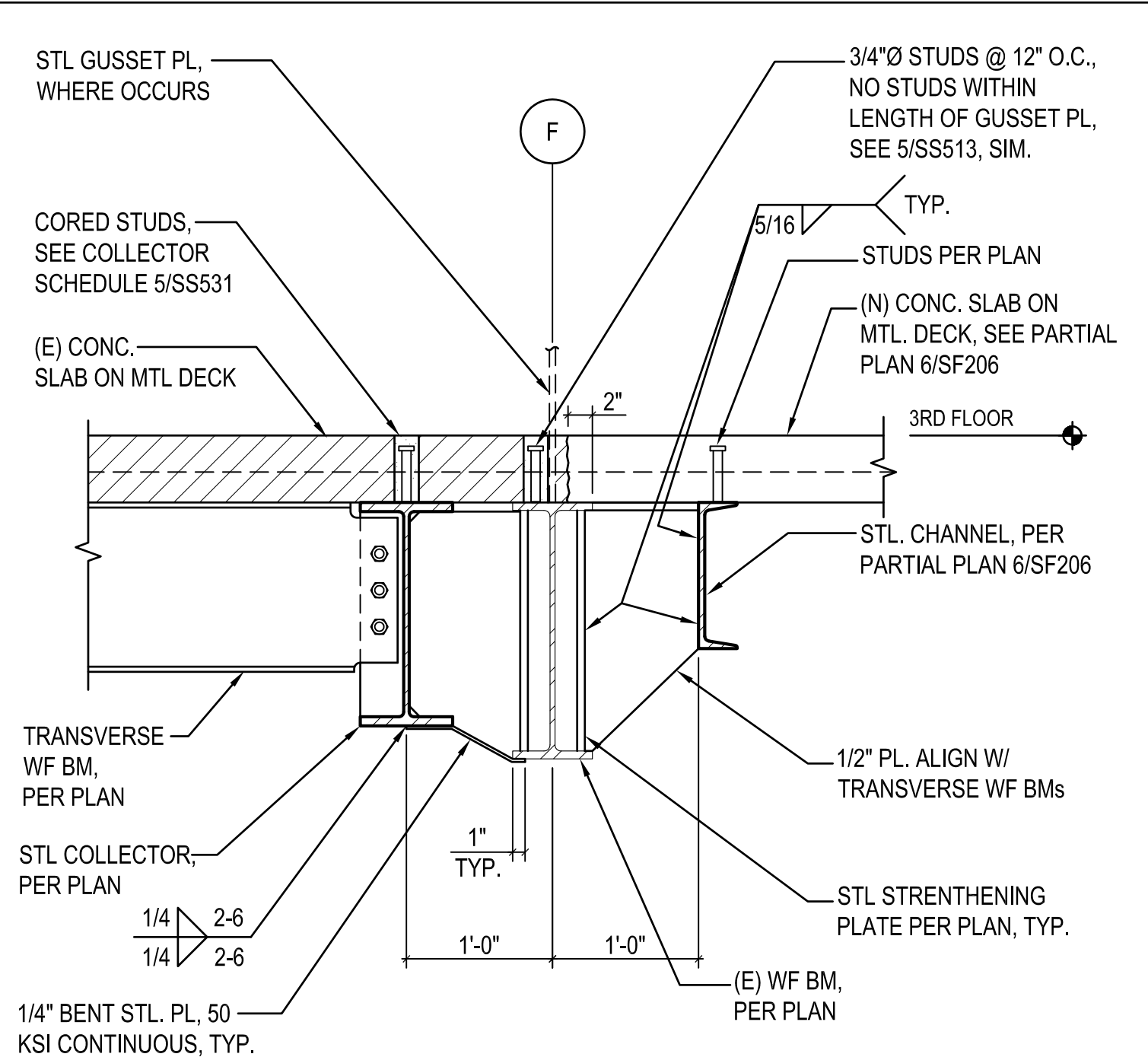


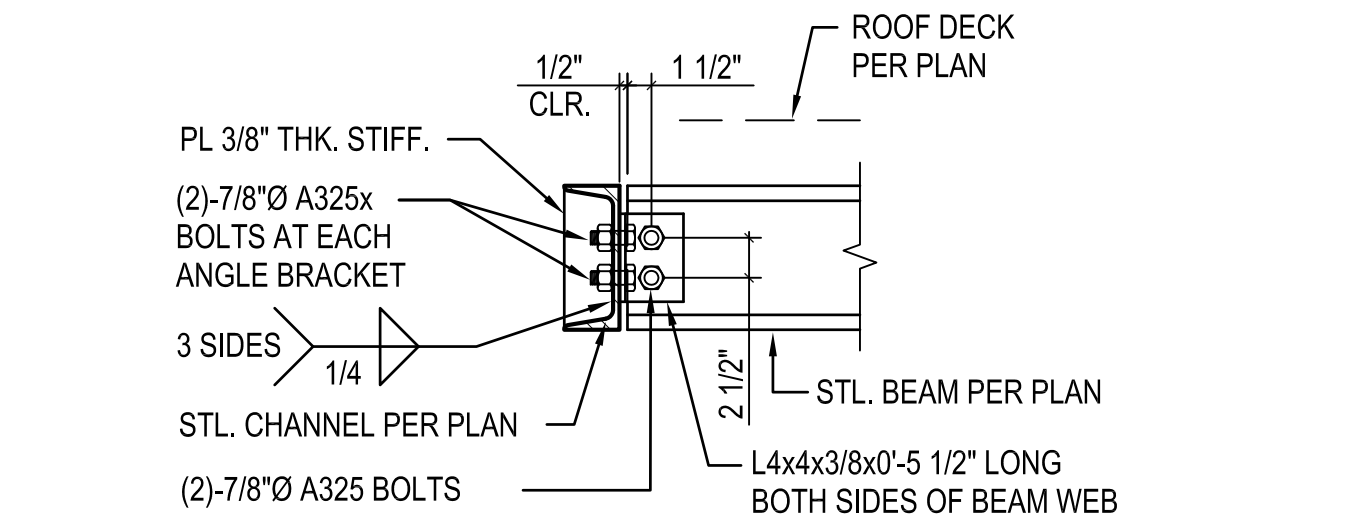
three inches = one foot
one and one half inches = one foot
one inch = one foot
three quarters inch = one foot
one half inch = one foot
one quarter inch = one foot
three eighths inch = one foot
one eighth inch = one foot
one quarter inch = one foot
one eighth inch = one foot
one sixteenth inch = one foot



13 HSS CAP PLATE
N.T.S.



14 (N) BEAM-BEAM SIDE CONNECTION
AT FRAME GRIDLINE 'F'
1" = 1'-0"



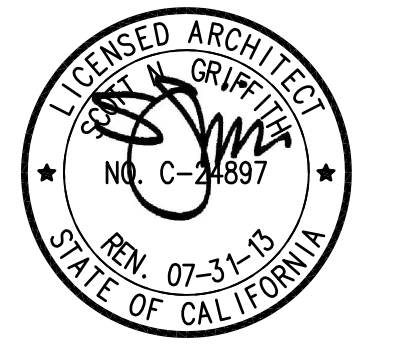
15 SUPPORT BEAM HANGER DETAIL
N.T.S.

Revisions	Date
2	7/25/18
1	7/22/18

CONSULTANTS:
Degenkolb
DEGENKOLB ENGINEERS
235 Montgomery Street, Suite 500
San Francisco, CA 94104
415.392.6952 Phone
415.544.0762 Fax
www.degenkolb.com
80584020.00



ARCHITECT/ENGINEERS:
HMC Architects
1827 E. Fir Avenue, Studio 103 / Fresno, CA 93720
T 559 322 2444 / www.hmcarchitects.com

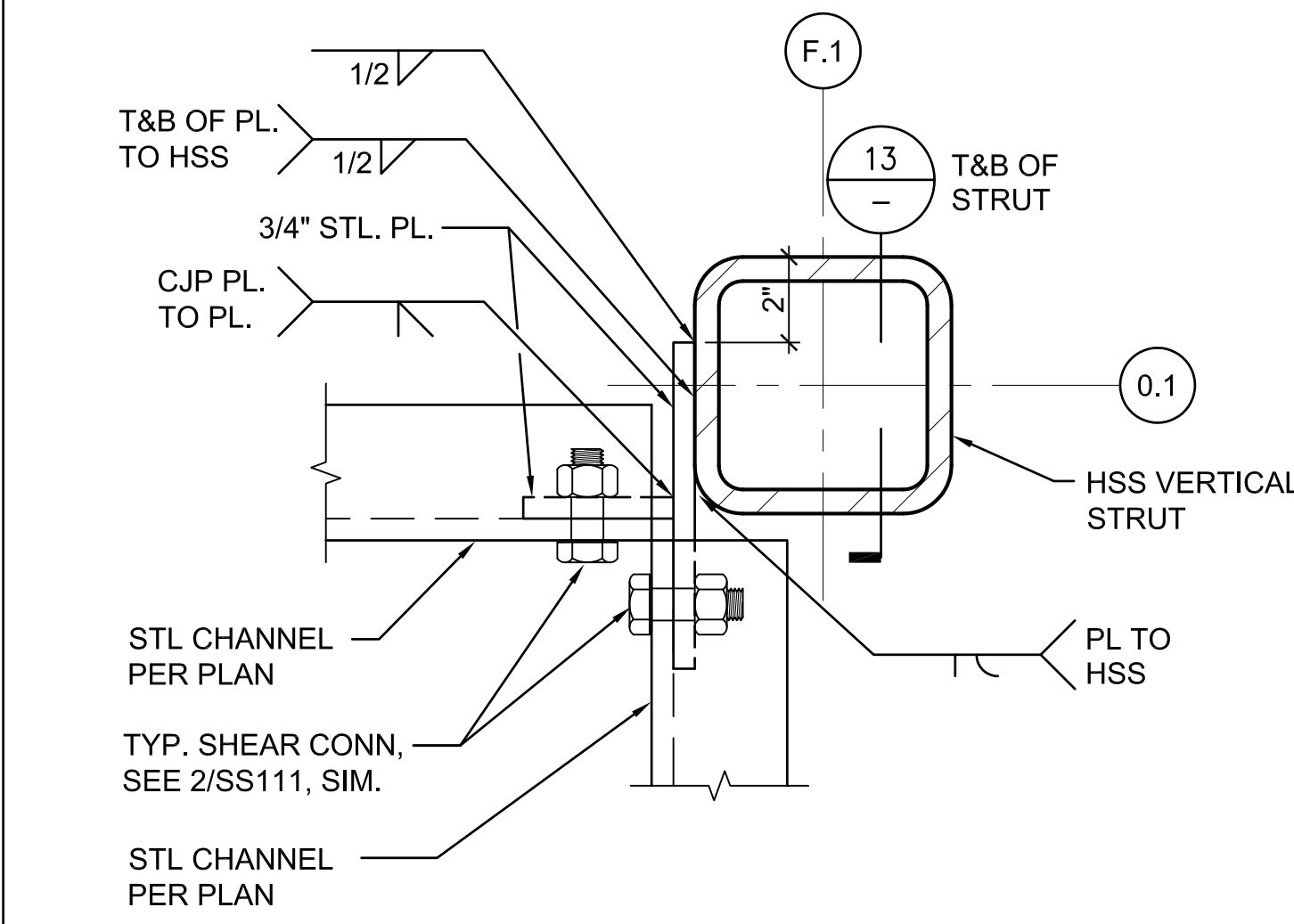


Drawing Title
STEEL DETAILS
Approved Project Director

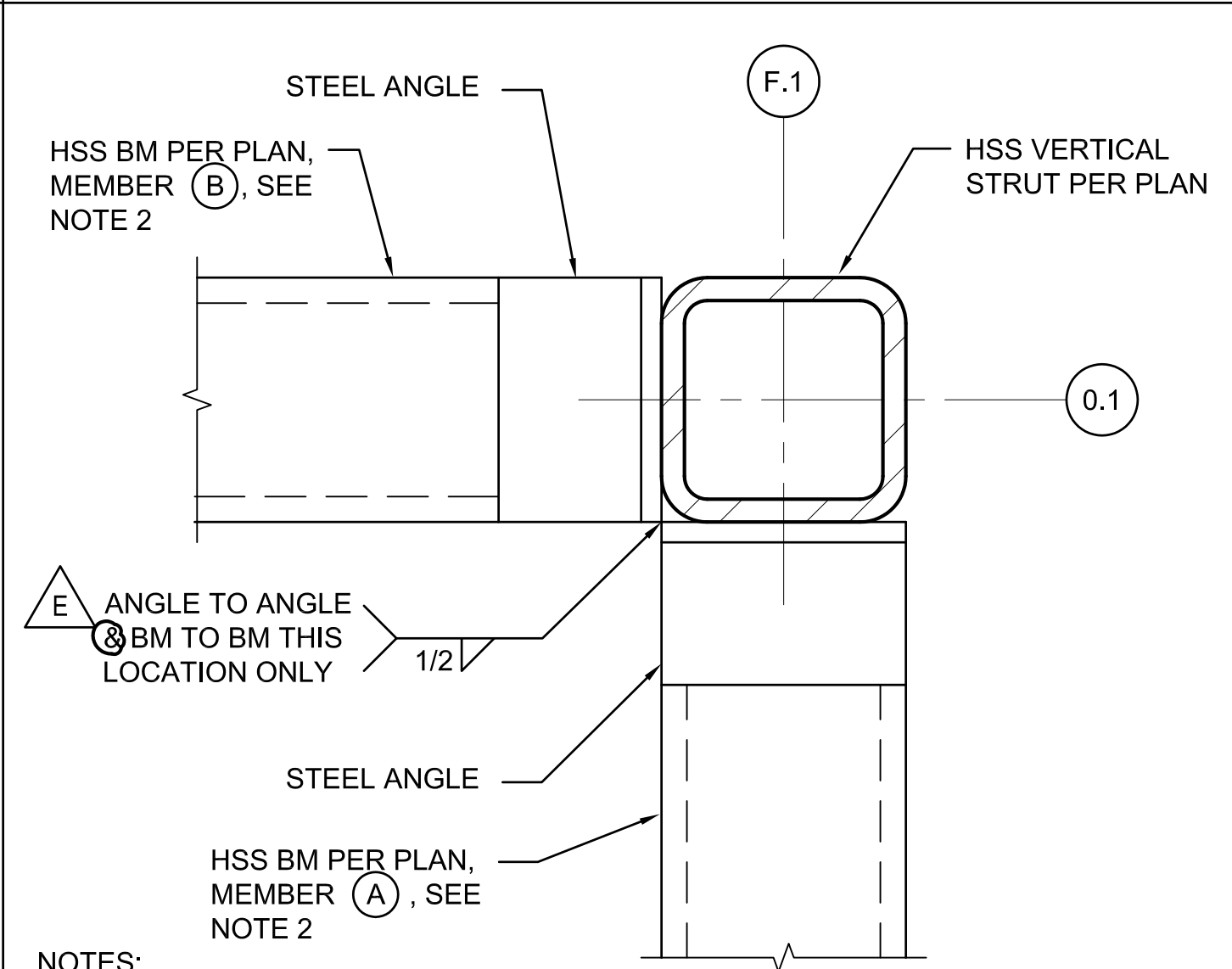
Project Title
**BUILDING 24
SEISMIC CORRECTION
AND ADDITION**
Location
VAMC FRESNO, CA
Date
March 12, 2018
Checked
WG
Drawn
MAM/KM

Project Number
570-215
Building Number
24
Drawing Number
SS517
Dwg. 30 of 176

Office of
Construction
and Facilities
Management
Department of
Veterans Affairs

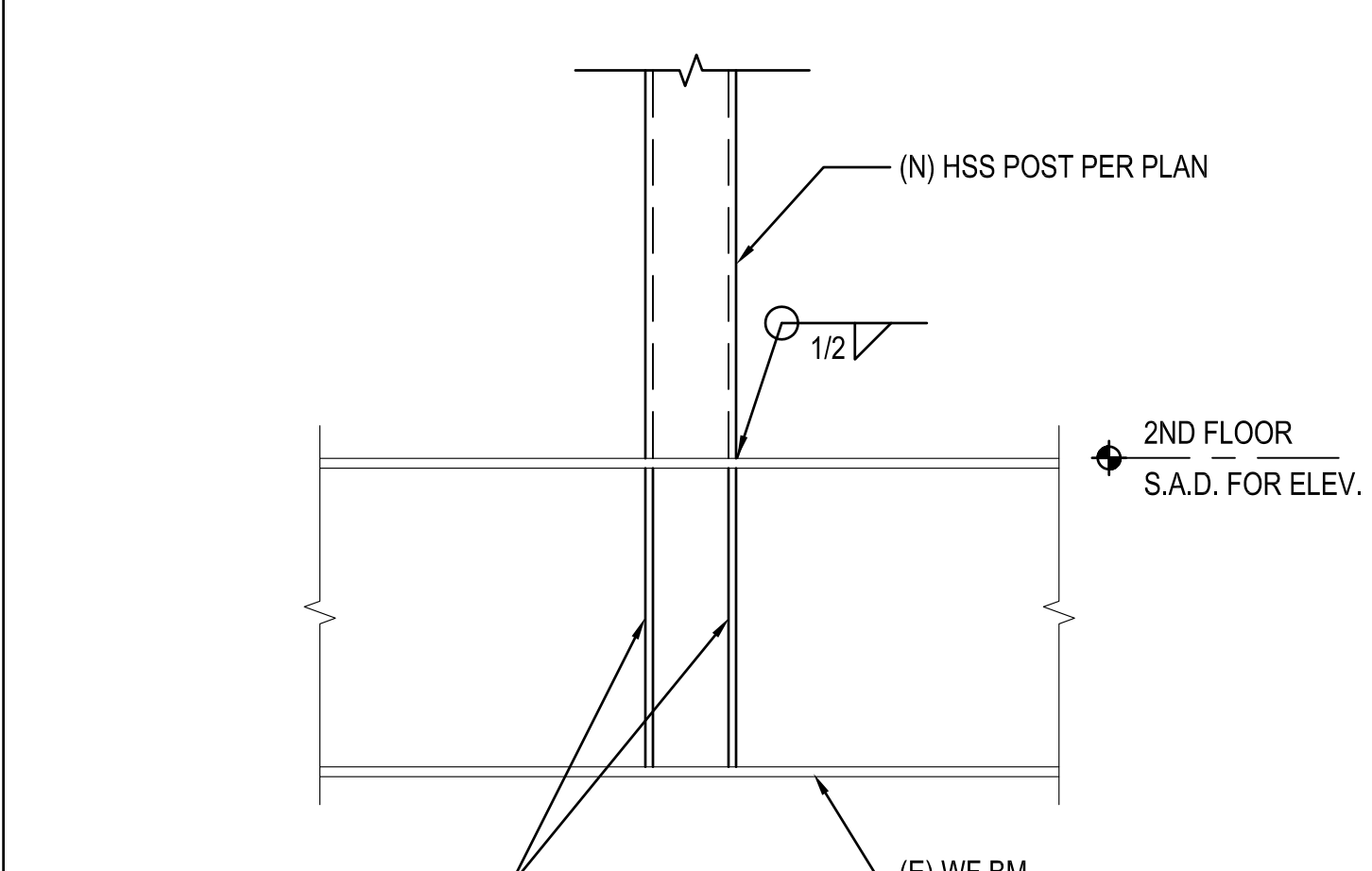


7 CORNER HSS STRUT AT ROOF
N.T.S.



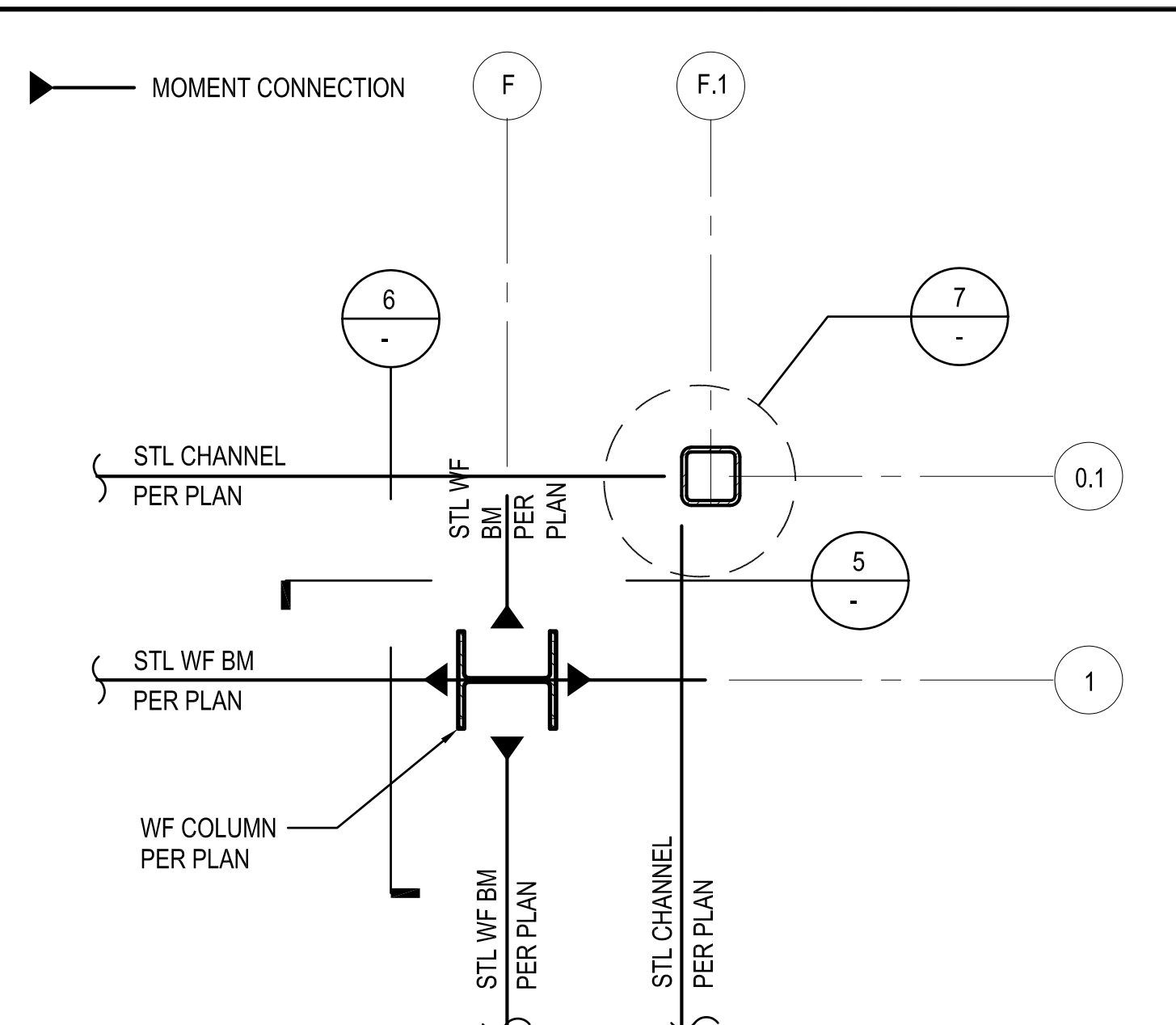
NOTES:
1. SEE 12/SS515 FOR ALL CONN. INFO, SIM.
2. CONNECT MEMBER (A) TO STRUT FIRST, CONNECT MEMBER (B) TO STRUT SECOND. VERTICAL 1/2" FILLET WELD IS IN LIEU OF FLARE BEVEL OF MEMBER (B) TO HSS
3. AESS AS REQUIRED PER GEN. NOTES.

8 CORNER HSS STRUT - TYPICAL BM CONN.
N.T.S.

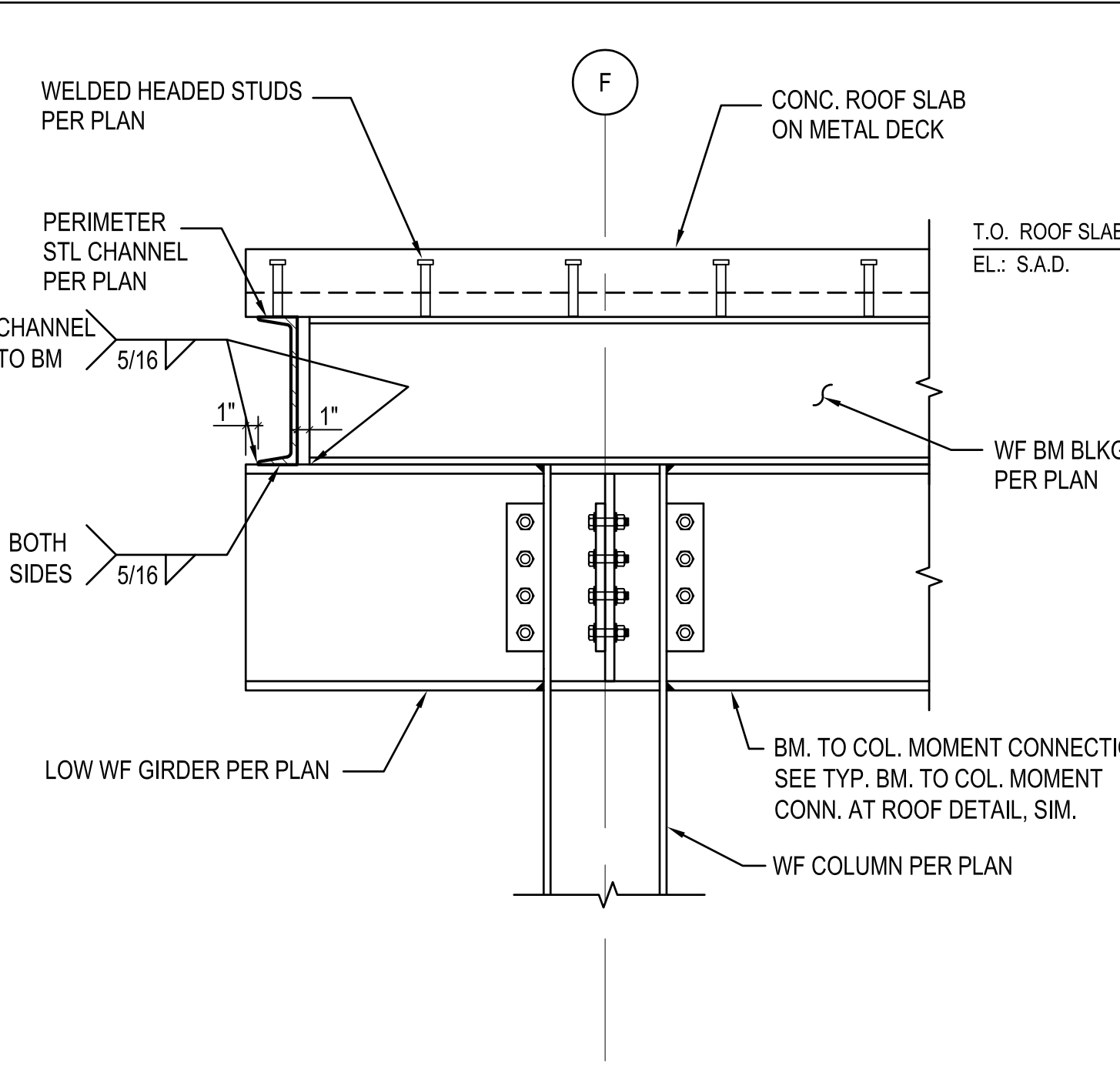


NOTES:
1. SIM. AR 3RD FLOOR, BUT DO NOT PROVIDE STIFF. PL.

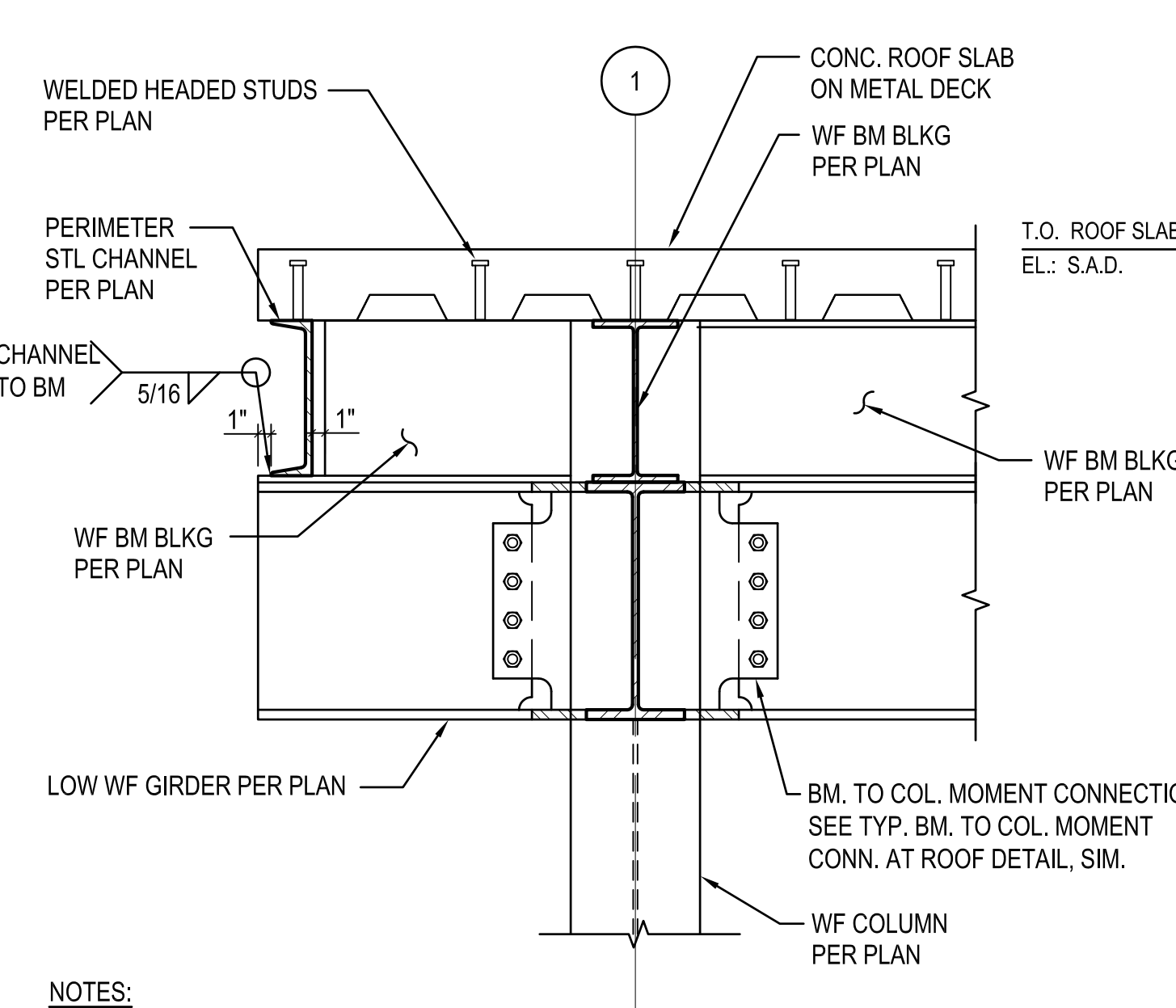
9 POST CONNECTION @ (E) BM.
1" = 1'-0"



4 PARTIAL ROOF LEVEL PLAN
N.T.S.

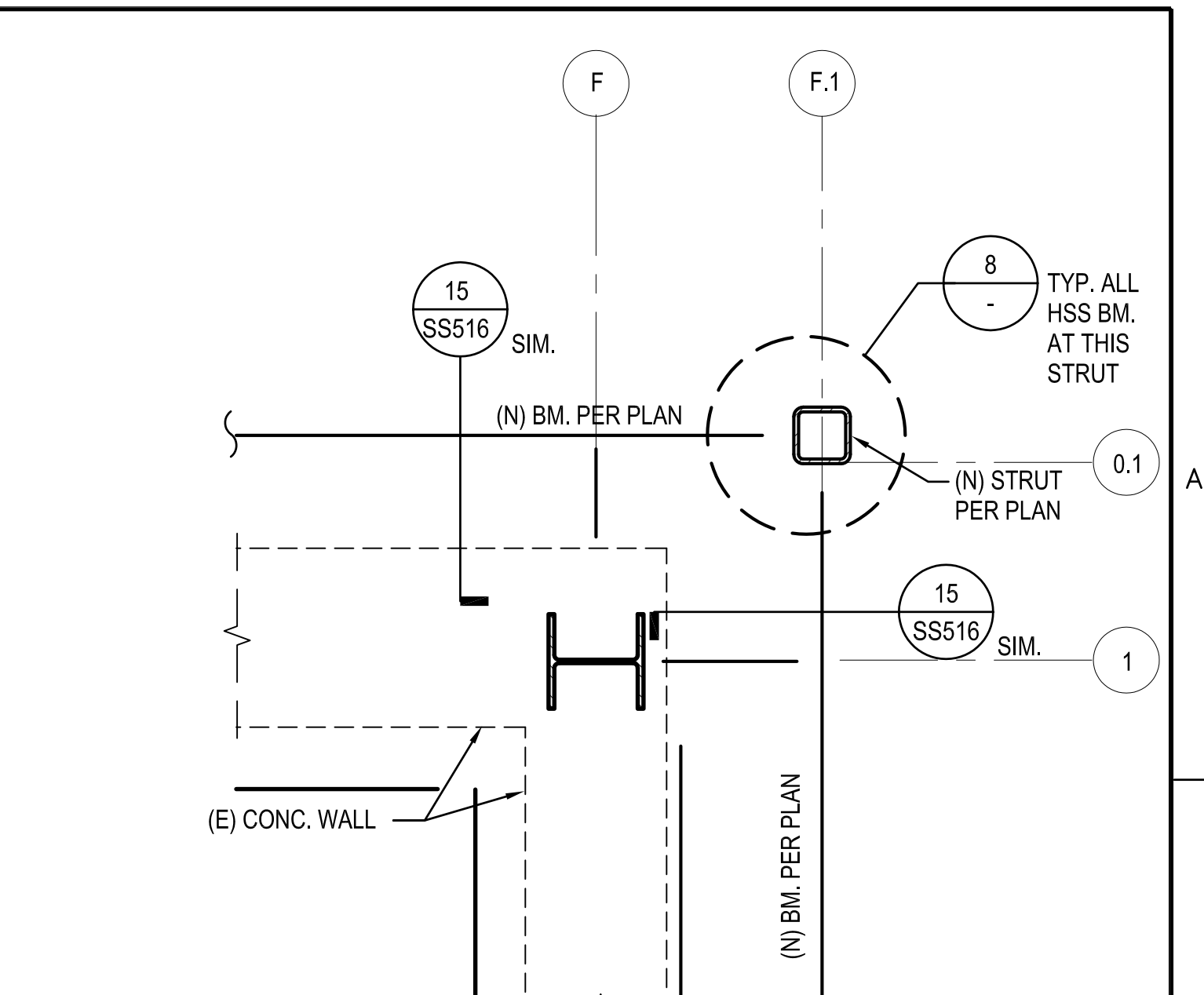


5 PERIMETER CHANNEL
CORNER COLUMN, LOOKING SOUTH
1" = 1'-0"

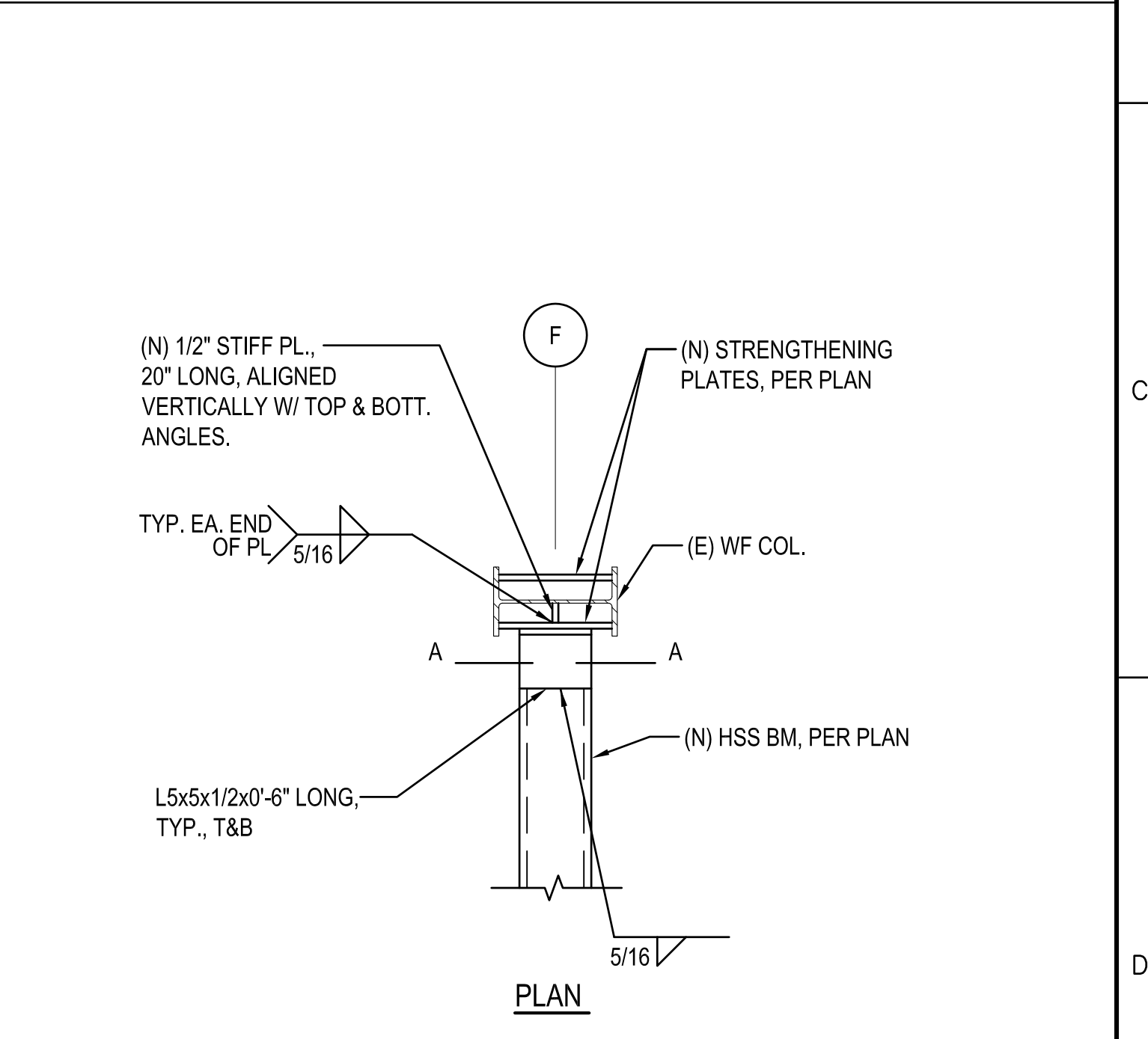


NOTES:
1. SEE 5/- FOR ALL INFO NOT SHOWN.

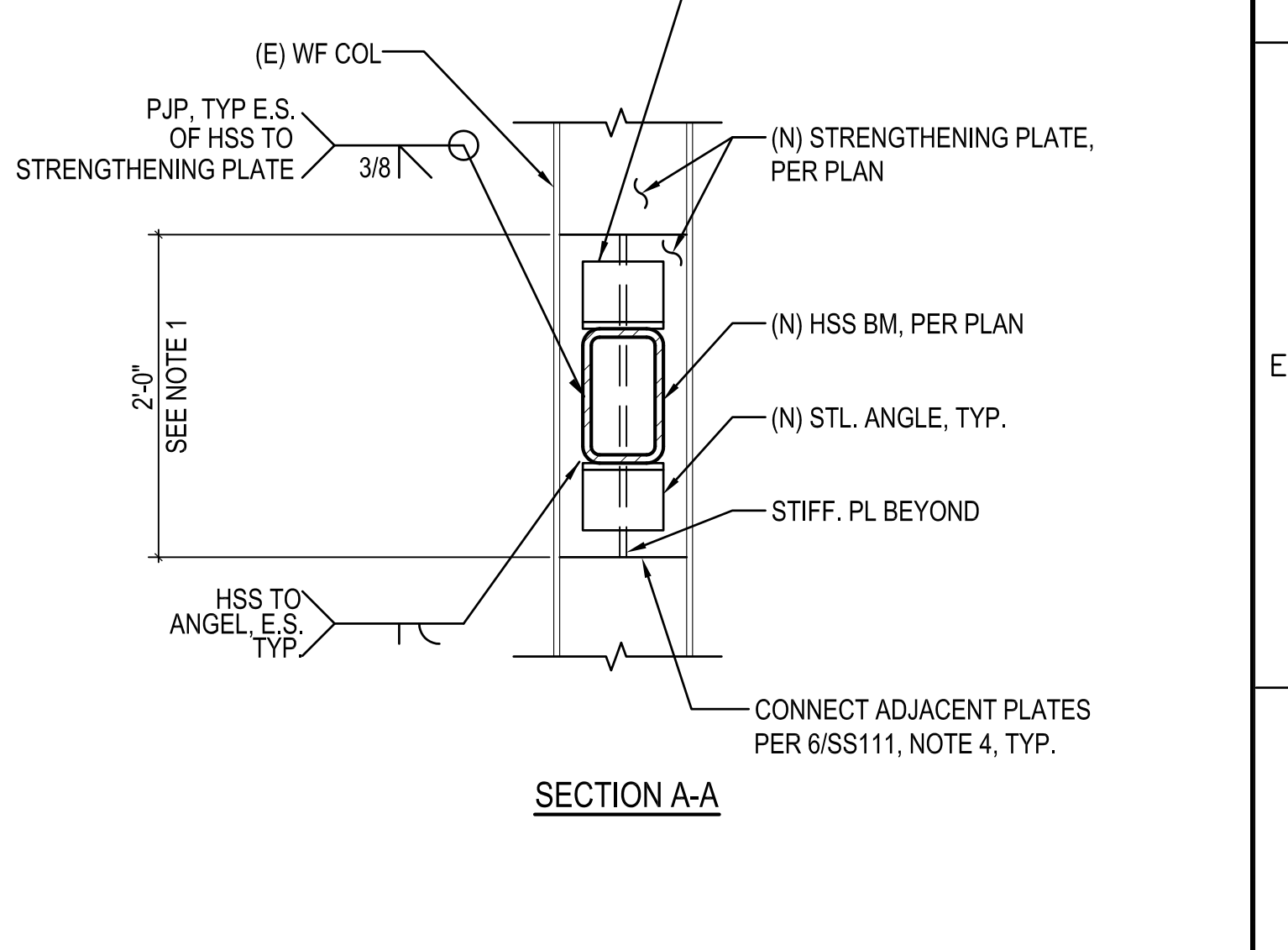
6 PERIMETER CHANNEL AT
CORNER COLUMN, LOOKING EAST
1" = 1'-0"



1 PARTIAL 3RD FLOOR PLAN
N.T.S.



3 HSS TO (E) COLUMN CONNECTION AT
SECOND FLOOR
1" = 1'-0"



NOTES:
1. INSTALL THIS SECTION OF STRENGTHENING PLATE PRIOR TO ADJACENT PLATES ABOVE & BELOW TO ALLOW FOR STIFF. PLATE WELDING

3 HSS TO (E) COLUMN CONNECTION AT
SECOND FLOOR
1" = 1'-0"