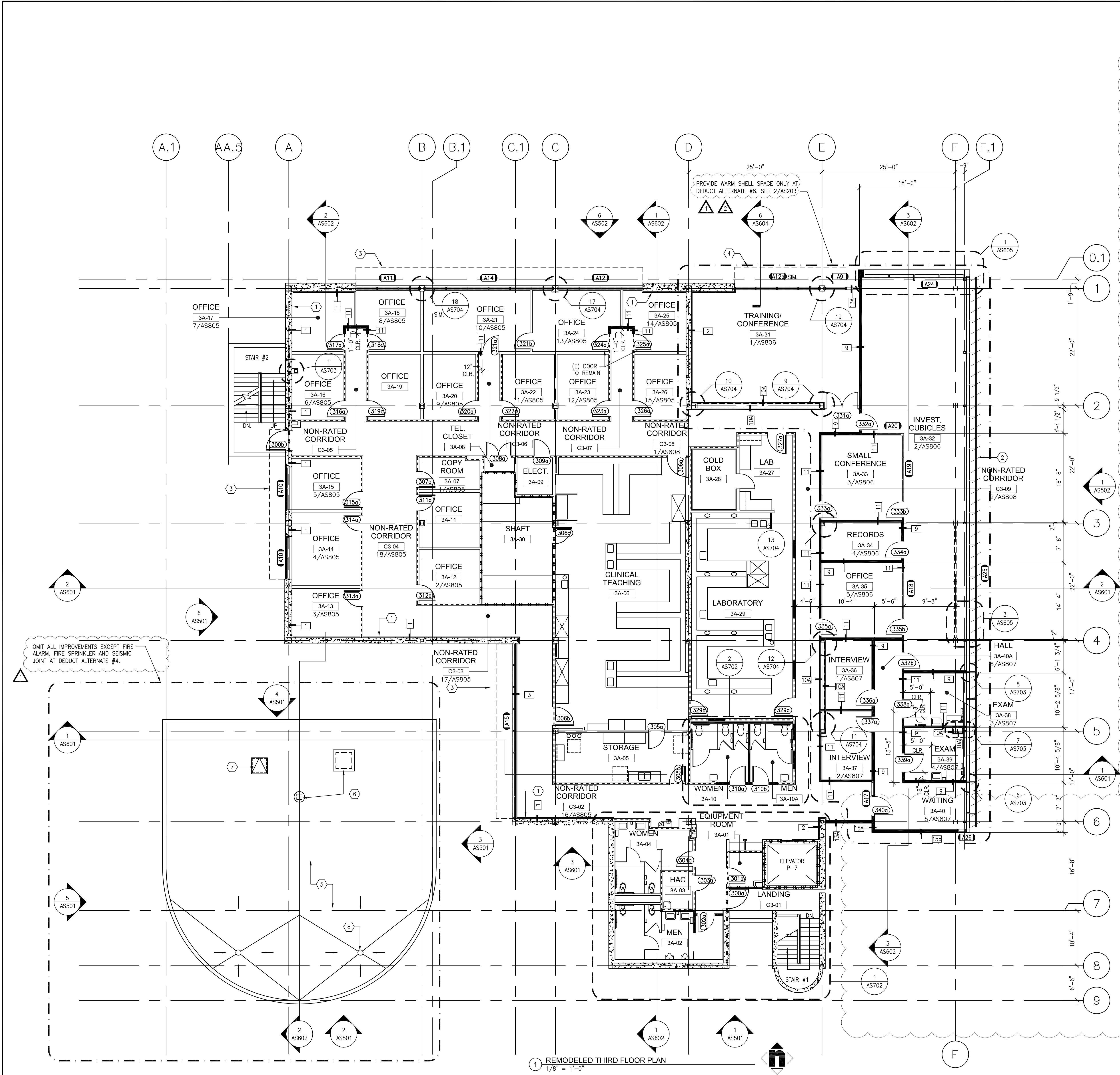


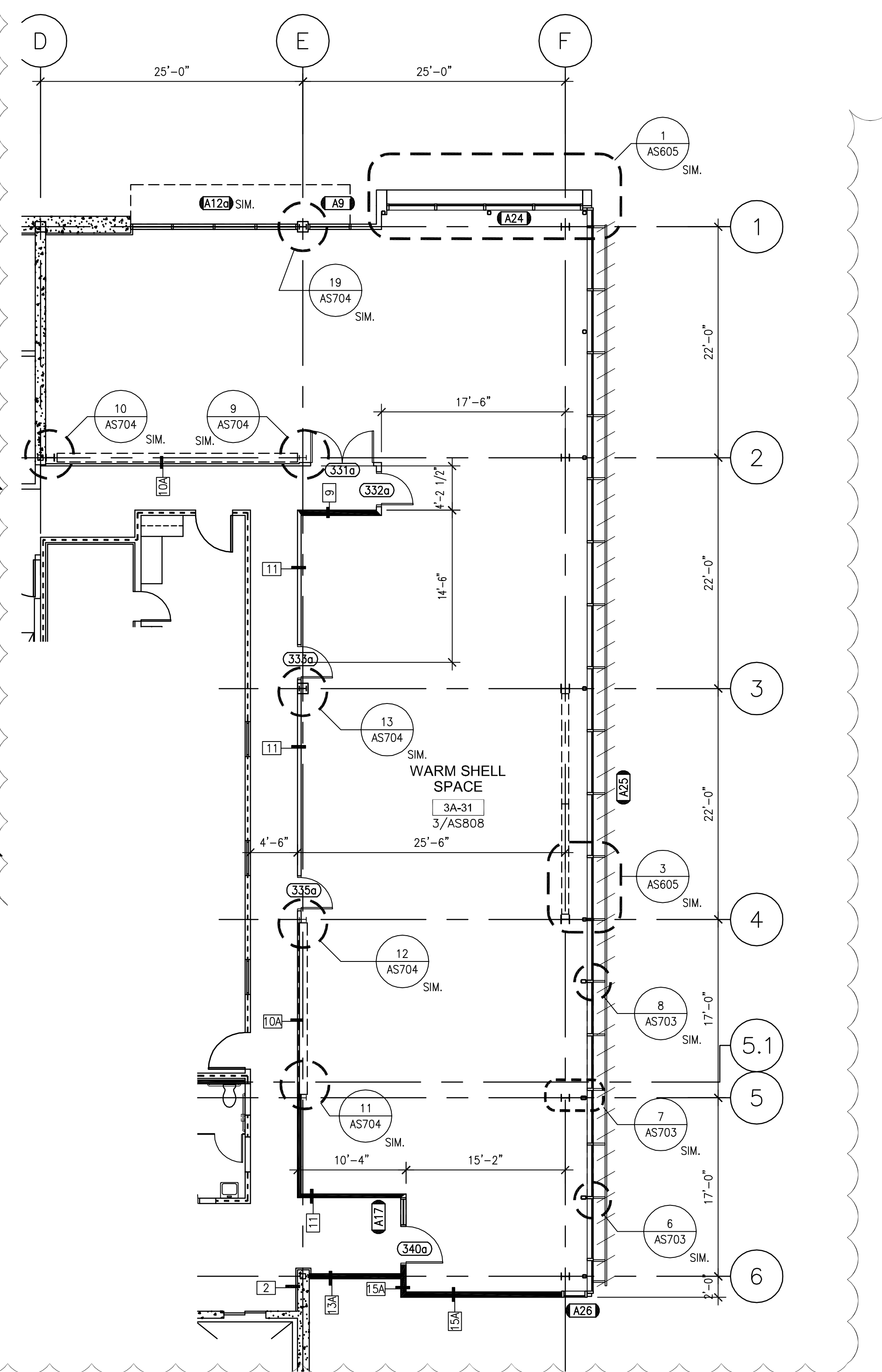
three inches = one foot
one and one half inches = one foot
one inch = one foot
three quarters inch = one foot
one half inch = one foot
three eighths inch = one foot
one eighth inch = one foot
one quarter inch = one foot
one eighth inch = one foot



1 REMODELED THIRD FLOOR PLAN
1/8" = 1'-0"

- FLOOR PLAN LEGEND**
- (1) FULL HEIGHT METAL STUD @ 16" O.C. U.N.O. WITH SOUND BATT. INSULATION AND FINISHES FULL HEIGHT FROM FINISH FLOOR TO DECK ABOVE. REFER TO DETAIL 6, 7 & 8/AS906.
 - (2) PARTIAL HEIGHT METAL STUD @ 16" O.C. U.N.O. WITH SOUND BATT. INSULATION AND FINISHES FROM FINISH FLOOR TO 2" ABOVE FINISH CEILING. REFER TO DETAIL 5/AS906.
 - (3) (E) METAL STUD WALL WITH SOUND BATT INSULATION. WALL AND FINISHES FULL HEIGHT FROM FINISH FLOOR TO DECK ABOVE. REPLACE FINISHES WHERE NOTED.
 - (4) (E) METAL STUD WALL WITH THERMAL INSULATION. WALL AND FINISHES FULL HEIGHT FROM FINISH FLOOR TO DECK ABOVE. REPLACE FINISHES WHERE NOTED.
 - (5) (E) FULL HEIGHT STRUCTURAL CONCRETE WALL.
 - (6) (E) METAL STUD WALL WITH SOUND BATT INSULATION. WALL AND FINISHES PARTIAL HEIGHT. REPLACE FINISHES WHERE NOTED.
 - (7) (E) WORK STATION. FURNITURE PARTITION W/ RUBBER BASE.
 - (8) 1 HR FIRE BARRIER. WALL AND FINISHES FULL HEIGHT FROM FLOOR TO DECK ABOVE.
 - (9) (E) 2 HR FIRE BARRIER. WALL AND FINISHES FULL HEIGHT FROM FLOOR TO DECK ABOVE.
 - (W1) DENOTES WALL TYPE. SEE 1/AS906.
 - (100A) DENOTES DOOR. SEE SHEET AS901 AND AS902.
 - (A2) DENOTES WINDOW. SEE SHEET AS903.

- THIRD FLOOR PLAN - REMODEL KEYNOTES**
- (1) NEW GYPSUM WALLBOARD & RUBBER BASE OVER NEW 2" RIGID INSULATION OVER (E) INSULATION FROM FLOOR TO DECK, TYPICAL AT EXTERIOR WALLS.
 - (2) SUN CONTROL DEVICES - SOLAR TRACKING. (OMIT AT DEDUCT ALT. #7)
 - (3) (E) SUNSCREEN ABOVE. REMOVE DEBRIS AND CLEAN VIA POWERWASH.
 - (4) SUNSCREEN ABOVE. REFER TO DETAIL 19/AS908.
 - (5) (E) ROOF TO REMAIN.
 - (6) (E) EXHAUST FAN TO REMAIN.
 - (7) (E) ROOF HATCH TO REMAIN.
 - (8) (E) ROOF DRAIN TO REMAIN, TYP. OF 2



2 REMODELED PARTIAL THIRD FLOOR PLAN - DEDUCTIVE ALTERNATE 8
1/8" = 1'-0"

	07/22/13 07/25/13	CONSULTANTS:		ARCHITECT/ENGINEERS:	Drawing Title THIRD FLOOR PLAN	Project Title BUILDING 24 SEISMIC CORRECTION AND ADDITION	Project Number 570-215 Building Number 24	Office of Construction and Facilities Management 	
					HMC Architects 1827 E. Fir Avenue, Studio 103 / Fresno, CA 93720 T 559 322 2444 / www.hmcarchitects.com	Approved Project Director	Location VAMC FRESNO, CA		Drawing Number AS203 Dwg. 41 of 176
Revisions	Date					Date March 12, 2013	Checked BB	Drawn CLO	