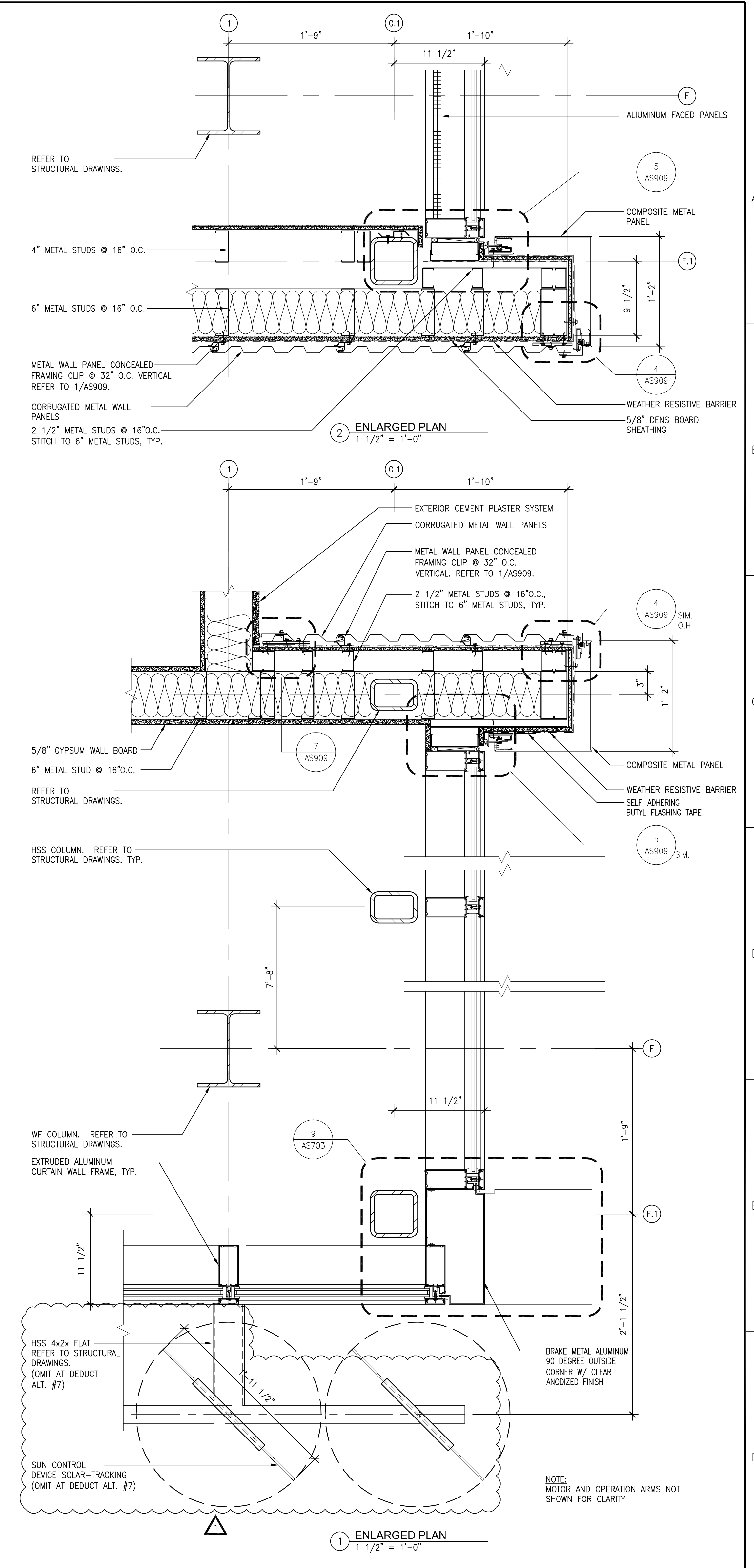
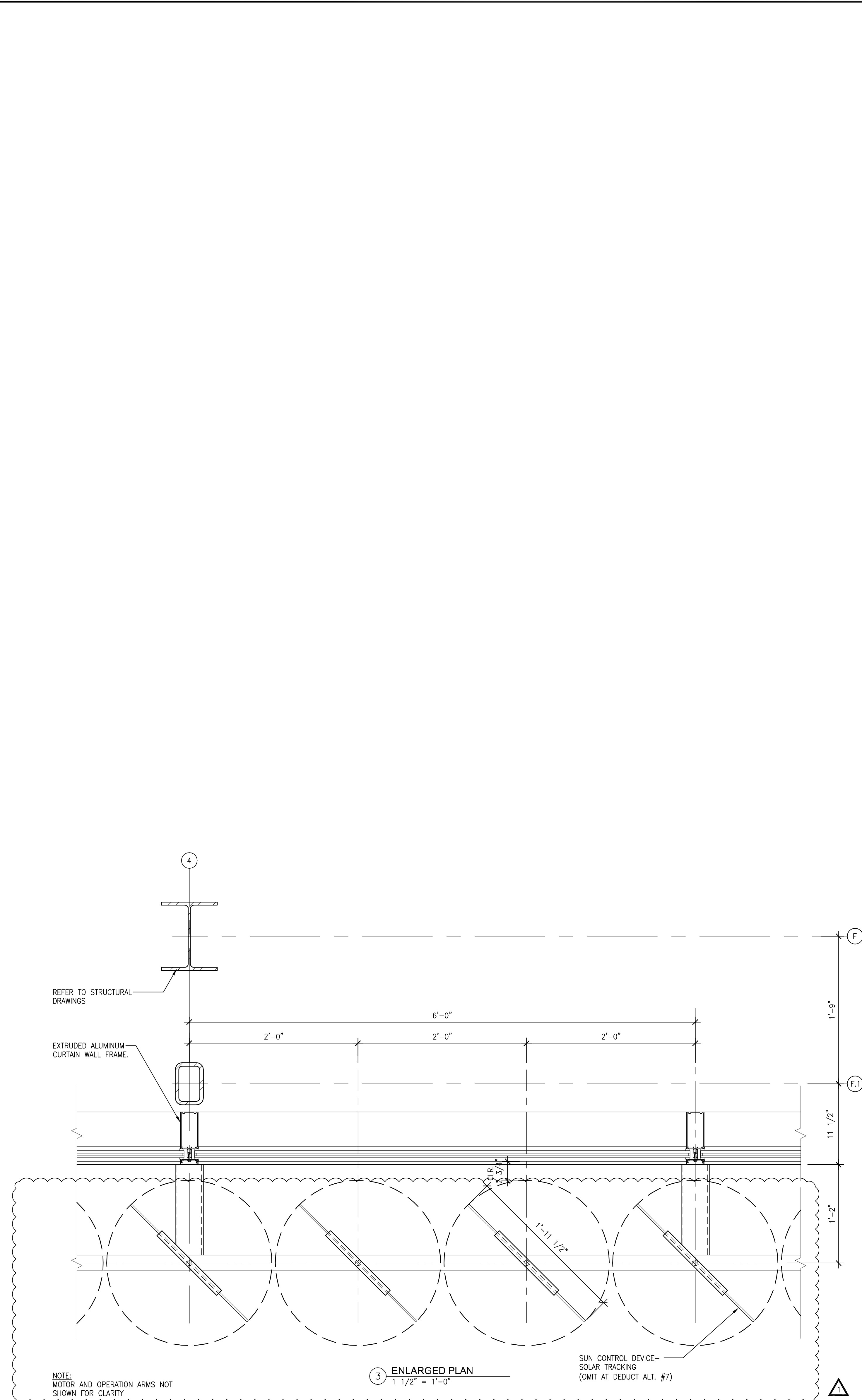


three inches = one foot
one and one half inches = one foot
one inch = one foot
three quarters inch = one foot
one half inch = one foot
three eighths inch = one foot
one quarter inch = one foot
one eighth inch = one foot



	07/22/13	CONSULTANTS:		ARCHITECT/ENGINEERS:	HMC Architects 1827 E. Fir Avenue, Studio 103 / Fresno, CA 93720 T 559 322 2444 / www.hmcarchitects.com	Drawing Title	Project Title		Project Number		Office of Construction and Facilities Management
						BUILDING 24 SEISMIC CORRECTION AND ADDITION		570-215			
						VAMC FRESNO, CA		Building Number 24			
						Date	Checked	Drawn	Drawing Number		
						March 12, 2013	BB	CLO	AS605 Dwg. 62 of 176		
Revisions	Date					Approved Project Director					