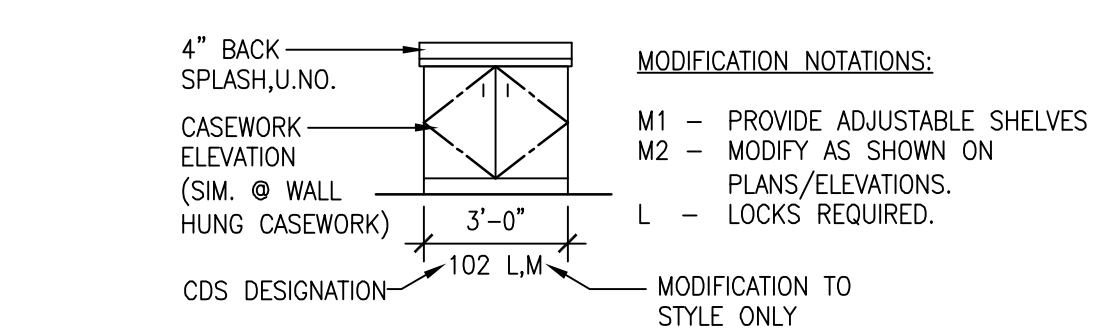


- CASEWORK NOTES**
1. INSULATE HOT WATER & DRAIN PIPES AT SINKS. THERE SHALL BE NO SHARP OR ABRASIVE OBJECTS OR SURFACES UNDER LAVATORIES OR SINKS.
 2. PROVIDE PLASTIC LAMINATE FINISH AT ALL EXPOSED CASWORK SURFACES INCLUDING, BUT NOT LIMITED TO: END PANELS, KNEE SPACES, NICHES & CUBBIES.
 3. CASWORK DESIGN SERIES (CDS): (REFER TO THE ARCHITECTURAL WOODWORK STANDARDS EDITION 1, 2009)



- LEGEND**
- NEW GYPSUM WALLBOARD. FINISH TO MATCH EXISTING WALL TEXTURE. REFER TO FINISH SCHEDULE AND FLOOR PLAN FOR ADDITIONAL INFO.
 - (E) GYPSUM WALLBOARD TO REMAIN. REFINISH TO MATCH EXISTING WALL TEXTURE AFTER (E) WALLCOVERING IS REMOVED. REFER TO FINISH SCHEDULE AND FLOOR PLAN FOR ADDITIONAL INFO.
 - (E) GYPSUM WALLBOARD TO REMAIN. REFER TO FINISH SCHEDULE AND FLOOR PLAN FOR ADDITIONAL INFO.

(P1) INDICATES FINISH COLOR. REFER TO SCHEDULE FOR FINISHES (09 06 00) FINISH TYPE AND COLOR.

INTERIOR ELEVATION - REMODEL KEYNOTES

- 1 NEW RUBBER BASE, TYP. REFER TO FINISH SCHEDULE. (MATCH EXISTING WHERE OCCURS), U.N.O.
- 2 NEW SUSPENDED ACT CEILING, TYP. REFER TO CEILING PLAN FOR TYPE.
- 3 (E) ELEVATOR DOOR.
- 4 NEW DOOR AND FRAME. SEE FLOOR PLAN AND DOOR SCHEDULE FOR TYPE, TYP.
- 5 NEW ALUMINUM CURTAIN WALL SYSTEM AND GLAZING
- 6 STEEL COLUMN, AESS, PAINT. REFER TO STRUCTURAL DRAWINGS.
- 7 NEW ELEVATOR DOOR
- 8 NEW ALUMINUM STOREFRONT SYSTEM. SEE FLOOR PLAN FOR WINDOW TYPE.
- 9 BRACE FRAME, AESS, PAINT. REFER TO STRUCTURAL DRAWINGS.
- 10 PAPER TOWEL DISPENSER. REFER TO SPEC SECTION 10 28 00.
- 11 SOAP DISPENSER. REFER TO SPEC SECTION 10 28 00.
- 12 HAND SANITIZER DISPENSER, REFER TO SPEC. SECTION 10 80 00.
- 13 LITERATURE RACK, REFER TO SPEC. SECTION 10 80 00.
- 14 WASTE RECEPTACLE (N.I.C.)
- 15 SHARPS CONTAINER, REFER TO SPEC. SECTION 10 80 00.
- 16 GLOVE DISPENSER, REFER TO SPEC. SECTION 10 80 00.

PROVIDE WARM SHELL SPACE ONLY AT DEDUCT ALTERNATE #8. SEE 2/AS203

2

	07/25/13	CONSULTANTS:		ARCHITECT/ENGINEERS: HMC Architects 1827 E. Fir Avenue, Studio 103 / Fresno, CA 93720 T 559 322 2444 / www.hmcarchitects.com	Drawing Title THIRD FLOOR INTERIOR ELEVATIONS	Project Title BUILDING 24 SEISMIC CORRECTION AND ADDITION	Project Number 570-215 Building Number 24	Office of Construction and Facilities Management
Revisions	Date				Approved Project Director	Location VAMC FRESNO, CA	Drawing Number AS807 Dwg. 74 of 176	
						Date March 12, 2013	Checked BB	
						Drawn CLO		