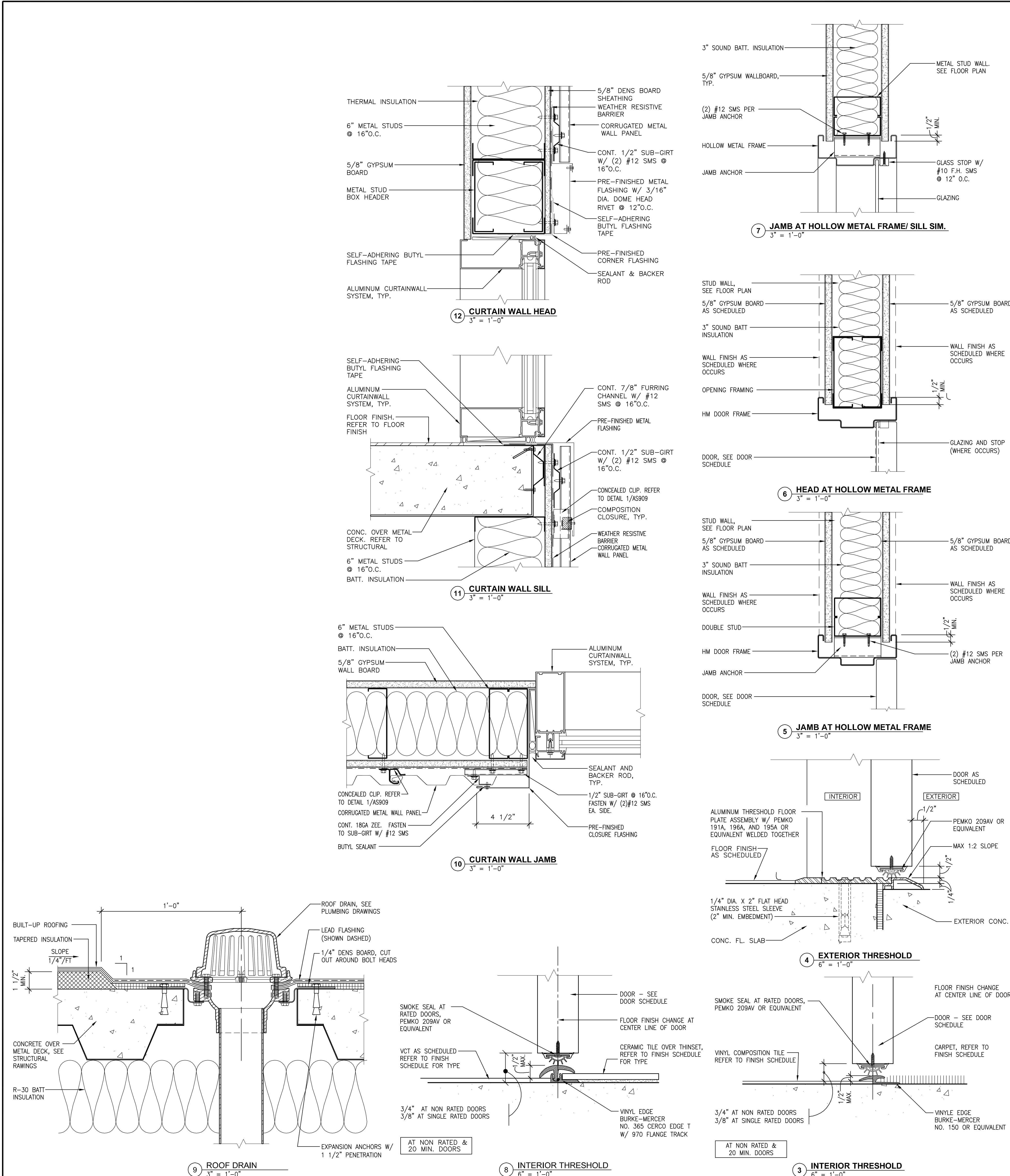
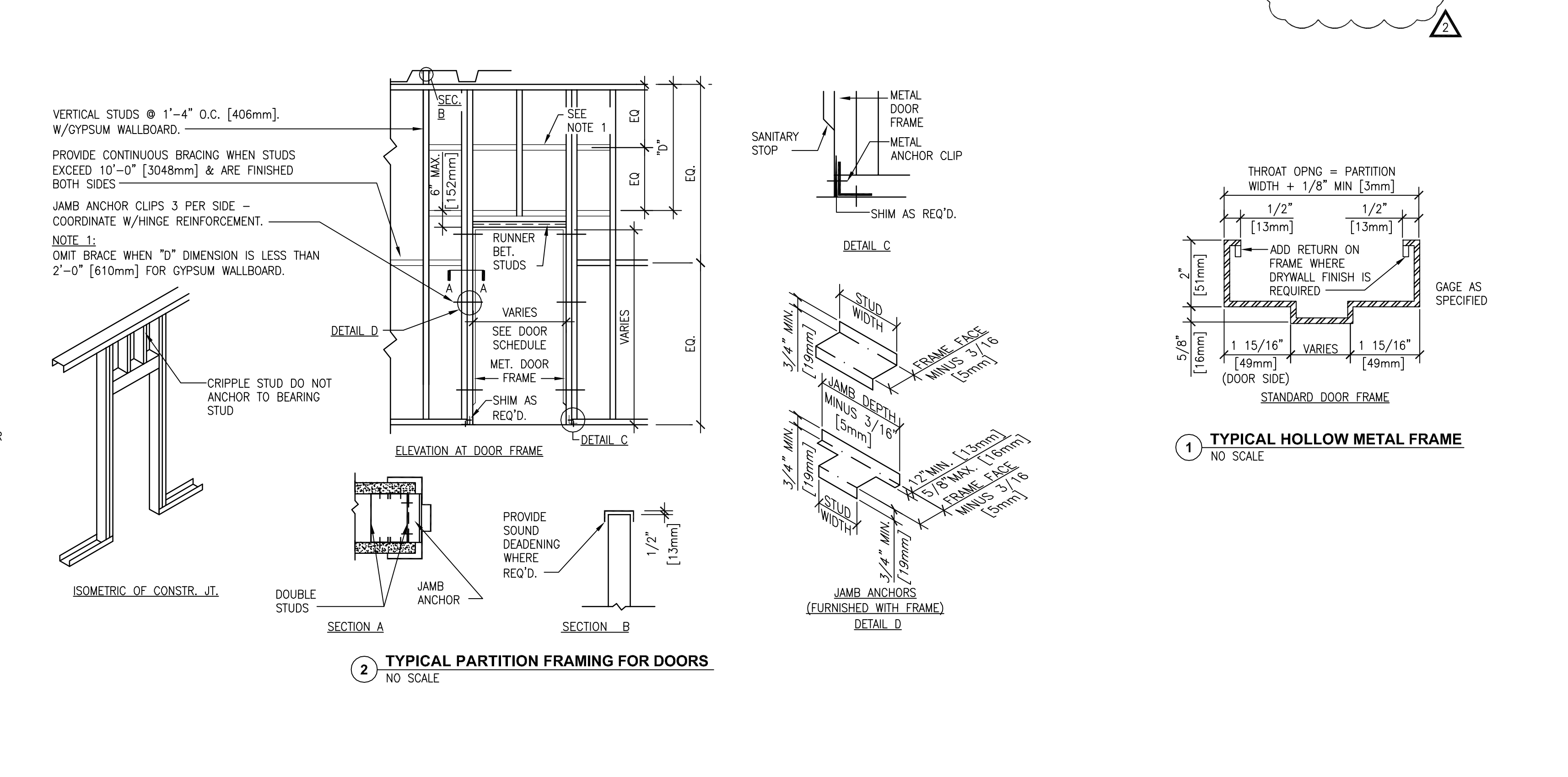


three inches = one foot
one and one half inches = one foot
one inch = one foot
three quarters inch = one foot
one half inch = one foot
three eighths inch = one foot
one quarter inch = one foot
one eighth inch = one foot



THIRD FLOOR DOOR SCHEDULE																					
DOOR NUMBER	DOOR										FRAME							HARDWARE GROUP	FIRE RATING (MINUTES)	SIGN DETAIL	REMARKS
	NOMINAL SIZE			TYPE	MATERIAL	FACING / FINISH	COLOR	GLASS	LOUVER		TYPE	MATERIAL	FINISH	GLASS	DETAILS						
	WIDTH	HEIGHT	THICKNESS						WIDTH	HEIGHT					HEAD	JAMB	THRESHOLD				
300A	3'-8"	7'-0"	1 3/4"	(E) 2	HM	-	-	(E)WG	-	-	(E) A	HM	MP	-	-	-	-	11	90	-	-
300B	3'-8"	7'-0"	1 3/4"	(E) 2	HM	-	-	(E)WG	-	-	(E) C	HM	MP	WG	-	-	-	11	90	-	-
301A	3'-0"	7'-0"	1 3/4"	(E) 1	WD	-	-	-	-	-	(E) A	HM	MP	-	-	-	-	03A	-	-	-
302A	3'-0"	7'-0"	1 3/4"	1	WD	-	-	-	-	-	A	HM	MP	-	6/AS902	5/AS902	8/AS902	12	-	-	-
303A	3'-0"	7'-0"	1 3/4"	(E) 1	WD	-	-	(E)WG	-	-	(E) A	HM	MP	-	-	-	-	13A	-	-	-
304A	3'-0"	7'-0"	1 3/4"	(E) 1	WD	-	-	-	-	-	(E) A	HM	MP	-	-	-	8/AS902	02	-	-	-
305A	3'-0"	7'-0"	1 3/4"	(E) 1	WD	-	-	-	-	-	(E) A	HM	MP	-	-	-	-	03A	-	-	-
305B	3'-0"	7'-0"	1 3/4"	(E) 1	WD	-	-	-	-	-	(E) A	HM	MP	-	-	-	-	03A	-	-	-
306A	3'-6"	7'-0"	1 3/4"	(E) 1	WD	-	-	-	-	-	(E) A	HM	MP	-	-	-	3/AS902	07A	-	-	-
306B	3'-6"	7'-0"	1 3/4"	(E) 1	WD	-	-	-	-	-	(E) A	HM	MP	-	-	-	-	07A	-	-	-
306C	3'-0"	7'-0"	1 3/4"	(E) 1	WD	-	-	-	-	-	(E) A	HM	MP	-	-	-	-	13B	90	-	-
307A	3'-0"	7'-0"	1 3/4"	(E) 1	WD	-	-	-	-	-	(E) A	HM	MP	-	-	-	-	15	-	-	-
308A	4'-8"	7'-0"	1 3/4"	(E) 1	WD	-	-	-	20"	11"	(E) B	HM	MP	-	-	-	-	17	-	-	-
309A	3'-0"	7'-0"	1 3/4"	(E) 1	WD	-	-	-	28"	11"	(E) A	HM	MP	-	-	-	-	13A	-	-	-
310A	3'-0"	7'-0"	1 3/4"	1	WD	-	-	-	-	-	A	HM	MP	-	6/AS902	5/AS902	8/AS902	12	-	-	-
310B	3'-0"	7'-0"	1 3/4"	1	WD	-	-	-	-	-	A	HM	MP	-	6/AS902	5/AS902	8/AS902	12	-	-	-
311A	3'-0"	7'-0"	1 3/4"	(E) 1	WD	-	-	-	-	-	(E) A	HM	MP	-	-	-	-	15	-	-	-
312A	3'-0"	7'-0"	1 3/4"	(E) 1	WD	-	-	-	-	-	(E) A	HM	MP	-	-	-	-	15	-	-	-
313A	3'-0"	7'-0"	1 3/4"	(E) 1	WD	-	-	-	-	-	(E) A	HM	MP	-	-	-	-	15	-	-	-
314A	3'-0"	7'-0"	1 3/4"	(E) 1	WD	-	-	-	-	-	(E) A	HM	MP	-	-	-	-	15	-	-	-
315A	3'-0"	7'-0"	1 3/4"	(E) 1	WD	-	-	-	-	-	(E) A	HM	MP	-	-	-	-	15	-	-	-
316A	3'-0"	7'-0"	1 3/4"	(E) 1	WD	-	-	-	-	-	(E) A	HM	MP	-	-	-	-	15	-	-	-
317A	3'-0"	7'-0"	1 3/4"	(E) 1	WD	-	-	-	-	-	(E) A	HM	MP	-	-	-	-	15	-	-	-
318A	3'-0"	7'-0"	1 3/4"	(E) 1	WD	-	-	-	-	-	(E) A	HM	MP	-	-	-	-	15	-	-	-
319A	3'-0"	7'-0"	1 3/4"	(E) 1	WD	-	-	-	-	-	(E) A	HM	MP	-	-	-	-	15	-	-	-
320A	3'-0"	7'-0"	1 3/4"	(E) 1	WD	-	-	-	-	-	(E) A	HM	MP	-	-	-	-	15	-	-	-
321A	3'-0"	7'-0"	1 3/4"	1	WD	-	-	-	-	-	A	HM	MP	-	6/AS902	5/AS902	-	19	-	-	-
321B	3'-0"	7'-0"	1 3/4"	(E) 1	WD	-	-	-	-	-	(E) A	HM	MP	-	-	-	-	06	-	-	-
322A	3'-0"	7'-0"	1 3/4"	(E) 1	WD	-	-	-	-	-	(E) A	HM	MP	-	-	-	-	15	-	-	-
323A	3'-0"	7'-0"	1 3/4"	(E) 1	WD	-	-	-	-	-	(E) A	HM	MP	-	-	-	-	15	-	-	-
324A	3'-0"	7'-0"	1 3/4"	(E) 1	WD	-	-	-	-	-	(E) A	HM	MP	-	-	-	-	15	-	-	-
325A	3'-0"	7'-0"	1 3/4"	(E) 1	WD	-	-	-	-	-	(E) A	HM	MP	-	-	-	-	15	-	-	-
326A	3'-0"	7'-0"	1 3/4"	(E) 1	WD	-	-	-	-	-	(E) A	HM	MP	-	-	-	-	15	-	-	-
327A	3'-6"	7'-0"	1 3/4"	(E) 1	WD	-	-	-	-	-	(E) A	HM	MP	-	-	-	-	15	-	-	-
329A	3'-6"	7'-0"	1 3/4"	(E) 1	WD	-	-	-	-	-	(E) A	HM	MP	-	-	-	-	02	-	-	-
329B	3'-0"	7'-0"	1 3/4"	(E) 1	WD	-	-	-	-	-	(E) A	HM	MP	-	-	-	-	15	-	-	-
331A	6'-0"	7'-0"	1 3/4"	PR 1	WD	-	-	-	-	-	B	HM	MP	-	6/AS902	5/AS902	3/AS902	21	-	-	-
332A	3'-0"	7'-0"	1 3/4"	1	WD	-	-	-	-	-	A	HM	MP	-	6/AS902	5/AS902	3/AS902	18	-	-	-
332B	3'-0"	7'-0"	1 3/4"	1	WD	-	-	-	-	-	A	HM	MP	-	6/AS902	5/AS902	-	18	-	-	OMIT AT DEDUCT ALT #8
333A	3'-0"	7'-0"	1 3/4"	1	WD	-	-	-	-	-	A	HM	MP	-	6/AS902	5/AS902	3/AS902	18	-	-	-
333B	3'-0"	7'-0"	1 3/4"	A1	ALM	-	-	T2	-	-	-	ALM	FF	-	28/AS910	31 & 32 / AS910	-	19	-	-	OMIT AT DEDUCT ALT #8
334A	3'-0"	7'-0"	1 3/4"	1	WD	-	-	-	-	-	A	HM	MP	-	6/AS902	5/AS902	-	19	-	-	OMIT AT DEDUCT ALT #8
335A	3'-0"	7'-0"	1 3/4"	1	WD	-	-	-	-	-	A	HM	MP	-	6/AS902	5/AS902	3/AS902	18	-	-	-
335B	3'-0"	7'-0"	1 3/4"	A1	ALM	-	-	T2	-	-	-	ALM	FF	-	28/AS910	31 & 32 / AS910	-	19	-	-	OMIT AT DEDUCT ALT #8
336A	3'-0"	7'-0"	1 3/4"	1	WD	-	-	-	-	-	A	HM	MP	-	6/AS902	5/AS902	-	19	-	-	OMIT AT DEDUCT ALT #8
337A	3'-0"	7'-0"	1 3/4"	1	WD	-	-	-	-	-	A	HM	MP	-	6/AS902	5/AS902	-	19	-	-	OMIT AT DEDUCT ALT #8
338A	3'-6"	7'-0"	1 3/4"	1	WD	-	-	-	-	-	A	HM	MP	-	6/AS902	5/AS902	3/AS902	19A	-	-	OMIT AT DEDUCT ALT #8
339A	3'-6"	7'-0"	1 3/4"	1	WD	-	-	-	-	-	A	HM	MP	-	6/AS902	5/AS902	3/AS902	19A	-	-	OMIT AT DEDUCT ALT #8
340A	3'-6"	7'-0"	1 3/4"	1	WD	-	-	T2	-	-	-	ALM	FF	-	28/AS910	32/AS910	29/AS910	22	-	-	-



Revisions	Date	07/25/13	CONSULTANTS:	ARCHITECT/ENGINEERS:	Drawing Title	DOOR SCHEDULES	Project Title	BUILDING 24 SEISMIC CORRECTION AND ADDITION	Project Number	570-215	Office of Construction and Facilities Management
				HMC Architects	Approved Project Director		Location	VAMC FRESNO, CA	Building Number	24	Department of Veterans Affairs
				1827 E. Fir Avenue, Studio 103 / Fresno, CA 93720 T 559 322 2444 / www.hmcarchitects.com			Date	March 12, 2013	Checked	BB	
							Drawn	CLO			
									AS902	Dwg. 78 of 176	