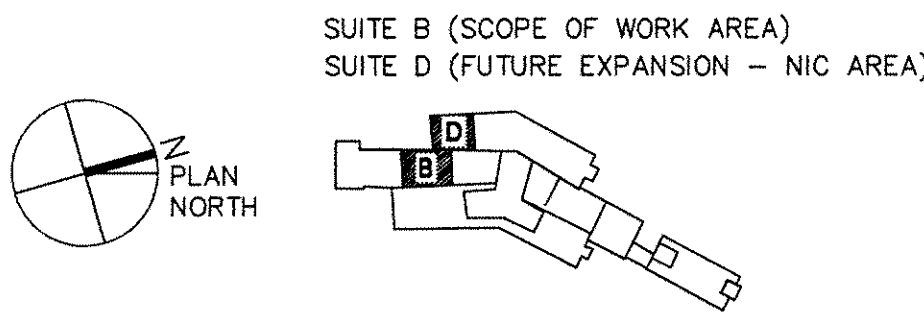


GENERAL NOTES

- ALL FINAL LOCATIONS AND ARRANGEMENTS OF LIGHTING FIXTURES SHALL BE OBTAINED FROM THE ARCHITECTURAL REFLECTED CEILING PLAN.
- (1) EACH BRANCH CIRCUIT HOMERUN SHALL HAVE NO MORE THAN THREE CIRCUITS. EACH BRANCH CIRCUIT HOMERUN SHALL HAVE A SEPARATE GREEN INSULATED EQUIPMENT GROUNDING CONDUCTOR.
- MULTI-GANG BACKBOXES FOR DIFFERENT VOLTAGES AND TYPES OF EMERGENCY AND NORMAL BRANCH WIRING DEVICES SHALL HAVE DIVIDERS BETWEEN DEVICES.



FULLY SPRINKLERED

ELECTRICAL ABBREVIATIONS

1PH	SINGLE-PHASE
2/C	TWO-CONDUCTOR
3/C	THREE-CONDUCTOR
3PH	THREE-PHASE
4/C	FOUR-CONDUCTOR
4W	FOUR-WIRE
A/E	ARCHITECT/ENGINEER
AF	AMPERE FRAME OR AMP FUSE
AFB	ABOVE FINISHED FLOOR
ALT	ALTERNATE
AMP	AMPERE
AT	AMPERE TRIP
AUTO	AUTOMATIC
BFF	BELOW FINISH FLOOR
BLDG	BUILDING
C	CONDUIT
CD	CONSTRUCTION DOCUMENTS
CKT	CIRCUIT
CLG	CEILING
CT	CURRENT TRANSFORMER
CU	COPPER
DC	DIRECT CURRENT
DEMO	DEMOLITION
DIAG	DIAGRAM
DN	DOWN
DWG	DRAWING
EL	ELEVATION
ELEC	ELECTRIC OR ELECTRICAL
EMER	EMERGENCY
EMT	ELECTRICAL METALLIC TUBING
ENCL	ENCLOSURE
EPO	EMERGENCY POWER OFF
EPFR	EXPLOSION PROOF
EW	ELECTRIC WATER COOLER
EW	ELECTRIC WATER HEATER
EXIST	EXISTING
FA	FIRE ALARM
FACP	FIRE ALARM CONTROL PANEL
FIXT	FIXTURE
FLA	FULL LOAD AMPS
FT	FEET OR FOOT
FU	FUSED SWITCH
SW	GROUND OR GENERATOR
G/GND	GROUND FAULT CIRCUIT
GFCI	INTERUPTR
HP	HORSEPOWER
J-BOX	JUNCTION BOX
KV	KILOVOLT
kVA	KILOVOLT AMPERE
kVAH	KILOVOLT AMPERE PER HOUR
kVAR	KILOVOLT AMPERE REACTIVE
kW	KILOWATT
kWH	KILOWATT HOUR
kWHM	KILOWATT HOUR METER
MATV	MASTER ANTENNA TELEVISION SYSTEM
MAX	MAXIMUM
MCA	MINIMUM CIRCUIT AMPS
MCB	MAIN CIRCUIT BREAKER
MLO	MAIN LUGS ONLY
MTD	MOUNTED
MTG	MOUNTING
NEC	NATIONAL ELECTRICAL CODE
NEMA	NATIONAL ELECTRICAL MANUFACTURERS ASSOCIATION
NEUT/N	NEUTRAL
NFPA	NATIONAL FIRE PROTECTION ASSOCIATION
NTS	NOT TO SCALE
P	POLE
PH	PHASE
PNL	PANEL
PWR	POWER
RM	ROOM
SF	SQUARE FOOT (FEET)
SPEC	SPECIFICATION
SW	SWITCH
TVSS	TRANSIENT VOLTAGE SURGE SUPPRESSION
TYP	TYPICAL
UGND	UNDERGROUND
UON	UNLESS OTHERWISE NOTED
VA	VOLT AMPERE
VOLT	VOLTAGE
W	WATT
WP	WEATHERPROOF
XFMR	TRANSFORMER

ELECTRICAL SYMBOLS

	MOTOR, SINGLE-PHASE		OUTLET TELEPHONE; LETTER INDICATES AS FOLLOWS: J = JACK TYPE W = WALL TYPE
	MOTOR, THREE-PHASE		OUTLET DATA ONLY
	JUNCTION BOX		OUTLET DATA, FLOOR
	BRANCH CIRCUIT HOMERUN. LINES INDICATE NUMBER OF CIRCUITS, NEUTRAL, AND SWITCH LEG CONDUCTORS. ONE SEPARATE GREEN GROUNDING CONDUCTOR SHALL BE PROVIDED FOR EACH HOMERUN; NOT SHOWN		OUTLET DATA, C = CEILING MOUNT
	PULL BOX		OUTLET; LETTER INDICATES AS FOLLOWS: A = AUDIO V = VIDEO I = INTERCOM
	PANELBOARD CABINET, SURFACE MOUNTED		SPEAKER, CEILING MOUNTED, "X" INDICATES THE TYPE, PROVIDE SCHEDULE ON LEGEND
	RECEPTACLE, DUPLEX		SPEAKER, WALL MOUNTED, "X" INDICATES THE TYPE, PROVIDE SCHEDULE ON LEGEND. MTD 7'-6" [2286mm] AFF UNLESS OTHERWISE NOTED. OUTLET, TELEVISION
	RECEPTACLE, DUPLEX MOUNTED 3" ABOVE COUNTER TOP/ COUNTER TOP BACK SPLASH		BLANK = 4 11/16" [119mm] MASTER ANTENNA OUTLET BOX W/BLANK COVER, MTD. 18" [457mm] AFF UNLESS OTHERWISE NOTED.
	RECEPTACLE, DUPLEX, FIRE RATED POKE-THRU ASSEMBLY		C = CAMERA (CCTV SYSTEM), MTD 18" [457mm] AFF
	RECEPTACLE, QUADRUPLEX, FIRE RATED POKE-THRU ASSEMBLY		M = MONITOR (CCTV SYSTEM)
	RECEPTACLE, DUPLEX, C = CEILING MOUNT		NURSE'S CALL MASTER STATION MTD ON NURSE'S COUNTER TOP UNLESS OTHERWISE NOTED.
	RECEPTACLE, DUPLEX WITH GROUND FAULT CIRCUIT INTERRUPTER		NURSE CALL TERMINAL CABINET.
	RECEPTACLE, QUADRUPLEX		NURSE CALL STATION.
	RECEPTACLE, SINGLE		INDICATORS AT MASTER STATION MTD 5'-0" [1524mm] AFF UNLESS OTHERWISE NOTED.
	RECEPTACLE, SPECIAL PURPOSE A = 120V, 20A, 1 PHASE, 2-POLE, 3W, NEMA 5-20R. B = 208V, 20A, 1 PHASE, 2-POLE, 3W, NEMA 6-20R. C = 120V, 30A, 1 PHASE, 2-POLE, 3W, NEMA 5-30R. D = 208V, 30A, 1 PHASE, 2-POLE, 3W, NEMA 6-30R. E = 208V, 60A, 1 PHASE, 3-POLE, 4W, NEMA 14-60R. F = 208V, 30A, 3 PHASE, 3-POLE, 4W, NEMA 15-30R. G = 208V, 50A, 3 PHASE, 3 POLE, 4W, NEMA 15-30R. H = 208V, 60A, 3 PHASE, 3 POLE, 4W, NEMA 15-60R.		D = DUTY STATION, MTD 5'-0" [1524mm] AFF UNLESS NOTED OTHERWISE.
	DISCONNECT SWITCH, FUSED		E = MTD 6'-0" [1829mm] AFF FOR SHOWER LOCATION, MTD 4'-6" [1372mm] AFF FOR TUB LOCATION, & MTD 3'-0" [914mm] AFF FOR TOILET LOCATION.
	DISCONNECT SWITCH, UNFUSED		P = PSYCHIATRIC CORRIDOR STATION WITH KEY SWITCH
	STARTER, COMBINATION WITH DISCONNECT SWITCH		S = AUDIO VISUAL WALL STATION (STAFF) MTD 5'-0" [1524mm] AFF UNLESS OTHERWISE NOTED.
	STARTER OR MOTOR CONTROLLER		U = UTILITY CALL STATION, MTD 5'-0" [1524mm] AFF UNLESS OTHERWISE NOTED.
	VENTILATOR OR FAN COIL UNIT OUTLET		2 = NURSE'S CALL DOME LIGHT (SUFFIX INDICATES No OF LAMP) MTD 6" [152mm] ABOVE DOOR.
	CONDUIT TERMINATED 6" [152mm] AFF IN STANDARD BOX FOR EXTENSION TO EQUIPMENT AS DIRECTED.		D = CORRIDOR DOME LIGHT.
	CONDUIT TERMINATED W/COUPLING (FLUSH W/FINISHED FLOOR) FOR EXTENSION TO EQUIPMENT AS DIRECTED.		I = AUXILIARY INTERSECTIONAL DOME LIGHT.
	AUDIO DEVICE; LETTER INDICATES AS FOLLOWS: M=Mount C=CEILING D=DESK F=FLUSH H=HIDDEN W=WALL P=PEDESTAL R=RACK S=SURFACE T=TECHNOLOGY/TYPE B=BELL C=CHIME H=HORN K=KLAXON L=LISTEN-IN W=MICROPHONES-SOUNDER S=SPEAKER Z=BUZZER		CARD READER
	FIBER OPTIC MODULE; LETTER INDICATES AS FOLLOWS: M=Mount C=CEILING D=DESK F=FLUSH H=HIDDEN W=WALL P=PEDESTAL R=RACK S=SURFACE T=TECHNOLOGY/TYPE R=RECEIVER T=TRANSCIEVER TX=TRANSMITTER		TELEPHONE TERMINAL CABINET
	OUTLET, COMBINATION TELEPHONE/DATA COMMUNICATION		TELEPHONE BACKBOARD (WALL MOUNTED)
	OUTLET, COMBINATION TELEPHONE/DATA COMMUNICATION, FIRE RATED POKE-THRU ASSEMBLY		LIGHT FIXTURE, RECESSED FLUORESCENT, 2'x2' LETTER INDICATES TYPE.
	CABLE TELEVISION LINE = CATV		LIGHT FIXTURE, RECESSED FLUORESCENT, 2'x4' LETTER INDICATES TYPE.
	CLOSED CIRCUIT TELEVISION LINE = CCTV, MINIMUM 1" [25mm] CONDUIT		LIGHT FIXTURE CEILING MOUNTED
	FIBEROPTICS LINE = FO		LIGHT FIXTURE, WALL MOUNTED
	TELEPHONE LINE = T		EXIT SIGN, WALL MOUNTED WITH DIRECTIONAL ARROWS AND FACES AS SHOWN
	INTERCOM LINE = I, MINIMUM 3/4" [19mm] CONDUIT.		SWITCH BLANK = SINGLE POLE 3 = THREE-WAY 4 = FOUR-WAY D = DIMMER K = KEY OPERATED No = OCCUPANCY SENSOR MoD = OCCUPANCY SENSOR WITH DIMMING CAPABILITIES T = TIMER OPERATED EXM = ADDITIONAL LAMPS IN EXAM LIGHT
	SOUND LINE = S		
	NURSE CALL LINE = NC, MINIMUM 3/4" [19mm] CONDUIT.		
	RADIO CONDUIT RUN, MINIMUM 3/4" [19mm] CONDUIT.		

BID SUBMISSION	07/18/2013	CONSULTANTS:	ARCHITECT/ENGINEERS:	PROFESSIONAL SEALS:	Dr. John J. Sanderson MD : Patient Care Center Director	Drawing Title	Project Title	Project Number	Engineering Service Department of Veterans Affairs
			ELLERBE BECKET		Abigail Rodriguez RN : Program Management Officer	ELECTRICAL ABBREVIATIONS, SYMBOL LIST AND GENERAL NOTES	JAMES J. PETERS VA MEDICAL CENTER BRONX NEW YORK RENOVATE PRIMARY CARE SUITE B	526-13-106	
					Esther Hicken RN : Clinical Nurse Manager	Approved: Director, VAHVCs	Location	Building Number	
					Richard Joao : Safety and Occupational Health Manager	Approved: Chief of Engineering : Michael Ong	BRONX NEW YORK	100	
Revisions	Date						Date	Drawing Number	
							18 JULY 2013	E0001	
							Checked	Drawn	Dwg. 28 of 47

three inches = one foot
one and one half inches = one foot
one inch = one foot
three quarters inch = one foot
one half inch = one foot
three eighths inch = one foot
one quarter inch = one foot
one eighth inch = one foot



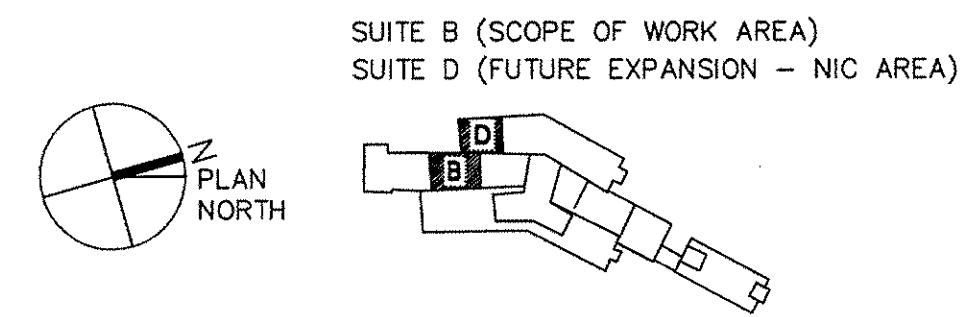
1 ELECTRICAL FIRST FLOOR DEMOLITION PLAN
SCALE: 1/4"=1'-0"

GENERAL NOTES - DEMOLITION





- FOR SYMBOL LIST AND ABBREVIATIONS SEE DRAWING E001.
- REMOVE ALL LIGHTING FIXTURES IN THE VA MEDICAL CENTER SUITE B. LIGHTING FIXTURES ARE NOT INDICATED ON THIS FLOOR PLAN. EXACT QUANTITIES AND LOCATIONS TO BE DETERMINED IN THE FIELD. ALSO REMOVE ASSOCIATED LIGHTING SWITCHES AND BRANCH CIRCUIT WIRING, CONDUIT, JUNCTION BOXES, SUPPORTS, ETC. BACK TO THE SUPPLYING PANEL. CUT/CAP CONDUITS AT THE AREA OF WORK PERIMETER AND REMOVE CONDUIT WITHIN THE WORK AREA. DISCONNECT WIRING COMPLETELY FROM THE ABANDONED CONDUITS.
- REMOVE ALL RECEPTACLES IN THE VA MEDICAL CENTER SUITE B. RECEPTACLES ARE NOT INDICATED ON THIS FLOOR PLAN. EXACT QUANTITIES AND LOCATIONS TO BE DETERMINED IN THE FIELD. ALSO REMOVE ALL ASSOCIATED BRANCH CIRCUIT WIRING, CONDUIT, JUNCTION BOXES, SUPPORTS, ETC. BACK TO THE SUPPLYING PANEL. CUT/CAP CONDUITS AT THE AREA OF WORK PERIMETER AND REMOVE CONDUIT WITHIN THE WORK AREA. DISCONNECT WIRING COMPLETELY FROM THE ABANDONED CONDUITS.
- REMOVE ALL LOW VOLTAGE DEVICES IN THE VA MEDICAL CENTER SUITE B, INCLUDING DATA, TELEPHONE, ETC. LOW VOLTAGE DEVICES ARE NOT INDICATED ON THIS FLOOR PLAN. EXACT QUANTITIES AND LOCATIONS TO BE DETERMINED IN THE FIELD. ALSO REMOVE ALL ASSOCIATED CABLE BACK TO THE SUPPLYING RACK.
- REMOVE ALL PA SPEAKERS, LOCAL VOLUME CONTROLS AND LOCAL PAGING DEVICES IN THE VA MEDICAL CENTER SUITE B. PA SPEAKERS, LOCAL VOLUME CONTROLS AND LOCAL PAGING DEVICES ARE NOT INDICATED ON THIS FLOOR PLAN. EXACT QUANTITIES AND LOCATIONS TO BE DETERMINED IN THE FIELD. ALSO REMOVE ALL ASSOCIATED CABLE BACK TO THE SUPPLYING RACK.
- REMOVE ALL ACCESSIBLE ABANDONED WIRING OF ALL TYPES, OR CAP AND LABEL IN JUNCTION BOX FOR RE-USE, IN COMPLIANCE WITH THE NATIONAL ELECTRIC CODE.
- MAINTAIN AND RESTORE, IF INTERRUPTED ALL CONDUITS AND CONDUCTORS PASSING THROUGH RENOVATED AREAS AND SERVICING UNDISTURBED AREAS.

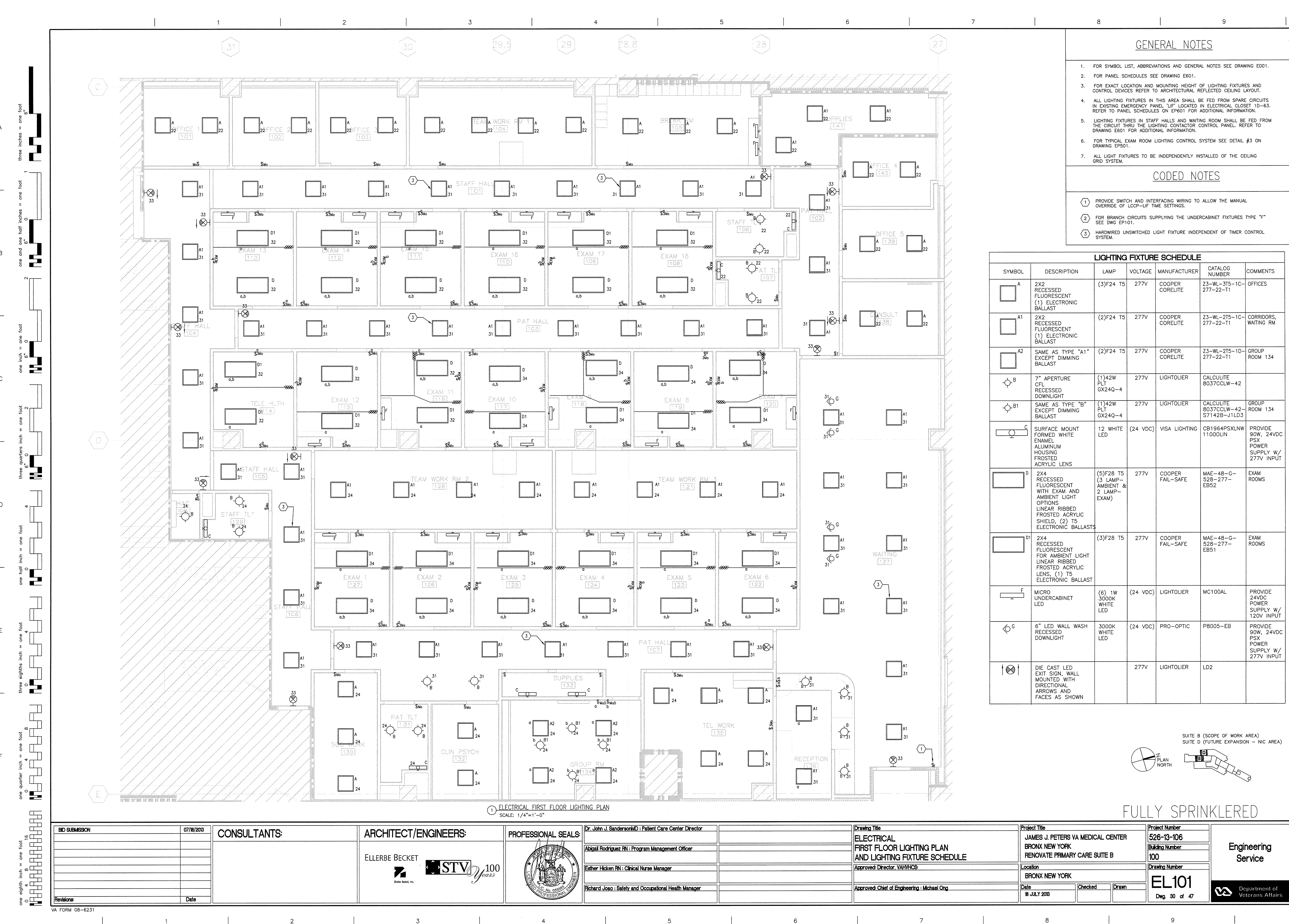
CODED NOTES

- 1 SPRINT WILL REMOVE AND REINSTALL THEIR WIRELESS TRANSMITTERS IN THE VA MEDICAL CENTER SUITE. COORDINATE DEMOLITION WORK WITH SPRINT.



FULLY SPRINKLERED

BID SUBMISSION		07/18/2013	CONSULTANTS:		ARCHITECT/ENGINEERS:		PROFESSIONAL SEALS:		Drawing Title		Project Title		Project Number		Engineering Service	
					ELLERBE BECKET				ELECTRICAL		JAMES J. PETERS VA MEDICAL CENTER		526-13-106			
					  100 Years				FIRST FLOOR DEMOLITION PLAN		BRONX NEW YORK		Building Number			
					State Seals, Inc.				Approved: Director, VAHMCs		RENOVATE PRIMARY CARE SUITE B		100			
							Abigail Rodriguez RN : Program Management Officer				Location		Drawing Number		 Department of Veterans Affairs	
							Esther Hicken RN : Clinical Nurse Manager				BRONX NEW YORK		ED101			
							Richard Joao : Safety and Occupational Health Manager		Approved: Chief of Engineering : Michael Ong		Date		Checked			Dwg. 29 of 47
Revisions		Date									18 JULY 2013					



GENERAL NOTES

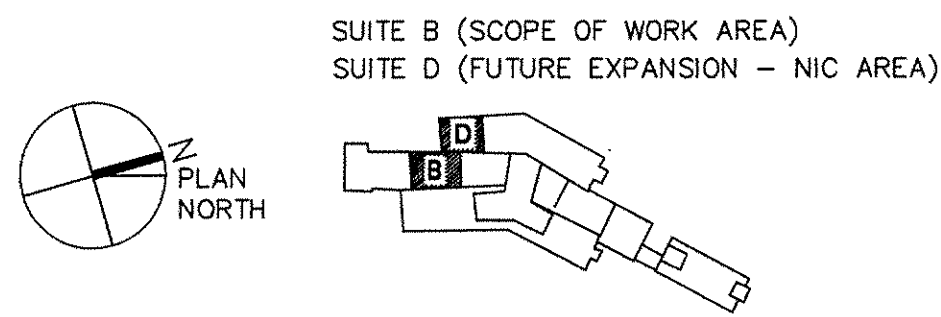
1. FOR SYMBOL LIST, ABBREVIATIONS AND GENERAL NOTES SEE DRAWING E001.
2. FOR PANEL SCHEDULES SEE DRAWING E601.
3. FOR EXACT LOCATION AND MOUNTING HEIGHT OF LIGHTING FIXTURES AND CONTROL DEVICES REFER TO ARCHITECTURAL REFLECTED CEILING LAYOUT.
4. ALL LIGHTING FIXTURES IN THIS AREA SHALL BE FED FROM SPARE CIRCUITS IN EXISTING EMERGENCY PANEL "UP" LOCATED IN ELECTRICAL CLOSET 1D-63. REFER TO PANEL SCHEDULES ON EP601 FOR ADDITIONAL INFORMATION.
5. LIGHTING FIXTURES IN STAFF HALLS AND WAITING ROOM SHALL BE FED FROM THE CIRCUIT THRU THE LIGHTING CONTACTOR CONTROL PANEL. REFER TO DRAWING E601 FOR ADDITIONAL INFORMATION.
6. FOR TYPICAL EXAM ROOM LIGHTING CONTROL SYSTEM SEE DETAIL #3 ON DRAWING EP501.
7. ALL LIGHT FIXTURES TO BE INDEPENDENTLY INSTALLED OF THE CEILING GRID SYSTEM.

CODED NOTES

- ① PROVIDE SWITCH AND INTERFACING WIRING TO ALLOW THE MANUAL OVERRIDE OF LCCP-LIF TIME SETTINGS.
- ② FOR BRANCH CIRCUITS SUPPLYING THE UNDERCABINET FIXTURES TYPE "F" SEE DWG EP101.
- ③ HARDWIRED UNSWITCHED LIGHT FIXTURE INDEPENDENT OF TIMER CONTROL SYSTEM.

LIGHTING FIXTURE SCHEDULE

SYMBOL	DESCRIPTION	LAMP	VOLTAGE	MANUFACTURER	CATALOG NUMBER	COMMENTS
A	2X2 RECESSED FLUORESCENT (1) ELECTRONIC BALLAST	(3)F24 T5	277V	COOPER CORELITE	Z3-WL-3T5-1C-277-22-T1	OFFICES
A1	2X2 RECESSED FLUORESCENT (1) ELECTRONIC BALLAST	(2)F24 T5	277V	COOPER CORELITE	Z3-WL-2T5-1C-277-22-T1	CORRIDORS, WAITING RM
A2	SAME AS TYPE "A1" EXCEPT DIMMING BALLAST	(2)F24 T5	277V	COOPER CORELITE	Z3-WL-2T5-1C-277-22-T1	GROUP ROOM 134
B	7" APERTURE CFL RECESSED DOWNLIGHT	(1)42W PLT GX24Q-4	277V	LIGHTOLIER	CALCULITE 8037CCLW-42	
B1	SAME AS TYPE "B" EXCEPT DIMMING BALLAST	(1)42W PLT GX24Q-4	277V	LIGHTOLIER	CALCULITE 8037CCLW-42-S7142B-J1LD3	GROUP ROOM 134
C	SURFACE MOUNT FORMED WHITE ENAMEL ALUMINUM HOUSING FROSTED ACRYLIC LENS	12 WHITE LED	(24 VDC)	VISA LIGHTING	CB1964PSXLNW 1100LIN	PROVIDE 90W, 24VDC PSX POWER SUPPLY W/ 277V INPUT
D	2X4 RECESSED FLUORESCENT WITH EXAM AND AMBIENT LIGHT OPTIONS LINEAR RIBBED FROSTED ACRYLIC SHIELD, (2) T5 ELECTRONIC BALLASTS	(5)F28 T5 (3 LAMP-AMBIENT & 2 LAMP-EXAM)	277V	COOPER FAIL-SAFE	MAE-48-G-528-277-EB52	EXAM ROOMS
D1	2X4 RECESSED FLUORESCENT FOR AMBIENT LIGHT LINEAR RIBBED FROSTED ACRYLIC LENS, (1) T5 ELECTRONIC BALLAST	(3)F28 T5	277V	COOPER FAIL-SAFE	MAE-48-G-528-277-EB51	EXAM ROOMS
F	MICRO UNDERCABINET LED	(6) 1W 3000K WHITE LED	(24 VDC)	LIGHTOLIER	MC100AL	PROVIDE 24VDC POWER SUPPLY W/ 120V INPUT
G	6" LED WALL WASH RECESSED DOWNLIGHT	3000K WHITE LED	(24 VDC)	PRO-OPTIC	P8005-EB	PROVIDE 90W, 24VDC PSX POWER SUPPLY W/ 277V INPUT
I	DIE CAST LED EXIT SIGN, WALL MOUNTED WITH DIRECTIONAL ARROWS AND FACES AS SHOWN		277V	LIGHTOLIER	LD2	



FULLY SPRINKLERED

BID SUBMISSION	07/18/2013	CONSULTANTS:	ARCHITECT/ENGINEERS:	PROFESSIONAL SEALS:	Dr. John J. Sanderson MD : Patient Care Center Director	Drawing Title	Project Title	Project Number
			ELLERBE BECKET		Abigail Rodriguez RN : Program Management Officer	ELECTRICAL FIRST FLOOR LIGHTING PLAN AND LIGHTING FIXTURE SCHEDULE	JAMES J. PETERS VA MEDICAL CENTER BRONX NEW YORK RENOVATE PRIMARY CARE SUITE B	526-13-106
			STV 100 years		Eather Hicken RN : Clinical Nurse Manager	Approved Director: VAHMCBS	Location	Building Number
					Richard Joao : Safety and Occupational Health Manager	Approved Chief of Engineering : Michael Ong	BRONX NEW YORK	100
Revisions	Date						Date	Drawing Number
							18 JULY 2013	EL101
							Checked	Dwg. 30 of 47
							Drawn	

Engineering Service



GENERAL NOTES

- FOR SYMBOL LIST, ABBREVIATIONS AND GENERAL NOTES SEE DRAWING E001.
- FOR PANEL SCHEDULES SEE DRAWING E601.
- FOR EXACT LOCATION AND MOUNTING HEIGHT OF RECEPTACLES AND CONTROL DEVICES REFER TO ARCHITECTURAL ROOM LAYOUT.

CODED NOTES

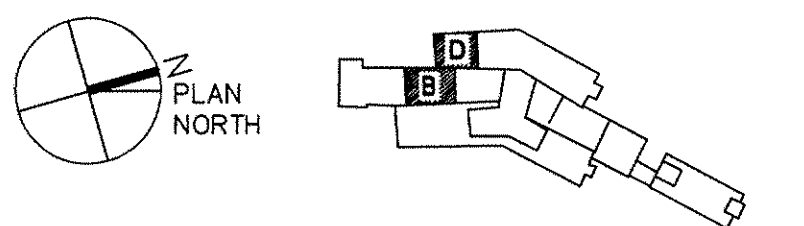
- BRANCH CIRCUIT CONDUITS REFERENCED BY THIS NOTE SHALL BE RUN IN THE CEILING OF THE FLOOR BELOW AND ROUTED VIA FIRE RATED POKE-THRU.
- WHERE REFERENCED BY THIS NOTE PROVIDE ALL NECESSARY POWER AND CONTROL WIRING AND CONDUIT FOR THE INSTALLATION OF AN ADA DOOR OPENER PUSHBUTTON AT THE OUTSIDE OF THE ENTRY DOOR. INSTALL THE PUSHBUTTON, LIMIT SWITCHES, STEP-DOWN TRANSFORMER, TIME DELAY RELAY, ETC. FOR A COMPLETE INSTALLATION OF THIS ADA SYSTEM, AS PER MANUFACTURER'S REQUIREMENTS.

- NEW TVSS
- EXISTING PANEL PIF-SECT-3
- EXISTING PANEL PIF-SECT-2
- EXISTING PANEL PIF-SECT-1
- NEW TVSS
- EXISTING 75 KVA TRANSFORMER
- NEW PANEL PIF-1
- NEW 45 KVA TRANSFORMER (TRAPEZE MOUNTED)
- EXISTING PANEL LIF-SECT-2
- EXISTING PANEL LIF-SECT-1

2 EXISTING ELECTRICAL CLOSET 1D-63

SCALE: 1/4"=1'-0"

SUITE B (SCOPE OF WORK AREA)
SUITE D (FUTURE EXPANSION - NIC AREA)

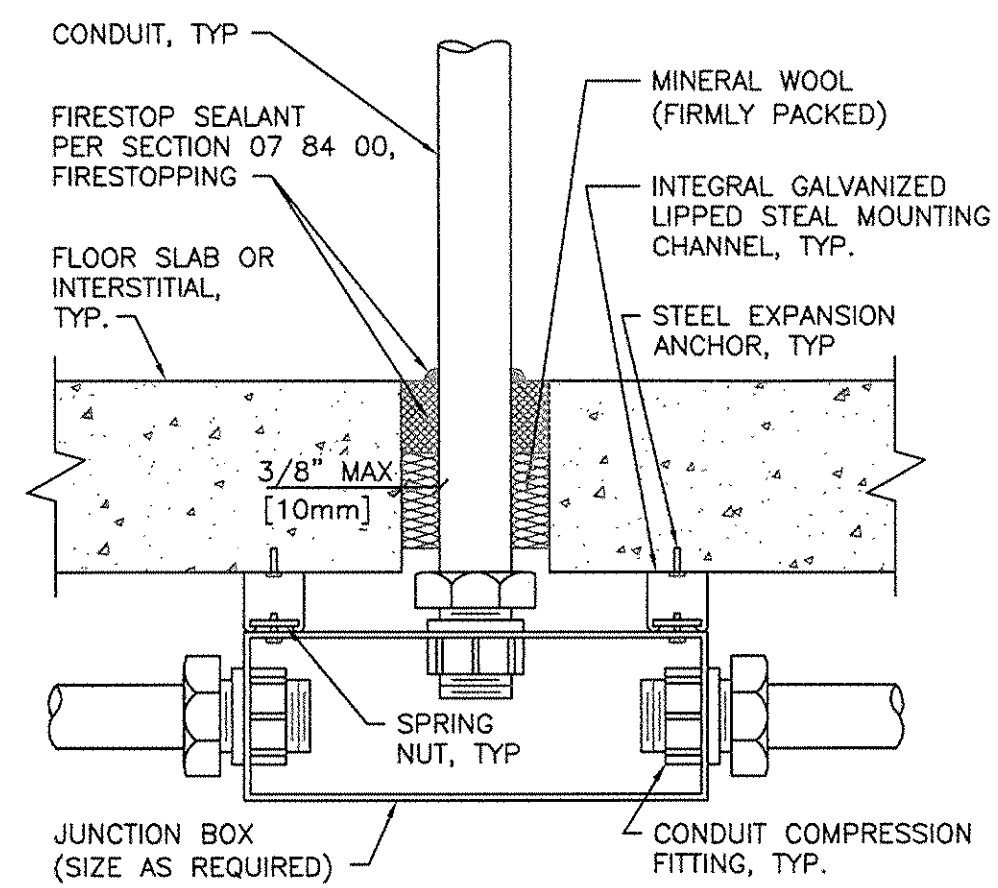


FULLY SPRINKLERED

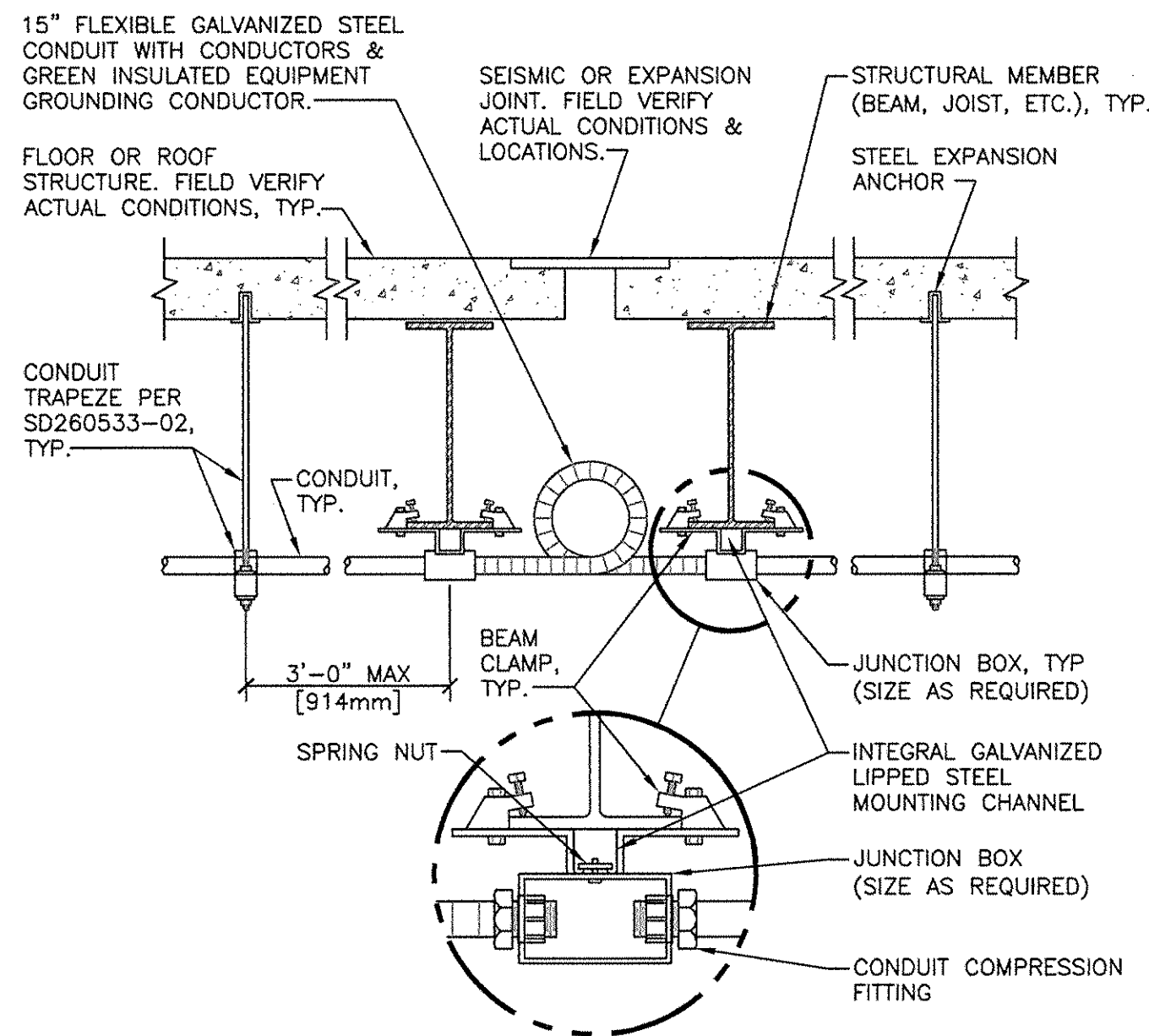
1 ELECTRICAL FIRST FLOOR POWER PLAN
SCALE: 1/4"=1'-0"

BID SUBMISSION 07/18/2013 Revisions: _____ Date: _____	CONSULTANTS: 	ARCHITECT/ENGINEERS: ELLERBE BECKET 	PROFESSIONAL SEALS: 	Dr. John J. Sanderson MD: Patient Care Center Director Abigail Rodriguez RN: Program Management Officer Esther Hicken RN: Clinical Nurse Manager Richard Joao: Safety and Occupational Health Manager	Drawing Title ELECTRICAL FIRST FLOOR POWER PLAN Approved: Director, VA/HVCS Approved: Chief of Engineering: Michael Ong	Project Title JAMES J. PETERS VA MEDICAL CENTER BRONX NEW YORK RENOVATE PRIMARY CARE SUITE B Location BRONX NEW YORK Date 18 JULY 2013 Checked Drawn 	Project Number 526-13-106 Building Number 100 Drawing Number EP101 Dwg. 31 of 47	Engineering Service
--	-----------------------------	---	--------------------------------	--	--	--	---	--------------------------------

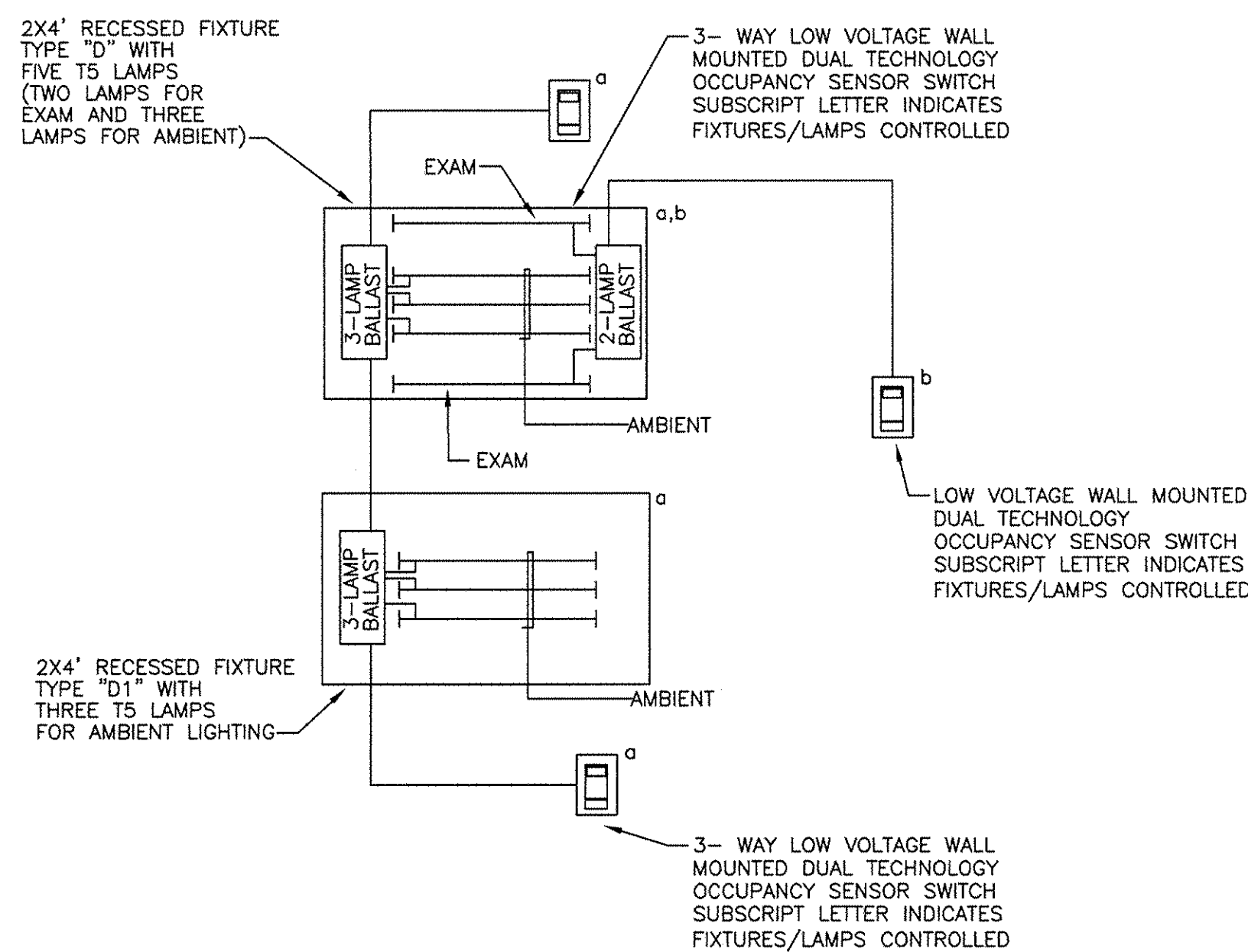
three inches = one foot
one and one half inches = one foot
one inch = one foot
three quarters inch = one foot
three eighths inch = one foot
one quarter inch = one foot
one eighth inch = one foot



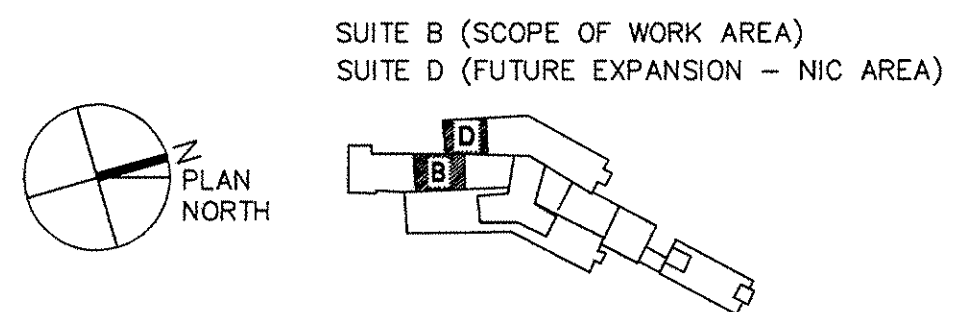
1 FLOOR SLAB PENETRATION DETAIL
NTS



2 CONDUIT JOINT CROSSING DETAIL
NTS



3 TYPICAL EXAM ROOM LIGHTING DETAIL
NTS



FULLY SPRINKLERED

BID SUBMISSION	07/18/2013	CONSULTANTS:	ARCHITECT/ENGINEERS:	PROFESSIONAL SEALS:	Dr. John J. Sanderson MD : Patient Care Center Director	Drawing Title	Project Title	Project Number	Engineering Service Department of Veterans Affairs
			ELLERBE BECKET		Abigail Rodriguez RN : Program Management Officer	ELECTRICAL DETAILS	JAMES J. PETERS VA MEDICAL CENTER BRONX NEW YORK RENOVATE PRIMARY CARE SUITE B	526-13-106	
					Eather Hicken RN : Clinical Nurse Manager	Approved: Director, VA/HVCS	Location	Building Number	
					Richard Joao : Safety and Occupational Health Manager	Approved: Chief of Engineering : Michael Ong	BRONX NEW YORK	100	
Revisions:	Date						Date	Drawing Number	
							18 JULY 2013	EP501	
								Dwg. 32 of 47	

GENERAL NOTES

1. FOR SYMBOLS AND ABBREVIATIONS SEE DRAWING E0001.

LINETYPE LEGEND

- EXISTING FEEDER OR POWER DISTRIBUTION EQUIPMENT TO REMAIN OR BE MODIFIED AS INDICATED
- NEW FEEDER OR POWER DISTRIBUTION EQUIPMENT

CODED NOTES

- EXISTING 277/480V EMERGENCY FEEDER
- EXISTING TRANSFORMER 75 KVA 480V-120/208V
- NEW FEEDER 3 # 4 & 1 # 10 GD - 1" C
- NEW TRANSFORMER 45KVA, 480V-120/208V, TRAPEZE MOUNTED
- NEW FEEDER 4 # 2/0 & 1 # 4GD - 2" C
- NEW ELECTRODE GROUNDING CONDUCTOR FOR NEW TRANSFORMER 1#6-3/4" C CADWELD TO BUILDING STEEL
- PROVIDE EXTERNALLY MOUNTED TRANSIENT VOLTAGE SURGE SUPPRESSION (TVSS) DEVICE. PROVIDE (1) 30A/3P CIRCUIT BREAKER IN THE SPACE OF EXISTING PANEL "PIF". (SEE SPECIFICATION SECTION 264313)

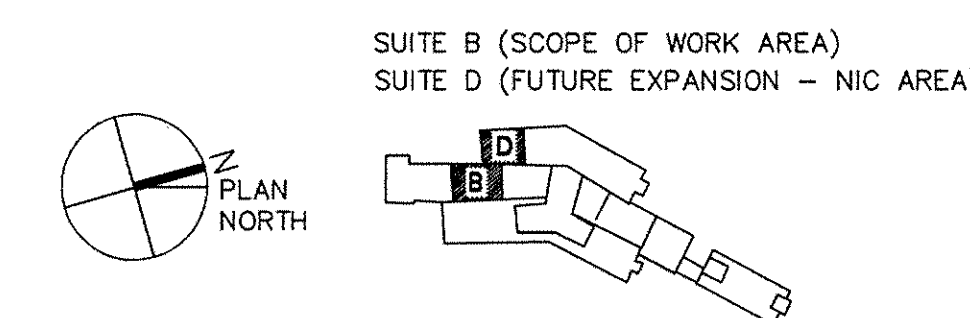
EXISTING PANEL LIF SCHEDULE											
LOCATION: ELEC CLOSET 10-63				277/480V, 3 PHASE, 4 WIRE & GROUND BUS				DESIGNATION: PANEL LIF			
MOUNTING: SURFACE				2 SECTION PANEL W/FED THRU LUGS				MAIN BUS: 600A			
								MAIN CIRCUIT BREAKER: NONE (MLO)			
SERVICE TO:	VA					VA					SERVICE TO:
	#A	#B	#C	#L	#2	#3	#4	#A	#B	#C	
--	--	20 1 1	--	--	--	2	1	20	--	--	--
--	--	20 1 3	--	--	--	4	1	20	--	--	EXISTING
--	--	20 1 5	--	--	--	6	1	25	--	--	EXISTING
EXISTING	--	20 1 7	--	--	--	8	1	20	--	--	EXISTING
EXISTING	--	20 1 9	--	--	--	10	1	20	--	--	EXISTING
EXISTING	--	20 1 11	--	--	--	12	1	35	--	--	--
EXISTING	--	20 1 13	--	--	--	14	1	20	--	--	EXISTING
EXISTING	--	20 1 15	--	--	--	16	1	20	--	--	EXISTING
EXISTING	--	20 1 17	--	--	--	18	1	20	--	--	EXISTING
EXISTING	--	20 1 19	--	--	--	20	1	225	--	--	EXISTING
EXISTING	--	15 1 21	--	--	--	22	1	225	1300	--	OFFICE LIGHTING
EXISTING	--	225 1 23	--	--	--	24	1	50	--	2400	OFFICE LIGHTING
EXISTING	--	15 1 25	--	--	--	26	1	40	--	--	EXISTING
EXISTING	--	20 1 27	--	--	--	28	1	20	200	--	EXISTING CONTACTOR CONTROL PANEL
EXISTING	--	15 1 29	--	--	--	30	1	20	--	--	SPACE
LIGHTING STAFF HALLS & WAITING ROOM 137	2000	20 1 31	--	--	--	32	1	20	2040	--	EXAM ROOMS
EXIT SIGNS	--	20 1 33	100	--	--	34	1	20	2200	--	EXAM ROOMS
SPARE	--	20 1 35	--	--	--	36	1	20	--	--	SPARE
SPACE	--	1 1 37	--	--	--	38	1	20	--	--	--
SPACE	--	1 1 39	--	--	--	40	3	70	--	--	PANEL PIP-P/C (VA 45KVA XFMR)
SPACE	--	1 1 41	--	--	--	42	1	20	--	--	--
VA	#A=	--	--	--	--	#B=	--	--	--	--	#C=
TOTAL VA=	--	--	--	--	--	--	--	--	--	--	--

GENERAL NOTES

- FOR SYMBOL LIST, ABBREVIATIONS AND GENERAL NOTES SEE DRAWING E001.
- ALL FULL HEIGHT WALLS ARE TO BE PROVIDED WITH A CORE-DRILLED OPENING FOR THE PASSAGE OF VOICE AND DATA CONDUITS. ALL WALL PENETRATIONS ARE TO BE SEALED WITH SEALANT UPON COMPLETION OF CABLE INSTALLATION. ALL WALL PENETRATIONS SEALS ARE TO BE UL COMPLIANT ASSEMBLIES AND FIRE RATED WHERE REQUIRED.
- ALL HORIZONTAL CABLES ARE TO BE PROVIDED WITH 12 INCHES OF SLACK CABLE COILED AND STORED INSIDE THE DEVICE OUTLET BOX.
- CABLE TRAYS ARE TO BE INDEPENDENTLY SUPPORTED FROM WALL MOUNTED SUPPORTS/ BRACKETS OR TRAPEZE ASSEMBLIES OR FROM STRUCTURAL SLAB USING TRAPEZE ASSEMBLIES. CABLE TRAYS RUN IN THE CORRIDORS ARE TO BE MOUNTED AT 12" ABOVE THE ACCESSIBLE CEILING. PROVIDE PRE-MANUFACTURED OFFSETS, BENDS, ELBOWS, ETC AS REQUIRED TO PASS ALL BEAMS, MECHANICAL DUCTS, PIPING, ETC AND TO PROVIDE A FOR A CONTINUOUS CABLE TRAY INSTALLATION. REVIEW LOCATION WITH VA PRIOR TO INSTALL.
- PROVIDE WATERFALLS AT EACH CABLE TRAY TERMINATION WHERE THE WALL SLEEVES AND CABLE TRAYS ARE NOT AT ELEVATION THAN THE CABLE TRAYS. ADD WATERFALLS TO THE WALL SLEEVES, SHOULD THE CABLE TRAY BE HIGHER IN ELEVATION THAN THE WALL SLEEVE, ADD A WATERFALL TO THE CABLE TRAY.
- WALL MOUNTED TELEPHONE WITH LUGS WILL BE PLACED 48" A.F.F. UNLESS OTHERWISE NOTED.

CODED NOTES

- WHERE REFERENCED BY THIS NOTE CABLING WILL BE RUN IN THE CEILING FLOOR BELOW ROUTED VIA A FIRE RATED POKE-THRU.
- FOR EACH TELEPHONE/DATA OUTLET RUN FOUR (4) 4 UTP 24AWG CAT 6 CABLES TO TELECOMMUNICATIONS CLOSET (2 VOICE AND 2 DATA CABLES)
- FOR EACH DATA OUTLET RUN TWO (2) 4 UTP 24AWG CAT 6 CABLES TO TELECOMMUNICATIONS CLOSET (2 DATA CABLES).
- FOR EACH TELEPHONE RUN ONE (1) 4 UTP 24AWG CAT 6 CABLE TO TELECOMMUNICATIONS CLOSET (1 VOICE CABLE).
- CONTRACTOR TO COORDINATE RECEPTION DESK PANIC BUTTONS WITH VA RESIDENT ENGINEER AND VA POLICE.



FULLY SPRINKLERED

1 TELECOMMUNICATION FIRST FLOOR POWER PLAN
SCALE: 1/4"=1'-0"

BID SUBMISSION 07/18/2013		CONSULTANTS: 		ARCHITECT/ENGINEERS: ELLERBE BECKET 		PROFESSIONAL SEALS: 		Drawing Title TELECOMM FIRST FLOOR PLAN		Project Title JAMES J. PETERS VA MEDICAL CENTER BRONX NEW YORK RENOVATE PRIMARY CARE SUITE B		Project Number 526-13-106 Building Number 100 Drawing Number ET101 Dwg. 34 of 47		Engineering Service 	
Revisions: Date						Dr. John J. Sanderson MD : Patient Care Center Director Abigail Rodriguez RN : Program Management Officer Esther Hicken RN : Clinical Nurse Manager Richard Joso : Safety and Occupational Health Manager		Approved: Director, VAHCHS Approved: Chief of Engineering : Michael Ong		Location BRONX NEW YORK Date 18 JULY 2013		Checked Drawn			