

## NOTES:

1. 3/8" BYPASS IN LOCKED CABINETS- USE A QUARTER TURN STOP. ALL PIPING SHALL BE RIGID AND SECURE.
2. 3/8" BYPASS EXPOSED- USE A LOOSE KEY CHROME STOP. ALL PIPING SHALL BE RIGID AND SECURE.
3. VERIFY SPRING BALL/CONE TYPE CHECK VALVES ARE USED ( NOT SWING TYPE).
4. MIXING VALVES ARE TO BE CHROME PLATED IN ALL APPLICATIONS.

WHY IS LOCKING  
CABINET NEEDED  
ON EXPOSED  
PIPING VALVE IS  
LOOSE KEY WITH  
SCREW CAP

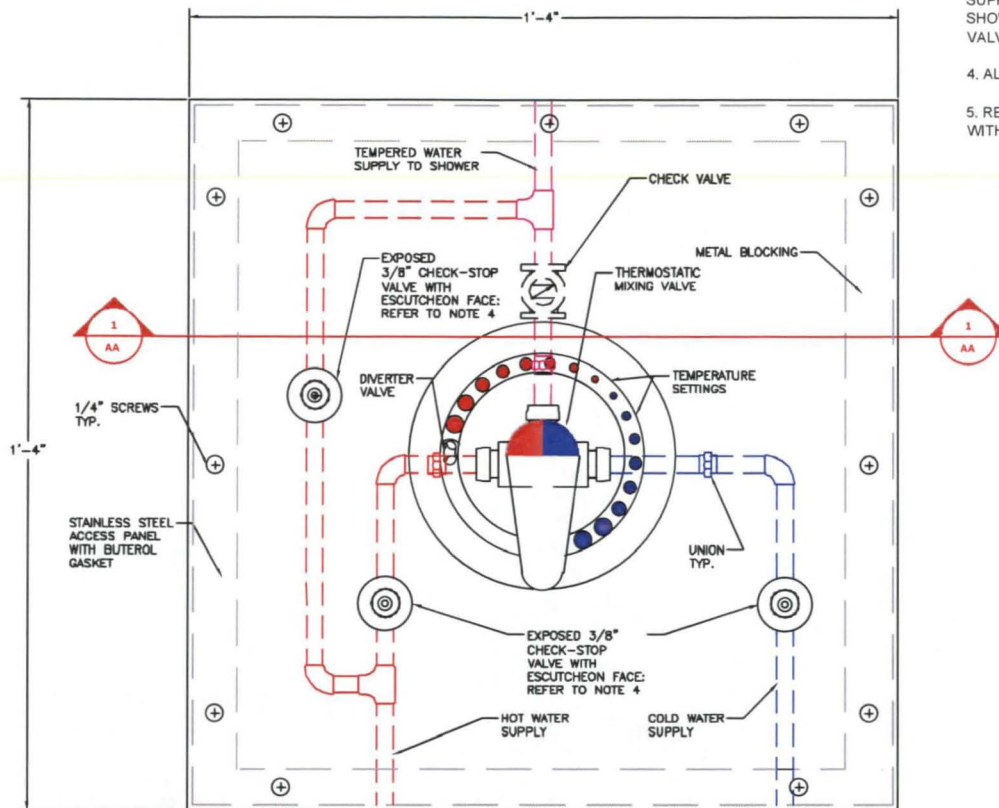
IF COMPRESSION  
IS USED UNIONS WILL NOT  
BE NEEDED

SEE PLUMBING SYSTEMS MANUAL AND SCHEDULE 40 PLUMBING SYSTEMS INSTALLATION WITH EACH VALVE. EACH VALVE REQUIRES A SPECIALIZED APPLICATION.

## SERIES USG-B=M2

3/8" (10mm) compression and Quick-Connect fitting thermostatic mixing valve maintains and limits hot water to desired selectable temperature between 80°F and 120°F (27°C and 49°C) with flow rates as low as 0.5 gpm (3/8" (10mm) compression fitting thermostatic mixing valves maintain and limit hot water to desired selectable temperature between 80 degrees Fahrenheit and 120 degrees Fahrenheit (27 degrees Celsius and 49 degrees Celsius) with flow rates as low as 0.5 gpm (1.9 lpm) and as high as 2.5 gpm (9.5 lpm). The mixing valve is listed to ASSE Standards 1070 for single fixture applications. The USG-B series uses a double throttling design to control both the hot and cold water supply to the mixed outlet. The superior flow characteristics of this valve provide accurate temperature control (±3 degrees Fahrenheit) with low pressure drop. As an added feature, the USG-B-M1 incorporates dual check valves to protect against cross-flow and integral screens to filter out debris. Insulate all plumbing.

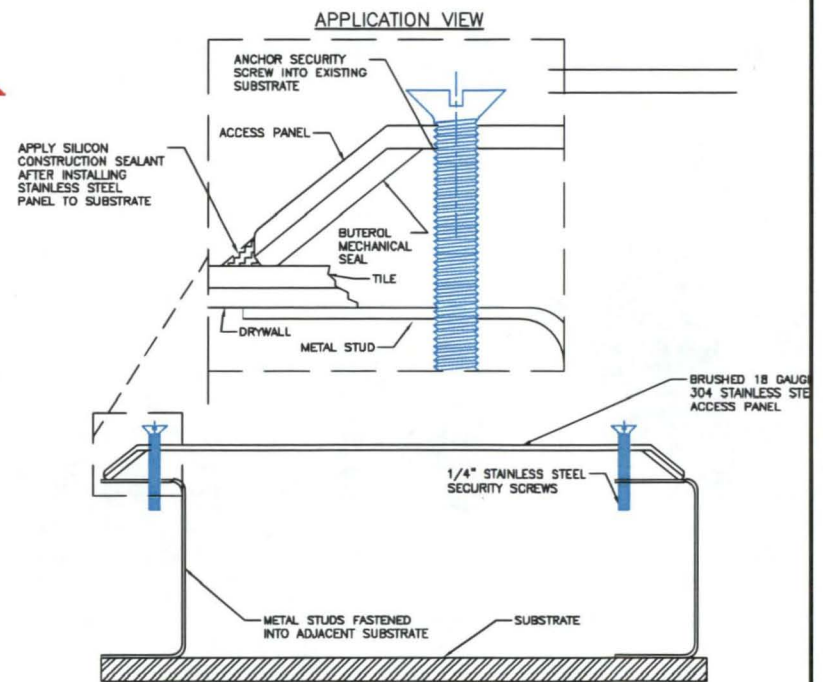
<b>Office of Facilities Management</b> 		Approved: Director, VA Pittsburgh Healthcare System		Sketch Title		Project Title		Date		<b>Veterans Affairs</b>		
		Approved: Chief Operating Officer		3-PORT MIXING VALVE		PLUMBING UPGRADES PROJECT		JAN. 10, 2013				
		Approved: Vice President, Facilities Management		Approved: VISION 4, Safety and Fire Protection Engineer		Building No. #1		Scale NTS			Drawn DM	
		Approved: Manager, Projects Section		Approved: Site Manager		Location		DRAWING NO. SK 4			Dwg. 1 of 1	
Revisions		Date		VA FTTS/HS+444-CR-RE SYSTEM		2/13/2013 10:11 AM 10:13 AM						



DASHED LINES ARE TO SHOW HIDDEN EQUIPMENT BEHIND ACCESS PANEL.

#### NOTES:

1. INSULATE ALL PIPING AND VALVES THAT ARE EXPOSED DURING CONSTRUCTION.
2. FIELD VERIFY THAT ALL PLUMBING WORK IS SECURED AND RIGID TO BLOCKING SUBSTRATE.
3. SKETCH SHOWS SUPPLY LINE AT THE UNDERSIDE OF THE SHOWER CONTROL MIXING VALVE. SUPPLY LINES ALSO ARE LOCATED ABOVE AND TO THE SIDE OF THE MIXING VALVES AT OTHER SHOWERS. CONTRACTOR SHALL FIELD VERIFY SUPPLY LINE LOCATIONS AND LOCATE THE T-STOP VALVE ACCORDINGLY, PRIOR TO BEGINNING CONSTRUCTION AT EACH SHOWER.
4. ALL EXPOSED VALVES ARE TO HAVE SECURITY SCREWS WITH CAPS.
5. REFER TO PLUMBING SYSTEMS MANUAL AND SCHEDULE TO COORDINATE SYSTEMS INSTALLATION WITH EACH LOCATION THAT REQUIRES A SPECIALIZED APPLICATION.



1  
AA

ACCESS PANEL DETAIL TYPICAL  
DETAIL AA: NTS

1. CHANGED PLUMBING LINE-UP

4-3-2013

Office of  
Facilities  
Management

Approved: Director, VA Pittsburgh Healthcare System

Approved: Chief Operating Officer

Approved: Vice President, Facilities Management

Approved: Manager, Projects Section

Drawing Title  
**SHOWER CONTROL AND  
BYPASS DETAIL**

Approved: VISM 4, Safety and Fire Protection Engineer

Approved: Title Manager

Project Title  
**PLUMBING UPGRADES  
PROJECT**

Building No.  
#1

Scale  
NTS

Drawn  
DM

Location  
12. PITTSTOWN DRIVE  
SECTION 4.00 - YORK DIVISION  
PITTSBURGH, PA 15206

Date  
MAR. 27, 2013

Project No.

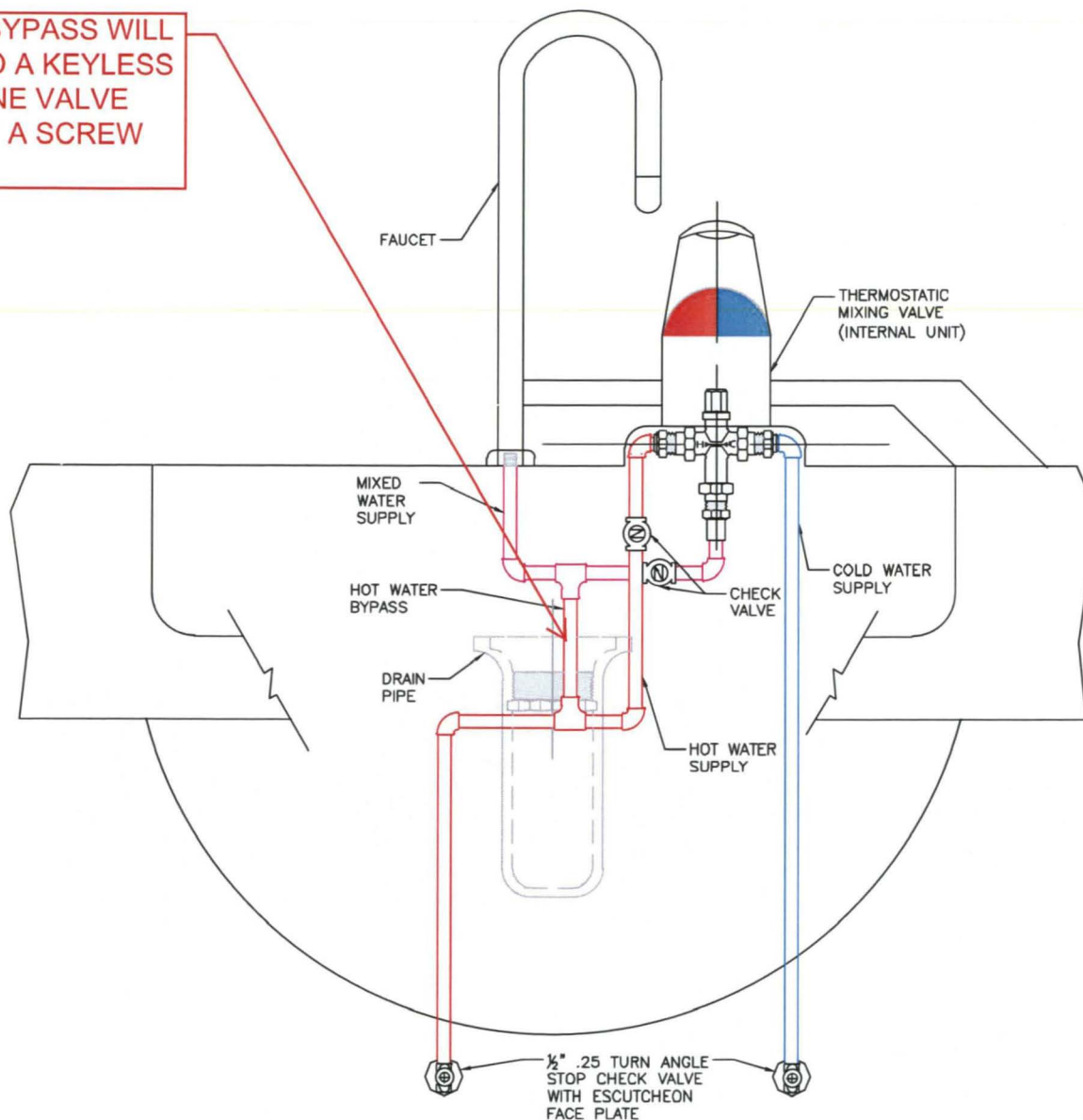
DRAWING NO.

SK 5

Page 1 of 1

Veterans  
Affairs

HW BYPASS WILL  
NEED A KEYLESS  
IN LINE VALVE  
WITH A SCREW  
CAP



## NOTES:

1. INSULATE ALL PIPING AND VALVES THAT ARE EXPOSED DURING CONSTRUCTION.
2. FIELD VERIFY THAT ALL PLUMBING WORK IS SECURE AND RIGID TO BLOCKING SUBSTRATE.
3. REFER TO PLUMBING SYSTEMS MANUAL AND SCHEDULE TO COORDINATE SYSTEMS INSTALLATION WITH EACH LOCATION THAT REQUIRES A SPECIALIZED APPLICATION.

1. CHANGED PLUMBING LINE-UP.

4-1-2013

**Office of  
Facilities  
Management**



Approved: Director, VA Pittsburgh Healthcare System

Approved: Chief Operating Officer

Approved: Vice President, Facilities Management

Approved: Manager, Projects Section

Drawing Title  
**SINK CONTROL AND  
BYPASS DETAIL**

Approved: VISEN 4, Safety and Fire Protection Engineer

Approved: Site Manager

Project Title  
**PLUMBING UPGRADES  
PROJECT**

Building No.  
#1

Scale  
NTS

Drawn  
DM

Location  
VA PITTSBURGH HEALTHCARE SYSTEM  
300 J. W. WALKER DRIVE, SUITE 100  
PITTSBURGH, PA 15261

Date  
MAR. 27, 2013

Project No.

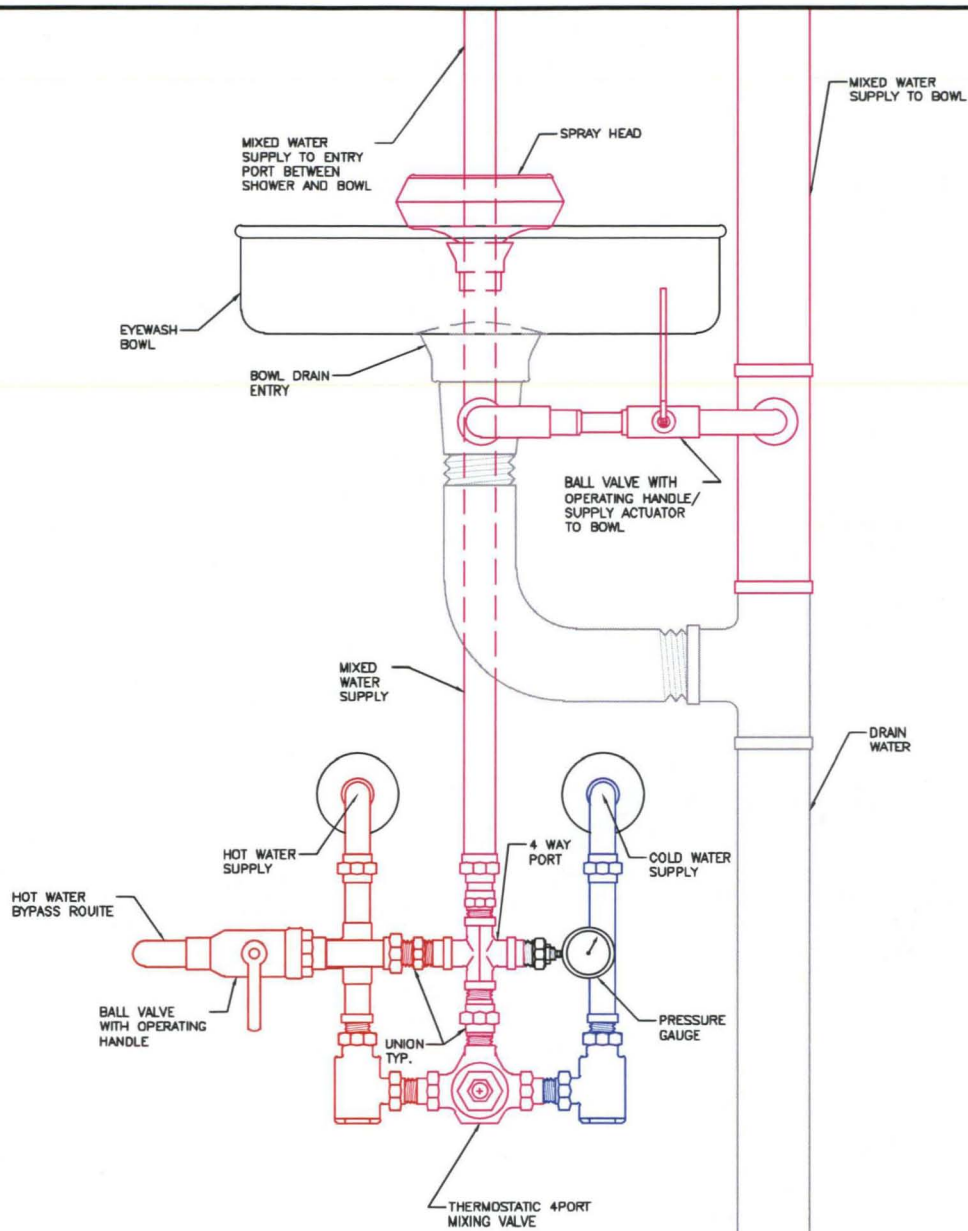
DRAWING NO.

SK 6

Drawn 1 of 1


**Veterans  
Affairs**





NOTES:

1. REFER TO PLUMBING SYSTEMS MANUAL AND SCHEDULE TO COORDINATE SYSTEMS INSTALLATION WITH EACH LOCATION THAT REQUIRES A SPECIALIZED APPLICATION.
2. CONTRACTOR MUST VERIFY ALL FIELD CONDITIONS PRIOR TO WORK START AND AFTER WORK COMPLETION.

		<div style="text-align: center;">  <p><b>Office of Facilities Management</b></p> </div>	Approved: Director, VA Pittsburgh Healthcare System	Drawing Title <b>EYEWASH WITH SHOWER CONTROL BYPASS DETAIL</b>	Project Title <b>PLUMBING UPGRADES PROJECT</b>	Date APR. 1, 2013	<div style="writing-mode: vertical-rl; transform: rotate(180deg);"> <b>Veterans Affairs</b> </div>		
			Approved: Chief Operating Officer					Project No.	
			Approved: Vice President, Facilities Management	Approved: VISM 4, Safety and Fire Protection Engineer	Building No. #1	Scale NTS		Drawn DM	DRAWING NO. <b>SK 7</b>
Revisions	Date		Approved: Manager, Projects Section	Approved: Site Manager	Location VA PITTSBURGH HEALTHCARE SYSTEM XX UNIVERSITY DRIVE PITTSBURGH, PA 15261			Dwg. 1 of 1	