

A

B

C

D

E

F

A

B

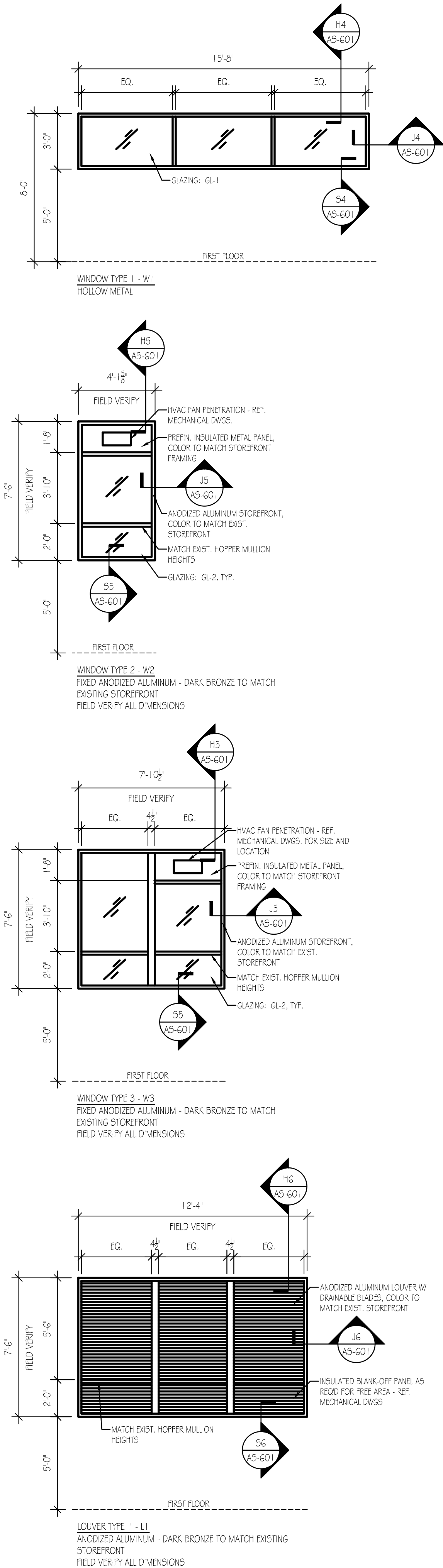
C

D

E

F

three inches = one foot  
one and one half inches = one foot  
one inch = one foot  
three quarters inch = one foot  
one half inch = one foot  
three eighths inch = one foot  
one eighth inch = one foot  
one quarter inch = one foot



RM. NO.	ROOM NAME	FLOOR	BASE	WALLS				CEILING	HEIGHT	REMARKS
				NORTH	SOUTH	EAST	WEST			
167	VETERAN EDUCATION RESOURCES (VERC)	SV	VB	GWB	GWB	GWB	GWB	AT	8'-0"	
168	VBA CLIC 2 BENEFITS OFFICE (CTB)	CT	VB	GWB	GWB	GWB	GWB	AT	8'-2"	
169A	LOCKER	SV	VB	GWB	GWB	GWB	GWB	AT	8'-2"	
101A	FIRE ALARM (FA)	SV	VB	GWB	GWB	GWB	GWB	AT	8'-2"	
105	MULTI-PURPOSE	CT	VB	GWB	GWB	GWB	GWB	AT	8'-2"	
136	PATIENT REGISTRATION	CT	VB	GWB	GWB	GWB	GWB	AT	8'-2"	
138A	ELIGIBILITY	CT	VB	GWB	GWB	GWB	GWB	AT	8'-2"	
138B	MEANS TESTING	CT	VB	GWB	GWB	GWB	GWB	AT	8'-2"	
139	STAFF LOUNGE	SV	VB	GWB	GWB	GWB	GWB	AT	8'-2"	
140	SMALL CONFERENCE	CT	VB	GWB	GWB	GWB	GWB	AT	8'-2"	
141	OFFICE - DETITMAN	CT	VB	GWB	GWB	GWB	GWB	AT	8'-2"	
142	OFFICE	CT	VB	GWB	GWB	GWB	GWB	AT	8'-2"	
143	PUBLIC TOILET	PT	PT	GWB	GWB	GWB	GWB	AT	7'-6"	
144	HOUSEKEEPING AIDS CLOSET (HAG)	SV	VB	GWB	GWB	GWB	GWB	AT	7'-6"	
145	OFFICE	CT	VB	GWB	GWB	GWB	GWB	AT	7'-6"	
146	RN CARE COORDINATION	SV	VB	GWB	GWB	GWB	GWB	AT	7'-6"	
148	TELEHEALTH	SV	VB	GWB	GWB	GWB	GWB	AT	8'-2"	
147	MECHANICAL	EXP	EXP	GWB	GWB	GWB	GWB	EXP		
148A	EXAM G-2	SV	VB	GWB	GWB	GWB	GWB	AT	8'-2"	
148B	EXAM G-1	SV	VB	GWB	GWB	GWB	GWB	AT	8'-2"	
149	STAFF TOILET	PT	PT	GWB	GWB	GWB	GWB	AT	8'-2"	
150	PACT TEAMLET CLERK 6	CT	VB	GWB	GWB	GWB	GWB	AT	8'-2"	
151	SOILED	SV	VB	GWB	GWB	GWB	GWB	AT	8'-2"	
152	OFFICE - SOCIAL SERVICES	CT	VB	GWB	GWB	GWB	GWB	AT	8'-2"	
153	PACT TEAMLET CLERK 5	CT	VB	GWB	GWB	GWB	GWB	AT	8'-2"	
154	EXAM 5-1	SV	VB	GWB	GWB	GWB	GWB	AT	8'-2"	
154A	EXAM 5-2	SV	VB	GWB	GWB	GWB	GWB	AT	8'-2"	
155	RN CARE COORDINATOR 5	SV	VB	GWB	GWB	GWB	GWB	AT	8'-2"	
156	OFFICE PHARMACIST	CT	VB	GWB	GWB	GWB	GWB	AT	8'-2"	
157	RN CARE COORDINATOR 4	SV	VB	GWB	GWB	GWB	GWB	AT	8'-2"	
158	EXAM 4-2	SV	VB	GWB	GWB	GWB	GWB	AT	8'-2"	
158A	EXAM 4-1	SV	VB	GWB	GWB	GWB	GWB	AT	8'-2"	
159	PACT TEAMLET CLERK 4	CT	VB	GWB	GWB	GWB	GWB	AT	8'-2"	
160	PACT TEAMLET CLERK 3	CT	VB	GWB	GWB	GWB	GWB	AT	8'-2"	
160A	PRINTER ALCOVE	SV	VB	GWB	GWB	GWB	GWB	AT	8'-2"	
161	RN CARE COORDINATOR 3	SV	VB	GWB	GWB	GWB	GWB	AT	8'-2"	
162	EXAM 3-1	SV	VB	GWB	GWB	GWB	GWB	AT	8'-2"	
162A	EXAM 3-2	SV	VB	GWB	GWB	GWB	GWB	AT	8'-2"	
163	OFFICE - PACT BEHAVIORAL PSYCHOLOGIST	CT	VB	GWB	GWB	GWB	GWB	AT	8'-2"	
164	OFFICE PHARMACIST	CT	EXP	GWB	GWB	GWB	GWB	AT	8'-2"	
165	CLEAN UTILITY	SV	VB	GWB	GWB	GWB	GWB	AT	8'-2"	
166	OFFICE - PACT BEHAVIORAL PSYCHOLOGIST	CT	VB	GWB	GWB	GWB	GWB	AT	8'-2"	
167	PROCEDURE	SV	VB	GWB	GWB	GWB	GWB	AT	8'-2"	
168	RN CARE COORDINATOR 2	SV	VB	GWB	GWB	GWB	GWB	AT	8'-2"	
169	EXAM 2-2	SV	VB	GWB	GWB	GWB	GWB	AT	8'-2"	
169A	EXAM 2-1	SV	VB	GWB	GWB	GWB	GWB	AT	8'-2"	
170	PACT TEAMLET CLERK 2	CT	VB	GWB	GWB	GWB	GWB	AT	8'-2"	
171	RN CARE COORDINATOR 2	SV	VB	GWB	GWB	GWB	GWB	AT	8'-2"	
172	EXAM 1-2	SV	VB	GWB	GWB	GWB	GWB	AT	8'-2"	
172A	EXAM 1-1	SV	VB	GWB	GWB	GWB	GWB	AT	8'-2"	
173	PACT TEAMLET CLERK 1	CT	VB	GWB	GWB	GWB	GWB	AT	8'-2"	
174	PHOS	SV	VB	GWB	GWB	GWB	GWB	AT	8'-2"	
175	GENERAL WAITING	SV	VB	GWB	GWB	GWB	GWB	AT	8'-2"	
147	CORRIDOR	SV	VB	GWB	GWB	GWB	GWB	AT	8'-2"	
154	CORRIDOR	SV	VB	GWB	GWB	GWB	GWB	AT	8'-2"	
173	CORRIDOR	SV	VB	GWB	GWB	GWB	GWB	AT	8'-2"	
REMARKS:										
GENERAL NOTES: ALL NEW INTERIOR FINISHES, INCLUDING FLOOR, WALL AND CEILING MATERIALS, SHALL BE IN ACCORDANCE WITH FLAME SPREAD AND SMOKE DEVELOPMENT REQUIREMENTS OF THE 2009 EDITION OF NFPA 101 - LIFE SAFETY CODE.										

FLOORS		WALLS		CEILING	
CT	CARPET TILE	GWB	GYPSPUM WALL BOARD, PAINTED	AT	ACOUSTICAL CEILING TILE
PT	PORCELAIN TILE			GWB	GYPSPUM WALL BOARD, PAINTED
SV	SHEET VINYL			EXP	EXPOSED
EXP	EXPOSED				
BASE					
VB	4" HIGH VINYL COVE BASE				

#### WINDOW ELEVATIONS

SCALE: 1/4" = 1'-0"

#### ARCHITECT/ENGINEERS:

2780 SHADELAND STATION  
INDIANAPOLIS, IN 46256-9957  
TEL 317.547.5580 FAX 317.543.0270  
www.structurepoint.com

Engineering Corporation  
The Fairmont Building  
92445 Calumet Ave., Suite 205,  
Munster, IN 46321  
(219) 836-2120 Fax (219) 836-1129

Approved: Medical Center Director

NAME: \_\_\_\_\_

SIGNATURE: \_\_\_\_\_

Approved: Medical Center Associate Director

NAME: \_\_\_\_\_

SIGNATURE: \_\_\_\_\_

Drawing Title

DOOR, GLAZING AND ROOM FINISH SCHEDULES

Approved: Engineering Service

NAME: \_\_\_\_\_ SIGNATURE: \_\_\_\_\_

Approved: Project Director

NAME: \_\_\_\_\_ SIGNATURE: \_\_\_\_\_

Project Title  
Renovate First Floor East Wing  
for PACT

Location  
2121 Lake Ave., Fort Wayne, IN 46805

Date  
03/27/2013

Checked  
DLW

Drawn  
TKP

Project Number  
610A4-12-107

Building Number  
01

Drawing Number  
AS-601

Dwg. 16 of 58

Office of  
Construction  
and Facilities  
Management

Department of  
Veterans Affairs

BIDDING DOCUMENTS  
FULLY SPRINKLERED