

three inches = one foot
one and one half inches = one foot
one inch = one foot
one half inch = one foot
three quarters inch = one foot
one half inch = one foot
three eighths inch = one foot
one quarter inch = one foot
one eighth inch = one foot

OCCUPANCY SENSOR SCHEDULES				
ITEM	ITEM DESCRIPTION	MANUFACTURER	NOTES	REMARKS
PC-1	OCCUPANCY SENSOR CEILING MOUNTED PHOTOCELL SENSOR	LEVITON OSC04-10W, CELING MOUNTED, HIGH DENSITY, ULTRA SONIC, PIR, 450 SQ FT OR APPROVED EQUAL.	CONTRACTOR TO FOLLOW RECOMMENDED WIRING AND INSTALLATION INSTRUCTIONS PER MANUFACTURER	QUANTITY AND LOCATION PER THE DESIGN DRAWINGS
PC-2	OCCUPANCY SENSOR WALL SWITCH	LEVITON OSSMT WALL SWITCH MULTI-TECHNOLOGY DECORA-STYLE , ULTRA-SONIC OR APPROVED EQUAL.	CONTRACTOR TO FOLLOW RECOMMENDED WIRING AND INSTALLATION INSTRUCTIONS PER MANUFACTURER	QUANTITY AND LOCATION PER THE DESIGN DRAWINGS
PC-2	OCCUPANCY SENSOR POWER PACK	LEVITON OSP20-0D0, POWER PACK FOR 120/230/277 VAC SYSTEM OR APPROVED EQUAL.	CONTRACTOR TO FOLLOW RECOMMENDED WIRING AND INSTALLATION INSTRUCTIONS PER MANUFACTURER	QUANTITY AND LOCATION PER THE DESIGN DRAWINGS

LIGHTING SCHEDULE AND SPECIFICATIONS 26 51 00			
ITEM	ITEM DESCRIPTION	MANUFACTURER	NOTES
L-1	2' x 4' recessed LED lighting fixture - normal	RECESSED LED TROFFER LIGHT FIXTURE, 44W 4000 LUMENS=90LPW, 3500 Kelvin, 120-277 volt(standard), S-step dimming to 50% ,, CREE - CR24-40L-35K-S OR APPROVED EQUAL.	
L-2	2' x 4' recessed LED lighting fixture - EMERGENCY	SAME AS L-1 BUT ON EMERGENCY, CREE - CR24-40L-35K-S OR APPROVED EQUAL.	
L-3	2' x 2' recessed LED lighting fixture - Normal	RECESSED LED TROFFER LIGHT FIXTURE, 35W 3200 LUMENS=90LPW, 4000 Kelvin, 120-277 volt(standard), step dimming to 50% ,, CREE - CR22-32L-40K-S OR APPROVED EQUAL.	
L-4	wall mounted task light - LED	WALL MOUNT, SAU=SATIN ALUMINUM, 35=3500 K, 120V, 20 W, LOL CDL35SAU OR APPROVED EQUAL.	CONTRACTOR TO SPECIFY NUMBER OF FACE PANEL, COLOR TO MATCH EXISTING BUILDING WIDE HOSPITAL. CONTRACTOR TO SPECIFY FACEPLATES PER THE DRAWING.
L-5	EXIT LIGHT - LED	EXIT LIGHT LED-AC: EMERGENCY AC OPERATION ONLY, FACE STENCIL, FACING (SEE REMARKS) - R= RED LETTER COLORS- W HOUSING FINISH-VOLTAGE:120VAC - LOL LT-A--', R, W, FA OR APPROVED EQUAL.	SUPPLY WITH FIXTURE HOOKS-AND SUSPEND FROM BEAMS 3 FT DOWN TO THE FLOOR WITH CHAIN HOOK AND CHAIN SET
L-6	1' x 4' general duty lighting high bay fixture -LED	4 FT LONG LED, 120 VOLTS, 44W 4000 LUMENS=90 LPW, 4000 KELVIN, STEP DIMMING TO 50% , EMERGENCY BACKUP TO 1400 LUMEN - CR-LE-40L-40K-S-EB14 CREE OR APPROVED EQUAL	
L-7	DOWNLIGHT RECESSED CAN LIGHTS - LED	RECESSED CAN LIGHTS LED LR6 6" ROUND RECESSED LED DOWNLIGHT WITH INTEGRAL DRIVER, LEDC60-650 (12W, 650 LUMEN, CREE LR6 LED MODULE)-GU24 LAMP BASE, 3500 K LAMP COLOR TEMPERATURE- RWT (RIBBED WHITE TRIM) - VOLTAGE 120V, CREE LR6C-GU24 OR APPROVED EQUAL.	
L-8	WALL MOUNTED CORRIDOR - LED	WALL MOUNT, WHU=WHITE, SAU=SATIN ALUMINUM, 35=3500 K, 120V, 20 W, PHILIP LIGHTOLIER LOL -CDL35WH OR APPROVED EQUAL.	SPECIFY ACCESSORIES PER ARCHITECTURAL AND VA INTERIOR DESIGN.

LIGHTING LEGEND	
	EXISTING LIGHT FIXTURE
	NEW LIGHT FIXTURE IN NEW GRID SYSTEM
	JUNCTION BOX IN CEILING - NUMBER SIGNIFIES CIRCUIT NUMBER STRING OF LIGHTS ARE ON
	HOMERUN JUNCTION BOX TO DESIGNATED PANEL

OCCUPANCY SENSOR NOTES (PC-#):

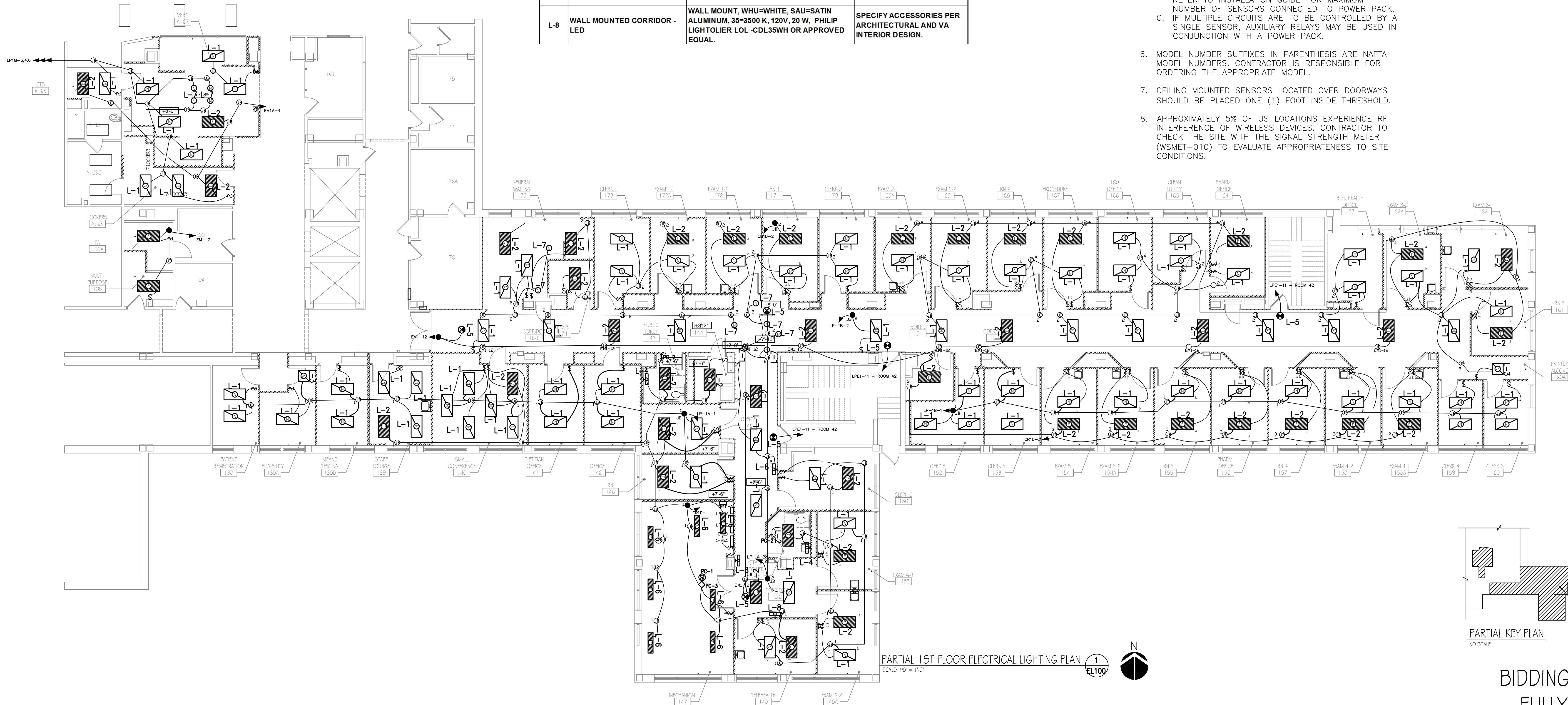
- ALL SENSOR LOCATIONS ARE APPROXIMATE. REFER TO MANUFACTURER'S INSTALLATION INSTRUCTIONS PRIOR TO INSTALLATION.
- ULTRASONIC CEILING MOUNT SENSORS SHOULD BE LOCATED A MINIMUM OF SIX (6) FEET FROM HVAC SUPPLY/RETURN VENTS. SEE MECHANICAL HVAC DRAWINGS.
- TROUGH MOUNTED, PENDANT MOUNTED AND PENDANT MOUNTED INDIRECT LIGHTING SOURCES AFFECT THE OPERATION OF LOCALLY MOUNTED SENSORS. CONTRACTOR IS RESPONSIBLE FOR ADJUSTING SENSOR LOCATIONS TO ALLOW FOR PROPER OPERATION.
- CONTRACTOR IS RESPONSIBLE FOR PROPER SENSITIVITY AND TIME DELAY SETTINGS FOR NON-ADAPTIVE PRODUCTS, FOLLOWING THE MANUFACTURER'S RECOMMENDED PLACEMENT, AND FIELD VERIFICATION OF CIRCUITS WITH RESPECT TO POWER PACK PLACEMENT.
- CONTRACTOR IS RESPONSIBLE FOR FIELD VERIFICATION OF REQUIRED NUMBER OF POWER PACKS:
 - ONE POWER PACK IS REQUIRED FOR EACH CONTROLLED CIRCUIT.
 - EACH POWER PACK CAN SUPPLY UP TO 150MA. REFER TO INSTALLATION GUIDE FOR MAXIMUM NUMBER OF SENSORS CONNECTED TO POWER PACK.
 - IF MULTIPLE CIRCUITS ARE TO BE CONTROLLED BY A SINGLE SENSOR, AUXILIARY RELAYS MAY BE USED IN CONJUNCTION WITH A POWER PACK.
- MODEL NUMBER SUFFIXES IN PARENTHESIS ARE NAFTA MODEL NUMBERS. CONTRACTOR IS RESPONSIBLE FOR ORDERING THE APPROPRIATE MODEL.
- CEILING MOUNTED SENSORS LOCATED OVER DOORWAYS SHOULD BE PLACED ONE (1) FOOT INSIDE THRESHOLD.
- APPROXIMATELY 5% OF US LOCATIONS EXPERIENCE RF INTERFERENCE OF WIRELESS DEVICES. CONTRACTOR TO CHECK THE SITE WITH THE SIGNAL STRENGTH METER (WSMET-010) TO EVALUATE APPROPRIATENESS TO SITE CONDITIONS.

GENERAL NOTES

- SEE SHEET EL-600 FOR LIGHTING SCHEDULE.
- SEE SHEET G-004 FOR SYMBOLS, ABBREVIATIONS AND NOTES
- ALL FINAL QUANTITIES, LOCATIONS AND ARRANGEMENTS OF INTERIOR LIGHTING FIXTURES SHALL BE OBTAINED FROM THE ARCHITECTURAL REFLECTED CEILING PLAN DRAWING AS-121.
- ALL FINAL GENERAL LIGHTING AS WELL AS ACCENT LIGHTING FIXTURE TYPES AND COLORS SHALL BE COORDINATED WITH THE ARCHITECT AND THE VA INTERIOR DESIGNER.
- SWITCHES FOR EXAM ROOMS INDICATED WITH a,b SHALL SWITCH RESPECTIVE LIGHT FIXTURES INDICATED WITH a OR b
- JUNCTION BOXES SHALL BE LABELED WITH PANEL NAME AND CIRCUIT ON INSIDE OF BOX
- JUNCTION BOX COVERS SHALL BE LABELED WITH PANEL NAME AND CIRCUIT NUMBER

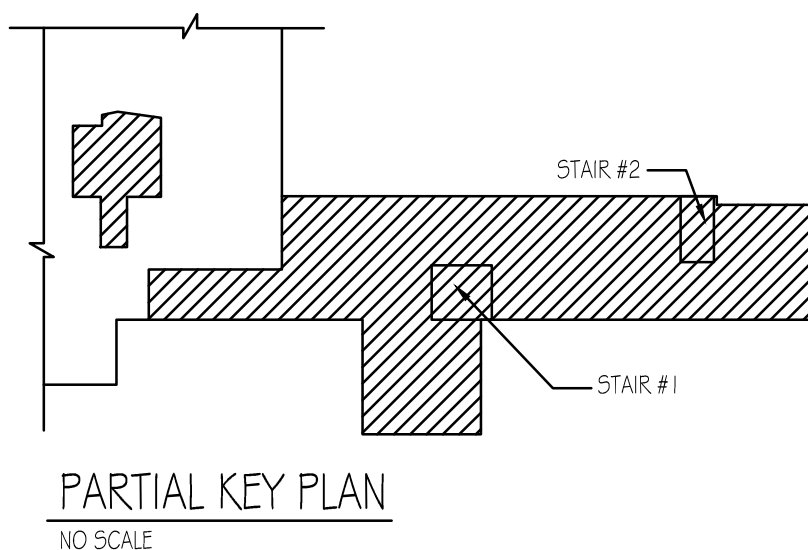
DETAIL REFERENCE

- 3
EP-500
TYPICAL L-5 INSTALLATION
- 4
EP500
TYPICAL L-1, L-2 INSTALLATION
- 5
EP500
TYPICAL L-7 INSTALLATION



PARTIAL 1ST FLOOR ELECTRICAL LIGHTING PLAN
SCALE: 1/8" = 1'-0"

1
EL100



PARTIAL KEY PLAN
NO SCALE

BIDDING DOCUMENTS
FULLY SPRINKLERED

BIDDING DOCUMENTS	05/27/2013
Revisions:	Date:



VA Northern Indiana
Health Care System,
Fort Wayne
2121 Lake Ave., Fort Wayne
IN 46805

CONSULTANTS:

USFin Development, LLC
1105 West Weir Street
Litchfield, Illinois 62556
Viridian Architectural Design, Inc.
2020 East Washington Blvd, Suite 200
Fort Wayne, Indiana 46803

ARCHITECT/ENGINEERS:

AMERICAN
STRUCTUREPOINT
INC.
7280 SHADELAND STATION
INDIANAPOLIS, IN 46256-3957
TEL 317.547.5580 FAX 317.543.0270
www.structurepoint.com

enerTronics
ENERGY TO EXCEL
Engineering Corporation
The Fairmont Building
9245 Calumet Ave., Suite 205,
Munster, IN 46321
(219) 836-2120 Fax (219) 836-1129

Approved: Medical Center Director
NAME: _____
SIGNATURE: _____
Approved: Medical Center Associate Director
NAME: _____
SIGNATURE: _____

Drawing Title
ELECTRICAL FLOOR LIGHTING PLAN
Approved: Engineering Service
NAME: _____ SIGNATURE: _____
Approved: Project Director
NAME: _____ SIGNATURE: _____

Project Title
Renovate First Floor East Wing
for PACT

Location
2121 Lake Ave., Fort Wayne, IN 46805

Date
03/27/2013

Checked
J5

Drawn
D5

Project Number
610A4-12-107
Building Number
01
Drawing Number
EL-100
Dwg. 52 of 58

Office of
Construction
and Facilities
Management

