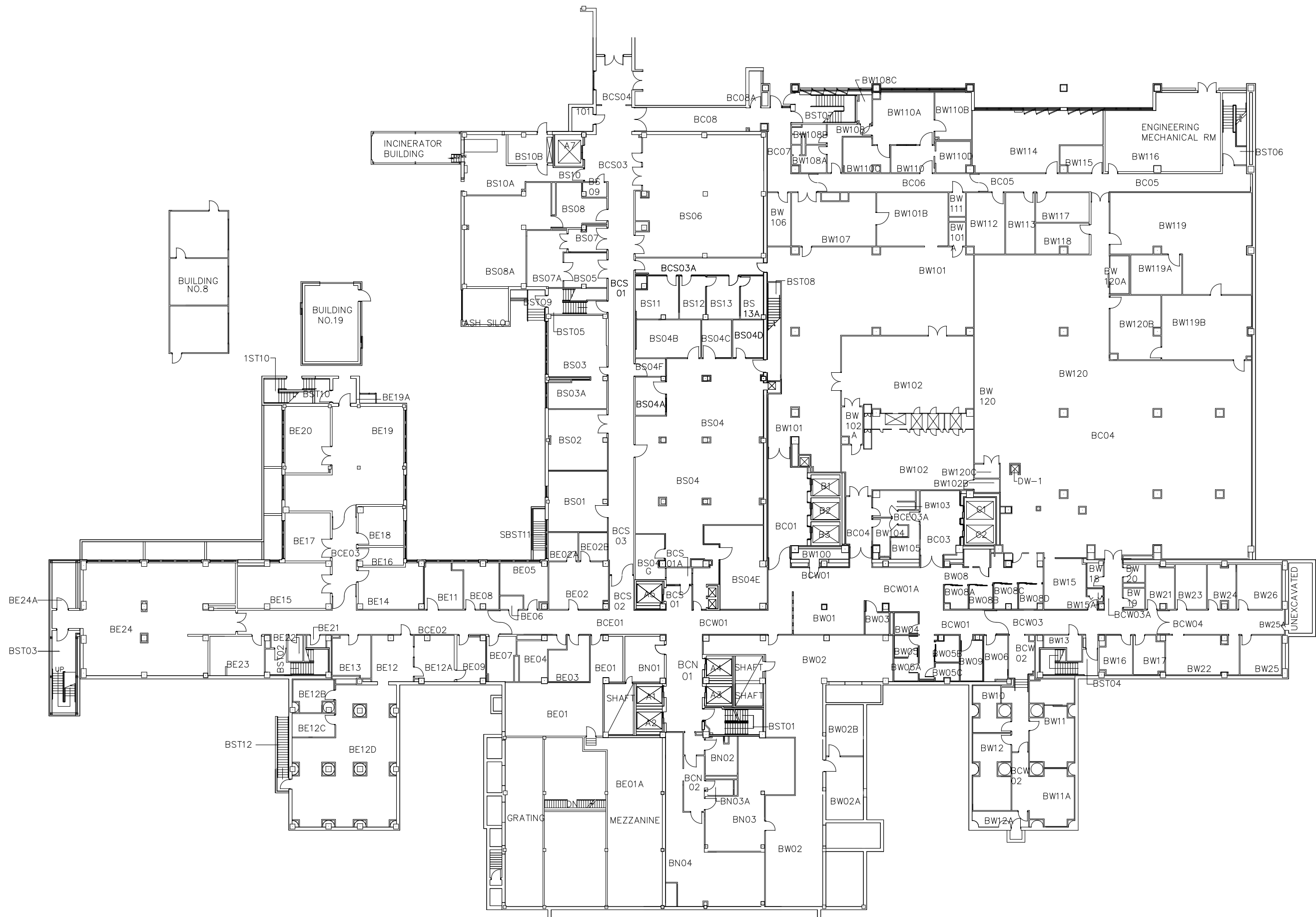


Quad Cities VA Clinic

5/27/10 RW

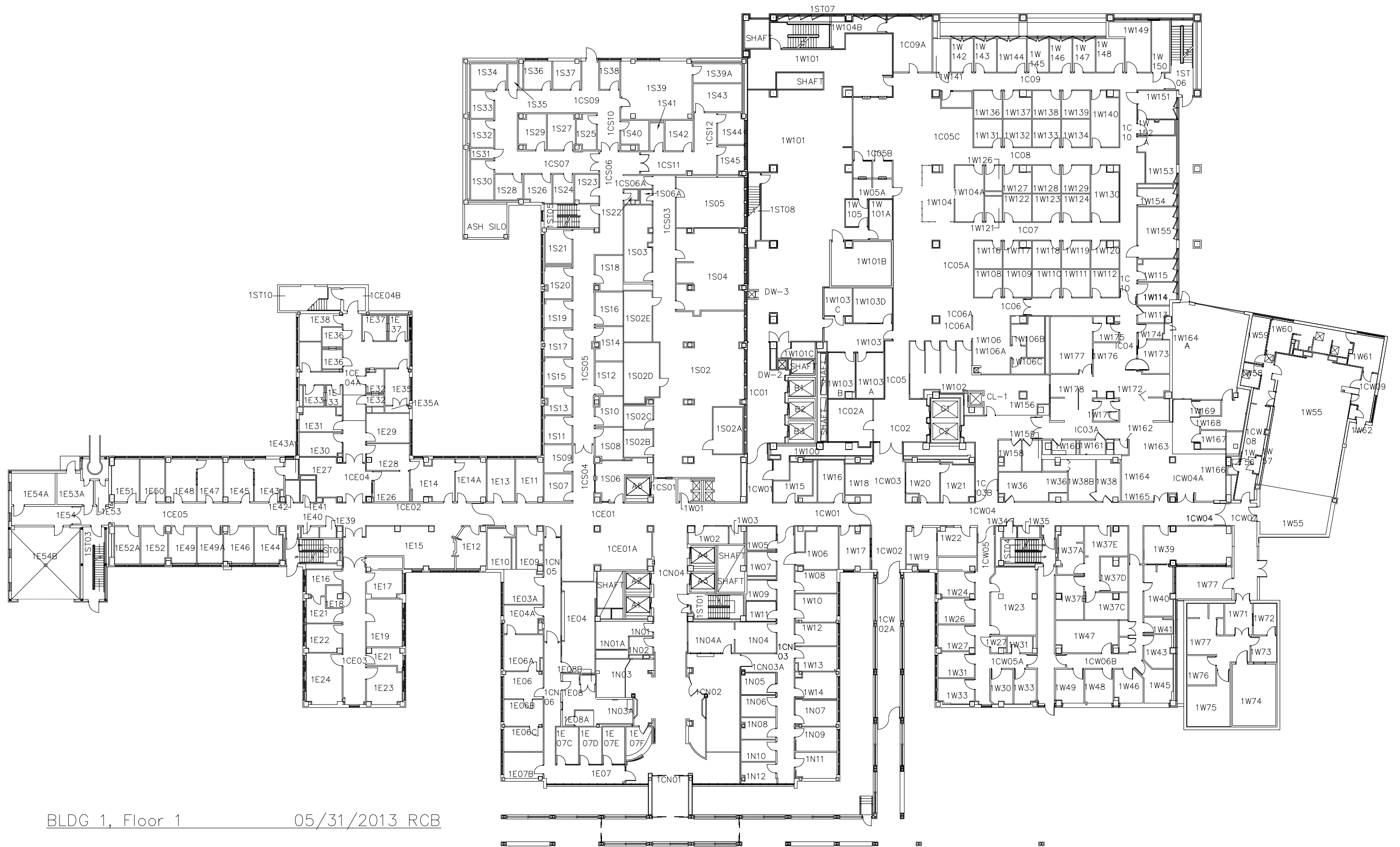




BLDG 1, Basement

04/02/2013 RS

Scale 1/32"=1'

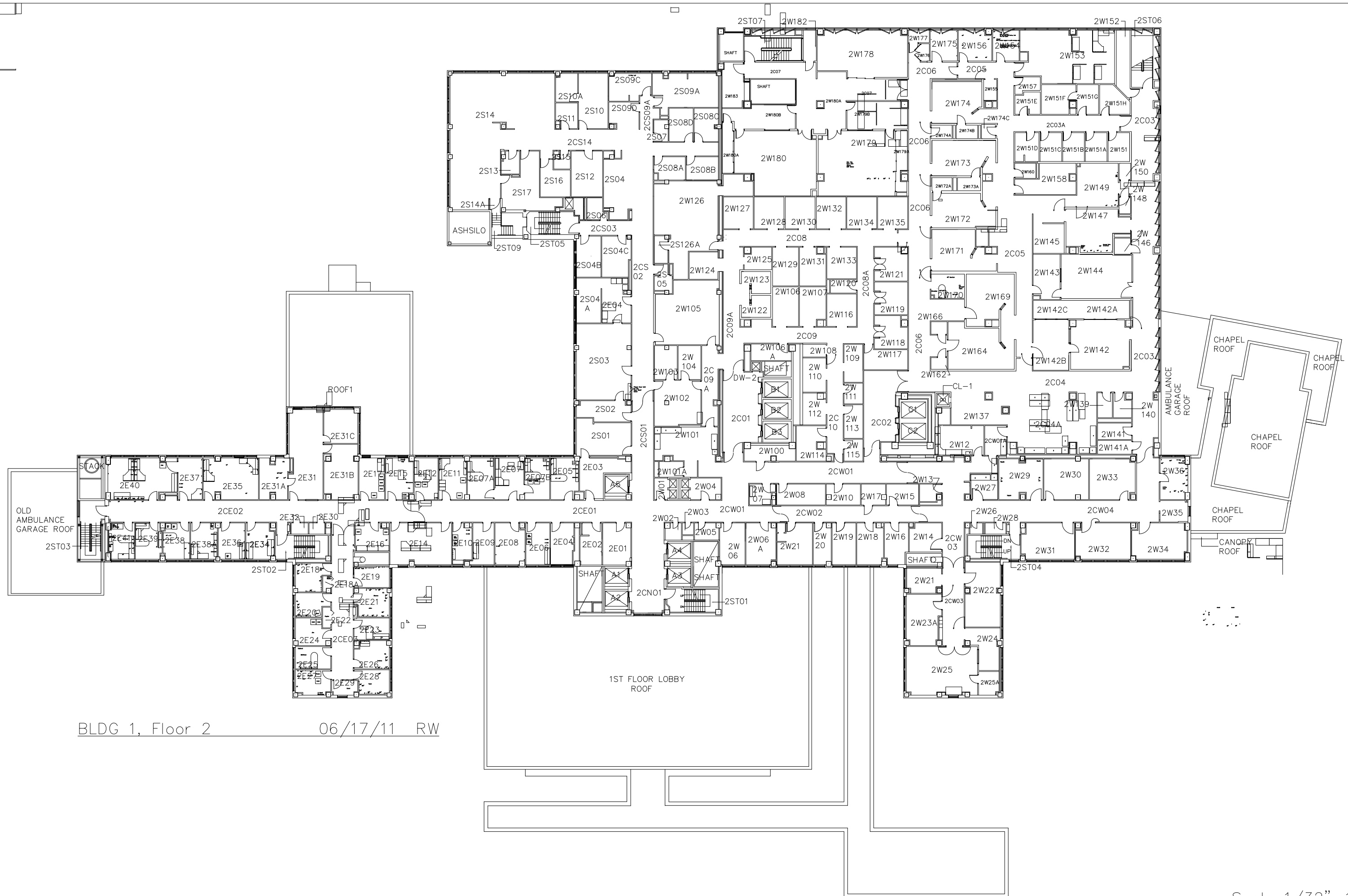


BLDG 1, Floor 1

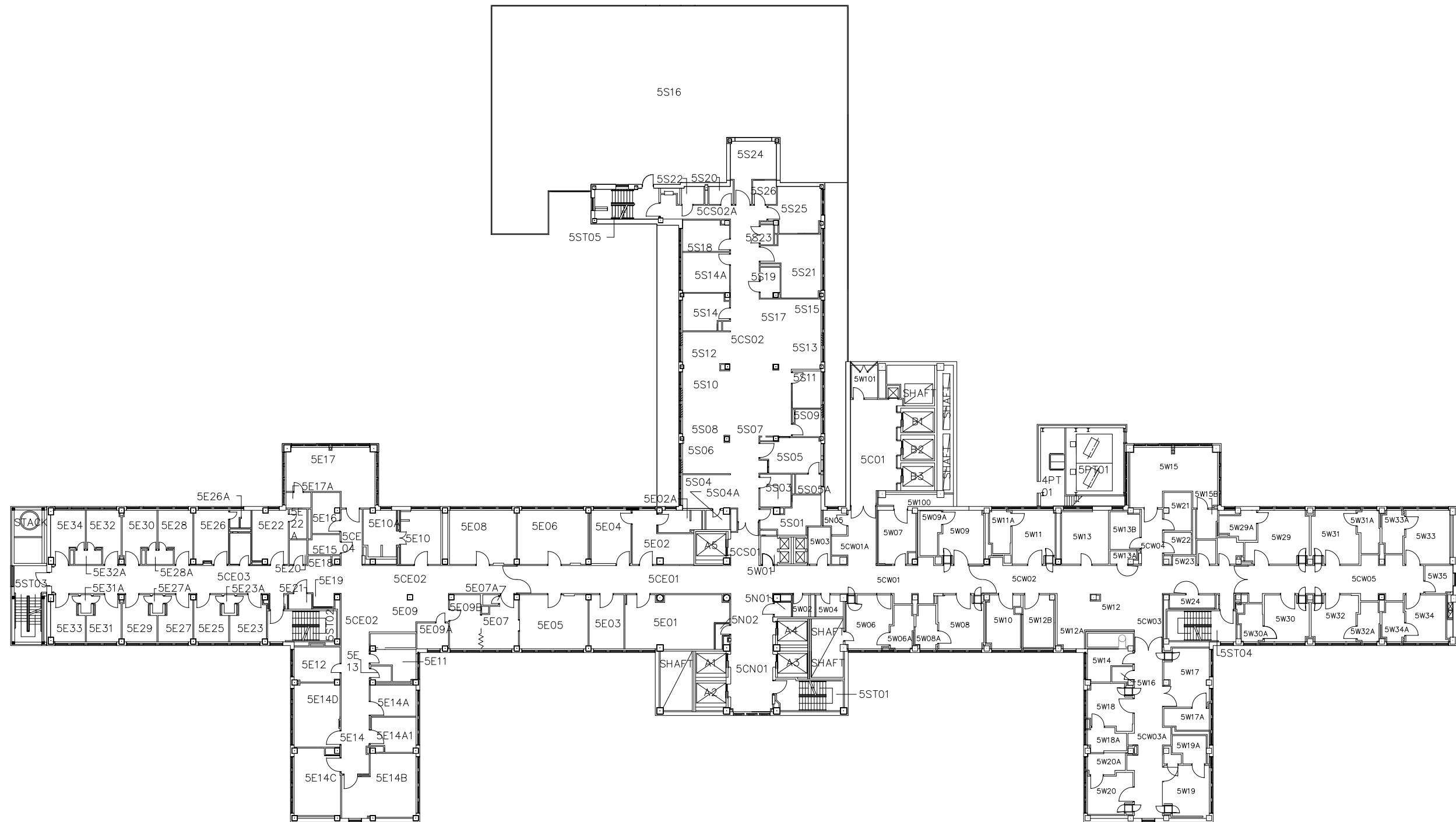
05/31/2013 RCB

Scale 1/32"=1'

EXAM
EXAM
CLERK
WAITING



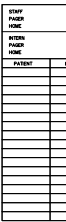
Scale 1/32"=1'



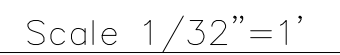
BLDG 1, FLOOR 5

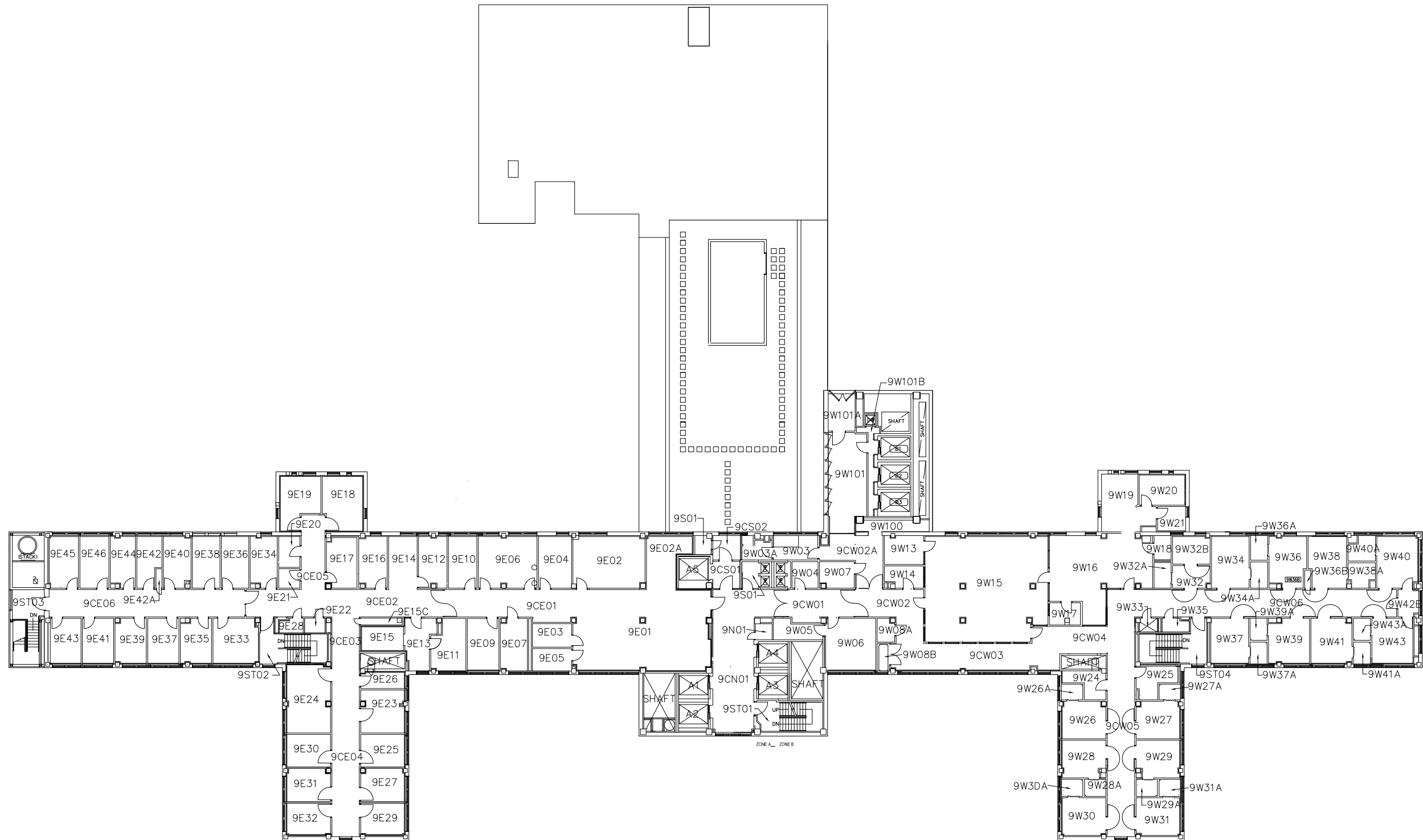
05/13/2013 RCB

Scale 1/32"=1'



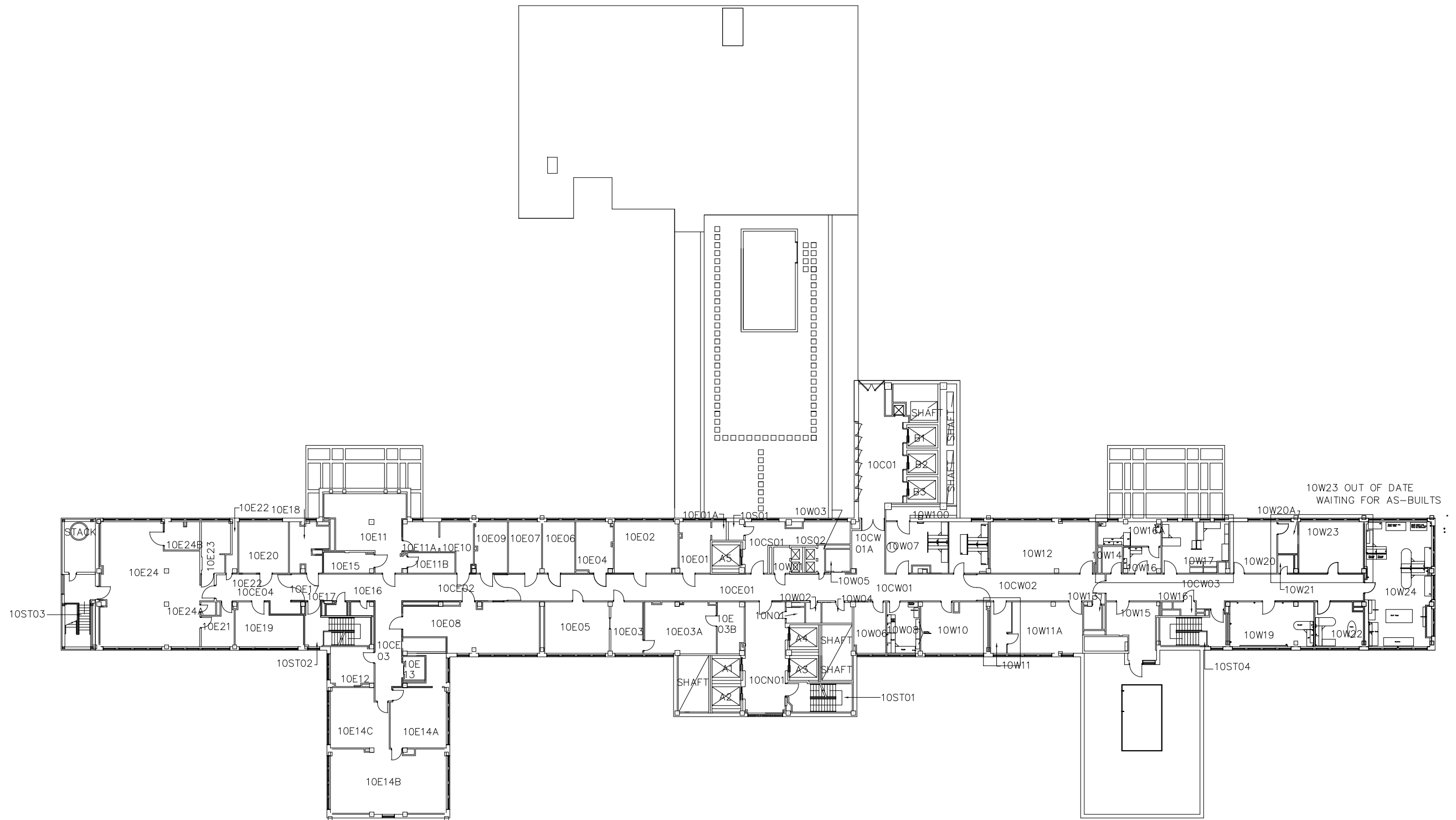
BLANK
WHITEBOARD





BLDG 1, FLOOR 9

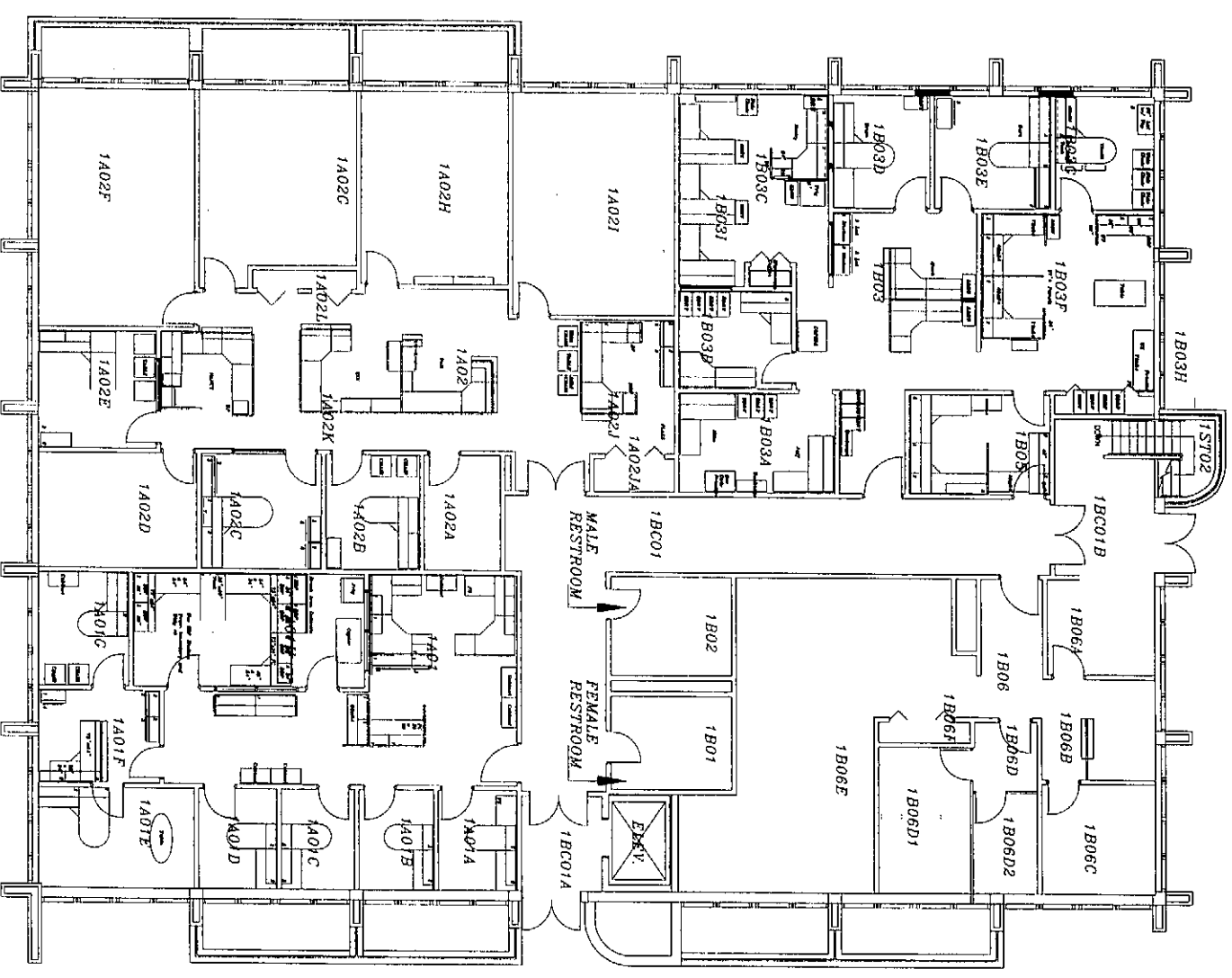
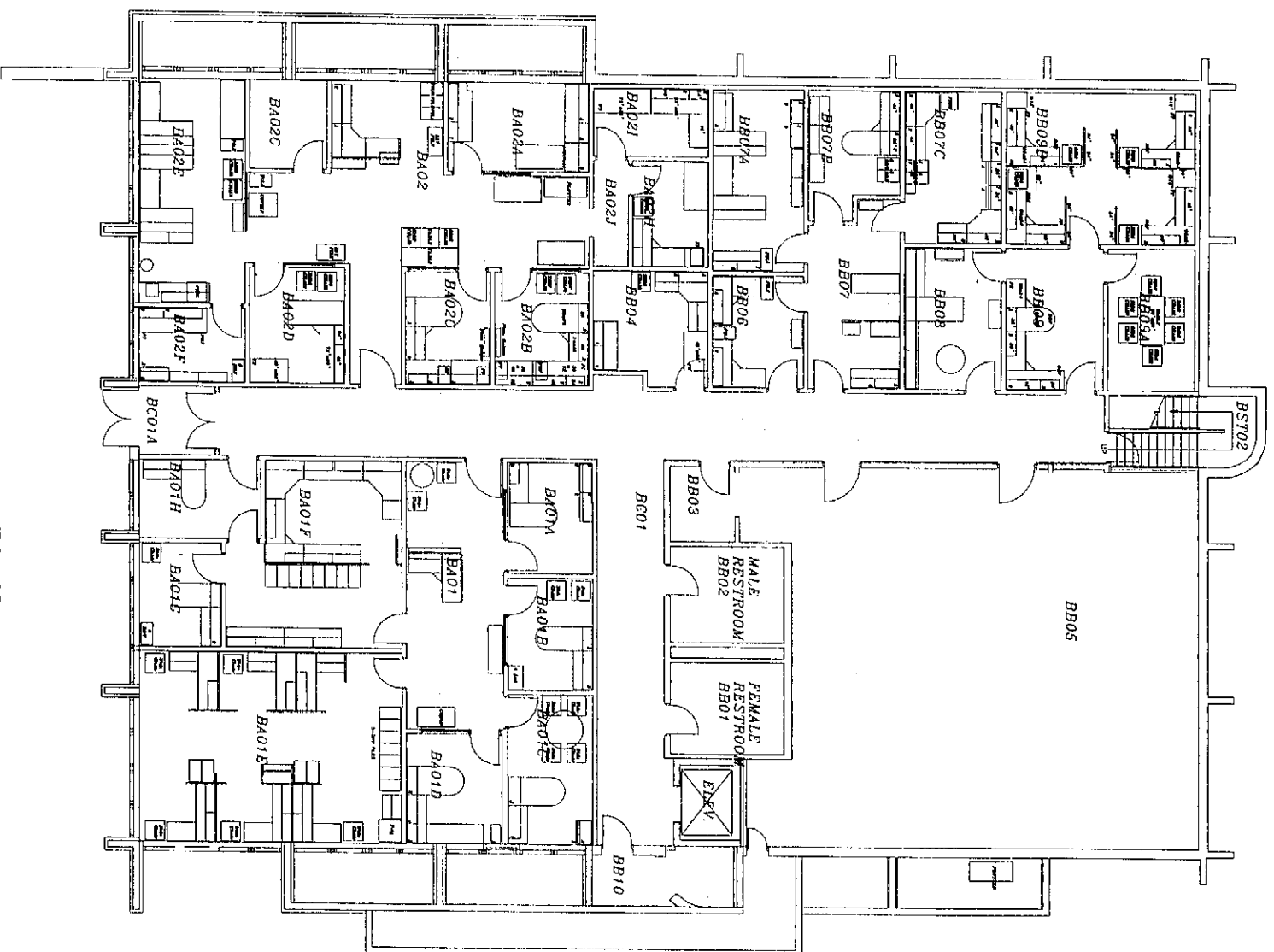
06/13/11 RW



BLDG 1, FLOOR 10

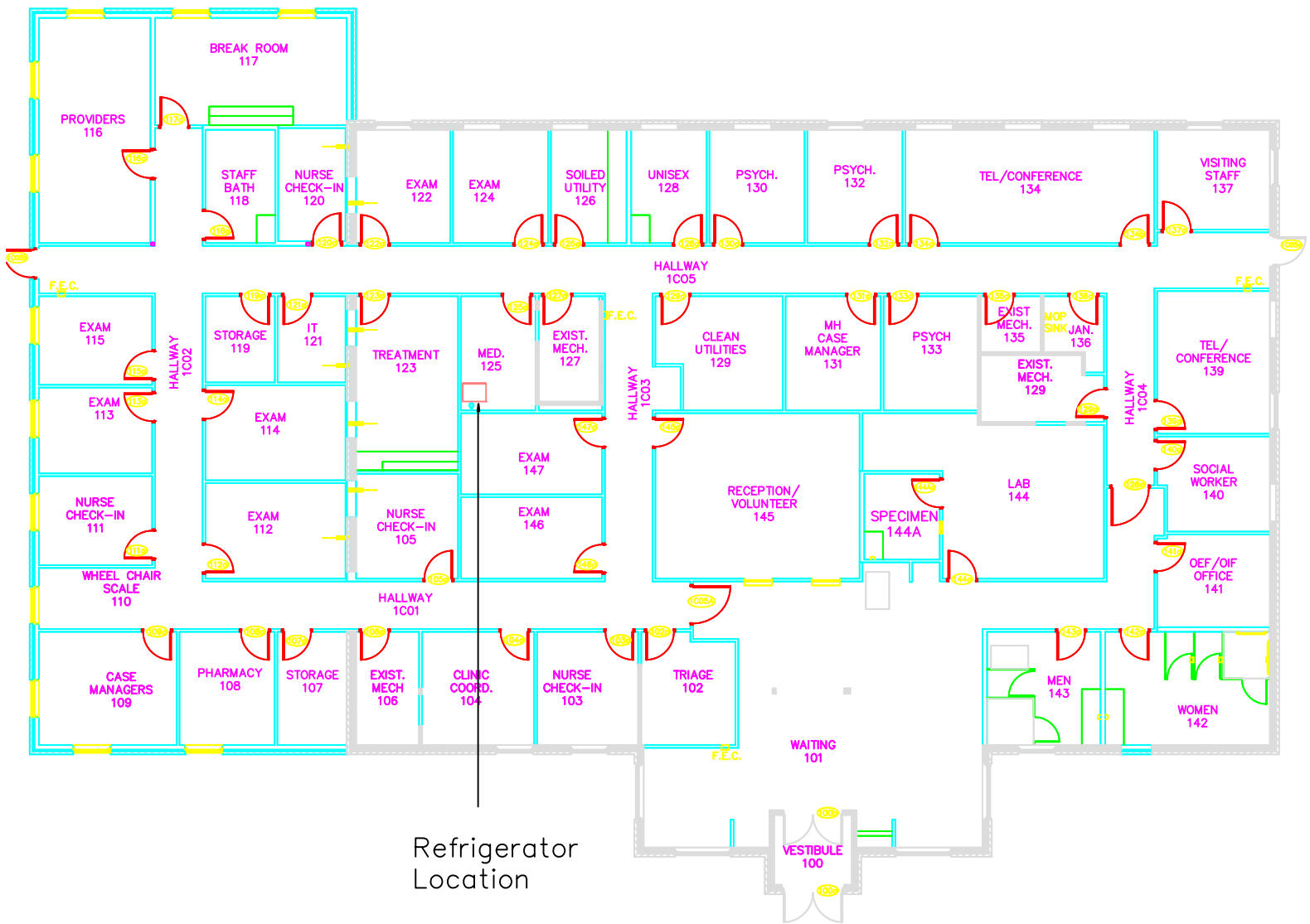
04/26/11 RCB

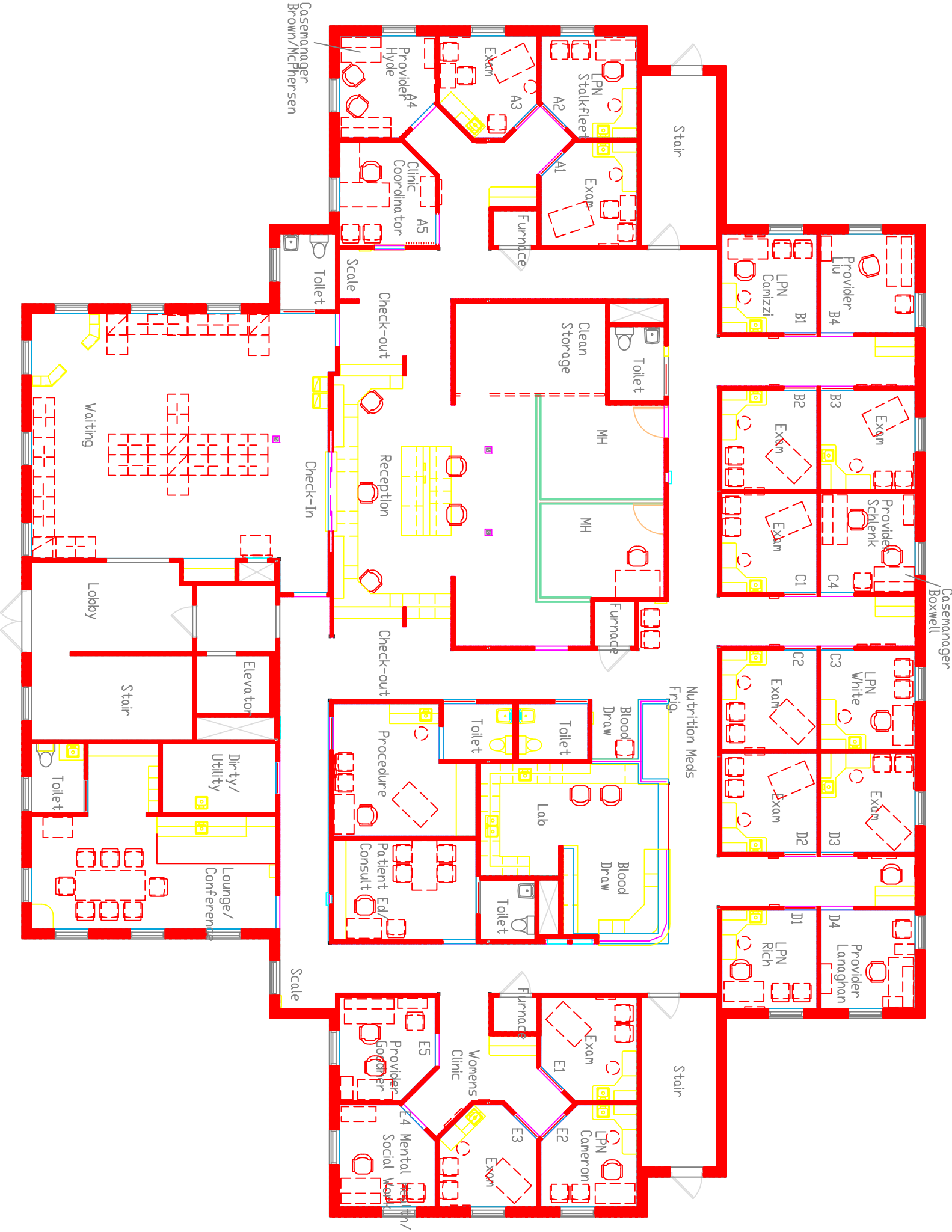
Scale 1/32"=1'

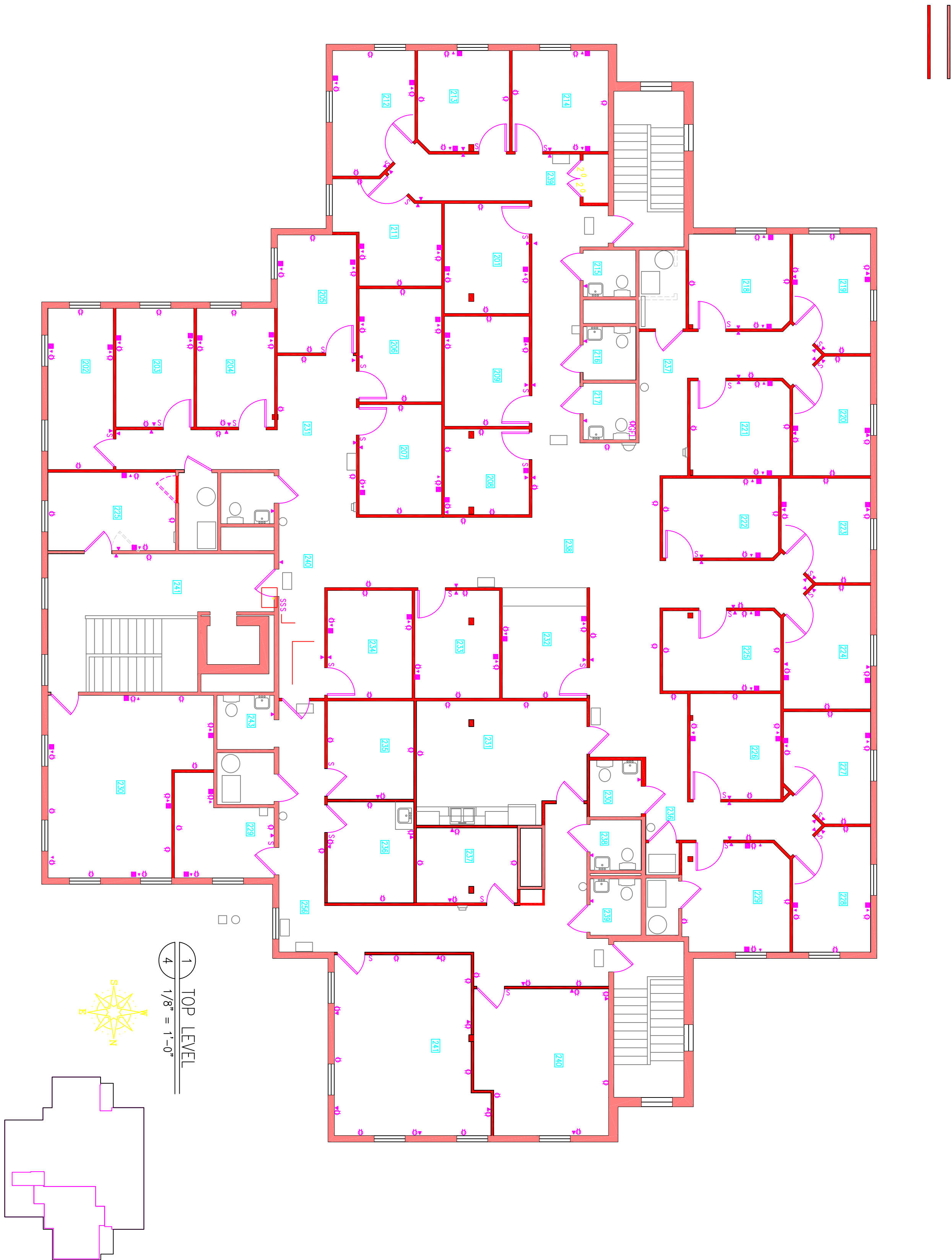


BUILDING NO. 21

Note: All of Bldg 21







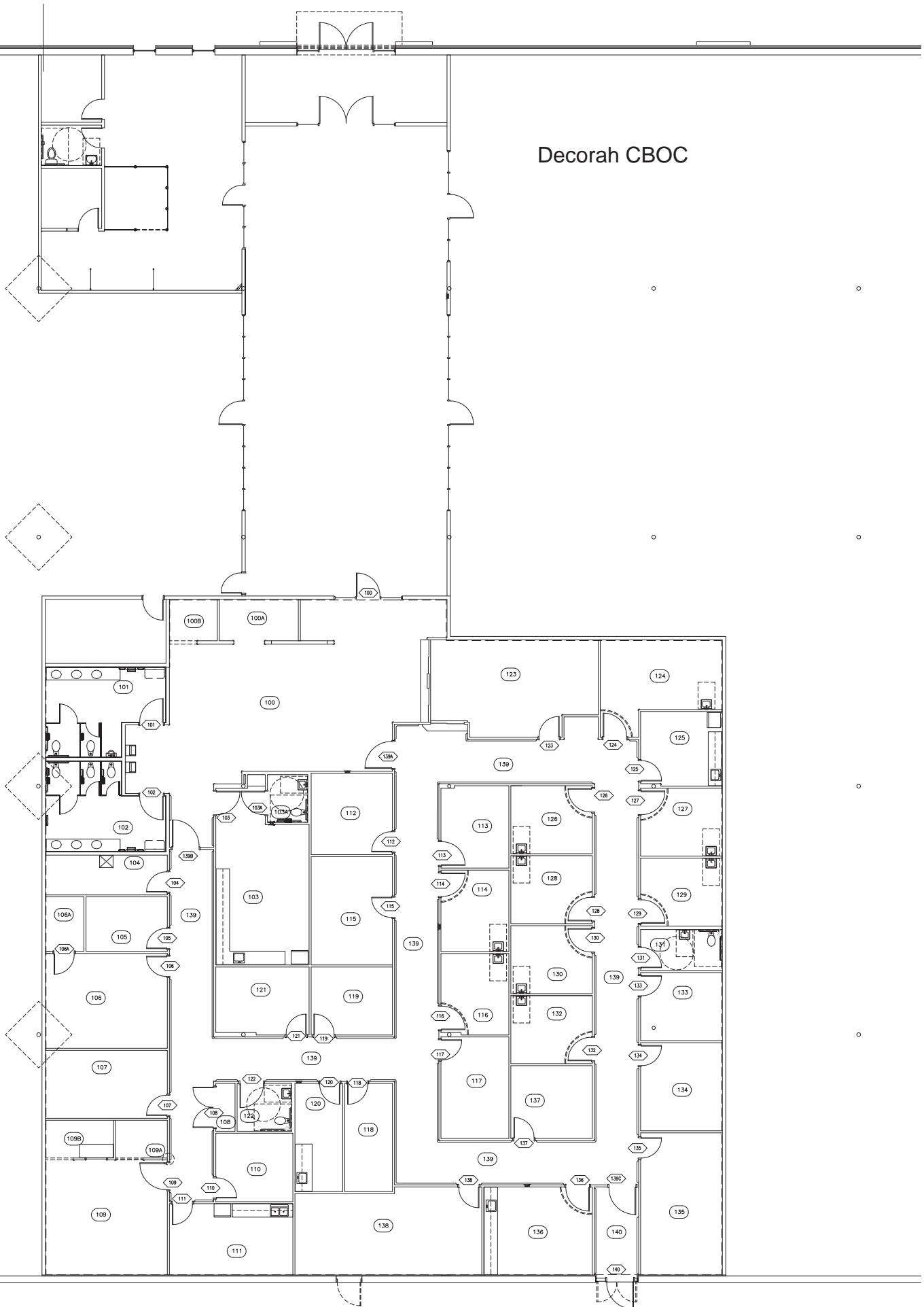
REVISED BY

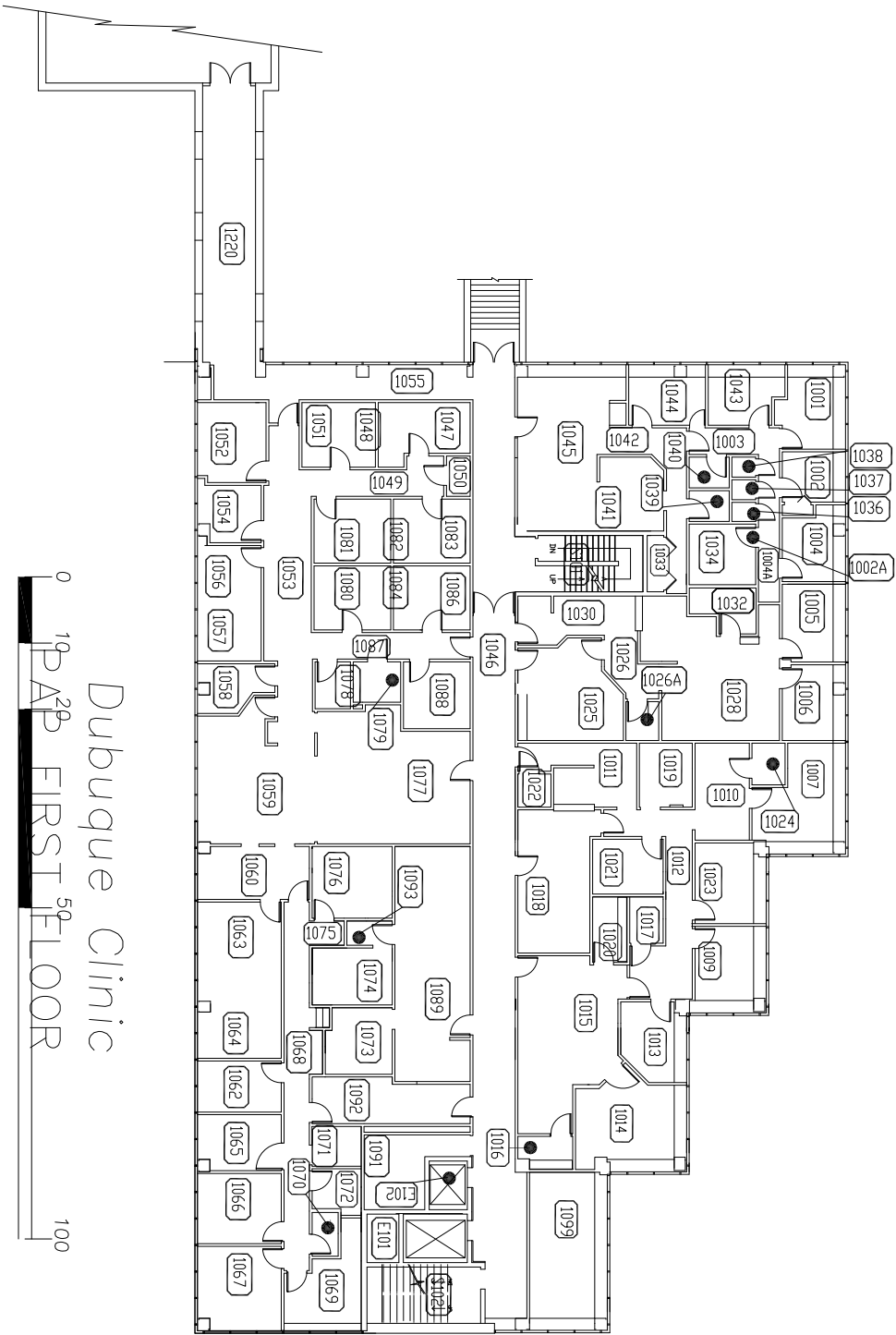
12/31/06

MIKE
NOTED

VA PSYCHOLOGY & PSYCHIATRY CLINIC
520 10th AVENUE, CORALVILLE, IOWA

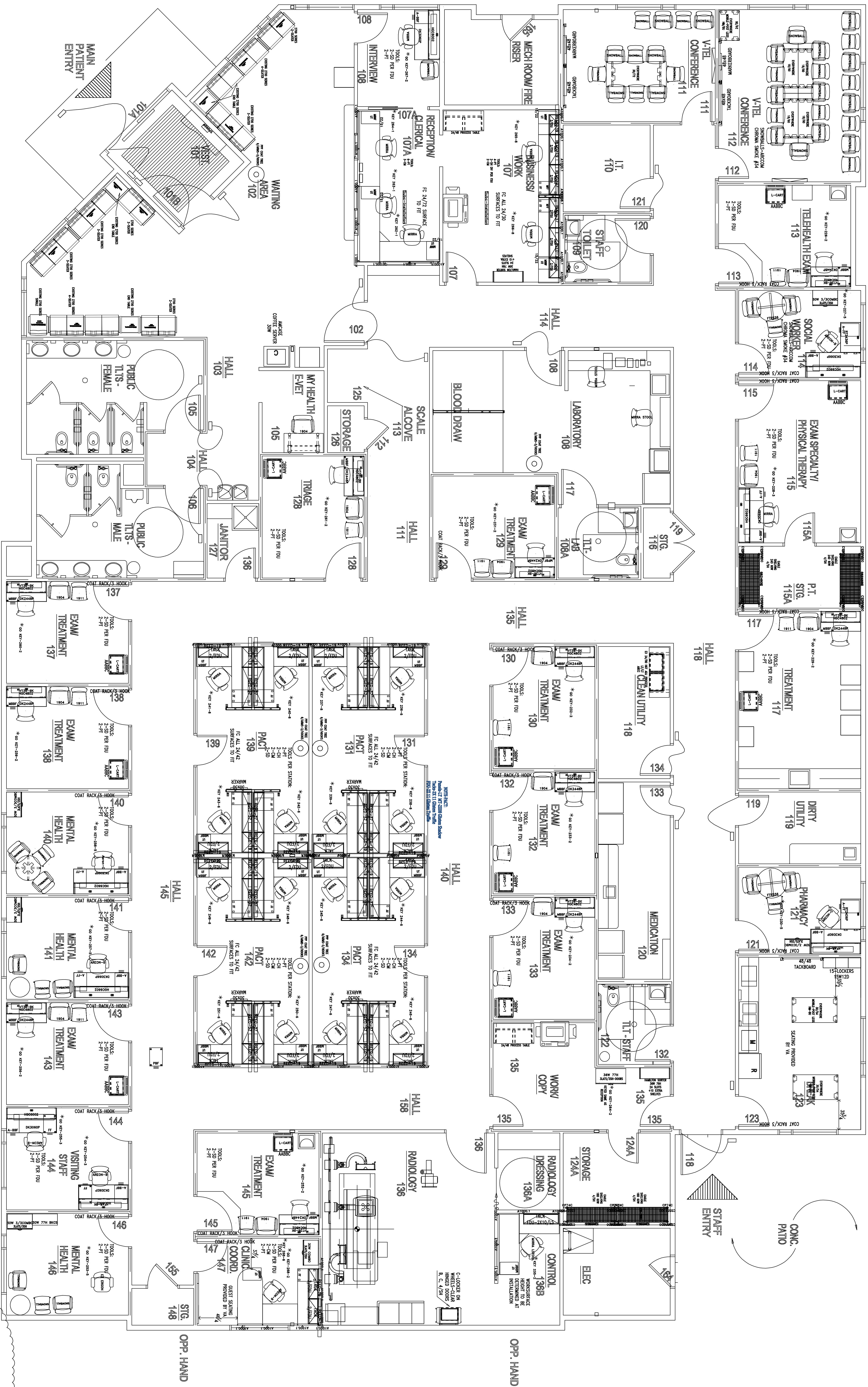
Decorah CBOC

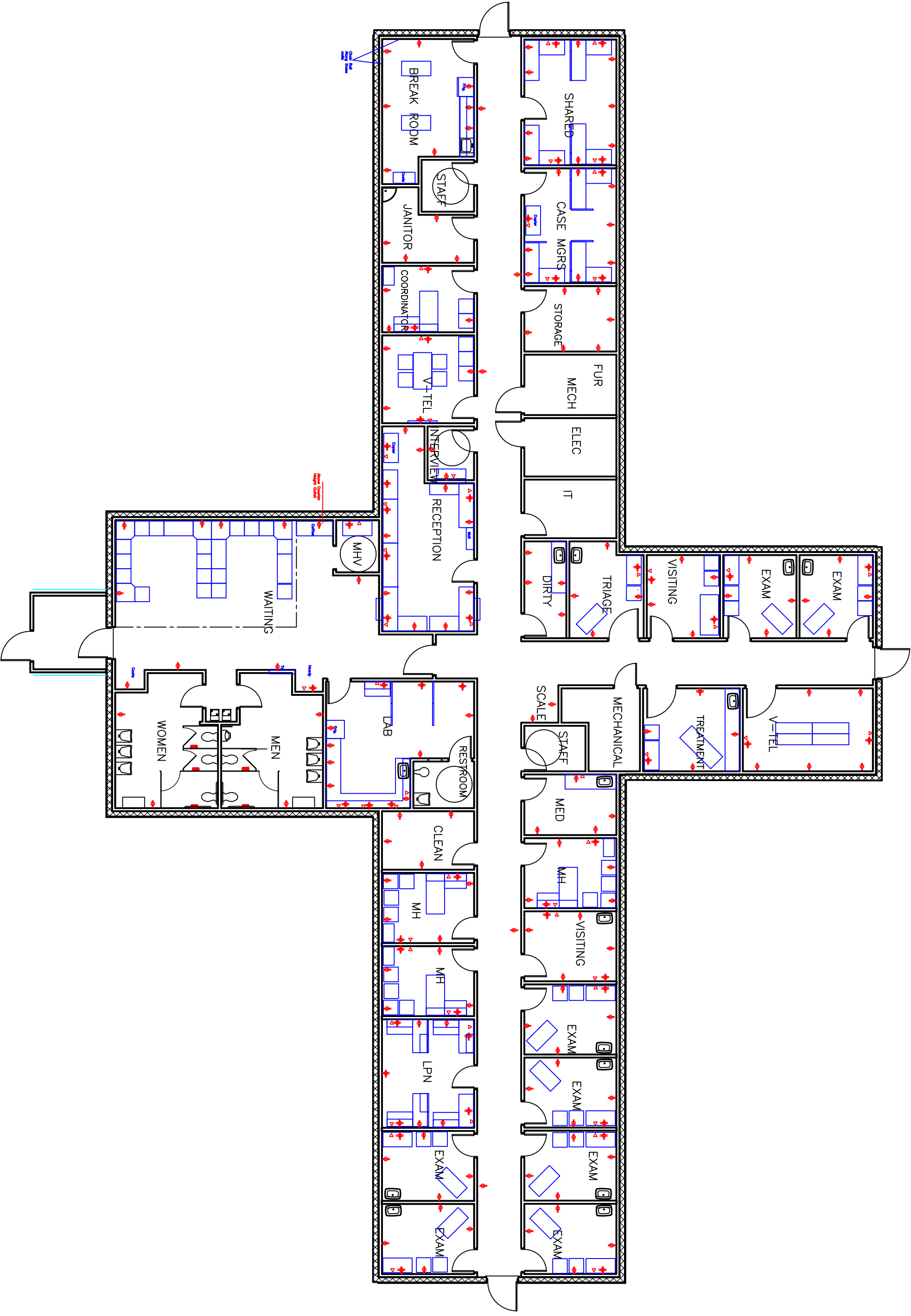


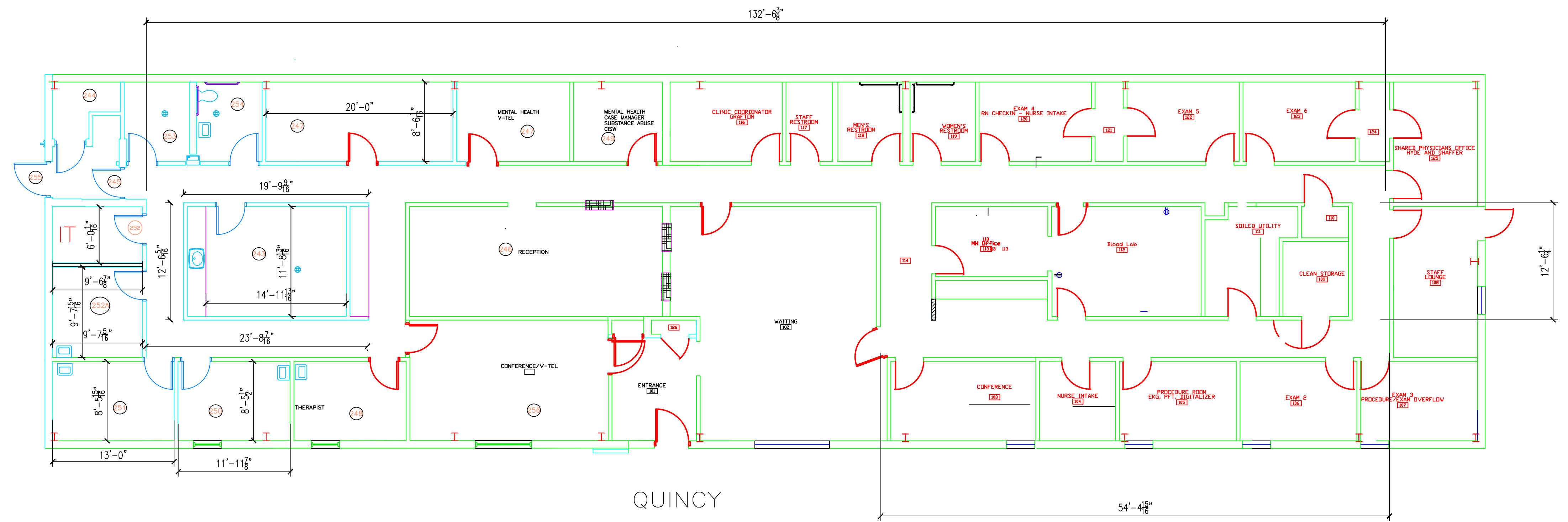


Dubuque Clinic
1st FLOOR

100



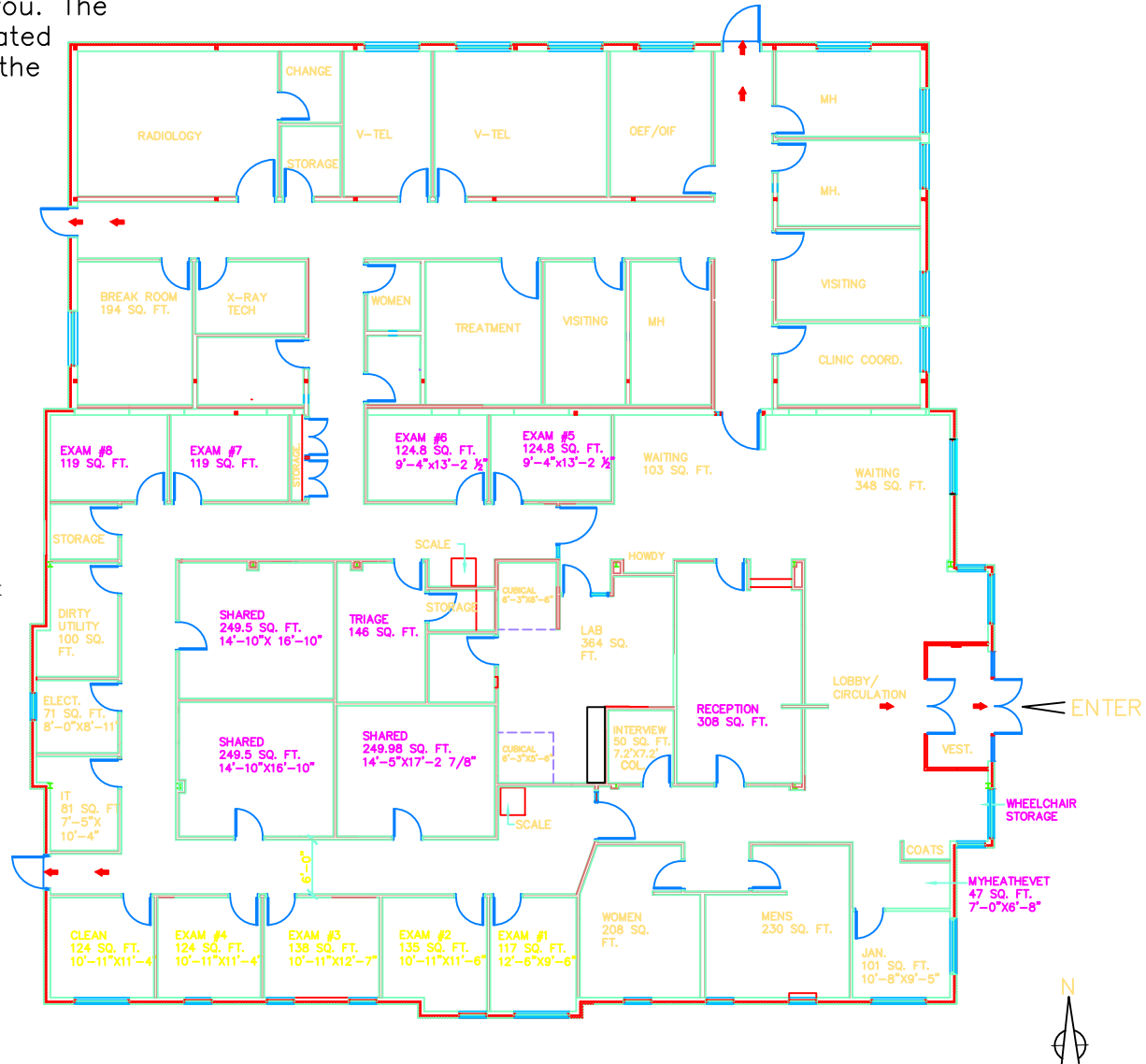




To evacuate the building,
exit the building using the
exit doors nearest you. The
exit doors are indicated
by the arrows on the
diagrams

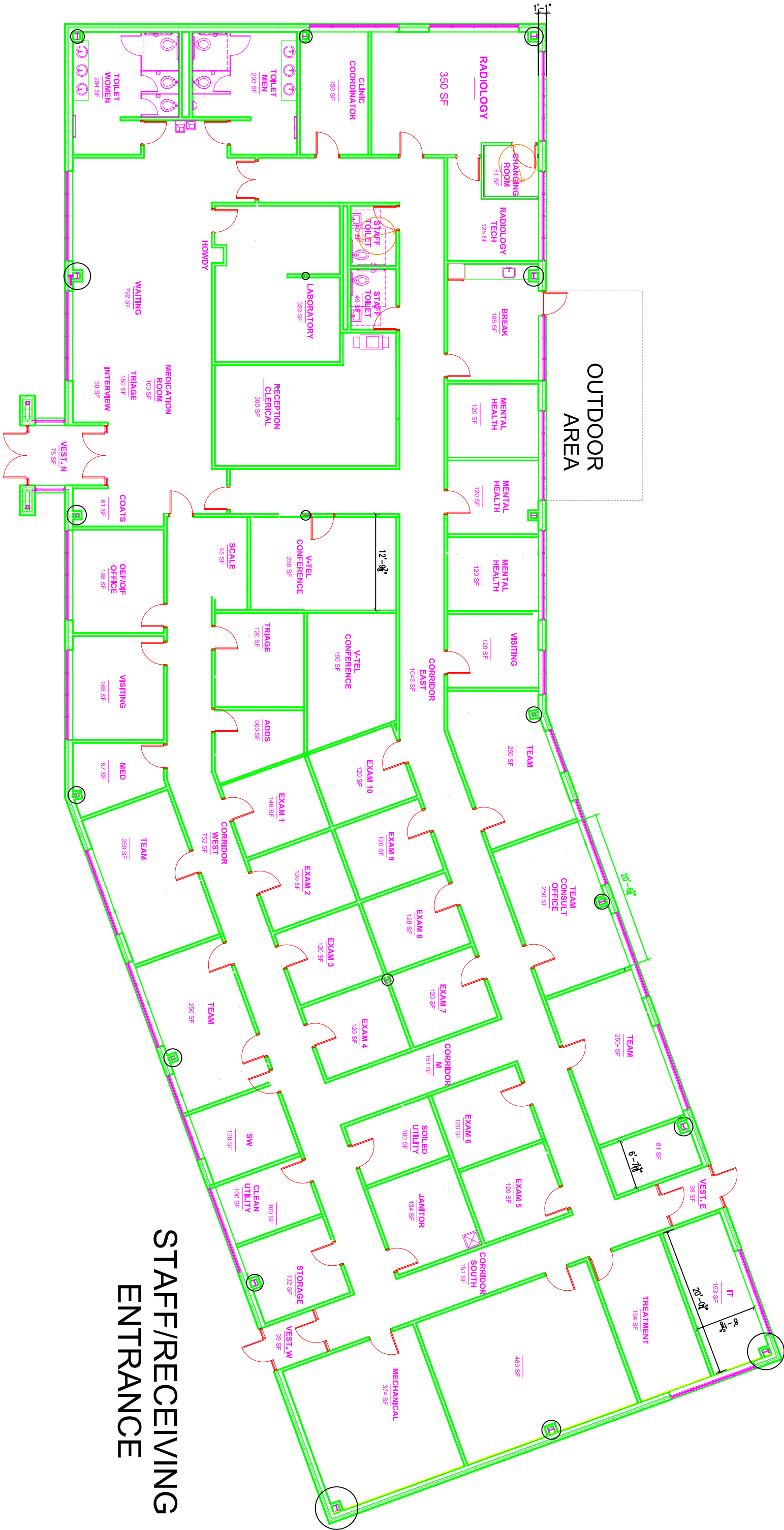
Evacuation Plan

Sterling
406 Avenue C
Sterling, IL 61081



FLOOR PLAN OPTION #3

SCALE: 1/8"=1'-0"
DATE: 1-19-2011



PATIENT/PUBLIC
ENTRANCE

STAFF/RECEIVING
ENTRANCE