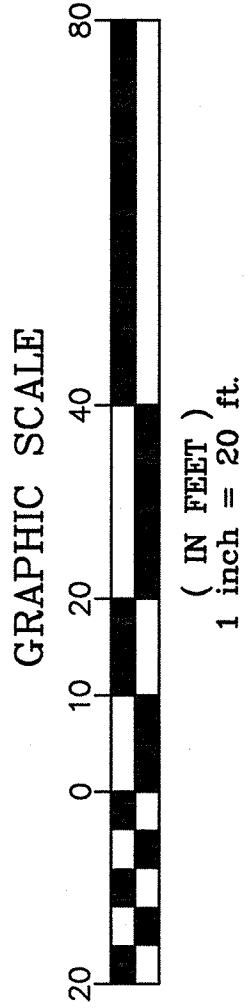


***RETAINING WALL NOTE:**

BASIS OF DESIGN: RETAINING WALL TO BE REDI-ROCK, LEDGESTONE PATTERN. REFER TO STRUCTURAL DRAWINGS.

***INLET FILTER BAG NOTE:**

CONTRACTOR SHALL INSTALL INLET FILTER BAGS IN ALL EXISTING INLETS WITHIN THE LIMIT OF DISTURBANCE PRIOR TO CONSTRUCTION.



PROPOSED LEGEND

- MAJOR CONTOUR
- MINOR CONTOUR
- CONCRETE SIDEWALK
- NYLOPLAST DRAIN BASIN
- INLET
- STORM PIPE (VARYING SIZES)
- NO PARKING AREAS
- CURB
- RETAINING WALL
- ROCK CONSTRUCTION ENTRANCE
- INLET FILTER BAGS
- STORMWATER MANHOLE
- LIMIT OF DISTURBANCE = 1.24 ACRES
- CURB RAMP DOMES

Revisions:	Date

Architect/Engineer:

willow
design
Architecture
SERVICE DISABLED VETERAN OWNED SMALL BUSINESS

Seal: *Arthur J. Lohr 3/21/13*

consulting engineers
p.o. box 998, waretown, pa. 18601 570-342-3101
ceco associates inc.*

E&S PLAN
Scale 1" = 20'
Issued For Final Contract Documents

Project Title Expand and Renovate Urgent Care Area - 15E at Castle Point	Date March 22, 2013
Building Number 15	Project No. 13-01-04
Checked A.C.B.	Drawn C.R.S.
Location 100 Route 9D Castle Point, NY 12511	Drawing No. CE-101

FULLY SPRINKLERED

