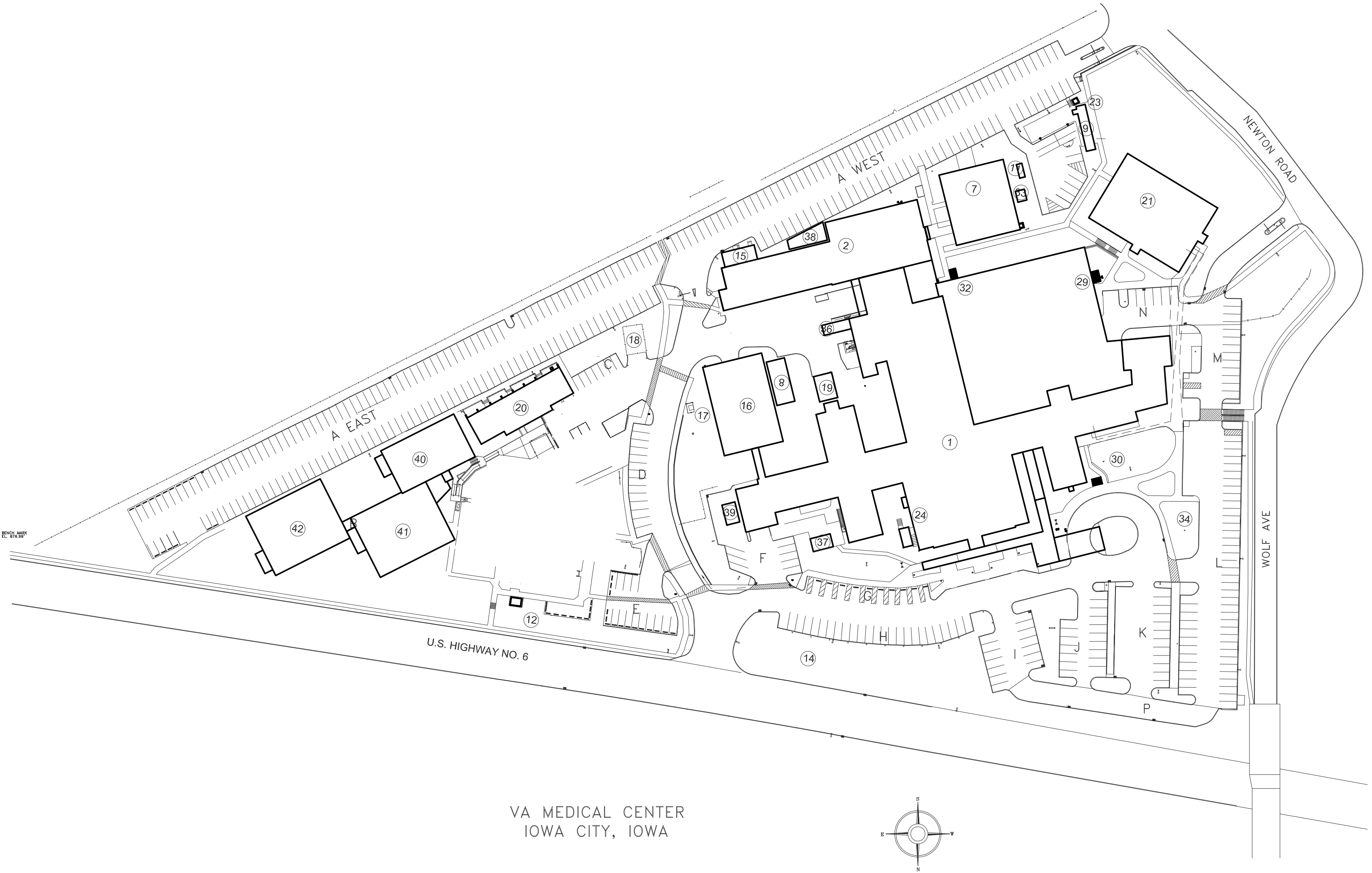


REVISE RESEARCH ERU INTAKES  
PROJECT 636A8-13-003  
IOWA CITY VA HEALTHCARE SYSTEM  
IOWA CITY, IOWA

INDEX OF DRAWINGS

I1	COVER SHEET
1-M1	ROOF PLAN - MECHANICAL
1-E1	ROOF PLAN - ELECTRICAL
1-S0	GENERAL NOTES
1-S1	ROOF FRAMING PLAN

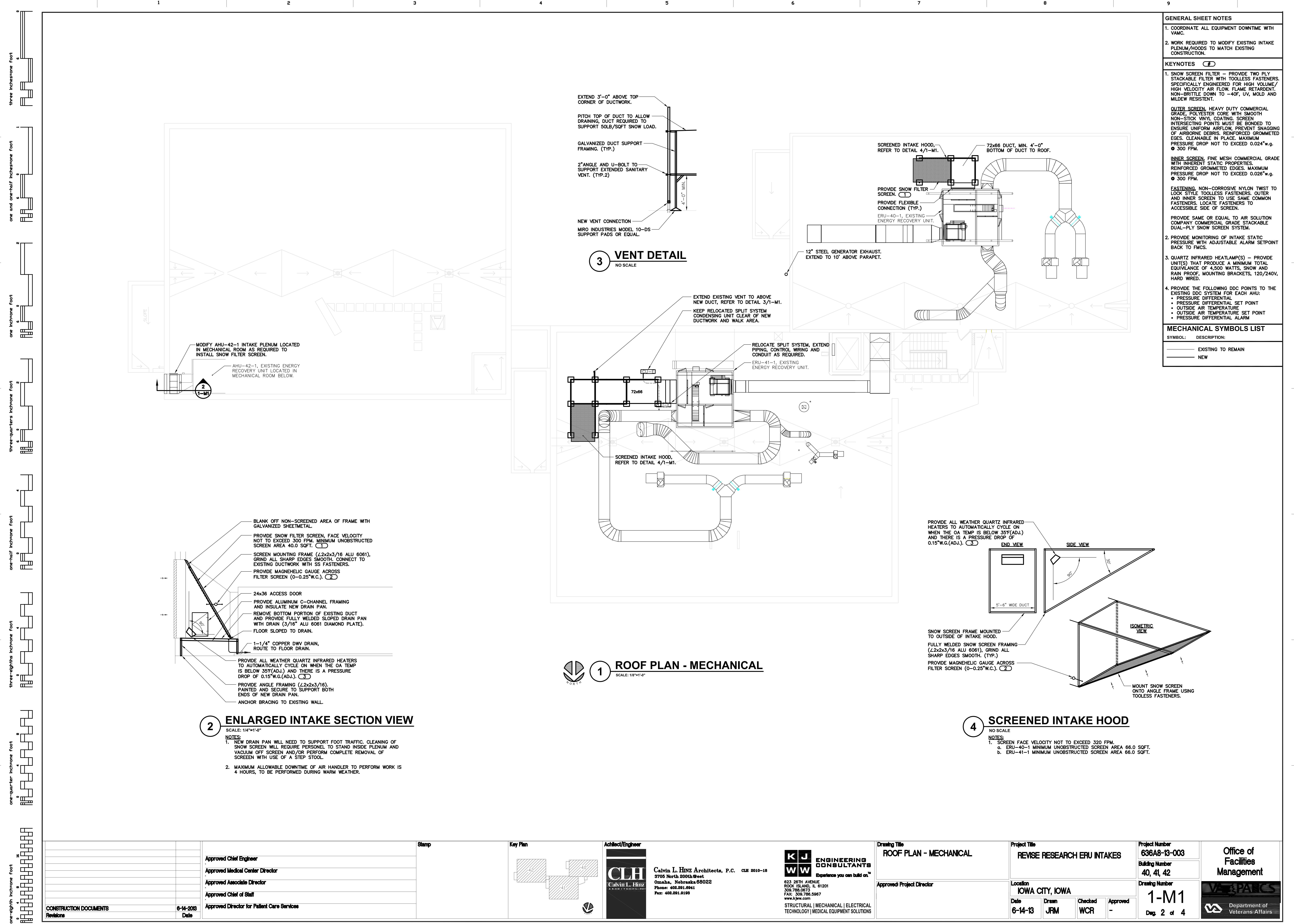
NO.	BUILDING SCHEDULE
1	MAIN HOSPITAL BUILDING
2	RESEARCH & WAREHOUSE
3	RESEARCH LABORATORY
7	CHILLER PLANT BUILDING
8	RECYCLING BUILDING
9	EMERGENCY GENERATOR
10	WALK-IN SWITCHGEAR
11	TRANSFORMER PAD
12	TRANSFORMER PAD
13	TRANSFORMER PAD
14	MAIN ENTRANCE SIGN
15	TRANSFORMER BUILDING
16	BOILER PLANT
17	TRANSFORMER
18	OXYGEN STORAGE
19	STORAGE BUILDING
20	MISCELLANEOUS SERVICE BUILDING
21	ADMINISTRATION OFFICE BUILDING
23	FUEL OIL PUMP HOUSE
24	GAS METER PIT
26	ENGINEERING STORAGE BUILDING
27	REAR ENTRANCE SIGN
28	RESEARCH LABORATORY
29	SMOKING SHELTER
30	SMOKING SHELTER
32	SMOKING SHELTER
33	TRANSFORMER PAD
34	FLAGPOLE
35	TRANSFORMER PAD
36	INCINERATOR BUILDING
37	SHELTER
38	EMERGENCY GENERATOR BUILDING
39	SMOKING SHELTER
40	RESEARCH LABORATORY
41	RESEARCH LABORATORY
42	RESEARCH LABORATORY



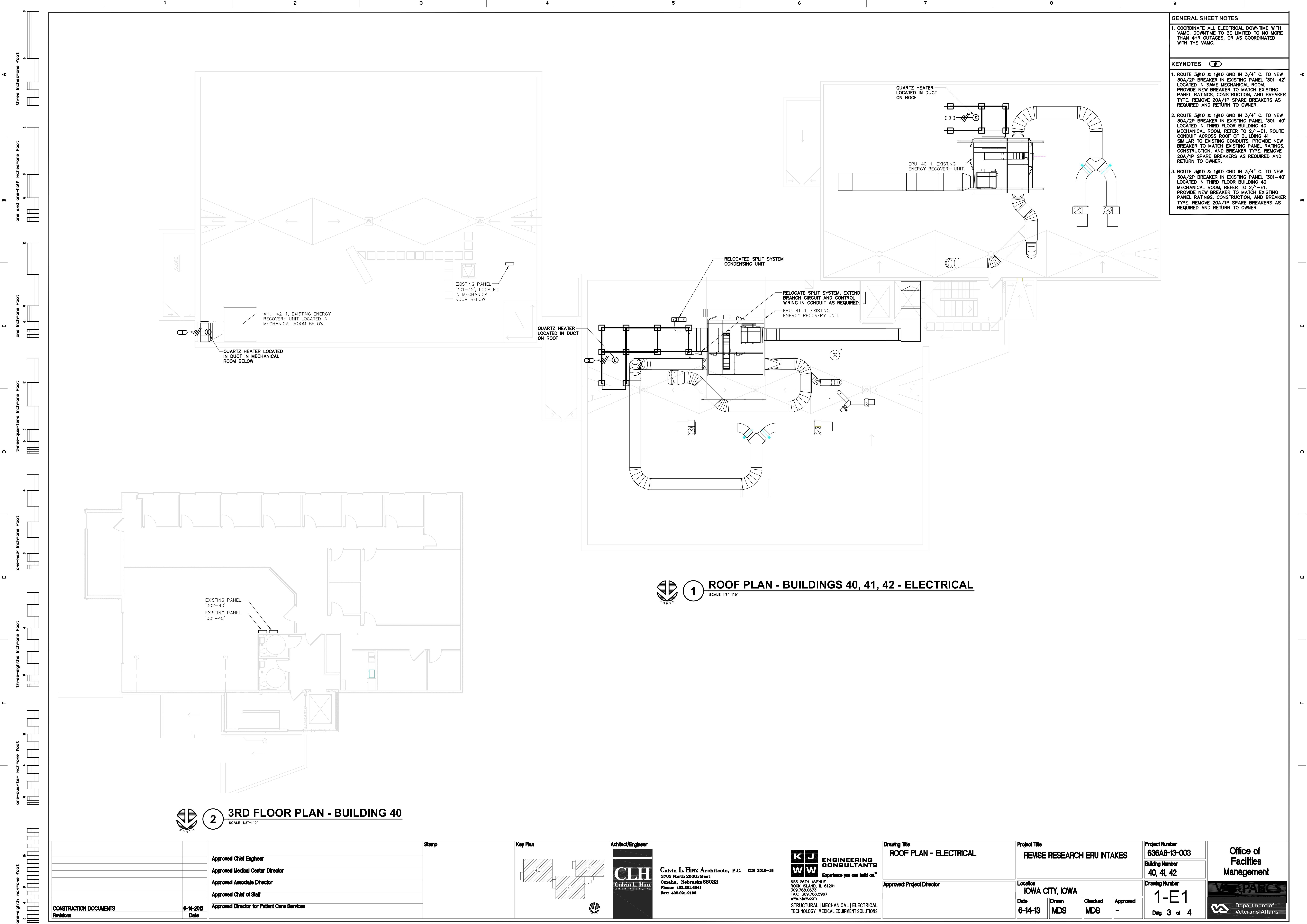
VA MEDICAL CENTER  
IOWA CITY, IOWA

<div>CONSTRUCTION DOCUMENTS</div> <div>Revisions</div>		<div>Approved Chief Engineer</div> <div>Approved Medical Center Director</div> <div>Approved Associate Director</div> <div>Approved Chief of Staff</div> <div>Approved Director for Patient Care Services</div>	<div>Stamp</div>	<div>Key Plan</div>	<div>Achitect/Engineer</div> <div>CLH</div> <div>Calvin L. Hinz Architects, P.C. CLH 2010-18</div> <div>3705 North 200th Street</div> <div>Omaha, Nebraska 68022</div> <div>Phone: 402.291.0941</div> <div>Fax: 402.291.0193</div>	<div>KJWW</div> <div>ENGINEERING CONSULTANTS</div> <div>Experience you can build on.™</div> <div>623 28TH AVENUE</div> <div>ROCK ISLAND, IL 61201</div> <div>309.788.0673</div> <div>FAX: 309.788.5967</div> <div>www.kjww.com</div> <div>STRUCTURAL   MECHANICAL   ELECTRICAL</div> <div>TECHNOLOGY   MEDICAL EQUIPMENT SOLUTIONS</div>	<div>Drawing Title</div> <div>COVER SHEET</div> <div>Approved Project Director</div>	<div>Project Title</div> <div>REVISE RESEARCH ERU INTAKES</div> <div>Location</div> <div>IOWA CITY, IOWA</div> <div>Date</div> <div>6-14-13</div> <div>Drawn</div> <div>JRM</div> <div>Checked</div> <div>WCR</div> <div>Approved</div> <div>-</div>	<div>Project Number</div> <div>636A8-13-003</div> <div>Building Number</div> <div>40, 41, 42</div> <div>Drawing Number</div> <div>11</div> <div>Dwg. 1 of 4</div>	<div>Office of Facilities Management</div> <div>Department of Veterans Affairs</div>
--	--	---	------------------	---------------------	--	--	--	--	---	--









- GENERAL SHEET NOTES
1. COORDINATE ALL ELECTRICAL DOWNTIME WITH VAMC. DOWNTIME TO BE LIMITED TO NO MORE THAN 4HR OUTAGES, OR AS COORDINATED WITH THE VAMC.
- KEYNOTES
1. ROUTE 3/8" & 1/8" GND IN 3/4" C. TO NEW 30A/2P BREAKER IN EXISTING PANEL '301-42' LOCATED IN SAME MECHANICAL ROOM. PROVIDE NEW BREAKER TO MATCH EXISTING PANEL RATINGS, CONSTRUCTION, AND BREAKER TYPE. REMOVE 20A/1P SPARE BREAKERS AS REQUIRED AND RETURN TO OWNER.

2. ROUTE 3/8" & 1/8" GND IN 3/4" C. TO NEW 30A/2P BREAKER IN EXISTING PANEL '301-40' LOCATED IN THIRD FLOOR BUILDING 40 MECHANICAL ROOM. REFER TO 2/1-E1. ROUTE CONDUIT ACROSS ROOF OF BUILDING 41 SIMILAR TO EXISTING CONDUITS. PROVIDE NEW BREAKER TO MATCH EXISTING PANEL RATINGS, CONSTRUCTION, AND BREAKER TYPE. REMOVE 20A/1P SPARE BREAKERS AS REQUIRED AND RETURN TO OWNER.

3. ROUTE 3/8" & 1/8" GND IN 3/4" C. TO NEW 30A/2P BREAKER IN EXISTING PANEL '301-40' LOCATED IN THIRD FLOOR BUILDING 40 MECHANICAL ROOM. REFER TO 2/1-E1. PROVIDE NEW BREAKER TO MATCH EXISTING PANEL RATINGS, CONSTRUCTION, AND BREAKER TYPE. REMOVE 20A/1P SPARE BREAKERS AS REQUIRED AND RETURN TO OWNER.

1

ROOF PLAN - BUILDINGS 40, 41, 42 - ELECTRICAL

SCALE: 1/8"=1'-0"

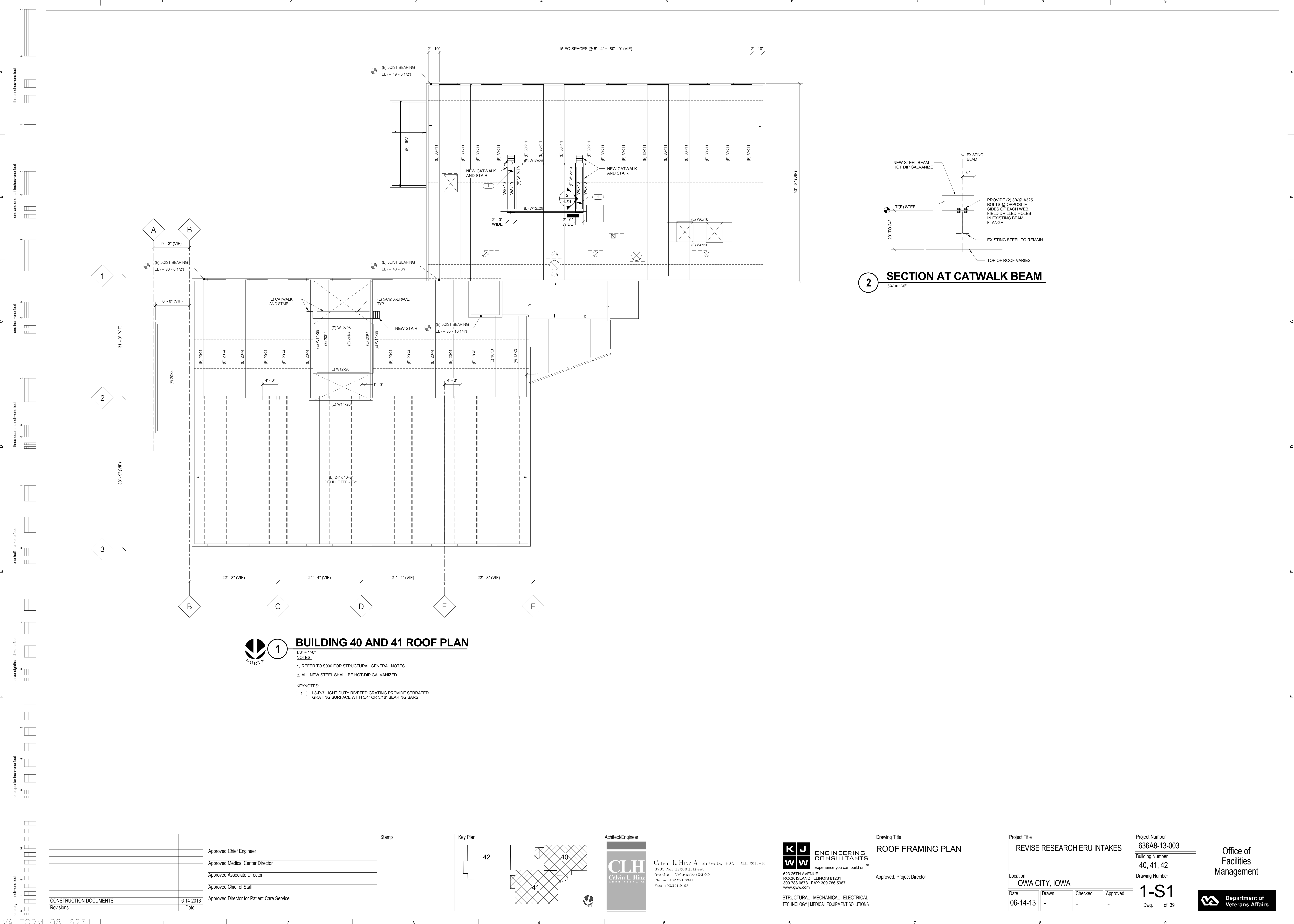
2

3RD FLOOR PLAN - BUILDING 40

SCALE: 1/8"=1'-0"

<div>CONSTRUCTION DOCUMENTS</div> <div>Revisions</div>		<div>Approved Chief Engineer</div> <div>Approved Medical Center Director</div> <div>Approved Associate Director</div> <div>Approved Chief of Staff</div> <div>Approved Director for Patient Care Services</div>		<div>Stamp</div>		<div>Key Plan</div> <div></div>		<div>Achitect/Engineer</div> <div><div>CLH</div><div>Calvin L. Hinz</div><div>ARCHITECTS</div></div> <div>Calvin L. Hinz Architects, P.C. CLH 2010-18</div> <div>3705 North 200th Street</div> <div>Omaha, Nebraska 681022</div> <div>Phone: 402.291.8941</div> <div>Fax: 402.291.9193</div>		<div><div>KJWW</div><div>ENGINEERING CONSULTANTS</div><div>Experience you can build on.™</div></div> <div>623 26TH AVENUE</div> <div>ROCK ISLAND, IL 61201</div> <div>309.788.0673</div> <div>FAX: 309.788.0987</div> <div>www.kjww.com</div> <div>STRUCTURAL   MECHANICAL   ELECTRICAL</div> <div>TECHNOLOGY   MEDICAL EQUIPMENT SOLUTIONS</div>		<div>Drawing Title</div> <div>ROOF PLAN - ELECTRICAL</div> <div>Approved Project Director</div>		<div>Project Title</div> <div>REVISE RESEARCH ERU INTAKES</div> <div>Location</div> <div>IOWA CITY, IOWA</div> <div>Date</div> <div>6-14-13</div> <div>Drawn</div> <div>MDS</div> <div>Checked</div> <div>MDS</div> <div>Approved</div> <div>-</div>		<div>Project Number</div> <div>636A8-13-003</div> <div>Building Number</div> <div>40, 41, 42</div> <div>Drawing Number</div> <div>1-E1</div> <div>Dep. 3 of 4</div>		<div>Office of Facilities Management</div> <div> Department of Veterans Affairs</div>	
--	--	---	--	------------------	--	---------------------------------	--	--	--	---	--	---	--	--	--	---	--	---	--

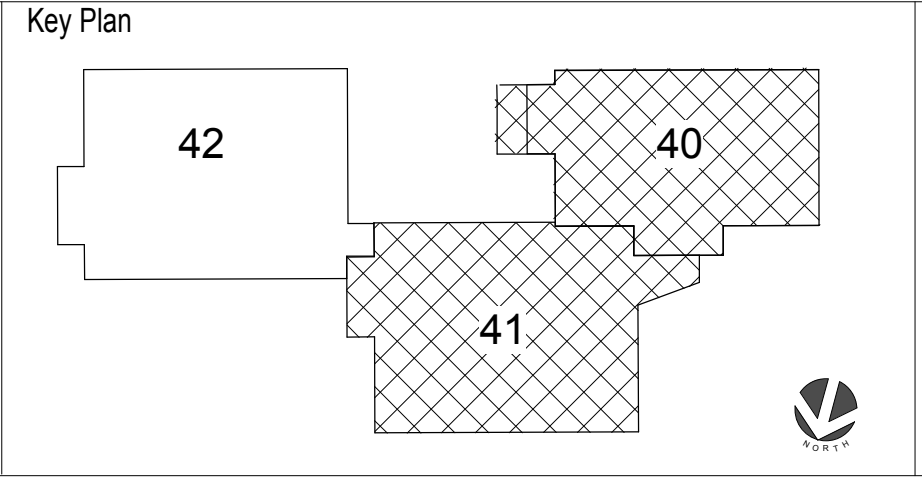




CONSTRUCTION DOCUMENTS	6-14-2013
Revisions	Date

Approved Chief Engineer
Approved Medical Center Director
Approved Associate Director
Approved Chief of Staff
Approved Director for Patient Care Service

Stamp



Calvin L. Hinz Architects, P.C. CLH 3010-18  
3705 North 200th Street  
Omaha, Nebraska 68122  
Phone: 402.291.6944 FAX: 402.291.6967  
www.kjww.com

**KJWW** ENGINEERING CONSULTANTS  
Experience you can build on™

623 26TH AVENUE  
ROCK ISLAND, ILLINOIS 61201  
309.788.0673 FAX: 309.786.5967  
www.kjww.com

STRUCTURAL | MECHANICAL | ELECTRICAL  
TECHNOLOGY | MEDICAL EQUIPMENT SOLUTIONS

Drawing Title
ROOF FRAMING PLAN
Approved: Project Director

Project Title
REVISE RESEARCH ERU INTAKES
Location
IOWA CITY, IOWA
Date
06-14-13
Drawn
-
Checked
-
Approved
-

Project Number
636A8-13-003
Building Number
40, 41, 42
Drawing Number
1-S1
Dwg. of 39

