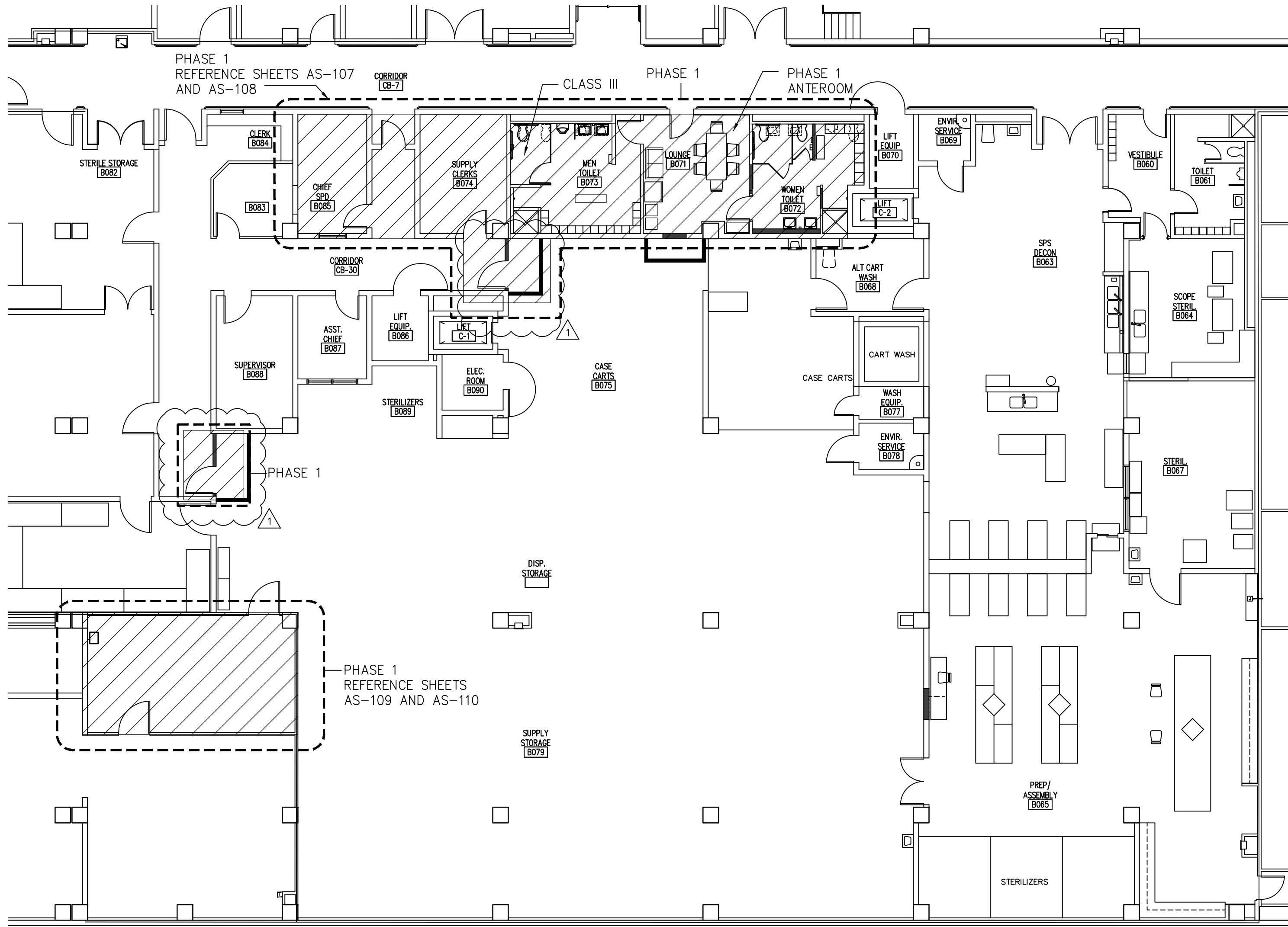
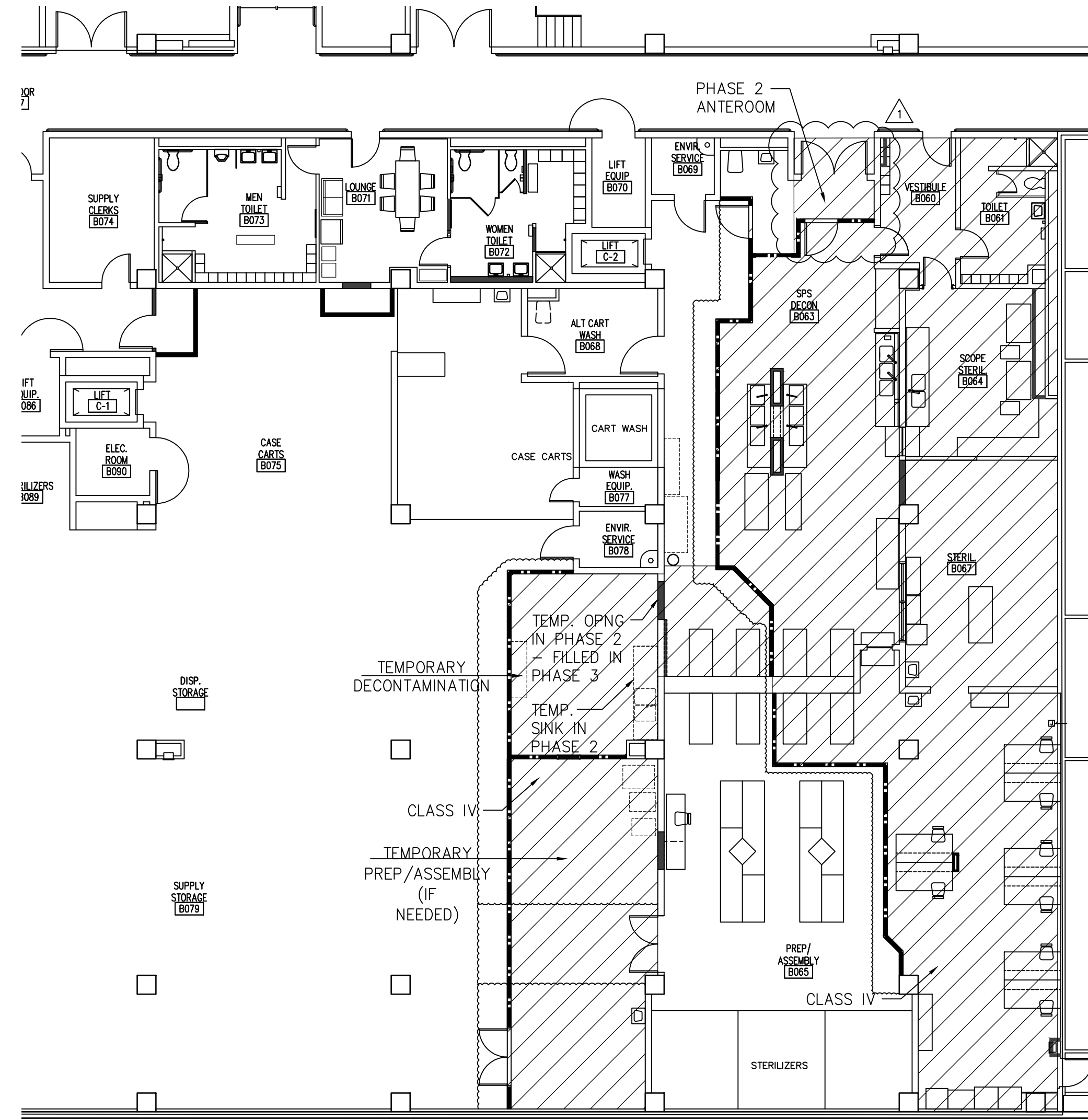


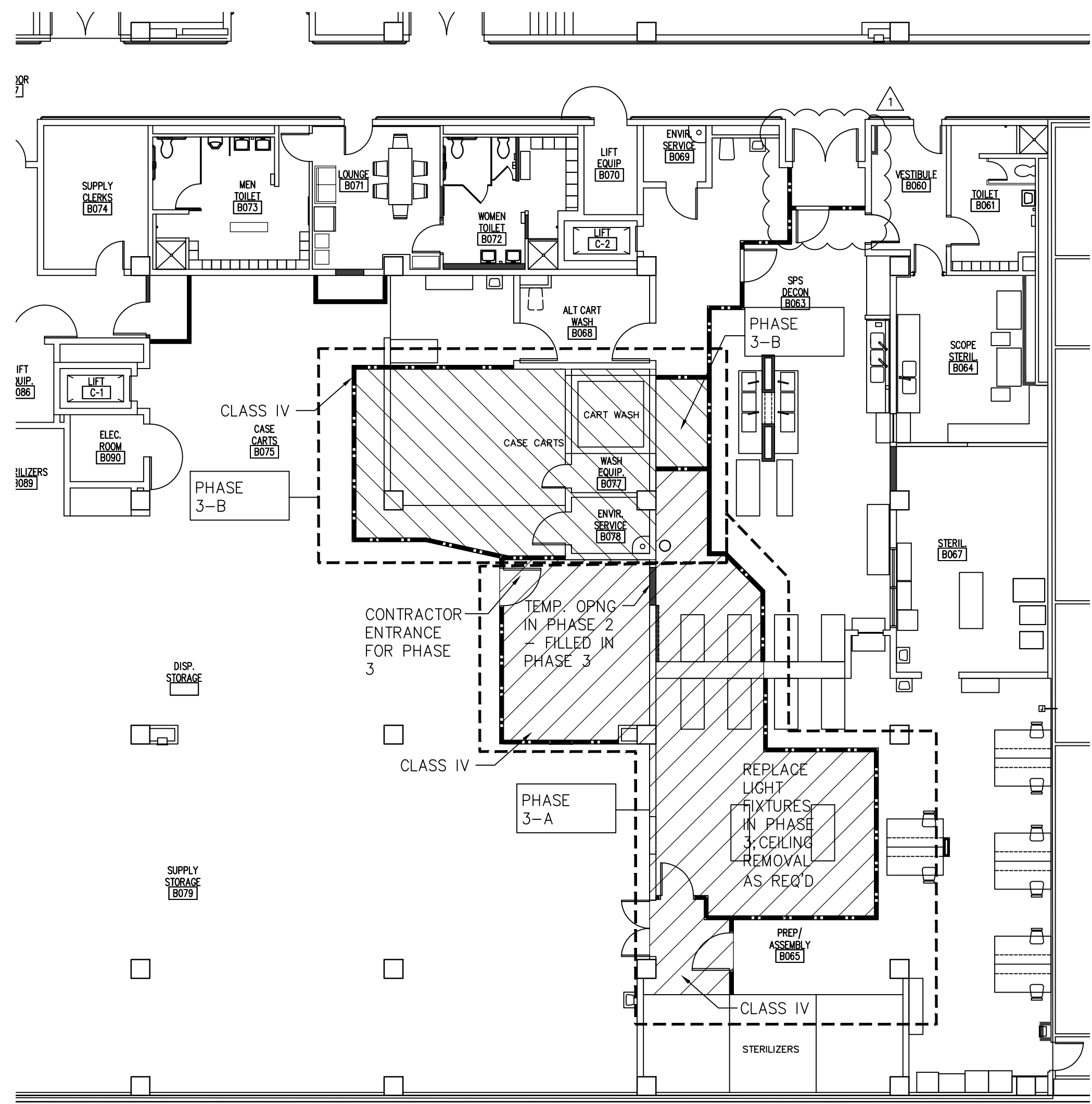
three inches = one foot  
one and one half inches = one foot  
one inch = one foot  
three quarters inch = one foot  
one half inch = one foot  
three eighths inch = one foot  
one quarter inch = one foot  
one eighth inch = one foot



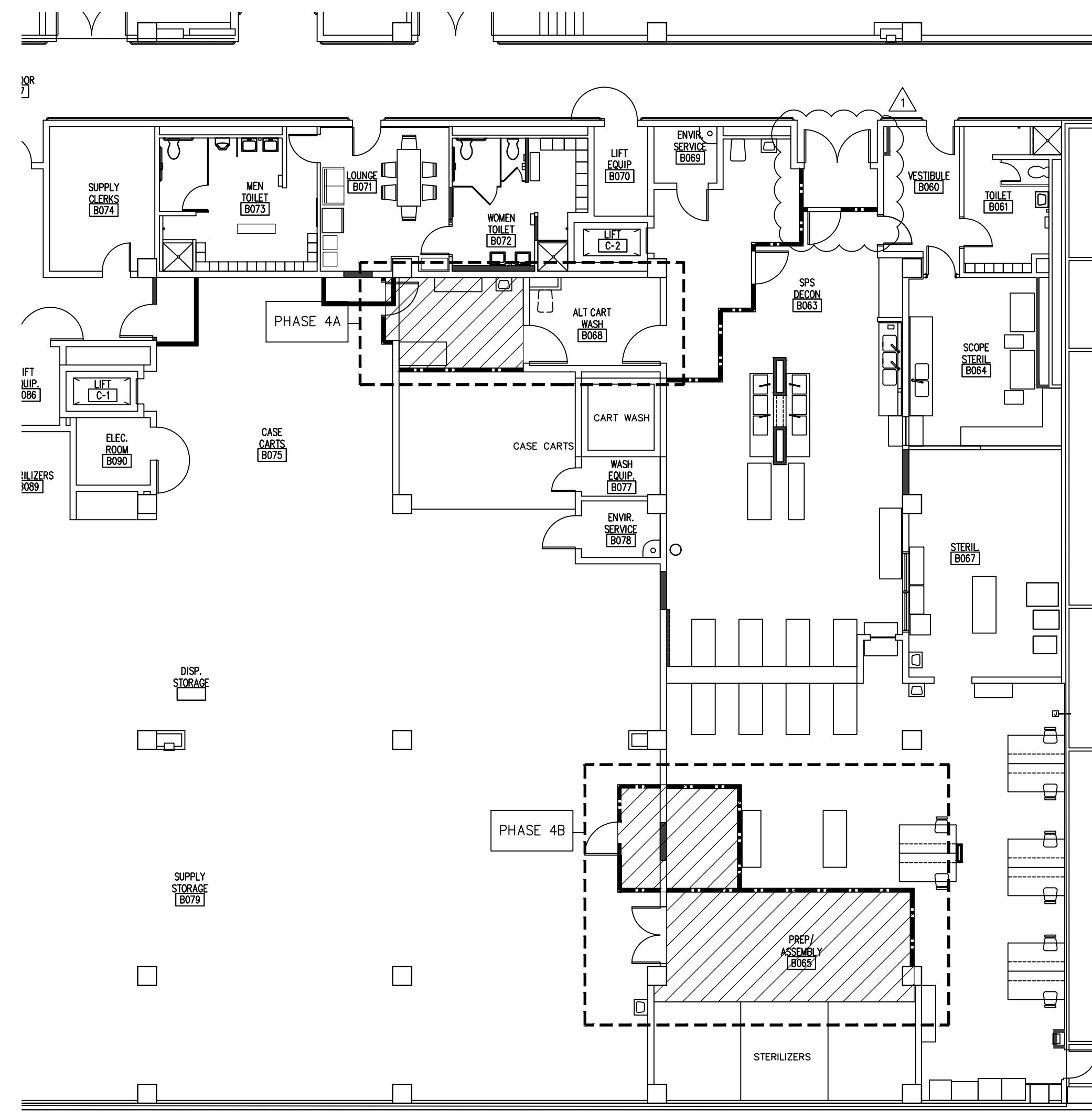
PHASING PLAN - PHASE 1  
SCALE: 3/32" = 1'-0"



PHASING PLAN - PHASE 2  
SCALE: 3/32" = 1'-0"



PHASING PLAN - PHASE 3  
SCALE: 3/32" = 1'-0"



PHASING PLAN - PHASE 4  
SCALE: 3/32" = 1'-0"

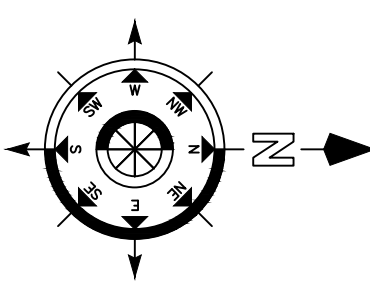
35% SD SUBMITTAL	1/11/4/2012
35% SD REVISION 1	1/12/2012
65% CD SUBMITTAL	12/20/2012
35% CD SUBMITTAL	01/30/2013
100% CD SUBMITTAL	02/27/2013
BIDDING DOCUMENTS	06/10/2013
AMENDMENT 2	06/07/2013
Revisions:	Date



Dept. of Veterans Affairs  
Richard L. Roudebush  
VA Medical Center  
1481 W. 10th Street  
Indianapolis, IN 46202

CERTIFIED BY:

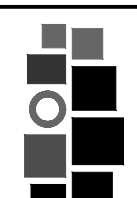
NORTH REFERENCE



ARCHITECT/ENGINEERS:



USGD LLC  
9245 Calumet Ave., Suite 205,  
Munster, IN 46321  
(219) 836-2120 Fax (219) 836-1129



AMERICAN  
STRUCTUREPOINT  
INC.  
7260 Shadeland Station | Indianapolis, Indiana 46266  
TEL 317.547.5580 | FAX 317.543.0270  
www.structurepoint.com

Drawing Title

CONSTRUCTION PHASING PLANS

PROJECT ENGINEER

John Fiwowski

SCALE

Approved Engineering Chief

Approved Service Chief

Project Title

RENOVATE SPS

Location

BASEMENT A-WING

Date

6/10/2013

Checked

FMF

Drawn

VFS

Project Number

583-12-107

Building Number

1

Drawing Number

AS-100

3FY12

9 of 55

BIDDING DOCUMENTS  
FULLY SPRINKLERED

Engineering  
and Facilities  
Management  
Services

Department of  
Veterans Affairs