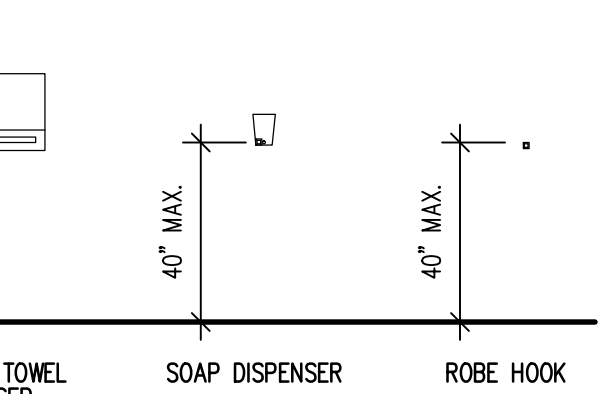


CC = CONTRACTOR PROVIDED, CONTRACTOR INSTALLED
VC = OWNER PROVIDED, CONTRACTOR INSTALLED

	MOUNTING HEIGHT
CC	36" AFF TO TOP (MAX.)
CC	36" AFF TO TOP (MAX.)
CC	41" MAX. TO BTM. OF GRAB BAR
WC	19" CENTERLINE AFF
CC	30" MAX. TO TOP
CC	40" MAX TO BTM.
CC	40" MAX TO TOP OF FLANGE
WC	40" MAX TO BTM. OF DISPENSER
WC	40" MAX TO BTM. OF DISPENSER


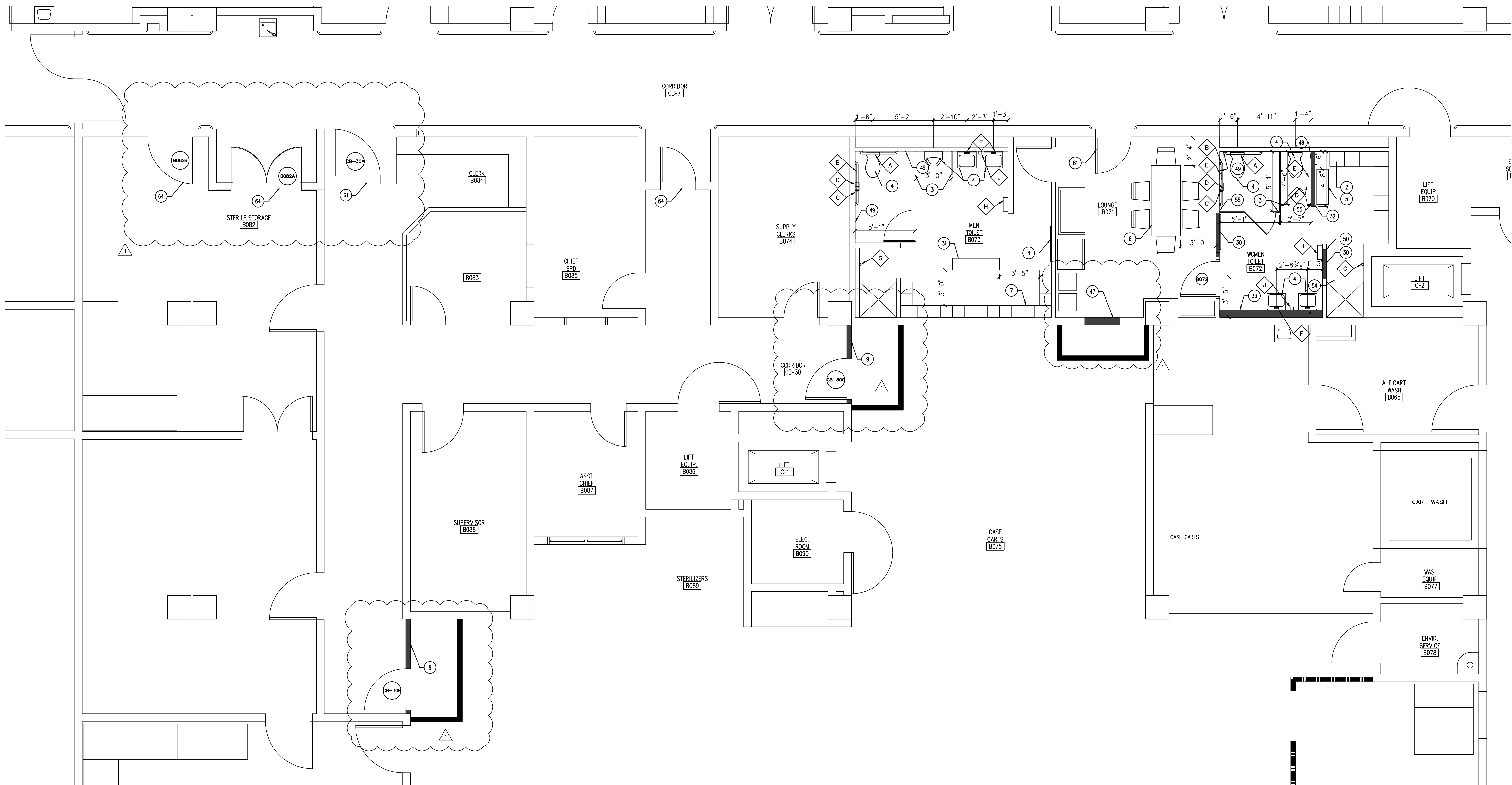
LABORATORIES TO BE INSULATED



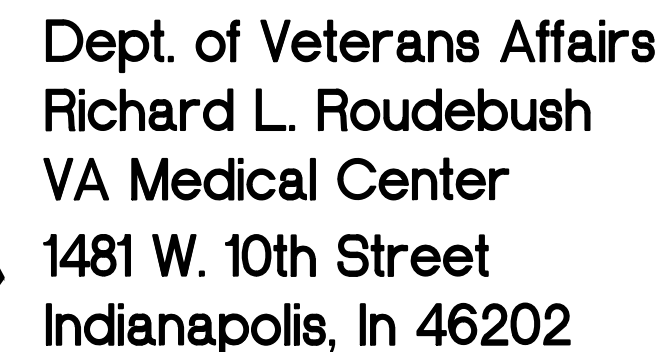
- NOTE: FOR ADDITIONAL PHASE 1 WORK SEE SHEETS AS-107 THROUGH AS-110

1

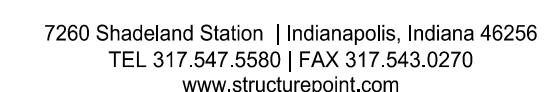
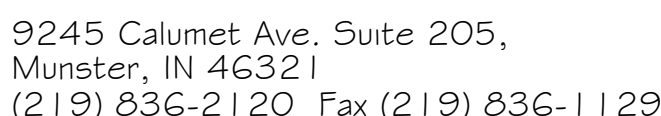
-



Dept. of Veterans Affairs
Richard L. Roudebush
VA Medical Center
1481 W. 10th Street
Indianapolis, In 46202



NORTH REFERENCE



Project Title RENOVATE SPS			Project Number 583-12-107	
			Building Number 1	
Location BASEMENT A-WING			Drawing Number AS-102	
Date 6 / 10 / 2013	Checked FMF	Drawn VFS	3FY12	
			11 of 55	

Engineering
and Facilities
Management
Services

