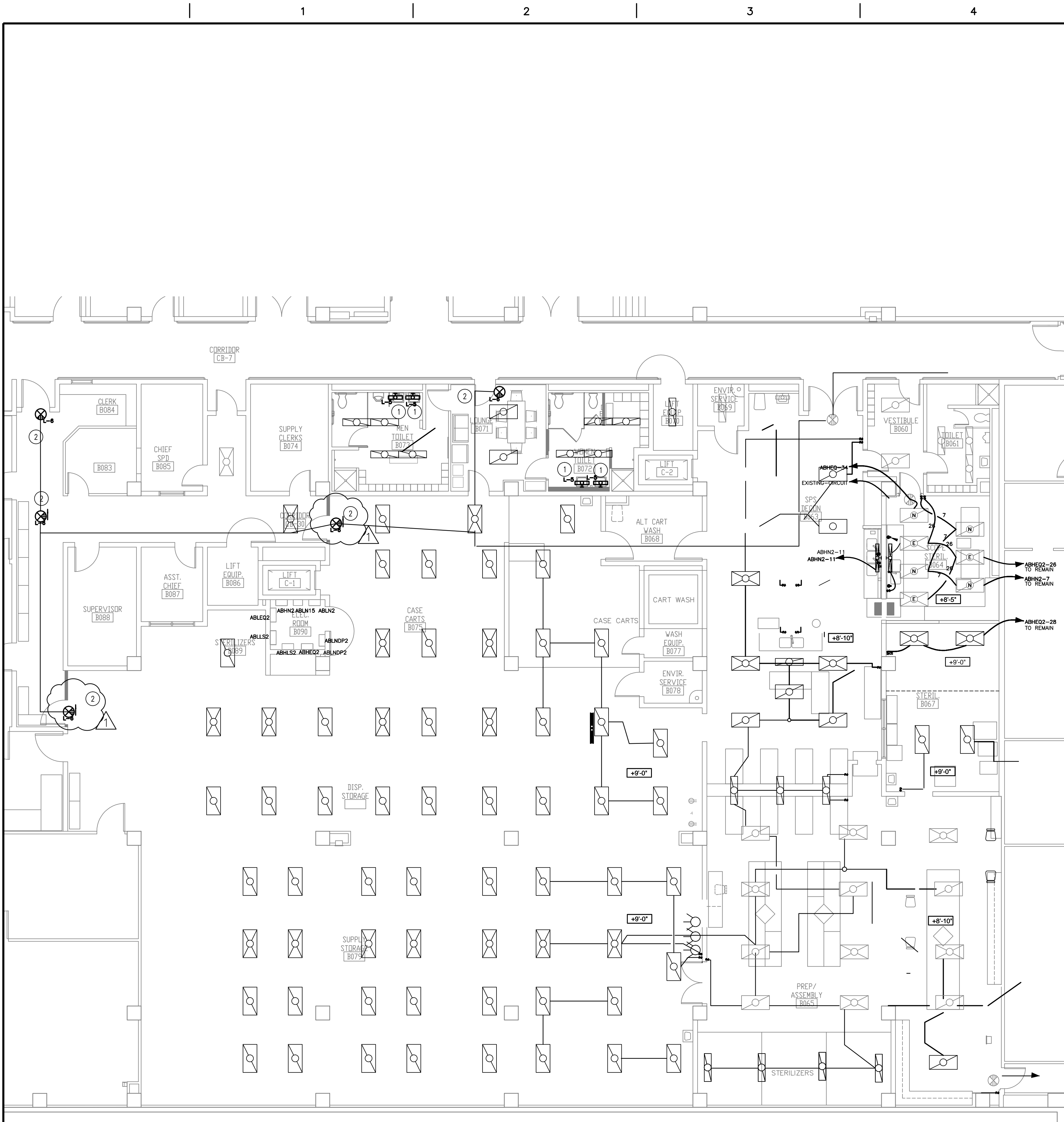
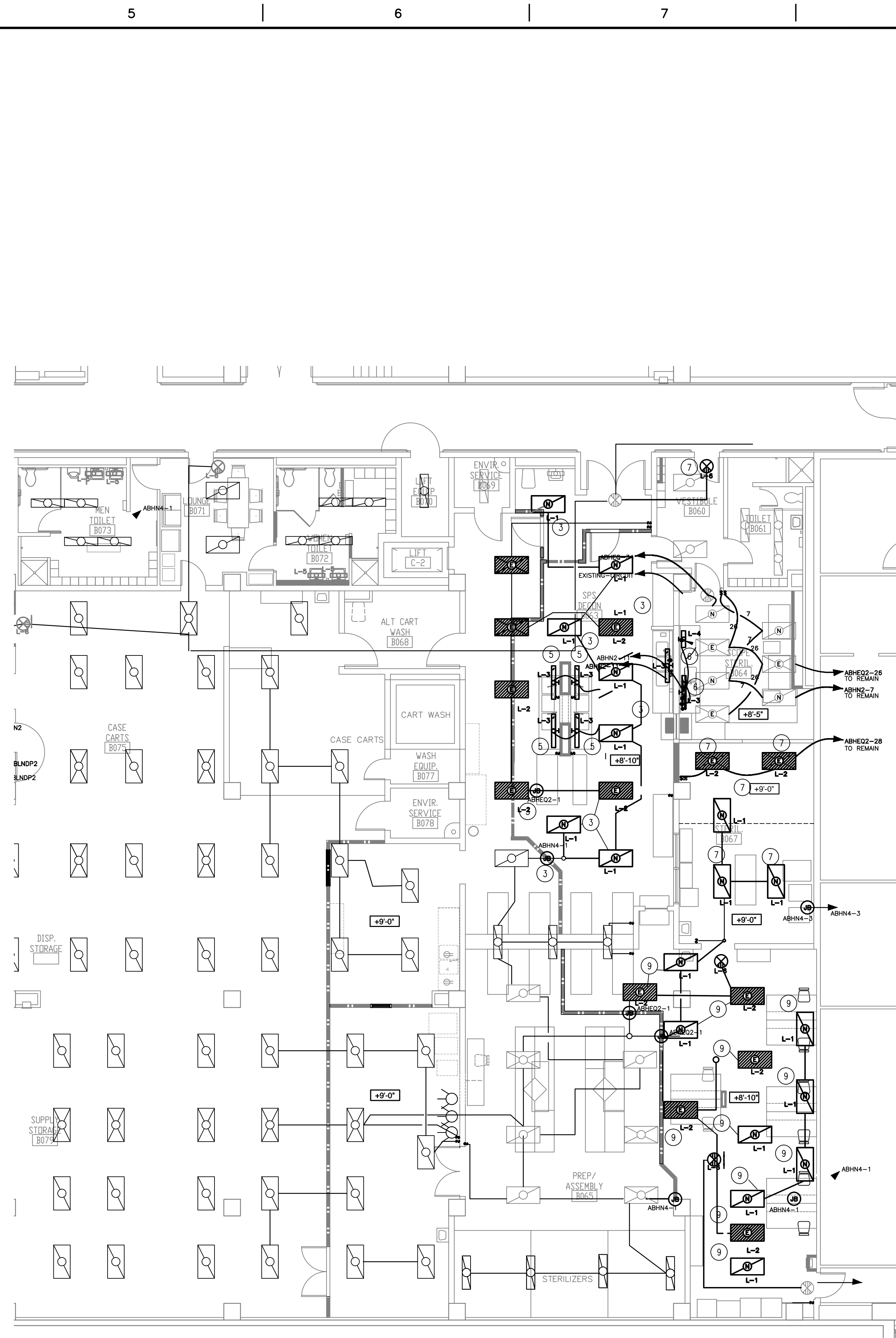


three inches = one foot
one and one half inches = one foot
one inch = one foot
three quarters inch = one foot
one half inch = one foot
three eighths inch = one foot
one quarter inch = one foot
one eighth inch = one foot



ELECTRICAL LIGHTING INSTALLATION
PHASING PLAN - PHASE 1
SCALE: 1/8" = 1'-0"



ELECTRICAL LIGHTING INSTALLATION
PHASING PLAN - PHASE 2
SCALE: 1/8" = 1'-0"



GENERAL NOTES

- SEE SHEET GI-004 FOR SYMBOLS, ABBREVIATIONS AND NOTES.
- SEE SHEET EL-101 FOR LIGHTING SCHEDULES
- JUNCTION BOXES SHALL BE LABELED WITH PANEL NAME AND CIRCUIT ON INSIDE OF BOX
- JUNCTION BOX COVERS SHALL BE LABELED WITH PANEL NAME AND CIRCUIT NUMBER

PLAN NOTES

PHASE 1 PLAN NOTES:

- MENS TOILET, LOUNGE AND WOMENS TOILET
INSTALL NEW WALL MOUNTED LIGHTS OVER NEW LOCATIONS OF SINKS.
- INSTALL NEW EXIT LIGHT IN LOUNGE

PHASE 2 PLAN NOTES:

DECONTAMINATION

- INSTALL NEW LIGHT FIXTURES IN AREA SHOWN. PRIOR TO RECONNECTING, DE-ENERGIZE CIRCUIT AND RECONNECT TO EXISTING CIRCUIT AT JUNCTION BOXES INSTALLED DURING DEMO.
- INSTALL NEW LIGHTING WALL FIXTURE NORTH WALL OF DECONTAMINATION
- INSTALL NEW LIGHTING AT CENTER WORKSTATIONS

SCOPE STERILIZATION ROOM, VESTIBULE TOILET

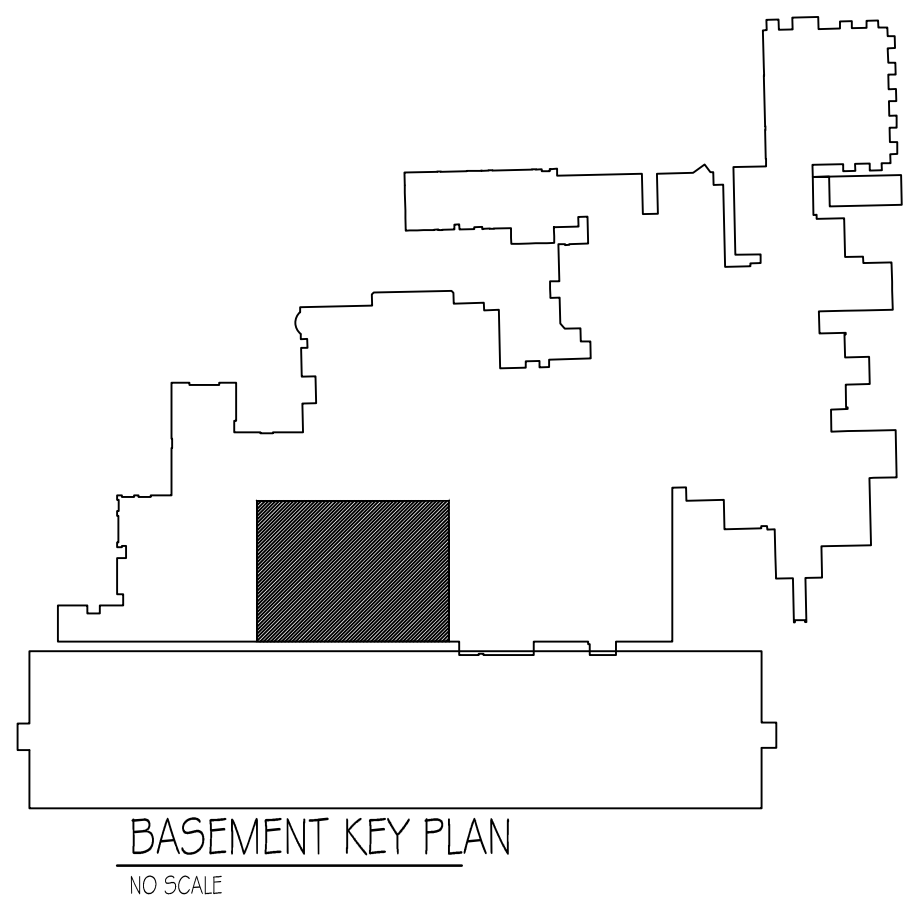
- INSTALL NEW LIGHT WALL FIXTURE SOUTH WALL OF SCOPE STERILIZATION
- INSTALL EXIT LIGHTS IN VESTIBULE

STERILIZATION ROOM

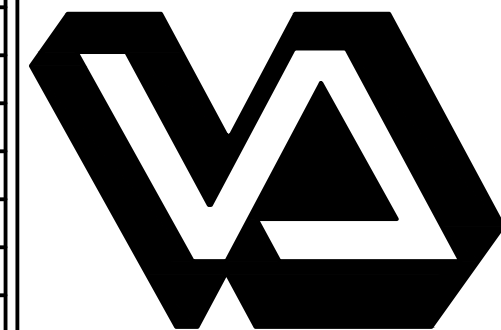
- INSTALL NEW LIGHT FIXTURES IN AREA SHOWN. PRIOR TO RECONNECTING, DE-ENERGIZE CIRCUIT AND RECONNECT TO EXISTING CIRCUIT AT JUNCTION BOXES INSTALLED DURING DEMO.

PREP AREA

- INSTALL NEW LIGHT FIXTURES IN AREA SHOWN. PRIOR TO RECONNECTING, DE-ENERGIZE CIRCUIT AND RECONNECT TO EXISTING CIRCUIT AT JUNCTION BOXES INSTALLED DURING DEMO.



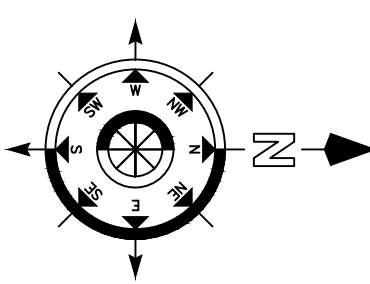
35% SD SUBMITTAL	1/11/2012
35% SD REVISION 1	1/18/2012
65% DD SUBMITTAL	1/22/2012
35% CD SUBMITTAL	01/30/2013
100% CD SUBMITTAL	02/27/2013
BIDDING DOCUMENTS	06/10/2013
AMENDMENT 2	8-2-2013
Revisions:	Date



Dept. of Veterans Affairs
Richard L. Roudebush
VA Medical Center
1481 W. 10th Street
Indianapolis, In 46202

CERTIFIED BY:

NORTH REFERENCE



ARCHITECT/ENGINEERS:

9245 Calumet Ave, Suite 205,
Munster, IN 46321
(219) 836-2120 Fax (219) 836-1129



Drawing Title
ELECTRICAL LIGHTING PLANS
PHASE 1 AND 2

PROJECT ENGINEER
John Fiwowski

SCALE

Approved Engineering Chief

Approved Service Chief

Project Title
RENOVATE SPS

Location
BASEMENT A-WING

Date
6/10/2013

Checked
JS

Drawn
DS

Project Number
583-12-107

Building Number
1

Drawing Number
EL100

3FY12
54 of 55

BIDDING DOCUMENTS
FULLY SPRINKLERED

Engineering
and Facilities
Management
Services

