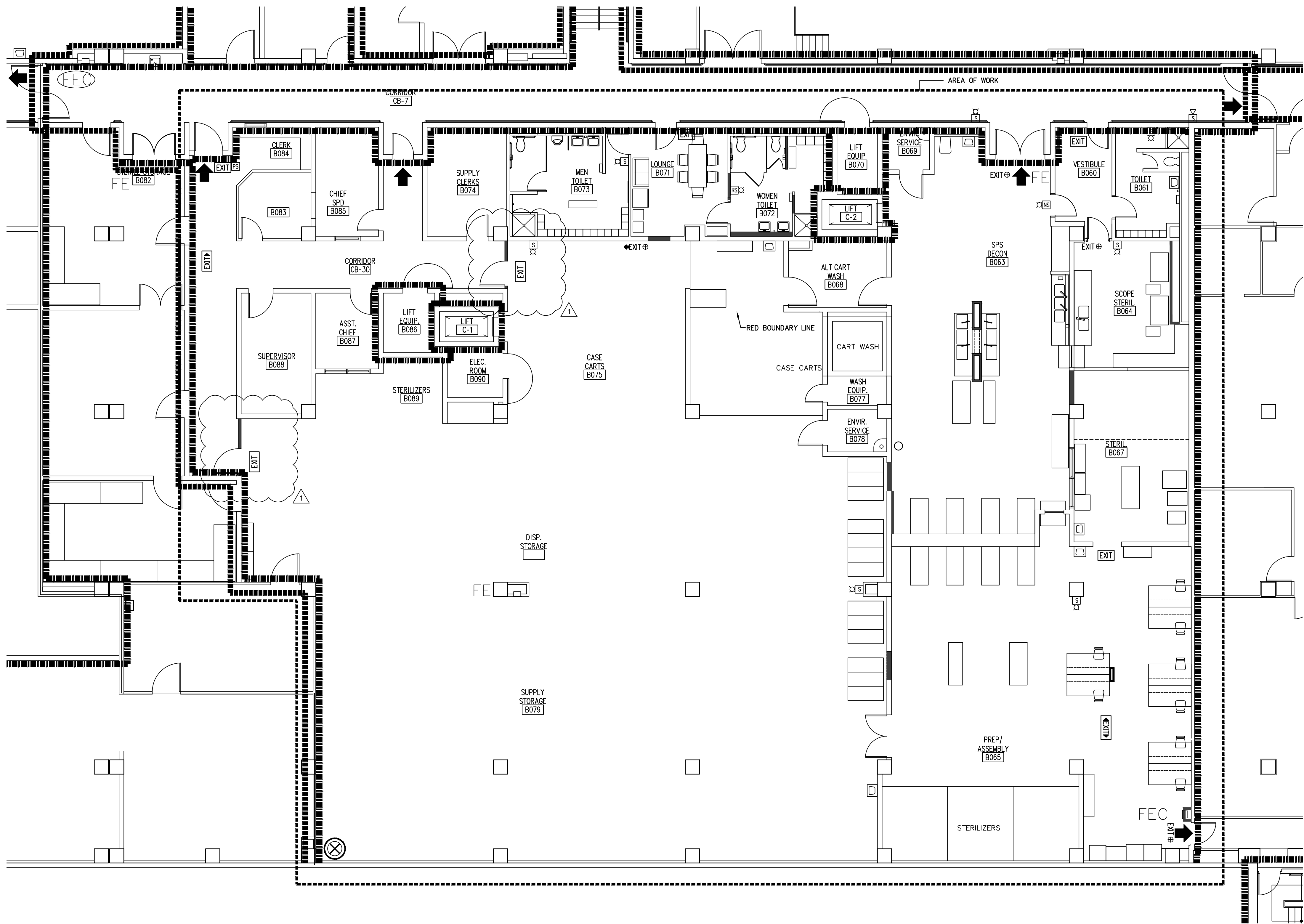


three inches = one foot
one and one half inches = one foot
one inch = one foot
three quarters inch = one foot
one half inch = one foot
three eighths inch = one foot
one quarter inch = one foot
one eighth inch = one foot

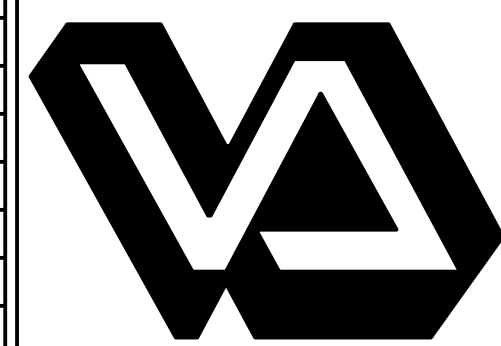


PARTIAL BASEMENT LIFE SAFETY PLAN
SCALE: 1/8" = 1'-0"

- SYMBOLS LIST**
- EXISTING 2 HOUR FIRE SEPARATION
 - EXISTING 1 HOUR FIRE SEPARATION
 - EXISTING SMOKE BARRIER
 - EVACUATION REMOTE POINT
 - EXISTING EXIT SIGN
 - NEW EXIT SIGN
 - NEW BI-DIRECTIONAL EXIT SIGN
 - EXIT
 - EXISTING FIRE EXTINGUISHER CABINET LOCATION
 - FE
 - FEC
 - EXISTING ADA HORN/STROBE
 - EXISTING STROBE
 - RELOCATED STROBE
 - NEW MANUAL PULL STATION
 - NEW STROBE

NOTE:
THE PROJECT SCOPE OF WORK IS WITHIN AN EXISTING SPACE. ALL CHANGES AS PART OF THIS PROJECT ARE CONTAINED WITHIN THE AREA OF WORK. NO CURRENT RENOVATIONS AS PART OF THIS PROJECT AFFECT THE EXISTING EXIT PATTERNS, FIRE SUPPRESSION SYSTEMS, OR OVERALL PATHS OF TRAVEL.

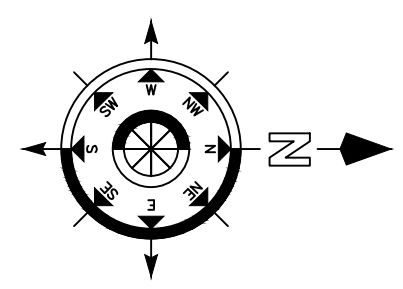
35% SD SUBMITTAL	11/14/2012
35% SD REVISION 1	11/26/2012
65% DD SUBMITTAL	12/20/2012
35% CD SUBMITTAL	01/30/2013
100% CD SUBMITTAL	02/27/2013
BIDDING DOCUMENTS	06/10/2013
AMENDMENT 2	06/07/2013
Revisions:	Date



Dept. of Veterans Affairs
Richard L. Roudebush
VA Medical Center
1481 W. 10th Street
Indianapolis, In 46202

CERTIFIED BY:

NORTH REFERENCE



ARCHITECT/ENGINEERS:



Drawing Title PARTIAL BASEMENT LIFE SAFETY PLAN - ALL PHASES	
PROJECT ENGINEER John Flaworski	Approved Engineering Chief
SCALE	Approved Service Chief

Project Title RENOVATE SPS	
Location BASEMENT A-WING	Date 6 / 10 / 2013
Checked FMF	Drawn VFS

Project Number 583-12-107
Building Number 1
Drawing Number LS-101
3FY12 4 of 55

BIDDING DOCUMENTS
FULLY SPRINKLERED

Engineering
and Facilities
Management
Services

Department of
Veterans Affairs