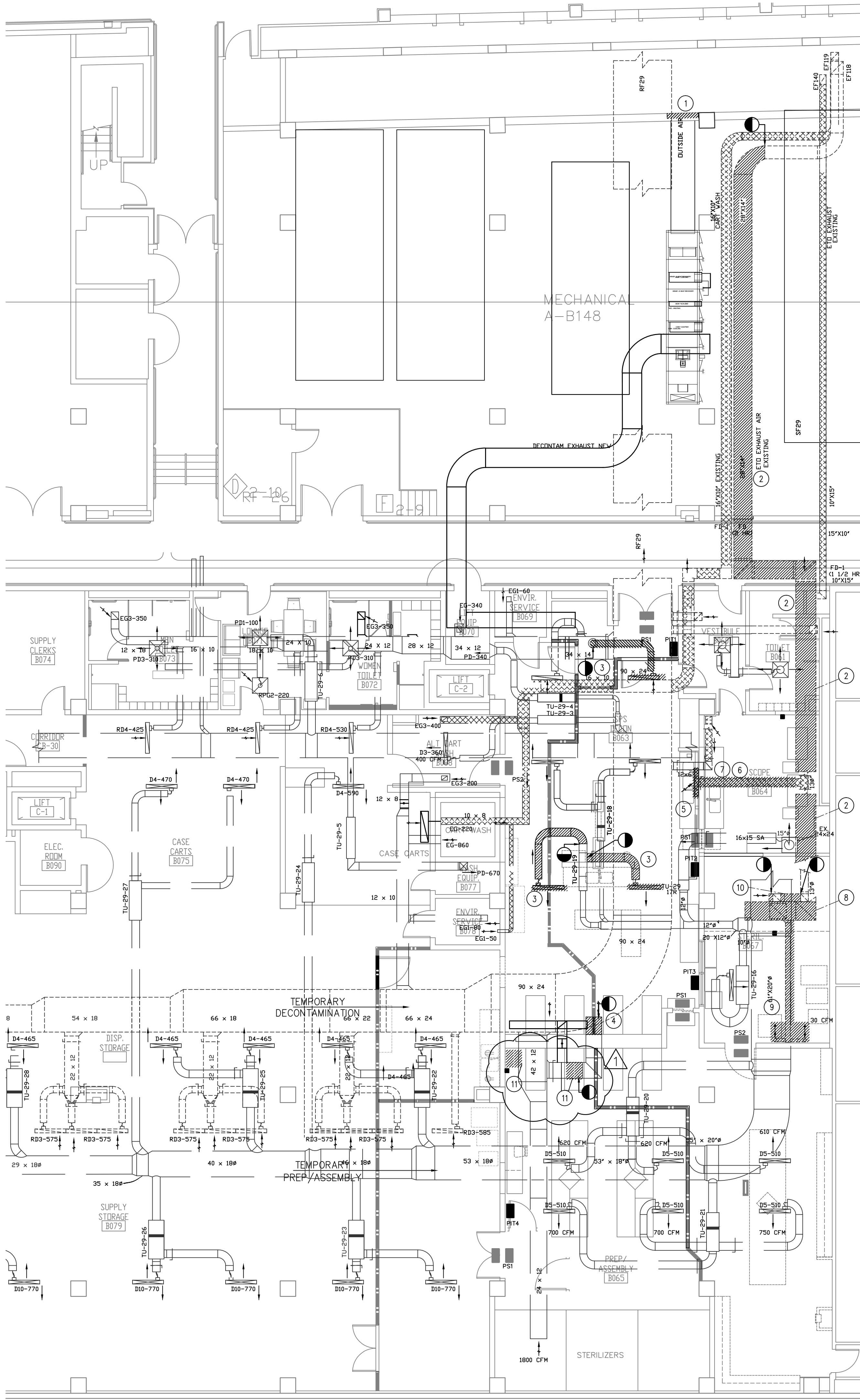


three inches = one foot
one and one half inches = one foot
one inch = one foot
three quarters inch = one foot
one half inch = one foot
one eighth inch = one foot
one quarter inch = one foot
one eighth inch = one foot
one eighth inch = one foot



MECHANICAL DEMOLITION PLAN PHASE 2 AND 3
SCALE: 1/8" = 1'-0"

- GENERAL DEMOLITION NOTES:**
1. VERIFY ALL EXISTING CONDITIONS PRIOR TO BEGINNING WORK. NOTIFY THE ARCHITECT OR VA COR OF CONFLICTS PRIOR TO PROCEEDING.
 2. ALL ITEMS BEING REMOVED SHALL REMAIN THE PROPERTY OF THE OWNER UNTIL CONFIRMATION HAS BEEN MADE AS TO WHETHER THE OWNER WILL RETAIN SUCH ITEMS. ALL ITEMS NOT BEING RETAINED BY THE OWNER OR DESIGNATED ON THE DRAWINGS TO BE RELOCATED OR REINSTALLED SHALL BE COMPLETELY REMOVED FROM THE SITE AND PROPERLY DISPOSED OF.
 3. THE DEMOLITION CONTRACTOR SHALL PROVIDE AND INSTALL TEMPORARY DUST PARTITIONS, TEMPORARY DOORS, WALK-OFF MATS AND EQUIPMENT PROTECTION WHERE SHOWN ON THE DOCUMENTS OR IMPLIED BY THE WORK BEING PERFORMED. SUCH PROTECTION SHALL BE MAINTAINED AND REPAIRED PROMPTLY IF DAMAGED TO AVOID DUST INFILTRATION INTO ADJACENT AREAS.
 4. ALL ATTEMPTS TO DEPICT CURRENT CONDITIONS AS SHOWN ON THE DRAWINGS WERE MADE TO BEST OF THE ARCHITECTS KNOWLEDGE OF EXISTING CONDITIONS AND OTHER RESOURCES SUCH AS SITE INVESTIGATIONS AND REVIEW OF PREVIOUS DRAWINGS.
 5. REFER TO ARCHITECTURAL, PLUMBING AND ELECTRICAL PLANS FOR RESPECTIVE DEMOLITION INFORMATION.
 6. ASSURE THAT NO MECHANICAL INTERRUPTIONS ARE MADE TO EXISTING EQUIPMENT IN THE PROJECT AREA.

DEMO PLAN NOTES

1. MECHANICAL ROOM AND OUTSIDE CORRIDOR
MAKE HOLE IN OPENING FOR INSTALLATION OF OUTSIDE AIR LOUVER
2. REMOVE EXISTING ETO EXHAUST AIR DUCT FROM MECHANICAL ROOM TO STERILIZATION ROOM
3. DECONTAMINATION ROOM
DEMO EXISTING SUPPLY AND EXHAUST DUCTWORK AS SHOWN AND RELOCATE AND REORIENT LINEAR DIFFUSERS/REGISTERS PER MH-101.
4. REMOVE EXHAUST GRILL AND CUT HOLE IN CEILING FOR LINEAR EXHAUST PLENUM AT WEST ROOM NEAR WASHERS
5. DEMO EXISTING HOOD ABOVE NORTH WASH STATION IN DECONTAMINATION ROOM
6. SCOPE STERILIZATION
DEMO DUCTWORK CONNECTION ABOVE SCOPE STERILIZATION ROOM TIED IN WITH STAINLESS STEEL ETO EXHAUST DUCT.
7. DEMO SOUTH WALL ABOVE CEILING FOR NEW SUPPLY AIR DUCT
8. REMOVE EXISTING ETO EXHAUST DUCT
9. DEMO EXISTING ETO STERILIZERS EXHAUST IN CEILING.
10. DEMO DUCTWORK AND RELOCATE EXHAUST GRILL TO NEW CEILING ELEVATION
11. PREP ASSEMBLY - PHASE 3
PREPARE DUCTWORK AND CEILING FOR NEW EXHAUST GRILL INSTALLATION - SEE MH101

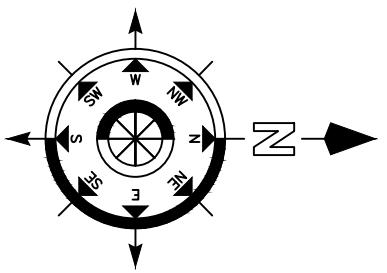
35% SD SUBMITTAL	1/11/4/2012
35% SD REVISION 1	1/11/8/2012
65% DD SUBMITTAL	1/22/2012
35% CD SUBMITTAL	01/30/2013
100% CD SUBMITTAL	02/27/2013
BIDDING DOCUMENTS	06/10/2013
AMENDMENT 2	8-2-2013
Revisions:	Date



Dept. of Veterans Affairs
Richard L. Roudebush
VA Medical Center
1481 W. 10th Street
Indianapolis, IN 46202

CERTIFIED BY:

NORTH REFERENCE



ARCHITECT/ENGINEERS:

9245 Calumet Ave., Suite 205,
Munster, IN 46321
(219) 836-2120 Fax (219) 836-1129



Drawing Title
**MECHANICAL DEMOLITION FLOOR AND NOTES
PHASE 2**

PROJECT ENGINEER
John Flwowski

SCALE

Approved Engineering Chief

Approved Service Chief

Project Title
RENOVATE SPS

Location
BASEMENT A-WING

Date
6/10/2013

Checked
DR

Drawn
DS

Project Number
583-12-107
Building Number
1

Drawing Number
MD101
3FY12
28 of 55

BIDDING DOCUMENTS
FULLY SPRINKLERED

Engineering
and Facilities
Management
Services

