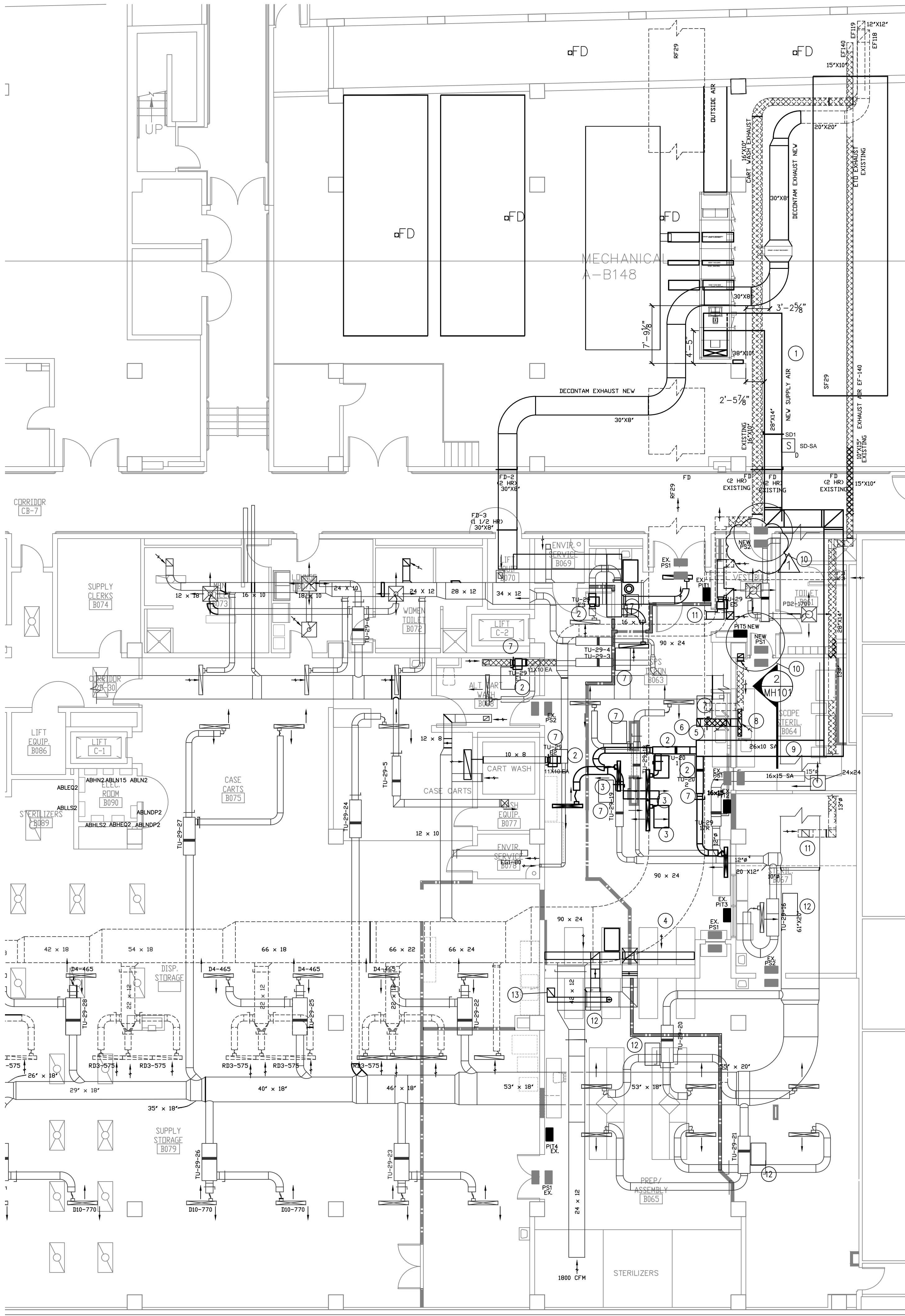
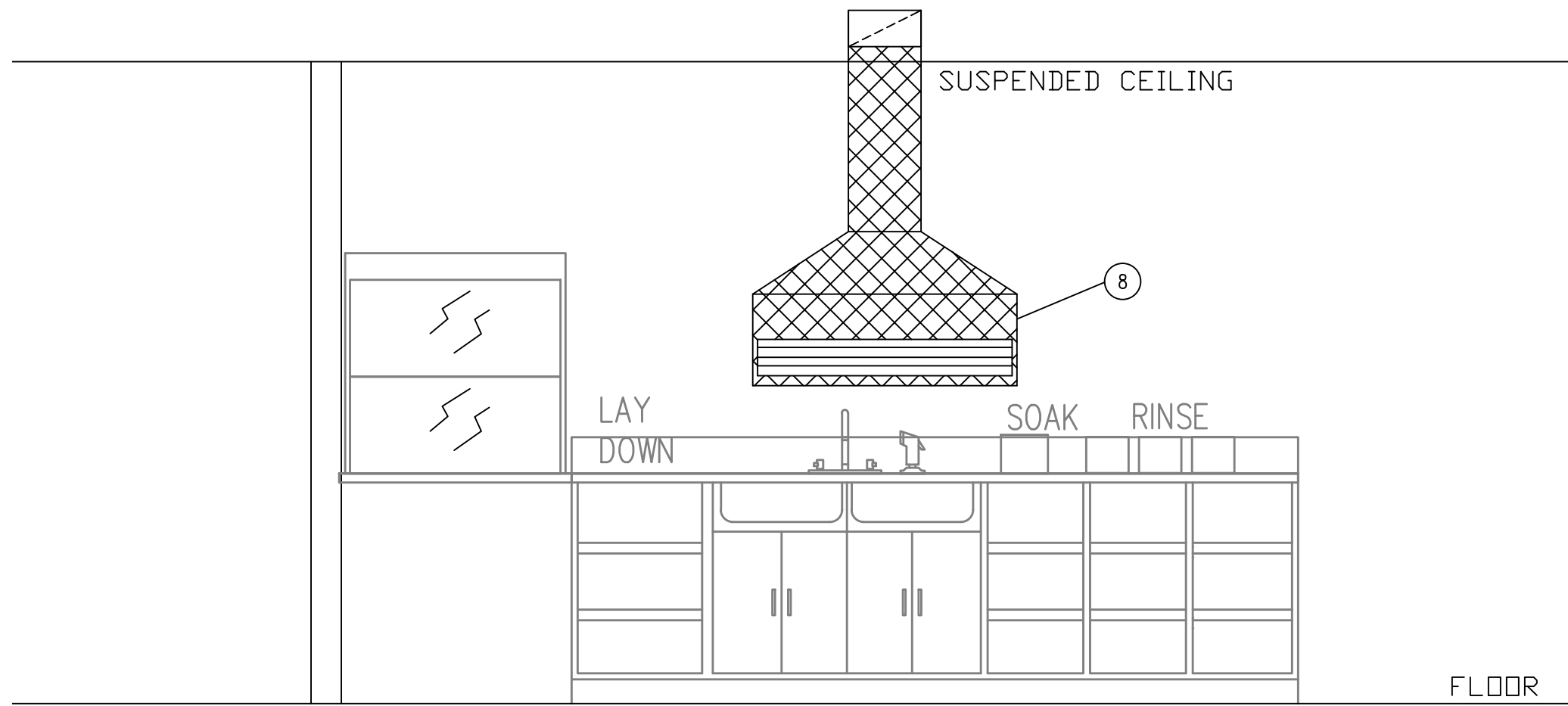


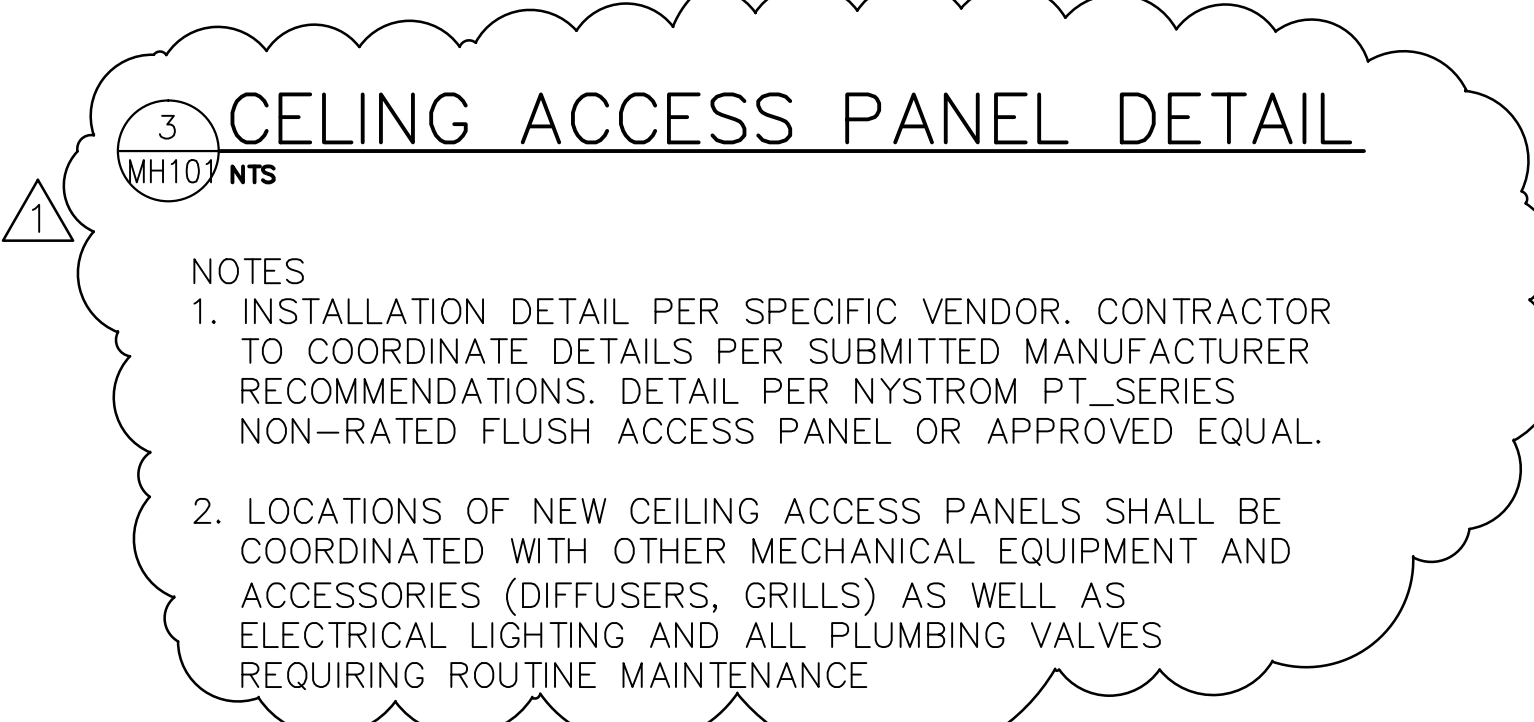
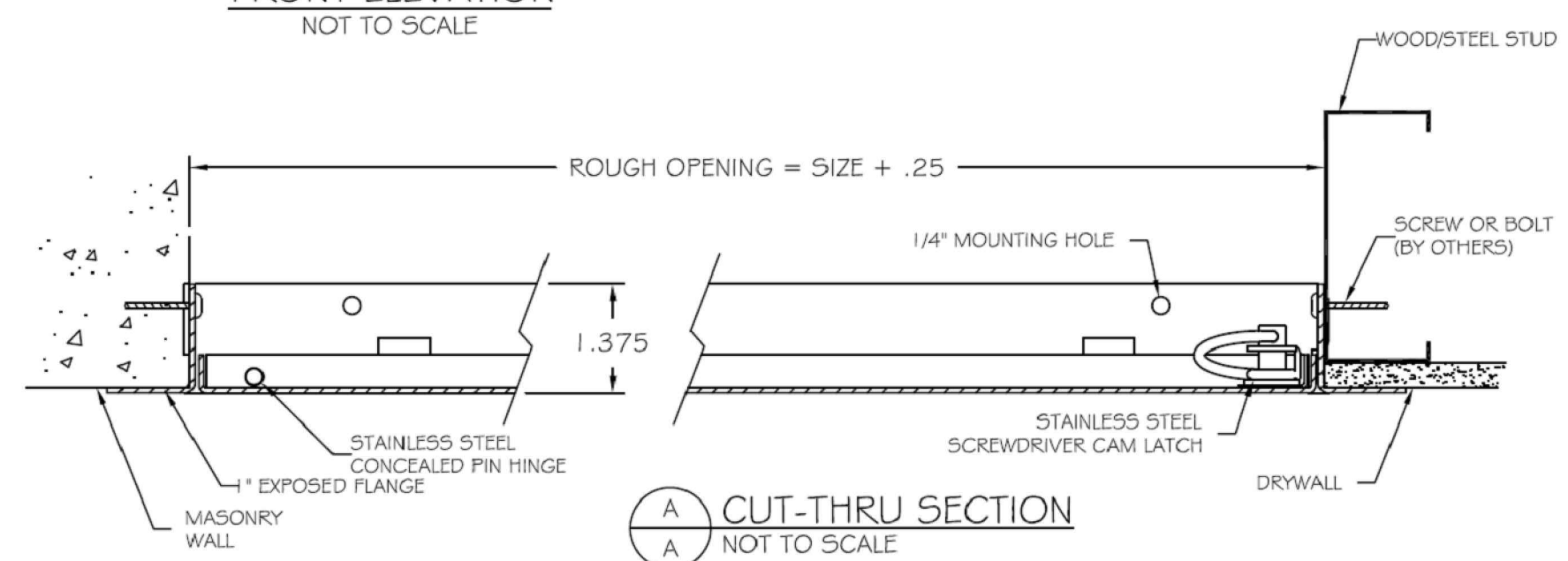
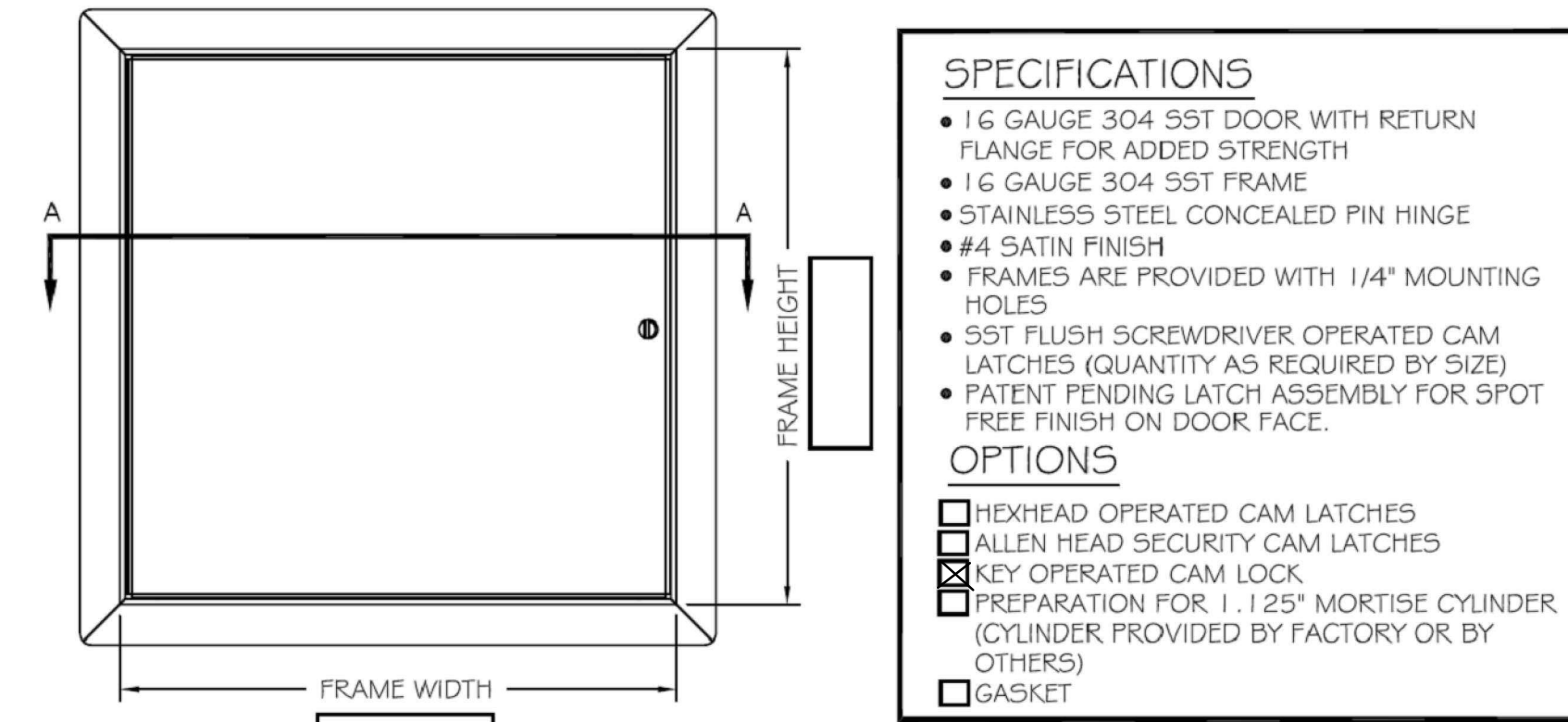
three inches = one foot
one and one half inches = one foot
one inch = one foot
three quarters inch = one foot
one half inch = one foot
three eighths inch = one foot
one quarter inch = one foot
one eighth inch = one foot



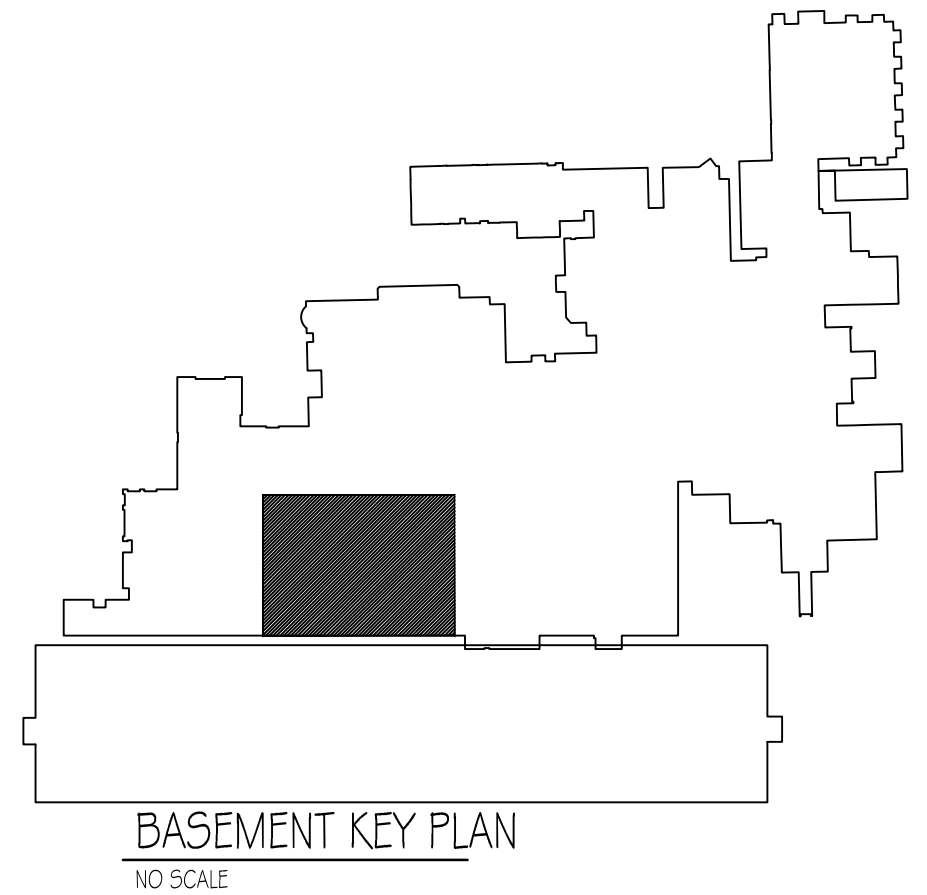
MECHANICAL INSTALLATION
PHASING PLAN - PHASE 2
SCALE: 1/8" = 1'-0"



HOOD INSTALLATION
LOOKING SOUTH
SCALE: 1/2" = 1'-0"



NOTES
1. INSTALLATION DETAIL PER SPECIFIC VENDOR. CONTRACTOR TO COORDINATE DETAILS PER SUBMITTED MANUFACTURER RECOMMENDATIONS. DETAIL PER NYSTROM PT-SERIES NON-RATED FLUSH ACCESS PANEL OR APPROVED EQUAL.
2. LOCATIONS OF NEW CEILING ACCESS PANELS SHALL BE COORDINATED WITH OTHER MECHANICAL EQUIPMENT AND ACCESSORIES (DIFFUSERS, GRILLS) AS WELL AS ELECTRICAL LIGHTING AND ALL PLUMBING VALVES REQUIRING ROUTINE MAINTENANCE



PLAN NOTES

- MECHANICAL ROOM AND OUTSIDE CORRIDOR
INSTALL NEW SUPPLY AIR DUCTWORK AND TIE IN TO AHU-20
INSTALL SMOKE DAMPER AND DUCT SMOKE DETECTOR PER FIRE ALARM REQUIREMENTS.
- DECONTAMINATION ROOM
INSTALL AND SUPPORT NEW SUPPLY AND EXHAUST TERMINAL UNITS ABOVE CEILING IN AREA INDICATED.
- INSTALL NEW SUPPLY LINEAR DIFFUSERS 63-S5, S6 AND S7 AS SHOWN. WORK THIS DRAWING WITH MH-402 AND 403.
- INSTALL EXHAUST GRILL 63-E4 WITH VOLUME DAMPER VD-2 IN LOCATION INDICATED FOR LINEAR EXHAUST PLENUM WEST ROOM NEAR WASHERS
- INSTALL NEW EXHAUST GRILL 63-E6 IN CEILING ABOVE NORTH WASH STATION IN LOCATION OF PREVIOUSLY REMOVED HOOD DECONTAMINATION ROOM.
- INSTALL NEW DUCTWORK FROM GRILL AND CONNECT TO EXISTING 90 X 24 DUCTWORK.
- INSTALL NEW CEILING ACCESS PANELS 36" X 24" - SEE DETAIL 3 THIS DWG.
- SCOPE STERILIZATION AND VESTIBULE
INSTALL NEW EXHAUST GRILLS 60-E2 AND TIE TO EXISTING DUCTWORK. INSTALL HOOD AND GRILL 64-E2 WITH VOLUME DAMPER VD-3 AND CONNECT INTO NEW DUCTWORK IN DECONTAMINATION.
- INSTALL NEW SUPPLY AIR DUCT
- INSTALL NEW TSI MONITOR AND PRESSURE SWITCHES - TIE INTO EXISTING CONTROL NETWORK.
- STERILIZATION
- RELOCATE EXHAUST DIFFUSER FOR NEW CEILING INSTALLATION. SEE MD101
- PREP ASSEMBLY
- INSTALL NEW CEILING ACCESS PANELS 36" X 24" - SEE DETAIL 3 THIS DWG.
- INSTALL NEW EXHAUST GRILL 65-E1 WITH VOLUME DAMPER VD-4 IN CEILING ABOVE WASHER WHERE SHOWN.

<div>35% SD SUBMITTAL 1/11/4/2012</div> <div>35% SD REVISION 1 1/12/2012</div> <div>65% DD SUBMITTAL 12/20/2012</div> <div>35% CD SUBMITTAL 01/30/2013</div> <div>100% CD SUBMITTAL 02/27/2013</div> <div>BIDDING DOCUMENTS 06/10/2013</div> <div>AMENDMENT 2 8-2-2013</div> <div>Revisions: Date</div>	<div></div> <div>Dept. of Veterans Affairs Richard L. Roudebush VA Medical Center 1481 W. 10th Street Indianapolis, IN 46202</div>	CERTIFIED BY:	NORTH REFERENCE 	ARCHITECT/ENGINEERS: <div></div> <div>9245 Calumet Ave., Suite 205, Munster, IN 46321 (219) 836-2120 Fax (219) 836-1129</div>	<div>Drawing Title MECHANICAL HVAC SUPPLY AND EXHAUST FLOOR PHASE 2 -PLAN AND NOTES</div> <div>PROJECT ENGINEER John Fiwowarski</div> <div>SCALE</div>	<div>Approved Engineering Chief</div> <div>Approved Service Chief</div>	<div>Project Title RENOVATE SPS</div> <div>Location BASEMENT A-WING</div> <div>Date 6/10/2013</div> <div>Checked AMH</div> <div>Drawn DS</div>	<div>Project Number 583-12-107</div> <div>Building Number 1</div> <div>Drawing Number MH101</div> <div>3FY12</div> <div>30 of 55</div>	<div>Engineering and Facilities Management Services</div> <div> Department of Veterans Affairs</div>
---	--	---------------	---------------------	--	--	---	--	--	--