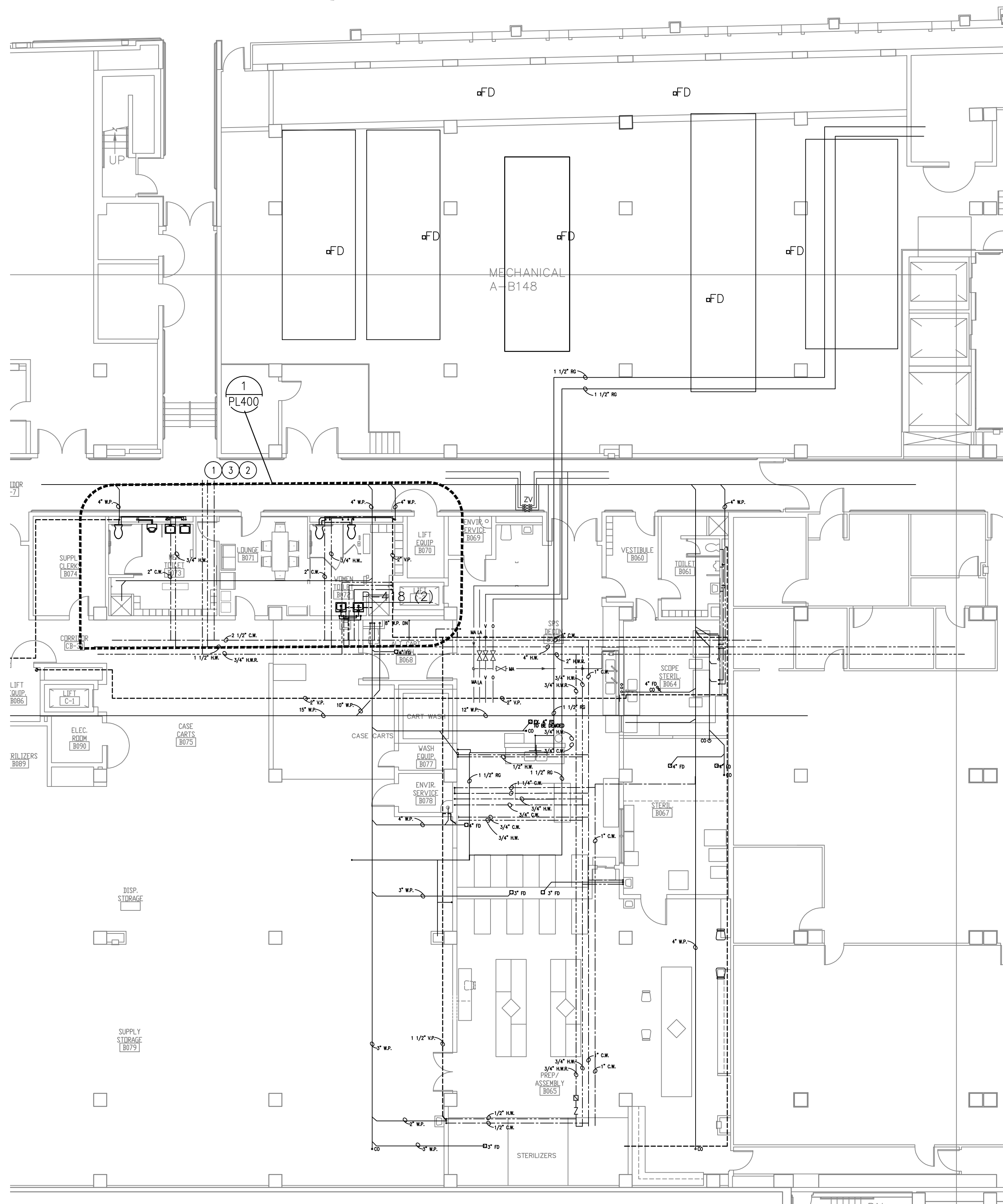
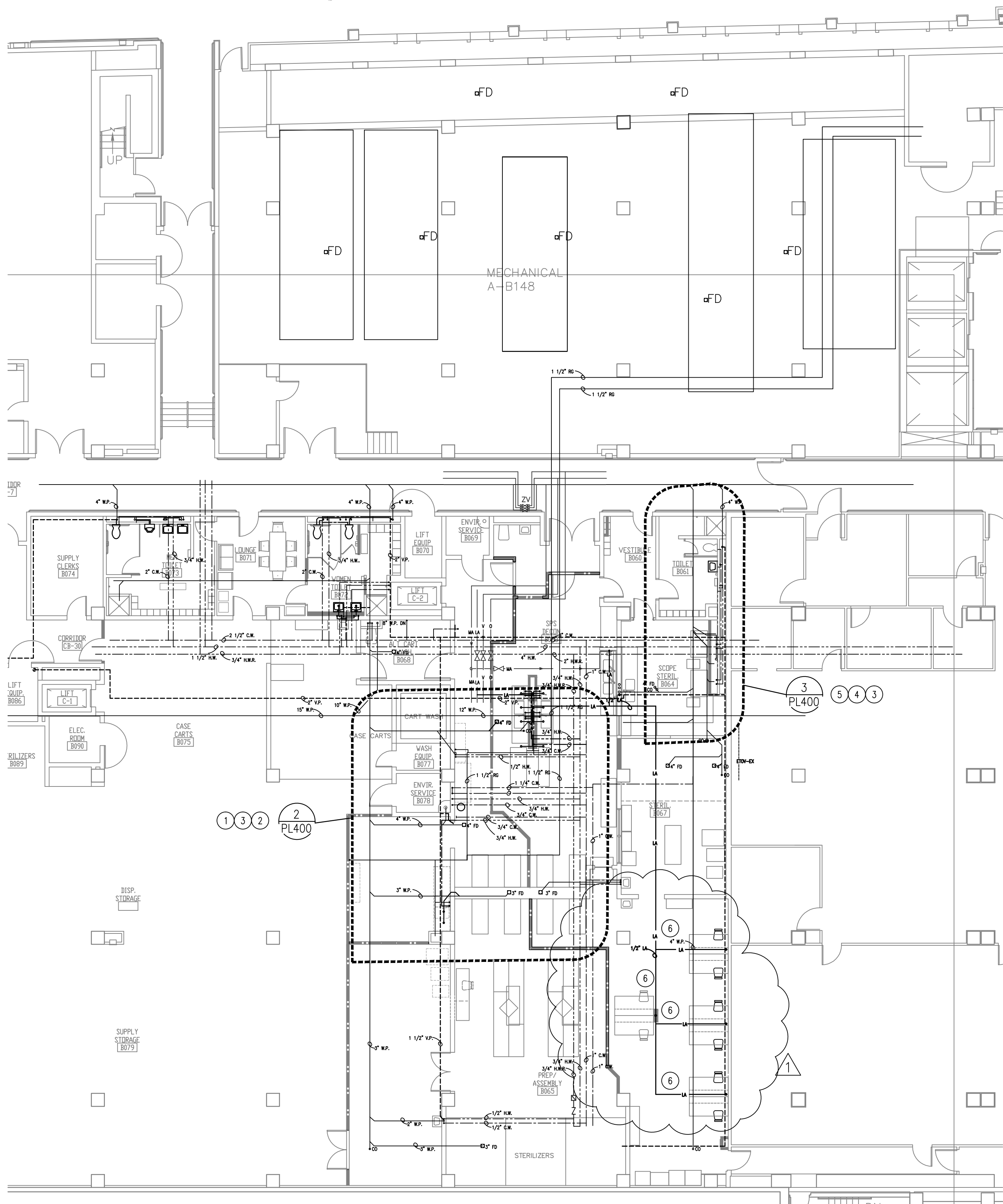


three inches = one foot  
one and one half inches = one foot  
one inch = one foot  
three quarters inch = one foot  
one half inch = one foot  
three eighths inch = one foot  
one eighth inch = one foot  
one quarter inch = one foot  
one eighth inch = one foot  
one eighth inch = one foot



PLUMBING INSTALLATION  
PHASING PLAN - PHASE 1  
SCALE: 3/32" = 1'-0"



PLUMBING INSTALLATION  
PHASING PLAN - PHASE 2  
SCALE: 3/32" = 1'-0"

- GENERAL NOTES:
- DRAWING SHOWN REPRESENTING KNOWN CONDITIONS BASED ON EXISTING REFERENCE DRAWINGS AND OTHER ONGOING PROJECTS RELATED TO DOMESTIC WATER. CONTRACTOR TO VERIFY EXISTING CONDITIONS AND COORDINATE WORK WITH OTHER KNOWN OR UNKNOWN RISER RENOVATION PROJECTS
  - ANY SITE MODIFICATION NOT SHOWN ON DRAWINGS SHALL BE MARKED-UP ON AN EXISTING DRAWING. CONTRACTOR SHALL SUBMIT A MARKED UP SET TO THE VA COR FOR AS-BUILT PURPOSES AT THE CONCLUSION OF THE PROJECT.
  - PLUG, FULLY CLOSE AND REMOVE HANDLE FROM ALL UNUSED MEDICAL GAS VALVES.
  - FOR SYMBOLS AND ABBREVIATIONS SEE DRAWING G1004
  - SEE DRAWING PL-500 FOR DETAILS AND EQUIPMENT SCHEDULES.

- PLAN NOTES:
- SEE DRAWING PD-100 FOR DEMOLITION OF FIXTURES AND PIPING WORK
  - CONNECT 1/2" DOMESTIC COLD WATER, HOT WATER PIPING TO SINKS SHOWN ON PLAN.
  - RE-CONNECT SANITARY SEWER, (S.S.) AND VENT PIPING (V.P.)
  - CONNECT 3/4" CW AND HW WITH RELOCATED MIXING VALVE FOR MEDIVATOR UNIT
  - CONNECT C.W. AND H.W. IN SCOPE STERILIZATION ROOM. TMV TO REMAIN ACCESSIBLE.
  - CONNECT LABORATORY AIR FOR NEW WORK STATIONS IN PREP ASSEMBLY ROOM

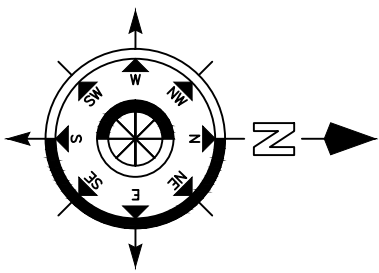
35% SD SUBMITTAL	1/11/2012
35% SD REVISION 1	1/18/2012
65% DD SUBMITTAL	1/23/2012
35% CD SUBMITTAL	01/30/2013
100% CD SUBMITTAL	02/27/2013
BIDDING DOCUMENTS	06/10/2013
AMENDMENT 2	8-2-2013
Revisions:	Date



Dept. of Veterans Affairs  
Richard L. Roudebush  
VA Medical Center  
1481 W. 10th Street  
Indianapolis, IN 46202

CERTIFIED BY:

NORTH REFERENCE



ARCHITECT/ENGINEERS:

9245 Calumet Ave., Suite 205,  
Munster, IN 46321  
(219) 836-2120 Fax (219) 836-1129



Drawing Title  
PLUMBING AND MEDICAL GAS PHASE 1 AND 2  
PLANS AND NOTES

PROJECT ENGINEER  
John Flaworski

Approved Engineering Chief

SCALE

Approved Service Chief

Project Title  
RENOVATE SPS

Location  
BASEMENT A-WING

Date  
6/10/2013

Checked

Drawn

Project Number  
583-12-107  
Building Number  
1  
Drawing Number  
PL-100  
3FY12  
24 of 55

BIDDING DOCUMENTS  
FULLY SPRINKLERED

Engineering  
and Facilities  
Management  
Services

Department of  
Veterans Affairs