

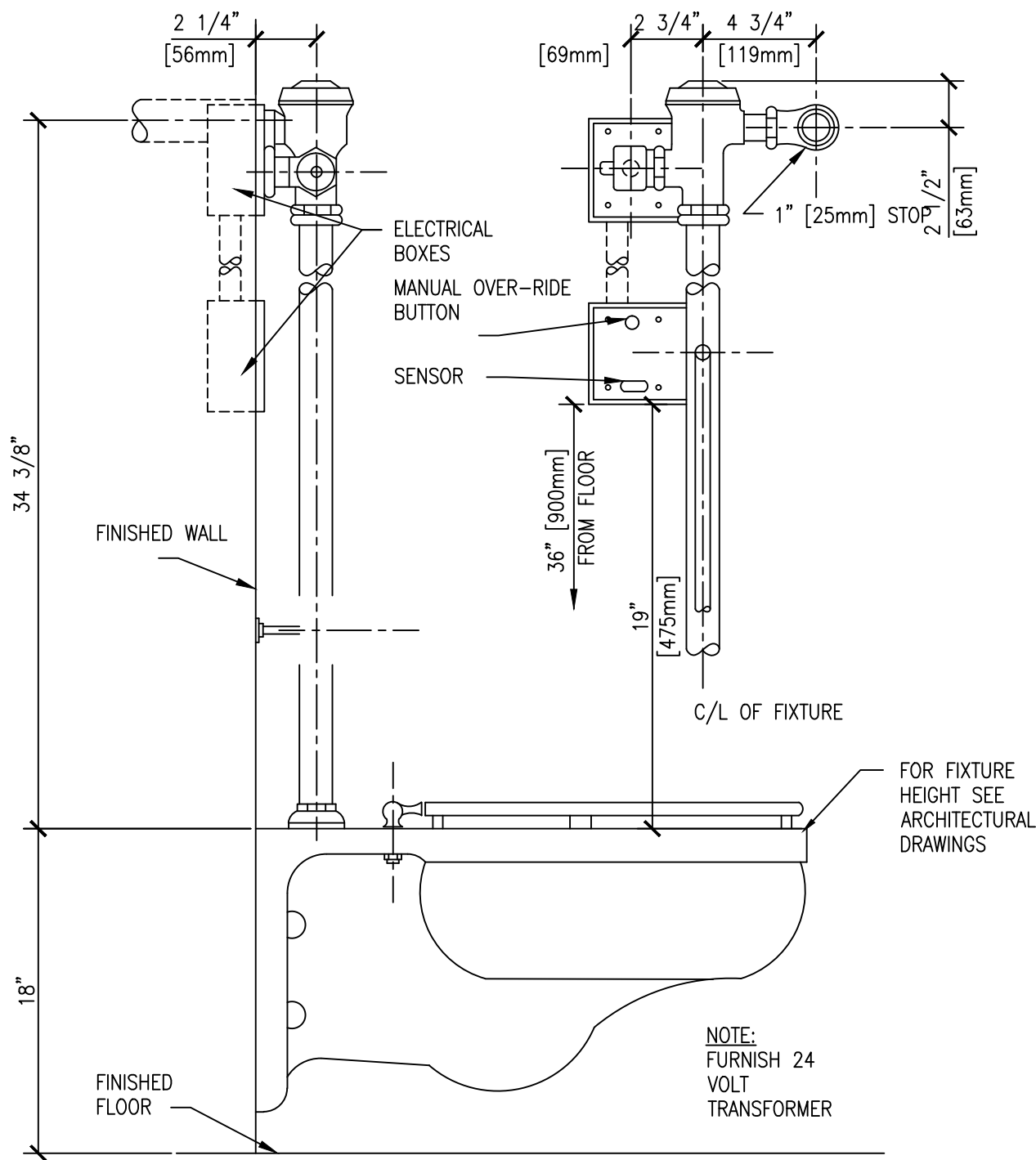
three inches = one foot  
one and one half inches = one foot  
one inch = one foot  
three quarters inch = one foot  
three eighths inch = one foot  
one quarter inch = one foot  
one eighth inch = one foot

PLUMBING AND FIXTURE SCHEDULES

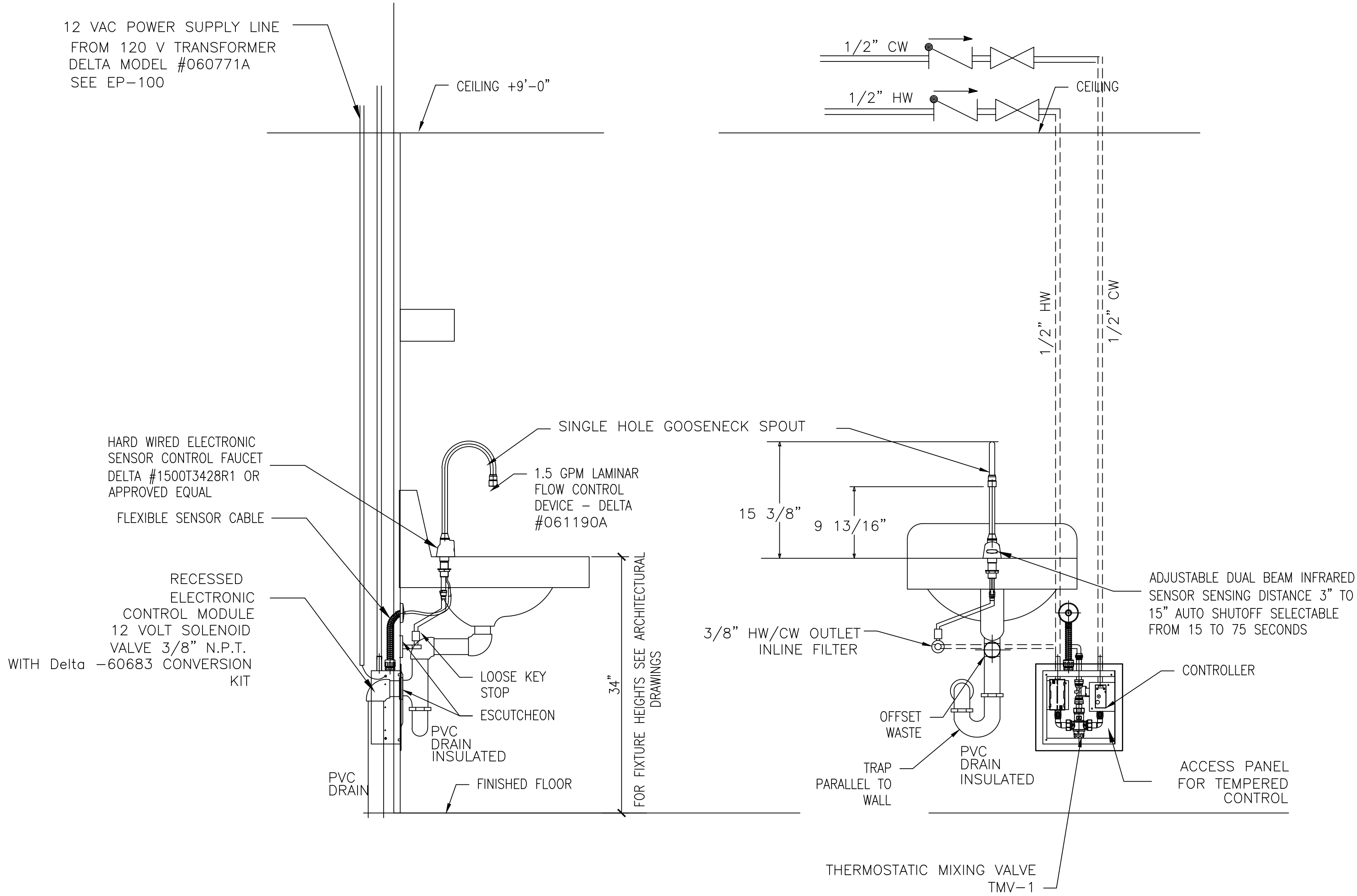
Room No.	Functional Area	Fixture, spec 22 40 00												Plumbing and Sanitary Drain Systems			
		P-number	QTY	P-number	QTY	P-number	QTY	P-number	QTY	P-number	QTY	P-number	QTY	hot water (in)	cold water (in.)	sanitary drain (in.)	vent (in.)
B073	Mens Toilet	103	1	-	-	-	-	-	-	-	-	-	-	-	1.25	4	2
		-	-	418	2	-	-	-	-	-	-	-	-	0.5	0.5	1.5	1.5
		-	-	-	-	201	1	-	-	-	-	-	-	-	0.75	2	1.5
B071	Lounge	-	-	-	-	-	-	-	-	-	-	-	-	-	-	-	-
B072	Womens Toilet	103	2	-	-	-	-	-	-	-	-	-	-	-	1.25	4	2
		-	-	418	2	-	-	-	-	-	-	-	-	0.5	0.5	1.5	1.5
B069	Envir Service	-	-	-	-	-	-	-	-	EX-SINK	1	-	-	-	-	-	-
B061	Unisex Toilet	-	-	-	-	-	-	-	-	EX-SINK	1	-	-	-	-	-	-
		-	-	-	-	-	-	-	-	EX-TOILET	1	-	-	-	-	-	-
B067	Sterilization	-	-	-	-	-	-	-	-	EX SINK	1	-	-	-	-	-	-
B063	SPS Decon	-	-	-	-	-	-	707	1	EX-SINK	1	P-1	2	-	1.5	1.5	1.5
#	TEMP DECON	-	-	-	-	-	-	707	1					-	1.5	1.5	1.5
B064	Scope Sterilization	-	-	-	-	-	-	-	-	EX WORKS TATI ONS	-	-	-	-	-	-	-
B065	Prep/Assembly	-	-	-	-	-	-	-	-	EX SINK	1	-	-	-	-	-	-
B077	Wash Equip and automatic cart wash	-	-	-	-	-	-	-	-	-	-	-	-	-	-	-	-
B078	Envir Service	-	-	-	-	-	-	-	-	EX SINK	1	-	-	-	-	-	-
B075	Case Carts Area 1	-	-	-	-	-	-	-	-	EX- SINK	1	-	-	-	-	-	-
B075	Case Carts Area 2	-	-	-	-	-	-	-	-	-	-	-	-	-	-	-	-
B079	Supply Storage	-	-	-	-	-	-	-	-	EX- SINK	1	-	-	-	-	-	-
	Total	103	3	418	4	201	1	707	2	EX	9	P-1	2				

Fixture		
P-number	Description	Remarks
103	water closet, wall hung, wheel chair height, electronic flushing valve	per detail 2/PL-500 and specifications
418	lavatory, wall hung, sensor controlled faucet	per detail 1/PL-500 and specifications
201	Urinal, electronic flushing valve	per architectural details and specifications
707	Emergency shower, eye and face wash	
P-1	Stainless steel sink, adjustable height legs, with gooseneck faucet wrist control and spray arm	See architectural equipment schedule item E005. To be provided by VA, installed by contractor
EX	All existing shown on the drawing to stay	per architectural and plumbing plans

THERMOSTATIC MIXING VALVE											
Reference Drawings PL-100 AND PL-400											
Valve Mark #	Qty.	Size	Service	Type	OPERATING TEMPERATURE	OPERATING PRESSURE AND FLOW RATE	Connection	Body Material	Seats/Seals	FINISH	OPTIONS
TMV-1	4	1/2" INLET	CW,HW	TMV Valve - CHECK VALVE BACK FLOW AND S.S. INTERNAL STRAINER	95°F TO 115°F CW, 39°F TO 80°F HW, 120°F TO 195°F	20 PSI MIN 80 PSI MAX @ 11 GPM OPERATING 125 PSI MAX	1/2" COPPER SWEAT	BRASS	VANDAL RESISTANT CAP	--	OUTLET FLOW REDUCES TO TRICKLE ON COLD WATER FAILURE
Preferred Vendor					DELTA Model No. 061134A Or Approved Equal						



P-103 WALL HUNG WATER CLOSET - SENSOR ROUGH-IN DETAIL  
SCALE: NTS (3 PLS.)  
REFERENCE PL-100 AND ARCHITECTURAL DRAWINGS



P-418 LAVATORY SENSOR OPERATED SINK ROUGH-IN DETAIL  
SCALE: NTS (4 PLS.)  
REFERENCE PL-100 AND ARCHITECTURAL DRAWINGS

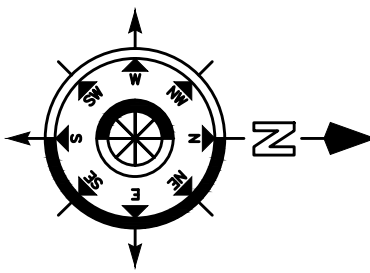
35% SD SUBMITTAL	1/11/4/2012
35% SD REVISION 1	1/1/26/2012
65% CD SUBMITTAL	1/2/20/2012
35% CD SUBMITTAL	0/1/30/2013
100% CD SUBMITTAL	02/27/2013
BIDDING DOCUMENTS	06/10/2013
AMENDMENT 2	8-2-2013
Revisions:	Date



Dept. of Veterans Affairs  
Richard L. Roudebush  
VA Medical Center  
1481 W. 10th Street  
Indianapolis, In 46202

CERTIFIED BY:

NORTH REFERENCE



ARCHITECT/ENGINEERS:

9245 Calumet Ave, Suite 205,  
Munster, IN 46321  
(219) 836-2120 Fax (219) 836-1129



Drawing Title PLUMBING DETAILS AND SCHEDULES		Project Title RENOVATE SPS	
PROJECT ENGINEER John Flwowski	Approved Engineering Chief	Location BASEMENT A-WING	Project Number 583-12-107
SCALE	Approved Service Chief	Date 6/10/2013	Building Number 1
		Checked DS	Drawing Number FL-500
		Drawn DR	3FY12
			26 of 55

Project Number 583-12-107		Building Number 1	
Drawing Number FL-500		3FY12	
26 of 55			

BIDDING DOCUMENTS  
FULLY SPRINKLERED

Engineering  
and Facilities  
Management  
Services

Department of  
Veterans Affairs