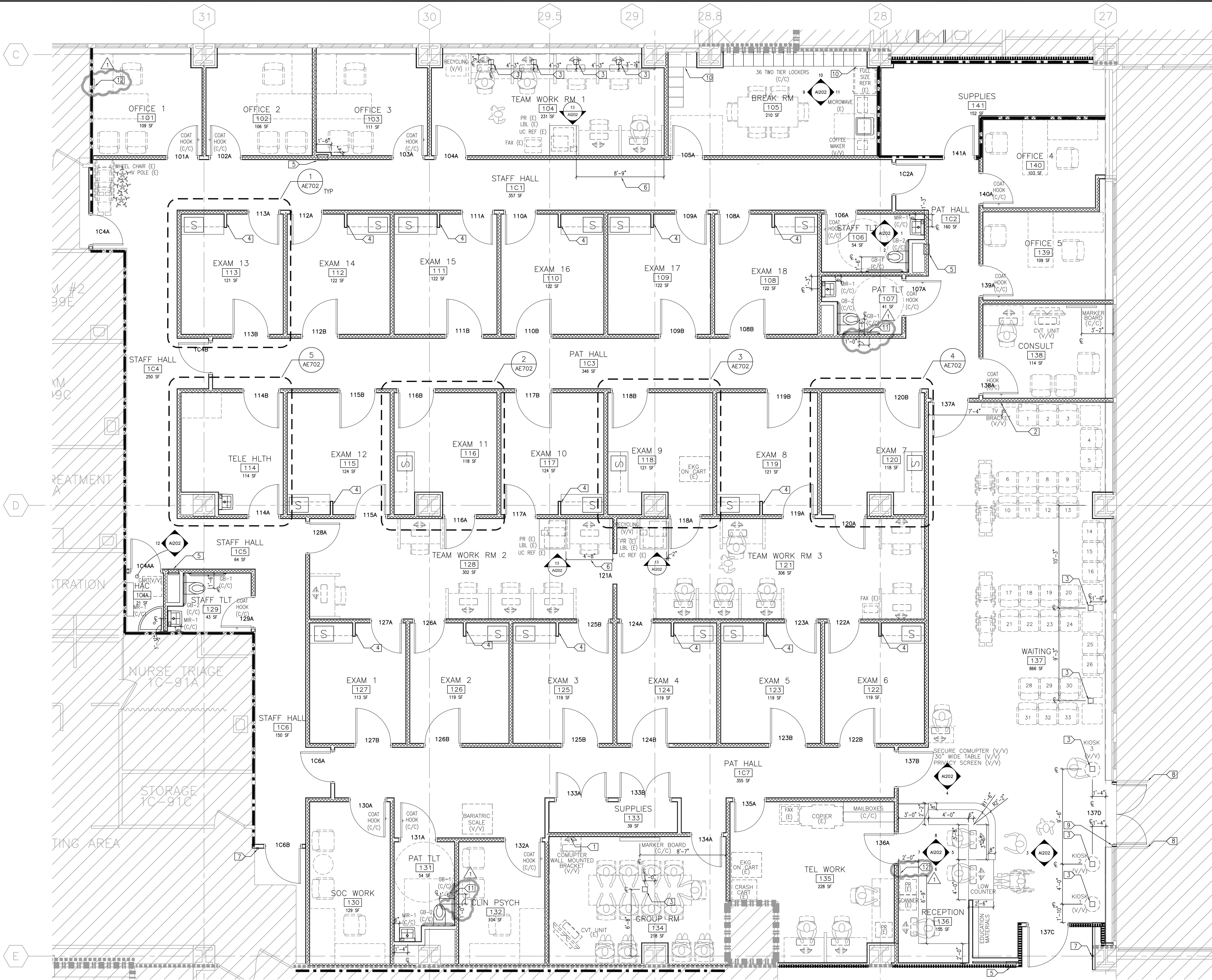


three inches = one foot
one and one half inches = one foot
one inch = one foot
three quarters inch = one foot
one half inch = one foot
three eighths inch = one foot
one quarter inch = one foot
one eighth inch = one foot



- LEGEND**
- 1 HOUR FIRE BARRIER (EXISTING)
 - 1 HOUR FIRE BARRIER (NEW)
 - 2 HOUR FIRE BARRIER (EXISTING)
 - SMOKE BARRIER (EXISTING)
 - SMOKE BARRIER (NEW)
 - PARTITION WITH SOUND ATTENUATION
 - EQUIPMENT/CASEWORK IN CONTRACT
 - EQUIPMENT (NIC)
 - FURNITURE (NIC)
 - CLEARANCE REQUIRED FOR ACCESSIBILITY (DOOR AND PLUMBING FIXTURES ONLY)
 - NOT IN CONTRACT AREA

PROCUREMENT DESIGNATIONS

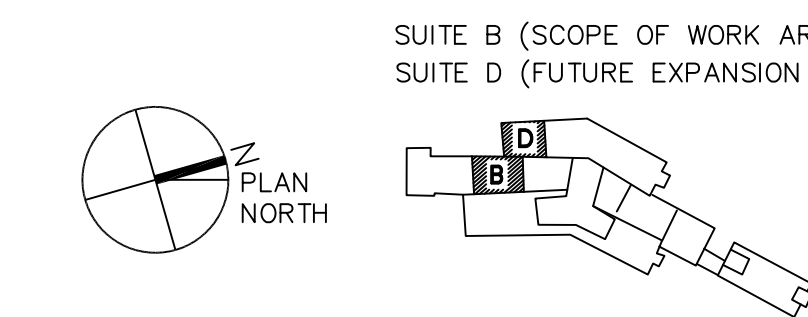
C/C: CONTRACTOR FURNISHED AND VA INSTALLED
V/V: CONTRACTOR FURNISHED AND VA INSTALLED
V/V: VA FURNISHED AND VA INSTALLED
(E): RELOCATED EXISTING EQUIPMENT

- GENERAL PLAN NOTES**
- SEE AE101 FOR FLOOR PLAN INFORMATION NOT SHOWN ON AE701
 - SEE AE702 FOR EXAM ROOMS AND TELE HLTH ROOM INFORMATION
 - COUNTER TOP SHALL HAVE 1" RADIUS AT OPEN EXTERIOR CORNER
 - ALL WOOD BLOCKING SHALL BE FIRE RETARDANT TREATED WOOD
 - EXACT LOCATION OF WALL MOUNTED V/V & (E) ITEMS SHALL BE COORDINATED WITH VA FOR BLOCKING. DIMENSIONS PROVIDED FOR V/V & (E) ITEMS ARE REFERENCE ONLY.

- SPECIFIC PLAN NOTES**
- PROVIDE BLOCKING FOR WALL MOUNTED BRACKETS
 - PROVIDE BLOCKING FOR WALL MOUNTED TV BRACKET
 - FLOOR BOX. SEE EP101 & EP101
 - SEE DETAIL 8E/AE601 FOR PARTITION FOR KEYBOARD & MONITOR MOUNT ANCHOR POINTS
 - RECESSED FIRE EXTINGUISHER CABINET
 - COORDINATE BASE CABINET LOCATION W/VA. THIS DIMENSION IS REFERENCE ONLY
 - CARD READER
 - REPLACE EXIST PUSH BUTTON ON EXIST GUARD RAIL WITH NEW PUSH BUTTON
 - REPLACE EXIST PUSH PLATE ON EXIST STOREFRONT FRAME
 - FILLER PANEL BY LOCKER WFR. TOP SHALL BE CONTINUOUS FROM ADJACENT LOCKER TOE
 - NURSE CALL STATION W/PULL CORD AT 44" AFF. REFER TO ET101
 - NURSE CALL ALARM STATION. COORDINATE EXACT LOCATION W/VA. REFER TO ET101

- TOILET ACCESSORIES SCHEDULE**
- NOT USED
 - GRAB BAR (GB-1): SATIN FINISH WITH PEENED GRIPPING SURFACE. 42" LONG.
 - GRAB BAR (GB-2): SATIN FINISH WITH PEENED GRIPPING SURFACE. 30" LONG.
 - COAT HOOK (CH-1): 3/4" TO BUMPER AND 2" HOOK.
 - METAL FRAMED MIRROR (MIR-1): 18"WIDE 30"HIGH GLASS MIRROR WITH STAINLESS STEEL ANGLE FRAME.
 - MOP RACKS (MR-1): UTILITY SHELF WITH MOP/BROOM HOLDERS AND RAG HOOKS. 40"WIDE 13"HIGH. 8"DEEP SHELF.

- EQUIPMENT NOTES**
- MAIL BOX: 60"(W) 24"(D - BASE CABINET ONLY) W/ MIN 55 12"WIDE 3"HIGH 2" DEEP MAIL SLOTS ON 36" HIGH BASE CABINET. BASE CABINET SHALL HAVE SLIDING DOORS AND 2 ADJUSTABLE SHELVES.
 - MARKER BOARD: 48"(W) 34"(H) IN GROUP ROOM 134 AND 36"(W) 34"(H) IN CONSULT 138.

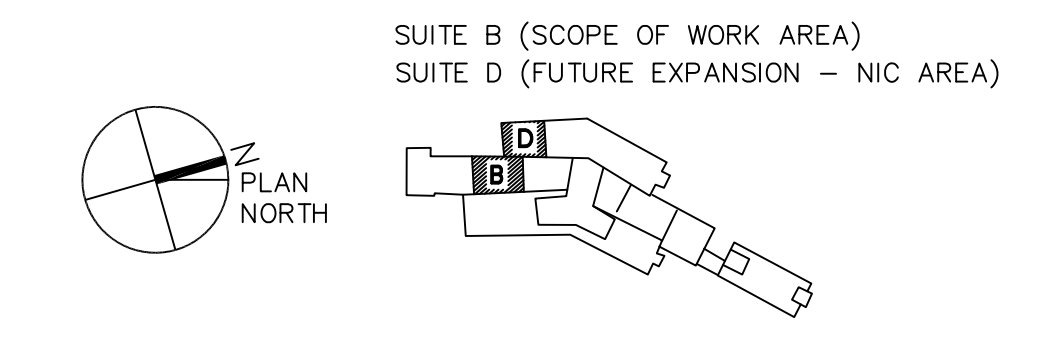
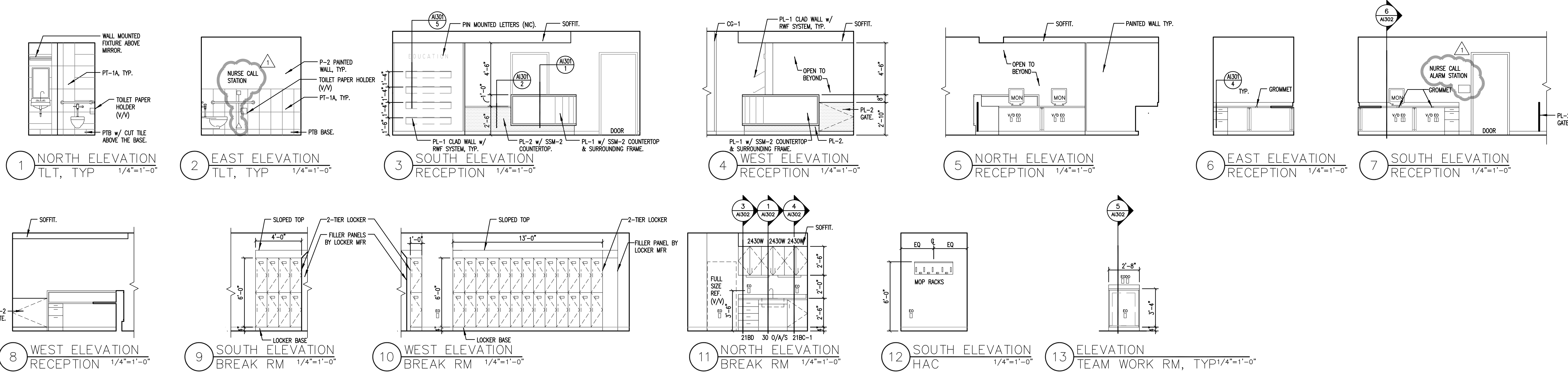


1 ENLARGED PLAN
1/4"=1'-0"




FULLY SPRINKLERED

BID SUBMISSION ADDENDUM 1 07/18/2013 08/12/2013 Revisions Date	CONSULTANTS:	ARCHITECT/ENGINEERS: ELLERBE BECKET STV 100 Years	PROFESSIONAL SEALS: Dr. John J. Sanderson MD, Patient Care Center Director Abigail Rodriguez RN, Program Management Officer Eather Hickson RN, Clinical Nurse Manager Richard Joso Safety and Occupational Health Manager	Drawing Title FIRST FLOOR ENLARGED PLAN Approved Director, VAHHCs Approved Chief of Engineering	Project Title JAMES J. PETERS VA MEDICAL CENTER BRONX NEW YORK RENOVATE PRIMARY CARE SUITE B Location BRONX NEW YORK Date 18 JULY 2013 Checked Drawn	Project Number 526-13-106 Building Number 100 Drawing Number AE701 Dwg. 09 of 47	Engineering Service Department of Veterans Affairs
--	---------------------	---	--	---	--	---	--

three inches = one foot
one and one half inches = one foot
one inch = one foot
three quarters inch = one foot
three eighths inch = one foot
one quarter inch = one foot
one eighth inch = one foot
one eighth inch = one foot



FULLY SPRINKLERED

BID SUBMISSION ADDENDUM 1		07/18/2013 08/12/2013	CONSULTANTS:	ARCHITECT/ENGINEERS: ELLERBE BECKET  	PROFESSIONAL SEALS: 	Dr. John J. Sanderson MD: Patient Care Center Director				Drawing Title INTERIOR ELEVATIONS		Project Title JAMES J. PETERS VA MEDICAL CENTER BRONX NEW YORK RENOVATE PRIMARY CARE SUITE B		Project Number 526-13-106		Engineering Service			
						Abigail Rodriguez RN: Program Management Officer								Building Number 100					
						Esther Hickson RN: Clinical Nurse Manager				Approved: Director, VAHVCS:		Location BRONX NEW YORK		Drawing Number A1202					
						Richard Joseo: Safety and Occupational Health Manager				Approved: Chief of Engineering		Date 18 JULY 2013		Checked Drawn			Dwg. 13 of 47		
Revisions		Date															Department of Veterans Affairs		

A

B

C

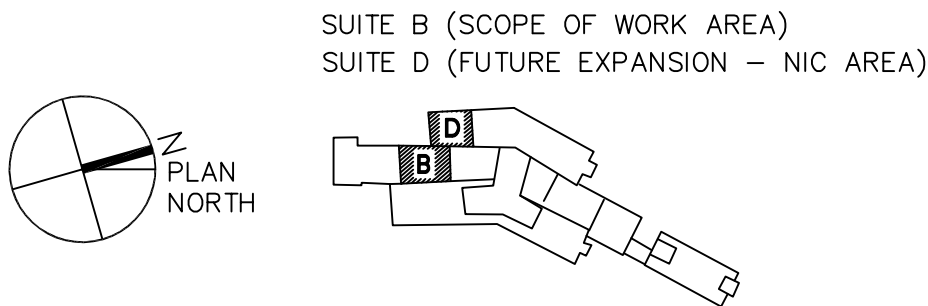
D

E

F

GENERAL NOTES

1. ALL FINAL LOCATIONS AND ARRANGEMENTS OF LIGHTING FIXTURES SHALL BE OBTAINED FROM THE ARCHITECTURAL REFLECTED CEILING PLAN.
2. (1) EACH BRANCH CIRCUIT HOMERUN SHALL HAVE NO MORE THAN THREE CIRCUITS. EACH BRANCH CIRCUIT HOMERUN SHALL HAVE A SEPARATE GREEN INSULATED EQUIPMENT GROUNDING CONDUCTOR.
3. MULTI-GANG BACKBOXES FOR DIFFERENT VOLTAGES AND TYPES OF EMERGENCY AND NORMAL BRANCH WIRING DEVICES SHALL HAVE DIVIDERS BETWEEN DEVICES.



FULLY SPRINKLERED

ELECTRICAL ABBREVIATIONS

1PH	SINGLE-PHASE
2/C	TWO-CONDUCTOR
3/C	THREE-CONDUCTOR
3PH	THREE-PHASE
4/C	FOUR-CONDUCTOR
4W	FOUR-WIRE
A/E	ARCHITECT/ENGINEER
AF	AMPERE FRAME OR AMP FUSE
AFF	ABOVE FINISHED FLOOR
ALT	ALTERNATE
AMP	AMPERE
AT	AMPERE TRIP
AUTO	AUTOMATIC
BFF	BELOW FINISH FLOOR
BLDG	BUILDING
C	CONDUIT
CD	CONSTRUCTION DOCUMENTS
CKT	CIRCUIT
CLG	CEILING
CT	CURRENT TRANSFORMER
CU	COPPER
DC	DIRECT CURRENT
DEMO	DEMOLITION
DIAG	DIAGRAM
DN	DOWN
DWG	DRAWING
EL	ELEVATION
ELEC	ELECTRIC OR ELECTRICAL
EMER	EMERGENCY
EMT	ELECTRICAL METALLIC TUBING
ENCL	ENCLOSURE
EPO	EMERGENCY POWER OFF
EPRF	EXPLOSION PROOF
EW	ELECTRIC WATER COOLER
EW	ELECTRIC WATER HEATER
EXIST	EXISTING
FA	FIRE ALARM
FACP	FIRE ALARM CONTROL PANEL
FIXT	FIXTURE
FLA	FULL LOAD AMPS
FT	FEET OR FOOT
FU	FUSED SWITCH
G/GND	GROUND OR GENERATOR
GFCI	GROUND FAULT CIRCUIT INTERRUPTER
HP	HORSEPOWER
J-BOX	JUNCTION BOX
kV	KILOVOLT
kVA	KILOVOLT AMPERE
kVAH	KILOVOLT AMPERE PER HOUR
kVAR	KILOVOLT AMPERE REACTIVE
kW	KILOWATT
kWH	KILOWATT HOUR
kWHM	KILOWATT HOUR METER
MATV	MASTER ANTENNA TELEVISION SYSTEM
MAX	MAXIMUM
MCA	MINIMUM CIRCUIT AMPS
MCB	MAIN CIRCUIT BREAKER
MLO	MAIN LUGS ONLY
MTD	MOUNTED
MTC	MOUNTING
NEC	NATIONAL ELECTRICAL CODE
NEMA	NATIONAL ELECTRICAL MANUFACTURERS ASSOCIATION
NEUT/N	NEUTRAL
NFPA	NATIONAL FIRE PROTECTION ASSOCIATION
NTS	NOT TO SCALE
P	POLE
PH	PHASE
PHL	PANEL
PWR	POWER
RM	ROOM
SF	SQUARE FOOT (FEET)
SPEC	SPECIFICATION
SW	SWITCH
TVSS	TRANSIENT VOLTAGE SURGE SUPPRESSION
TYP	TYPICAL
UGND	UNDERGROUND
UON	UNLESS OTHERWISE NOTED
VA	VOLT AMPERE
VOLT	VOLTAGE
W	WATT
WP	WEATHERPROOF
XFMR	TRANSFORMER

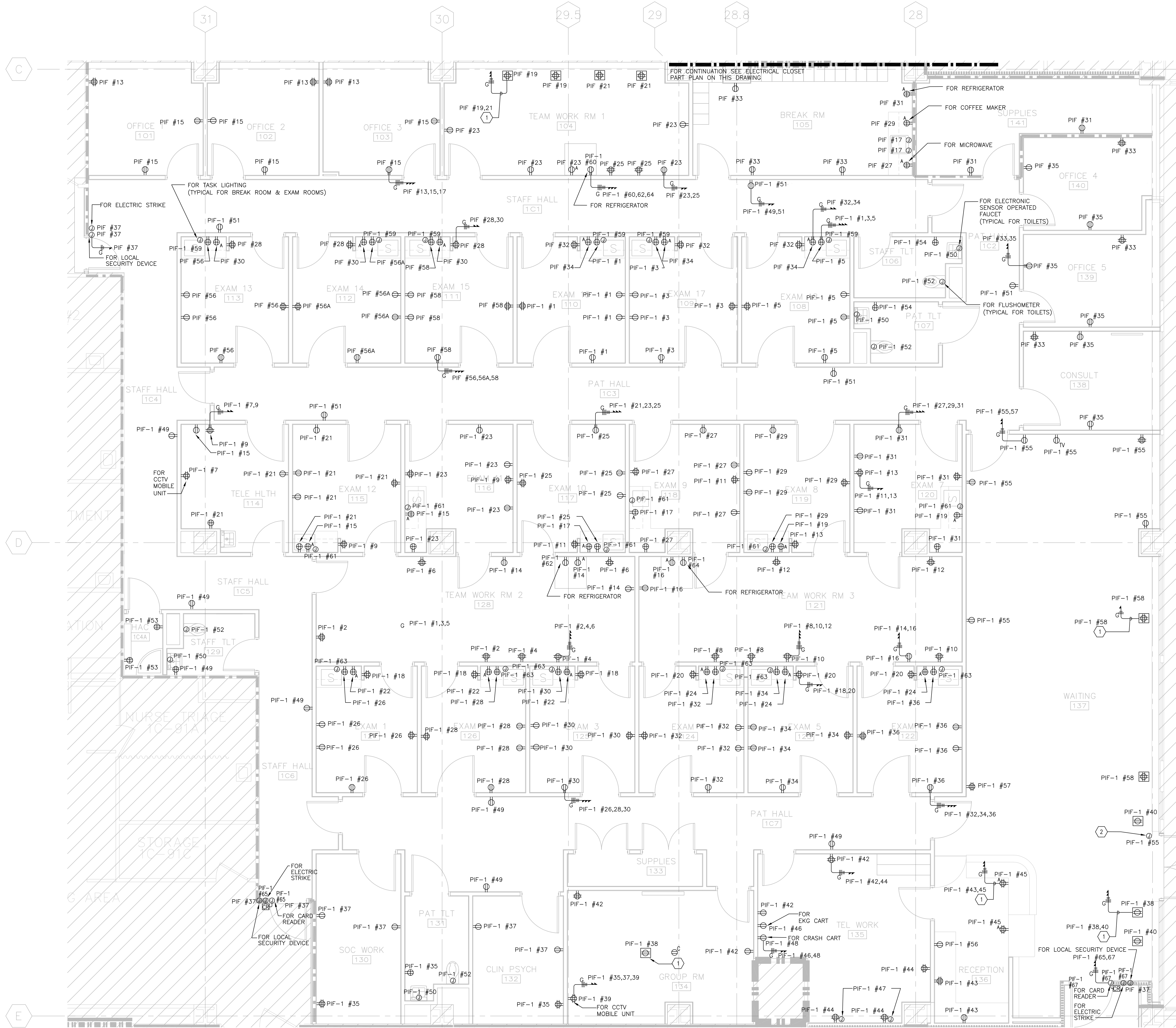
ELECTRICAL SYMBOLS

	MOTOR, SINGLE-PHASE
	MOTOR, THREE-PHASE
	JUNCTION BOX
	BRANCH CIRCUIT HOMERUN. LINES INDICATE NUMBER OF CIRCUITS, NEUTRAL, AND SWITCH LEG CONDUCTORS. ONE SEPARATE GREEN GROUNDING CONDUCTOR SHALL BE PROVIDED FOR EACH HOMERUN; NOT SHOWN
	PULL BOX
	PANELBOARD CABINET, SURFACE MOUNTED
	RECEPTACLE, DUPLEX
	RECEPTACLE, DUPLEX MOUNTED 3" ABOVE COUNTER TOP/ COUNTER TOP BACK SPLASH
	RECEPTACLE, DUPLEX, FIRE RATED POKE-THRU ASSEMBLY
	RECEPTACLE, QUADRUPLEX, FIRE RATED POKE-THRU ASSEMBLY
	RECEPTACLE, DUPLEX, C = CEILING MOUNT
	RECEPTACLE, DUPLEX WITH GROUND FAULT CIRCUIT INTERRUPTER
	RECEPTACLE, QUADRUPLEX
	RECEPTACLE, SINGLE
	RECEPTACLE, SPECIAL PURPOSE A = 120V, 20A, 1 PHASE, 2-POLE, 3W, NEMA 5-20R. B = 208V, 20A, 1 PHASE, 2-POLE, 3W, NEMA 6-20R. C = 120V, 30A, 1 PHASE, 2-POLE, 3W, NEMA 5-30R. D = 208V, 30A, 1 PHASE, 2-POLE, 3W, NEMA 6-30R. E = 208V, 60A, 1 PHASE, 3-POLE, 4W, NEMA 14-60R. F = 208V, 30A, 3 PHASE, 3-POLE 4W, NEMA 15-30R. G = 208V, 50A, 3 PHASE, 3 POLE, 4W, NEMA 15-30R. H = 208V, 60A, 3 PHASE, 3 POLE, 4W, NEMA 15-60R.
	DISCONNECT SWITCH, FUSED
	DISCONNECT SWITCH, UNFUSED
	STARTER, COMBINATION WITH DISCONNECT SWITCH
	STARTER OR MOTOR CONTROLLER
	VENTILATOR OR FAN COIL UNIT OUTLET
	CONDUIT TERMINATED 6" [152mm] AFF IN STANDARD BOX FOR EXTENSION TO EQUIPMENT AS DIRECTED.
	CONDUIT TERMINATED W/COUPLING (FLUSH W/FINISHED FLOOR) FOR EXTENSION TO EQUIPMENT AS DIRECTED.
	AUDIO DEVICE; LETTER INDICATES AS FOLLOWS: M=MOUNT C=CEILING D=DESK F=FLUSH H=HIDDEN N=NEUTRAL M=MULLION P=PEDESTAL R=RACK S=SURFACE W=WALL T=TECHNOLOGY/TYPE B=BELL C=CHIME H=HORN K=KLAXON L=LISTEN-IN M=MICROPHONES-SOUNDER S=SPEAKER Z=BUZZER
	FIBER OPTIC MODULE; LETTER INDICATES AS FOLLOWS: M=MOUNT C=CEILING D=DESK F=FLUSH H=HIDDEN N=NEUTRAL M=MULLION P=PEDESTAL R=RACK S=SURFACE W=WALL T=TECHNOLOGY/TYPE R=RECEIVER T=TRANSCIEVER TX=TRANSMITTER
	OUTLET, COMBINATION TELEPHONE/DATA COMMUNICATION
	OUTLET, COMBINATION TELEPHONE/DATA COMMUNICATION, FIRE RATED POKE-THRU ASSEMBLY
	CABLE TELEVISION LINE = CATV
	CLOSED CIRCUIT TELEVISION LINE = CCTV, MINIMUM 1" [25mm] CONDUIT
	FIBEROPTICS LINE = FO
	TELEPHONE LINE = T
	INTERCOM LINE = I, MINIMUM 3/4" [19mm] CONDUIT.
	SOUND LINE = S
	NURSE CALL LINE = NC, MINIMUM 3/4" [19mm] CONDUIT.
	RADIO CONDUIT RUN, MINIMUM 3/4" [19mm] CONDUIT.

	OUTLET TELEPHONE; LETTER INDICATES AS FOLLOWS: J = JACK TYPE W = WALL TYPE
	OUTLET DATA ONLY
	OUTLET DATA, FLOOR
	OUTLET DATA, C = CEILING MOUNT
	OUTLET; LETTER INDICATES AS FOLLOWS: A = AUDIO V = VIDEO I = INTERCOM
	SPEAKER, CEILING MOUNTED, "X" INDICATES THE TYPE, PROVIDE SCHEDULE ON LEGEND
	SPEAKER, WALL MOUNTED, "X" INDICATES THE TYPE, PROVIDE SCHEDULE ON LEGEND. MTD. 7'-6" [2286mm] AFF UNLESS OTHERWISE NOTED.
	OUTLET, TELEVISION BLANK = 4 11/16" [119mm] MASTER ANTENNA OUTLET BOX W/BLANK COVER, MTD. 18" [457mm] AFF UNLESS OTHERWISE NOTED.
	C = CAMERA (CCTV SYSTEM), MTD 18" [457mm] AFF
	M = MONITOR (CTTV SYSTEM)
	NURSE'S CALL MASTER STATION MTD ON NURSE'S COUNTER TOP UNLESS OTHERWISE NOTED.
	R = REMOTE STATION, MTD 5'-0" [1524mm] AFF UNLESS NOTED OTHERWISE.
	NURSE CALL TERMINAL CABINET - HEAD END CABINET
	NURSE CALL STATION. E = MTD 48" AFF 12" FROM TOILET BOWL - PULL CORD.
	NURSE CALL DOME LIGHT WALL MOUNTED 6" ABOVE DOOR
	SECURITY/ DURESS ALARM BUTTON MOUNTED 3" ABOVE COUNTER TOP/COUNTER TOP BACK SPLASH
	CARD READER
	TELEPHONE TERMINAL CABINET
	TELEPHONE BACKBOARD (WALL MOUNTED)
	LIGHT FIXTURE, RECESSED FLUORESCENT, 2'x2' LETTER INDICATES TYPE.
	LIGHT FIXTURE, RECESSED FLUORESCENT, 2'x4' LETTER INDICATES TYPE.
	LIGHT FIXTURE CEILING MOUNTED
	LIGHT FIXTURE, WALL MOUNTED
	EXIT SIGN, WALL MOUNTED WITH DIRECTIONAL ARROWS AND FACES AS SHOWN
	SWITCH BLANK = SINGLE POLE 3 = THREE-WAY 4 = FOUR-WAY D = DIMMER K = KEY OPERATED Mo = OCCUPANCY SENSOR MoD=OCCUPANCY SENSOR WITH DIMMING CAPABILITIES T = TIMER OPERATED EXM=ADDITIONAL LAMPS IN EXAM LIGHT

BID SUBMISSION ADDENDUM 1	07/18/2013 08/12/2013	CONSULTANTS:	ARCHITECT/ENGINEERS: ELLERBE BECKET STV 100 Years	PROFESSIONAL SEALS: Dr. John J. Sanderson MD : Patient Care Center Director Abigail Rodriguez RN : Program Management Officer Esther Hicken RN : Clinical Nurse Manager Richard Joao : Safety and Occupational Health Manager	Drawing Title ELECTRICAL ABBREVIATIONS, SYMBOL LIST AND GENERAL NOTES	Project Title JAMES J. PETERS VA MEDICAL CENTER BRONX NEW YORK RENOVATE PRIMARY CARE SUITE B	Project Number 526-13-106 Building Number 100 Drawing Number E0001 Dwg. 28 of 47	Engineering Service Department of Veterans Affairs	
Revisions	Date				Approved Director, VAHHCS	Location BRONX NEW YORK	Date 18 JULY 2013	Checked	Drawn

three inches = one foot
one and one half inches = one foot
one inch = one foot
three quarters inch = one foot
one half inch = one foot
three eighths inch = one foot
one quarter inch = one foot
one eighth inch = one foot



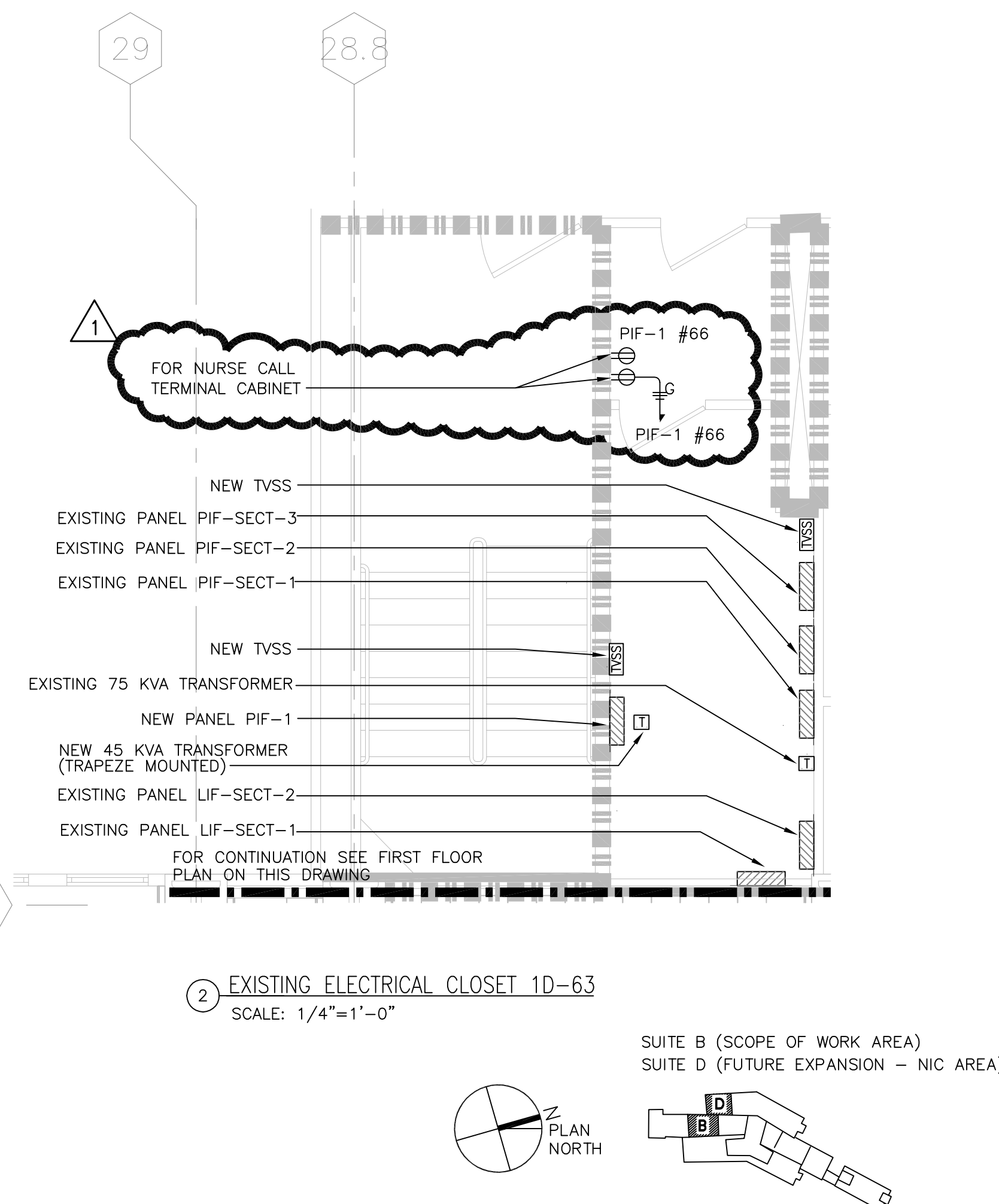
1 ELECTRICAL FIRST FLOOR POWER PLAN
SCALE: 1/4"=1'-0"

GENERAL NOTES





1. FOR SYMBOL LIST, ABBREVIATIONS AND GENERAL NOTES SEE DRAWING E001.
2. FOR PANEL SCHEDULES SEE DRAWING E601.
3. FOR EXACT LOCATION AND MOUNTING HEIGHT OF RECEPTACLES AND CONTROL DEVICES REFER TO ARCHITECTURAL ROOM LAYOUT.

CODED NOTES

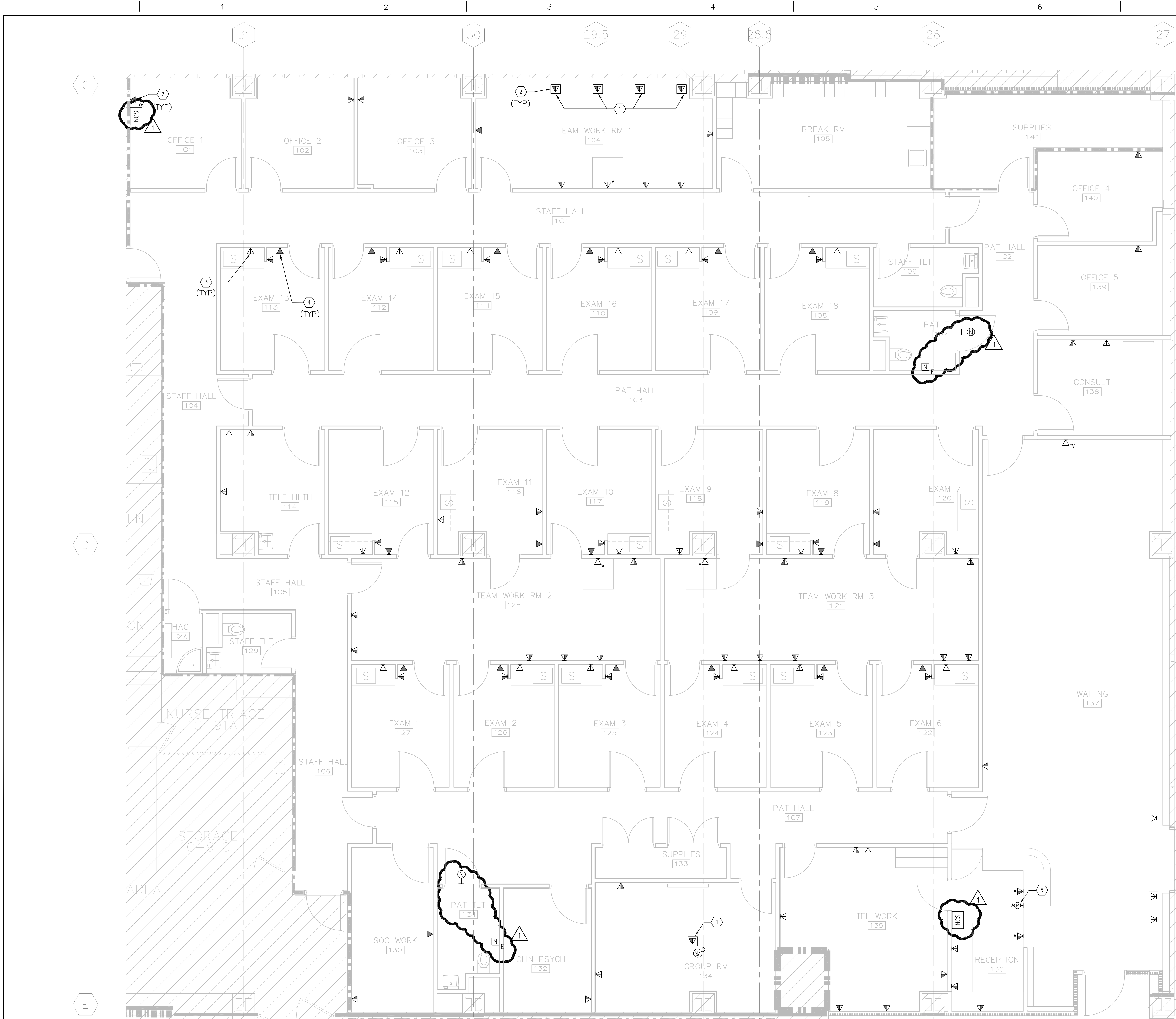
- 1 BRANCH CIRCUIT CONDUITS REFERENCED BY THIS NOTE SHALL BE RUN IN THE CEILING OF THE FLOOR BELOW AND ROUTED VIA FIRE RATED POKE-THRU.
- 2 WHERE REFERENCED BY THIS NOTE PROVIDE ALL NECESSARY POWER AND CONTROL WIRING AND CONDUIT FOR THE INSTALLATION OF AN ADA DOOR OPENER PUSHBUTTON AT THE OUTSIDE OF THE ENTRY DOOR. INSTALL THE PUSHBUTTON, LIMIT SWITCHES, STEP-DOWN TRANSFORMER, TIME DELAY RELAY, ETC. FOR A COMPLETE INSTALLATION OF THIS ADA SYSTEM, AS PER MANUFACTURER'S REQUIREMENTS.



FULLY SPRINKLERED

BID SUBMISSION		07/18/2013	CONSULTANTS:		ARCHITECT/ENGINEERS: ELLERBE BECKET   		PROFESSIONAL SEALS:		Dr. John J. Sanderson MD : Patient Care Center Director		Drawing Title		Project Title		Project Number		Engineering Service	
ADDENDUM 1		08/12/2013							Abigail Rodriguez RN : Program Management Officer		ELECTRICAL		JAMES J. PETERS VA MEDICAL CENTER		526-13-106			
											FIRST FLOOR POWER PLAN		BRONX NEW YORK		Building Number			
													RENOVATE PRIMARY CARE SUITE B		100			
															Drawing Number			
															EP101			
Revisions:		Date							Esther Hicken RN : Clinical Nurse Manager		Approved Director, VAHHCS:		Location		Drawing Number		 Department of Veterans Affairs	
									Richard Joao : Safety and Occupational Health Manager		Approved Chief of Engineering : Michael Ong		BRONX NEW YORK		EP101			
											Date		Checked		Drawn			
											18 JULY 2013						Dwg. 31 of 47	

three inches = one foot
one and one half inches = one foot
one inch = one foot
three quarters inch = one foot
one half inch = one foot
three eighths inch = one foot
one quarter inch = one foot
one eighth inch = one foot
one sixteenth inch = one foot



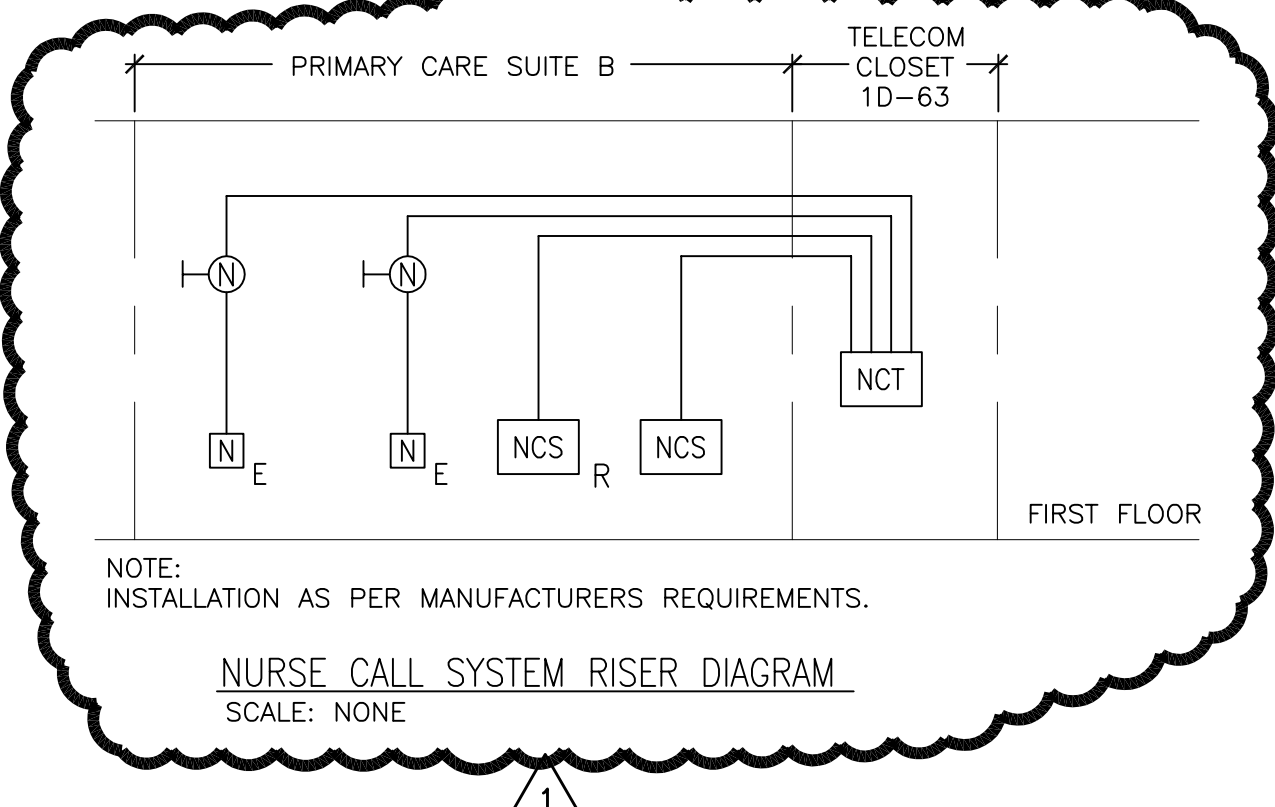
1 TELECOMMUNICATION FIRST FLOOR POWER PLAN
SCALE: 1/4"=1'-0"

GENERAL NOTES

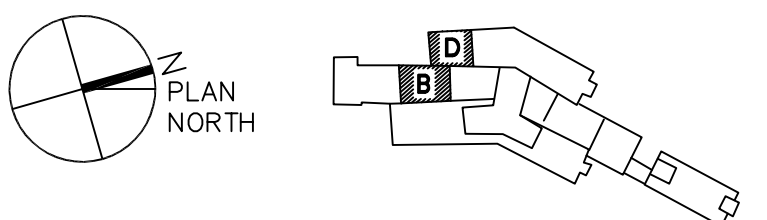
- FOR SYMBOL LIST, ABBREVIATIONS AND GENERAL NOTES SEE DRAWING E001.
- ALL FULL HEIGHT WALLS ARE TO BE PROVIDED WITH A CORE-DRILLED OPENING FOR THE PASSAGE OF VOICE AND DATA CONDUITS. ALL WALL PENETRATIONS ARE TO BE SEALED WITH SEALANT UPON COMPLETION OF CABLE INSTALLATION. ALL WALL PENETRATIONS SEALS ARE TO BE UL COMPLIANT ASSEMBLIES AND FIRE RATED WHERE REQUIRED.
- ALL HORIZONTAL CABLES ARE TO BE PROVIDED WITH 12 INCHES OF SLACK CABLE COILED AND STORED INSIDE THE DEVICE OUTLET BOX.
- CABLE TRAYS ARE TO BE INDEPENDENTLY SUPPORTED FROM WALL MOUNTED SUPPORTS/ BRACKETS OR TRAPEZE ASSEMBLIES OR FROM STRUCTURAL SLAB USING TRAPEZE ASSEMBLIES. CABLE TRAYS RUN IN THE CORRIDORS ARE TO BE MOUNTED AT 12" ABOVE THE ACCESSIBLE CEILING. PROVIDE PRE-MANUFACTURED OFFSETS, BENDS, ELBOWS, ETC AS REQUIRED TO PASS ALL BEAMS, MECHANICAL DUCTS, PIPING, ETC AND TO PROVIDE A FOR A CONTINUOUS CABLE TRAY INSTALLATION. REVIEW LOCATION WITH VA PRIOR TO INSTALL.
- PROVIDE WATERFALLS AT EACH CABLE TRAY TERMINATION WHERE THE WALL SLEEVES AND CABLE TRAYS ARE NOT AT ELEVATION THAN THE CABLE TRAYS. ADD WATERFALLS TO THE WALL SLEEVES, SHOULD THE CABLE TRAY BE HIGHER IN ELEVATION THAN THE WALL SLEEVE, ADD A WATERFALL TO THE CABLE TRAY.
- WALL MOUNTED TELEPHONE WITH LUGS WILL BE PLACED 48" A.F.F. UNLESS OTHERWISE NOTED.
- FOR EXACT LOCATION AND MOUNTING HEIGHT OF NURSE CALL STATIONS/NURSE CALL ALARM STATIONS REFER TO AE701.

CODED NOTES

- WHERE REFERENCED BY THIS NOTE, CABLING WILL BE RUN IN THE CEILING FLOOR BELOW ROUTED VIA A FIRE RATED POKE-THRU.
- FOR EACH TELEPHONE/DATA OUTLET RUN FOUR (4) 4 UTP 24AWG CAT 6 CABLES TO TELECOMMUNICATIONS CLOSET (2 VOICE AND 2 DATA CABLES).
- FOR EACH DATA OUTLET RUN TWO (2) 4 UTP 24AWG CAT 6 CABLES TO TELECOMMUNICATIONS CLOSET (2 DATA CABLES).
- FOR EACH TELEPHONE RUN ONE (1) 4 UTP 24AWG CAT 6 CABLE TO TELECOMMUNICATIONS CLOSET (1 VOICE CABLE).
- CONTRACTOR TO COORDINATE RECEPTION DESK PANIC BUTTONS WITH VA RESIDENT ENGINEER AND VA POLICE.



SUITE B (SCOPE OF WORK AREA)
SUITE D (FUTURE EXPANSION - NIC AREA)



FULLY SPRINKLERED

BID SUBMISSION ADDENDUM 1 07/18/2013 08/12/2013	CONSULTANTS:	ARCHITECT/ENGINEERS: ELLERBE BECKET STV 100 Years	PROFESSIONAL SEALS: Dr. John J. Sanderson MD : Patient Care Center Director Abigail Rodriguez RN : Program Management Officer Esther Hicken RN : Clinical Nurse Manager Richard Joao : Safety and Occupational Health Manager	Drawing Title TELECOMM FIRST FLOOR PLAN	Project Title JAMES J. PETERS VA MEDICAL CENTER BRONX NEW YORK RENOVATE PRIMARY CARE SUITE B	Project Number 526-13-106 Building Number 100	Engineering Service
Revisions	Date			Approved Director, VA MHCS	Location BRONX NEW YORK	Drawing Number ET101	
				Approved Chief of Engineering : Michael Ong	Date 18 JULY 2013	Checked	Drawn