

ENLARGED PLAN - GROUND FLOOR - PART 1

1/4" = 1'-0"

CURRENT DESIGN

CASEWORK GENERAL NOTES

- 1. DO NOT SCALE DRAWINGS.
- 2. ELEVATIONS HAVE BEEN DRAWN FOR THE CASEWORK AND APPEAR ON DRAWINGS IN THE A-800 SERIES. REFER TO DRAWING A800 FOR TYPICAL CABINETS AND DETAILS. REFER TO PLANS, ENLARGED PLANS, AND ELEVATIONS FOR DIMENSIONS, QUANTITY, AND SPACING.
- 3. BASE UNITS, WALL CABINETS, AND SERVICE CHASE PANELS SHALL BE OF METAL OR WOOD CONSTRUCTION. AS NOTED, CABINET TYPES, CONFIGURATIONS, AND DIMENSIONS SHALL BE AS DETAILED ON CASEWORK ELEVATIONS. CASEWORK CONTRACTOR IS RESPONSIBLE FOR FIELD VERIFYING ALL DIMENSIONS BEFORE BEGINNING FABRICATION.
- 4. COUNTERTOPS AT LAB BENCHES AND TABLES SHALL BE EPOXY RESIN, SPECIFIED IN DIV. 12 (UNLESS OTHERWISE NOTED). REFER TO NOTES ON ENLARGED LAB PLANS AND/OR CASEWORK ELEVATIONS DRAWINGS AND SPECIFICATIONS FOR OTHER COUNTERTOP MATERIALS. PROVIDE 1/8" RADIUS ON OUTSIDE CORNERS. COUNTERTOPS TO OVERHANG BASE UNITS AND SERVICE PANELS BY 1".
- 5. REFER TO PLANS, ENLARGED PLANS AND ELEVATIONS FOR DEPTHS OF COUNTERTOPS.
- 6. BACK AND SIDE SPLASHES TO BE 1" THICK AND 2" HIGH (U.O.N.). MATERIAL TO MATCH COUNTERTOPS. PROVIDE SIDE SPLASHES AT OXYGEN BURNER PARTITIONS, ADJACENT CASEWORK AND CABINETS, AND WHERE COUNTERTOPS ARE ADJACENT TO FUME HOODS.
- 7. SINKS SHALL BE MODIFIED EPOXY RESIN WITH SIZE AS INDICATED IN THE LEGEND, UNLESS OTHERWISE NOTED. SINKS SHALL BE IN SINK BASE UNITS. SINK COLOR TO BE COORDINATED WITH COUNTERTOP COLOR.
- 8. COORDINATE SIZE, LOCATION OF FAUCETS, AND SERVICE VALVES SO THAT THE FAUCET AND VALVE COMPONENTS DO NOT INTERFERE WITH EACH OTHER.
- 9. PROVIDE FINISHED CLOSURE PANELS AT EXPOSED END CONDITIONS.
- 10. PROVIDE FILLERS/CORNER PANELS AT WALLS AND COLUMN CONDITIONS, U.O.N.
- 11. INSTALL CLOSURE PANELS BETWEEN BACK OF CABINETS OR HOODS AND WALLS AT EXPOSED ENDS.
- 12. COORDINATE WITH REFLECTED CEILING PLANS FOR PROPER CEILING HEIGHTS AND PIPE DROP ENCLOSURE HEIGHTS/LOCATIONS.
- 13. CONTRACTOR TO COORDINATE THE INSTALLATION OF SUPPLEMENTARY FRAMING, BLOWING, AND BRACING OR SUPPORT OF ALL WALL MOUNTED AND CEILING MOUNTED ITEMS. COMPLY WITH DETAILS INDICATED OR IF NONE AVAILABLE, WITH "OXYGEN CONSTRUCTION HANDBOOK" PUBLISHED BY USGC. MINIMUM SIZE FOR BACKING IS 8" X 16" GA.
- 14. PROVIDE 3/8" DIAMETER PLASTIC GROMMET WHERE GROMMETS ARE INDICATED, UNLESS OTHERWISE NOTED.
- 15. PENETRATIONS THROUGH BENCH TOP SHALL BE SEALED WITH 100% SILICONE BASE SEALANT.
- 16. BACKS OF COUNTERTOPS AND SPLASHES AGAINST WALLS SHALL BE SEALED TO THE WALL WITH 100% SILICONE BASE SEALANT.
- 17. FREE STANDING SHELVING AND CASEWORK SHALL BE SECURED TO PREVENT TIPPING. SUBMIT SHOP DRAWINGS OF ATTACHMENT PRIOR TO INSTALLATION.
- 18. SAFETY SHOWER/EYE WASH UNITS SHALL COMPLY WITH ANSI STANDARDS FOR USABILITY BY THE PHYSICALLY CHALLENGED. SAFETY SHOWER/EYE WASH UNITS SHALL BE FINISHED AND INSTALLED UNDER DIVISION 22.
- 19. FOR LABORATORY SERVICE FITTING TYPES, LOCATIONS AND ORDER, SEE ENLARGED PLANS. THESE FITTINGS ARE SPECIFIED IN DIVISION 12.
- 20. PROVIDE PLASTIC TRAY SHELF PROTECTORS AT ALL LAB BASE CABINETS BELOW FUME HOODS AND SINKS.
- 21. REFER TO THE EQUIPMENT LIST FOR OWNER FURNISHED/OWNER INSTALLED AND OWNER FURNISHED/CONTRACTOR INSTALLED EQUIPMENT.
- 22. WOOD CASEWORK BASE CABINET BASES TO BE MARINE GRADE PLYWOOD OR FIBERGLASS.
- 23. ALL DRAWERS AND DOORS ON ALL BASE CABINETS AND WALL CABINETS TO HAVE LOCKS. COORDINATE FINAL KEYING WITH OWNER.




SCIENTIFIC ABBREVIATIONS

- CO2 = CARBON DIOXIDE
- OW = COLD WATER
- FE = FIRE EXTINGUISHER
- N = NITROGEN
- NG = LAB GAS (NATURAL GAS)
- LA = LAB AIR (COMPRESSED)
- LOW = LAB COLD WATER
- LW = LAB WARM WATER
- LV = LAB VACUUM
- SEW = SAFETY EYE WASH
- SGEN = SAFETY SHOWER AND SAFETY EYE WASH COMBINATION UNIT
- RO = REVERSE OSMOSIS WATER
- CG = CORNER GUARDS

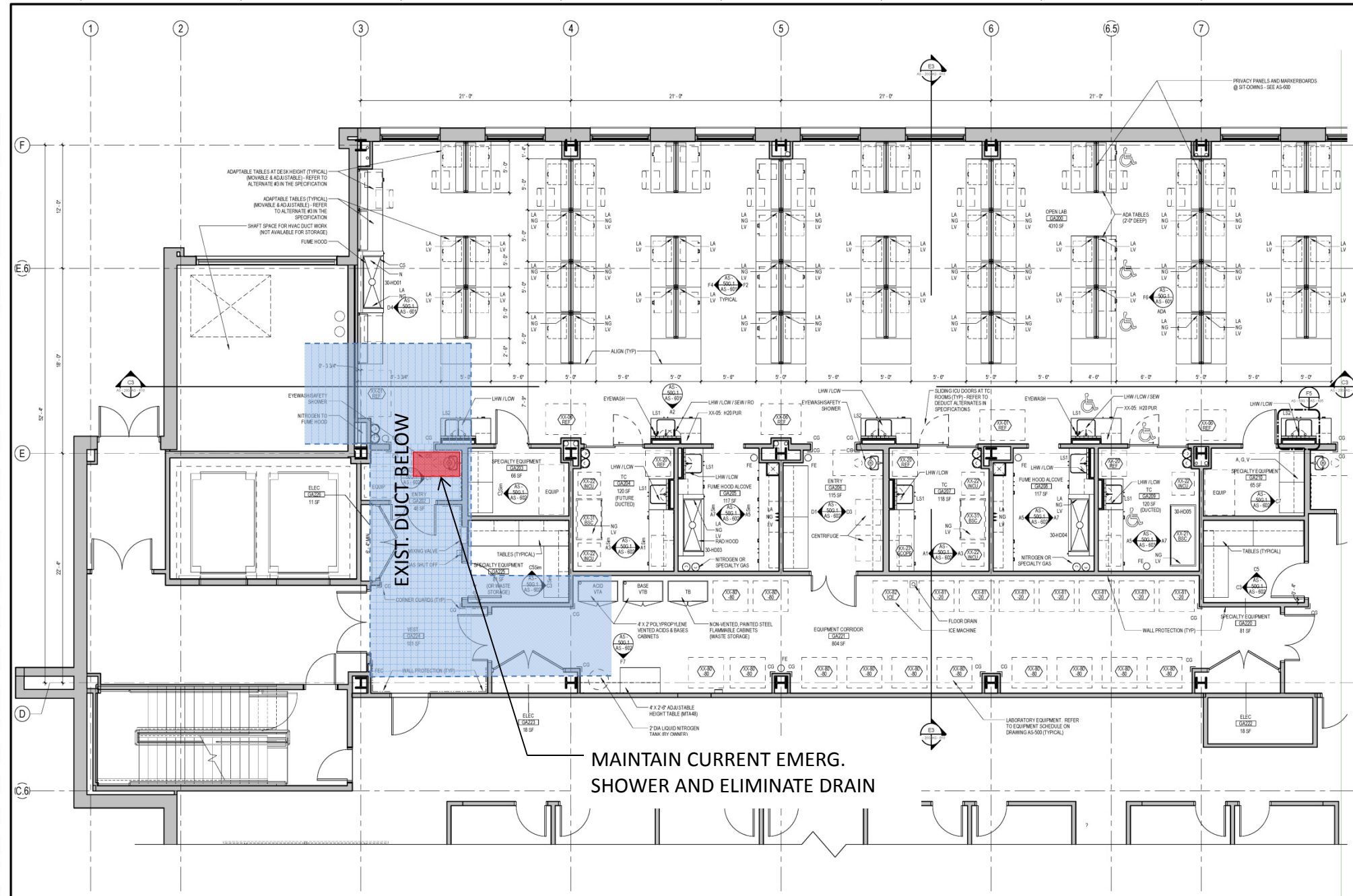
SYMBOLS LEGEND

- ADJUSTABLE WALL SHELVE (2 TIER U.O.N.) OR WALL CABINETS. SEE CASEWORK ELEVATIONS.
- CYLINDER RESTRAINT - (2, 3, OR 4 CYLINDERS PER PLAN). REFER TO DETAIL ON DRAWING A500. (CYLINDER BY OWNER)
- CYLINDER RESTRAINT - (2, 3, OR 4 CYLINDERS PER PLAN). REFER TO DETAIL ON DRAWING A500. (CYLINDER BY OWNER)
- DEWAR BUMPERS - REFER TO DETAIL ON DRAWING A500. (DEWAR BY OWNER)
- FUME HOOD WITH DISHED EPOXY RESIN WORK SURFACE. PROVIDE LAB SERVICE OUTLETS AS INDICATED ON THE ENLARGED LAB PLANS. REFER TO CASEWORK ELEVATIONS FOR REGULAR OR ADA HEIGHT. REFER TO FUME HOOD DETAILS AND SPECIFICATIONS ON SHEET AS-415.
- LAB EQUIPMENT - REFER TO LAB EQUIPMENT SCHEDULE ON DRAWING AS-500.
- SAFETY SHOWER AND EYE WASH (SPECIFIED IN DIVISION 22). REFER TO DETAILS ON DRAWING AS-500.
- PIPE DROP ENCLOSURE - REFER TO DETAILS.
- HW / CW SPOUT
- OW SPOUT
- RO SPOUT (FIXED)
- CAMERA
- L81
- L82
- L83
- DESK CHAIR

KEY PLAN

CONSULTANTS:  Stantec Architecture and Engineering LLC 400 Morgan Center 101 E. Diamond Street Butler, PA 16011		ARCHITECT/ENGINEERS:  5700 Powell Grove Dr. Suite 100 Midlothian, Virginia 23112 (804) 282-2403 advetect.com A certified Service Disabled Veteran Owned Small Business (SDVOSB)		Approved: VAPHS Director Approved: Associate Director Approved: ACCSR/MD	Approved: V.P. Facility Manager Approved: Manager Project Section Approved: Project Engineer	Drawing Title Enlarged Plan - Laboratory Ground Floor - Part 1 Scale: As indicated Building Number: 30 Drawn By: Checked By:	Project Title UNIVERSITY DRIVE RESEARCH OFFICE BUILDING WET LABS Location University Drive, Pittsburgh, PA 15240 Date: 4/30/2013 AutoCAD File Number:	Project Number 646-10-100 Contract Number VA244-P-1827 Drawing Number AS - 50G.1 Dwg. XXX of XXX	Office of Construction and Facilities Management 
--	--	---	--	--	--	--	---	---	---

one eighth inch = one foot
one quarter inch = one foot
one half inch = one foot
three eighths inch = one foot
one inch = one foot
one and one eighth inch = one foot
one and one quarter inch = one foot
one and one half inch = one foot
one and three quarters inch = one foot
two inches = one foot
three inches = one foot
four inches = one foot
five inches = one foot
six inches = one foot
seven inches = one foot
eight inches = one foot
nine inches = one foot
ten inches = one foot
eleven inches = one foot
twelve inches = one foot
thirteen inches = one foot
fourteen inches = one foot
fifteen inches = one foot
sixteen inches = one foot
seventeen inches = one foot
eighteen inches = one foot
nineteen inches = one foot
twenty inches = one foot
twenty one inches = one foot
twenty two inches = one foot
twenty three inches = one foot
twenty four inches = one foot
twenty five inches = one foot
twenty six inches = one foot
twenty seven inches = one foot
twenty eight inches = one foot
twenty nine inches = one foot
thirty inches = one foot
thirty one inches = one foot
thirty two inches = one foot
thirty three inches = one foot
thirty four inches = one foot
thirty five inches = one foot
thirty six inches = one foot
thirty seven inches = one foot
thirty eight inches = one foot
thirty nine inches = one foot
forty inches = one foot
forty one inches = one foot
forty two inches = one foot
forty three inches = one foot
forty four inches = one foot
forty five inches = one foot
forty six inches = one foot
forty seven inches = one foot
forty eight inches = one foot
forty nine inches = one foot
fifty inches = one foot
fifty one inches = one foot
fifty two inches = one foot
fifty three inches = one foot
fifty four inches = one foot
fifty five inches = one foot
fifty six inches = one foot
fifty seven inches = one foot
fifty eight inches = one foot
fifty nine inches = one foot
sixty inches = one foot
sixty one inches = one foot
sixty two inches = one foot
sixty three inches = one foot
sixty four inches = one foot
sixty five inches = one foot
sixty six inches = one foot
sixty seven inches = one foot
sixty eight inches = one foot
sixty nine inches = one foot
seventy inches = one foot
seventy one inches = one foot
seventy two inches = one foot
seventy three inches = one foot
seventy four inches = one foot
seventy five inches = one foot
seventy six inches = one foot
seventy seven inches = one foot
seventy eight inches = one foot
seventy nine inches = one foot
eighty inches = one foot
eighty one inches = one foot
eighty two inches = one foot
eighty three inches = one foot
eighty four inches = one foot
eighty five inches = one foot
eighty six inches = one foot
eighty seven inches = one foot
eighty eight inches = one foot
eighty nine inches = one foot
ninety inches = one foot
ninety one inches = one foot
ninety two inches = one foot
ninety three inches = one foot
ninety four inches = one foot
ninety five inches = one foot
ninety six inches = one foot
ninety seven inches = one foot
ninety eight inches = one foot
ninety nine inches = one foot
one hundred inches = one foot



ENLARGED PLAN - GROUND FLOOR - PART 1
1/4" = 1'-0"

PROPOSED SOLUTION #1

ELIMINATE DRAIN

CASEWORK GENERAL NOTES

1. DO NOT SCALE DRAWINGS.
2. ELEVATIONS HAVE BEEN DRAWN FOR THE CASEWORK AND APPEAR ON DRAWINGS IN THE A-800 SERIES. REFER TO DRAWING A800 FOR TYPICAL CABINETS AND DETAILS. REFER TO PLANS, ENLARGED PLANS, AND ELEVATIONS FOR DIMENSIONS, QUANTITY, AND SPACING.
3. BASE UNITS, WALL CABINETS, AND SERVICE CHASE PANELS SHALL BE OF METAL OR WOOD CONSTRUCTION. 45° NOTED CABINET TYPES, CONFIGURATIONS, AND DIMENSIONS SHALL BE AS DETAIL ON CASEWORK ELEVATIONS. CASEWORK CONTRACTOR IS RESPONSIBLE FOR FIELD VERIFYING ALL DIMENSIONS BEFORE BEGINNING FABRICATION.
4. COUNTERTOPS AT LAB BENCHES AND TABLES SHALL BE EPOXY RESIN, SPECIFIED IN DIV. 12 (UNLESS OTHERWISE NOTED). REFER TO NOTES ON ENLARGED LAB PLANS AND/OR CASEWORK ELEVATIONS DRAWINGS AND SPECIFICATIONS FOR OTHER COUNTERTOP MATERIALS. PROVIDE 1/8" RADIUS ON OUTSIDE CORNERS. COUNTERTOPS TO OVERHANG BASE UNITS AND SERVICE PANELS BY 1".
5. REFER TO PLANS, ENLARGED PLANS AND ELEVATIONS FOR DEPTHS OF COUNTERTOPS.
6. BACK AND SIDE SPLASHES TO BE 1" THICK AND 1/2" HIGH (U.O.N.). MATERIAL TO MATCH COUNTERTOP. PROVIDE SIDE SPLASHES AT OXYGEN BURNER PARTITIONS, ADJACENT CASEWORK AND CABINETS, AND WHERE COUNTERTOPS ARE ADJACENT TO FUME HOODS.
7. SINKS SHALL BE MODIFIED EPOXY RESIN WITH SIZE AS INDICATED IN THE LEGEND, UNLESS OTHERWISE NOTED. SINKS SHALL BE IN SINK BASE UNITS. SINK COLOR TO BE COORDINATED WITH COUNTERTOP COLOR.
8. COORDINATE SIZE, LOCATION OF FAUCETS, AND SERVICE VALVES SO THAT THE FAUCET AND VALVE COMPONENTS DO NOT INTERFERE WITH EACH OTHER.
9. PROVIDE FINISHED CLOSURE PANELS AT EXPOSED END CONDITIONS.
10. PROVIDE FILLERS/CORNER PANELS AT WALLS AND COLUMN CONDITIONS, U.O.N.
11. INSTALL CLOSURE PANELS BETWEEN BACK OF CABINETS OR HOODS AND WALLS AT EXPOSED ENDS.
12. COORDINATE WITH REFLECTED CEILING PLANS FOR PROPER CEILING HEIGHTS AND PIPE DROP ENCLOSURE HEIGHTS/LOCATIONS.
13. CONTRACTOR TO COORDINATE THE INSTALLATION OF SUPPLEMENTARY FRAMING, BLOWING, AND BRACING OR SUPPORT OF ALL WALL MOUNTED AND CEILING MOUNTED ITEMS. COMPLY WITH DETAILS INDICATED OR IF NONE AVAILABLE, WITH "OXYGEN CONSTRUCTION HANDBOOK" PUBLISHED BY USGC. MINIMUM SIZE FOR BACKING IS 8" X 16" GA.
14. PROVIDE 3/8" DIAMETER PLASTIC GROMMET WHERE GROMMETS ARE INDICATED, UNLESS OTHERWISE NOTED.
15. PENETRATIONS THROUGH BENCH TOP SHALL BE SEALED WITH 100% SILICONE BASE SEALANT.
16. BACKS OF COUNTERTOPS AND SPLASHES AGAINST WALLS SHALL BE SEALED TO THE WALL WITH 100% SILICONE BASE SEALANT.
17. FREE STANDING SHELVING AND CASEWORK SHALL BE SECURED TO PREVENT TIPPING. SUBMIT SHOP DRAWINGS OF ATTACHMENT PRIOR TO INSTALLATION.
18. SAFETY SHOWER/EYE WASH UNITS SHALL COMPLY WITH AIA STANDARDS FOR USABILITY BY THE PHYSICALLY CHALLENGED. SAFETY SHOWER/EYE WASH UNITS SHALL BE FINISHED AND INSTALLED UNDER DIVISION 22.
19. FOR LABORATORY SERVICE FITTING TYPES, LOCATIONS AND ORDER, SEE ENLARGED PLANS. THESE FITTINGS ARE SPECIFIED IN DIVISION 12.
20. PROVIDE PLASTIC TRAY SHELF PROTECTORS AT ALL LAB BASE CABINETS BELOW FUME HOODS AND SINKS.
21. REFER TO THE EQUIPMENT LIST FOR OWNER FURNISHED/OWNER INSTALLED AND OWNER FURNISHED/CONTRACTOR INSTALLED EQUIPMENT.
22. WOOD CASEWORK BASE CABINET BASES TO BE MARINE GRADE PLYWOOD OR FIBERGLASS.
23. ALL DRAWERS AND DOORS ON ALL BASE CABINETS AND WALL CABINETS TO HAVE LOCKS. COORDINATE FINAL KEYING WITH OWNER.




SCIENTIFIC ABBREVIATIONS

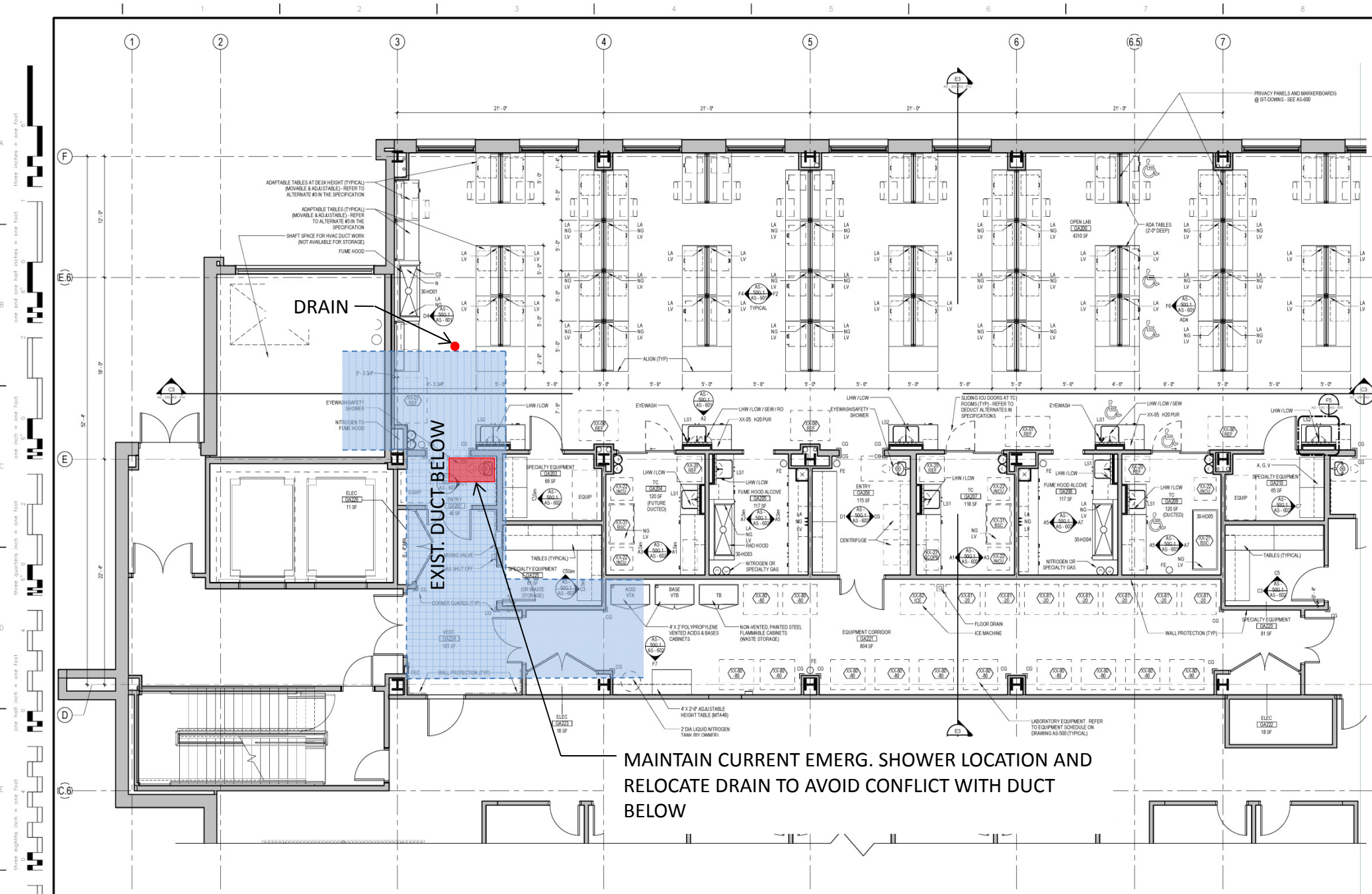
- CO2 = CARBON DIOXIDE
CW = COLD WATER
FE = FUME EXHAUST
N = NITROGEN
NG = LAB GAS (NATURAL GAS)
LA = LAB AIR (COMPRESSED)
LW = LAB COLD WATER
LWV = LAB HOT WATER
LV = LAB VACUUM
SEW = SAFETY EYE WASH
SGEN = SAFETY SHOWER AND SAFETY EYE WASH COMBINATION UNIT
RO = REVERSE OSMOSIS WATER
CG = CORNER GUARDS

SYMBOLS LEGEND

- ADJUSTABLE WALL (SHELVES 12" TYP. U.O.N.) OR WALL CABINETS. SEE CASEWORK ELEVATIONS.
CYLINDER RESTRAINT - (2, 3, OR 4 CYLINDERS PER PLAN). REFER TO DETAIL ON DRAWING A500. (CYLINDER BY OWNER)
DEWAR BUMPERS - REFER TO DETAIL ON DRAWING A500. (DEWAR BY OWNER)
FUME HOOD WITH DISHED EPOXY RESIN WORK SURFACE. PROVIDE LAB SERVICE OUTLETS AS INDICATED ON THE ENLARGED LAB PLANS. REFER TO CASEWORK ELEVATIONS FOR REGULAR OR ADA HEIGHT. REFER TO FUME HOOD DETAILS AND SPECIFICATIONS ON SHEET AS-415.
LAB EQUIPMENT - REFER TO LAB EQUIPMENT SCHEDULE ON DRAWING AS-500.
SAFETY SHOWER AND EYE WASH (SPECIFIED IN DIVISION 22). REFER TO DETAILS ON DRAWING AS-500.
PIPE DROP ENCLOSURE - REFER TO DETAILS.
HW / CW SPOUT
CW SPOUT
RD SPOUT (FIXED)
CAMERA
EPOXY RESIN SINK SINGLE BOWL (24" X 24" X 10" DEEP) (SEE SPEC DIVISION 12. REFER TO ENLARGED PLANS FOR SERVICES & LOCATIONS)
EPOXY RESIN SINKS DOUBLE BOWL (18" X 24" X 10" DEEP) SEE SPEC DIV 12. REFER TO ENLARGED PLANS FOR SERVICES AND LOCATIONS.
EPOXY RESIN SINKS DOUBLE BOWL (24" X 24" X 10" DEEP) SEE SPEC DIVISION 12. REFER TO ENLARGED PLANS FOR SERVICES AND LOCATIONS.
DESK CHAIR

KEY PLAN

CONSULTANTS:  Stantec Architecture and Engineering LLC 400 Morgan Center 101 E. Diamond Street Butler, PA 16011		ARCHITECT/ENGINEERS:  5700 Powell Grove Dr. Suite 100 Midlothian, Virginia 23112 (804) 222-2403 advetect.com A certified Service Disabled Veteran Owned Small Business (SDVOSB)		Approved: VAPHS Director Approved: Associate Director Approved: ACOS/IRMO	Approved: V.P. Facility Manager Approved: Manager Project Section Approved: Project Engineer	Drawing Title Enlarged Plan - Laboratory Ground Floor - Part 1 Scale: As indicated Building Number: 30 Drawn By: Checked By:	Project Title UNIVERSITY DRIVE RESEARCH OFFICE BUILDING WET LABS Location University Drive, Pittsburgh, PA 15240 Date: 4/30/2013 AutoCAD File Number:	Project Number 646-10-100 Contract Number VA244-P-1827 Drawing Number AS - 50G.1 Dwg. XXX of XXX	Office of Construction and Facilities Management 
--	--	---	--	---	--	--	---	---	---



ENLARGED PLAN - GROUND FLOOR - PART 1
1/4" = 1'-0"

PROPOSED SOLUTION #2

RELOCATE DRAIN

CASEWORK GENERAL NOTES

1. DO NOT SCALE DRAWINGS.
2. ELEVATIONS HAVE BEEN DRAWN FOR THE CASEWORK AND APPEAR ON DRAWINGS IN THE A-800 SERIES. REFER TO DRAWING A800 FOR TYPICAL CABINETS AND DETAILS. REFER TO PLANS, ENLARGED PLANS, AND ELEVATIONS FOR DIMENSIONS, QUANTITY, AND SPACING.
3. BASE UNITS, WALL CABINETS, AND SERVICE CHASE PANELS SHALL BE OF METAL OR WOOD CONSTRUCTION. 45° NOTED CABINET TYPES, CONFIGURATIONS, AND DIMENSIONS SHALL BE AS DETAIL ON CASEWORK ELEVATIONS. CASEWORK CONTRACTOR IS RESPONSIBLE FOR FIELD VERIFYING ALL DIMENSIONS BEFORE BEGINNING FABRICATION.
4. COUNTERTOPS AT LAB BENCHES AND TABLES SHALL BE EPOXY RESIN, SPECIFIED IN DIV. 12 (UNLESS OTHERWISE NOTED). REFER TO NOTES ON ENLARGED LAB PLANS AND/OR CASEWORK ELEVATIONS DRAWINGS AND SPECIFICATIONS FOR OTHER COUNTERTOP MATERIALS. PROVIDE 1/8" RADIUS ON OUTSIDE CORNERS. COUNTERTOPS TO OVERHANG BASE UNITS AND SERVICE PANELS BY 1".
5. REFER TO PLANS, ENLARGED PLANS AND ELEVATIONS FOR DEPTHS OF COUNTERTOPS.
6. BACK AND SIDE SPLASHES TO BE 1" THICK AND 2" HIGH (U.O.N.). MATERIAL TO MATCH COUNTERTOPS. PROVIDE SIDE SPLASHES AT OXYGEN BURNER PARTITIONS, ADJACENT CASEWORK AND CABINETS, AND WHERE COUNTERTOPS ARE ADJACENT TO FUME HOODS.
7. SINKS SHALL BE MODIFIED EPOXY RESIN WITH SIZE AS INDICATED IN THE LEGEND, UNLESS OTHERWISE NOTED. SINKS SHALL BE IN SINK BASE UNITS. SINK COLOR TO BE COORDINATED WITH COUNTERTOP COLOR.
8. COORDINATE SIZE, LOCATION OF FAUCETS, AND SERVICE VALVES SO THAT THE FAUCET AND VALVE COMPONENTS DO NOT INTERFERE WITH EACH OTHER.
9. PROVIDE FINISHED CLOSURE PANELS AT EXPOSED END CONDITIONS.
10. PROVIDE FILLERS/CORNER PANELS AT WALLS AND COLUMN CONDITIONS, U.O.N.
11. INSTALL CLOSURE PANELS BETWEEN BACK OF CABINETS OR HOODS AND WALLS AT EXPOSED ENDS.
12. COORDINATE WITH REFLECTED CEILING PLANS FOR PROPER CEILING HEIGHTS AND PIPE DROP ENCLOSURE HEIGHTS/LOCATIONS.
13. CONTRACTOR TO COORDINATE THE INSTALLATION OF SUPPLEMENTARY FRAMING, BLOWING, AND BRACING FOR SUPPORT OF ALL WALL MOUNTED AND CEILING MOUNTED ITEMS. COMPLY WITH DETAILS INDICATED OR IF NONE AVAILABLE, WITH "OXYGEN CONSTRUCTION HANDBOOK" PUBLISHED BY USGC. MINIMUM SIZE FOR BACKING IS 8" X 16" GA.
14. PROVIDE 3/8" DIAMETER PLASTIC GROMMET WHERE GROMMETS ARE INDICATED, UNLESS OTHERWISE NOTED.
15. PENETRATIONS THROUGH BENCH TOP SHALL BE SEALED WITH 100% SILICONE BASE SEALANT.
16. BACKS OF COUNTERTOPS AND SPLASHES AGAINST WALLS SHALL BE SEALED TO THE WALL WITH 100% SILICONE BASE SEALANT.
17. FREE STANDING SHELVING AND CASEWORK SHALL BE SECURED TO PREVENT TIPPING. SUBMIT SHOP DRAWINGS OF ATTACHMENT PRIOR TO INSTALLATION.
18. SAFETY SHOWER/EYE WASH UNITS SHALL COMPLY WITH ANSI STANDARDS FOR USABILITY BY THE PHYSICALLY CHALLENGED. SAFETY SHOWER/EYE WASH UNITS SHALL BE FINISHED AND INSTALLED UNDER DIVISION 22.
19. FOR LABORATORY SERVICE FITTING TYPES, LOCATIONS AND ORDER, SEE ENLARGED PLANS. THESE FITTINGS ARE SPECIFIED IN DIVISION 12.
20. PROVIDE PLASTIC TRAY SHELF PROTECTORS AT ALL LAB BASE CABINETS BELOW FUME HOODS AND SINKS.
21. REFER TO THE EQUIPMENT LIST FOR OWNER FURNISHED OWNER INSTALLED AND OWNER FURNISHED/CONTRACTOR INSTALLED EQUIPMENT.
22. WOOD CASEWORK BASE CABINET BASES TO BE MARINE GRADE PLYWOOD OR FIBERGLASS.
23. ALL DRAWERS AND DOORS ON ALL BASE CABINETS AND WALL CABINETS TO HAVE LOCKS. COORDINATE FINAL KEYING WITH OWNER.




SCIENTIFIC ABBREVIATIONS

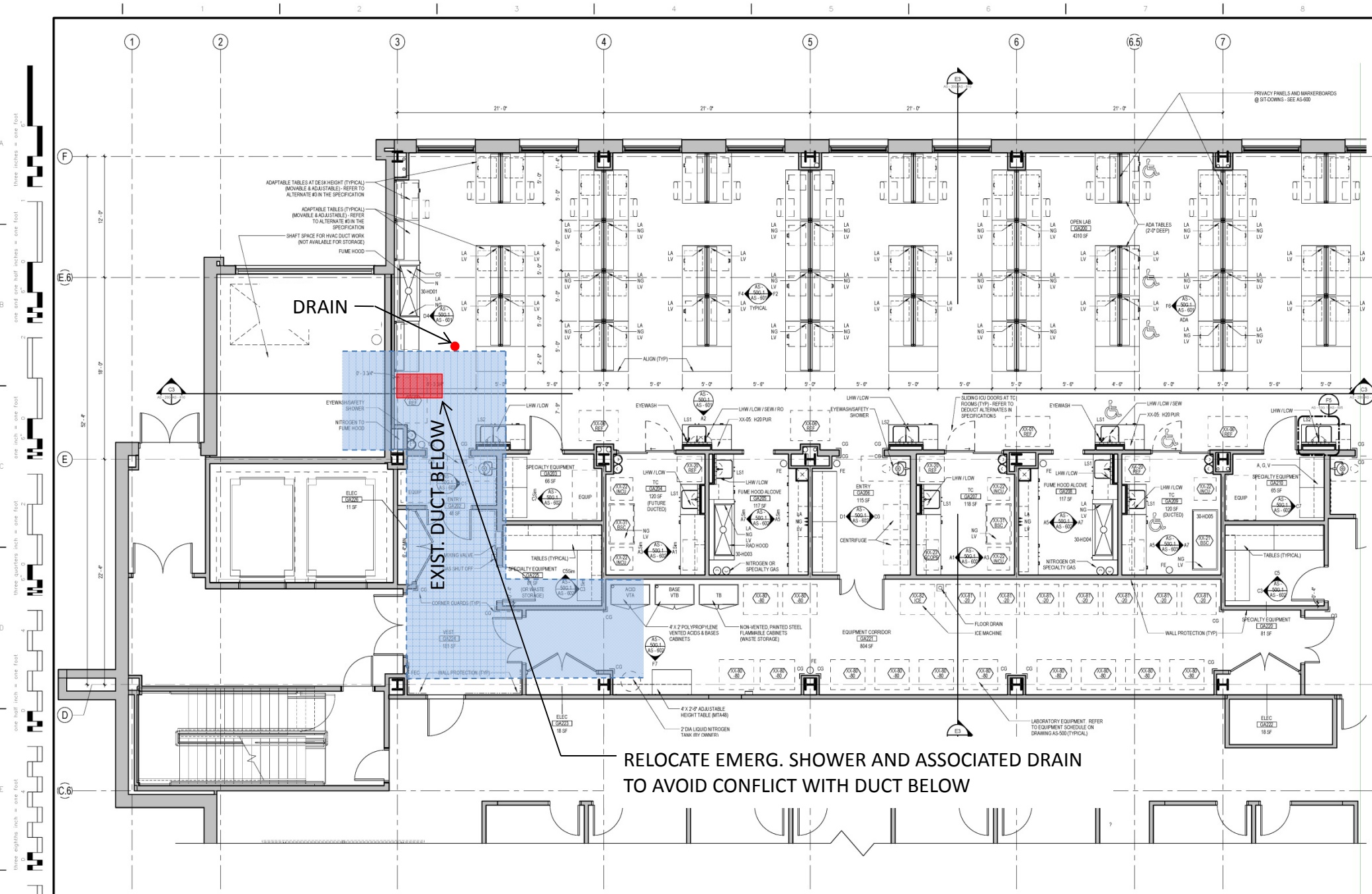
- CO2 = CARBON DIOXIDE
CW = COLD WATER
FE = FUME EXHAUST
N = NITROGEN
NG = LAB GAS (NATURAL GAS)
LA = LAB AIR (COMPRESSED)
LW = LAB COLD WATER
LWV = LAB HOT WATER
LV = LAB VACUUM
SEW = SAFETY EYE WASH
SGSW = SAFETY SHOWER AND SAFETY EYE WASH COMBINATION UNIT
RD = REVERSE OSMOSIS WATER
CG = CORNER GUARDS

SYMBOLS LEGEND

- ADJUSTABLE WALL SHELVE (2" DEEP U.O.N.) OR WALL CABINETS. SEE CASEWORK ELEVATIONS.
- CYLINDER RESTRAINT - (2, 3, OR 4 CYLINDERS PER PLAN). REFER TO DETAIL ON DRAWING A500. (CYLINDER BY OWNER)
- CYLINDER RESTRAINT - (2, 3, OR 4 CYLINDERS PER PLAN). REFER TO DETAIL ON DRAWING A500. (CYLINDER BY OWNER)
- DEWAR BUMPERS - REFER TO DETAIL ON DRAWING A500. (DEWAR BY OWNER)
- FUME HOOD WITH DISHED EPOXY RESIN WORK SURFACE. PROVIDE LAB SERVICE OUTLETS AS INDICATED ON THE ENLARGED LAB PLANS. REFER TO CASEWORK ELEVATIONS FOR REGULAR OR ADA HEIGHT. REFER TO FUME HOOD DETAILS AND SPECIFICATIONS ON SHEET AS-415.
- LAB EQUIPMENT - REFER TO LAB EQUIPMENT SCHEDULE ON DRAWING AS-500.
- SAFETY SHOWER AND EYE WASH (SPECIFIED IN DIVISION 22). REFER TO DETAILS ON DRAWING AS-500.
- PIPE DROP ENCLOSURE - REFER TO DETAILS.
- HW / CW SPOUT
- CW SPOUT
- RD SPOUT (FIXED)
- CAMERA
- L81
- L82
- L83
- DESK CHAIR

KEY PLAN

CONSULTANTS:  Stantec Architecture and Engineering LLC 400 Morgan Center 101 E. Diamond Street Butler, PA 16011		ARCHITECT/ENGINEERS:  ADVETECT 5700 Powell Grove Dr. Suite 100 Midlothian, Virginia 23112 (804) 282-2403 advetect.com A certified Service Disabled Veteran Owned Small Business (SDVOSB)		Approved: VAPHS Director Approved: Associate Director Approved: ACCSR/MD	Approved: V.P. Facility Manager Approved: Manager/Project Section Approved: Project Engineer	Drawing Title Enlarged Plan - Laboratory Ground Floor - Part 1 Scale: As indicated Building Number: 30 Drawn By: Checked By:	Project Title UNIVERSITY DRIVE RESEARCH OFFICE BUILDING WET LABS Location University Drive, Pittsburgh, PA 15240 Date: 4/30/2013 AutoCAD File Number:	Project Number 646-10-100 Contract Number VA244-P-1827 Drawing Number AS - 50G.1 Dwg. XXX of XXX	Office of Construction and Facilities Management 
--	--	---	--	--	--	--	---	---	---



ENLARGED PLAN - GROUND FLOOR - PART 1
1/4" = 1'-0"

PROPOSED SOLUTION #3A

RELOCATE EMERG. SHOWER AND DRAIN OPTION A

CASEWORK GENERAL NOTES

1. DO NOT SCALE DRAWINGS.
2. ELEVATIONS HAVE BEEN DRAWN FOR THE CASEWORK AND APPEAR ON DRAWINGS IN THE A-80 SERIES. REFER TO DRAWING A80 FOR TYPICAL CABINETS AND DETAILS. REFER TO PLANS, ENLARGED PLANS, AND ELEVATIONS FOR DIMENSIONS, QUANTITY, AND SPACING.
3. BASE UNITS, WALL CABINETS, AND SERVICE CHASE PANELS SHALL BE OF METAL OR WOOD CONSTRUCTION. 45° NOTED CABINET TYPES, CONFIGURATIONS, AND DIMENSIONS SHALL BE AS DETAIL ON CASEWORK ELEVATIONS. CASEWORK CONTRACTOR IS RESPONSIBLE FOR FIELD VERIFYING ALL DIMENSIONS BEFORE BEGINNING FABRICATION.
4. COUNTERTOPS AT LAB BENCHES AND TABLES SHALL BE EPOXY RESIN, SPECIFIED IN DIV. 12 (UNLESS OTHERWISE NOTED). REFER TO NOTES ON ENLARGED LAB PLANS AND CASEWORK ELEVATIONS DRAWINGS AND SPECIFICATIONS FOR OTHER COUNTERTOP MATERIALS. PROVIDE 1/8" RADIUS ON OUTSIDE CORNERS. COUNTERTOPS TO OVERHANG BASE UNITS AND SERVICE PANELS BY 1".
5. REFER TO PLANS, ENLARGED PLANS AND ELEVATIONS FOR DEPTHS OF COUNTERTOPS.
6. BACK AND SIDE SPLASHES TO BE 1" THICK AND 1/2" HIGH (U.O.N.). MATERIAL TO MATCH COUNTERTOPS. PROVIDE SIDE SPLASHES AT OXYGEN BURNER PARTITIONS, ADJACENT CASEWORK AND CABINETS, AND WHERE COUNTERTOPS ARE ADJACENT TO FUME HOODS.
7. SINKS SHALL BE MODIFIED EPOXY RESIN WITH SIZE AS INDICATED IN THE LEGEND, UNLESS OTHERWISE NOTED. SINKS SHALL BE IN SINK BASE UNITS. SINK COLOR TO BE COORDINATED WITH COUNTERTOP COLOR.
8. COORDINATE SIZE, LOCATION OF FAUCETS, AND SERVICE VALVES SO THAT THE FAUCET AND VALVE COMPONENTS DO NOT INTERFERE WITH EACH OTHER.
9. PROVIDE FINISHED CLOSURE PANELS AT EXPOSED END CONDITIONS.
10. PROVIDE FILLERS/CORNER PANELS AT WALLS AND COLUMN CONDITIONS, U.O.N.
11. INSTALL CLOSURE PANELS BETWEEN BACK OF CABINETS OR HOODS AND WALLS AT EXPOSED ENDS.
12. COORDINATE WITH REFLECTED CEILING PLANS FOR PROPER CEILING HEIGHTS AND PIPE DROP ENCLOSURE HEIGHTS/LOCATIONS.
13. CONTRACTOR TO COORDINATE THE INSTALLATION OF SUPPLEMENTARY FRAMING, BLOWING, AND BRACING FOR SUPPORT OF ALL WALL MOUNTED AND CEILING MOUNTED ITEMS. COMPLY WITH DETAILS INDICATED OR IF NONE AVAILABLE, WITH "OXYFUM CONSTRUCTION HANDBOOK" PUBLISHED BY USGC. MINIMUM SIZE FOR BACKING IS 8" X 16" GA.
14. PROVIDE 3/8" DIAMETER PLASTIC GROMMET WHERE GROMMETS ARE INDICATED, UNLESS OTHERWISE NOTED.
15. PENETRATIONS THROUGH BENCH TOP SHALL BE SEALED WITH 100% SILICONE BASE SEALANT.
16. BACKS OF COUNTERTOPS AND SPLASHES AGAINST WALLS SHALL BE SEALED TO THE WALL WITH 100% SILICONE BASE SEALANT.
17. FREE STANDING SHELVING AND CASEWORK SHALL BE SECURED TO PREVENT TIPPING. SUBMIT SHOP DRAWINGS OF ATTACHMENT PRIOR TO INSTALLATION.
18. SAFETY SHOWER/EYE WASH UNITS SHALL COMPLY WITH ANSI STANDARDS FOR USABILITY BY THE PHYSICALLY CHALLENGED. SAFETY SHOWER/EYE WASH UNITS SHALL BE FURNISHED AND INSTALLED UNDER DIVISION 22.
19. FOR LABORATORY SERVICE FITTING TYPES, LOCATIONS AND ORDER, SEE ENLARGED PLANS. THESE FITTINGS ARE SPECIFIED IN DIVISION 12.
20. PROVIDE PLASTIC TRAY SHELF PROTECTORS AT ALL LAB BASE CABINETS BELOW FUME HOODS AND SINKS.
21. REFER TO THE EQUIPMENT LIST FOR OWNER FURNISHED/OWNER INSTALLED AND OWNER FURNISHED/CONTRACTOR INSTALLED EQUIPMENT.
22. WOOD CASEWORK BASE CABINET BASES TO BE MARINE GRADE PLYWOOD OR FIBERGLASS.
23. ALL DRAWERS AND DOORS ON ALL BASE CABINETS AND WALL CABINETS TO HAVE LOCKS. COORDINATE FINAL KEYING WITH OWNER.




SCIENTIFIC ABBREVIATIONS

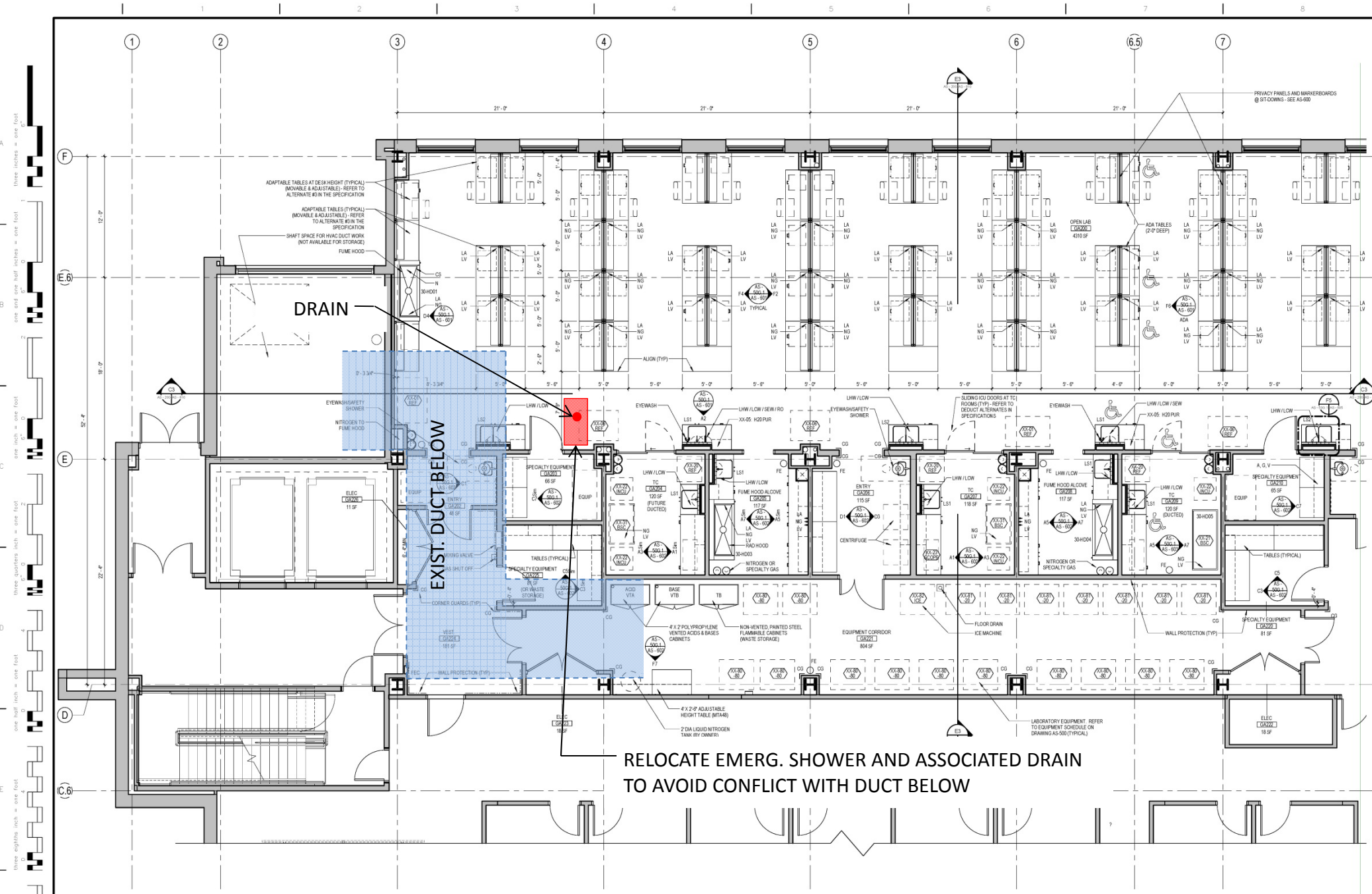
- CO2 = CARBON DIOXIDE
CW = COLD WATER
FE = FUME EXHAUST
N = NITROGEN
NG = LAB GAS (NATURAL GAS)
LA = LAB AIR (COMPRESSED)
LW = LAB COLD WATER
LWV = LAB HOT WATER
LV = LAB VACUUM
SEW = SAFETY EYE WASH
SGSW = SAFETY SHOWER AND SAFETY EYE WASH COMBINATION UNIT
RW = REVERSE OSMOSIS WATER
CG = CORNER GUARDS

SYMBOLS LEGEND

- ADJUSTABLE WALL SHELVE (2 TYP U.O.N.) OR WALL CABINETS. SEE CASEWORK ELEVATIONS.
CYLINDER RESTRAINT - (2, 3, OR 4 CYLINDERS PER PLAN). REFER TO DETAIL ON DRAWING A500. (CYLINDER BY OWNER)
CYLINDER RESTRAINT - (2, 3, OR 4 CYLINDERS PER PLAN). REFER TO DETAIL ON DRAWING A500. (CYLINDER BY OWNER)
DEWAR BUMPERS - REFER TO DETAIL ON DRAWING A500. (DEWAR BY OWNER)
FUME HOOD WITH DISHED EPOXY RESIN WORK SURFACE. PROVIDE LAB SERVICE OUTLETS AS INDICATED ON THE ENLARGED LAB PLANS. REFER TO CASEWORK ELEVATIONS FOR REGULAR OR ADA HEIGHT. REFER TO FUME HOOD DETAILS AND SPECIFICATIONS ON SHEET AS-415.
LAB EQUIPMENT - REFER TO LAB EQUIPMENT SCHEDULE ON DRAWING AS-500.
SAFETY SHOWER AND EYE WASH (SPECIFIED IN DIVISION 22). REFER TO DETAILS ON DRAWING AS-500.
PIPE DROP ENCLOSURE - REFER TO DETAILS.
HW / CW SPOUT
CW SPOUT
RD SPOUT (FIXED)
CAMERA
EPOXY RESIN SINK SINGLE BOWL (21" X 21" X 10" DEEP) (SEE SPEC DIVISION 12. REFER TO ENLARGED PLANS FOR SERVICES & LOCATIONS)
EPOXY RESIN SINKS DOUBLE BOWL (17" X 21" X 10" DEEP) SEE SPEC DIV 12. REFER TO ENLARGED PLANS FOR SERVICES AND LOCATIONS.
EPOXY RESIN SINKS DOUBLE BOWL (21" X 21" X 10" DEEP) SEE SPEC DIVISION 12. REFER TO ENLARGED PLANS FOR SERVICES AND LOCATIONS.
DESK CHAIR

KEY PLAN

CONSULTANTS:  Stantec Architecture and Engineering LLC 400 Morgan Center 101 E. Diamond Street Butler, PA 16011		ARCHITECT/ENGINEERS:  ADVETECT 5700 Powell Grove Dr. Suite 100 Midlothian, Virginia 23112 (804) 282-2403 advetect.com A certified Service Disabled Veteran Owned Small Business (SDVOSB)		Approved: VAPHS Director Approved: Associate Director Approved: ACCSR/MD	Approved: V.P. Facility Manager Approved: Manager/Project Section Approved: Project Engineer	Drawing Title Enlarged Plan - Laboratory Ground Floor - Part 1 Scale: As indicated Building Number: 30 Drawn By: Checked By:	Project Title UNIVERSITY DRIVE RESEARCH OFFICE BUILDING WET LABS Location University Drive, Pittsburgh, PA 15240 Date: 4/30/2013 AutoCAD File Number:	Project Number 646-10-100 Contract Number VA244-P-1827 Drawing Number AS - 50G.1 Dwg. XXX of XXX	Office of Construction and Facilities Management 
--	--	---	--	--	--	--	---	---	---



ENLARGED PLAN - GROUND FLOOR - PART 1
1/4" = 1'-0"

PROPOSED SOLUTION #3B

RELOCATE EMERG. SHOWER AND DRAIN OPTION B

CASEWORK GENERAL NOTES

1. DO NOT SCALE DRAWINGS.
2. ELEVATIONS HAVE BEEN DRAWN FOR THE CASEWORK AND APPEAR ON DRAWINGS IN THE A-800 SERIES. REFER TO DRAWING A800 FOR TYPICAL CABINETS AND DETAILS. REFER TO PLANS, ENLARGED PLANS, AND ELEVATIONS FOR DIMENSIONS, QUANTITY, AND SPACING.
3. BASE UNITS, WALL CABINETS, AND SERVICE CHASE PANELS SHALL BE OF METAL OR WOOD CONSTRUCTION. 45° NOTED CABINET TYPES, CONFIGURATIONS, AND DIMENSIONS SHALL BE AS DETAIL ON CASEWORK ELEVATIONS. CASEWORK CONTRACTOR IS RESPONSIBLE FOR FIELD VERIFYING ALL DIMENSIONS BEFORE BEGINNING FABRICATION.
4. COUNTERTOPS AT LAB BENCHES AND TABLES SHALL BE EPOXY RESIN, SPECIFIED IN DIV. 12 (UNLESS OTHERWISE NOTED). REFER TO NOTES ON ENLARGED LAB PLANS AND/OR CASEWORK ELEVATIONS DRAWINGS AND SPECIFICATIONS FOR OTHER COUNTERTOP MATERIALS. PROVIDE 1/8" RADIUS ON OUTSIDE CORNERS. COUNTERTOPS TO OVERHANG BASE UNITS AND SERVICE PANELS BY 1".
5. REFER TO PLANS, ENLARGED PLANS AND ELEVATIONS FOR DEPTHS OF COUNTERTOPS.
6. BACK AND SIDE SPLASHES TO BE 1" THICK AND 2" HIGH (U.O.N.). MATERIAL TO MATCH COUNTERTOPS. PROVIDE SIDE SPLASHES AT OXYGEN BURNER PARTITIONS, ADJACENT CASEWORK AND CABINETS, AND WHERE COUNTERTOPS ARE ADJACENT TO FUME HOODS.
7. SINKS SHALL BE MODIFIED EPOXY RESIN WITH SIZE AS INDICATED IN THE LEGEND, UNLESS OTHERWISE NOTED. SINKS SHALL BE IN SINK BASE UNITS. SINK COLOR TO BE COORDINATED WITH COUNTERTOP COLOR.
8. COORDINATE SIZE, LOCATION OF FAUCETS, AND SERVICE VALVES SO THAT THE FAUCET AND VALVE COMPONENTS DO NOT INTERFERE WITH EACH OTHER.
9. PROVIDE FINISHED CLOSURE PANELS AT EXPOSED END CONDITIONS.
10. PROVIDE FILLERS/CORNER PANELS AT WALLS AND COLUMN CONDITIONS, U.O.N.
11. INSTALL CLOSURE PANELS BETWEEN BACK OF CABINETS OR HOODS AND WALLS AT EXPOSED ENDS.
12. COORDINATE WITH REFLECTED CEILING PLANS FOR PROPER CEILING HEIGHTS AND PIPE DROP ENCLOSURE HEIGHTS (LOCATIONS).
13. CONTRACTOR TO COORDINATE THE INSTALLATION OF SUPPLEMENTARY FRAMING, BLOWING, AND BRACING OR SUPPORT OF ALL WALL MOUNTED AND CEILING MOUNTED ITEMS. COMPLY WITH DETAILS INDICATED OR IF NONE AVAILABLE, WITH "OXYFUM CONSTRUCTION HANDBOOK" PUBLISHED BY USGC. MINIMUM SIZE FOR BACKING IS 8" X 16" GA.
14. PROVIDE 3/8" DIAMETER PLASTIC GROMMET WHERE GROMMETS ARE INDICATED, UNLESS OTHERWISE NOTED.
15. PENETRATIONS THROUGH BENCH TOP SHALL BE SEALED WITH 100% SILICONE BASE SEALANT.
16. BACKS OF COUNTERTOPS AND SPLASHES AGAINST WALLS SHALL BE SEALED TO THE WALL WITH 100% SILICONE BASE SEALANT.
17. FREE STANDING SHELVING AND CASEWORK SHALL BE SECURED TO PREVENT TIPPING. SUBMIT SHOP DRAWINGS OF ATTACHMENT PRIOR TO INSTALLATION.
18. SAFETY SHOWER/EYE WASH UNITS SHALL COMPLY WITH ANSI STANDARDS FOR USABILITY BY THE PHYSICALLY CHALLENGED. SAFETY SHOWER/EYE WASH UNITS SHALL BE FINISHED AND INSTALLED UNDER DIVISION 22.
19. FOR LABORATORY SERVICE FITTING TYPES, LOCATIONS AND ORDER, SEE ENLARGED PLANS. THESE FITTINGS ARE SPECIFIED IN DIVISION 12.
20. PROVIDE PLASTIC TRAY SHELF PROTECTORS AT ALL LAB BASE CABINETS BELOW FUME HOODS AND SINKS.
21. REFER TO THE EQUIPMENT LIST FOR OWNER FURNISHED/OWNER INSTALLED AND OWNER FURNISHED/CONTRACTOR INSTALLED EQUIPMENT.
22. WOOD CASEWORK BASE CABINET BASES TO BE MARINE GRADE PLYWOOD OR FIBERGLASS.
23. ALL DRAWERS AND DOORS ON ALL BASE CABINETS AND WALL CABINETS TO HAVE LOCKS. COORDINATE FINAL KEYING WITH OWNER.



SCIENTIFIC ABBREVIATIONS

- CO2 = CARBON DIOXIDE
CW = COLD WATER
FE = FUME EXHAUST
N = NITROGEN
NG = LAB GAS (NATURAL GAS)
LA = LAB AIR (COMPRESSED)
LW = LAB COLD WATER
LWV = LAB HOT WATER
LV = LAB VACUUM
SEW = SAFETY EYE WASH
SGEN = SAFETY SHOWER AND SAFETY EYE WASH COMBINATION UNIT
RW = REVERSE OSMOSIS WATER
CG = CORNER GUARDS

SYMBOLS LEGEND

- ADJUSTABLE WALL SHELVE (2 TYP U.O.N.) OR WALL CABINETS. SEE CASEWORK ELEVATIONS.
CYLINDER RESTRAINT - (2, 3, OR 4 CYLINDERS PER PLAN). REFER TO DETAIL ON DRAWING A500. (CYLINDER BY OWNER)
CYLINDER RESTRAINT - (2, 3, OR 4 CYLINDERS PER PLAN). REFER TO DETAIL ON DRAWING A500. (CYLINDER BY OWNER)
DEWAR BUMPERS - REFER TO DETAIL ON DRAWING A500. (DEWAR BY OWNER)
FUME HOOD WITH DISHED EPOXY RESIN WORK SURFACE. PROVIDE LAB SERVICE OUTLETS AS INDICATED ON THE ENLARGED LAB PLANS. REFER TO CASEWORK ELEVATIONS FOR REGULAR OR ADA HEIGHT. REFER TO FUME HOOD DETAILS AND SPECIFICATIONS ON SHEET AS-415.
LAB EQUIPMENT - REFER TO LAB EQUIPMENT SCHEDULE ON DRAWING AS-500.
SAFETY SHOWER AND EYE WASH (SPECIFIED IN DIVISION 22). REFER TO DETAILS ON DRAWING AS-500.
PIPE DROP ENCLOSURE - REFER TO DETAILS.
HW / CW SPOUT
CW SPOUT
RD SPOUT (FIXED)
CAMERA
EPOXY RESIN SINK SINGLE BOWL (21" X 21" X 10" DEEP) (SEE SPEC DIVISION 12. REFER TO ENLARGED PLANS FOR SERVICES & LOCATIONS).
EPOXY RESIN SINKS DOUBLE BOWL (17" X 21" X 10" DEEP) SEE SPEC DIV 12. REFER TO ENLARGED PLANS FOR SERVICES AND LOCATIONS.
EPOXY RESIN SINKS DOUBLE BOWL (21" X 21" X 10" DEEP) SEE SPEC DIVISION 12. REFER TO ENLARGED PLANS FOR SERVICES AND LOCATIONS.
DESK CHAIR

KEY PLAN

CONSULTANTS:  Stantec Architecture and Engineering LLC 400 Morgan Center 101 E Diamond Street Butler, PA 16011		ARCHITECT/ENGINEERS:  ADVETECT 5700 Powell Grove Dr. Suite 100 Midlothian, Virginia 23112 (804) 282-2403 advetect.com A certified Service Disabled Veteran Owned Small Business (SDVOSB)		Approved: VAPHS Director Approved: Associate Director Approved: ACCSR/MD	Approved: V.P. Facility Manager Approved: Manager Project Section Approved: Project Engineer	Enlarged Plan - Laboratory Ground Floor - Part 1 Scale: As indicated Building Number: 30 Drawing Title: Enlarged Plan - Laboratory Ground Floor - Part 1	Project Title: UNIVERSITY DRIVE RESEARCH OFFICE BUILDING WET LABS Location: University Drive, Pittsburgh, PA 15240 Date: 4/30/2013 Drawing Number: VA244-P-1827 Dwg. XXX of XXX	Office of Construction and Facilities Management Department of Veterans Affairs
---	--	---	--	--	--	---	---	--