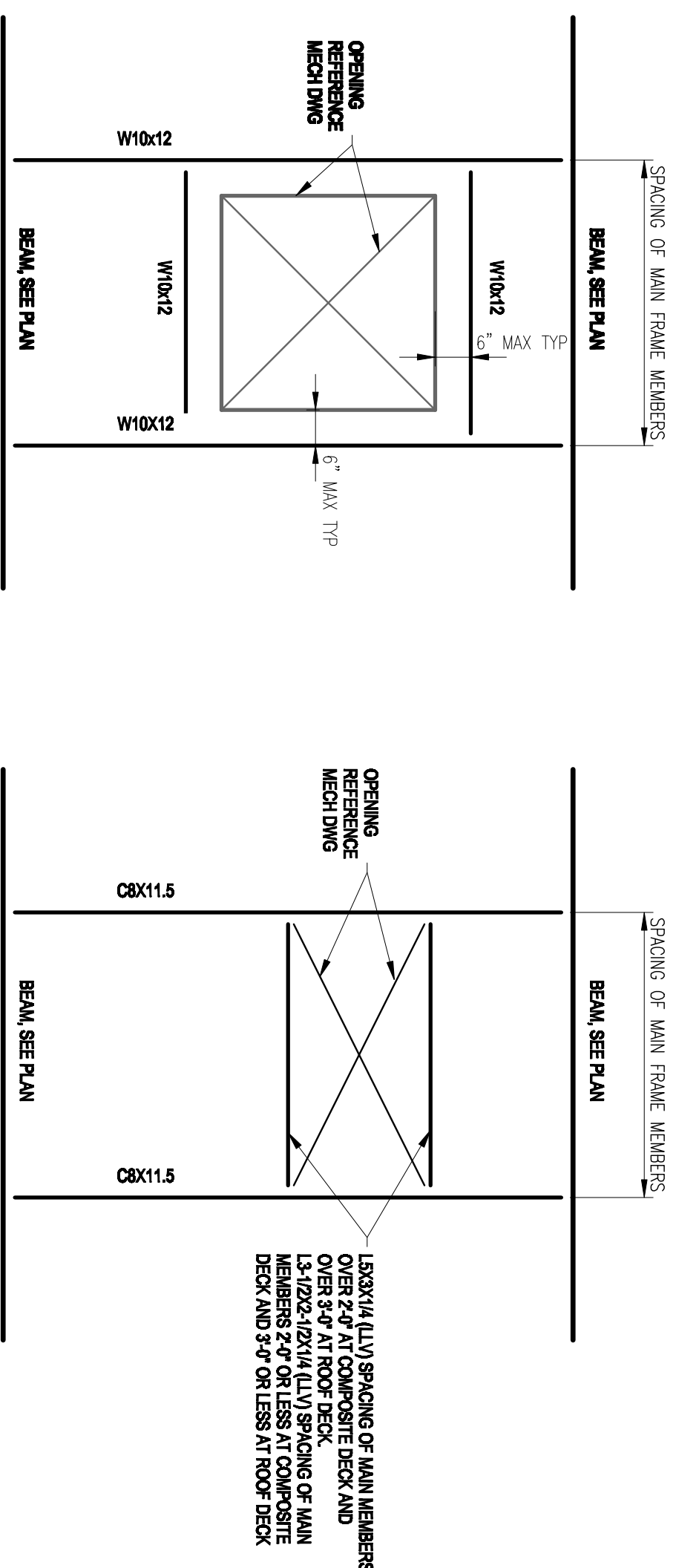


SCHEDULE A - SHEAR PLATES			
BEAM SIZE	PLATE THICKNESS	WELD SIZE	NUMBER OF BOLTS
W8	1/4"	3/8"	2
W10	1/4"	3/8"	2
W12	1/4"	3/8"	3
W14	1/4"	3/8"	3
W16	1/4"	3/8"	4
W18	3/8"	3/8"	5

SCHEDULE B - DOUBLE ANGLES			
BEAM SIZE	ANGLE THICKNESS	WELD SIZE	NUMBER OF BOLTS
W8	5/16"	3/8"	2
W10	5/16"	3/8"	2
W12	5/16"	3/8"	3
W14	5/16"	3/8"	3
W16	5/16"	3/8"	4
W18	5/16"	3/8"	5

## 1 TYPICAL FRAMED BEAM CONNECTION



1. PROVIDE W/10 RAISED OPENING AS INDICATED ABOVE FOR OPENINGS WITH ANY DIMENSION GREATER THAN 30"
2. PROVIDE W/10 FLALED OPENING AT ADJACENT FLOOR OPENINGS WITH A COMBINED DIMENSION GREATER THAN 30"
3. AT MULTIPLE ADJACENT OPENINGS LESS THAN 6" PROVIDE MINIMUM 6" CLEAR BETWEEN OPENINGS OR CONSIDER AS OPENING OF WIDTH EQUAL TO OVERALL WIDTH FROM OUTSIDE FACES OF OPENINGS.

1. PROVIDE TRIMMED OPENING AS INDICATED ABOVE FOR OPENING WIDTH LESS THAN 30". IF OPENING WIDTH IS LESS THAN 10" IN EACH DIRECTION, NO REINFORCEMENT IS REQUIRED.
2. OPENINGS SHALL NOT BE PLACED CLOSER THAN OPENING WIDTH OR DIAMETER TO ANY BEAM.
3. AT MULTIPLE OPENINGS LESS THAN 6" PROVIDE MINIMUM 6" CLEAR BETWEEN OPENINGS OR CONSIDER AS OPENING OF WIDTH EQUAL TO OVERALL WIDTH FROM OUTSIDE FACES OF OPENINGS.

## 2 TYPICAL ROOF AND COMPOSITE FLOOR OPENING DETAIL

[illegible]