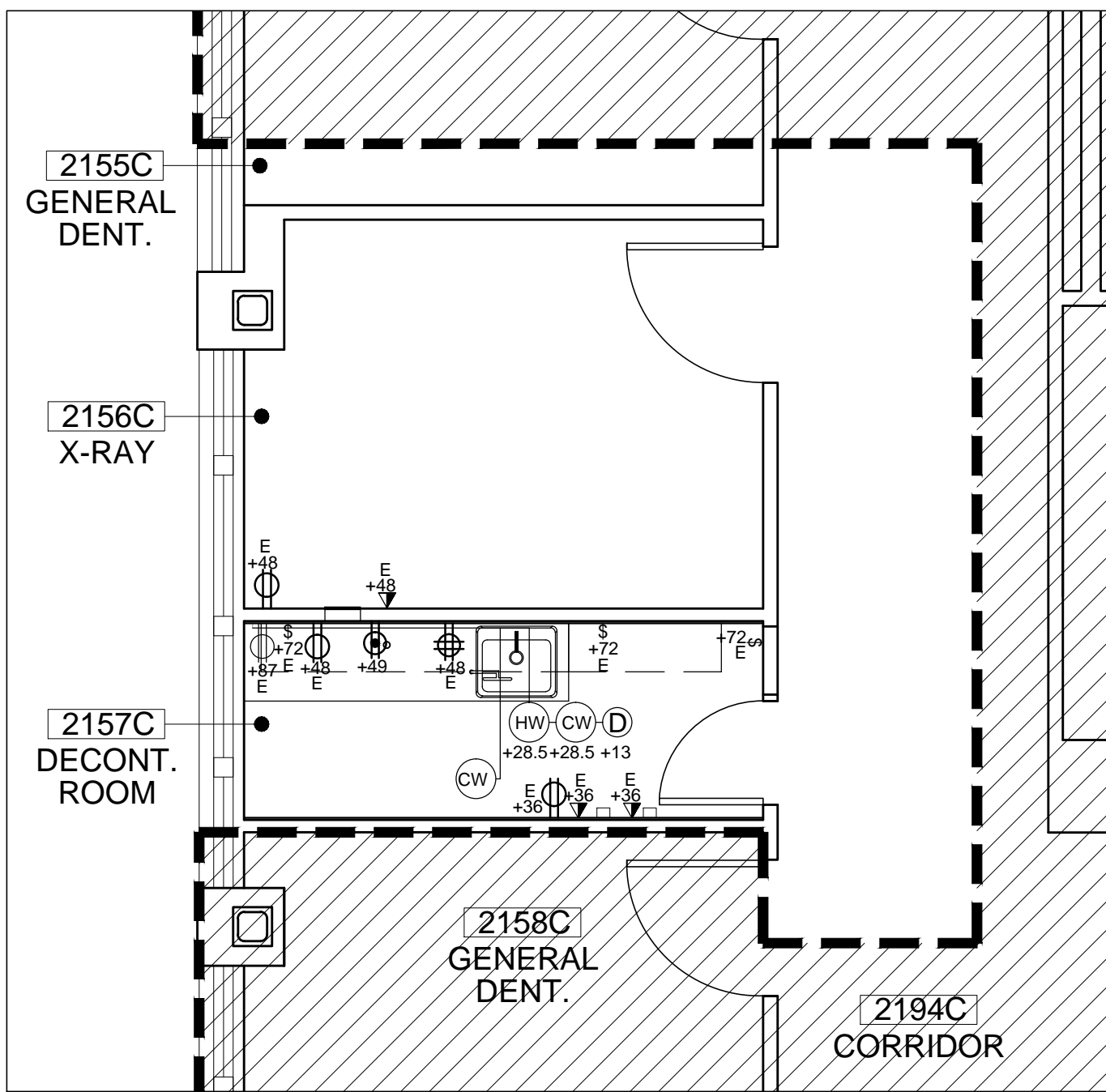
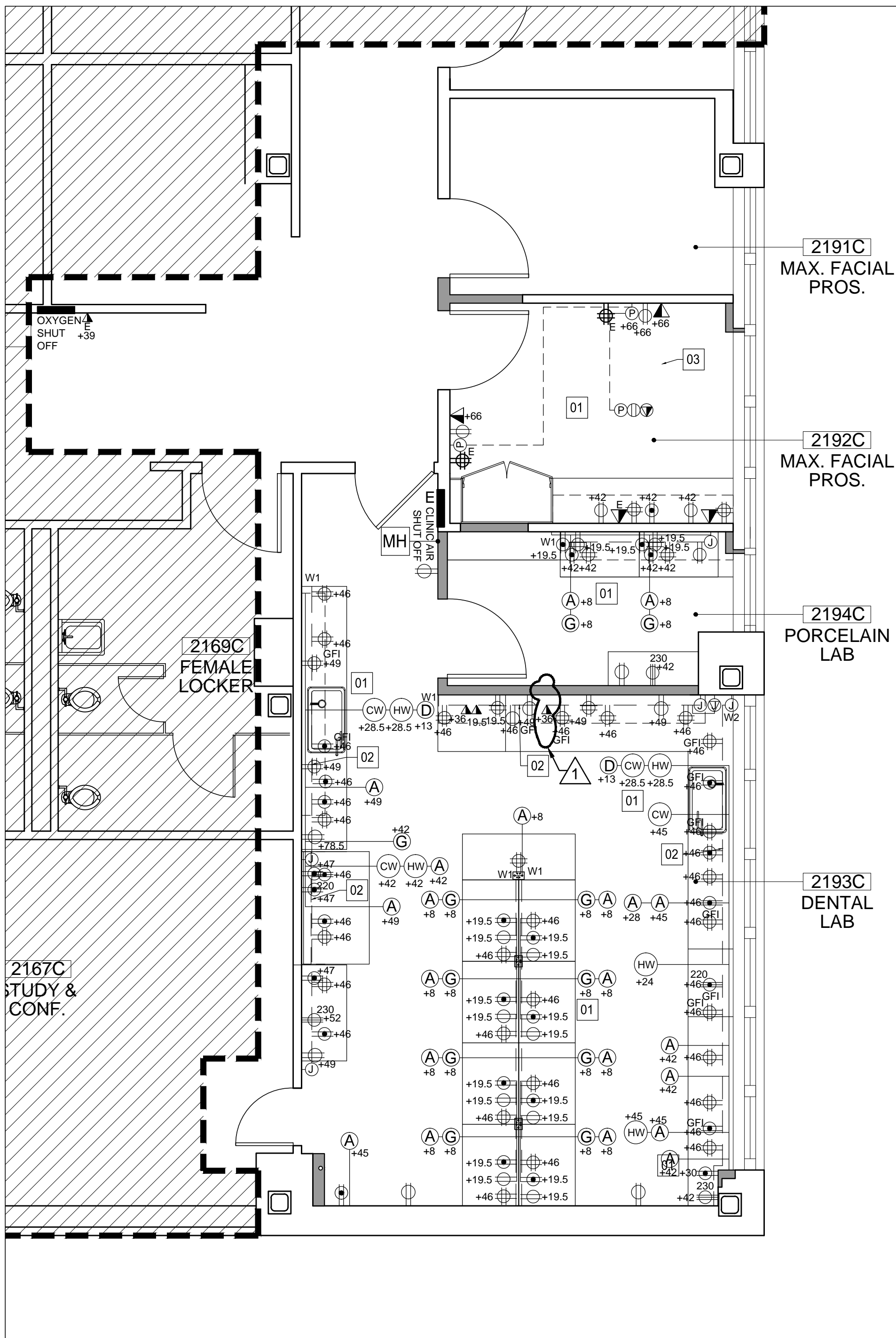


three inches = one foot  
one and one half inches = one foot  
one inch = one foot  
three quarters inch = one foot  
one half inch = one foot  
three eighths inch = one foot  
one quarter inch = one foot  
one eighth inch = one foot

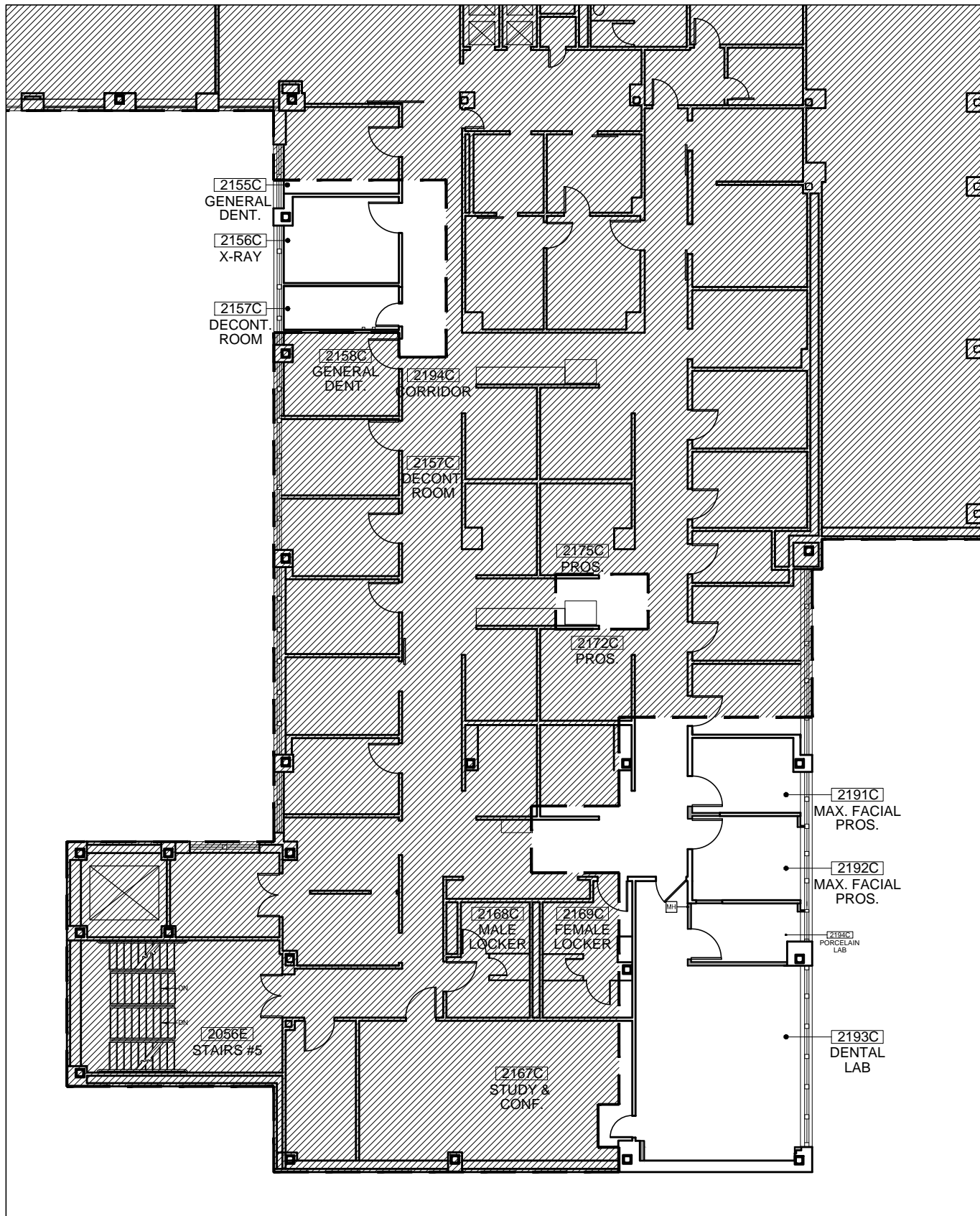


1 POWER AND COMMUNICATION PLAN  
SCALE: 1/4"=1'-0"



NOTES:  
1. SEE A-17 FOR LEGENDS.

2 POWER AND COMMUNICATION PLAN  
SCALE: 1/4"=1'-0"



3 KEY PLAN  
SCALE: 1/16"=1'-0"

Revisions	Date
A. AMENDMENT #1	08.29.13

#### CONSULTANTS:

Insight Environmental, Inc.  
74 East Main Street  
Suite 1  
Patchogue, NY 11772  
PH: 631.654.2780  
FAX: 631.654.2781

#### SCOPE LEGEND:

- CONTRACT LIMIT
- EXISTING TO REMAIN
- EXISTING TO BE RENOVATED

#### ARCHITECT/ENGINEERS:

BAM Studio  
Second Floor  
415 W. Broadway  
New York, NY 10012  
PH: 646.522.5550  
FAX: 646.349.5556

me  
engineers

M-E Engineers  
29 W. 38th street, 5th floor  
new york, ny 10018  
t 212.447.6770 / f 212.447.6615  
www.me-engineers.com

#### Drawing Title

2nd Floor Power and Communication Plan

#### Approved

Division Chief

#### Project Title

Dental Lab Renovations

#### Location

New York Harbor Healthcare System  
Manhattan Campus, New York, NY

#### Date

08.29.13

#### Checked

DA

#### Drawn

GN

#### Project Number

630-09-103

#### Building Number

I

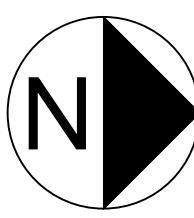
#### Drawing Number

A-23

Dwg. 23 of 47

Office of  
Construction  
and Facilities  
Management

Department of  
Veterans Affairs



FULLY SPRINKLERED