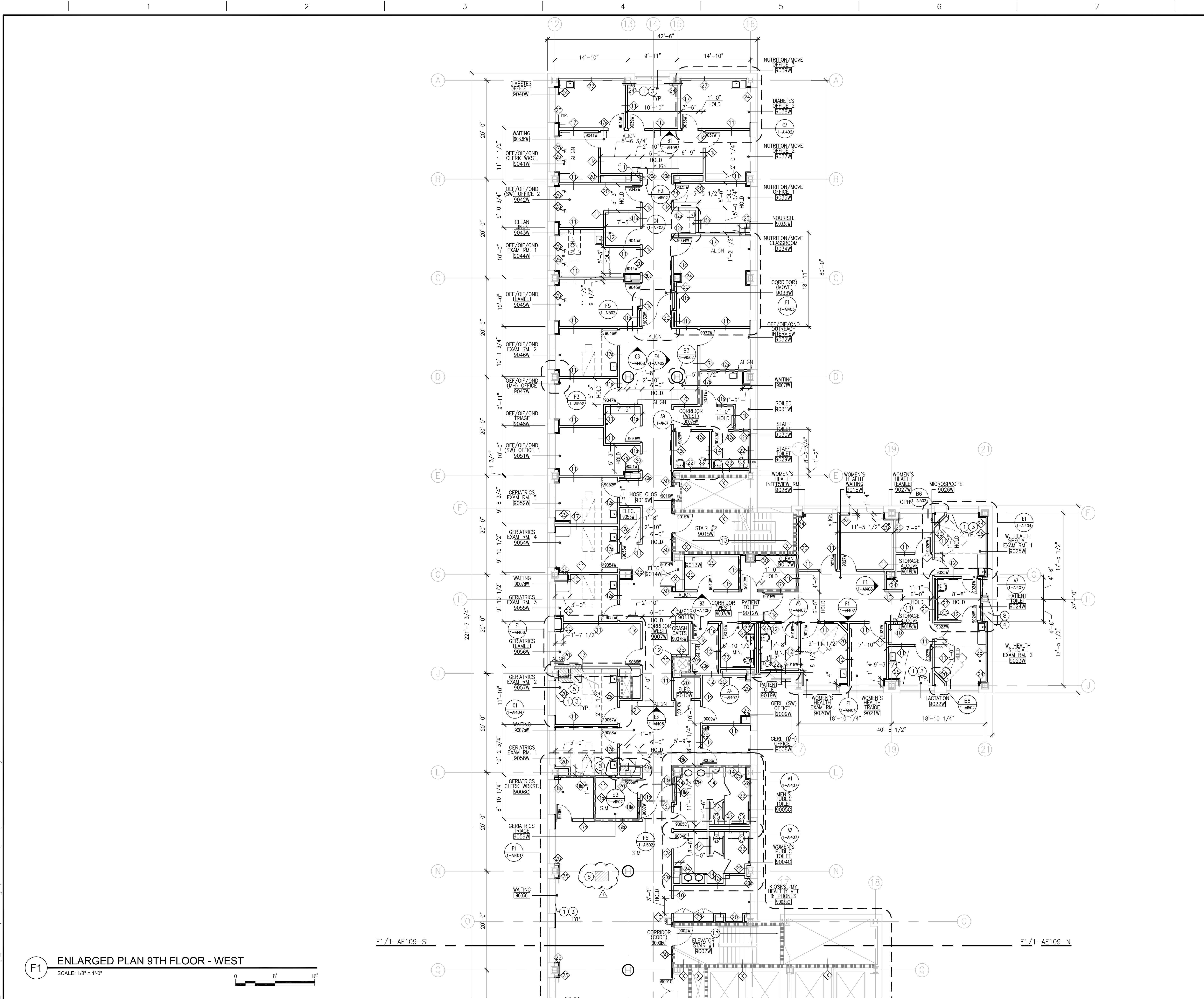


three inches = one foot  
one and one half inches = one foot  
one inch = one foot  
three quarters inch = one foot  
one half inch = one foot  
three eighths inch = one foot  
one quarter inch = one foot  
one eighth inch = one foot  
one sixteenth inch = one foot



PARTITION FIRE RATING  
LEGEND

1 HOUR FIRE

SMOKE BARRIER (1 HOUR FIRE)

2 HOUR FIRE BARRIER

CONSTRUCTION  
PLAN LEGEND

EXISTING CONSTRUCTION  
TO REMAIN

NEW CONSTRUCTION

EXISTING PERIMETER  
WINDOW TO REMAIN

EXISTING DOOR ASSEMBLY  
TO REMAIN

NEW DOOR ASSEMBLY

CURTAIN TRACK  
(CEILING MOUNTED)

MATCH LINE

GENERAL  
CONSTRUCTION NOTES

1. ALL DIMENSIONS ARE TO FINISHED FACE OF PARTITION UNLESS NOTED OTHERWISE.

2. ALL DIMENSIONS SHOWN IN RENOVATED AREAS ARE TO BE VERIFIED IN THE FIELD BEFORE PROCEEDING WITH WORK.

3. WHERE A FIXED RATED PARTITION IS SHOWN ABUTTING EXTERIOR WALLS, THE FIRE RATED ASSEMBLY IS TO EXTEND TO THE EXTERIOR WALL CONSTRUCTION.

4. IN ALL ROOMS BELOW AREAS WHICH RECEIVE UNDER FLOOR SERVICES, REMOVE A PORTION OF EXISTING CEILING AS REQUIRED. PATCH FINISHES TO MATCH EXISTING OR AS INDICATED ON ROOM FINISH SCHEDULE.

5. REFER TO M.E.P. DRAWINGS FOR EXISTING AND NEW FIXTURES AND SERVICES TO BE REMOVED AND/OR INSTALLED. EXISTING FINISHES DISTURBED BY THIS WORK SHALL BE PATCHED TO MATCH ADJACENT UNDISTURBED FINISHES.

6. WHENEVER EXISTING EQUIPMENT, PIPING, DUCTS, ETC ARE REQUIRED TO BE REMOVED, SUCH REMOVAL SHALL INCLUDE ALL ANCHORS, HANGERS, ETC. AFTER REMOVAL, FLOORS, WALLS AND CEILINGS SHALL BE FINISHED TO MATCH ADJOINING SURFACES OR AS INDICATED ON ROOM FINISH SCHEDULE.

7. FIRESTOP W/ ALL APPROVED SYSTEMS. ALL PENETRATIONS THROUGH NEW & EXISTING RATED CONSTRUCTION, FIRESTOP AT ALL OPENINGS RESULTING FROM THE RENOVATIONS OF EXISTING MEP SYSTEMS. SEE MECHANICAL, ELECTRICAL, PLUMBING & FIRE PROTECTION DRAWINGS TO DETERMINE FULL SCOPE OF WORK. REFER TO C5/1-AE501 AND SCHEDULE OF THROUGH PENETRATION FIRESTOP SYSTEMS ON DRAWING T-AE501 FOR PENETRATION FIRESTOPPING REQUIREMENTS. CONTRACTOR TO MAINTAIN THE INTEGRITY OF THE RATED ASSEMBLY AT ALL PENETRATIONS THROUGH THAT ASSEMBLY.

8. EXAM TABLES ARE DASHED AND SHOWN FOR REFERENCE AND COORDINATION ONLY.

9. REFER TO A00 DRAWING SERIES FOR FURNITURE AND EQUIPMENT PLANS FOR REFERENCE AND COORDINATION. PROVIDE BLOCKING AT ALL EQUIPMENT AND ACCESSORIES, REFER TO DETAIL E6/1-A504.

10. UNDERCUT ALL DOORS TO CLEAR NEW FLOOR FINISHES. FOR ADDITIONAL INFORMATION REFER TO DOOR SCHEDULE ON SHEETS 1-AE03 AND 1-AE04.

11. CHOP AROUND ABANDONED EXISTING CONDUIT AND PIPES TO THE TOP OF THE STRUCTURAL SLAB. CUT CONDUITS AND PIPES AT THE TOP OF STRUCTURAL SLAB AND SEAL WITH FIRESEALING BACKFILL VOID WITH LIGHT WEIGHT CONCRETE.

12. BACKFILL WITH LIGHT WEIGHT CONCRETE ALL VOIDS TOPPING SLAB RESULTING FROM REMOVAL OF PARTITIONS, SHOWER PANS AND OTHER REMOVALS.

13. FLOAT ENTIRE SLAB WITH HYDRAULIC CEMENT UNDERLAYMENT. PROVIDE BONDING AGENT.

14. REPAIR ALL DAMAGED PERIMETER WINDOWS AND ALL ASSOCIATED HARDWARE AND MECHANISMS FOR WINDOW TO FUNCTION PROPERLY. WHERE MISSING, PROVIDE OPENING RESTRICTORS TO MATCH EXISTING. AT LOCATIONS WHERE WINDOW IS BOLTED, REMOVE BOLTED ASSEMBLY. SEAL AND REPAIR WINDOWS AND MECHANISMS AS NECESSARY FOR PROPER WINDOW OPERATION. REPAIR AND/OR REPLACE ALL PERIMETER WINDOW BLINDS AND ALL ASSOCIATED MECHANISMS TO FUNCTION PROPERLY. CLEAN ALL GLASS.

15. REFER TO DETAIL SECTION 1-AE501 AND 1-AE502 AND SEISMIC DESIGN PARAMETERS LISTED ON SHEET 1-SJ001 FOR ALL SEISMIC BRACING REQUIREMENTS.

16. ALL INTERIOR PARTITIONS THAT STOP ABOVE THE CEILING TO BE BRACED TO THE SLAB ABOVE.

17. ALL LOOSE CONCRETE MATERIAL AROUND BEAMS AND/OR COLUMNS TO BE REMOVED. ALL BARE STRUCTURAL STEEL TO BE FIREPROOFED. ALL CRACKS TO BE FILLED WITH NON-SHRINK GROUT.

18. ALIGN THE FACE OF AN INTERIOR PARTITION WITH THE EDGE OF THE WINDOW JAMB AT LOCATIONS WHERE THE INTERIOR PARTITION MEETS THE EXTERIOR WALL ASSEMBLY, UNLESS OTHERWISE NOTED.

SPECIFIC  
CONSTRUCTION NOTES

1. AT THE INTERIOR FACE OF WALL ALONG THE PERIMETER PROVIDE FRAMING AS SCHEDULED WITH TYPE X GYPSUM BOARD AND INSULATION.

2. PROVIDE NEW LOUVER. REFER TO F3/1-A506.

3. PROVIDE NEW CONNECTOR ENCLOSURE AND WINDOW SILL. REFER TO DETAIL F8/1-A506.

4. NEW CONCRETE CURB. ALIGN NEW CURB WITH EXISTING COLUMN ENCLOSURE IN PLAN. MATCH HEIGHT TO EXISTING ADJACENT CONCRETE CURB HEIGHT. REFER TO DETAIL F8/1-SJ001.

5. NEW SLAB INFILL. REFER TO DETAIL E6/1-SJ001.

6. REPAIR EXISTING CONCRETE SLAB. REFER TO DETAIL C8/1-SJ001.

7. NEW MECHANICAL SHAFT INFILL. REFER TO DETAIL E8/1-SJ001. COORDINATE WITH MECHANICAL DWGS.

8. EXISTING CONCRETE CURB TO REMAIN.

9. PROVIDE AND INSTALL EXTENSION BACK BOXES FOR ALL ELEVATOR CALL BUTTON ASSEMBLIES AND CALL LIGHTS, AND EXTEND CONDUIT AND POWER TO BE FLUSH WITH NEW FACE OF ELEVATOR WALL.

10. NEW SECURITY GRILLE. REFER TO B1/1-A502 AND C1/1-A503.

11. NEW FIRE EXTINGUISHER CABINET. REFER TO SHEET 1-A502 FOR DETAILS.

12. NEW WALL ACCESS PANEL. REFER TO B8/1-A503.

13. AT 9TH FLOOR, PAINT ALL EXPOSED PIPING WITH NEW COAT OF PAINT TO MATCH EXISTING. SPRINKLER PIPING TO BE PAINTED RED.

14. EXISTING FIRE ALARM PANEL TO REMAIN.

15. NEW 4" HOUSEKEEPING PADS. COORDINATE LOCATION W/ MECHANICAL DWGS. REFER TO DETAIL F8/1-SJ001.

16. NEW DRINKING FOUNTAIN (SEE PLUMBING DWGS).

17. NEW RADIATOR ENCLOSURE. REFER TO DETAIL F1/1-A506.

18. NEW FIN TUBE ENCLOSURE. REFER TO DETAIL B8/1-A506.

19. NEW 2HR RATED SLAB INFILL WITH OPENING FOR DUCTWORK. SEE MECHANICAL DWG T-MH401 FOR ADDITIONAL INFORMATION INCLUDING FIRE DAMPER.

20. PROVIDE ACCESS PANEL IN NEW PARTITION FOR EXISTING ELECTRICAL WIRE WAY. REFER TO ELECTRICAL DRAWINGS FOR ADDITIONAL INFORMATION. COORDINATE EXACT SIZE /LOCATION WITH EXISTING EQUIPMENT.

21. PROVIDE 2 HOUR RATED ACCESS PANEL IN EXISTING PARTITION. CONTRACTOR TO VERIFY EXACT SIZE IN FIELD.

BUILDING IS FULLY SPRINKLERED

Scale: 1/8"=1'-0"

CONSULTANTS:		KEY PLAN:		ARCHITECT/ENGINEERS:		Drawing Title		Project Title		Project Number		Office of Construction & Facilities Management  VA U.S. Department of Veterans Affairs		
ASBESTOS ABATEMENT CONSULTANT: <b>Egan Environmental Consulting, Inc.</b> 14 HIGH STREET MAHAH, NEW JERSEY 07430 Tel: (201) 848-7790 Fax: (201) 848-7791				<b>CANNON</b> DESIGN 360 Madison Avenue, New York, New York 10017 212.972.9800 Baltimore • Boston • Buffalo • Calgary • Chicago Houston • Los Angeles • Mumbai • New York • Phoenix St. Louis • San Francisco • Shanghai • Toronto Vancouver • Victoria • Washington DC		ENLARGED PLAN 9TH FLOOR - WEST		VA NY HARBOR HEALTHCARE SYSTEM MANHATTAN VAMC - BUILDING 1 9TH FLOOR RENOVATIONS		630PR2600				
ADDENDUM #1  08/28/2013 Revisions: <table><tr><td>ISSUED FOR CONSTRUCTION</td><td>08/15/2013</td></tr></table>		ISSUED FOR CONSTRUCTION	08/15/2013			Approved Project Director		Location 423 EAST 23RD STREET NEW YORK, NY 10010		Building Number 1				
ISSUED FOR CONSTRUCTION	08/15/2013													
						Date AUGUST 15, 2013		Checked AH/DT		Drawn CO		Drawing Number 1-AE109-W		

VA FORM 08-6231