

Solid Front Super Inch

1-1/2" Solid Front Task Light

T8 Fluorescent

SFI00/200/300 Series

Project

Type

Project Location

Catalog #



Thin 1 1/2" Profile.

Available with economy pre-heat T8 or energy saving rapid start T8 lamps in 3000K, 3500K or 4100K.

Optional electronic ballast for maximum energy savings.

Diffuser securely held into place with retention clip.

Choose standard prismatic diffuser for general lighting needs or an optional 45 degree lateral prism lens for reduction of veiling reflections.

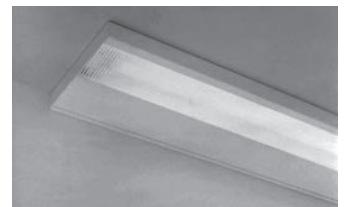
Flush ends for continuous row-mounted illumination.

Hinged wireway facilitates hands-free wiring.

Super Inch's solid metal front minimizes perceived fixture brightness, visually integrates into cabinetry without a concealing front fascia and allows mounting tight up to the lip of a cabinet while permitting easy lens removal.



Lay-in prismatic lens



Lay-in 45 degree lateral prism lens

Solid Front Super Inch

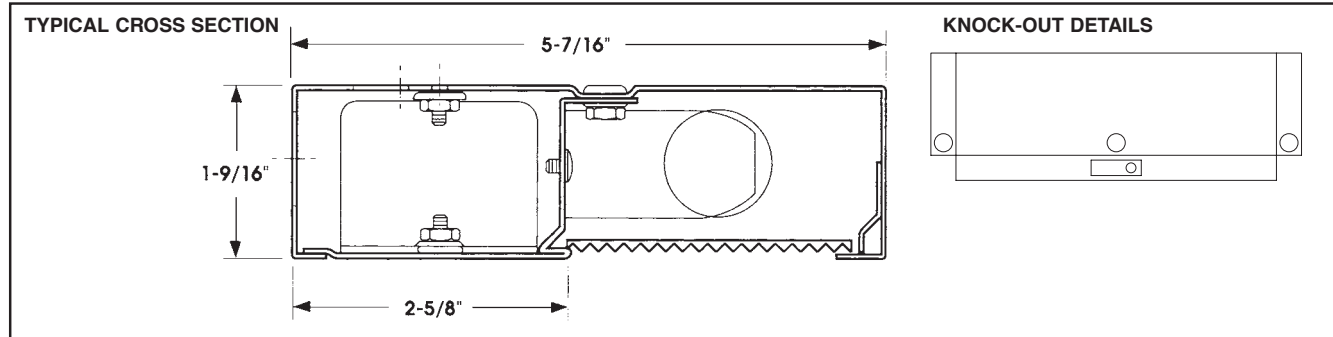
I-1/2" Solid Front Task Light

T8 Fluorescent

SFI00/200/300 Series

Project

Type



PHOTOMETRIC DATA		Footcandles on Worksurface									
		A	B	C	D	E	F	G	H	I	
	A	8	29	69	4	9	17	2	3	4	
	B	36	94	131	13	26	34	5	7	9	
	C	14	50	97	6	16	27	3	5	6	
	D	35	91	127	13	27	36	5	8	9	
	E	69	122	140	22	36	41	7	10	11	

Data from ITL test report numbers: 34881A15-34883A15

SPECIFICATIONS

CONSTRUCTION

20 gauge cold rolled steel (or optional stainless steel) construction. All corners are neatly formed and knockouts flattened. All exposed edges are free of burrs. No visible fasteners.

DIFFUSER

Standard clear prismatic acrylic diffuser. Optional 45 degree lateral prism acrylic lens blocks direct lamp output and distributes light laterally to reduce veiling reflections and glare.

FINISH

White polyester resin powder coat is applied after fabrication over a bonderizing iron phosphate coating. Minimum 87% reflectivity.

LABELS

UL, CUL & IBEW.

LIFETIME WARRANTY

All components, except lamps and ballasts, are warranted to perform for the life of the original installation. Ballasts covered per ballast manufacturer's warranty.

ELECTRICAL

For Pre-heat T8 lamps

Normal power factor, pre-heat ballast. 120 volts only.

For Rapid Start T8 lamps

High power factor rapid start class "P" high frequency electronic ballast standard.

LAMPS

For Pre-heat T8 lamps

One 15 or 30 watt cool white T8 fluorescent lamp included.

For Rapid Start T8 lamps

One 17, 25 or 32 watt T8 3500K fluorescent lamp included. 3000K or 4100K lamps may be specified.

INSTALLATION FEATURES

Direct-wiring can be done with standard electrical fittings into KO in back, ends or top.

(2) Keyhole mounting slots.

Wireway containing all electrical components hinges down for hands-free wiring and easy maintenance.

ORDERING INFORMATION

Catalog #	Lamps	Length	Width	Depth
For pre-heat T8 lamps				
SF115-S	1/F15T8	18 3/8"	5 7/16"	1 9/16"
SF215-S	1/F30T8	36 1/8"	5 7/16"	1 9/16"
For rapid start T8 lamps				
SF317	1/F17T8	24 1/16"	5 7/16"	1 9/16"
SF325	1/F25T8	36 1/16"	5 7/16"	1 9/16"
SF332	1/F32T8	48 1/8"	5 7/16"	1 9/16"

Note: Specify T8 lamp if other than standard 3500K supplied with SF317, SF325 or SF332.

OPTIONS

/277ECB	277 Volt Electronic Ballast (Rapid Start T8 models only)
/BW	45 Degree Lateral Prism Lens
/CO-W	White Grounded Convenience Outlet (for 120V only)
/CSJT-3	SJT cordset hard-wired into back of fixture, UL listed as a portable fixture for use in office workstations.
/DIM	Dimming Ballast for Rapid Start T8 lamped fixtures
/RSP	Radio Suppressor
/RSW	5 amp Rocker Switch (for 120 volt only)
/SLO-BLO	GMF Slow-Blow Fuse and Fuseholder
/WLAMP	Lamp installed in fixture (specify type & color)

For stainless steel housing construction:

add "SS" as prefix to catalog number: Example: SS-SF317

ELECTRICAL DATA	T8 Magnetic Ballast					T8 Electronic Ballast		
	15W	17W	25W	30W	32W	17W	25W	32W
Input Watts	17	24	31	35	35	20	27	29
Max. Amps	.35	.21	.28	.64	.32	.19	.23	.25
Power Factor	.50	.95	.92	.50	.91	.95	.95	.95
THD	14%	20%	25%	8.5%	15%	30%	25%	20%