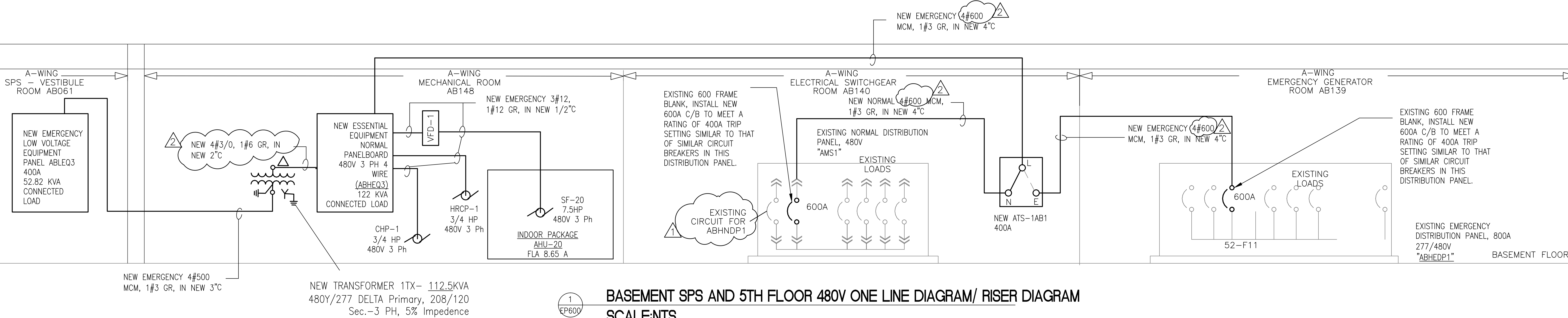
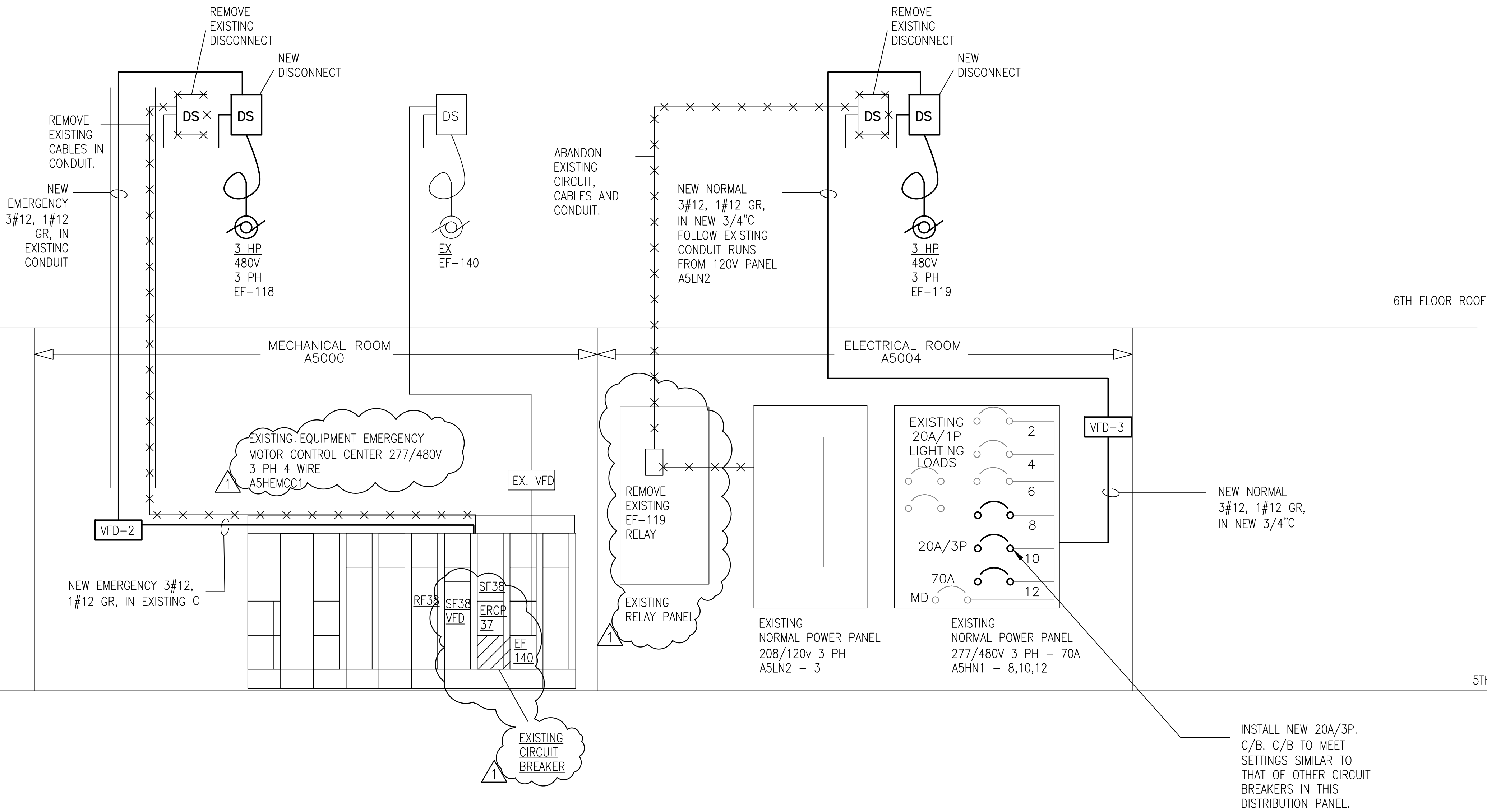


three inches = one foot
one and one half inches = one foot
one inch = one foot
three quarters inch = one foot
one half inch = one foot
three eighths inch = one foot
one quarter inch = one foot
one eighth inch = one foot

GENERAL NOTES

1. VERIFY EXISTING CONDITIONS AND EXACT REQUIREMENTS IN FIELD. PROVIDE ALL LABOR AND MATERIAL AS REQUIRED TO ACCOMPLISH THE INTENT AS DEPICTED AND NOTED.
2. FOR 480V AND 120V FEED FROM PANELS REFER TO THIS DRAWING AND EP-401

TEXT	LINE TYPE	LEGEND
EX	—	EXISTING ELECTRICAL INSTALLATION TO REMAIN
ER	- - - - -	EXISTING ELECTRICAL INSTALLATION TO BE REMOVED AND REPLACED
	—	NEW ELECTRICAL 480V CONDUIT AND CABLE
MD		MAIN DISCONNECT
DS		FUSED DISCONNECT SWITCH
JB		JUNCTION BOX
HOA		MANUAL-ON/OFF-AUTOMATIC
VFD		VARIABLE FREQUENCY DRIVE



BASEMENT SPS AND 5TH FLOOR 480V ONE LINE DIAGRAM/ RISER DIAGRAM
SCALE: NTS

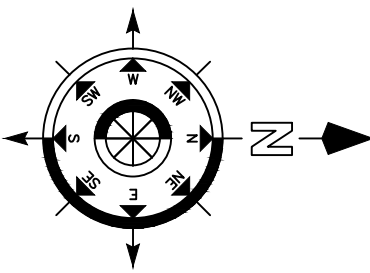
35% SD SUBMITTAL	1/11/4/2012
35% SD REVISION 1	1/12/2012
65% DD SUBMITTAL	12/20/2012
95% CD SUBMITTAL	01/30/2013
100% CD SUBMITTAL	02/27/2013
BIDDING DOCUMENTS	06/10/2013
AMENDMENT 2	8-2-2013
AMENDMENT 3	9-3-2013
Revisions:	Date



Dept. of Veterans Affairs
Richard L. Roudebush
VA Medical Center
1481 W. 10th Street
Indianapolis, IN 46202

CERTIFIED BY:

NORTH REFERENCE



ARCHITECT/ENGINEERS:

9245 Calumet Ave, Suite 205,
Munster, IN 46321
(219) 836-2120 Fax (219) 836-1129



Drawing Title
ELECTRICAL SPS AND 5TH FLOOR 480V
POWER ONE LINE SCHEMATIC AND RISER DIAGRAM

PROJECT ENGINEER
John Fiwowski

SCALE

Approved Engineering Chief

Approved Service Chief

Project Title
RENOVATE SPS

Location
BASEMENT A-WING

Date
6/10/2013

Checked
JS

Drawn
DS

Project Number
583-12-107

Building Number
1

Drawing Number
EP-600

3FY12

52 of 55

BIDDING DOCUMENTS
FULLY SPRINKLERED

Engineering
and Facilities
Management
Services

