

ACCESSORY NOTES

1. ACCESSIBLE LAVATORY FAUCET CONTROLS SHALL BE LEVER OPERATED, PUSH-TYPE OR ELECTRONICALLY ACTIVATED MUST NOT REQUIRE MORE THAN 5 LB OF FORCE TO OPERATE. ANY SELF-CLOSING VALVES MUST REMAIN IN OPERATION AT LEAST 15 SECONDS.
2. GRAB BARS IN RESTROOMS MUST BE 1-1/4" TO 1-1/2" O.D. AND MUST BE INSTALLED TO WITHSTAND A LOAD OF 300 LBS.
3. ALL EXPOSED DRAIN PIPES AND HOT WATER SUPPLY LINES UNDER ACCESSIBLE LAVS/SINKS SHALL BE INSULATED TO PROTECT AGAINST CONTACT. THERE SHALL BE NO SHARP OR ABRASIVE SURFACES UNDER SINKS.
4. SIGNAGE AT DOORS AND OTHER AREAS REQUIRED TO BE ACCESSIBLE SHALL MEET THE FOLLOWING CRITERIA:
 - A. COLOR & CONTRAST- CHARACTERS AND BACKGROUND SHALL HAVE A NON-GLARE FINISH. CHARACTERS AND THEIR BACKGROUNDS SHALL HAVE COLORS CONTRASTING TO EACH OTHER. EITHER A DARK CHARACTER ON A LIGHT BACKGROUND OR VICE VERSA.
 - B. CHARACTER PROPORTION /HEIGHT-LETTERS & NUMBERS ON SIGNS SHALL HAVE A WIDTH TO HEIGHT RATIO BETWEEN 3:5 & 1:1 AND A STROKE-WIDTH-TO-HEIGHT RATIO BETWEEN 1:5 & 1:10.
 - C. RAISED/BRAILLED CHARACTERS & PICTOGRAMS-LETTERS AND NUMERALS SHALL BE RAISED 1/32" MIN. UPPERCASE, SIMPLE TYPEFACE ACCOMPANIED WITH GRADE 2 BRAILLE RAISED CHARACTERS SHALL BE BETWEEN 5/8" & 2" IN HEIGHT. PICTOGRAM, WHEN USED, SHALL HAVE VERBAL DESCRIPTION DIRECTLY BELOW PICTOGRAM. PICTOGRAM BORDER SHALL BE 6" HIGH MINIMUM.
5. REQUIRED ACCESSIBLE ELEMENTS SHALL BE IDENTIFIED BY THE INTERNATIONAL SYMBOL OF ACCESSIBILITY AT THE FOLLOWING LOCATIONS: ACCESSIBLE DRESSING, FITTING AND LOCKER ROOMS.

NOTES:

FOR GENERAL PLUMBING NOTES SEE DRAWING PL-201
ALL TOILET ROOM EQUIPMENT TO BE INSTALLED IN ACCORDANCE WITH VA STANDARD ACCESSIBILITY CODE, ANSI, AND FEDERAL A.D.A. REQUIREMENTS.

PLUMBING CONTRACTOR TO PROVIDE FIXTURE CUTS TO VA RESIDENT ENGINEER FOR REVIEW & APPROVAL PRIOR TO PURCHASE AND INSTALLATION. ALL FIXTURES TO BE "TOTO" BRAND OR EQUAL.

PROVIDE SIGNAGE INDICATING ACCESSIBILITY IN ACCORDANCE WITH VA ADM-2011.

COORDINATE PLUMBING FIXTURES W/ CONTRACTOR.

ALL FAUCETS TO BE IN COMPLIANCE W/ANSI 4.19.5 (LEVER, PUSH BUTTON, OR EQUAL OPERATION) AND W/ ILLINOIS PLUMBING CODE BEING SELF CLOSING FAUCETS THAT DO NOT STAY OPEN MORE THAN 15 SECONDS.

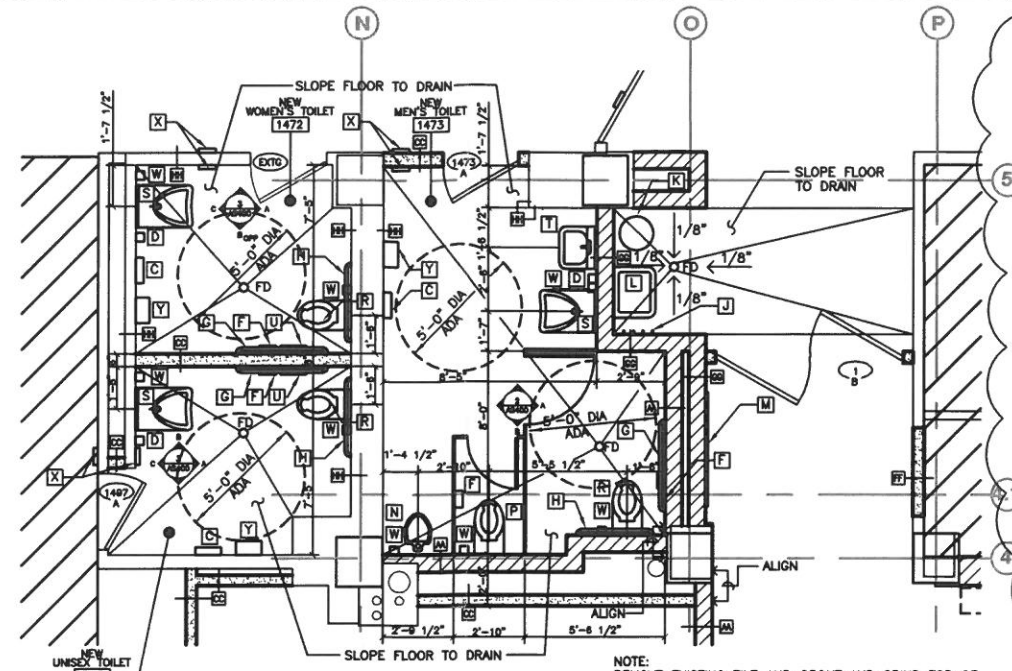
PROVIDE SOLID BLOCKING IN WALL FOR SUPPORT OF FIXTURES, COUNTERTOPS, PARTITIONS AND ACCESSORIES.

INSULATE ALL WATER PLUMBING (TYPICAL)

PROVIDE ACCESS PANELS & CLEAN OUTS AS REQUIRED BY MEP SYSTEMS.

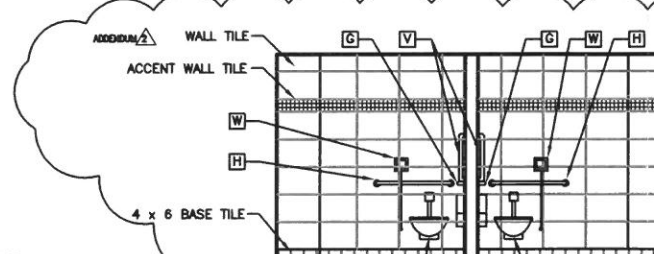
ACCESSORIES SCHEDULE

PROVIDED BY CONTRACTOR	INSTALLED BY CONTRACTOR	12" W x 12" D x 36" H DOUBLE TIER LOCKER
PROVIDED BY CONTRACTOR	INSTALLED BY CONTRACTOR	12" W x 12" D x 36" H HANDICAP ACCESSIBLE LOCKER
PROVIDED BY CONTRACTOR	INSTALLED BY CONTRACTOR	COMBINATION PAPER TOWEL DISPENSER & DISPOSAL UNIT.
PROVIDED BY CONTRACTOR	INSTALLED BY CONTRACTOR	SOAP DISPENSER - SURFACE MOUNTED
PROVIDED BY CONTRACTOR	INSTALLED BY CONTRACTOR	18" W x 30" H MIRROR W/ STAINLESS STEEL FRAME W/ SHELF
PROVIDED BY CONTRACTOR	INSTALLED BY CONTRACTOR	TOILET TISSUE DISPENSER - DOUBLE ROLL SURFACE MOUNTED
PROVIDED BY CONTRACTOR	INSTALLED BY CONTRACTOR	42" GRAB BAR, 1 1/4" DIA
PROVIDED BY CONTRACTOR	INSTALLED BY CONTRACTOR	36" GRAB BAR, 1 1/4" DIA
PROVIDED BY CONTRACTOR	INSTALLED BY CONTRACTOR	MOP HOOKS
PROVIDED BY CONTRACTOR	INSTALLED BY CONTRACTOR	EYE WASH / SHOWER UNIT
PROVIDED BY CONTRACTOR	INSTALLED BY CONTRACTOR	FLOOR SINK
PROVIDED BY CONTRACTOR	INSTALLED BY CONTRACTOR	WHITE BOARD
PROVIDED BY CONTRACTOR	INSTALLED BY CONTRACTOR	URINAL
PROVIDED BY CONTRACTOR	INSTALLED BY CONTRACTOR	WATER CLOSET 1
PROVIDED BY CONTRACTOR	INSTALLED BY CONTRACTOR	WATER CLOSET 2 - ADA
PROVIDED BY CONTRACTOR	INSTALLED BY CONTRACTOR	LAVATORY 1 - ADA
PROVIDED BY CONTRACTOR	INSTALLED BY CONTRACTOR	LAVATORY 2
PROVIDED BY CONTRACTOR	INSTALLED BY CONTRACTOR	NURSE CALL - SEE ELEC. DRAWINGS
PROVIDED BY CONTRACTOR	INSTALLED BY CONTRACTOR	H.C. PUSH BUTTON DOOR OPERATOR - SEE ELEC. DRAWINGS
PROVIDED BY CONTRACTOR	INSTALLED BY CONTRACTOR	SANITARY NAPKIN DISPOSAL
PROVIDED BY CONTRACTOR	INSTALLED BY CONTRACTOR	18" GRAB BAR, 1 1/4" DIA.
PROVIDED BY CONTRACTOR	INSTALLED BY CONTRACTOR	ELECTRIC HAND DRYER - EXCELCORATOR OR EQUAL



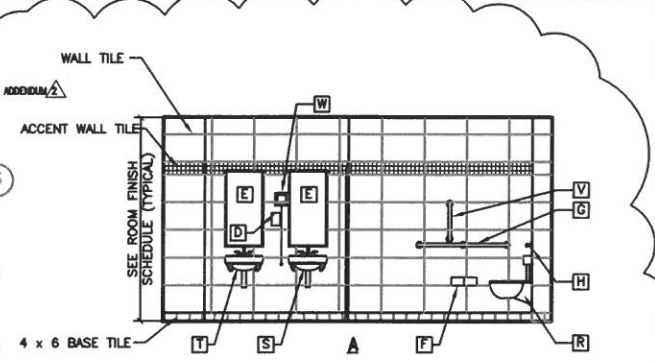
1 TOILET ROOMS

3/8" = 1'-0"



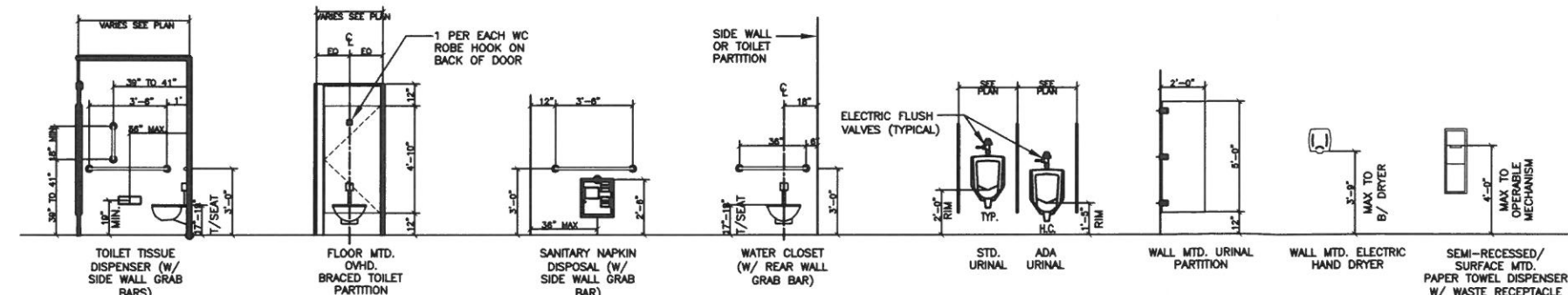
3 TOILET ROOMS ELEVATIONS

3/8" = 1'-0"



2 NEW MEN'S TOILET ELEVATIONS

3/8" = 1'-0"

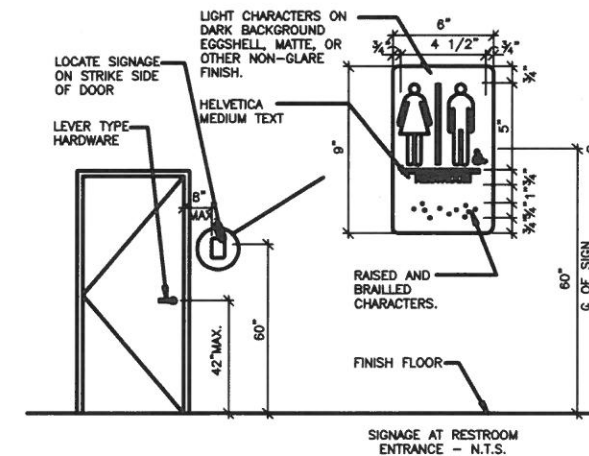


4 TYPICAL MOUNTING HEIGHTS AND ACCESSIBLE MOUNTING HEIGHTS

3/8" = 1'-0"

NOTE:

ANY CONTROL MECHANISM REQUIRING USE BY BUILDING OCCUPANTS SHALL BE MOUNTED AT 48" A.F.F. MAXIMUM TO THE HIGHEST OPERABLE PART OF OBJECT. THE MINIMUM MOUNTING HEIGHT OF ANY CONTROL MECHANISM SHALL BE 15" A.F.F. TO THE LOWEST OPERABLE PART OF OBJECT, UNLESS NOTED OTHERWISE. TYPICAL ITEMS INCLUDE: BUT NOT LIMITED TO ARE: ELECT. SWITCHES, TELEPHONES/TDD'S, THERMOSTATS, ELECT. OUTLETS, DATA TERMINALS, ALARM PULL-STATIONS & DOOR BUZZERS.



5 TYPICAL SIGN MOUNTING HEIGHT

1/2" = 1'-0"

FULLY SPRINKLERED

ARCHITECTURE /ELECTRICAL KNIGHT 221 North LaSalle Street Suite 300 Chicago, IL 60601-1211 Phone: (312) 577-3300		M-P-PP CONSULTANT: Bancroft BANCROFT ARCHITECTS + ENGINEERS 700 North Dearborn Street, Suite 403 1800 North Dearborn Street, Suite 403 60610-1211 60610-1211		Drawing Title ENLARGED TOILET PLANS AND ELEVATIONS Approved Project Director	Project Title Remodel + Expand Space for Material Management Service Location 820 S. DAMEN AVE, CHICAGO, IL Date 09/15/2008	Project Number 537-321 Building Number BLDG 1 - 1ST FLR Drawing Number AS400 Day 30 of 65	Office of Construction and Facilities Management
--	--	--	--	---	--	--	--

