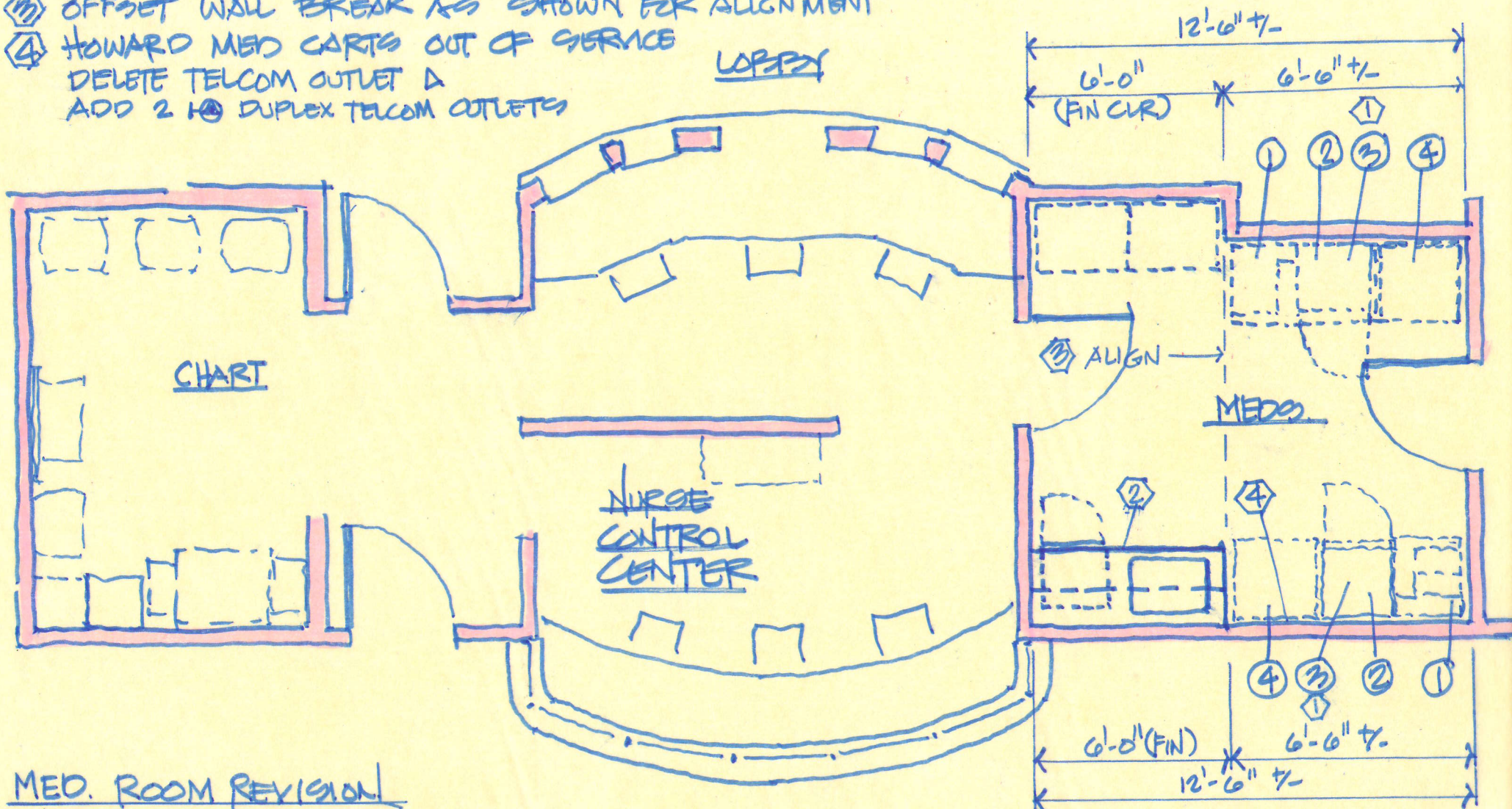


NOTES

- ① FOLLETT REFRIG. ON WALL-MNT SHELF OVER PIXIS UNIT
- ② BASE AND WALL CABINET LENGTH TO BE 6'-0":
SINK BASE 36" WIDE MIN; WALL CABINET WIDTH TO MATCH BASE
- ③ OFFSET WALL BREAK AS SHOWN FOR ALIGNMENT
- ④ HOWARD MED CARTS OUT OF SERVICE
DELETE TELCOM OUTLET A
ADD 2 10 DUPLEX TELCOM OUTLETS

LOBBY



MED. ROOM REVISION

2ND FLR BUILDOUT M.H. BEDS

CAVHCS - TUSKEGEE

8-21-13

SK-01

- ① PIXIS 3500 6 DRAWER MAIN
- ② PIXIS 15500 6 DRAWER AUX.
- ③ FOLLETT REF 4 ADA OR REF F
- ④ PIXIS 15500 SINGLE COL. AUX.